

SECTION CORNER RECORD

NW 300-950

BOONE COUNTY SURVEYOR'S OFFICE

State Plane grid coordinates NAD83 (2011):
North: 1761397.99 East: 3074566.54 (U.S. survey feet)

Type of monument: Harrison, 4" disk 'Section Corner'
Depth: Two inches above surrounding ground

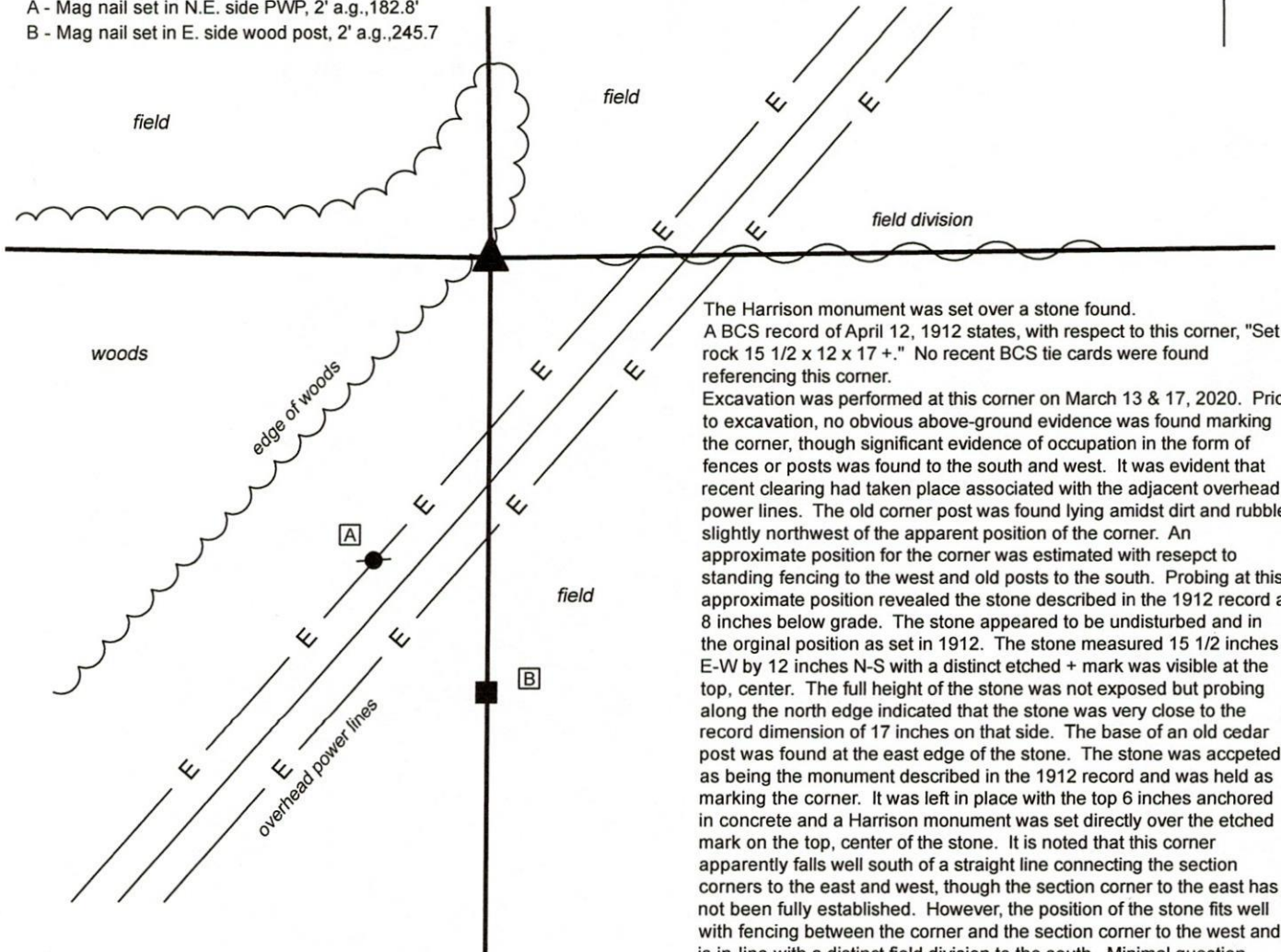
Indiana tie card references:
IN02_T19NR2W16_76 IN02_T19NR2W21_04

CORNER WITNESS DETAIL

SCALE 1" = 100'
0' 50' 100'

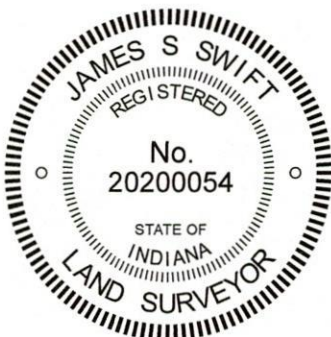


- A - Mag nail set in N.E. side PWP, 2' a.g., 182.8'
- B - Mag nail set in E. side wood post, 2' a.g., 245.7



The Harrison monument was set over a stone found. A BCS record of April 12, 1912 states, with respect to this corner, "Set rock 15 1/2 x 12 x 17 +." No recent BCS tie cards were found referencing this corner.

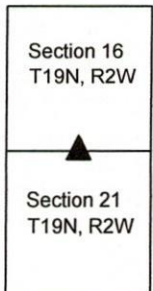
Excavation was performed at this corner on March 13 & 17, 2020. Prior to excavation, no obvious above-ground evidence was found marking the corner, though significant evidence of occupation in the form of fences or posts was found to the south and west. It was evident that recent clearing had taken place associated with the adjacent overhead power lines. The old corner post was found lying amidst dirt and rubble slightly northwest of the apparent position of the corner. An approximate position for the corner was estimated with respect to standing fencing to the west and old posts to the south. Probing at this approximate position revealed the stone described in the 1912 record at 8 inches below grade. The stone appeared to be undisturbed and in the original position as set in 1912. The stone measured 15 1/2 inches E-W by 12 inches N-S with a distinct etched + mark was visible at the top, center. The full height of the stone was not exposed but probing along the north edge indicated that the stone was very close to the record dimension of 17 inches on that side. The base of an old cedar post was found at the east edge of the stone. The stone was accepted as being the monument described in the 1912 record and was held as marking the corner. It was left in place with the top 6 inches anchored in concrete and a Harrison monument was set directly over the etched mark on the top, center of the stone. It is noted that this corner apparently falls well south of a straight line connecting the section corners to the east and west, though the section corner to the east has not been fully established. However, the position of the stone fits well with fencing between the corner and the section corner to the west and is in-line with a distinct field division to the south. Minimal question exists as to whether this is the position established in 1912. This corner was originally established as a wood post in 1829.



Kenneth E. Hedge
Kenneth E. Hedge, County Surveyor

James S. Swift
James S. Swift, IN LS 20200054
March 23, 2020

Jefferson Township



SECTION CORNER RECORD

NW 400-950

BOONE COUNTY SURVEYOR'S OFFICE

State Plane grid coordinates NAD83 (2011):

North: 1766701.75 East: 3074536.61 (U.S. survey feet)

Type of monument: 5/8 inch rebar with metal cap stamped with 'Boone County Surveyor'

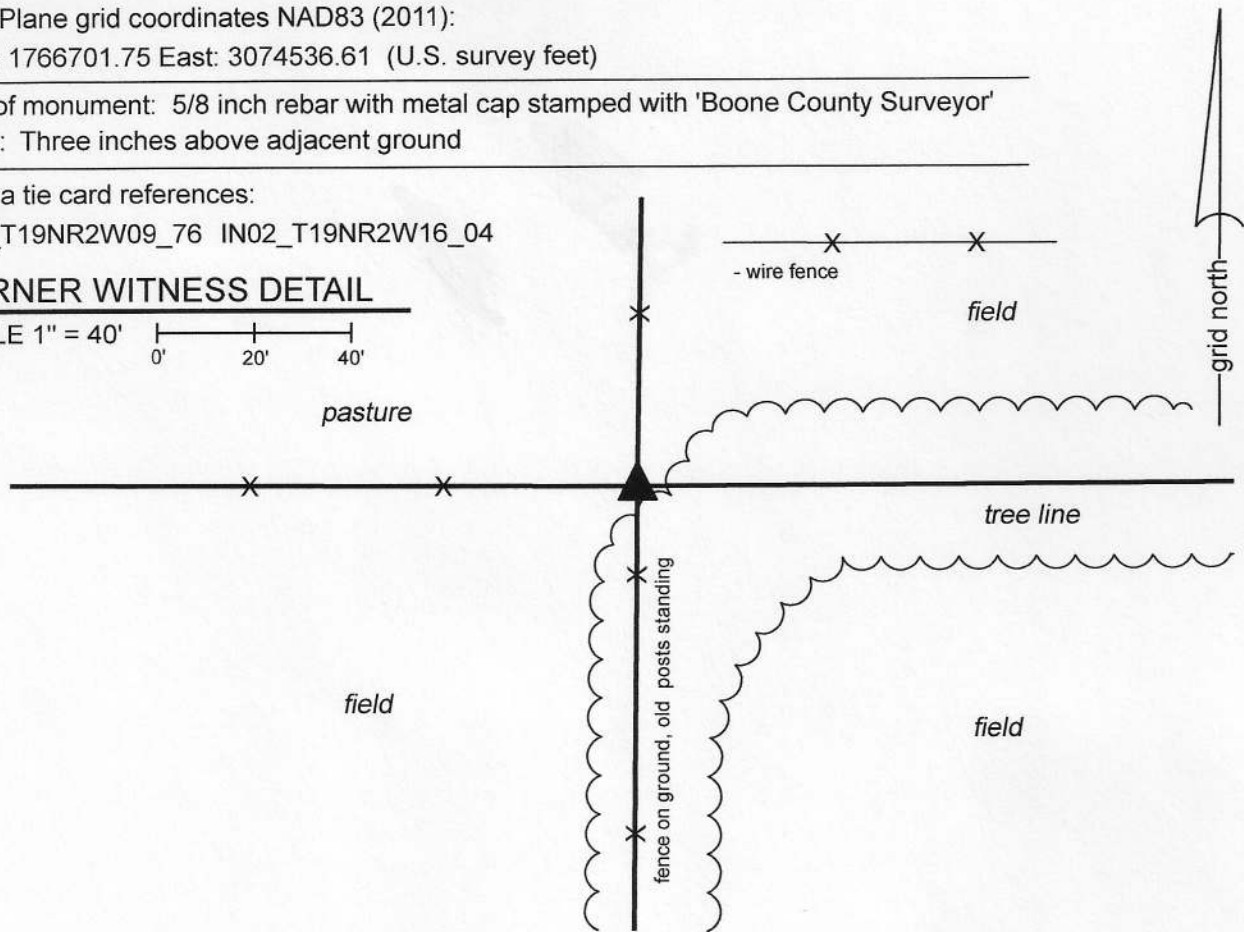
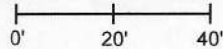
Depth: Three inches above adjacent ground

Indiana tie card references:

IN02_T19NR2W09_76 IN02_T19NR2W16_04

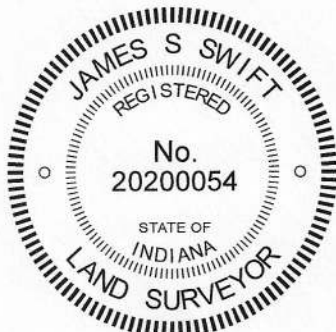
CORNER WITNESS DETAIL

SCALE 1" = 40'



The corner is marked by a 30 inch length of 5/8 inch rebar set in concrete and capped with a metal cap stamped 'Boone County Surveyor.' The rebar is adjacent to the east edge of a 7 inch round wood corner post. The rebar is intended to mark the corner and is not a witness monument. A BCS record of unknown date (between 1863 and 1912) states, with respect to this corner and other corners in section 16, "Run line from A east to a. Thence to B. Located, set rock + 11 1/2-8-5 bottom. set rock 8x9x5 +." It is noted that the corner 'B' refers to the subject corner. No recent BCS tie cards were found referencing the corner, nor were surveys found recorded in the Boone County Recorder's Office which reference the corner. This corner was excavated on April 1 and April 7, 2020. Prior to excavation, a wood corner post was observed at the intersection of standing, relatively new fence to the north and west and ancient fencing to the south. The fence to the south is mostly on the ground but numerous ancient wood posts are still standing, marking the specific location of the old fence. Manual excavation and extensive probing in the vicinity of the post revealed no rocks found. It was observed that an old square cedar post is lying on the ground approximately 4 feet east of the standing corner post, evidently having been removed from the ground and perhaps replaced with the newer post. The fate of the stones referenced in the undated record is not known. It is considered most likely that they were removed at the time the ancient corner post was replaced with the newer post. Although the fence to the west is relatively new, old corner posts were observed to remain standing, providing evidence of the aliquot corners approximately 1/8, 1/4 and 3/8 of a mile, respectively, to the west. Analysis of the relative positions of the old posts to the west and the line of old posts to the south yielded the conclusion that the most probable position of the corner is slightly east of the standing corner post. This position, being in-line with the posts to the south, was held as the specific position of the corner. Due to the proximity of the standing corner post, a Harrison monument could not be set at this position. The corner was marked by a 30 inch length of 5/8 inch rebar set in concrete and capped with a metal cap stamped 'Boone County Surveyor.' The center of the rebar is 0.16 foot east of the east edge of the standing post.

This corner was originally established as a wood post in 1829.



Kenneth E. Hedge
Kenneth E. Hedge, County Surveyor

James S. Swift
James S. Swift, IN LS 20200054

April 29, 2020

Sugar Creek
Township

Section 9
T19N, R2W

Jefferson
Township

Section 16
T19N, R2W

SECTION CORNER RECORD

NW 400-1000

BOONE COUNTY SURVEYOR'S OFFICE

State Plane grid coordinates NAD83 (2011):

North: 1766705.79 East: 3071885.80 (U.S. survey feet)

Type of monument: Harrison, 4" disk 'Section Corner'

Depth: Six inches below adjacent road surface

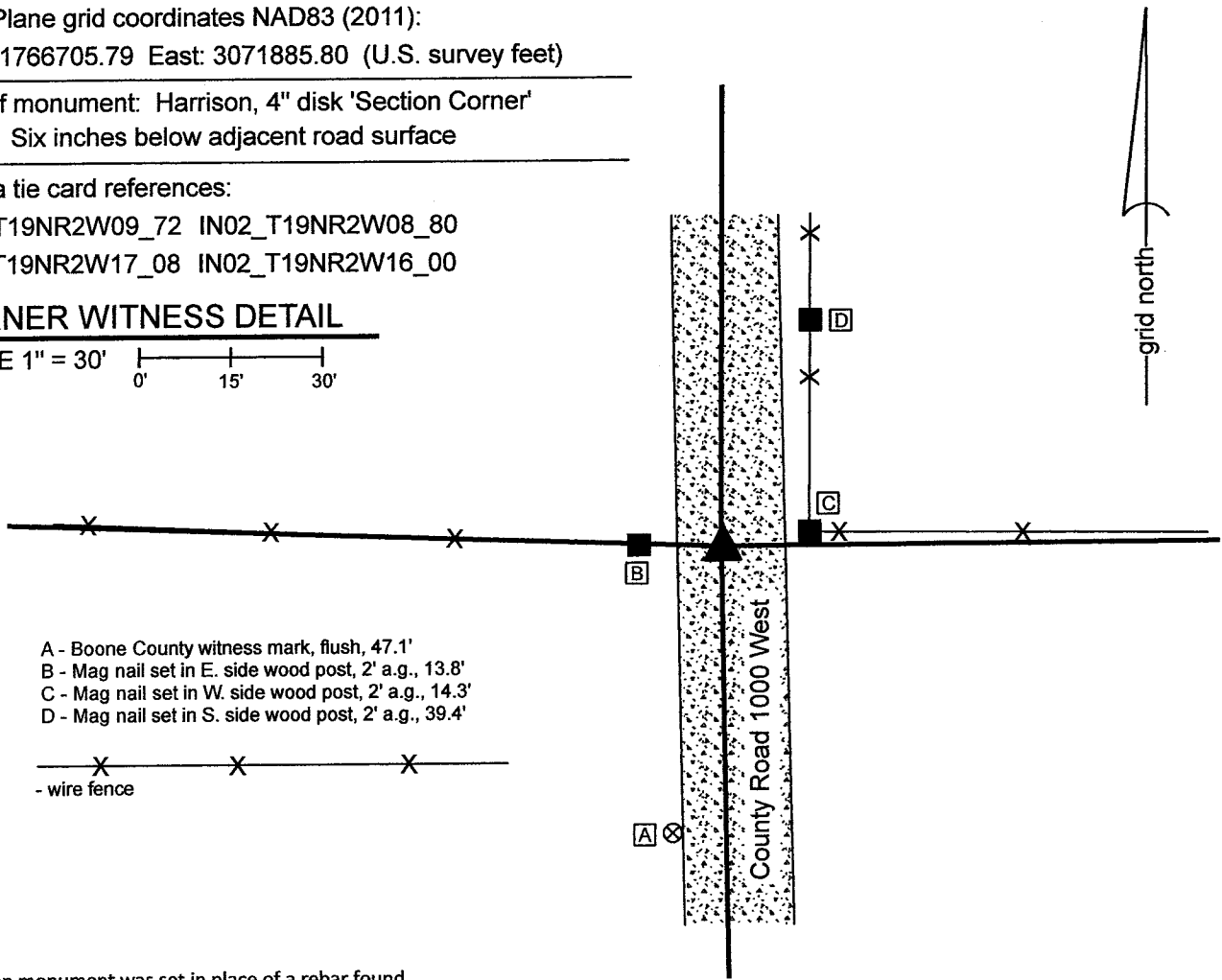
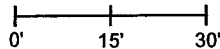
Indiana tie card references:

IN02_T19NR2W09_72 IN02_T19NR2W08_80

IN02_T19NR2W17_08 IN02_T19NR2W16_00

CORNER WITNESS DETAIL

SCALE 1" = 30'



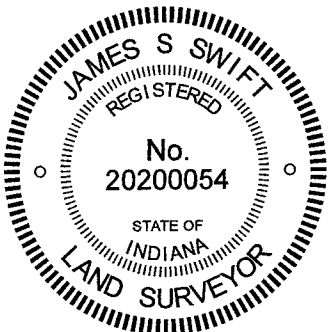
- A - Boone County witness mark, flush, 47.1'
- B - Mag nail set in E. side wood post, 2' a.g., 13.8'
- C - Mag nail set in W. side wood post, 2' a.g., 14.3'
- D - Mag nail set in S. side wood post, 2' a.g., 39.4'

- wire fence

The Harrison monument was set in place of a rebar found.

A BCS record of December 27, 1862 to January 3, 1863 states, with respect to this corner, "Reestablished from one tree. Set a Rock 23,17,12 marked +." A BCS tie card dated September 2, 1969 states "Stone Located. R/R Rail Set."

This corner was excavated on December 15, 2021. Prior to excavation, a rebar with orange plastic cap (markings illegible) was found at 2 inches deep in the center of the gravel roadway, opposite posts on both sides of the road and in-line with a fence to the east. Excavation did not reveal additional evidence of the corner. Per the 1969 tie card, it was expected that a section of railroad rail would be found, but no such monument was found. It was observed that the road bed in this immediate vicinity is only about 4 inches thick. The position of the found rebar fit with the local evidence of the corner and fit with the graphic representation of the corner on the 1969 tie card, being in the center of the road and in-line with the fences. The position of the rebar also fit with the distance ties to the posts on the east and west sides of the road, though it is noted that these posts appear that they may be newer than what was present in 1969. It is considered most likely that the stone called for in the 1863 record was removed in 1969 when the railroad rail was installed and that subsequently the rail was removed by road grading equipment. Surveys by Jerry L. Carter, LS S0350, recorded as Instrument 2003005080 and 2003005081 in the Office of the Boone County Recorder show the corner as a railroad rail. The position of the found rebar fits with the position of the rail shown on that survey, relative to other survey monuments shown thereon. The origin of the rebar is not known but it fits with the local evidence of the corner the 1969 tie card, and the 2003 surveys. The rebar was held as marking the corner and replaced with a Harrison monument. This corner was originally established as a wood post in 1829.



Kenneth E. Hedge
Kenneth E. Hedge, County Surveyor

James S. Swift
James S. Swift, IN LS 20200054
December 20, 2021

Sugar Creek Township

Jefferson Township

Section 8 T19N, R2W	Section 9 T19N, R2W
Section 17 T19N, R2W	Section 16 T19N, R2W