

SECTION CORNER RECORD

BOONE COUNTY SURVEYOR'S OFFICE

NW 300-800

State Plane grid coordinates NAD83 (2011):
 North: 1761457.81 East: 3082495.68 (U.S. survey feet)

Type of monument: Iron plug in concrete
 Depth: Flush with adjacent road surface

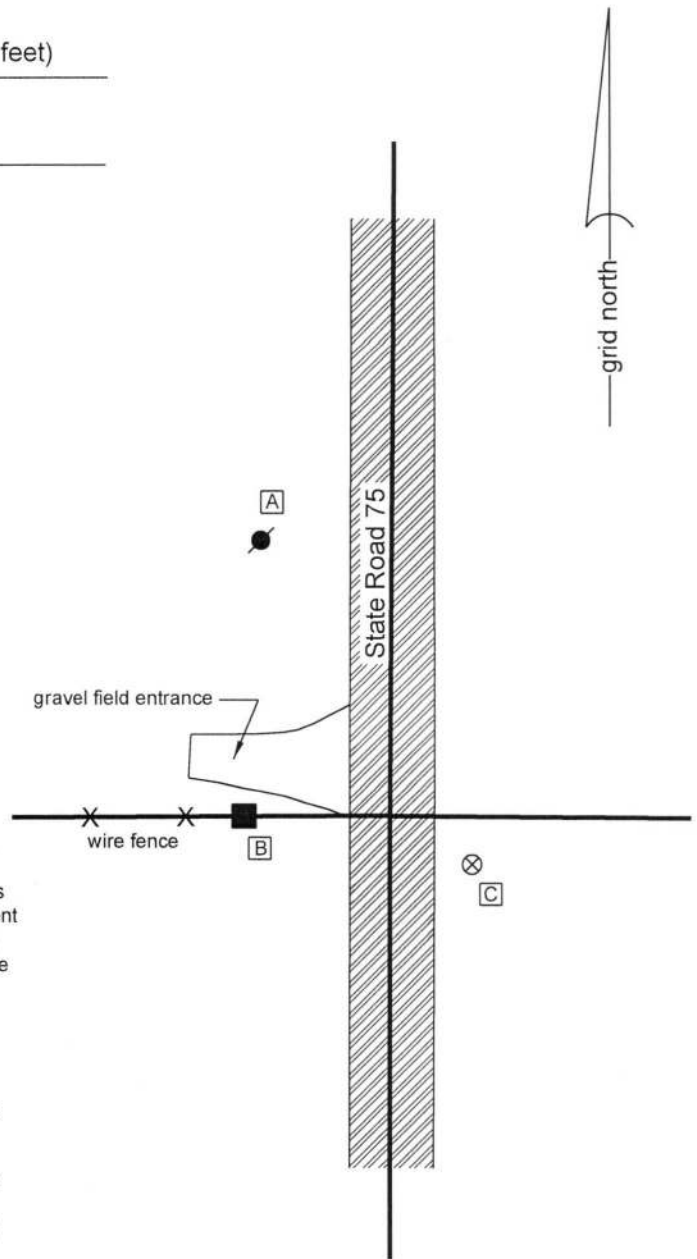
Indiana tie card references:
 IN02_T19NR2W15_80 IN02_T19NR2W14_72
 IN02_T19NR2W22_08 IN02_T19NR2W23_00

CORNER WITNESS DETAIL

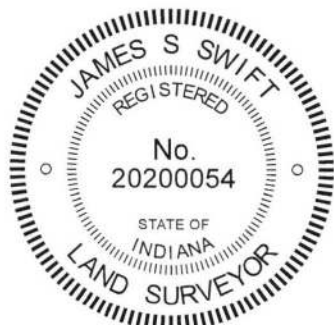
SCALE 1" = 60'

- A - Mag nail set in S.E. side power pole, 2' a.g., 92.7'
- B - Mag nail set in E. side wood post, 1.5' a.g., 41.9'
- C - Boone County witness mark, flush, 30.0'

Boone County witness mark is a 3/8" diameter x 2' long rebar bearing a metal cap stamped "Boone County Witness Point."



The iron monument in concrete was found in place and accepted as marking the corner. The original date of installation of this monument is not known and has not been confirmed by INDOT. A tie sheet in the Boone County Surveyor's Office with no date, but known to have been submitted to the office in 2001, shows the corner with no statement of the type of monument. The power poles which represent two of the reference objects for the distance ties on the undated tie card were removed in 2017 but the position of the monumented corner was confirmed with respect to those distance ties prior to removal of the references. The monument found in the field is believed to be at the same position as the corner shown on the tie card. The monument fits well with the local evidence of the corner in the form of the north-south roadway of State Road 75 and the fence to the west. The position of the corner fits well with the relative distances to proximate corners. The monument is believed to be widely accepted as marking the corner. No excavation was performed at this corner.



Kenneth E. Hedge
 Kenneth E. Hedge, County Surveyor

James S. Swift
 James S. Swift, IN LS 20200054
 July 3, 2018

Jefferson Township

Section 15 T19N, R2W	Section 14 T19N, R2W
Section 22 T19N, R2W	Section 23 T19N, R2W

SECTION CORNER RECORD

NW 300-850

BOONE COUNTY SURVEYOR'S OFFICE

State Plane grid coordinates NAD83 (2011):

North: 1761443.76 East: 3079815.81 (U.S. survey feet)

Type of monument: Harrison, 4" disk 'Section Corner'

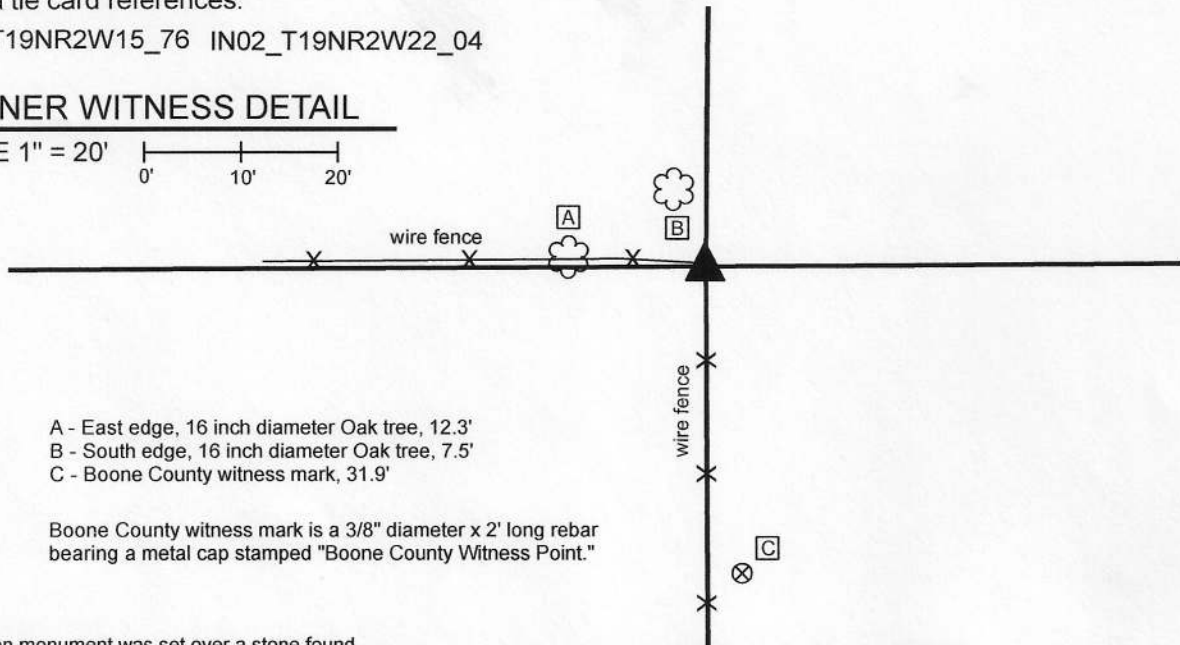
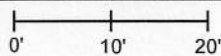
Depth: Seven inches above adjacent ground but slightly below the tops of adjacent rocks

Indiana tie card references:

IN02_T19NR2W15_76 IN02_T19NR2W22_04

CORNER WITNESS DETAIL

SCALE 1" = 20'



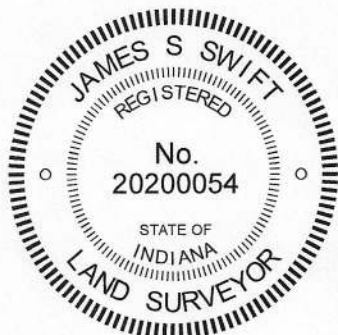
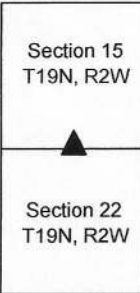
- A - East edge, 16 inch diameter Oak tree, 12.3'
- B - South edge, 16 inch diameter Oak tree, 7.5'
- C - Boone County witness mark, 31.9'

Boone County witness mark is a 3/8" diameter x 2' long rebar bearing a metal cap stamped "Boone County Witness Point."

The Harrison monument was set over a stone found.

No specific descriptions of this corner were found in the BCS Surveyor's Record beyond the original establishment of the corner as a wood post in 1829. The corner is shown as the terminal point for measurements in entries of 1833, 1857, 1895 and 1929, indicating that some monument was present from which to measure at those times. Neither recent BCS tie cards nor surveys recorded in the Boone County Recorder's Office were found referencing this corner. Excavation was performed at this corner on April 2 and 3, 2020. A wood corner post at the intersection of fence to the south and west was found providing evidence of the corner. The post did not appear to be ancient and was observed to be approximately 30 feet west of the midpoint of a line connecting substantial evidence of the section corners to the east and west. However, the position of the post was found to work well with the relative positions of evidence of the section corner to the west and an ancient wood corner post providing evidence of the quarter-quarter corner approximately one-quarter mile west of the corner. This set of evidence also fit reasonably well with the distances reported in the aforementioned BCS entries. It is clear from the combination of found physical evidence and the BCS distance entries that the existing fence intersection is much better evidence of the position of the corner held at various times previously than would be a computed midpoint of the line connecting the section corners to the east and west. It is noted that a large pile of small to medium sized granite rocks was found piled around the post prior to excavation. The rocks were displaced in the immediate vicinity of the post. Numerous rocks were found haphazardly embedded in the ground up to approximately 8 inches deep. During excavation, it was observed that the base of the post is not substantially embedded ground which may account for why the post was leaning toward the west. Excavation did reveal one notable stone which was clearly different in orientation and character from the other stones. This stone was found at 12 inches deep, slightly southeast of the base of the post. The stone did not appear to be bracing the post and was observed to be vertical and oriented in cardinal directions. The stone is 12 inches N-S by 12 inches E-W on the top and 14 inches tall, as measured on the north side. No specific marks were found on the stone but the character of the stone clearly appeared to represent a corner stone, not just a haphazardly placed rock. This stone was accepted as the best available evidence of the corner. The stone was left in place. The top several inches of the stone and the entire north side of the stone were anchored in concrete along with numerous small rocks and three 3/8 inch diameter rebars which were driven along the north and south sides of the primary stone. A Harrison monument, attached to the stone via said concrete, rocks and rebar, was set directly above the top, center of the stone. Numerous rocks from the aforementioned large rock pile were placed around the monument. The base of the corner post is approximately one foot northwest of the Harrison monument.

Jefferson Township



Kenneth E. Hedge
 Kenneth E. Hedge, County Surveyor

James S. Swift
 James S. Swift, IN LS 20200054

April 8, 2020

SECTION CORNER RECORD

NW 350-800

BOONE COUNTY SURVEYOR'S OFFICE

State Plane grid coordinates NAD83 (2011):

North: 1764123.10 East: 3082512.40 (U.S. survey feet)

Type of monument: Iron plug in concrete

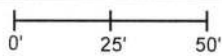
Depth: Flush with adjacent road surface

Indiana tie card references:

IN02_T19NR2W15_44 IN02_T19NR2W14_36

CORNER WITNESS DETAIL

SCALE 1" = 50'



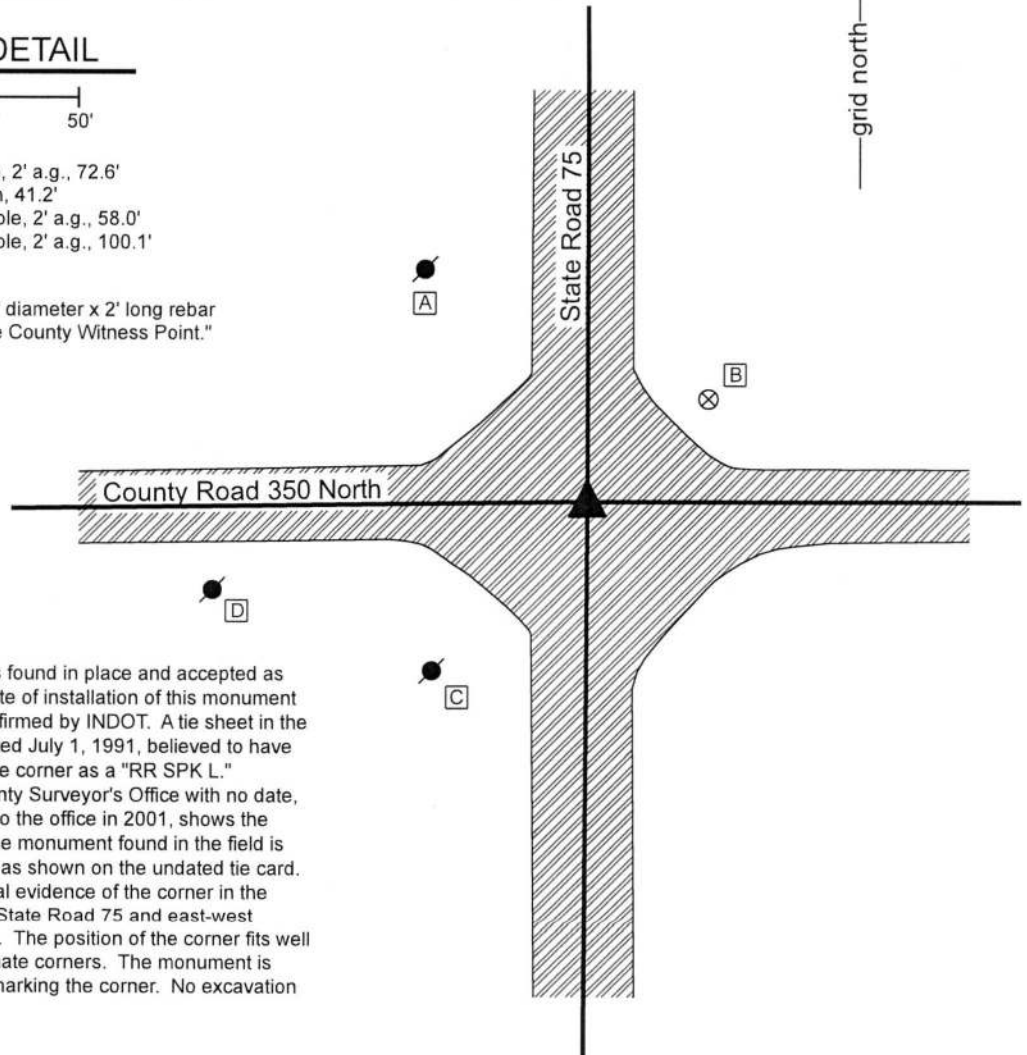
A - Mag nail set in E. side power pole, 2' a.g., 72.6'

B - Boone County witness mark, flush, 41.2'

C - Mag nail set in N.E. side power pole, 2' a.g., 58.0'

D - Mag nail set in N.E. side power pole, 2' a.g., 100.1'

Boone County witness mark is a 3/8" diameter x 2' long rebar bearing a metal cap stamped "Boone County Witness Point."



The iron monument in concrete was found in place and accepted as marking the corner. The original date of installation of this monument is not known and has not been confirmed by INDOT. A tie sheet in the Boone County Surveyor's Office dated July 1, 1991, believed to have been submitted by INDOT shows the corner as a "RR SPK L." Another tie sheet in the Boone County Surveyor's Office with no date, but known to have been submitted to the office in 2001, shows the corner as a "Rebar in concrete." The monument found in the field is believed to be the same monument as shown on the undated tie card. The monument fits well with the local evidence of the corner in the form of the north-south roadway of State Road 75 and east-west roadway of County Road 350 North. The position of the corner fits well with the relative distances to proximate corners. The monument is believed to be widely accepted as marking the corner. No excavation was performed at this corner.



Kenneth E. Hedge
Kenneth E. Hedge, County Surveyor

James S. Swift
James S. Swift, IN LS 20200054
July 3, 2018

Jefferson Township

Section 15 T19N, R2W	Section 14 T19N, R2W
-------------------------	-------------------------

SECTION CORNER RECORD

BOONE COUNTY SURVEYOR'S OFFICE

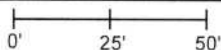
NW 400-800

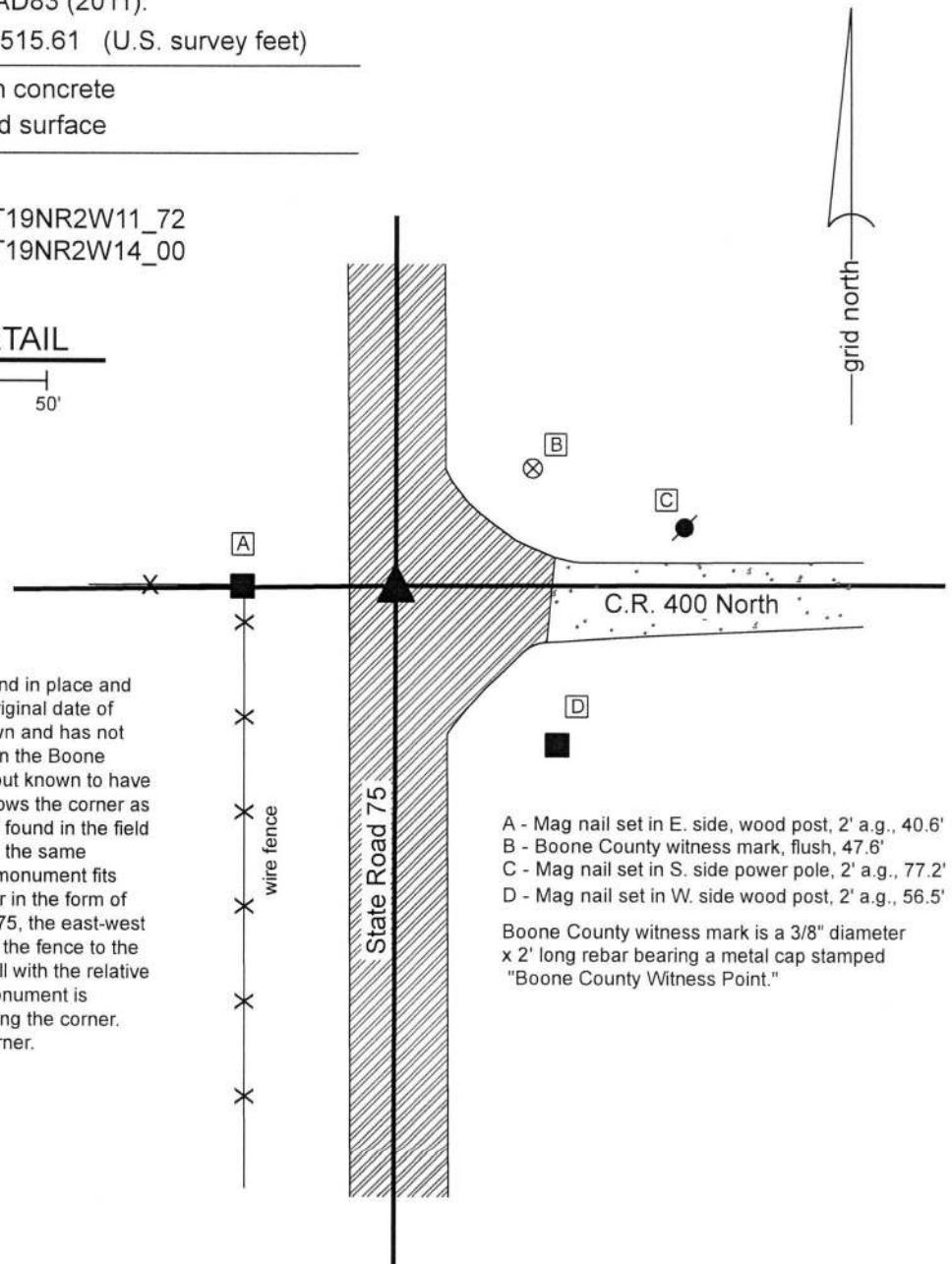
State Plane grid coordinates NAD83 (2011):
 North: 1766780.79 East: 3082515.61 (U.S. survey feet)

Type of monument: Iron plug in concrete
 Depth: Flush with adjacent road surface

Indiana tie card references:
 IN02_T19NR2W10_80 IN02_T19NR2W11_72
 IN02_T19NR2W15_08 IN02_T19NR2W14_00

CORNER WITNESS DETAIL

SCALE 1" = 50' 

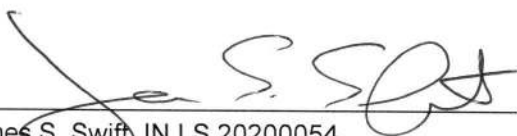


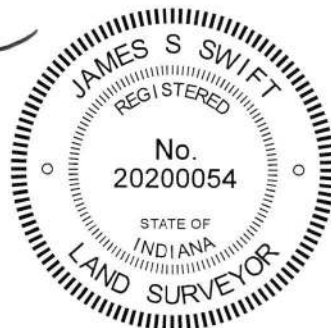
The iron monument in concrete was found in place and accepted as marking the corner. The original date of installation of this monument is not known and has not been confirmed by INDOT. A tie sheet in the Boone County Surveyor's Office with no date, but known to have been submitted to the office in 2001, shows the corner as an iron pin in concrete. The monument found in the field is believed to be the same monument at the same position as shown on the tie card. The monument fits well with the local evidence of the corner in the form of the north-south roadway of State Road 75, the east-west roadway of County Road 400 North and the fence to the west. The position of the corner fits well with the relative distances to proximate corners. The monument is believed to be widely accepted as marking the corner. No excavation was performed at this corner.

- A - Mag nail set in E. side, wood post, 2' a.g., 40.6'
- B - Boone County witness mark, flush, 47.6'
- C - Mag nail set in S. side power pole, 2' a.g., 77.2'
- D - Mag nail set in W. side wood post, 2' a.g., 56.5'

Boone County witness mark is a 3/8" diameter x 2' long rebar bearing a metal cap stamped "Boone County Witness Point."


 Kenneth E. Hedge, County Surveyor


 James S. Swift, IN LS 20200054
 July 3, 2018



Sugar Creek Township

Jefferson Township

Section 10 T19N, R2W	Section 11 T19N, R2W
Section 15 T19N, R2W	Section 14 T19N, R2W

SECTION CORNER RECORD

NW 400-850

BOONE COUNTY SURVEYOR'S OFFICE

State Plane grid coordinates NAD83 (2011):

Corner: North: 1766761.82 East: 3079842.14 (U.S. survey feet)

Witness: North: 1766762.52 East: 3079842.14 (U.S. survey feet)

Corner monument: 9 inch diameter round wood post

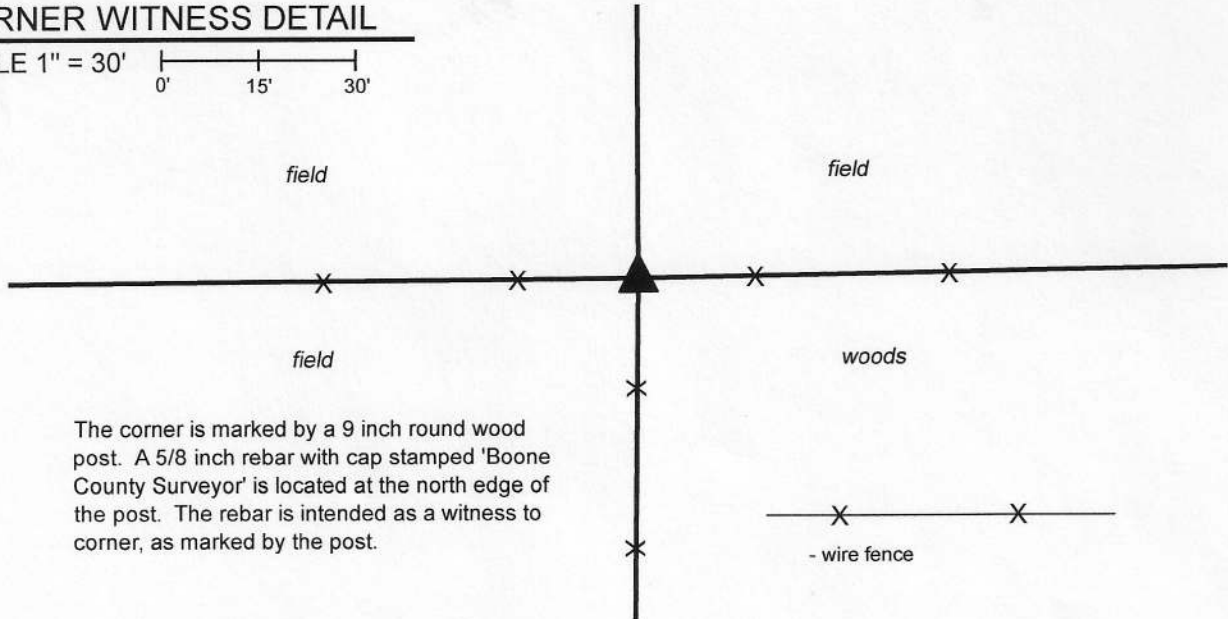
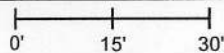
Witness monument: 5/8 inch rebar with metal cap stamped 'Boone County Surveyor', 3 inches a.g.

Indiana tie card references:

IN02_T19NR2W10_76 IN02_T19NR2W15_04

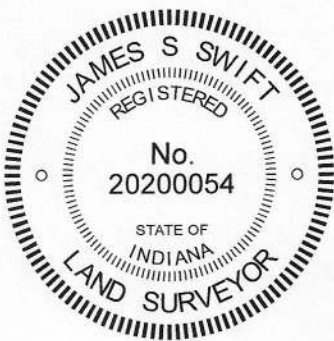
CORNER WITNESS DETAIL

SCALE 1" = 30'



The corner is marked by a 9 inch round wood post. A 5/8 inch rebar with cap stamped 'Boone County Surveyor' is located at the north edge of the post. The rebar is intended as a witness to corner, as marked by the post.

The 9 inch round wood corner post was found in place. The center of the post is held as the specific location of the corner. The rebar with "Boone County Surveyor" cap is intended as a witness to the corner. No specific descriptions of the corner were found in the Boone County Surveyor's Record beyond the original establishment of the corner as a wood post in 1829. A survey recorded as Instrument 201300008848 in the Office of the Boone County Recorder shows the corner as a wood corner post. No recent BCS tie cards were found referencing the corner. This corner was excavated on April 3, 2020. Prior to excavation, a 9 inch round wood corner post was observed at the intersection of standing fences to the east, south and west. The position of the post matched that called in the aforementioned survey recorded as Instrument 201300008848. Excavation in the vicinity of the post revealed numerous stones, both adjacent to the post and in the general vicinity. The stones were universally in haphazard orientation and none of them could be positively identified as representing purposely set corner stones. The position of the post is approximately 13 feet north and 5 feet east of a computed midpoint of a line connecting evidence of the section corners to the east and west (note; the position of the section corner to the west has not yet been excavated or fully determined), but the fence appears to be straight between the subject corner and the section corner to the west. No physical evidence contrary to the standing fence was found. The existing fence intersection was accepted as the best available evidence of the corner and the corner post was held as marking the corner. The center of the post is held as the specific location of the corner. A 5/8 inch rebar with metal cap stamped 'Boone County Surveyor' was set, partially in concrete, at the north edge of the post as a witness to the post. The rebar is 0.3 foot north of the north edge of the post.



Kenneth E. Hedge
Kenneth E. Hedge, County Surveyor

James S. Swift
James S. Swift, IN LS 20200054
April 29, 2020

Sugar Creek
Township

Section 10
T19N, R2W

Jefferson
Township

Section 15
T19N, R2W