

SECTION CORNER RECORD

NW 300-700

BOONE COUNTY SURVEYOR'S OFFICE

State Plane grid coordinates NAD83 (2011):

North: 1761442.59 East: 3087848.87 (U.S. survey feet)

Type of monument: Harrison, 4" disk 'Section Corner'

Depth: Three inches above surrounding ground

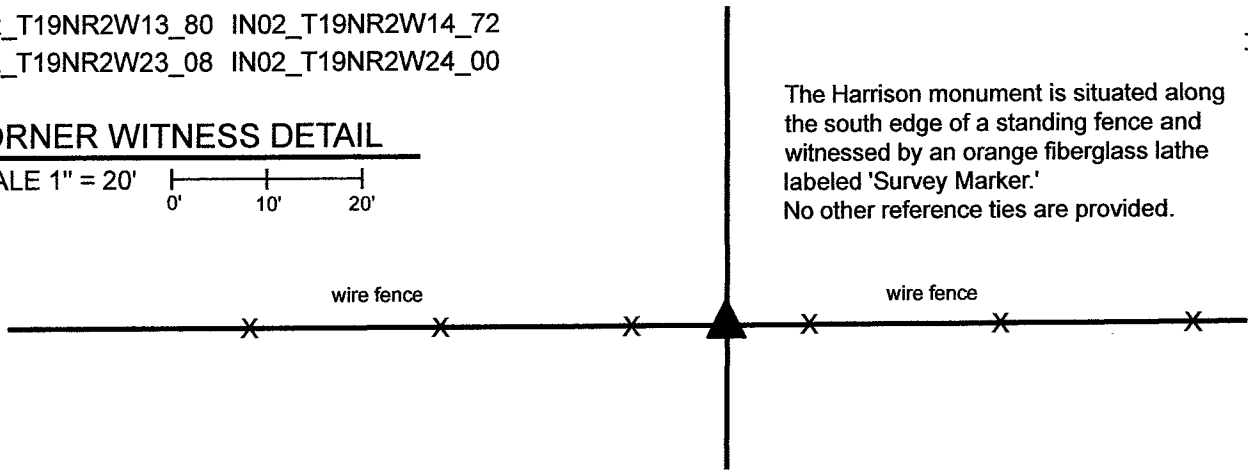
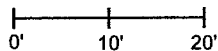
Indiana tie card references:

IN02_T19NR2W13_80 IN02_T19NR2W14_72

IN02_T19NR2W23_08 IN02_T19NR2W24_00

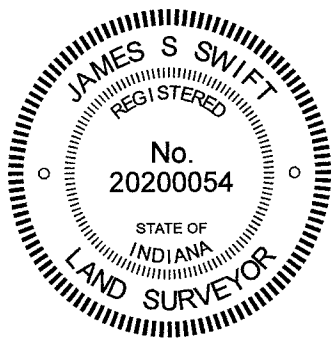
CORNER WITNESS DETAIL

SCALE 1" = 20'



The Harrison monument was set in place of numerous small rocks found indicating the position of a previously occupied corner. No specific descriptions of this corner were found in the BCS Surveyor's Record beyond the original establishment of the corner as a wood post in 1829. Neither recent BCS tie cards nor surveys recorded in the Boone County Recorder's Office were found referencing the corner. The Harrison Minor Plat, defining land in the east half of the northwest quarter of Section 24, does not reference this corner.

As noted with the documentation for the north quarter corner of Section 23 (see BCS Corner NW 700-350), evidence of the section corners, quarter corners and quarter-quarter corners do not align well in this vicinity. Reconnaissance was first performed for this corner in 2015. No readily visible evidence of this corner was observed on first inspection other than the standing east-west fence. The corner was studied much more closely in 2020. Thorough analysis of the relative positions of the various available evidence indicates that an approach to discovering the position of this corner with respect to the quarter and quarter-quarter corners to the east west yields uncertain results. However, it was observed that substantial evidence of the occupied lines which represent the west line of the east half of the northeast quarter of Section 23 (standing fence between ancient corner posts) and the east line of the west half of the northwest quarter of Section 24 (existing roadway of County Road 675 West) is present. It was further observed that this evidence defines lines which are nearly parallel with each other. For purposes of searching for evidence of the subject corner, an approximate position for the corner was established with respect to these parallel lines, as anchored on the west quarter corner of Section 24 (see BCS Corner NW 250-700). Careful probing and digging in the vicinity of this approximate position revealed that generally, very few rocks are located in the ground along the east-west fence, but that in one specific position, numerous small rocks were clustered together at depths between flush with the surface and up to 18 inches deep. This cluster of small rocks was centered on a position 2 feet west of the approximate position for the corner computed with respect to the evidence of the aforementioned parallel lines and west quarter corner of Section 24. This locus of rocks did not appear to be natural and did appear to represent evidence of a previously occupied corner, as it has been observed at numerous other corners throughout the county that rocks, large and small, are often clustered about a corner post. None of the found rocks appeared to represent a stone purposely set to mark the corner. Rather, the congregation of rocks appeared to represent evidence of a previously occupied corner. Given the lack of reference to this corner in deeds or surveys and given the harmony of this position with the best available evidence of older lines in the area as discussed above, the grouping of small rocks was accepted as the best available evidence of the original position of the corner. A Harrison monument was set at the center of the area defined by the found rocks on April 26, 2021. Similar to what is stated with the documentation for the north quarter corner of Section 23 (see BCS Corner NW 300-750), it is recommended that future surveyors be aware that the evidence of the section, quarter and quarter-quarter corners does not align well in this area, the east-west lines zig-zag substantially, and that holding computed midpoints for quarter-quarter corners will not result in positions which work with otherwise reliable evidence of the quarter-quarter corners to the east and west of this corner. Sensible, professional judgement should be applied to establishing the position of quarter-quarter corners in this area.



Kenneth E. Hedge
Kenneth E. Hedge, County Surveyor

James S. Swift
James S. Swift, IN LS 20200054

May 11, 2021

Jefferson Township

Section 14 T19N, R2W	Section 13 T19N, R2W
Section 23 T19N, R2W	Section 24 T19N, R2W

SECTION CORNER RECORD

NW 300-750

BOONE COUNTY SURVEYOR'S OFFICE

State Plane grid coordinates NAD83 (2011):

North: 1761439.47 East: 3085130.04 (U.S. survey feet)

Type of monument: Harrison, 4" disk 'Section Corner'

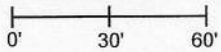
Depth: Three inches above surrounding ground

Indiana tie card references:

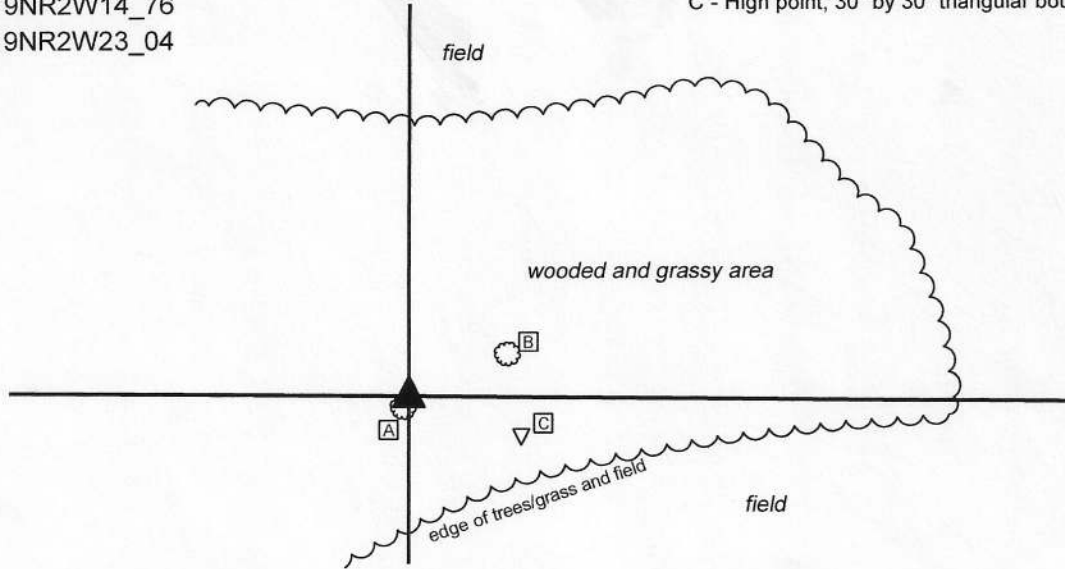
IN02_T19NR2W14_76

IN02_T19NR2W23_04

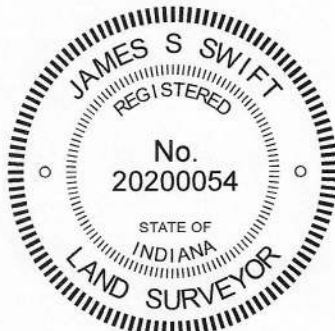
CORNER WITNESS DETAIL


SCALE 1" = 60' 

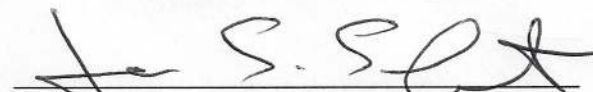
- A - N. edge 9" diameter locust tree, 4.0'
- B - W. edge 30" diameter cottonwood tree, 33.0'
- C - High point, 30" by 30" triangular boulder, 36.8'



The Harrison monument was set at the north edge of a metal brace post and in place of fragments of wood found representing the apparent remnants of a wood post. No specific description of this corner was found in the BCS Surveyor's Record beyond the original establishment of the corner as a wood post in 1819. However, the corner is mentioned in a sidebar entry associated with a record of December 3, 1844 which states "F is 3 poles too far west." The reference to corner F represents a reference to the subject corner, being the south quarter corner of section 14. Analysis of evidence of the proximate corners and adjoining deeds indicates that substantial irregularities are associated with the east-west lines with respect fences and corner posts from this corner 1/2 mile to the west and 1 mile to the east. The evidence of the 1/4 mile corners (quarter-quarter corners), or other intermediate corners does not line up well with the evidence of the 1/2 mile corners (section and quarter section corners.) It is clear that the description for the adjoining property to the north of this corner (l 2019002927) was written with respect to an apparent establishment of the position of this corner at the westerly prolongation of a fence found from approximately 1/4 mile east to 1/2 mile to the east. Though the corner is not called out in the description, its position is implied and the position computed with respect to deed calls fall substantially south of any available evidence in the vicinity of the corner. No survey was found associated with the creation of this description. A reliable piece of evidence of the south line of the southwest quarter of section 14, being an old corner post with fence to the north and fence cut-off toward the east, was found approximately 353 feet west of the subject corner. An approximate position for the corner was established at the prolongation of the line from the section corner to the west (BCS corner NW 300-800) through this post to an east-west position computed with respect to the corner to the west and reliable evidence of the section corner to the east (BCS corner NW 300-700, not yet fully established, but reliable evidence found), taking into account the reference in the 1844 record that the corner is 3 poles (49.5 feet) too far west. Reconnaissance and excavation in the vicinity of this computed position revealed a metal pole which bore the distinct characteristics of a metal brace for a wood corner post found with the southern end buried in the ground and the northern end generally flush with ground at a point approximately 4 feet south of the computed position. Excavation at the northern end of the brace revealed several small rocks and small fragments of wood which appeared to represent the remnants of a wood post. Given the general uncertainties of the evidence in this area, and accounting for the fact that the corner was evidently already well west of the expected position in 1844, the evidence of the brace and post remnants fit remarkably well with the other found evidence. The remnants of the post were accepted as the best available evidence of the corner. A Harrison monument was set at this position at the north end of the metal brace pole on April 24, 2020. It is noted that the computed position for the corner as implied in the deed for the adjoining property to the north is approximately 30 feet south and 5 feet east of this position. It is strongly recommended that surveyors who hold this corner take into consideration the local evidence of the quarter-quarter corners, particularly with respect to the corner 1/4 mile east of the subject corner and do not attempt to established straight half-mile lines with quarter-quarter corners established at computed midpoints. As noted above, the evidence of the east-west section lines in this area zig-zags, diverging from straight lines. Sensible judgement should be applied to the interpretation of that evidence.




 Kenneth E. Hedge, County Surveyor


 James S. Swift, IN LS 20200054

June 3, 2020

Jefferson Township

Section 14
T19N, R2W

Section 23
T19N, R2W

SECTION CORNER RECORD

BOONE COUNTY SURVEYOR'S OFFICE

NW 300-800

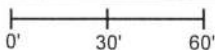
State Plane grid coordinates NAD83 (2011):
 North: 1761457.81 East: 3082495.68 (U.S. survey feet)

Type of monument: Iron plug in concrete
 Depth: Flush with adjacent road surface

Indiana tie card references:
 IN02_T19NR2W15_80 IN02_T19NR2W14_72
 IN02_T19NR2W22_08 IN02_T19NR2W23_00

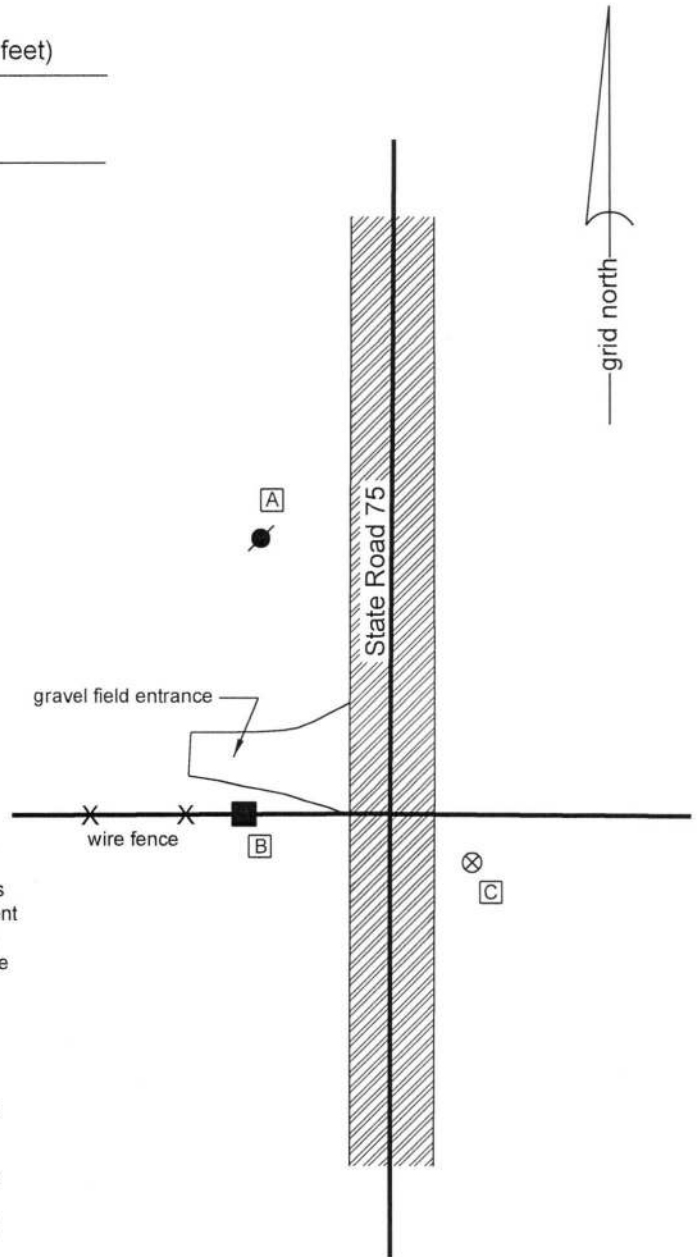
CORNER WITNESS DETAIL

SCALE 1" = 60'

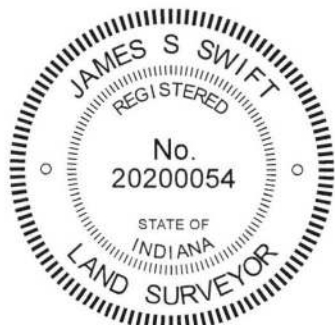


- A - Mag nail set in S.E. side power pole, 2' a.g., 92.7'
- B - Mag nail set in E. side wood post, 1.5' a.g., 41.9'
- C - Boone County witness mark, flush, 30.0'

Boone County witness mark is a 3/8" diameter x 2' long rebar bearing a metal cap stamped "Boone County Witness Point."



The iron monument in concrete was found in place and accepted as marking the corner. The original date of installation of this monument is not known and has not been confirmed by INDOT. A tie sheet in the Boone County Surveyor's Office with no date, but known to have been submitted to the office in 2001, shows the corner with no statement of the type of monument. The power poles which represent two of the reference objects for the distance ties on the undated tie card were removed in 2017 but the position of the monumented corner was confirmed with respect to those distance ties prior to removal of the references. The monument found in the field is believed to be at the same position as the corner shown on the tie card. The monument fits well with the local evidence of the corner in the form of the north-south roadway of State Road 75 and the fence to the west. The position of the corner fits well with the relative distances to proximate corners. The monument is believed to be widely accepted as marking the corner. No excavation was performed at this corner.



Kenneth E. Hedge
 Kenneth E. Hedge, County Surveyor

James S. Swift
 James S. Swift, IN LS 20200054
 July 3, 2018

Jefferson Township

Section 15 T19N, R2W	Section 14 T19N, R2W
Section 22 T19N, R2W	Section 23 T19N, R2W

SECTION CORNER RECORD

BOONE COUNTY SURVEYOR'S OFFICE

NW 350-700

State Plane grid coordinates NAD83 (2011):

North: 1764127.31 East: 3087842.76 (U.S. survey feet)

Type of monument: Harrison, 4" disk 'Section Corner'

Depth: Flush with adjacent road surface

Indiana tie card references:

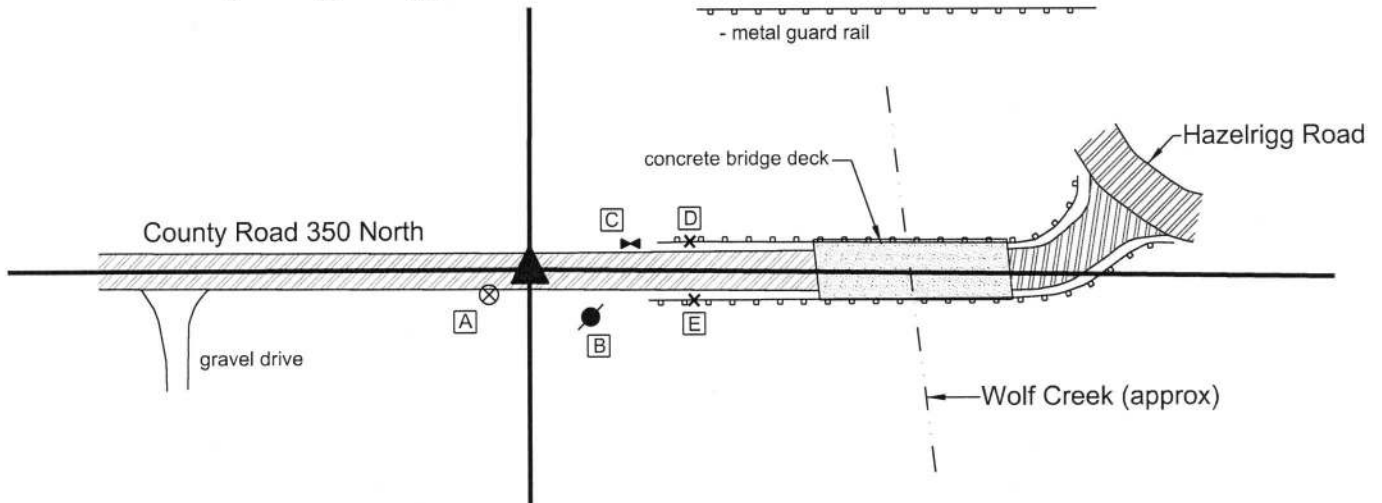
IN02_T19NR2W14_44 IN02_T19NR2W13_36



CORNER WITNESS DETAIL

SCALE 1" = 100'

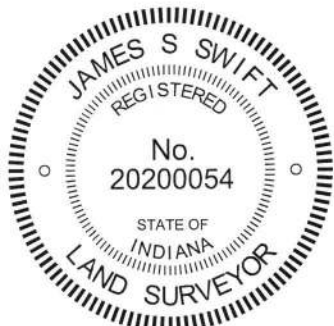
- A - Boone County witness mark, flush, 24.9'
- B - Mag nail set in W. side power pole, 5' a.g., 36.1'
- C - S. edge, single pole, 'SPEED LIMIT 40' sign, flush, 54.4'
- D - Chisel mark in top of guard rail post, 85.4'
- E - Chisel mark in top of guard rail post, 88.1'



The Harrison monument was set at a calculated position in accordance with the perpetuated position of the corner as shown on surveys by Willard E. Johnson, LS29600017, dated November 27, 2006 and December 18, 2006. These surveys created the original descriptions for the properties adjoining the corner to the south and southeast, respectively. The surveys were not found recorded in the Boone County Recorder's Office. The Surveyor's Report on these surveys explains the calculation of the position of the corner thoroughly, noting that deeds for the parent tract, adjoining properties, and a survey by Anderson & Associates were obtained to assist in determining the position of the corner and the limits of the parent tract. The report states that five feet of uncertainty should be associated with respect to the position of the corner, per the data used to determine its location. It is noted that the descriptions created by this survey tie to the center quarter corner of section 13 as a point of commencement. The position of the corner calculated with respect to the Johnson surveys was found to fit very well with the existing evidence of the older lines in section 13. Specifically, it is observed that the midpoint of the line connecting the calculated position of the corner and a railroad rail marking the center of section 13 agrees precisely with the intersection of the center of Hazelrigg Road and a well established fence to the north marking evidence of possession along the east line of the west half of the northwest quarter of section 13.

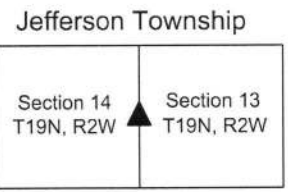
It is noted that the west line of the northwest quarter of section 13 (See also corner NW 400-700) does not align with the County Road 700 West / Hazelrigg Road, as this road diverges from the quarter section line, being well east of the line at the point where it begins to curve substantially towards the east, curving with Hazelrigg Road. It is also noted that the plans for the adjacent bridge, dated 1979, a copy of which was obtained from the Boone County Highway Department, appear show the N-S "approx. sec. line" to be in line with a fence to the north. This fence is approximately 75 feet west of the position of the corner as established by the Johnson surveys and confirmed by this document. Information from the bridge plans was not held as controlling in established the position of the corner and any right-of-way data associated with the bridge should be assessed with respect to this variation.

This corner was originally established as a wood post in 1829.



Kenneth E. Hedge
 Kenneth E. Hedge, County Surveyor

James S. Swift
 James S. Swift, IN LS 20200054
 October 17, 2017



SECTION CORNER RECORD

NW 350-800

BOONE COUNTY SURVEYOR'S OFFICE

State Plane grid coordinates NAD83 (2011):

North: 1764123.10 East: 3082512.40 (U.S. survey feet)

Type of monument: Iron plug in concrete

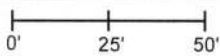
Depth: Flush with adjacent road surface

Indiana tie card references:

IN02_T19NR2W15_44 IN02_T19NR2W14_36

CORNER WITNESS DETAIL

SCALE 1" = 50'



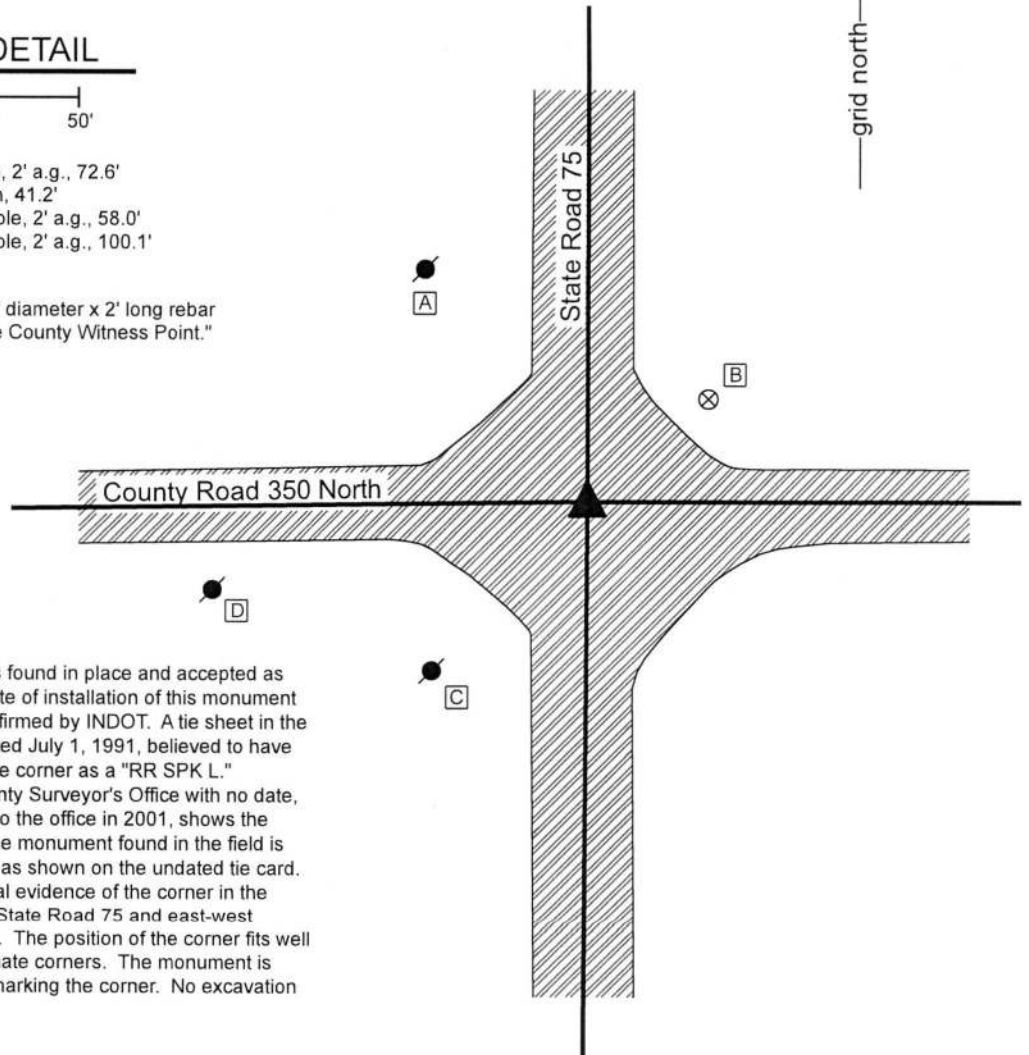
A - Mag nail set in E. side power pole, 2' a.g., 72.6'

B - Boone County witness mark, flush, 41.2'

C - Mag nail set in N.E. side power pole, 2' a.g., 58.0'

D - Mag nail set in N.E. side power pole, 2' a.g., 100.1'

Boone County witness mark is a 3/8" diameter x 2' long rebar bearing a metal cap stamped "Boone County Witness Point."



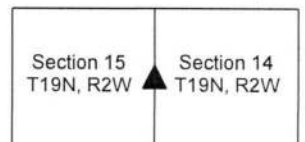
The iron monument in concrete was found in place and accepted as marking the corner. The original date of installation of this monument is not known and has not been confirmed by INDOT. A tie sheet in the Boone County Surveyor's Office dated July 1, 1991, believed to have been submitted by INDOT shows the corner as a "RR SPK L." Another tie sheet in the Boone County Surveyor's Office with no date, but known to have been submitted to the office in 2001, shows the corner as a "Rebar in concrete." The monument found in the field is believed to be the same monument as shown on the undated tie card. The monument fits well with the local evidence of the corner in the form of the north-south roadway of State Road 75 and east-west roadway of County Road 350 North. The position of the corner fits well with the relative distances to proximate corners. The monument is believed to be widely accepted as marking the corner. No excavation was performed at this corner.



Kenneth E. Hedge
Kenneth E. Hedge, County Surveyor

James S. Swift
James S. Swift, IN LS 20200054
July 3, 2018

Jefferson Township



SECTION CORNER RECORD

NW 400-700

BOONE COUNTY SURVEYOR'S OFFICE

State Plane grid coordinates NAD83 (2011):

North: 1766772.98 East: 3087848.30 (U.S. survey feet)

Type of monument: Harrison, 4" disk 'Section Corner'

Depth: One inch below adjacent road surface

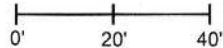
Indiana tie card references:

IN02_T19NR2W11_80 IN02_T19NR2W12_72

IN02_T19NR2W14_08 IN02_T19NR2W13_00

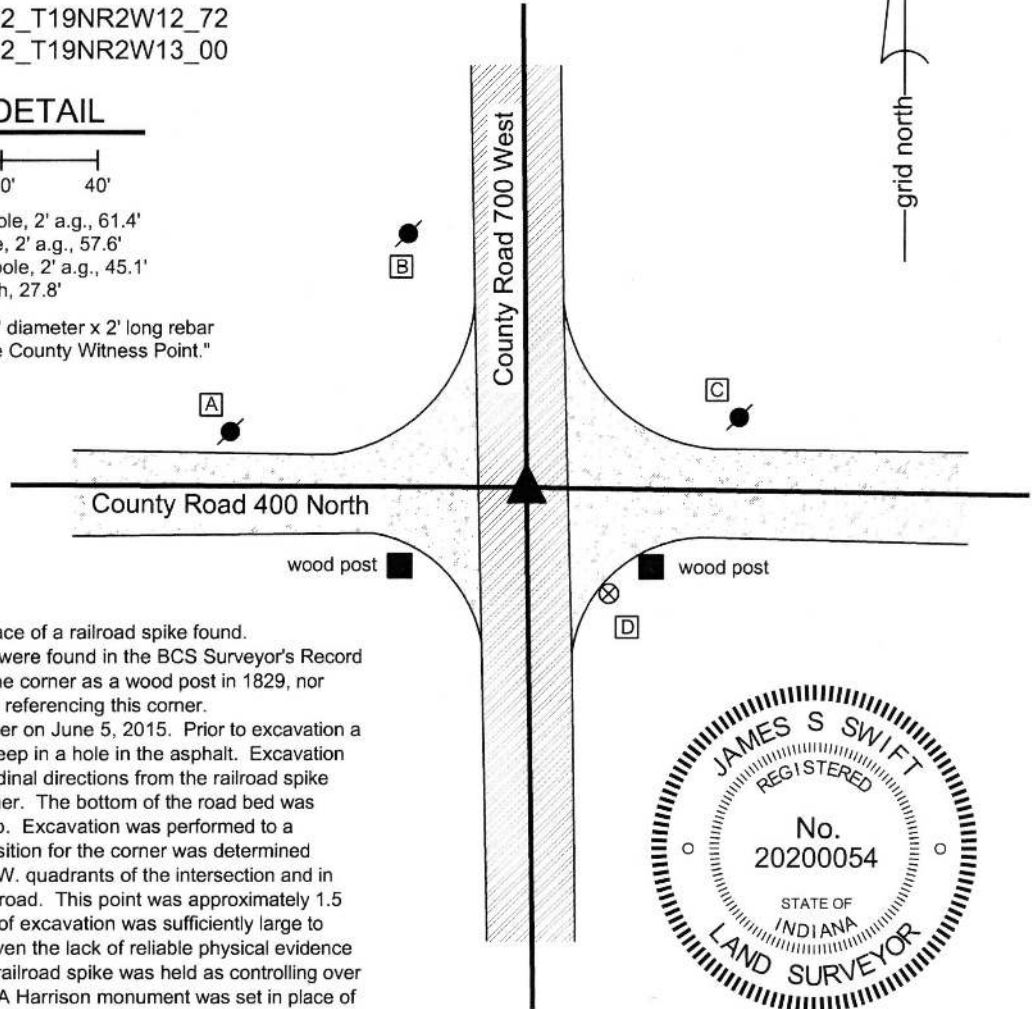
CORNER WITNESS DETAIL

SCALE 1" = 40'

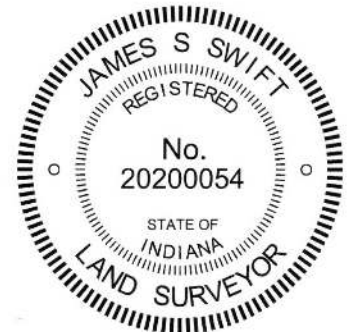


- A - Mag nail set in S.E. side power pole, 2' a.g., 61.4'
- B - Mag nail set in E. side power pole, 2' a.g., 57.6'
- C - Mag nail set in S.W. side power pole, 2' a.g., 45.1'
- D - Boone County witness mark, flush, 27.8'

Boone County witness mark is a 3/8" diameter x 2' long rebar bearing a metal cap stamped "Boone County Witness Point."



The Harrison monument was set in place of a railroad spike found. No specific descriptions of this corner were found in the BCS Surveyor's Record beyond the original establishment of the corner as a wood post in 1829, nor were any modern BCS tie cards found referencing this corner. Excavation was performed at this corner on June 5, 2015. Prior to excavation a railroad spike was found at 3 inches deep in a hole in the asphalt. Excavation of an area extending 2.5 feet in all cardinal directions from the railroad spike yielded no further evidence of the corner. The bottom of the road bed was found at approximately 20 inches deep. Excavation was performed to a minimum of 22 inches. A probable position for the corner was determined relative to the posts in the S.E. and S.W. quadrants of the intersection and in relation to the apparent centers of the road. This point was approximately 1.5 feet northwest of the spike. The area of excavation was sufficiently large to encompass this probable position. Given the lack of reliable physical evidence of the corner itself, the position of the railroad spike was held as controlling over the accessory evidence of the posts. A Harrison monument was set in place of the railroad spike, which was removed during excavation. This corner was originally established as a wood post in 1829.



Kenneth E. Hedge
 Kenneth E. Hedge, County Surveyor

James S. Swift
 James S. Swift, IN LS 20200054

March 28, 2015

Sugar Creek
 Township

Section 11 T19N, R2W	Section 12 T19N, R2W
Section 14 T19N, R2W	Section 13 T19N, R2W

Jefferson
 Township

SECTION CORNER RECORD

BOONE COUNTY SURVEYOR'S OFFICE

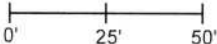
NW 400-800

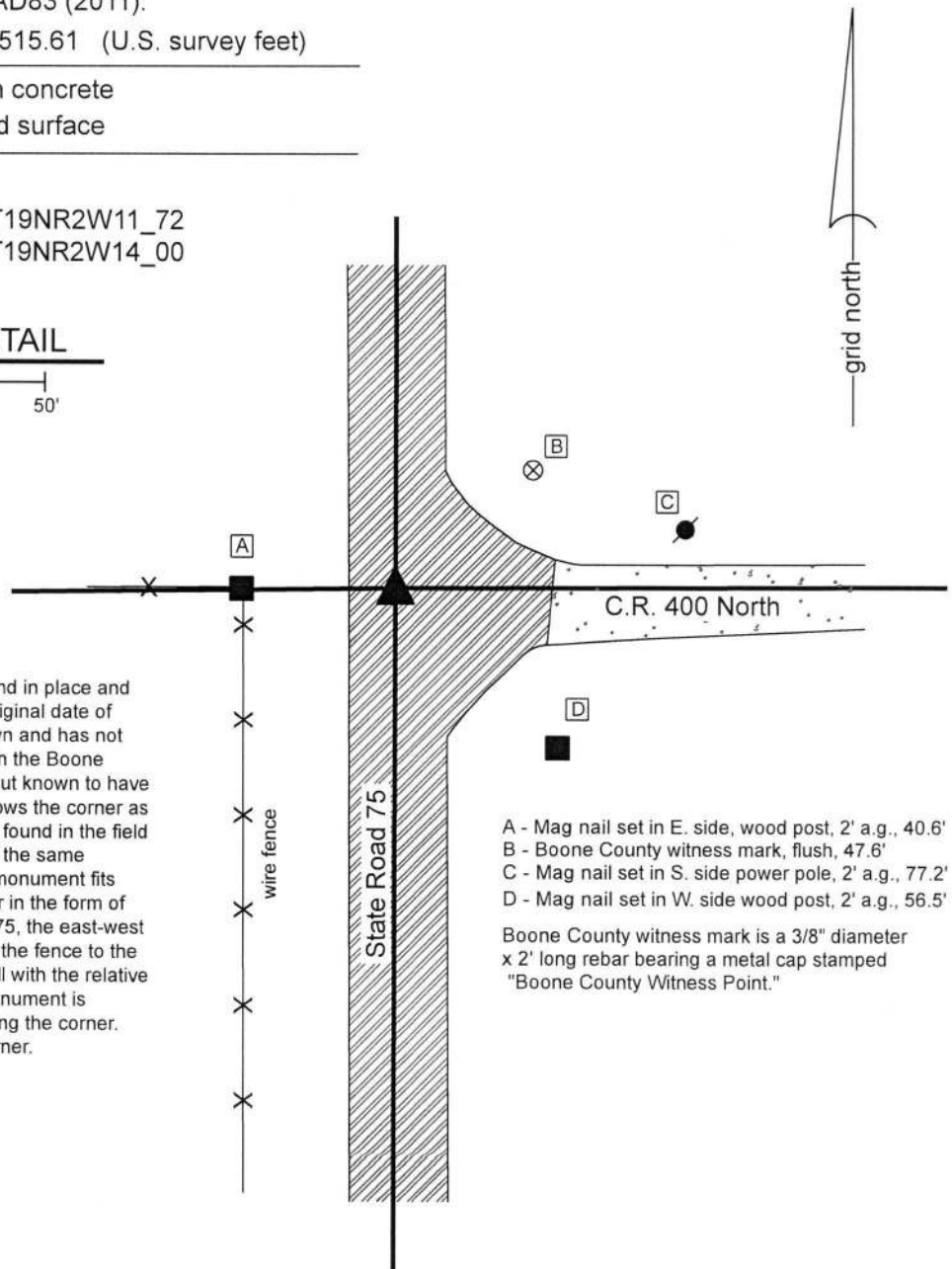
State Plane grid coordinates NAD83 (2011):
 North: 1766780.79 East: 3082515.61 (U.S. survey feet)

Type of monument: Iron plug in concrete
 Depth: Flush with adjacent road surface

Indiana tie card references:
 IN02_T19NR2W10_80 IN02_T19NR2W11_72
 IN02_T19NR2W15_08 IN02_T19NR2W14_00

CORNER WITNESS DETAIL

SCALE 1" = 50' 

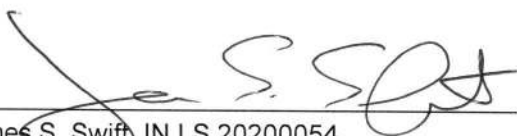


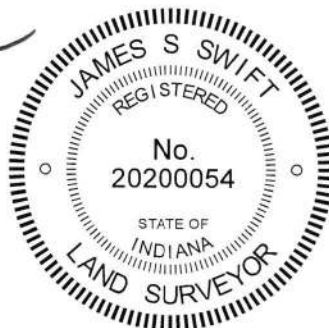
The iron monument in concrete was found in place and accepted as marking the corner. The original date of installation of this monument is not known and has not been confirmed by INDOT. A tie sheet in the Boone County Surveyor's Office with no date, but known to have been submitted to the office in 2001, shows the corner as an iron pin in concrete. The monument found in the field is believed to be the same monument at the same position as shown on the tie card. The monument fits well with the local evidence of the corner in the form of the north-south roadway of State Road 75, the east-west roadway of County Road 400 North and the fence to the west. The position of the corner fits well with the relative distances to proximate corners. The monument is believed to be widely accepted as marking the corner. No excavation was performed at this corner.

- A - Mag nail set in E. side, wood post, 2' a.g., 40.6'
- B - Boone County witness mark, flush, 47.6'
- C - Mag nail set in S. side power pole, 2' a.g., 77.2'
- D - Mag nail set in W. side wood post, 2' a.g., 56.5'

Boone County witness mark is a 3/8" diameter x 2' long rebar bearing a metal cap stamped "Boone County Witness Point."


 Kenneth E. Hedge, County Surveyor


 James S. Swift, IN LS 20200054
 July 3, 2018



Sugar Creek
 Township

Jefferson
 Township

Section 10 T19N, R2W	Section 11 T19N, R2W
Section 15 T19N, R2W	Section 14 T19N, R2W