

SECTION CORNER RECORD

NW 300-700

BOONE COUNTY SURVEYOR'S OFFICE

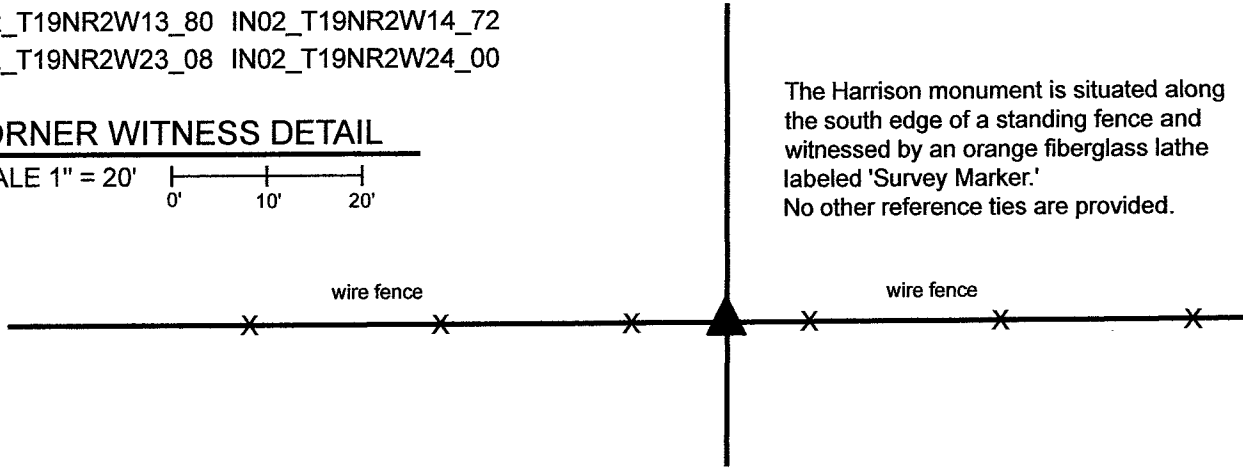
State Plane grid coordinates NAD83 (2011):
North: 1761442.59 East: 3087848.87 (U.S. survey feet)

Type of monument: Harrison, 4" disk 'Section Corner'
Depth: Three inches above surrounding ground

Indiana tie card references:
IN02_T19NR2W13_80 IN02_T19NR2W14_72
IN02_T19NR2W23_08 IN02_T19NR2W24_00

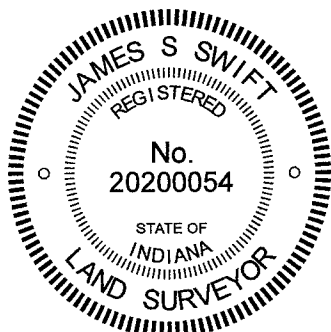
CORNER WITNESS DETAIL

SCALE 1" = 20'
0' 10' 20'



The Harrison monument was set in place of numerous small rocks found indicating the position of a previously occupied corner. No specific descriptions of this corner were found in the BCS Surveyor's Record beyond the original establishment of the corner as a wood post in 1829. Neither recent BCS tie cards nor surveys recorded in the Boone County Recorder's Office were found referencing the corner. The Harrison Minor Plat, defining land in the east half of the northwest quarter of Section 24, does not reference this corner.

As noted with the documentation for the north quarter corner of Section 23 (see BCS Corner NW 700-350), evidence of the section corners, quarter corners and quarter-quarter corners do not align well in this vicinity. Reconnaissance was first performed for this corner in 2015. No readily visible evidence of this corner was observed on first inspection other than the standing east-west fence. The corner was studied much more closely in 2020. Thorough analysis of the relative positions of the various available evidence indicates that an approach to discovering the position of this corner with respect to the quarter and quarter-quarter corners to the east west yields uncertain results. However, it was observed that substantial evidence of the occupied lines which represent the west line of the east half of the northeast quarter of Section 23 (standing fence between ancient corner posts) and the east line of the west half of the northwest quarter of Section 24 (existing roadway of County Road 675 West) is present. It was further observed that this evidence defines lines which are nearly parallel with each other. For purposes of searching for evidence of the subject corner, an approximate position for the corner was established with respect to these parallel lines, as anchored on the west quarter corner of Section 24 (see BCS Corner NW 250-700). Careful probing and digging in the vicinity of this approximate position revealed that generally, very few rocks are located in the ground along the east-west fence, but that in one specific position, numerous small rocks were clustered together at depths between flush with the surface and up to 18 inches deep. This cluster of small rocks was centered on a position 2 feet west of the approximate position for the corner computed with respect to the evidence of the aforementioned parallel lines and west quarter corner of Section 24. This locus of rocks did not appear to be natural and did appear to represent evidence of a previously occupied corner, as it has been observed at numerous other corners throughout the county that rocks, large and small, are often clustered about a corner post. None of the found rocks appeared to represent a stone purposely set to mark the corner. Rather, the congregation of rocks appeared to represent evidence of a previously occupied corner. Given the lack of reference to this corner in deeds or surveys and given the harmony of this position with the best available evidence of older lines in the area as discussed above, the grouping of small rocks was accepted as the best available evidence of the original position of the corner. A Harrison monument was set at the center of the area defined by the found rocks on April 26, 2021. Similar to what is stated with the documentation for the north quarter corner of Section 23 (see BCS Corner NW 300-750), it is recommended that future surveyors be aware that the evidence of the section, quarter and quarter-quarter corners does not align well in this area, the east-west lines zig-zag substantially, and that holding computed midpoints for quarter-quarter corners will not result in positions which work with otherwise reliable evidence of the quarter-quarter corners to the east and west of this corner. Sensible, professional judgement should be applied to establishing the position of quarter-quarter corners in this area.



Kenneth E. Hedge
Kenneth E. Hedge, County Surveyor

James S. Swift
James S. Swift, IN LS 20200054
May 11, 2021

Jefferson Township

Section 14 T19N, R2W	Section 13 T19N, R2W
Section 23 T19N, R2W	Section 24 T19N, R2W

SECTION CORNER RECORD

NW 350-600

BOONE COUNTY SURVEYOR'S OFFICE

State Plane grid coordinates NAD83 (2011):

Corner 1: North: 1764077.58 East: 3093123.94 (U.S. survey feet)

Corner 2: North: 1764108.50 East: 3093123.94 (U.S. survey feet)

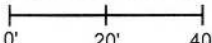
Type of monument: Harrison, 4" disk 'Section Corner'

Depth: six inches below adjacent gravel road surface

Indiana tie card references:

IN02_T19NR2W13_44 IN02_T19NR1W18_36

CORNER WITNESS DETAIL

SCALE 1" = 40' 

The Harrison monuments were each set in place of vertical sections of railroad rails.

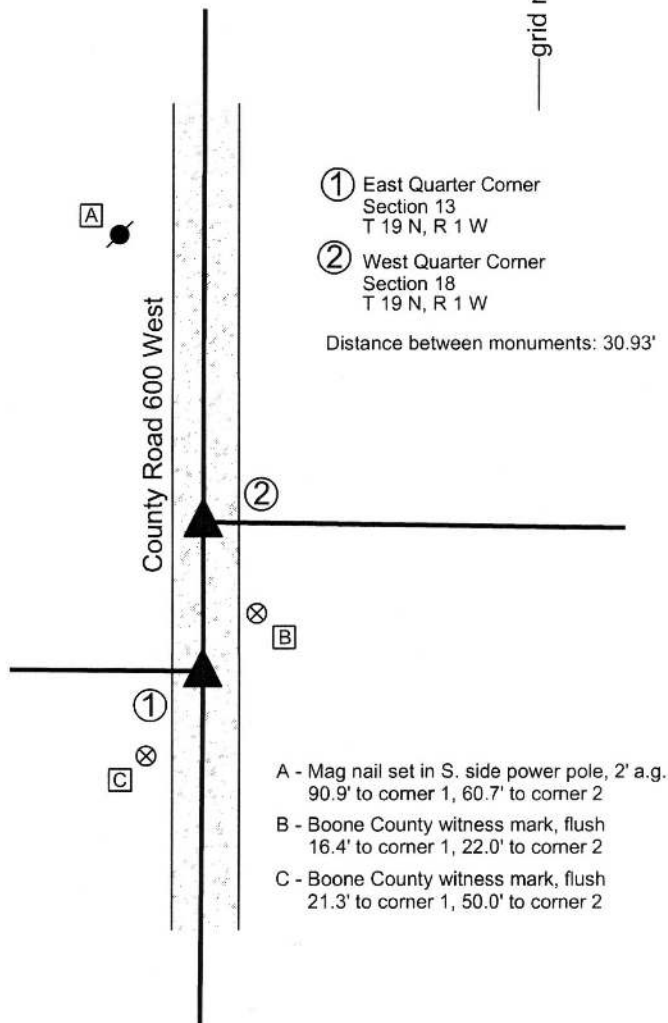
No specific descriptions of corner 1 were found in the BCS Surveyor's Record beyond the original establishment of the corner as a wood post in 1819. More information is available for corner 2, with respect to which a BCS record of April 21, 1892 states "Established by running line from A to A of Section 20. Set rock marked + 18.12.7 at corner."

A BCS tie card for corner 2, dated June 3, 1971, states "Stone located. Put in RRR." A BCS tie card for corner 1, dated June 4, 1971, states "No stone - RRR put in."

This corner was excavated on June 2, 2015. Prior to excavation, two 5/8 inch diameter rebars were found in the vicinity of corner 2, both were situated horizontally, approximately perpendicular to the gravel roadway. Both appeared to have been substantially disturbed by road grading equipment. In 2011, vertical sections of railroad rail had been found marking each of the corners. These monuments were located by RTK GPS on May 25, 2011. At the time of excavation, no rails were found. Subsequent investigation revealed that the rails had been removed by BC Highway Department employees to facilitate grading of the road.

Excavation at both corners revealed no further evidence. The rails found in 2011 were accepted as representing the monuments set in 1971 and the positions of the corners were perpetuated from the previous GPS positions. Given the superiority of the records for corner 2, with a stone called set in 1892 and a stone found and replaced with a rail in 1971, the position of corner 2 was held firm. A Harrison monument was set at corner 2 in the position of the rail, as found and located in 2011. Corner 1 was established on the range line as defined by a prolongation of the line from the stone found at the closing corner 1/2 mile north through corner 2. A Harrison monument was set at 30.9 feet (the distance measured between the rails in 2011) south of corner 2. This point falls 0.2 foot east of the former position of the rail at corner 1. Note, the calculated government closing distance between these corners is 46 links, which equates to 30.3 feet.

Corner 1 was originally established as a wood post in 1819. Corner 2 was not set on the original federal survey, but was firmly established in 1892, as noted above.

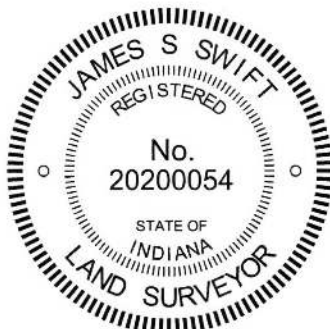


① East Quarter Corner
Section 13
T 19 N, R 1 W

② West Quarter Corner
Section 18
T 19 N, R 1 W

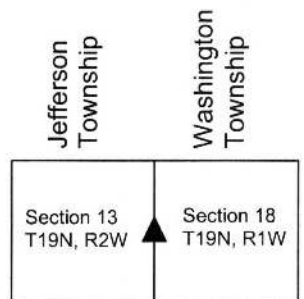
Distance between monuments: 30.93'

- A - Mag nail set in S. side power pole, 2' a.g. 90.9' to corner 1, 60.7' to corner 2
- B - Boone County witness mark, flush 16.4' to corner 1, 22.0' to corner 2
- C - Boone County witness mark, flush 21.3' to corner 1, 50.0' to corner 2



Kenneth E. Hedge
Kenneth E. Hedge, County Surveyor

James S. Swift
James S. Swift, IN LS 20200054
March 24, 2016



SECTION CORNER RECORD

NW 350-650

BOONE COUNTY SURVEYOR'S OFFICE

State Plane grid coordinates NAD83 (2011):

North: 1764096.44 East: 3090486.41 (U.S. survey feet)

Type of monument: Harrison, 4" disk 'Section Corner'

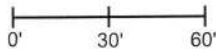
Depth: Five inches above adjacent ground

Indiana tie card references:

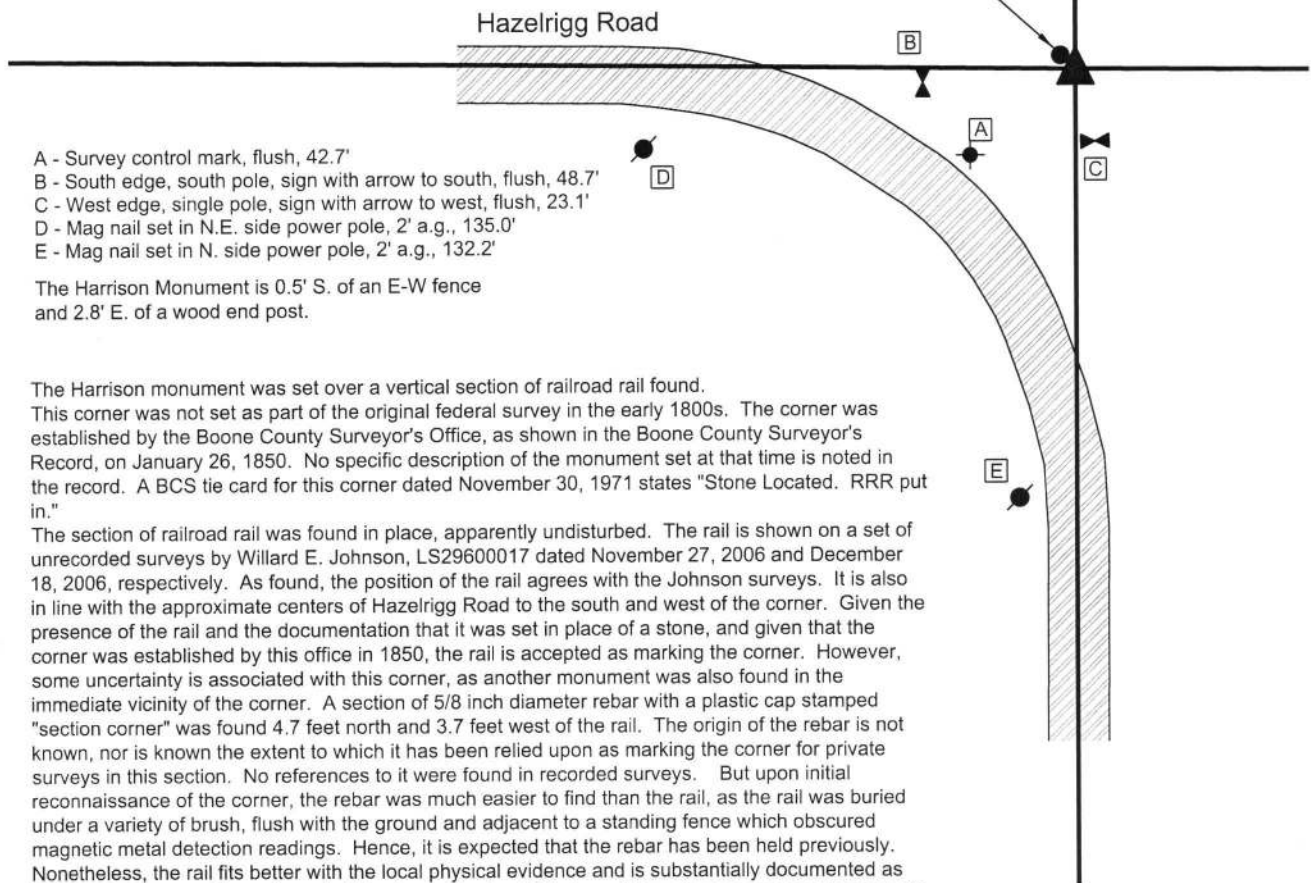
IN02_T19NR2W13_40

CORNER WITNESS DETAIL

SCALE 1" = 60'



Note: Rebar with cap stamped "Section Corner" found 4.7' N & 3.7' W of corner (see report).

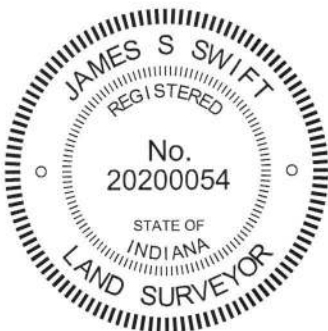


- A - Survey control mark, flush, 42.7'
- B - South edge, south pole, sign with arrow to south, flush, 48.7'
- C - West edge, single pole, sign with arrow to west, flush, 23.1'
- D - Mag nail set in N.E. side power pole, 2' a.g., 135.0'
- E - Mag nail set in N. side power pole, 2' a.g., 132.2'

The Harrison Monument is 0.5' S. of an E-W fence and 2.8' E. of a wood end post.

The Harrison monument was set over a vertical section of railroad rail found. This corner was not set as part of the original federal survey in the early 1800s. The corner was established by the Boone County Surveyor's Office, as shown in the Boone County Surveyor's Record, on January 26, 1850. No specific description of the monument set at that time is noted in the record. A BCS tie card for this corner dated November 30, 1971 states "Stone Located. RRR put in."

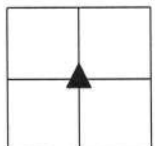
The section of railroad rail was found in place, apparently undisturbed. The rail is shown on a set of unrecorded surveys by Willard E. Johnson, LS29600017 dated November 27, 2006 and December 18, 2006, respectively. As found, the position of the rail agrees with the Johnson surveys. It is also in line with the approximate centers of Hazelrigg Road to the south and west of the corner. Given the presence of the rail and the documentation that it was set in place of a stone, and given that the corner was established by this office in 1850, the rail is accepted as marking the corner. However, some uncertainty is associated with this corner, as another monument was also found in the immediate vicinity of the corner. A section of 5/8 inch diameter rebar with a plastic cap stamped "section corner" was found 4.7 feet north and 3.7 feet west of the rail. The origin of the rebar is not known, nor is known the extent to which it has been relied upon as marking the corner for private surveys in this section. No references to it were found in recorded surveys. But upon initial reconnaissance of the corner, the rebar was much easier to find than the rail, as the rail was buried under a variety of brush, flush with the ground and adjacent to a standing fence which obscured magnetic metal detection readings. Hence, it is expected that the rebar has been held previously. Nonetheless, the rail fits better with the local physical evidence and is substantially documented as marking the corner. The rail was left in place. The top 18 inches of the rail were encased in concrete and a Harrison monument, broken off at 5 inches tall, was set directly over the rail.



Kenneth E. Hedge
Kenneth E. Hedge, County Surveyor

James S. Swift
James S. Swift, IN LS 20200054
October 11, 2017

Section 13
T19N, R2W



Jefferson
Township

SECTION CORNER RECORD

BOONE COUNTY SURVEYOR'S OFFICE

NW 350-700

State Plane grid coordinates NAD83 (2011):

North: 1764127.31 East: 3087842.76 (U.S. survey feet)

Type of monument: Harrison, 4" disk 'Section Corner'

Depth: Flush with adjacent road surface

Indiana tie card references:

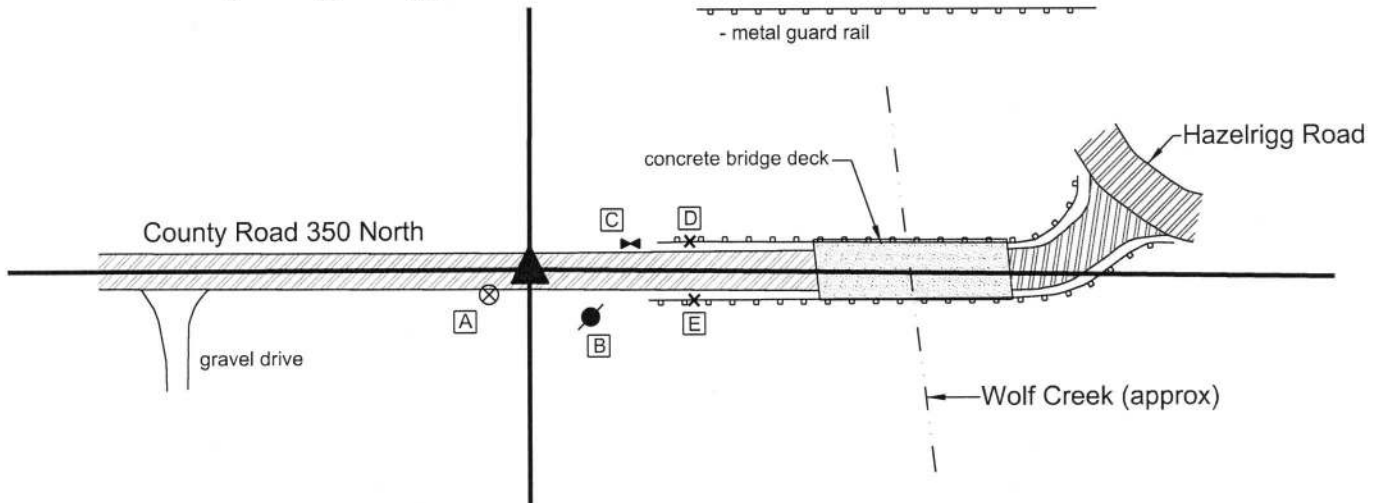
IN02_T19NR2W14_44 IN02_T19NR2W13_36



CORNER WITNESS DETAIL

SCALE 1" = 100'

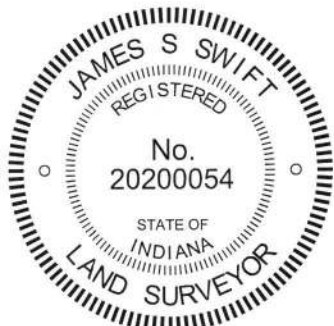
- A - Boone County witness mark, flush, 24.9'
- B - Mag nail set in W. side power pole, 5' a.g., 36.1'
- C - S. edge, single pole, 'SPEED LIMIT 40' sign, flush, 54.4'
- D - Chisel mark in top of guard rail post, 85.4'
- E - Chisel mark in top of guard rail post, 88.1'



The Harrison monument was set at a calculated position in accordance with the perpetuated position of the corner as shown on surveys by Willard E. Johnson, LS29600017, dated November 27, 2006 and December 18, 2006. These surveys created the original descriptions for the properties adjoining the corner to the south and southeast, respectively. The surveys were not found recorded in the Boone County Recorder's Office. The Surveyor's Report on these surveys explains the calculation of the position of the corner thoroughly, noting that deeds for the parent tract, adjoining properties, and a survey by Anderson & Associates were obtained to assist in determining the position of the corner and the limits of the parent tract. The report states that five feet of uncertainty should be associated with respect to the position of the corner, per the data used to determine its location. It is noted that the descriptions created by this survey tie to the center quarter corner of section 13 as a point of commencement. The position of the corner calculated with respect to the Johnson surveys was found to fit very well with the existing evidence of the older lines in section 13. Specifically, it is observed that the midpoint of the line connecting the calculated position of the corner and a railroad rail marking the center of section 13 agrees precisely with the intersection of the center of Hazelrigg Road and a well established fence to the north marking evidence of possession along the east line of the west half of the northwest quarter of section 13.

It is noted that the west line of the northwest quarter of section 13 (See also corner NW 400-700) does not align with the County Road 700 West / Hazelrigg Road, as this road diverges from the quarter section line, being well east of the line at the point where it begins to curve substantially towards the east, curving with Hazelrigg Road. It is also noted that the plans for the adjacent bridge, dated 1979, a copy of which was obtained from the Boone County Highway Department, appear show the N-S "approx. sec. line" to be in line with a fence to the north. This fence is approximately 75 feet west of the position of the corner as established by the Johnson surveys and confirmed by this document. Information from the bridge plans was not held as controlling in established the position of the corner and any right-of-way data associated with the bridge should be assessed with respect to this variation.

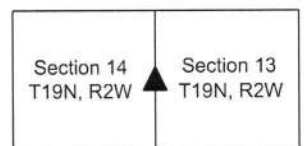
This corner was originally established as a wood post in 1829.



Kenneth E. Hedge
 Kenneth E. Hedge, County Surveyor

James S. Swift
 James S. Swift, IN LS 20200054
 October 17, 2017

Jefferson Township



SECTION CORNER RECORD

NW 400-600

BOONE COUNTY SURVEYOR'S OFFICE

State Plane grid coordinates NAD83 (2011):

North: 1766726.97 East: 3093128.13 (U.S. survey feet)

Type of monument: Harrison, 4" disk 'Section Corner'

Depth: Six inches below adjacent gravel road surface

Indiana tie card references:

IN02_T19NR2W12_80 IN02_T19NR1W07_72

IN02_T19NR2W13_08 IN02_T19NR1W18_00

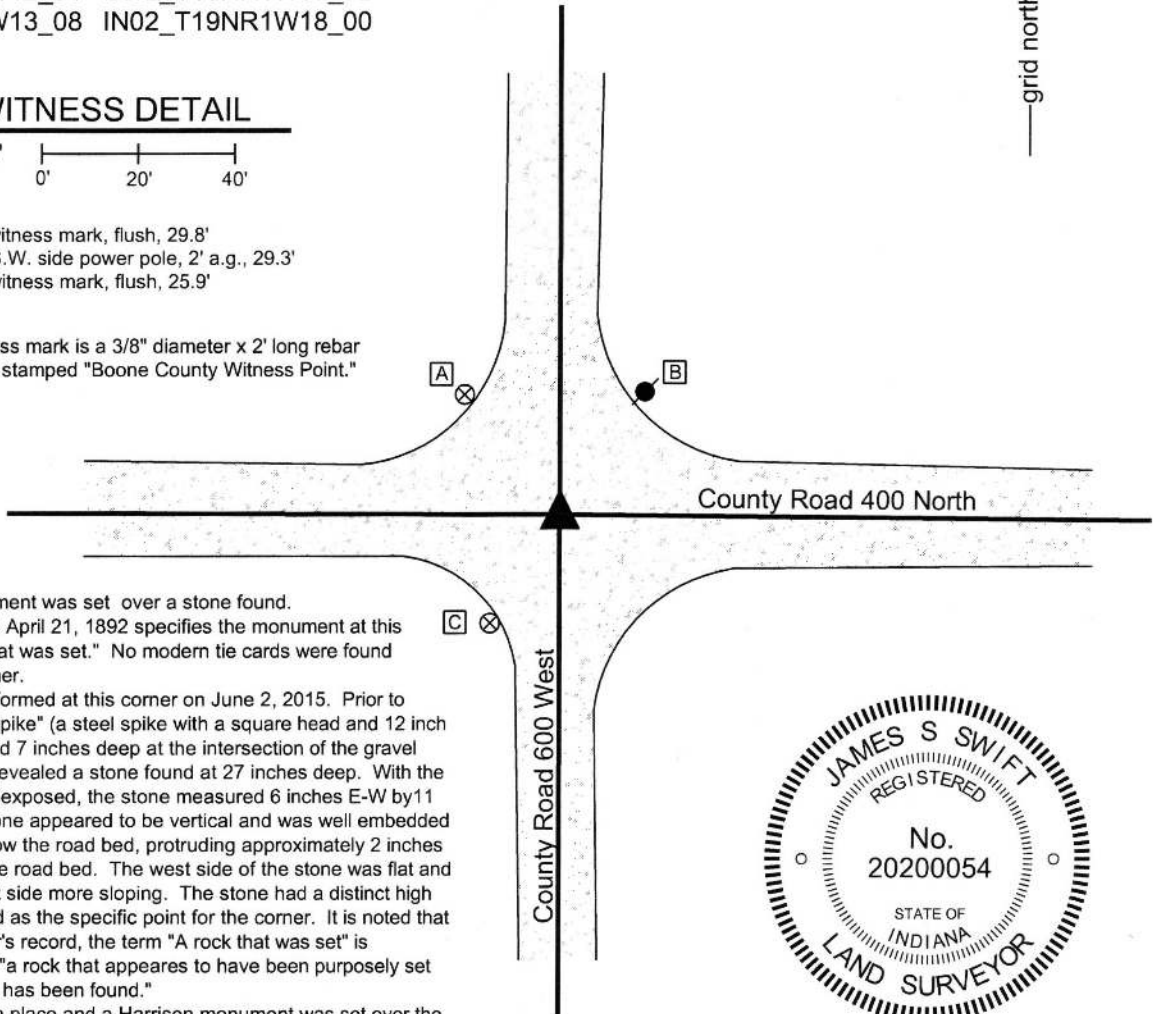


CORNER WITNESS DETAIL

SCALE 1" = 40'

- A - Boone County witness mark, flush, 29.8'
- B - Mag nail set in S.W. side power pole, 2' a.g., 29.3'
- C - Boone County witness mark, flush, 25.9'

Boone County witness mark is a 3/8" diameter x 2' long rebar bearing a metal cap stamped "Boone County Witness Point."

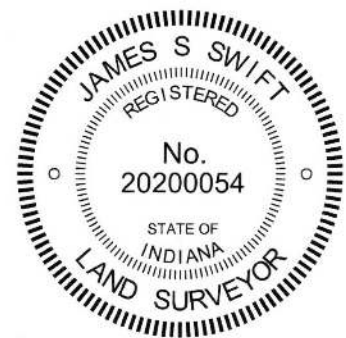


The Harrison monument was set over a stone found. A BCS record dated April 21, 1892 specifies the monument at this corner as "A rock that was set." No modern tie cards were found referencing this corner.

Excavation was performed at this corner on June 2, 2015. Prior to excavation, a "bolt spike" (a steel spike with a square head and 12 inch long shaft) was found 7 inches deep at the intersection of the gravel roads. Excavation revealed a stone found at 27 inches deep. With the top 11 inches stone exposed, the stone measured 6 inches E-W by 11 inches N-S. The stone appeared to be vertical and was well embedded in the clay layer below the road bed, protruding approximately 2 inches into the bottom of the road bed. The west side of the stone was flat and vertical and the east side more sloping. The stone had a distinct high point which was held as the specific point for the corner. It is noted that in the BCS Surveyor's record, the term "A rock that was set" is interpreted to mean "a rock that appears to have been purposely set as a monument and has been found."

The stone was left in place and a Harrison monument was set over the top, high point. The bolt spike, removed during excavation, had been 0.6 of a foot north of the high point of the stone.

This corner was originally established as a wood post in 1819. The federal notes from 1829 subdivision of the township call the corner as closing on the existing post. Hence, though this corner falls on a range line, it is not a double corner.



Washington Township

Kenneth E. Hedge, County Surveyor

James S. Swift, IN LS 20200054

March 24, 2016

Sugar Creek Township

Jefferson Township

Section 12 T19N, R2W	Section 7 T19N, R1W
Section 13 T19N, R2W	Section 18 T19N, R1W

PHOTOGRAPHIC DOCUMENTATION

Date of photography: June 2, 2015

The stone as it was originally exposed.



The stone more fully exposed.



View from above the stone looking west along County Road 400 North.



View from the north, looking across the stone and south along County Road 600 West.



For details and documentation, refer to related sheet "Section Corner Record."

SECTION CORNER RECORD

NW 400-650

BOONE COUNTY SURVEYOR'S OFFICE

State Plane grid coordinates NAD83 (2011):

North: 1766733.56 East: 3090488.08 (U.S. survey feet)

Type of monument: Harrison, 4" disk 'Section Corner'

Depth: Six inches below adjacent gravel road surface

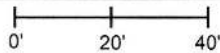
Indiana tie card references:

IN02_T19NR2W12_76

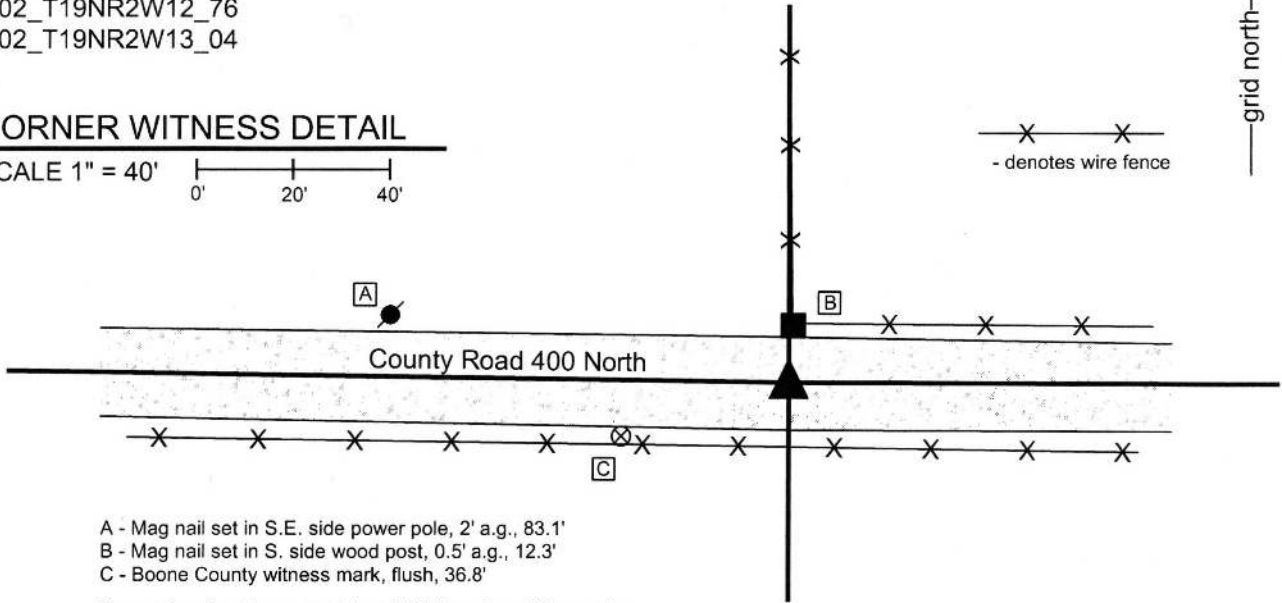
IN02_T19NR2W13_04

CORNER WITNESS DETAIL

SCALE 1" = 40'



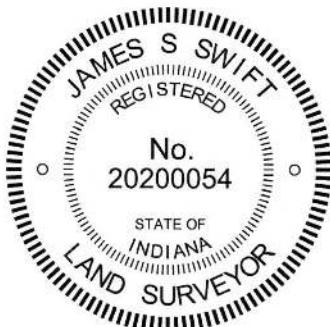
X X
- denotes wire fence



- A - Mag nail set in S.E. side power pole, 2' a.g., 83.1'
- B - Mag nail set in S. side wood post, 0.5' a.g., 12.3'
- C - Boone County witness mark, flush, 36.8'

Boone County witness mark is a 3/8" diameter x 2' long rebar bearing a metal cap stamped "Boone County Witness Point."

The Harrison monument was set per local evidence and at a position computed with respect to adjacent corners. No specific descriptions of this corner were found in the BCS Surveyor's record beyond the original establishment of the corner as a wood post in 1829. No modern tie cards were found referencing this corner. This corner was excavated on June 15, 2015. Prior to excavation, no artificial monuments were found marking the corner. Significant evidence of the corner does exist in the form of the east-west roadway and a fence to the north. Excavation of a seven by seven foot area centered on the point where the prolongation of the fence intersects the roadway yielded no further evidence of the corner. A position for the corner was established in the approximate center of the roadway at a point equidistant from the adjacent section corners to the east and west, respectively. This point falls nearly in line with the fence to the north. As so established, the corner is along the west edge of the corner post on the north side of the road. Note, this position is not on a straight line between the two section corners, as the existing E-W gravel road was held as the controlling evidence of the position of the corner in the north-south dimension. A pure evidence based interpretation of the corner might place it slightly (less than one foot) further east, directly in line with the fence to the north. However, it has been observed throughout the county that in many situations, the corner falls slightly one side or another of an existing fence. In this situation, it is apparent that the north-south fence is of similar character to other fencing on the property to the northeast of the corner. Hence, by establishing the corner equidistant from the adjacent section corners to the east and west, the fence is situated on the property to the east rather than splitting the line. Based on experience with other corners, this appeared to be the best solution in the field. Up to one foot of uncertainty may be associated with the position of the corner in an E-W dimension. Analysis of evidence of the quarter-quarter corners to the east and west of the subject corner and the relative locations of this evidence with respect to the relevant section corners and subject corner did not yield a conclusive, defensible position for the corner. This corner was originally established as a wood post in 1829.



Kenneth E. Hedge
Kenneth E. Hedge, County Surveyor

James S. Swift
James S. Swift, IN LS 20200054
March 28, 2015

Sugar Creek
Township

Section 12
T19N, R2W

Jefferson
Township

Section 13
T19N, R2W

PHOTOGRAPHIC DOCUMENTATION

Date of photography: July 2, 2015

Several of the found stones as originally exposed, including the stone held as the corner.



The stone held as marking the corner more fully exposed, after the other stones were removed.



The stone held as marking the corner, fully exposed, from above.



View from above the corner stone, looking south along County Road 600 West.



For details and documentation, refer to related sheet "Section Corner Record."

SECTION CORNER RECORD

NW 400-700

BOONE COUNTY SURVEYOR'S OFFICE

State Plane grid coordinates NAD83 (2011):
 North: 1766772.98 East: 3087848.30 (U.S. survey feet)

Type of monument: Harrison, 4" disk 'Section Corner'
 Depth: One inch below adjacent road surface

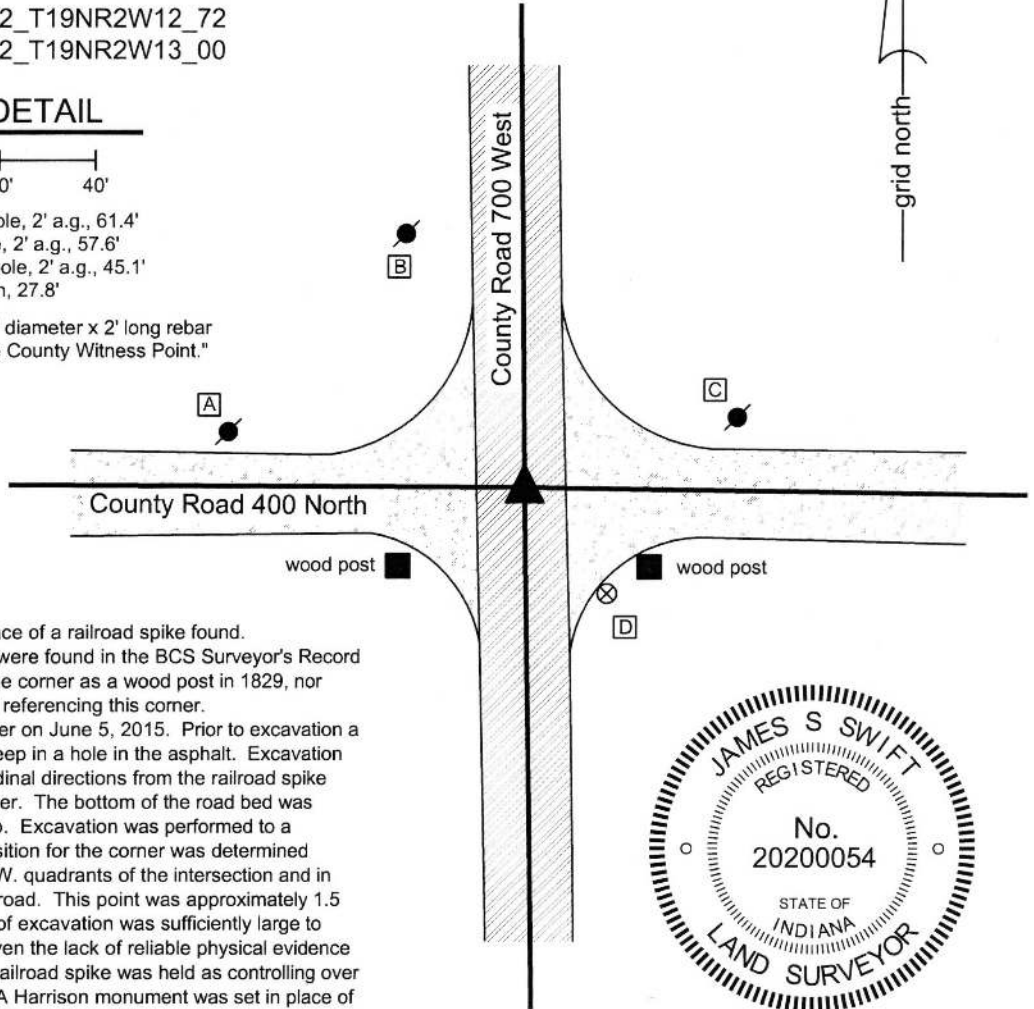
Indiana tie card references:
 IN02_T19NR2W11_80 IN02_T19NR2W12_72
 IN02_T19NR2W14_08 IN02_T19NR2W13_00

CORNER WITNESS DETAIL

SCALE 1" = 40'

- A - Mag nail set in S.E. side power pole, 2' a.g., 61.4'
- B - Mag nail set in E. side power pole, 2' a.g., 57.6'
- C - Mag nail set in S.W. side power pole, 2' a.g., 45.1'
- D - Boone County witness mark, flush, 27.8'

Boone County witness mark is a 3/8" diameter x 2' long rebar bearing a metal cap stamped "Boone County Witness Point."



The Harrison monument was set in place of a railroad spike found. No specific descriptions of this corner were found in the BCS Surveyor's Record beyond the original establishment of the corner as a wood post in 1829, nor were any modern BCS tie cards found referencing this corner. Excavation was performed at this corner on June 5, 2015. Prior to excavation a railroad spike was found at 3 inches deep in a hole in the asphalt. Excavation of an area extending 2.5 feet in all cardinal directions from the railroad spike yielded no further evidence of the corner. The bottom of the road bed was found at approximately 20 inches deep. Excavation was performed to a minimum of 22 inches. A probable position for the corner was determined relative to the posts in the S.E. and S.W. quadrants of the intersection and in relation to the apparent centers of the road. This point was approximately 1.5 feet northwest of the spike. The area of excavation was sufficiently large to encompass this probable position. Given the lack of reliable physical evidence of the corner itself, the position of the railroad spike was held as controlling over the accessory evidence of the posts. A Harrison monument was set in place of the railroad spike, which was removed during excavation. This corner was originally established as a wood post in 1829.



Kenneth E. Hedge
 Kenneth E. Hedge, County Surveyor

James S. Swift
 James S. Swift, IN LS 20200054
 March 28, 2015

Sugar Creek
 Township

Section 11 T19N, R2W	Section 12 T19N, R2W
Section 14 T19N, R2W	Section 13 T19N, R2W

Jefferson
 Township