

SECTION CORNER RECORD

NW 300-000

BOONE COUNTY SURVEYOR'S OFFICE

State Plane grid coordinates NAD83 (2011):

North: 1761445.79 East: 3124832.52 (U.S. survey feet)

North: 1761508.43 East: 3124832.35 (U.S. survey feet)

Type of monument: 5/8 inch rebar with metal cap stamped 'Boone County Surveyor'

Depth: Corner 1: 14 inches deep, Corner 2: 10 inches deep.

Indiana tie card references:

IN02_T19NR1W13_80 IN02_T19NR1E18_72

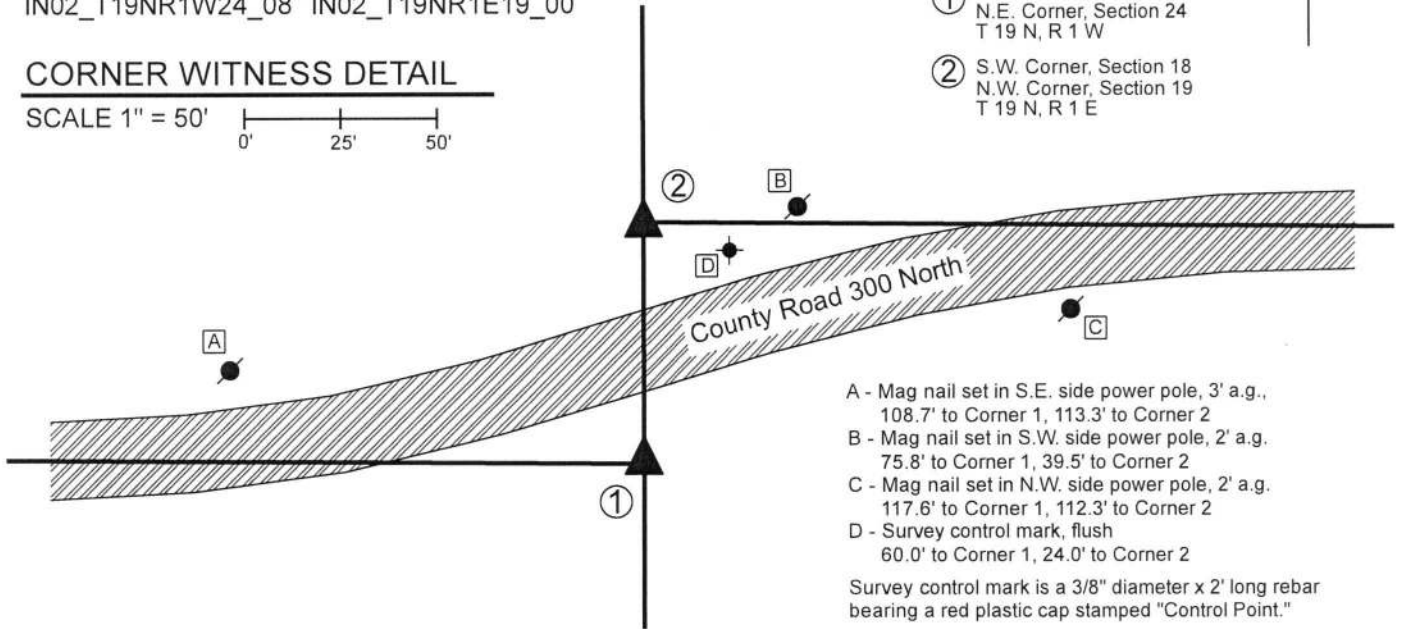
IN02_T19NR1W24_08 IN02_T19NR1E19_00

CORNER WITNESS DETAIL

SCALE 1" = 50'



- ① S.E. Corner, Section 13
N.E. Corner, Section 24
T 19 N, R 1 W
- ② S.W. Corner, Section 18
N.W. Corner, Section 19
T 19 N, R 1 E



- A - Mag nail set in S.E. side power pole, 3' a.g.,
108.7' to Corner 1, 113.3' to Corner 2
- B - Mag nail set in S.W. side power pole, 2' a.g.,
75.8' to Corner 1, 39.5' to Corner 2
- C - Mag nail set in N.W. side power pole, 2' a.g.,
117.6' to Corner 1, 112.3' to Corner 2
- D - Survey control mark, flush
60.0' to Corner 1, 24.0' to Corner 2

Survey control mark is a 3/8" diameter x 2' long rebar bearing a red plastic cap stamped "Control Point."

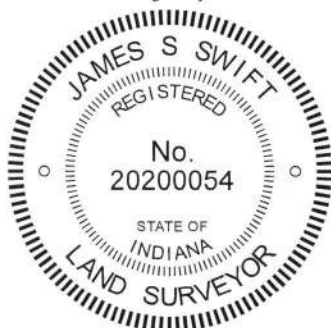
The rebar at Corner 1 was set in place of a vertical section of railroad rail found. The Rebar at Corner 2 was set approximately in place of two vertical sections of 5/8 inch rebar found.

A BCS record dated March 3, 1859 states, with respect to Corner 1, "Reestablished from both original trees. Stake from which Burr Oak, N87W, 14 in. 47 [links]." No specific descriptions of Corner 2 were found in the BCS Surveyor's Record. A tie card dated August 15, 1967 states "no stone" with apparent, though not explicit, reference to Corner 2.

Significant excavation was performed at Corner 1 on November 15, 2013 at which time a vertical section of railroad rail was found at 8 inches deep. Excavation of a large area around the rail revealed no further evidence of the corner and the rail was replaced at that time with a 5/8 inch rebar set at 14 inches deep with a metal cap stamped "Boone County Surveyor." The corner falls in an area of tilled agricultural ground on the south side of County Road 300 North. The depth of the monument was established to avoid disruption of the monument by agricultural equipment.

Minor excavation was performed at Corner 2 on July 10, 2018. At this corner, a section of 5/8 inch rebar was found with a red plastic cap stamped "Witness Point" at 6 inches deep. Excavation revealed another 5/8 inch rebar, with yellow plastic cap stamped "RLS 0083," found at 10 inches deep slightly east of the upper rebar. No further evidence of the corners was found. The position of the rebars fit well with local evidence of the corner in the form of the existing road to the east, fit well with the original federal closing distance with respect to Corner 1 and agree with previous surveys in the area. The rebars were accepted as providing the best available evidence of the general position of the corner. The final position of Corner 2 was established on the range line as defined by the rebar at Corner 1 and the Harrison monument at the standard corner 1/2 mile north (See Corner NW-350-000). The north-south position of the upper rebar was held and a BCS rebar was set on the Range line 0.1 foot west of the position of the rebar with red cap stamped 'Witness Point' and 0.1 feet south and 0.4 feet west of the position of rebar with yellow cap stamped 'RLS 0083.' Both previous rebars were removed during excavation. It is noted that Corner 2 falls on the south edge of tillable ground along the north side of County Road 300 South. The rebar was set at 10 inches deep to avoid disruption by agricultural equipment.

Corner 1 was originally established as a wood post in 1819. Corner 2 was originally established as a wood post in 1822.



Kenneth E. Hedge
Kenneth E. Hedge, County Surveyor

James S. Swift
James S. Swift, IN LS 20200054
July 18, 2018

Center Township

Section 13 T19N, R1W	Section 18 T19N, R1E
Section 24 T19N, R1W	Section 19 T19N, R1E

SECTION CORNER RECORD

NW 350-000

BOONE COUNTY SURVEYOR'S OFFICE

State Plane grid coordinates NAD83 (2011) (U.S. survey feet):

Corner 1: North: 1764083.33 East: 3124825.46

Corner 2: North: 1764127.27 East: 3124825.15

Type of monument: Corner 1: Harrison, 4" disk 'Section Corner'

Type of monument: Corner 2: Railroad Rail (see notes)

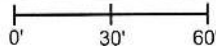
Depth: Three inches above grade (Cor. 1), Flush (Cor. 2)

Indiana tie card references:

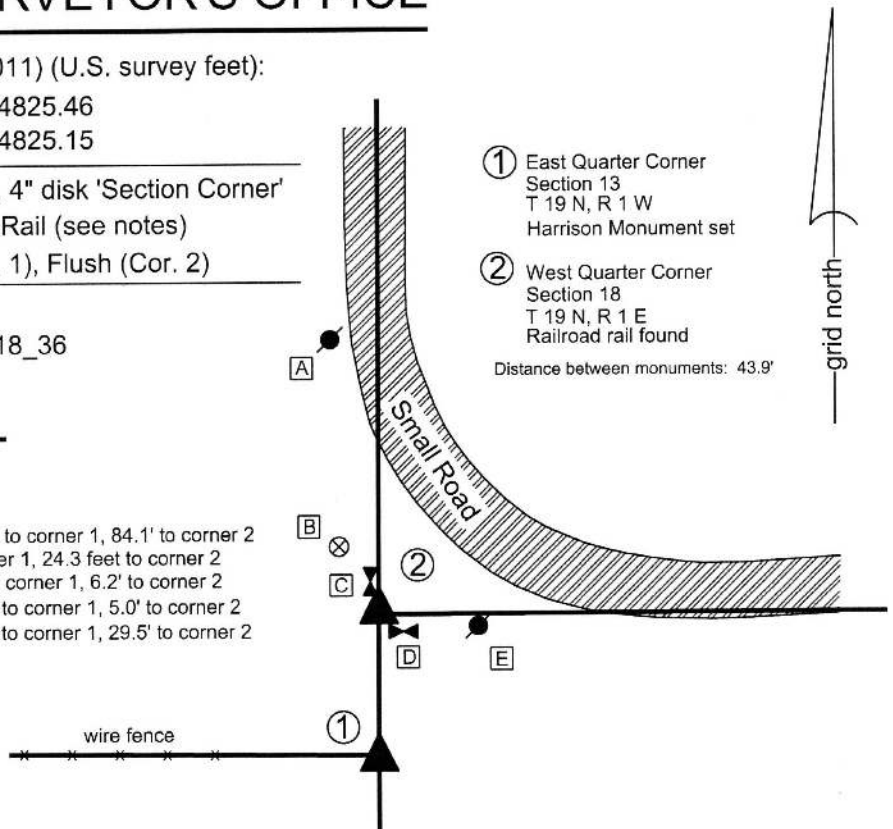
IN02_T19NR1W13_44 IN02_T19NRE18_36

CORNER WITNESS DETAIL

SCALE 1" = 60'



- A - Mag nail set in S. side power pole, 2' a.g., 127.6 to corner 1, 84.1' to corner 2
- B - Boone County witness mark, flush, 66.3' to corner 1, 24.3 feet to corner 2
- C - S. edge, S. post, road sign - Arrow east, 49.9' to corner 1, 6.2' to corner 2
- D - W. edge, W. post, road sign - Arrow north, 40.4' to corner 1, 5.0' to corner 2
- E - Mag nail set in W. side power pole, 2' a.g., 49.9' to corner 1, 29.5' to corner 2



The Harrison monument at Corner 1 was set over the broken-off remnants of a previous Harrison monument. The vertical section of railroad rail commonly accepted as marking Corner 2 was found in place.

Corner 1 was originally established as a wood post in 1819. Corner 2 was not set as part of the original federal survey and is not an original corner of the PLSS. The BCS records for section 13, T19N, R1W do not specifically address these corners. The BCS records for section 18, T19N, R1E do address Corner 2, showing it as referenced to bearing trees in a record of June 22, 1847 and stating, in a record of October 16, 1912, "Set rock 15x8x8 marked + with a rock under it 10.7.6 marked L." A BCS tie card dated October 14, 1971 states, with respect to Corner 2, "No Stone. RRR put in." This record does not specifically address Corner 1. The found vertical section of railroad rail is believed to be the same monument as called 'RRR put in.' A BCS record of September 30, 2005 shows both corners, calling Corner 1 as a Harrison monument and Corner 2 as a railroad rail.

Analysis of the relative positions of the monuments with respect to the relative distances between them, with respect to the relative distances to proximate corners, and with respect to the existing evidence of possession in the form of fences (being a standing fence bearing west from corner 1 and a standing fence which bears west from a post marking the apparent southeast corner of the southwest quarter of the northwest quarter of section 18 for a distance of approximately 1040 feet) indicates that the broken-off Harrison monument found at Corner 1 is in a reasonable position but that the rail marking Corner 2 is further south than might be expected.

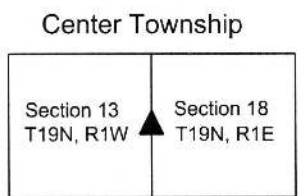
On October 4, 2017, the broken-off Harrison monument at Corner 2 was uncovered and a new Harrison monument was set directly over the remnants of the broken Harrison. Evidence of disturbance of the existing ground was visible in the immediate vicinity of Corner 1. The old end post for the east-west fence was no longer present and a stone which may have once marked the corner was found lying in a haphazard orientation nearby, evidently moved from its original position. On December 19, 2017 excavation with mechanical equipment was performed in the vicinity of Corner 2, specifically at the point where the prolongation of a line defined by the aforementioned standing fence to the east intersects the Second Principal Meridian, as defined by Corner 1 and monuments to the north. Neither the stones mentioned in the 1912 record, nor any other evidence of the corner was found at this position or within 3 feet in all directions.

Although the railroad rail appears to be further south than the relative distances and ancient evidence would indicate, the rail has been held as marking the corner since it was set in 1971. The descriptions for the properties along the east side of Short Road as it bears north-south, approximately 320 feet east of the meridian line, hold the rail as the reference corner to which the descriptions are tied. See, for example, Deed Record 251, page 835. A recent minor plat for the land adjoining these corners to the south also holds the corners as monumented. See Plat Book 24, page 54. The rail is held as marking Corner 2 and the set Harrison monument is held as marking Corner 1. Minimal uncertainty is associated with the position of Corner 1. Uncertainties of up to 12 feet north-south are associated with the position of Corner 2.



Kenneth E. Hedge
Kenneth E. Hedge, County Surveyor

James S. Swift
James S. Swift, IN LS 20200054
January 17, 2018



SECTION CORNER RECORD

NW 350-100

BOONE COUNTY SURVEYOR'S OFFICE

State Plane grid coordinates NAD83 (2011):

North: 1764130.54 East: 3119474.77 (U.S. survey feet)

Type of monument: Harrison, 4" disk 'Section Corner'

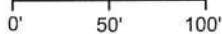
Depth: Two inches above adjacent ground

Indiana tie card references:

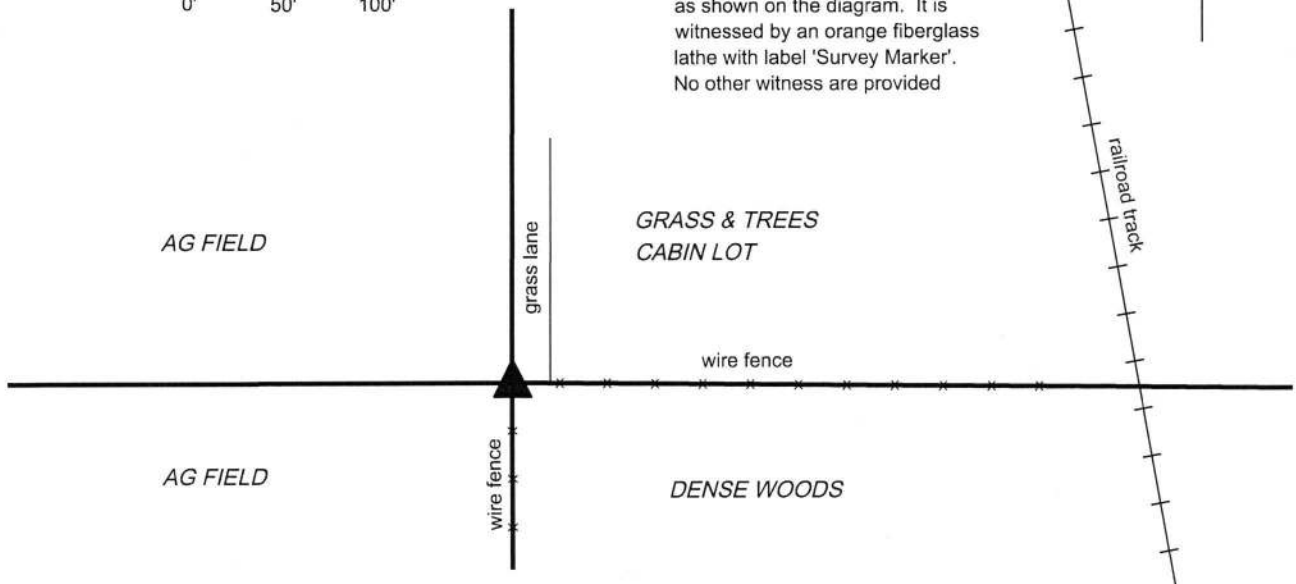
IN02_T19NR1W13_36 IN02_T19NR1W14_44

CORNER WITNESS DETAIL

SCALE 1" = 100'



The Harrison monument is at the northwest corner of a wooded lot, as shown on the diagram. It is witnessed by an orange fiberglass lathe with label 'Survey Marker'. No other witness are provided



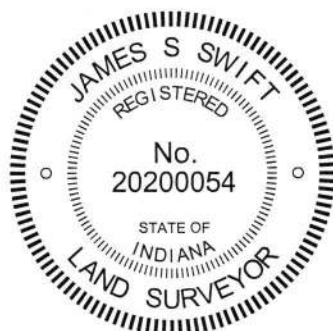
The Harrison monument was set in place of a stone found.

A BCS record of November 21-22, 1872 states, with respect to this corner, "Reest'b from stumps of trees. Set Rock 16x14x8 +."

No recent BCS tie cards were found referencing this corner.

Excavation was performed at this corner on November 21, 2017. Prior to excavation, a round metal post at the intersection of fences to the south and east was found leaning substantially towards the southeast. Excavation around the post revealed several rocks, including the stone described in the 1872 record. The record stone was found at 14 inches below grade at the west edge of the metal post. The stone, as found, was 16 inches tall by 14 inches N-S by 8 inches E-W. A clearly visible + mark was found near the top of the stone. The stone was approximately one foot west of the base of the metal post. The stone was removed during excavation, along with the metal post and the other rocks found in the vicinity. A Harrison monument was set in the position of the stone.

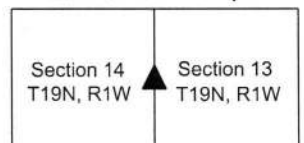
This corner was originally established as a wood post in 1822.



Kenneth E. Hedge
Kenneth E. Hedge, County Surveyor

James S. Swift
James S. Swift, IN LS 20200054
December 13, 2017

Center Township



SECTION CORNER RECORD

NW 400-000

BOONE COUNTY SURVEYOR'S OFFICE

State Plane grid coordinates NAD83 (2011):

Corner 1: North: 1766724.12 East: 3124826.08 (U.S. survey feet)

Corner 2: North: 1766794.02 East: 3124826.04 (U.S. survey feet)

Both Corners: Harrison, 4" disk 'Section Corner', flush

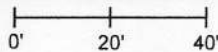
Indiana tie card references:

IN02_T19NR1E07_72 IN02_T19NR1W12_80

IN02_T19NR1W13_08 IN02_T19NR1E18_00

CORNER WITNESS DETAIL

SCALE 1" = 40'



The Harrison monument at Corner 2 was set in place of a disturbed monument found. The Harrison monument at Corner 1 was set in the position of a previous monument, per information shown on a BCS tie sheet dated September 30, 2005.

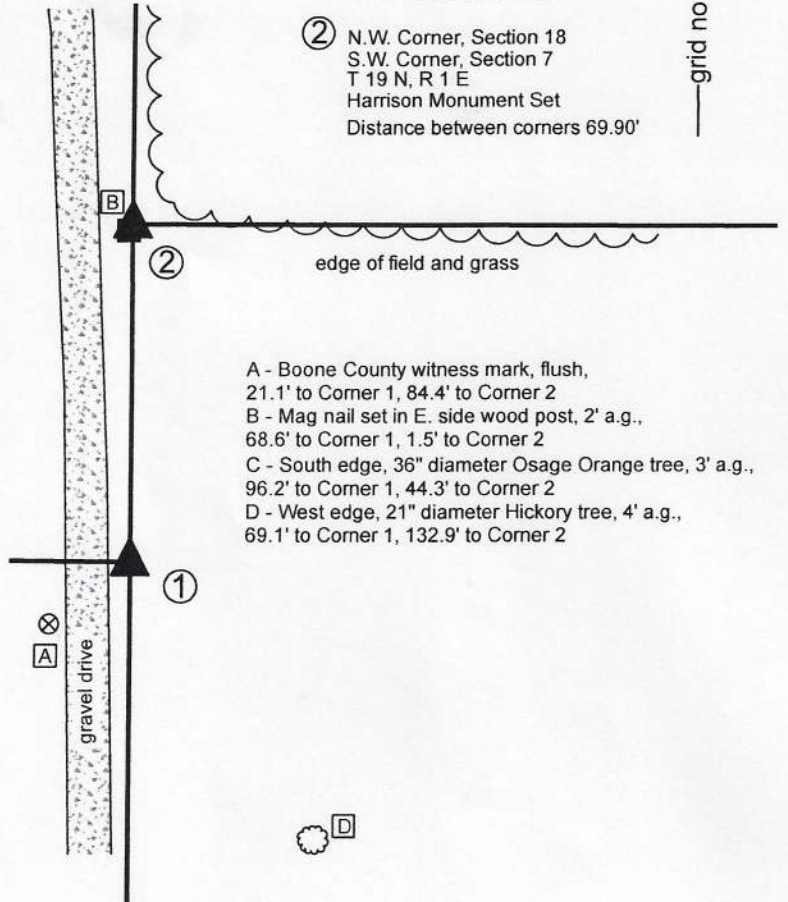
Both of these corners are original federal corners. Corner 1 was set in 1819 and Corner 2 was set in 1822. No specific descriptions of the corners were found in the BCS Surveyor's Record beyond the original establishments of the corners as wood posts in 1819 and 1822, respectively. Both corners are shown on a BCS tie card dated September 30, 2005 which shows them as Harrison monuments with no documentation of source.

Corner 2 is situated slightly east of a wood post, generally in-line with evidence of the north line of the northwest quarter of the northwest quarter of Section 18, in the form of a wood corner post, rebar at the base of a wood corner post, and east-west field division. The Harrison monument found at Corner 2 was disturbed, leaning substantially to the southwest, as found. No monument was found at Corner 1. Ron Neese, owner of the surrounding land confirms that the monument was removed several years ago during installation of a drainage tile.

The record federal closing distance for these corners is 93 links, or 61.4 feet. The corners as established per the 2005 tie card are separated by 69.90 feet. Existing fences and rebars found providing evidence of the north line of the northeast quarter of section 13 fall generally along the line, or slightly south thereof, connecting Corner 1 as established per the 2005 tie card and the north quarter corner of Section 13 (see BCS Corner NW 400-050). The furthest east of this evidence was found at approximately 600 feet west of Corner 1. It was observed that the 2005 position for Corner 1 represents the northerly most position expected with respect to the physical evidence to the west and that some evidence indicates that the corner could be several feet further south. Hence it is observed that although the two corners are substantially further apart than the record federal closing distance, both corners work with respective evidence to the west (Corner 1) and east (Corner 2) and that no physical evidence was found to indicate that the corners should be separated by less distance than is shown on the 2005 tie card. Manual excavation around the monument and post at Corner 2 revealed various rubble and small rocks but no stones or other monuments which appeared to represent evidence of the corner. Exploratory excavation was not performed at Corner 1, given the known fact that the vicinity of this corner was substantially disturbed during the recent tile installation.

Corner 2 was established per reference ties shown on the 2005 tie card, which fit with the found, though disturbed, monument. Corner 1 was established at the southerly prolongation of a line prolonged from the east quarter corner of Section 12 (see BCS Corner NW 450-000) through Corner 2 at 69.90 feet, per the 2005 tie card. Harrison monuments were set in concrete at both corners on October 8, 2020.

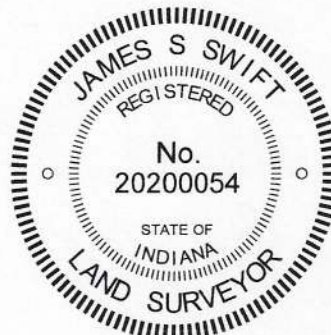
- ① S.E. Corner, Section 12
N.E. Corner, Section 13
T 19 N, R 1 W
Harrison Monument Set
- ② N.W. Corner, Section 18
S.W. Corner, Section 7
T 19 N, R 1 E
Harrison Monument Set
Distance between corners 69.90'



- A - Boone County witness mark, flush, 21.1' to Corner 1, 84.4' to Corner 2
- B - Mag nail set in E. side wood post, 2' a.g., 68.6' to Corner 1, 1.5' to Corner 2
- C - South edge, 36" diameter Osage Orange tree, 3' a.g., 96.2' to Corner 1, 44.3' to Corner 2
- D - West edge, 21" diameter Hickory tree, 4' a.g., 69.1' to Corner 1, 132.9' to Corner 2

Kenneth E. Hedge
Kenneth E. Hedge, County Surveyor

James S. Swift
James S. Swift, IN LS 20200054
October 13, 2020



Washington Township Clinton Township

Section 12 T19N, R1W	Section 7 T19N, R1E
Section 13 T19N, R1W	Section 18 T19N, R1E

Center Township

SECTION CORNER RECORD

NW 400-050

BOONE COUNTY SURVEYOR'S OFFICE

State Plane grid coordinates NAD83 (2011):

CORNER: North: 1766749.82 East: 3122149.74 (U.S. survey feet)

WITNESS: North: 1766750.32 East: 3122149.74 (U.S. survey feet)

Type of monument at corner: Wood corner post

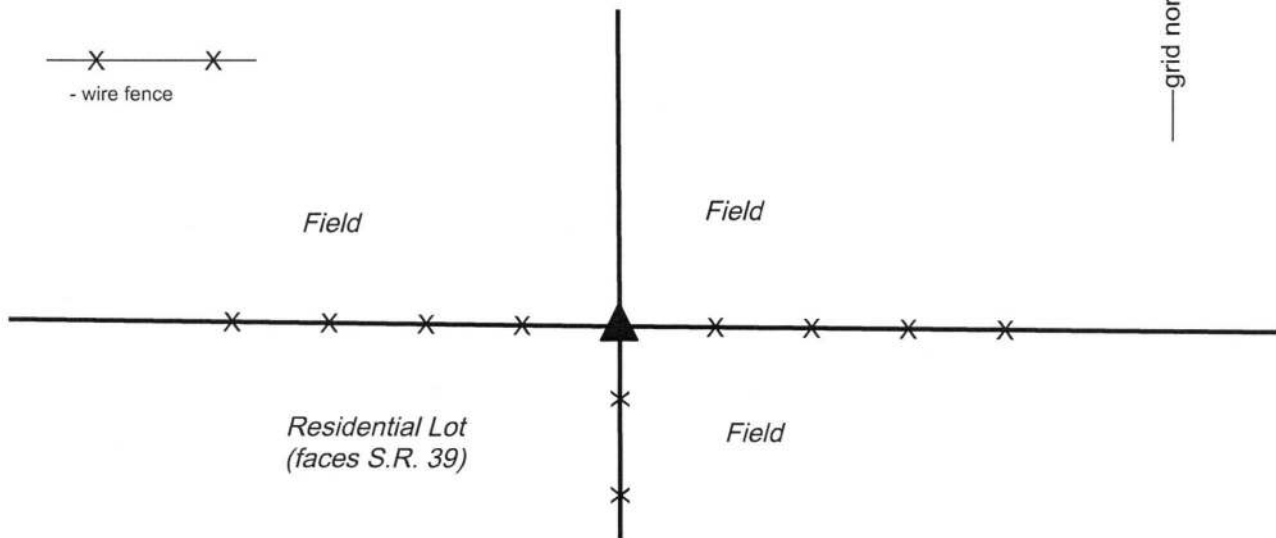
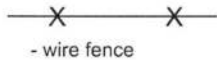
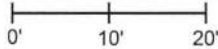
Witness monument: 5/8 inch rebar with metal cap 'Boone County Surveyor'

Indiana tie card references:

IN02_T19NR1W12_76 IN02_T19NR1W13_04

CORNER WITNESS DETAIL

SCALE 1" = 20'

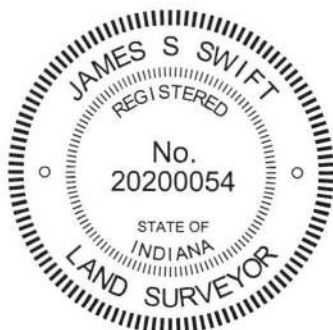


The wood post was found in place.

An undated note attributed to Carl Anderson found in the BCS records states this corner as "Stone Found." However, neither tie card nor field notes were found associated with this note, nor were any survey references found to support this corner as a stone found. Carl Anderson served as Boone County Surveyor from 1960 to 1972. Unlike more ancient surveys, corners referenced by Anderson are supported by field notes and tie cards, none of which were found for this corner.

The wood post represents the corner to standing fences to the south, east and west. Many rocks were found around the base of the post, none of which could be positively identified as marking the corner. Recent surveys, including those recorded in the Office of the Boone County Recorder in Survey Book 7, page 56 and Document 0214114, hold the post as the corner. The post is 7 inches by 7 inches, old and leaning slightly to the south. The post was accepted as the best available evidence of the corner. The post is situated at the northeast corner of a residential lot and the fencing to the south and west is in good condition, evidently used to enclose that portion of the residential lot. The post was left in place, as found. A 5/8 inch rebar with metal cap stamped "Boone County Surveyor" was set at the north edge of the post. The rebar is intended as a witness to the post, which is held as marking the actual corner. The rebar is 0.5 foot north of the center of the post.

This corner was originally established as a wood post in 1822.



Kenneth E. Hedge, County Surveyor

James S. Swift, IN LS 20200054
April 11, 2018

Washington
Township

Section 12
T19N, R1W

Center
Township

Section 13
T19N, R1W

SECTION CORNER RECORD

NW 400-100

BOONE COUNTY SURVEYOR'S OFFICE

State Plane grid coordinates NAD83 (2011):

North: 1766779.30 East: 3119479.23 (U.S. survey feet)

Type of monument: Harrison, 4" disk 'Section Corner'

Depth: Two inches above adjacent ground

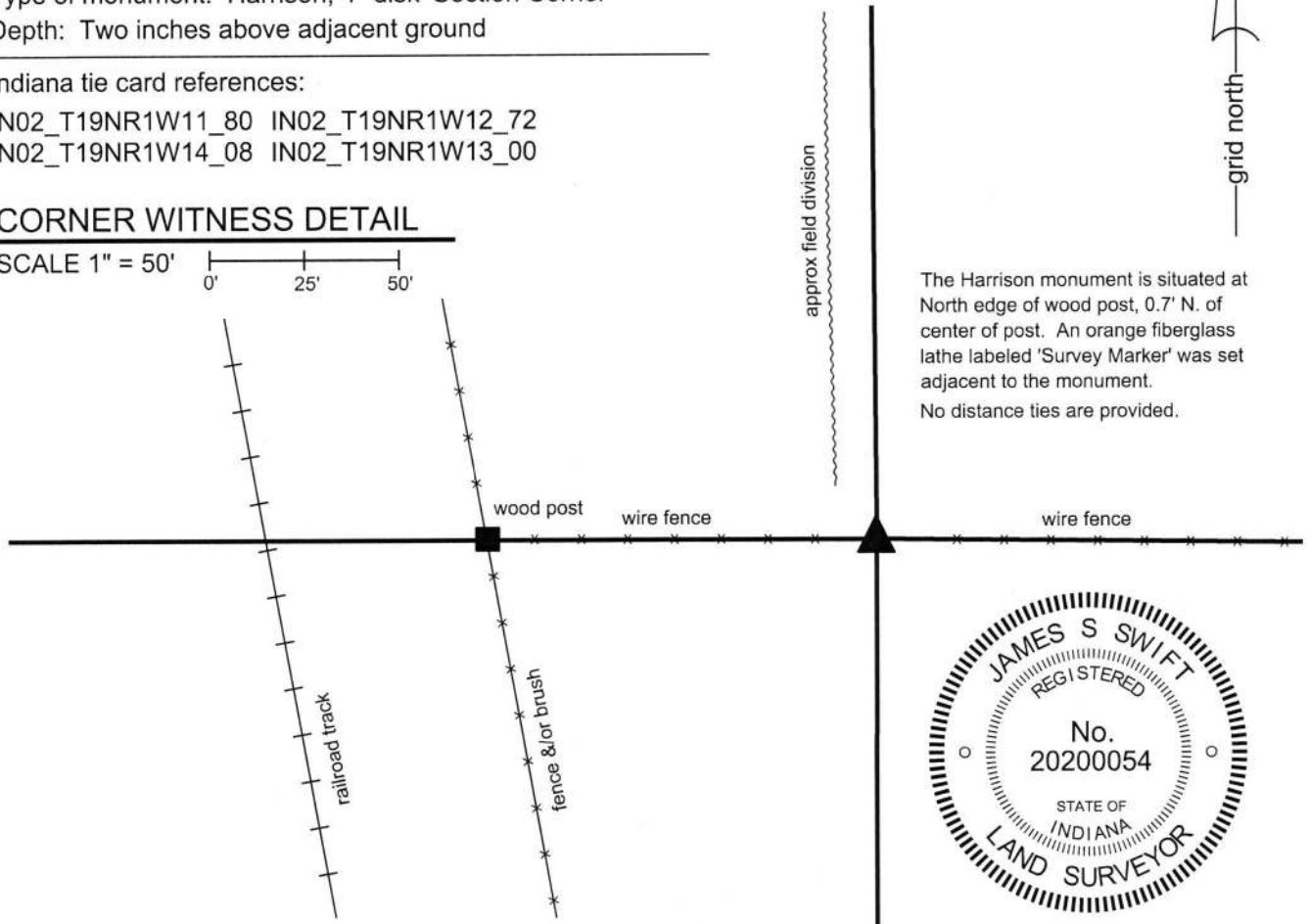
Indiana tie card references:

IN02_T19NR1W11_80 IN02_T19NR1W12_72

IN02_T19NR1W14_08 IN02_T19NR1W13_00

CORNER WITNESS DETAIL

SCALE 1" = 50'



The Harrison monument is situated at North edge of wood post, 0.7' N. of center of post. An orange fiberglass lathe labeled 'Survey Marker' was set adjacent to the monument.

No distance ties are provided.



The Harrison monument was set in place of a stone found.

No specific descriptions of this corner were found in the Boone County Surveyor's Record beyond the original establishment of the corner as a wood post in 1822. The corner is mentioned as the terminal point for measurements in records of 1834, 1836, 1850, and 1857, indicating that a monument of some form was present from which to measure at those times. No recent BCS tie cards were found referencing this corner. A recent survey by Ronald Wharry recorded as Instrument 201600012315 shows the corner as a wood post.

This corner was excavated on November 28-29, 2017. The wood post referenced on the Wharry survey was found in an east-west fence. The post had braces on the east and west sides of the post. The position of the post fits with the relative positions of proximate corners and fits with calls for the adjacent railroad right-of-way in the deed descriptions for neighboring properties to the west and southwest. The post appeared to be old but not ancient. Excavation around the post revealed numerous small rocks and two larger rocks. One rock along the northeast edge of the post was found to be situated in a haphazard orientation, not quite horizontal and oriented off cardinal directions. Another rock found at 6 inches deep along the north edge of the post bore the characteristics of corner stones found marking other corners throughout the county, being clearly vertical and oriented in cardinal directions. The stone was 11 inches tall, 7 inches east-west by 6 inches north-south with a distinct high point. The south side of the stone was flat and vertical. The stone could be interpreted as acting as a brace to the post but other brace rocks were not found around the post and the stone was not actually touching the post, being slightly north of the north edge of the post. The stone appeared in the field to be intended to mark the position of the corner and was held as such. The stone was removed and replaced with a Harrison monument in the same position. The monument is situated at the north edge of the post, 0.7 foot north of the center of the post.

Kenneth E. Hedge

 Kenneth E. Hedge, County Surveyor

James S. Swift

 James S. Swift, IN LS 20200054

December 13, 2017

Washington Twp

Center Twp

Section 11 T19N, R1W	Section 12 T19N, R1W
Section 14 T19N, R1W	Section 13 T19N, R1W