

SECTION CORNER RECORD

SE 200-1100

BOONE COUNTY SURVEYOR'S OFFICE

State Plane grid coordinates NAD83 (NSRS 2007):
North: 1736486.01 East: 3183360.60 (U.S. survey feet)

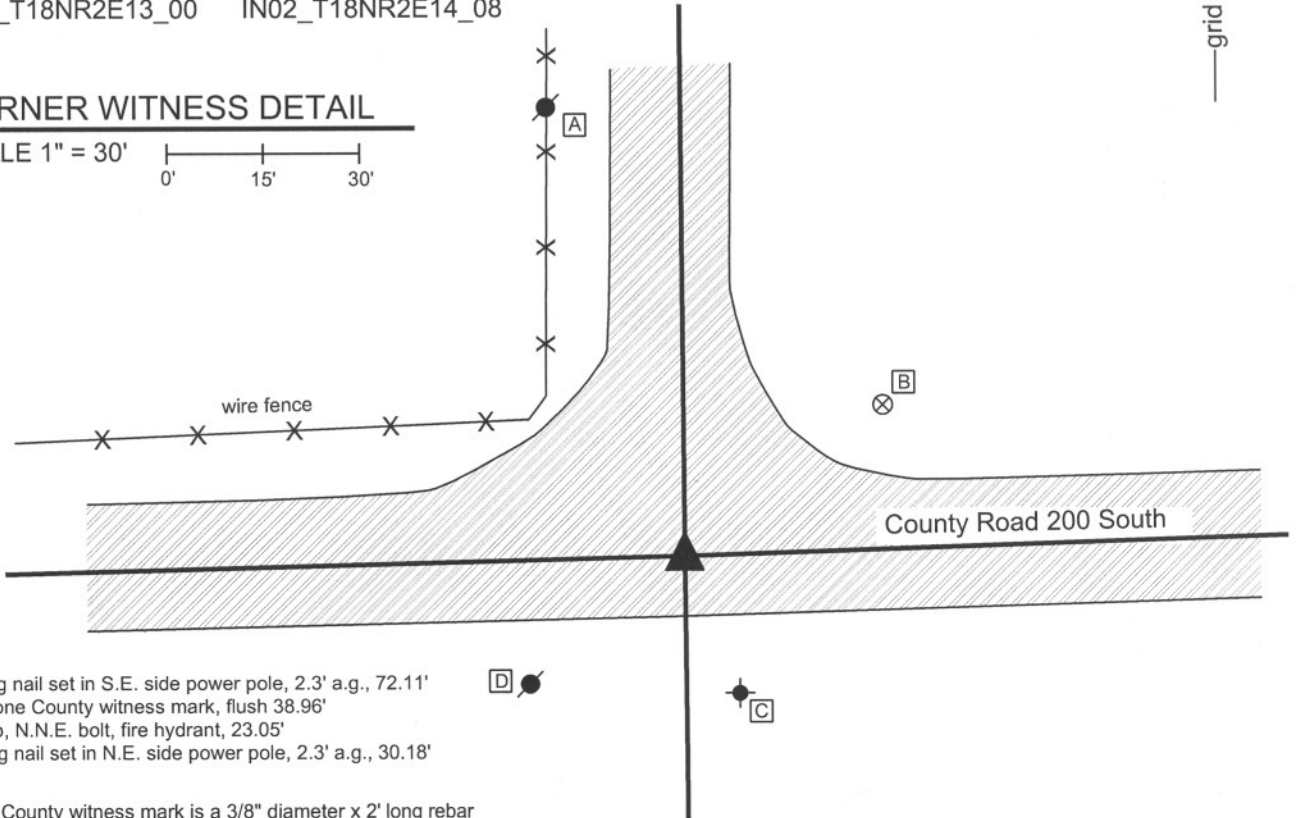
Type of monument: Harrison, 4" disk 'Section Corner'
Depth: One inch below adjacent road surface

Indiana tie card references:
IN02_T18NR2E11_80 IN02_T18NR2E12_72
IN02_T18NR2E13_00 IN02_T18NR2E14_08



CORNER WITNESS DETAIL

SCALE 1" = 30'
0' 15' 30'



- A - Mag nail set in S.E. side power pole, 2.3' a.g., 72.11'
- B - Boone County witness mark, flush 38.96'
- C - Top, N.N.E. bolt, fire hydrant, 23.05'
- D - Mag nail set in N.E. side power pole, 2.3' a.g., 30.18'

Boone County witness mark is a 3/8" diameter x 2' long rebar bearing a metal cap stamped "Boone County Witness Point."

The harrison monument was set in place of a railroad rail found.
 A BCS record of January 20, 1874 states "Re-established after sighting the lines intersecting here. Set a rock 17.13.10 +." A BCS tie card dated July 31, 1967 states "found stone." A BCS tie card dated May 31, 1991 shows the corner as being a 3/4 inch tie rod found.
 This corner was excavated on May 30, 2008. Prior to excavation a railroad rail was visible approximately 4 inches deep in a hole in the asphalt. Excavation centered on the railroad rail yielded an iron pipe (presumably the 3/4 inch tie rod called for the 1991 tie card) situated against the rail on the east side. Further excavation yielded no monuments. Though no specific documentation was found indicating the source of the rail, It is reasonable to conclude that the stone was removed and the rail installed in 1967, as was a common practice at that time. The harrison monument was set in the place of the now removed railroad rail.
 This corner was originally established as a wood post in July, 1821.



Kenneth E. Hedge
Kenneth E. Hedge, County Surveyor

James S. Swift
James S. Swift, IN LS 20200054

March 11, 2009

Union Township

Section 11 T18N, R2E	Section 12 T18N, R2E
Section 14 T18N, R2E	Section 13 T18N, R2E

SECTION CORNER RECORD

BOONE COUNTY SURVEYOR'S OFFICE

SE 200-1150

State Plane grid coordinates NAD83 (NSRS 2007):

North: 1736568.87 East: 3186014.77 (U.S. survey feet)

Type of monument: Harrison, 4" disk 'Section Corner'

Depth: One inch below adjacent road surface

Indiana tie card references:

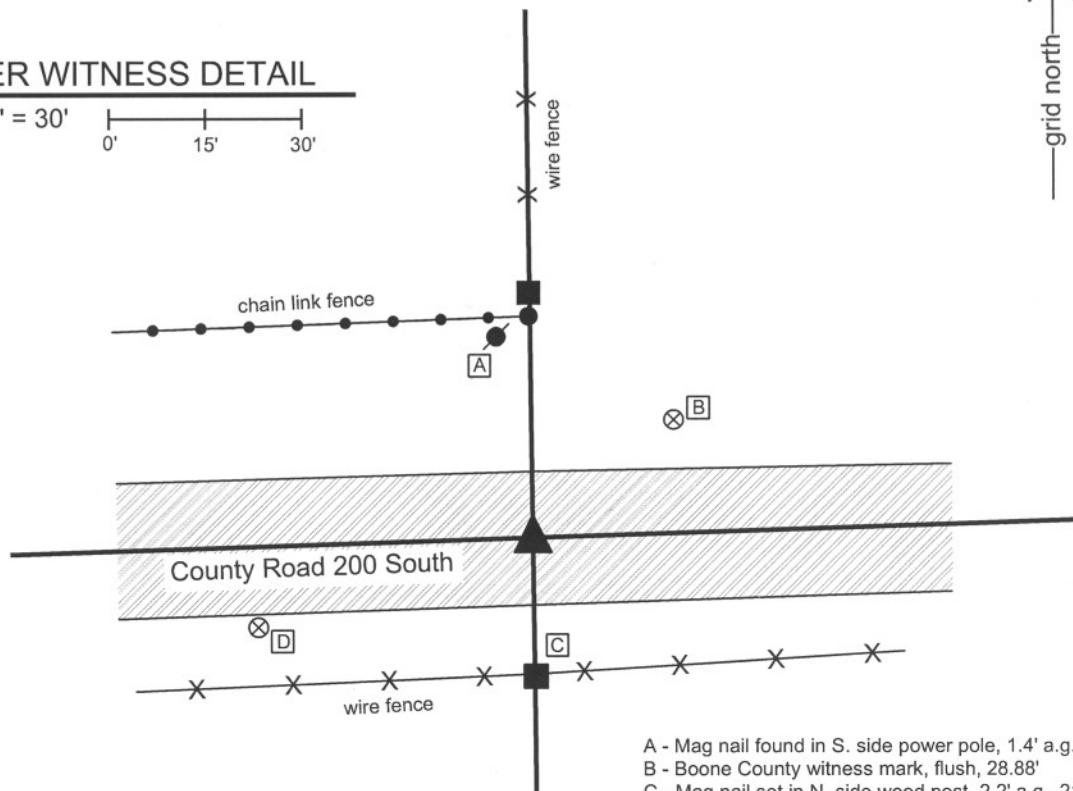
IN02_T18NR2E12_76

IN02_T18NR2E13_04



CORNER WITNESS DETAIL

SCALE 1" = 30'

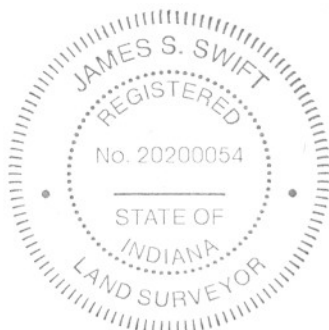


- A - Mag nail found in S. side power pole, 1.4' a.g., 30.56'
- B - Boone County witness mark, flush, 28.88'
- C - Mag nail set in N. side wood post, 2.2' a.g., 21.28'
- D - Boone County witness mark, flush, 45.24'

Boone County witness mark is a 3/8" diameter x 2' long rebar bearing a metal cap stamped "Boone County Witness Point."

The Harrison monument was set in place of a railroad spike found.

No old BCS stone records were found for this corner. A BCS tie card dated June 5, 1991 calls the corner a railroad spike. This corner was excavated on June 2, 2008. Prior to excavation, the railroad spike was visible 2 inches below grade in a hole in the asphalt. This spike fits with the remaining 1991 ties and is located in the center of the county road in line with the old fence to the north. Excavation of an area 4 feet N-S by four feet E-W centered on the spike yielded no more monumentation. No stone was found. The Harrison monument was set in place of the now removed railroad spike. This corner was originally established as a wood post in July, 1821.

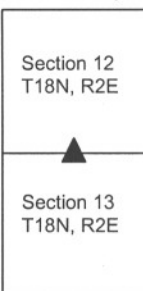


Kenneth E. Hedge
 Kenneth E. Hedge, County Surveyor

James S. Swift
 James S. Swift, IN LS 20200054

March 11, 2009

Union Township



SECTION CORNER RECORD

SE 200-1200

BOONE COUNTY SURVEYOR'S OFFICE

State Plane grid coordinates NAD83 (2011):
 North: 1736651.11 East: 3188671.38 (U.S. survey feet)

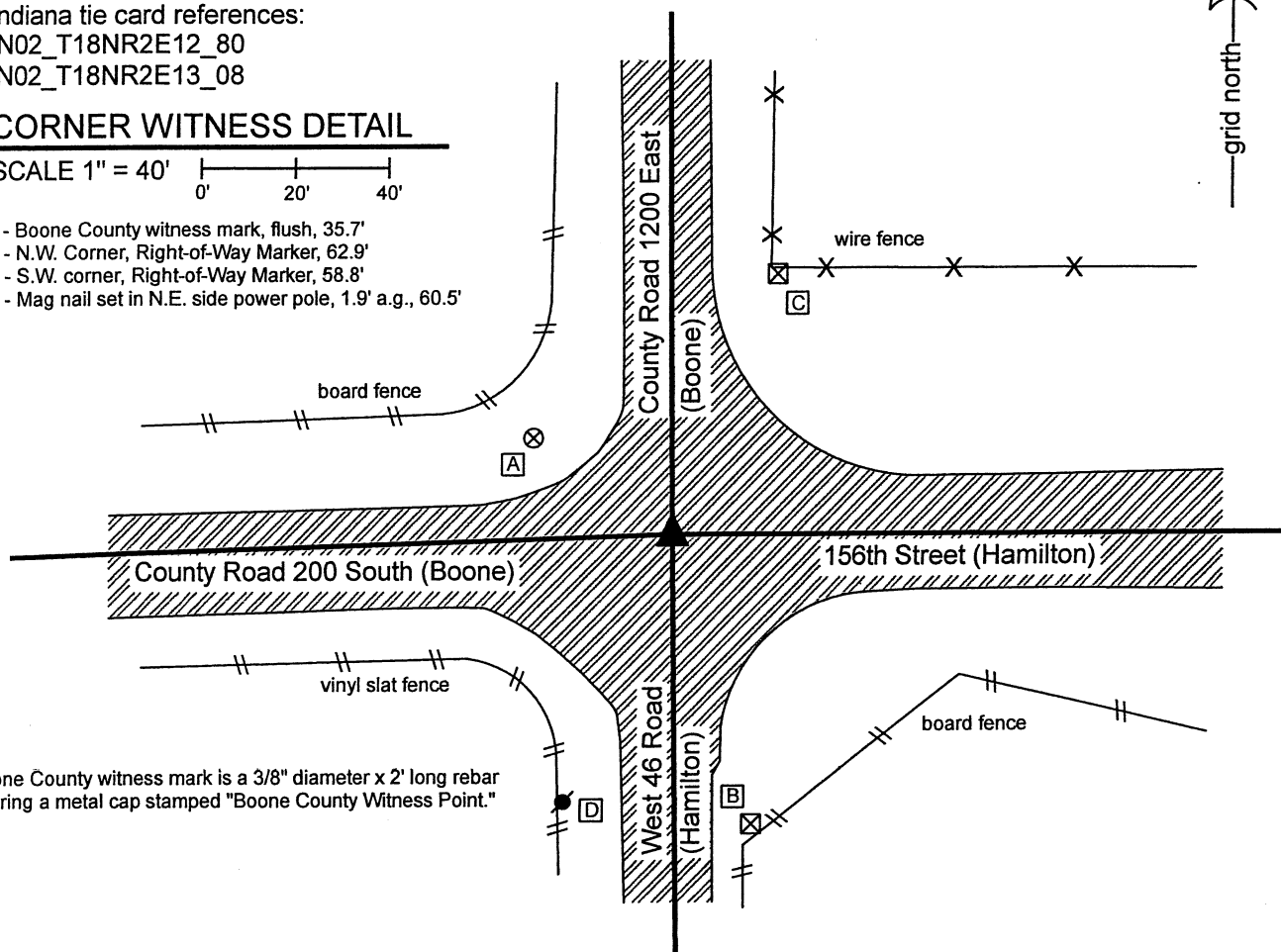
Type of monument: Harrison, 4" disk 'Section Corner'
 Depth: Flush with road surface

Indiana tie card references:
 IN02_T18NR2E12_80
 IN02_T18NR2E13_08

CORNER WITNESS DETAIL

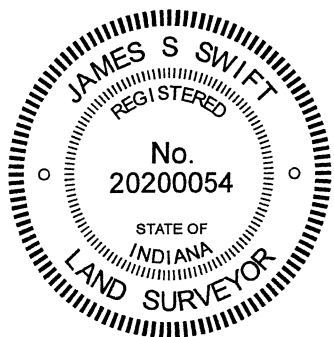
SCALE 1" = 40'

- A - Boone County witness mark, flush, 35.7'
- B - N.W. Corner, Right-of-Way Marker, 62.9'
- C - S.W. corner, Right-of-Way Marker, 58.8'
- D - Mag nail set in N.E. side power pole, 1.9' a.g., 60.5'



Boone County witness mark is a 3/8" diameter x 2' long rebar bearing a metal cap stamped "Boone County Witness Point."

The Harrison monument was found in place in the position of a Harrison monument set by this office in 2006, and held as marking the corner. A BCS record dated August 17, 1869 states, with respect to this corner, "Found from stump of Oak and Reestablished. Drove stake under a rock 16.13.6 +." A tie card of unknown origin dated September 20, 1965 states "No Stone. Found I.P set." Excavation by contractors working for the Boone County Surveyor's Office in 2006 did not reveal the stone called in the 1869 record but did reveal an iron pipe, which was believed to be the monument called in the 1965 record. A Harrison monument was set at that time over the iron pipe. The current Hamilton County tie card for this corner, November 4, 2020, shows corner as a Harrison monument with references to an iron pin in 1965, a railroad spike found in 1991 and a Harrison monument found in 2009. The 2006 excavation was accepted as sufficient and no further excavation was performed at this corner. The Harrison monument is held as set in 2006. This corner was originally established as a wood post in 1820. Although this corner is on a range line, there is no offset. The Boone and Hamilton County corners represent a common corner for the four adjacent sections.



Kenneth E. Hedge
 Kenneth E. Hedge, County Surveyor

James S. Swift
 James S. Swift, IN LS 20200054
 February 17, 2020

Union Township
 Boone County

Boone County	Hamilton County
Section 12 T18N, R2E	Section 7 T18N, R3E
Section 13 T18N, R2E	Section 18 T18N, R3E

SECTION CORNER RECORD

SE 250-1100

BOONE COUNTY SURVEYOR'S OFFICE

State Plane grid coordinates NAD83 (2011):

North: 1733847.49 East: 3183384.58 (U.S. survey feet)

Type of monument: 5/8 inch rebar with metal cap "Boone County Surveyor

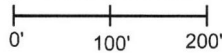
Depth: Four inches above adjacent ground surface

Indiana tie card references:

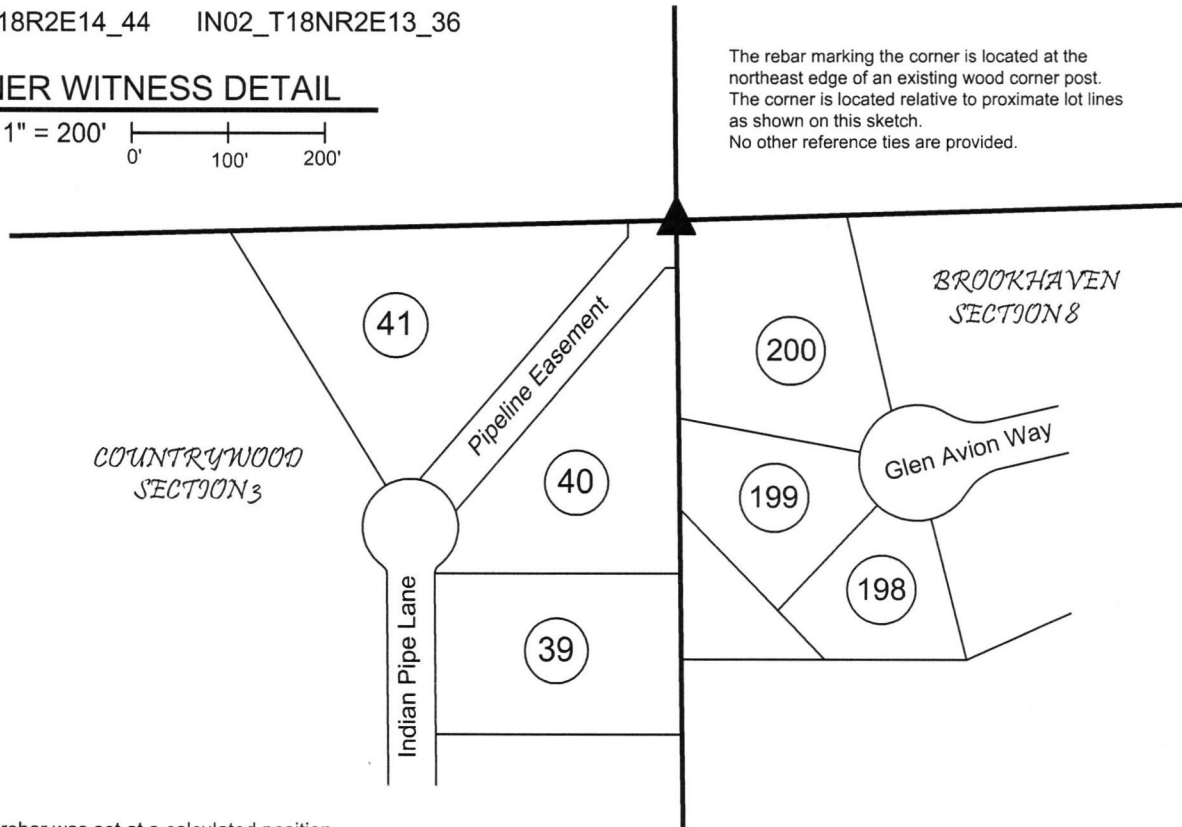
IN02_T18R2E14_44 IN02_T18NR2E13_36

CORNER WITNESS DETAIL

SCALE 1" = 200'



The rebar marking the corner is located at the northeast edge of an existing wood corner post. The corner is located relative to proximate lot lines as shown on this sketch. No other reference ties are provided.

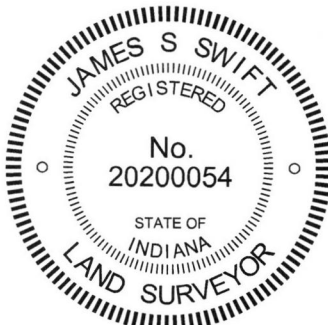


The capped rebar was set at a calculated position.

A BCS record of January 20, 1874 states, with respect to this corner, "Reestablished from stump of Beech and find an old. Set Rock 20.20.10+." (Note, the record is not clear as to exactly what "old" was found.)

No recent BCS tie cards were found referencing this corner.

Several stones and a wood post were found in the vicinity of this corner. None of the stones matched the record description from 1874 nor did any of the found stones bear the characteristics associated with purposely set cornerstones. The presence of a pipeline, as evidenced by the pipeline easement in the Countrywood Addition as well as "pipeline" markers, is accepted as evidence that the immediate vicinity of the corner was likely disturbed in the past. Hence, ancient, undisturbed evidence is not likely to be found at the corner. Several recorded surveys, including a survey by American Structurepoint, Inc. recorded in Survey Book 9, pages 24-25 in the Boone County Recorder's Office show the corner as a stone found. However, an earlier survey by The Schneider Corporation, recorded in Survey Book 7, page 9, computes the corner with respect to the existing monumentation and plat dimensions of the adjoining Countrywood Addition. The Schneider survey is referenced as the basis for the subsequent plats of the adjoining Brookhaven Additions. Given that the stones found around the post are not accepted as marking the corner, that ancient evidence is likely obliterated, and that the adjoining subdivisions are referenced to a common corner, the position of the corner which fits with the Countrywood and Brookhaven plats was held. The position of the corner was computed from the aforementioned Schneider survey (SB 7, p.9) and monuments found marking lot corners in Brookhaven Section 7 (Plat Book 22, pages 88-91). This point falls near the northeast edge of the existing wood post. On September 9, 2016 a thirty inch length of 5/8 inch rebar was set at this corner.



Kenneth E. Hedge
 Kenneth E. Hedge, County Surveyor

James S. Swift
 James S. Swift, IN LS 20200054
 March 23, 2017

Union Township

Section 14 T18N, R2E	▲	Section 13 T18N, R2E
-------------------------	---	-------------------------

SECTION CORNER RECORD

SE 250-1200

BOONE COUNTY SURVEYOR'S OFFICE

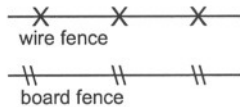
State Plane grid coordinates NAD83 (NSRS 2007):
 North: 1734014.74 East: 3188695.61 (U.S. survey feet)

Type of monument: Harrison, 4" disk 'Section Corner'
 Depth: flush with road surface

Indiana tie card references:
 IN02_T18NR2E13_44

CORNER WITNESS DETAIL

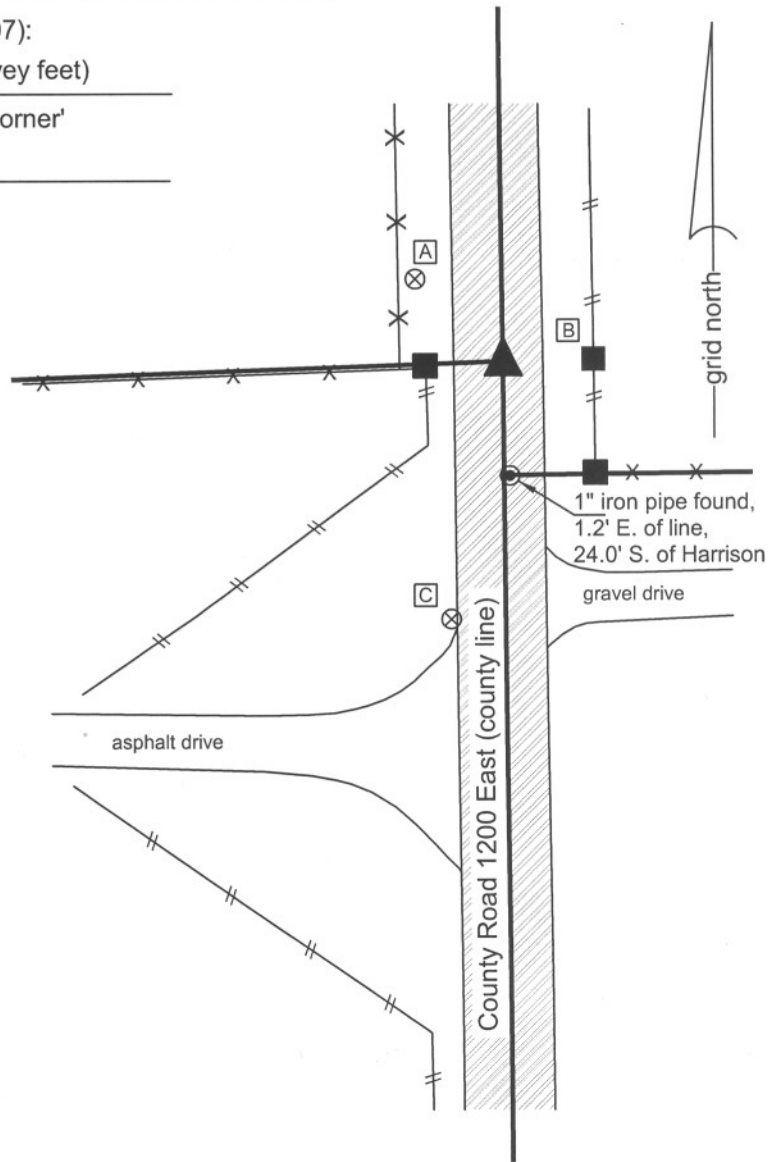
SCALE 1" = 40'



The harrison monument was set in place of a harrison monument over a stone.
 A BCS record of April 1-2, 1875 states "Reestablished. Set two rocks. lower one 18,12 by 9 +. Top one 12.24 by 17 +."
 A BCS tie card of July 5, 2006 calls for a harrison monument set over a stone with "x." The tie card does not document the size or confirm that this is the record stone, though its position fits with the local evidence in the form of the center of the road and easterly extension of the old fence to the west. The harrison monument had become unstable and the corner was excavated on September 9, 2009. The stone was found at 10 inches deep. With the top 3 inches of the stone exposed, it measures 12 inches N-S by 8 inches E-W with a vague, but visible etched "+" on the top near the east side. The harrison monument had been set over the top, high point of the stone. The new harrison monument was set in the same position as the previous harrison.
 The 1 inch iron pipe which represents the visible monument at the closing corner (Hamilton County) is 1.2 feet East of the line connecting the harrison monument with the railroad spike marking the southeast corner of section 13.
 This corner was originally established as a wood post in 1819.

- A - Boone County witness mark, flush, 24.92'
- B - Mag nail set in West side, wood post, 1.3' a.g., 19.05'
- C - Boone County witness mark, flush, 54.84'

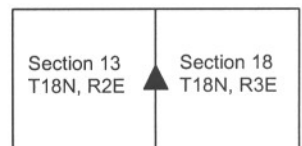
Boone County witness mark is a 3/8" diameter x 2' long rebar bearing a metal cap stamped "Boone County Witness Point."



Kenneth E. Hedge
 Kenneth E. Hedge, County Surveyor

James S. Swift
 James S. Swift, IN LS 20200054
 July 14, 2010

Union Township
 Boone County
 Washington Township
 Hamilton County



SECTION CORNER RECORD

BOONE COUNTY SURVEYOR'S OFFICE

SE 300-1100

State Plane grid coordinates NAD83 (NSRS 2007):

North: 1731212.63 East: 3183418.78 (U.S. survey feet)

Type of monument: Harrison, 4" disk 'Section Corner'

Depth: flush with adjacent ground in median

Indiana tie card references:

IN02_T18NR2E13_72 IN02_T18NR2E14_80

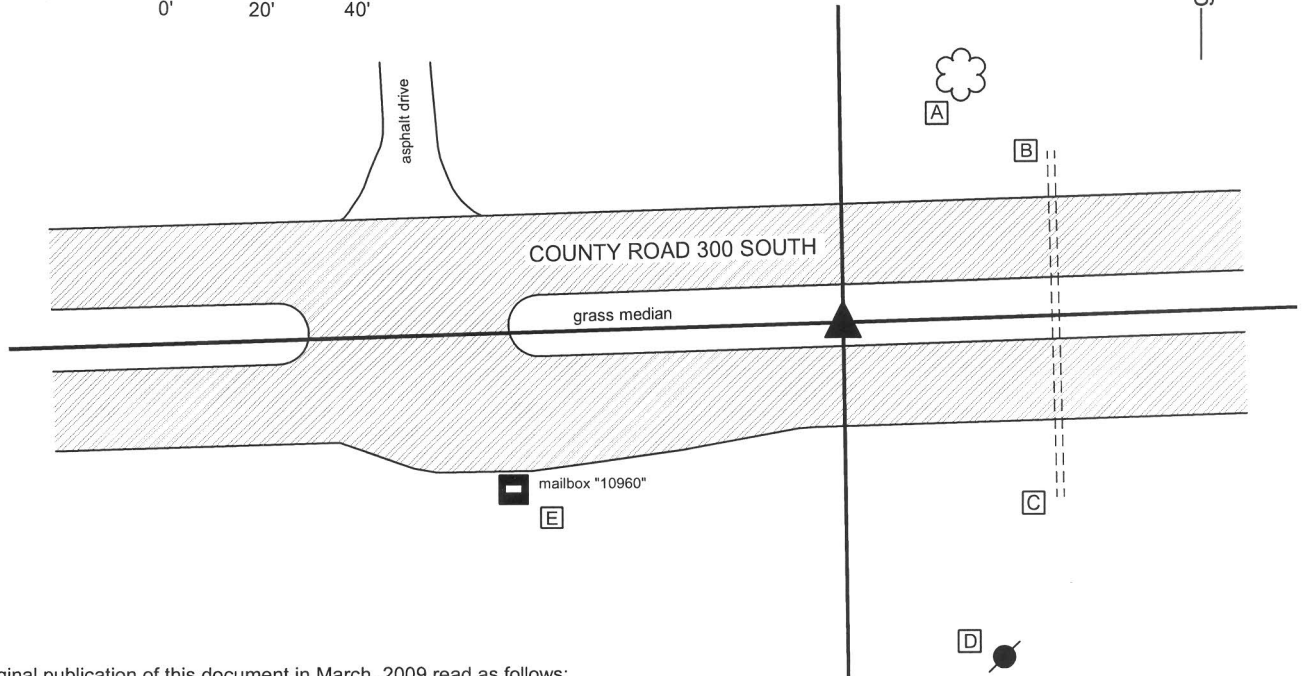
IN02_T18NR2E23_08 IN02_T18NR2E24_00

CORNER WITNESS DETAIL

SCALE 1" = 40'



- A - 16 inch diameter Oak tree, south edge at 2' a.g., 52.0'
- B - Top, North end, 20"x30" squashed concrete storm pipe, 56.0'
- C - Top, south end, 20"x30" squashed concrete storm pipe, 58.0'
- D - Mag nail set in N. side power pole, 2' a.g., 74.6'
- E - N.E. corner, steel mailbox post, # 10960, 76.5'



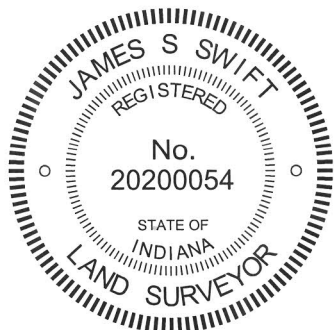
The original publication of this document in March, 2009 read as follows:

"The harrison monument was set in place of a mag nail and stone.

A BCS record of January 20, 1874 states "Reestablished after running all four lines terminating here. Set a rock 21.18.12 +". A tie card of unknown source dated May 12, 1967 states "found stone with cross. Set iron pipe over." A note added to that tie card by a field crew from this office, dated July, 1967 states "Set R.R. rail on N. side of stone." A BCS tie card dated July 5, 2006 shows the corner as a mag nail with no documentation about source. This corner was excavated on August 6, 2008. Prior to excavation a mag nail was visible, approximately one inch below the surface of the road in a hole in the asphalt. Excavation revealed the railroad rail at 20 inches deep and the stone at 23 inches deep. The etched "+" on the stone was on the north downslope of the top of the stone. The rail was leaning against the north side of the stone, extending to approximately over the "+." Please refer to the attached sheet for photographic documentation. The mag nail had been over the top, center of the stone while the top of the rail had been slightly north. All three monuments were removed. The stone was removed due to the proposed reconstruction of this section of road. The harrison monument was set in the position of the mag nail, which is also the position of the top, center of the stone.

This corner was originally established as a wood post in July, 1821."

Major reconstruction of the road since the corner was confirmed in 2009 disturbed but did not destroy the harrison monument. The monument was found at 1.2 feet deep in the grass median of the newly constructed road. The monument appeared to have been sheered off but the position of the monument had not been changed. The monument did not appear to have been tilted or displaced in any way. The damaged harrison was left in place and on May 16, 2013 a new harrison monument was set directly over the old one in the same horizontal position.



Kenneth E. Hedge

 Kenneth E. Hedge, County Surveyor

Union Twp

James S. Swift

 James S. Swift, IN LS 20200054

Eagle Twp

March 11, 2009, Revised February 5, 2015

Section 14 T18N, R2E	Section 13 T18N, R2E
Section 23 T18N, R2E	Section 24 T18N, R2E

PHOTOGRAPHIC DOCUMENTATION

Date of photography: August 6, 2008

Corner stone and railroad rail. The rail was situated against the north side of the stone, which is in agreement with the 1967 tie card.



Corner stone after rail was removed. The rail was leaning along the side of the stone with the top of the rail over the etched "+" on the stone.



Corner stone and railroad rail - both removed from ground. The stone was removed due to proposed reconstruction of County Road 300 South. The rail is 30 inches long. The stone matches the 1874 record description of "set rock 21.18.12 +"



Same picture as above with etched "+" enhanced for ease of visual detection.



For details and documentation, refer to related sheet "Section Corner Record."

SECTION CORNER RECORD

SE 300-1150

BOONE COUNTY SURVEYOR'S OFFICE

State Plane grid coordinates NAD83 (NSRS 2007):

North: 1731292.07 East: 3186073.24 (U.S. survey feet)

Type of monument: Harrison, 4" disk 'Section Corner'

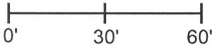
Depth: flush with the adjacent road surface

Indiana tie card references:

IN02_T18NR2E13_76

IN02_T18NR2E24_04

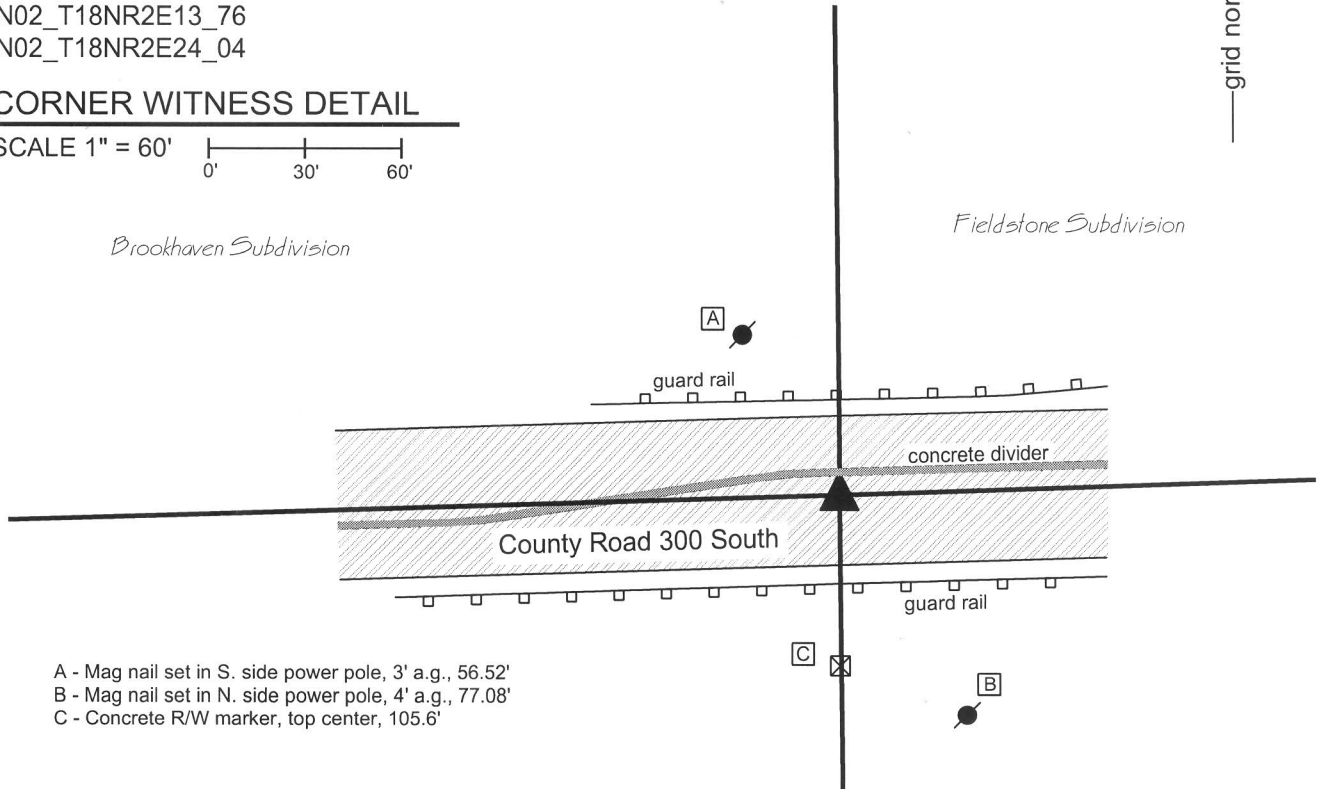
CORNER WITNESS DETAIL

SCALE 1" = 60' 



Brookhaven Subdivision

Fieldstone Subdivision



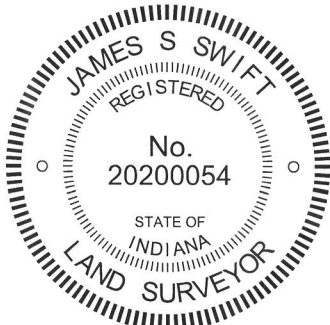
- A - Mag nail set in S. side power pole, 3' a.g., 56.52'
- B - Mag nail set in N. side power pole, 4' a.g., 77.08'
- C - Concrete R/W marker, top center, 105.6'

The original publication of this document in March, 2009 read as follows:

"The harrison monument was set in place of the top, high point of a stone found.

A BCS record of April 1-2, 1875 states "reestablished by running a line from G to E. Set Rock 28.15 by 11 +." A BCS tie card of July 17, 1967 states "no stone found." A BCS tie card of July 5, 2006 states "mag nail w/ washer found." This corner was excavated on August 7, 2008. Prior to excavation, a mag nail was visible approximately 2 inches deep in a hole in the asphalt. Excavation revealed a railroad rail found at 19 inches deep, slightly south and east of the position of the mag nail. Excavation also revealed a wood hub on the south side of the rail and two 1/2 inch rebars, one of which was against the east side of the rail and the other in the neck of the rail on the south side, west of the hub. All of these monuments were removed for purposes of further excavation. The record stone was found at 34 inches deep, north and slightly east of the rail. The stone was removed and inspected. The stone had been vertical and the dimensions of the stone exactly match the record dimensions of 28 15 by 11 inches. No specific markings were detected. It is noted that the mag nail, the railroad rail, the wood hub, the two 1/2 inch rebars and the stone comprise six monuments, all of which were within approximately a one foot diameter horizontal circle, none of which were in the exact same horizontal position. The record stone was held as the corner and the harrison monument was set in the position of the distinct top, high point of the stone. The mag nail had been approximately 0.4 foot South and 0.4 foot West of the high point of the stone. The stone was removed due to the proposed reconstruction of this section of road. This corner was originally established as a wood post in July, 1821."

Major reconstruction of the road since the corner was confirmed in 2009 destroyed the monument set at that time. A new harrison monument was set in the same position on September 13, 2013.




 Kenneth E. Hedge, County Surveyor


 James S. Swift, IN LS 20200054

March 11, 2009, Revised February 5, 2015

Union Township

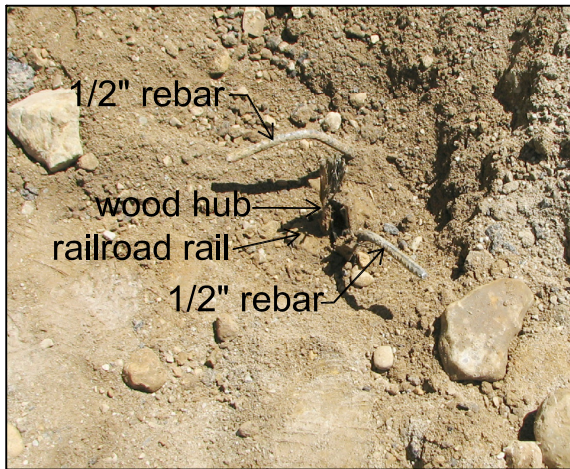
Section 13
T18N, R2E

Eagle Township

Section 24
T18N, R2E

PHOTOGRAPHIC DOCUMENTATION

Date of photography: August 6, 2008



Above:
Railroad rail, wood hub and two 1/2" rebars.



Above right:
Corner stone, exposed at bottom of fill.
The top of the stone was 34 inches below the pavement.



Right:
Assistant County Surveyor Carol Cunningham observes stone hunter Junior Franklin brush the stone in search of markings, particularly an etched "+".

Right:
The stone shown as removed from the ground. The stone was removed due to the proposed reconstruction of County Road 300 South. Though no specific markings were found, the stone matches the dimensions of the 1875 record "set rock 28.15 by 11 +" (without the +).



For details and documentation, refer to related sheet "Section Corner Record."

SECTION CORNER RECORD

SE 300-1200

BOONE COUNTY SURVEYOR'S OFFICE

State Plane grid coordinates NAD83 (NSRS 2007):

Corner 1: North: 1731379.40 East: 3188721.68 (U.S. survey feet)

Corner 2: North: 1731346.40 East: 3188721.89 (U.S. survey feet)

Type of monument: Harrison, 4" disk 'Section Corner'

Depth: flush or 1 inch deep.

Indiana tie card references:

IN02_T18NR2E13_80

IN02_T18NR2E24_08

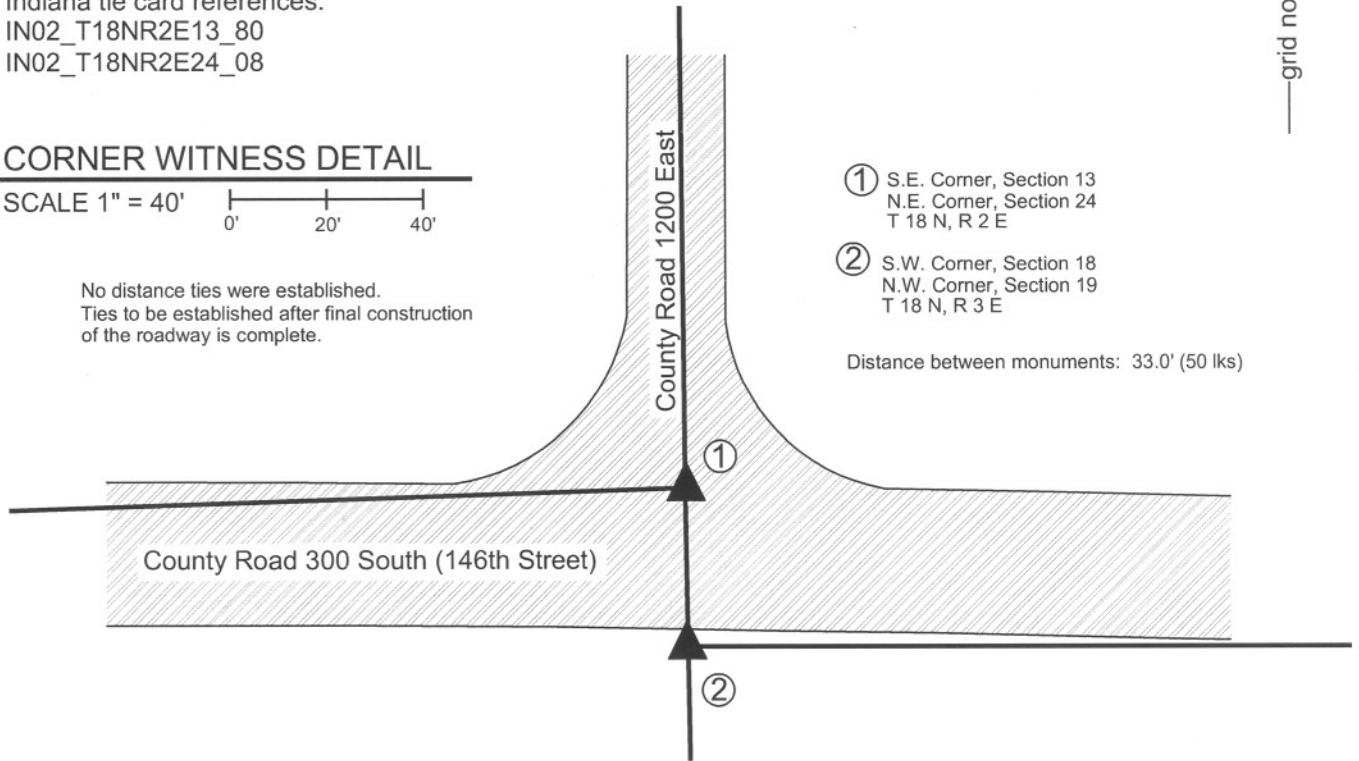


CORNER WITNESS DETAIL

SCALE 1" = 40'



No distance ties were established.
Ties to be established after final construction of the roadway is complete.

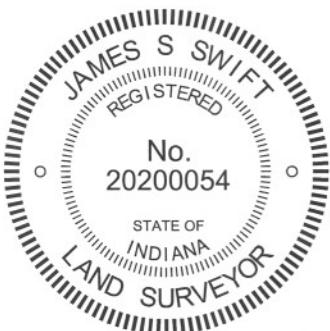


① S.E. Corner, Section 13
N.E. Corner, Section 24
T 18 N, R 2 E

② S.W. Corner, Section 18
N.W. Corner, Section 19
T 18 N, R 3 E

Distance between monuments: 33.0' (50 lks)

The harrison monument at corner 1 was set in place of a railroad spike found and the harrison monument at corner 2 was set in place of a brass plug in concrete found. The spike and plug had both been removed during road construction in 2010 or 2011. This corner was documented in detail as part of a survey by James D. Hall, LS 20500017 with Anderson and Associates dated July 7, 2006. The Hall survey was commissioned by the Boone County Surveyor and is on file in the Surveyor's Office. The findings of that survey are upheld by this document and the harrison monuments were set at the corner positions determined by that survey. Prior to the Hall survey, confusion existed with respect to the location of corner 1. Two railroad spikes existed in the vicinity of that corner. One, being at 50 links (33 feet) north of the brass plug in concrete at corner 2 and the other being at 24.2 feet north. Mr. Hall determined that the northerly of the two monuments was over an Indot Type C Monument set as part of a road construction project in 1963. The southerly of the two railroad spikes was set at a position shown on a BCS tie card dated July 17, 1967 with the statement "no stone found." The Hall survey notes that it is believed likely that this railroad spike was over a section of railroad rail, a monument commonly used by BCS field crews in the late 1960s. Although the southerly of the two spikes has been held as the corner for some surveys, the Hall survey determined that the northerly of the two spikes represents an older and more likely position for the corner. All known monumentation was removed during 2010 or 2011 as part of the reconstruction of County Road 300 South (146th Street.). The current harrison monuments were set at the positions of the brass plug in concrete (corner 2) and northerly of the two railroad spikes (corner 1) on August 30 and 31, 2011.



Kenneth E. Hedge
Kenneth E. Hedge, County Surveyor

James S. Swift
James S. Swift, IN LS 20200054
March 30, 2012

		Boone County	Hamilton County		
Eagle Twp	Union Twp	Section 13 T18N, R2E	Section 18 T18N, R3E	Washington Twp	▲
	Clay Twp	Section 24 T18N, R2E	Section 19 T18N, R3E		

SECTION CORNER RECORD

SE 300-1200

BOONE COUNTY SURVEYOR'S OFFICE

State Plane grid coordinates NAD83 (2011):

Corner 1: North: 1731379.43 East: 3188721.82 (U.S. survey feet)
 Corner 2: North: 1731346.62 East: 3188721.91 (U.S. survey feet)

Both corners: Harrison, 4" disk 'Section Corner', flush

Indiana tie card references:

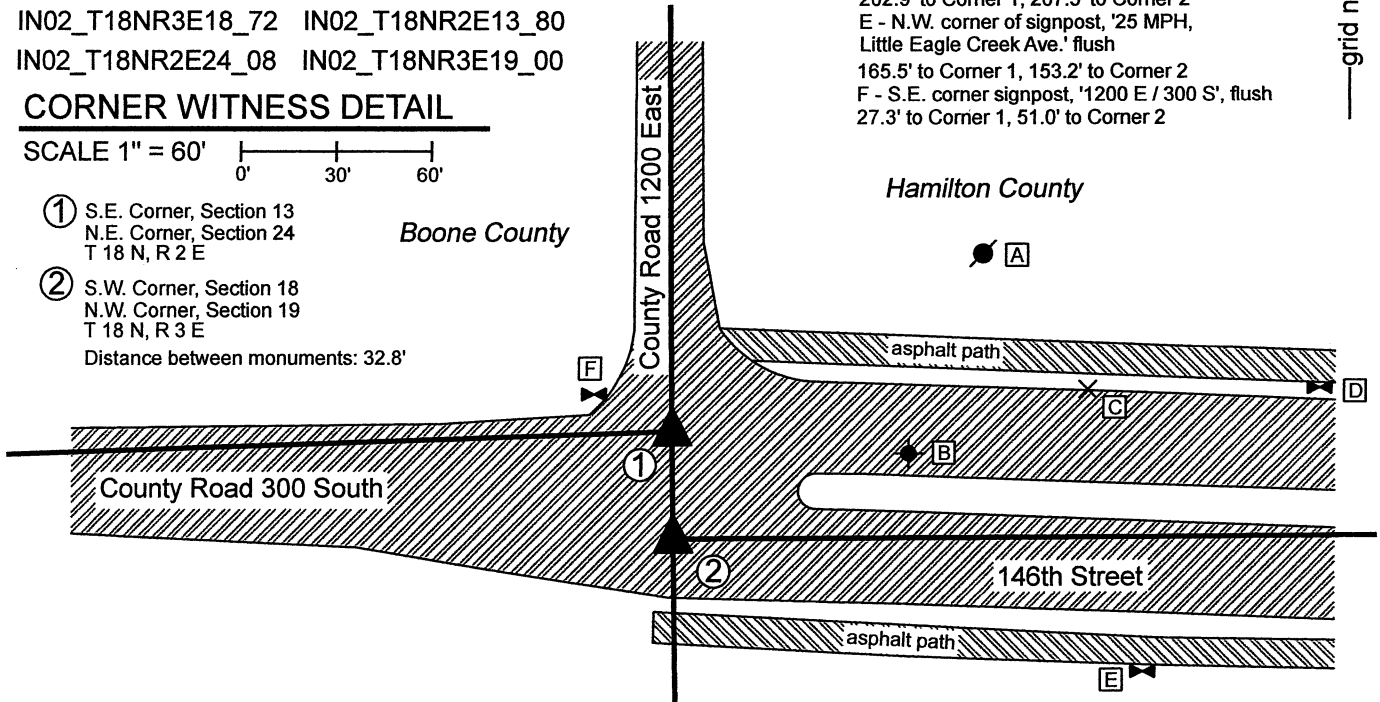
IN02_T18NR3E18_72 IN02_T18NR2E13_80
 IN02_T18NR2E24_08 IN02_T18NR3E19_00

CORNER WITNESS DETAIL

SCALE 1" = 60'

- ① S.E. Corner, Section 13
 N.E. Corner, Section 24
 T 18 N, R 2 E
- ② S.W. Corner, Section 18
 N.W. Corner, Section 19
 T 18 N, R 3 E
 Distance between monuments: 32.8'

- A - Mag nail set in S. side power pole, 2' a.g., 111.8' to Corner 1, 131.1' to Corner 2
- B - Plug in monument box, flush, 74.4' to Corner 1, 78.3' to Corner 2
- C - X chiseled in top of road drain casting, w. side 130.8' to Corner 1, 137.8' to Corner 2
- D - S.W. corner of signpost, 'Right Turn Only', flush 202.9' to Corner 1, 207.5' to Corner 2
- E - N.W. corner of signpost, '25 MPH, Little Eagle Creek Ave.' flush 165.5' to Corner 1, 153.2' to Corner 2
- F - S.E. corner signpost, '1200 E / 300 S', flush 27.3' to Corner 1, 51.0' to Corner 2

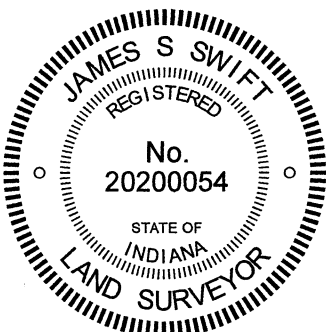


The Harrison monuments at both corners were set by road contractors during the recent reconstruction of this intersection in September, 2021. The monument set at the Boone County corner (Corner 1) was set in the position of a Mag nail set by this office to mark the position of a Harrison monument which previously marked the corner. The Hamilton County Surveyor's Office provided the position by which the Harrison monument at Corner 2 was set.

The most recent BCS documentation for this corner was a tie card dated March 30, 2012, which also followed reconstruction of the intersection and new monumentation of the corners in 2011. A summary of the previous documentation is as follows:

This corner was documented in detail as part of a survey by James D. Hall, LS 20500017 with Anderson and Associates dated July 7, 2006. The Hall survey was commissioned by the Boone County Surveyor and is on file in the Surveyor's Office. The findings of that survey are upheld by this document and the corners were monumented at the positions determined by that survey. Prior to the Hall survey, confusion existed with respect to the location of Corner 1. Two railroad spikes existed in the vicinity of that corner. One, being at 50 links (33 feet) north of the brass plug in concrete at Corner 2 and the other being at 24.2 feet north. Mr. Hall determined that the northerly of the two monuments was over an INDOT Type C Monument set as part of a road construction project in 1963. The southerly of the two railroad spikes was set at a position shown on a BCS tie card dated July 17, 1967 with the statement "no stone found." The Hall survey notes that it is believed likely that this railroad spike was over a section of railroad rail, a monument commonly used by BCS field crews in the late 1960s. Although the southerly of the two spikes has been held as the corner for some surveys, the Hall survey determined that the northerly of the two spikes represents an older and more likely position for the corner. All known monumentation was removed during 2010 or 2011 as part of the reconstruction of County Road 300 South (146th Street).

Variations between coordinates shown hereon and shown on the 2012 document represent variations in observed GPS positions with respect to the NAD83 (NSRS 2007) (held for the previous positions) adjustment and the NAD83 (2011) adjustment.



Kenneth E. Hedge
 Kenneth E. Hedge, County Surveyor

James S. Swift
 James S. Swift, IN LS 20200054
 December 20, 2021

Boone County	Hamilton County
Section 13 T18N, R2E Union Township	Section 18 T18N, R3E Washington Township
Section 24 T18N, R2E Eagle Township	Section 19 T18N, R3E Clay Township