

SECTION CORNER RECORD

SW 200-000

BOONE COUNTY SURVEYOR'S OFFICE

State Plane grid coordinates NAD83 (2011):

North: 1734990.59 East: 3124895.92 (U.S. survey feet)

North: 1735188.75 East: 3129897.92 (U.S. survey feet)

Type of monument: Harrison, 4" disk 'Section Corner'

Depth: One inch below adjacent road surface

Indiana tie card references:

IN02_T18NR1W12_80 IN02_T18NR1E07_72

IN02_T18NR1W13_08 IN02_T18NR1E18_00

CORNER WITNESS DETAIL

SCALE 1" = 60'

- A - Boone County witness mark, flush
165.1' to corner 1, 14.5' to corner 2
- B - Boone County witness mark, flush
48.1' to corner 1, 127.9' to corner 2
- C - Mag nail set in W. side power pole, 2' a.g.
21.3' to corner 1, 165.4' to corner 2
- D - Mag nail set in E. side wood end post, 2' a.g.
20.0' feet to corner 1, 175.7' to corner 2

① S.E. Corner, Section 12
N.E. Corner, Section 13
T 18 N, R 1 W

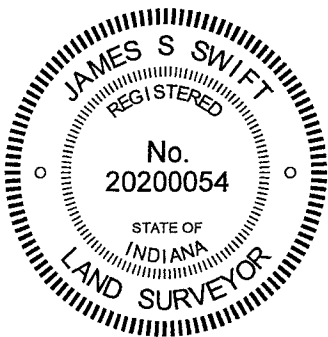
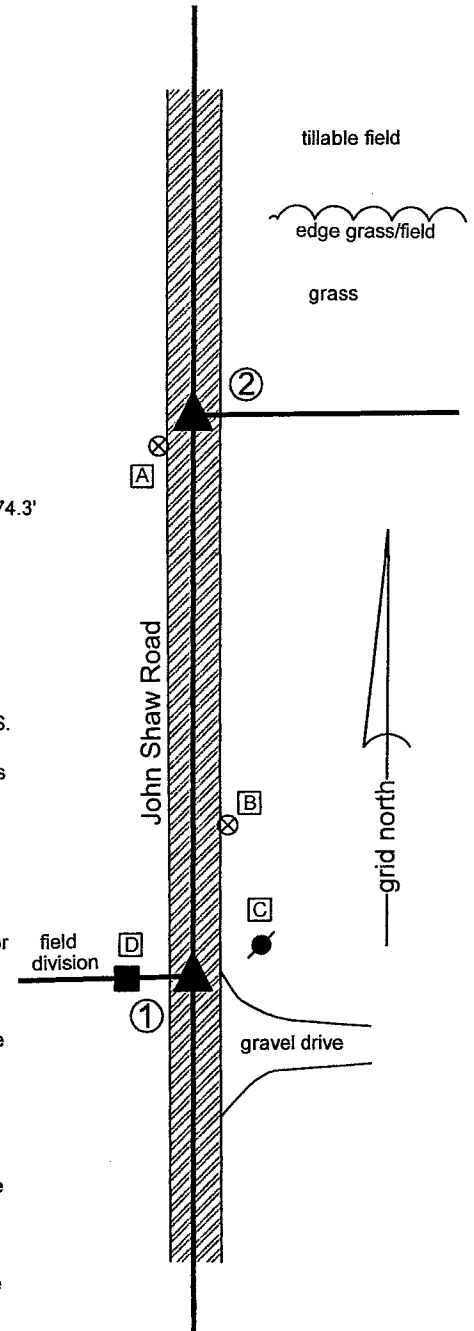
② S.W. Corner, Section 7
N.W. Corner, Section 18
T 18 N, R 1 E

Distance between monuments: 174.3'

Original federal closing distance:
264 links = 174.24'

The Harrison monument at Corner 1 was set in place of a vertical section of railroad rail found. The Harrison monument at Corner 2 was set adjacent to the position of a rebar found. A BCS record of May 23, 1866 states, with respect to Corner 1, "Reest. found by measure 264 links S. of cor. of Sects 7 & 18 found stumps of trees. Rock 22.12.9 + on W. side. No specific descriptions of Corner 2 were found in the BCS Surveyor's Record beyond the original establishment of the corner as a wood post in 1820, 264 links N. of the wood post set at Corner 1 in 1819. A BCS tie card dated February 26, 1992 shows Corner 1 as a railroad rail found. Excavation was performed at Corner 1 on May 6, 2013. Prior to excavation, a nail was found at 4 inches below grade in the center of the road, in-line with a wood post on the west side of the road. Excavation revealed a vertical section of railroad rail found at 7 inches deep, directly below the nail. Further excavation to 2.5 feet north, west and south and 4 feet east of the rail did not reveal more evidence of the corner. The stone called in the 1866 record was not found. A possible explanation for this may be that the stone was found and removed when the rail was set. No record was found to indicate when the rail was set, though it was most likely set in the late 1960s or early 1970s and it is known that BCS crews of that era often removed stones, if found, and replaced them with rails. Another explanation may be that, due to mixture of sand and rocky material found at the bottom of the road bed, this area appears that it was wet during the wagon road era and the stone may have been removed when the road bed was built up. The rail was accepted as the best available evidence of Corner 1 and replaced with a Harrison monument in the same position on May 7, 2013. Excavation at Corner 2 on May 7, 2013 revealed a one-foot length of 5/8 inch rebar at 6 inches deep and a fragment of wood stake found near the bottom of the road bed. The fragments of the stake were ill defined with respect to precise position. Excavation of a five-foot square area centered on the rebar did not reveal further evidence of this corner. The rebar, being at the 264 link offset distance from the rail at Corner 1, was held to define the north-south dimension of Corner 2. A mag spike was set in place of the rebar temporarily on May 7, 2013. This spike was replaced with a Harrison monument set on the range line as defined by Corner 1 and the east quarter corner of section 12 (see BCS Corner SW 150-000) on July 14, 2016. This position is 0.1 foot west of the position of the rebar originally found.

Corner 1 was originally set as a wood post in 1819. Corner 2 was originally set as a wood post in 1820.



Kenneth E. Hedge
Kenneth E. Hedge, County Surveyor

James S. Swift
James S. Swift, IN LS 20200054

March 9, 2021

Center Township

Section 12 T18N, R1W	Section 7 T18N, R1E
Section 13 T18N, R1W	Section 18 T18N, R1E

SECTION CORNER RECORD

SW 250-000

BOONE COUNTY SURVEYOR'S OFFICE

State Plane grid coordinates NAD83 (2011):

Corner 1: North: 1732335.32 East: 3124909.32 (U.S. survey feet)

Corner 2: North: 1732499.47 East: 3124908.48 (U.S. survey feet)

Type of monument: Harrison, 4" disk 'Section Corner'

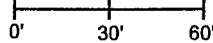
Depth: Flush with adjacent ground (1) and road (2)

Indiana tie card references:

IN02_T18NR1W13_44 IN02_T18NR1E18_36

CORNER WITNESS DETAIL

SCALE 1" = 60'



The Harrison monument at Corner 1 was set in place of a stone found and the Harrison monument at Corner 2 was set on the range line, as defined by Corner 1 and the northeast corner of Section 13, T18N, R1W (see BCS Corner SW 200-000), at the same north-south position as a stone found.

A BCS record of October 27, 1890 states, with respect to Corner 1, "Reestablished by lap and measurements. Set two rocks, one 9x7x5+. Top one 17x10x8+." A BCS record of June 16, 1854 shows Corner 2 as "Stone marked 1/4 S. 18." A record of May 6, 1908 references Corner 2, but this reference is believed to refer to the southwest corner of section 18, not the west quarter corner of that section.

A BCS tie card dated September 1, 1995 shows Corner 1 as a metal fence post and Corner 2 as a railroad rail.

Corner 1 was excavated on May 6, 2013. At that time, the lower of the two stones described in the 1890 record was found at two feet deep. Remnants of an old wood corner post were also found adjacent to and south of the stone. The stone was removed and a Harrison monument was set in place of the top, center of the stone as found. A 5/8-inch diameter rebar found prior to excavation had been 0.2 foot east and 0.3 foot south of the corner.

Corner 2 was excavated on May 14, 2013. Prior to excavation, a Mag nail was found at the surface of the road. Excavation revealed a vertical section of railroad rail below the nail.

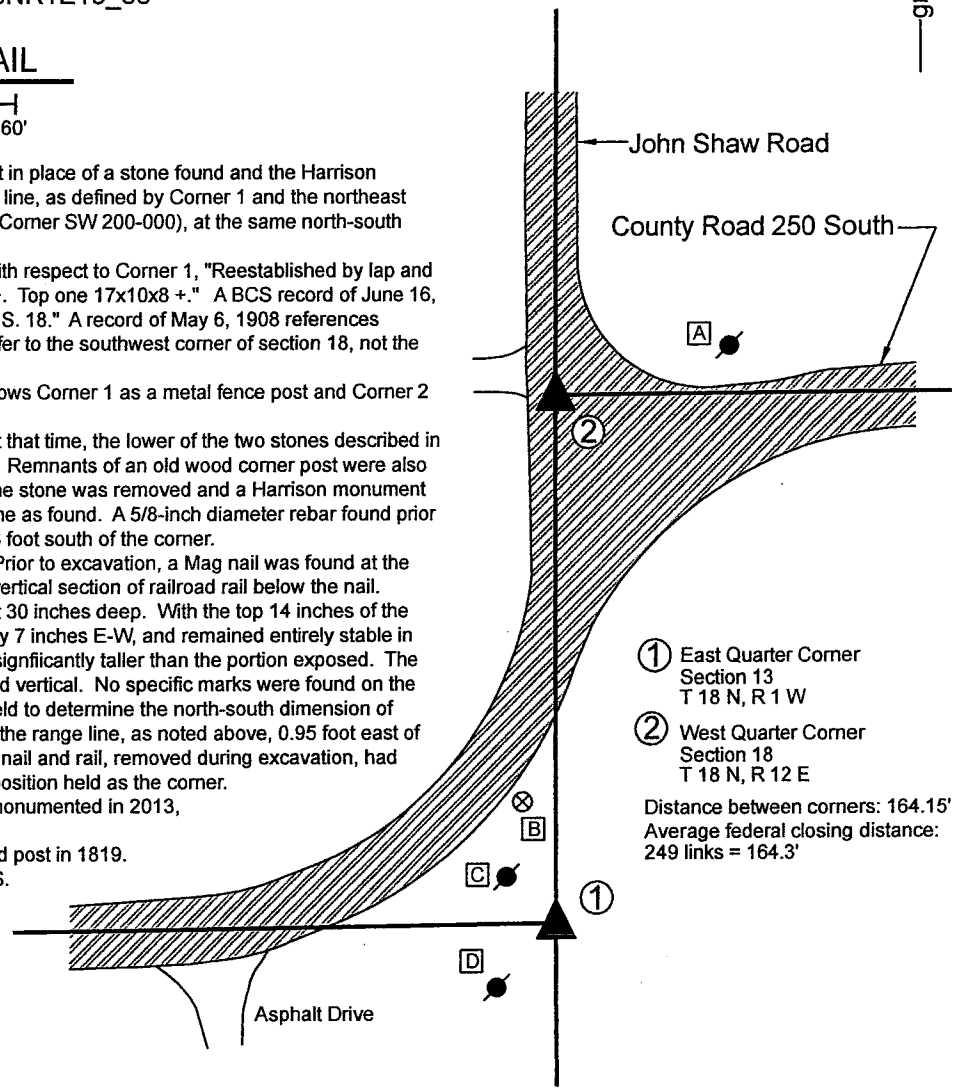
Further excavation revealed a stone found at 30 inches deep. With the top 14 inches of the stone exposed, it measured 12 inches N-S by 7 inches E-W, and remained entirely stable in the ground, clear evidence that the stone is significantly taller than the portion exposed. The east and west sides of the stone were flat and vertical. No specific marks were found on the part of the stone exposed. The stone was held to determine the north-south dimension of Corner 2. A Harrison monument was set on the range line, as noted above, 0.95 foot east of the top, center / high point of the stone. The nail and rail, removed during excavation, had been 0.6 foot south and 0.4 feet east of the position held as the corner.

Though these corners were excavated and monumented in 2013, no documentation was produced at that time.

Corner 1 was originally established as a wood post in 1819.

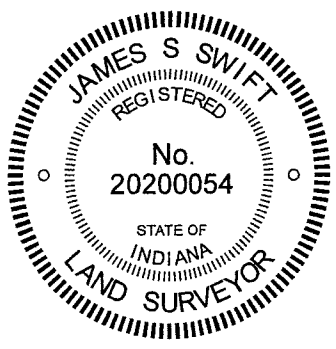
Corner 2 is not an original corner of the PLSS.

- A - Mag nail set in S. side power pole, 2' a.g. 56.8' to Corner 2
- B - Boone County Witness Mark, flush 39.2' to Corner 1, 164.2' to Corner 2
- C - Mag nail set in N. side power pole, 2' a.g. 21.2' to Corner 1
- D - Mag nail set in N. side power pole, 2' a.g. 25.2' to Corner 1



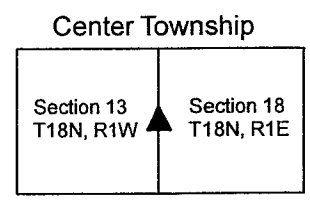
- ① East Quarter Corner Section 13 T 18 N, R 1 W
- ② West Quarter Corner Section 18 T 18 N, R 12 E

Distance between corners: 164.15'
Average federal closing distance: 249 links = 164.3'



Kenneth E. Hedge
Kenneth E. Hedge, County Surveyor

James S. Swift
James S. Swift, IN LS 20200054
March 9, 2021



SECTION CORNER RECORD

SW 250-100

BOONE COUNTY SURVEYOR'S OFFICE

State Plane grid coordinates NAD83 (2011):

North: 1732249.83 East: 3119547.27 (U.S. survey feet)

Type of monument: Harrison, 4" disk 'Section Corner'

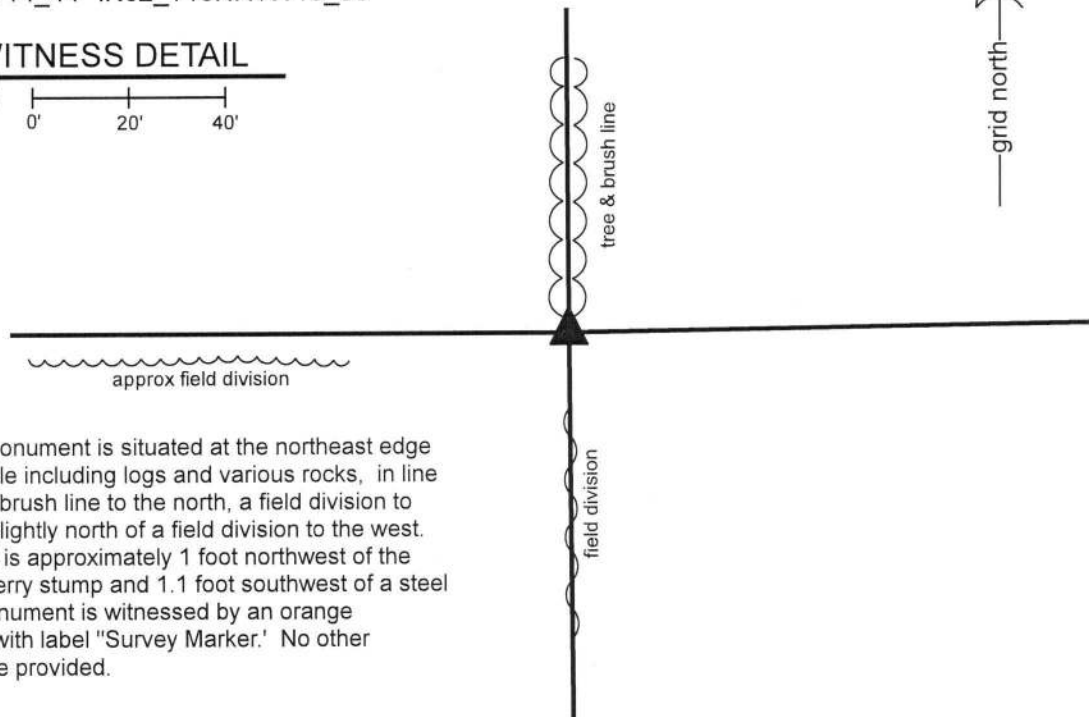
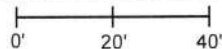
Depth: Four inches above adjacent ground

Indiana tie card references:

IN02_T18NR1W14_44 IN02_T18NR1W13_36

CORNER WITNESS DETAIL

SCALE 1" = 40'



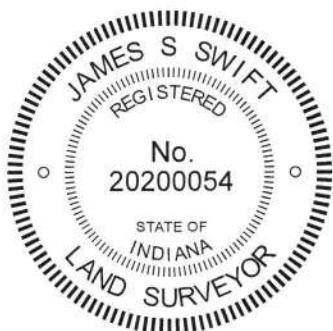
The Harrison monument is situated at the northeast edge of a pile of rubble including logs and various rocks, in line with a tree and brush line to the north, a field division to the south and slightly north of a field division to the west. The monument is approximately 1 foot northwest of the edge of a mulberry stump and 1.1 foot southwest of a steel t-post. The monument is witnessed by an orange fiberglass lath with label "Survey Marker." No other distance ties are provided.

The Harrison monument was set in place of a wood post found.

A BCS record dated April 27, 1870 states, with respect to this corner, "Rock large from Elm Stump." No dimensions are given for the rock. No recent BCS tie cards were found referencing the corner.

Reconnaissance and minor excavation was performed at this corner on October 16, 2016. More substantial excavation was performed on December 19, 2018. On both occasions a large, ancient wood post was observed. Several rocks were found around the base of the post, none of which appeared to have been purposely set to mark the corner. A stone at the southwest edge of the post appeared that it could mark the corner, but was found to be sitting on top of the ground, not embedded in any way and easily moved with a shovel. The stone was of medium size, not "large" as compared to other found corner stones that are known to mark corners. The stone was not accepted as marking the corner. The post is clearly old, appears to have been a corner post and is known to have been held as marking the corner for previous surveys. Kevin Miller, owner of the adjoining property to the southwest, testifies that this post has long been accepted as marking the corner. The post, as found, was stable and firmly set in the ground. The post was pulled from its position by Mr. Miller and a Harrison monument was set in its place on December 20, 2018. For purposes of protecting the monument, the aforementioned rock was placed at the northeast edge of the monument.

This corner was originally established as a wood post in 1820.



Kenneth E. Hedge
Kenneth E. Hedge, County Surveyor

James S. Swift
James S. Swift, IN LS 20200054
January 16, 2019

Center Township

Section 14 T18N, R1W	Section 13 T18N, R1W
-------------------------	-------------------------

SECTION CORNER RECORD

SW 300-000

BOONE COUNTY SURVEYOR'S OFFICE

State Plane grid coordinates NAD83 (2011):

Corner 1: North: 1729684.83 East: 3124928.56 (U.S. survey feet)

Corner 2: North: 1729838.60 East: 3124927.45 (U.S. survey feet)

Corner 1: 5/8 inch diameter rebar, 24-inches long with aluminum cap stamped "Boone County Surveyor", 11" below grade

Corner 2: Harrison, 4" disk 'Section Corner', flush

Indiana tie card references:

IN02_T18NR1E18_72 IN02_T18NR1W13_80

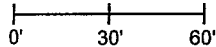
IN02_T18NR1W24_08 IN02_T18NR1E19_00

① S.E. Corner, Section 13
N.E. Corner, Section 24
T 18 N, R 1 W

② S.W. Corner, Section 18
N.W. Corner, Section 19
T 18 N, R 1 E

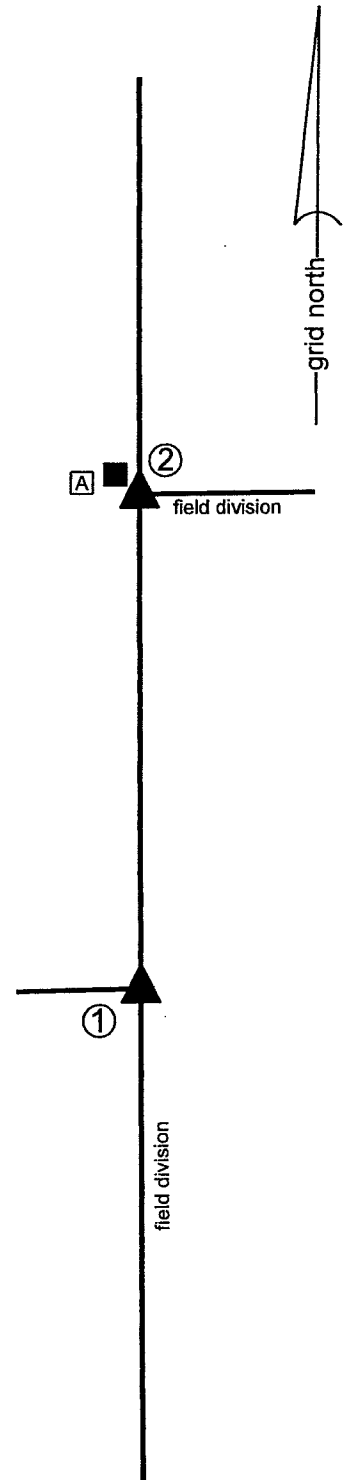
CORNER WITNESS DETAIL

SCALE 1" = 60'



A - Wood post, 0.98' N.W. of Harrison at corner 2

Distance between monuments:
233 links = 158.44 feet



The Harrison monument at Corner 2 was set in place of a stone found. The rebar with cap at Corner 1 was set on the meridian line, as defined by Corner 2 and the standard corner 1/2 mile north, at a point 233 links from Corner 2. Both of these corners are addressed in BCS records of March 30, 1874. The record of that date pertaining to Corner 1 states "Reest. from trees. Rock 9.5 1/2.5 +." The record of that date pertaining to Corner 2 states, "Reestablished from roots of Beech. Set a Rock 16,13,4 to 7 marked +. Is 233 links North of corner, Sections 13 & 24." No recent BCS tie cards were found referencing these corners.

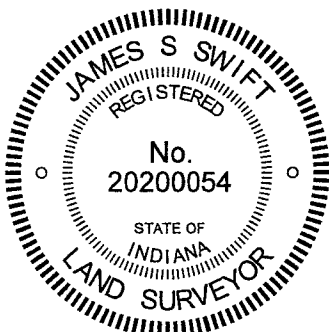
Both corners were excavated on March 10, 2021. Prior to excavation, a wood post was observed standing at the intersection of field divisions to the north, south and east. No other evidence of the corners was visible. It was observed that the position of the wood corner post was almost precisely on the westerly prolongation of a line connecting the north quarter corner and northeast corner of section 19.

Excavation in the vicinity of the wood post revealed the base of another, presumably older, wood corner post east of and adjacent to the standing post. The stone described in the 1874 record for Corner 2 was found at 8 inches deep, immediately south of and adjacent to the base of the old wood post. The stone was vertical and oriented in cardinal directions, as found, with the top of the rock being flat, horizontal and clearly oriented in the east-west dimension. The east edge of the stone was found to be approximately 5 inches wide while the west edge of the stone was 7 inches wide. The stone measured 13 inches east west by 14 inches tall, as measured vertically, and 16 inches, as measured diagonally. No marks were observed on the top of the stone. However, when the stone was removed from the ground, a distinct etched "+" mark was clearly visible on the bottom of the stone. Typically, these marks are found at the top or sides of the stones. Either the stone was installed upside-down in 1874 or the stone has been removed and replaced in that orientation. No other evidence that it may have been moved or disturbed was observed.

Excavation of a position 233 links (158.44 feet) south of the found stone revealed another stone and the base of an old cedar corner post. The base of the post was found at 11 inches deep, at precisely 233 links south of the stone found at Corner 2. The found stone was 1 foot further south and slightly east. This stone was found at the surface of the field. It did not match the dimensions called in the 1874 record and appeared that it could be easily moved. The stone called as marking Corner 1 in the 1874 record was not found. It is noted that it was rather small and that the base of the post was found several inches deeper in the field than was the stone at Corner 1.

It is also noted that the original federal notes state that Corner 2 was established 234 links north of Corner 1, but the 1874 record specifically stipulates a separation of 233 links, which precisely matches the evidence found. The stone at Corner 2 was removed and replaced with a Harrison monument on March 10, 2021. The precise position of Corner 1 was established on the southerly prolongation of the line connecting Corner 2 and the east quarter corner of section 13 (See BCS Corner SW 250-000) at a distance of 233 links or 158.44 feet. The position falls adjacent to and east of the base of the 8-inch diameter cedar post and in-line with the north-south field division. A 24-inch length of 5/8-inch diameter rebar with metal cap stamped 'Boone County Surveyor' was set 11 inches deep on March 12, 2021.

Corner 1 was originally established as a wood post in 1819. Corner 2 was originally established as a wood post in 1820.



Kenneth E. Hedge
Kenneth E. Hedge, County Surveyor

James S. Swift
James S. Swift, IN LS 20200054
March 17, 2021

Center
Township

Section 13 T18N, R1W	Section 18 T18N, R1E
-------------------------	-------------------------

Harrison
Township

Section 24 T18N, R1W	Section 19 T18N, R1E
-------------------------	-------------------------

SECTION CORNER RECORD

SW 300-100

BOONE COUNTY SURVEYOR'S OFFICE

State Plane grid coordinates NAD83 (2011):

North: 1729602.68 East: 3119571.82 (U.S. survey feet)

Type of monument: Harrison, 4" disk 'Section Corner'

Depth: One inch below adjacent road surface

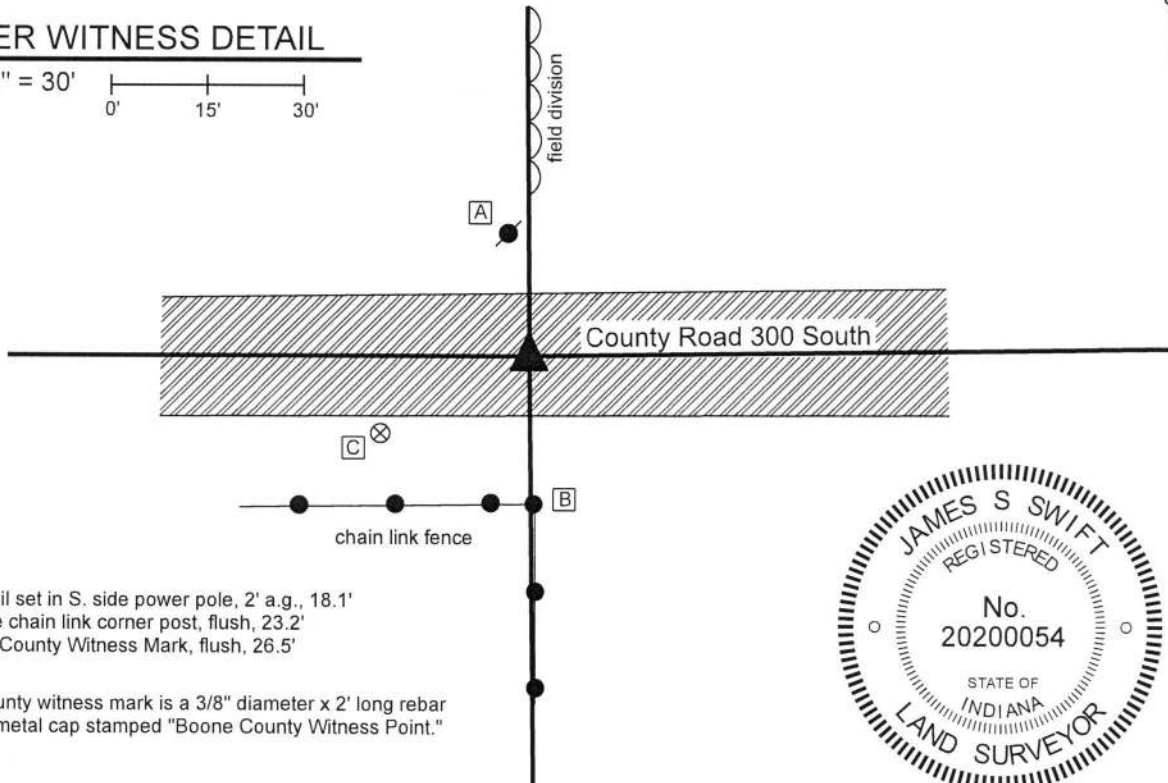
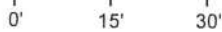
Indiana tie card references:

IN02_T18NR1W14_80 IN02_T18NR1W13_72

IN02_T18NR1W23_08 IN02_T18NR1W24_00

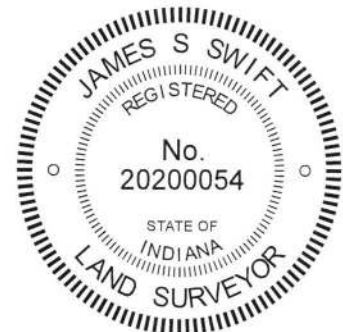
CORNER WITNESS DETAIL

SCALE 1" = 30'



- A - Mag nail set in S. side power pole, 2' a.g., 18.1'
- B - S. edge chain link corner post, flush, 23.2'
- C - Boone County Witness Mark, flush, 26.5'

Boone County witness mark is a 3/8" diameter x 2' long rebar bearing a metal cap stamped "Boone County Witness Point."



The Harrison monument was set over a vertical section of railroad rail found.

No specific descriptions of this corner were found in the BCS Surveyor's record beyond the original establishment of the corner as a wood post in 1820. The corner is referenced, but not described, in a record of June 18, 1861, indicating that some object was present from which to measure at that time. A BCS tie card dated July 24, 1967 shows the corner as stone located.

Minor excavation was performed at this corner on on June 29, 2018. Prior to excavation, a Mag nail was found at the surface. Excavation revealed a vertical section of railroad rail at 9 inches deep, approximately below the mag nail. Although the rail is not specifically mentioned in the 1967 record, it is known that the practice of BCS field crews in that era was to remove a stone, if found, and replace it with a railroad rail. No stone or other evidence was found near the rail during excavation. It is believed that the stone was removed and replaced with the rail in 1967. The rail fits with evidence of occupation to the north and south. The rail was accepted as marking the corner. The rail was left in place, two sections of 3/8" diameter rebar were driven on the sides of the rail, and a Harrison monument was set directly over the top of the rail.

Kenneth E. Hedge
 Kenneth E. Hedge, County Surveyor

James S. Swift
 James S. Swift, IN LS 20200054
 July 25, 2018

Center Township

Section 14 T18N, R1W	Section 13 T18N, R1W
-------------------------	-------------------------

Harrison Township

Section 23 T18N, R1W	Section 24 T18N, R1W
-------------------------	-------------------------

