

SECTION CORNER RECORD

SE 100-1100

BOONE COUNTY SURVEYOR'S OFFICE

State Plane grid coordinates NAD83 (NSRS 2007):
 North: 1741780.88 East: 3183299.48 (U.S. survey feet)

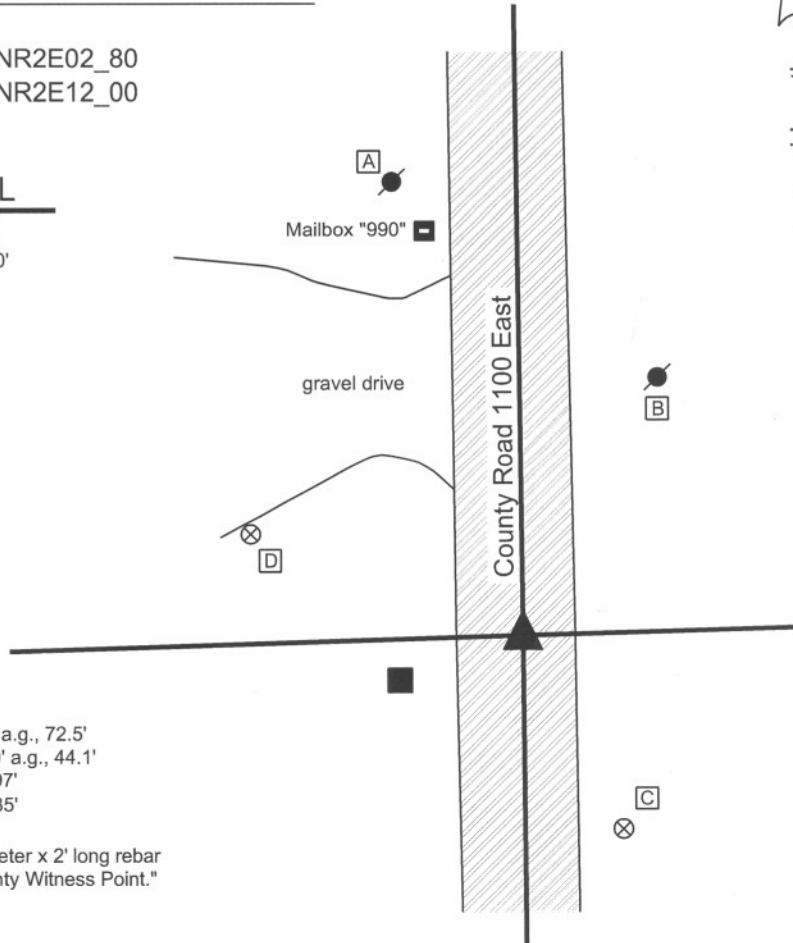
Type of monument: Harrison, 4" disk 'Section Corner'
 Depth: One inch below adjacent road surface

Indiana tie card references:
 IN02_T18NR2E01_72 IN02_T18NR2E02_80
 IN02_T18NR2E11_08 IN02_T18NR2E12_00



CORNER WITNESS DETAIL

SCALE 1" = 30'
 0' 15' 30'



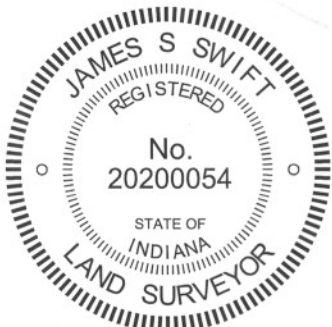
- A - Mag nail set in SE side power pole, 2.0 a.g., 72.5'
- B - Mag nail set in SW side power pole, 2.0' a.g., 44.1'
- C - Boone County witness mark, flush, 33.97'
- D - Boone County witness mark, flush, 45.35'

Boone County witness mark is a 3/8" diameter x 2' long rebar bearing a metal cap stamped "Boone County Witness Point."

The harrison monument was set over a stone found.

A BCS record of August 25, 1871 states "Reestablished Set a Rock 20.12 by 9 +." A BCS tie card dated May 31, 1991 shows the corner as a 5/8 inch rebar found. This corner was excavated on May 1, 2009. Prior to excavation a 5/8 inch rebar with a red plastic cap was found flush with the surface, in agreement with the 1991 distance ties. Excavation revealed the record stone found at 16 inches deep south and east of the rebar. With 13 inches of the stone exposed, the stone measures 12 inches E-W by 9 inches N-S. The etched "+" is clearly visible on the top of the stone. The stone is completely embedded in the clay layer below the road bed, with the top of the stone approximately at the top of the clay layer. The stone is split horizontally at 6 inches from the top. After measuring and documenting the stone, the top portion was reset on the bottom portion and packed back together with the surrounding clay. The entire stone was left in place. The harrison monument was set directly over the etched "+" on the stone, which point is 1.1 feet south and 3.5 feet east of the rebar (removed during excavation.)

This corner was originally established as a wood post in July, 1821.



Kenneth E. Hedge
 Kenneth E. Hedge, County Surveyor

James S. Swift
 James S. Swift, IN LS 20200054
 July 14, 2010, Revised April 30, 2012

Union Township

Section 2 T18N, R2E	Section 1 T18N, R2E
Section 11 T18N, R2E	Section 12 T18N, R2E

PHOTOGRAPHIC DOCUMENTATION

Date of photography: May 1, 2009

View of the stone as first exposed.



View of the stone more fully exposed.
View from above and south.



View from over the stone, looking north along
County Road 1100 East.



Similar view to above with the etched mark
on the top of the stone brushed clean.



View of the stone from above and west.



For details and documentation, refer to
related sheet "Section Corner Record."

SECTION CORNER RECORD

BOONE COUNTY SURVEYOR'S OFFICE

SE 100-1200

State Plane grid coordinates NAD83 (NSRS 2007):
 North: 1741927.76 East: 3188594.27 (U.S. survey feet)

Type of monument: Harrison, 4" disk 'Section Corner'
 Depth: One inch below adjacent road surface

Indiana tie card references:
 IN02_T18NR2E01_80
 IN02_T18NR2E12_08

CORNER WITNESS DETAIL

SCALE 1" = 30'

- A - Mag nail set in NE side, power pole, 2.0' a.g., 19.0'
- B - Boone County witness mark, flush, 35.80'
- C - Boone County witness mark, flush, 42.07'

Boone County witness mark is a 3/8" diameter x 2' long rebar bearing a metal cap stamped "Boone County Witness Point."

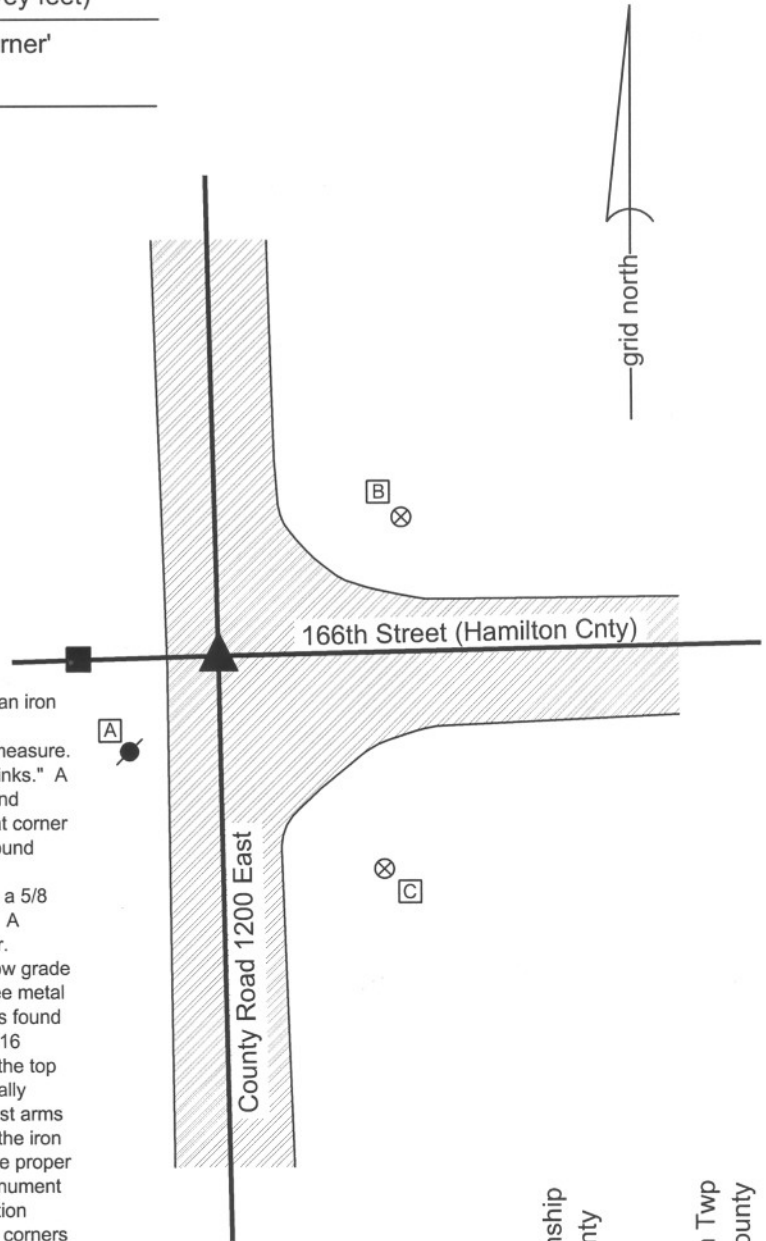
The harrison monument was set over a stone found and in place of an iron pin found.

A BCS record of March 15, 1888 states "Found point for corner by measure. A rock (pointed) 20.16.12 West 4 links. A rock marked W West 29 links." A BCS record of March 8, 1892 states "Reestablished by measuring and intersecting of lines. Reset Warrens rocks and marked + 20.16.12 at corner and witness rock W west 25 links." No recent BCS tie cards were found referencing this corner.

This corner was excavated on August 20, 2009. Prior to excavation a 5/8 inch rebar was visible in a hole in the asphalt 2 inches below grade. A railroad spike was found 1.3 feet east and 0.3 foot south of the rebar.

Excavation revealed a 1 inch diameter solid iron pin at 6 inches below grade 0.3 foot south and 0.1 foot west of the position of the rebar. All three metal monuments were removed during excavation. The record stone was found at 23 inches deep. With 9 inches of the stone exposed the stone is 16 inches N-S by 12 inches E-W. The etched "+" is partially visible on the top of the stone. It appears that the top of the stone has been partially chipped away, apparently removing the visibility of the north and west arms of the "+". It is likely that this damage was caused by the driving of the iron pin, as this monument was directly over the etched "+" and it was the proper length to have been touching the top of the stone. The harrison monument was set directly over the etched "+" and in the same horizontal position formerly occupied by the iron pin. The Boone and Hamilton County corners are coincident, as there is no range line offset at this corner.

This corner was originally established as a wood post in 1819.



Union Township
Boone County

Washington Twp
Hamilton County



Kenneth E. Hedge
 Kenneth E. Hedge, County Surveyor

James S. Swift
 James S. Swift, IN LS 20200054
 July 14, 2010

Section 1 T18N, R2E	Section 6 T18N, R3E
Section 12 T18N, R2E	Section 7 T18N, R3E

PHOTOGRAPHIC DOCUMENTATION

Date of photography: August 20, 2009

The area of excavation marked in pink paint, prior to excavation. View from the southeast. The 24 inch water main marked on the asphalt was apparently installed by boring techniques, even though the asphalt is clearly "saw-cut" above. Excavation revealed that the road bed appeared undisturbed to the depth of the stone.



View from the west, looking across the stone and east along 166th Street in Hamilton County.



For details and documentation, refer to related sheet "Section Corner Record."

View of the stone as first exposed.



View of the stone more fully exposed and brushed. View from above and north.



View of the stone from above and west.



SECTION CORNER RECORD

SE 150-1100

BOONE COUNTY SURVEYOR'S OFFICE

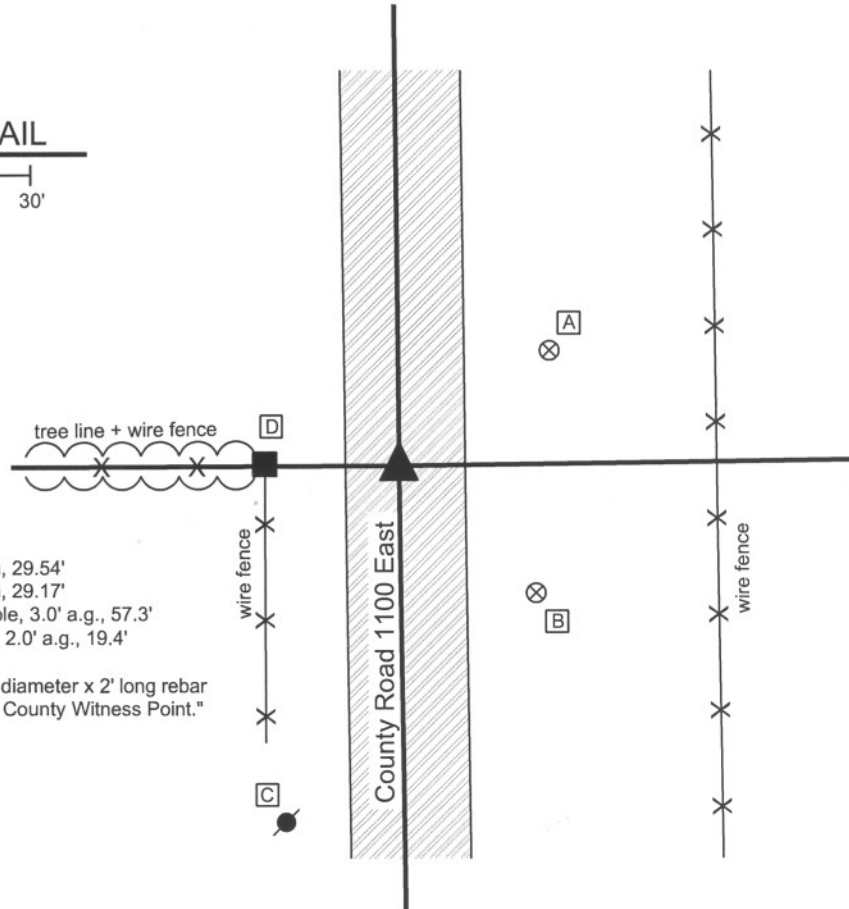
State Plane grid coordinates NAD83 (NSRS 2007):
North: 1739127.94 East: 3183324.60 (U.S. survey feet)

Type of monument: Harrison, 4" disk 'Section Corner'
Depth: One inch below adjacent road surface

Indiana tie card references:
IN02_T18NR2E11_36
IN02_T18NR2E12_44

CORNER WITNESS DETAIL

SCALE 1" = 30'
0' 15' 30'



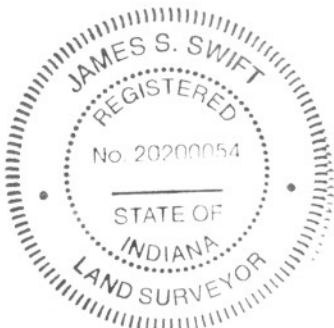
- A - Boone County witness mark, flush, 29.54'
- B - Boone County witness mark, flush, 29.17'
- C - Mag nail set in N.E. side power pole, 3.0' a.g., 57.3'
- D - Mag nail set in N. side wood post, 2.0' a.g., 19.4'

Boone County witness mark is a 3/8" diameter x 2' long rebar bearing a metal cap stamped "Boone County Witness Point."

The harrison monument was set over a stone found.

A BCS record of August 10, 1868 states "Re Established from stumps of both trees. Rock 16.13.12 in marked +." A BCS record of September 28 and October 14, 1891 states "Found rock of proper size but mark worn off by wagons remains of Elm to correspond with witness. Remarkd rock + and lowered it to level of road." A BCS tie card dated May 31, 1991 shows the corner as a road nail found. This corner was excavated on April 22, 2009. Prior to excavation a road nail was visible 2 inches deep in a hole in the asphalt. Excavation revealed the record stone found at 24 inches deep. The stone measures 13 inches N-S by 12 inches E-W by 16 inches tall. A vague but discernable etched "+" is on top of the stone. The mark is more discernable by feel than by sight. The harrison monument was set directly over the etched "+" on the stone. The road nail, removed during excavation, had been 0.3 foot north and 1.4 feet east of the stone.

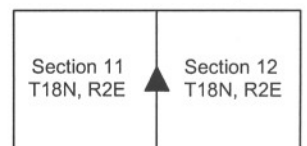
This corner was originally established as a wood post in July, 1821.



Kenneth E. Hedge
Kenneth E. Hedge, County Surveyor

James S. Swift
James S. Swift, IN LS 20200054
July 14, 2010

Union Township



PHOTOGRAPHIC DOCUMENTATION

Date of photography: April 22, 2009

View of the stone as first exposed.



View of the stone from above and west.



View of the stone and the wood end post on the east side of the road.



View of the stone from above and east.



View of the stone from above, showing the etched mark barely visible on the top of the stone.



For details and documentation, refer to related sheet "Section Corner Record."

SECTION CORNER RECORD

BOONE COUNTY SURVEYOR'S OFFICE

SE 150-1200

State Plane grid coordinates NAD83 (NSRS 2007):
 North: 1739294.16 East: 3188645.30 (U.S. survey feet)

Type of monument: Harrison, 4" disk 'Section Corner'
 Depth: flush with adjacent road surface

Indiana tie card references:
 IN02_T18NR2E12_44

CORNER WITNESS DETAIL

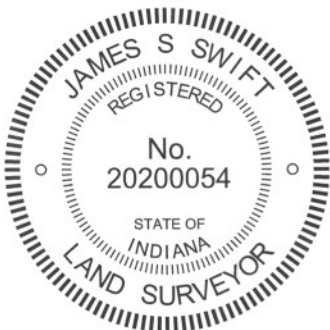
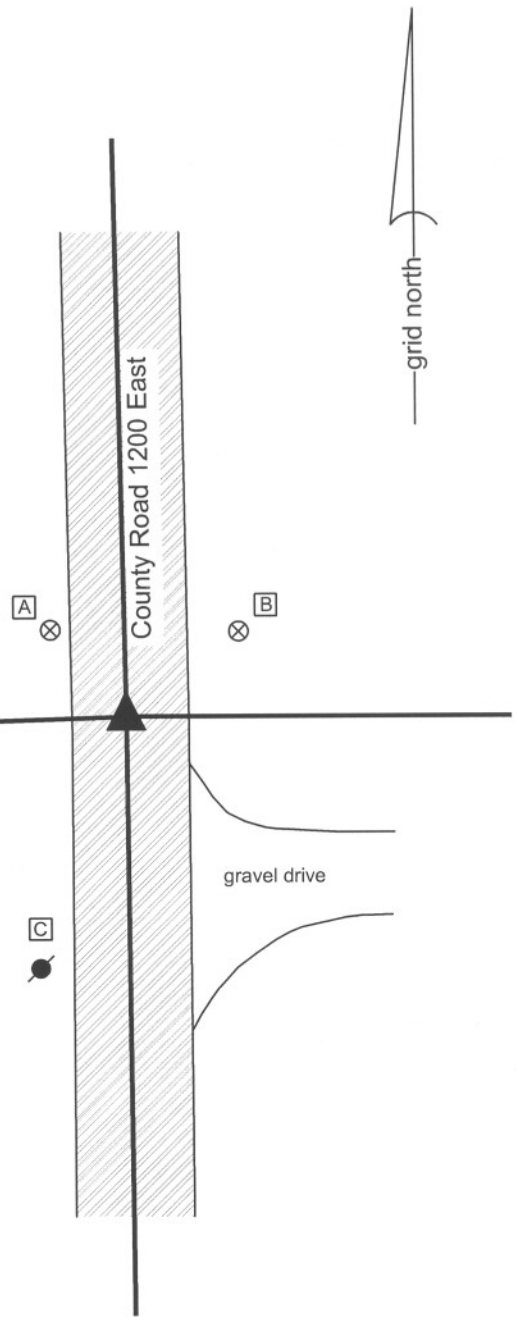
SCALE 1" = 30'

- A - Boone County witness mark, flush, 17.99'
- B - Boone County witness mark, flush, 22.03'
- C - Mag nail set in N. side power pole, 2' a.g., 40.29'

Boone County witness mark is a 3/8" diameter x 2' long rebar bearing a metal cap stamped "Boone County Witness Point."

Note: this corner is common to Boone and Hamilton Counties with no closing corner offset.

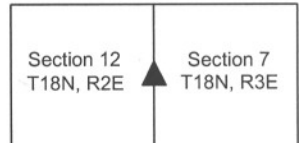
The harrison monument was set over a stone found. BCS records of 1851 and 1892 show this corner as the terminal point for measurements. Hamilton County records show this corner as a stone found in 1966 and 1982. The corner was excavated in August, 2009 and the stone was discovered at 4 inches deep. At that time, the railroad spike which had been present was removed and a "mag spike" monument was set over the stone as a temporary marker, until the planned paving of the roadway was complete. The roadway was not paved and on May 11, 2011, the corner was excavated again and a harrison monument was set over the stone. The harrison monument consists of a lid and "spacer" which total 4 inches tall. This monument was encased in concrete along with the top 6 inches of the stone. With the top 6 inches of the stone exposed, it measured 6 inches N-S by 7 inches E-W and was clearly much taller than the exposed 6 inches. The stone had a distinct high point which was held as the specific location of the corner. The previous railroad spike and mag spike had both been over this point. Although this corner is on a range line, there is not closing distance offset. The west quarter corner of section 7 is common with the east quarter corner of section 12.



Kenneth E. Hedge
 Kenneth E. Hedge, County Surveyor

James S. Swift
 James S. Swift, IN LS 20200054
 March 30, 2012

Union Twp Boone Cnty Hamilton County



PHOTOGRAPHIC DOCUMENTATION

Date of photography: August 18, 2009 & May 11, 2011

View of the stone as exposed on 8/18/2009.



View of the stone as exposed on 5/11/2011, immediately prior to being encased in concrete.



View from the south, looking across the stone and north on the county line road (8/18/2009).



View from the north, looking across the stone and south on the county line road (8/18/2009).



For details and documentation, refer to related sheet "Section Corner Record."

SECTION CORNER RECORD

SE 200-1100

BOONE COUNTY SURVEYOR'S OFFICE

State Plane grid coordinates NAD83 (NSRS 2007):
North: 1736486.01 East: 3183360.60 (U.S. survey feet)

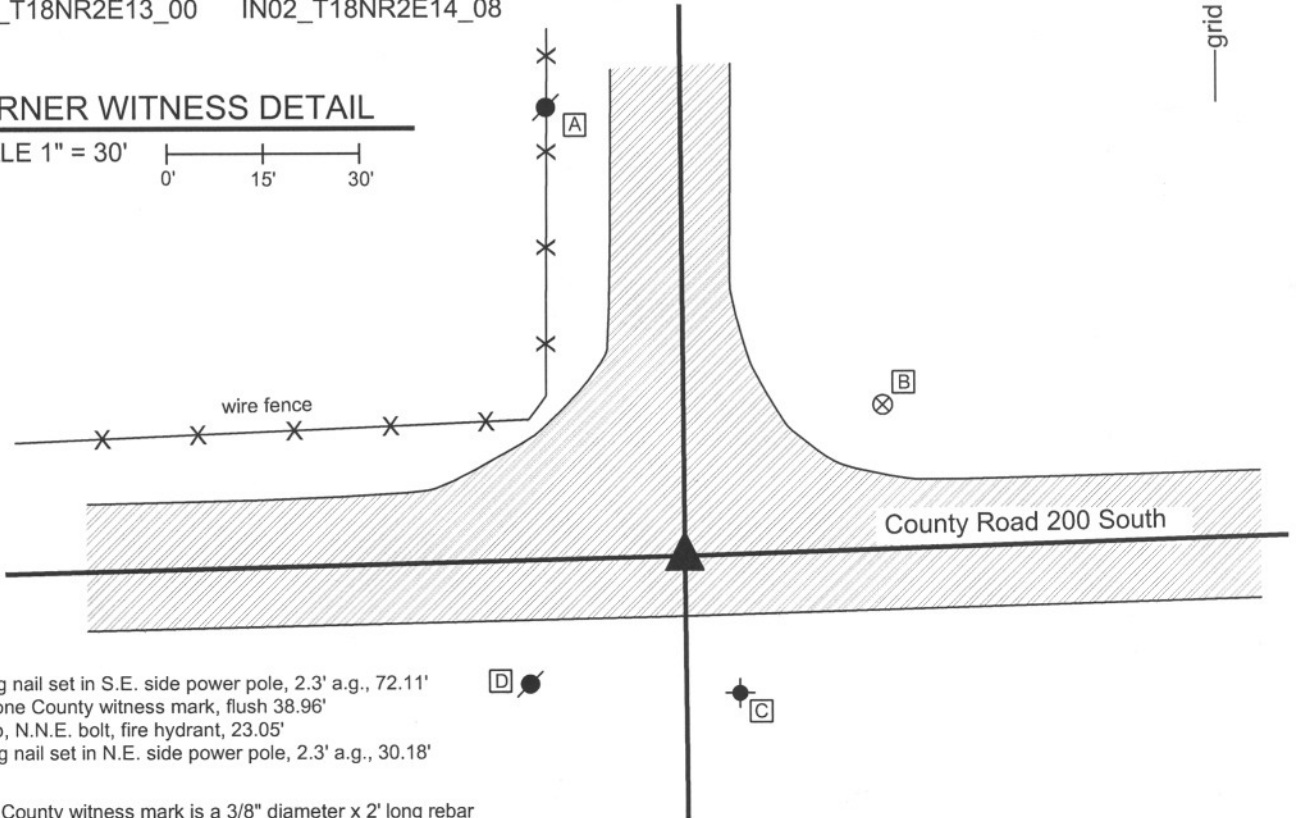
Type of monument: Harrison, 4" disk 'Section Corner'
Depth: One inch below adjacent road surface

Indiana tie card references:
IN02_T18NR2E11_80 IN02_T18NR2E12_72
IN02_T18NR2E13_00 IN02_T18NR2E14_08



CORNER WITNESS DETAIL

SCALE 1" = 30'
0' 15' 30'



- A - Mag nail set in S.E. side power pole, 2.3' a.g., 72.11'
- B - Boone County witness mark, flush 38.96'
- C - Top, N.N.E. bolt, fire hydrant, 23.05'
- D - Mag nail set in N.E. side power pole, 2.3' a.g., 30.18'

Boone County witness mark is a 3/8" diameter x 2' long rebar bearing a metal cap stamped "Boone County Witness Point."

The harrison monument was set in place of a railroad rail found. A BCS record of January 20, 1874 states "Re-established after sighting the lines intersecting here. Set a rock 17.13.10 +." A BCS tie card dated July 31, 1967 states "found stone." A BCS tie card dated May 31, 1991 shows the corner as being a 3/4 inch tie rod found. This corner was excavated on May 30, 2008. Prior to excavation a railroad rail was visible approximately 4 inches deep in a hole in the asphalt. Excavation centered on the railroad rail yielded an iron pipe (presumably the 3/4 inch tie rod called for the 1991 tie card) situated against the rail on the east side. Further excavation yielded no monuments. Though no specific documentation was found indicating the source of the rail, It is reasonable to conclude that the stone was removed and the rail installed in 1967, as was a common practice at that time. The harrison monument was set in the place of the now removed railroad rail. This corner was originally established as a wood post in July, 1821.



Kenneth E. Hedge
Kenneth E. Hedge, County Surveyor

James S. Swift
James S. Swift, IN LS 20200054

March 11, 2009

Union Township

Section 11 T18N, R2E	Section 12 T18N, R2E
Section 14 T18N, R2E	Section 13 T18N, R2E

SECTION CORNER RECORD

BOONE COUNTY SURVEYOR'S OFFICE

SE 200-1150

State Plane grid coordinates NAD83 (NSRS 2007):

North: 1736568.87 East: 3186014.77 (U.S. survey feet)

Type of monument: Harrison, 4" disk 'Section Corner'

Depth: One inch below adjacent road surface

Indiana tie card references:

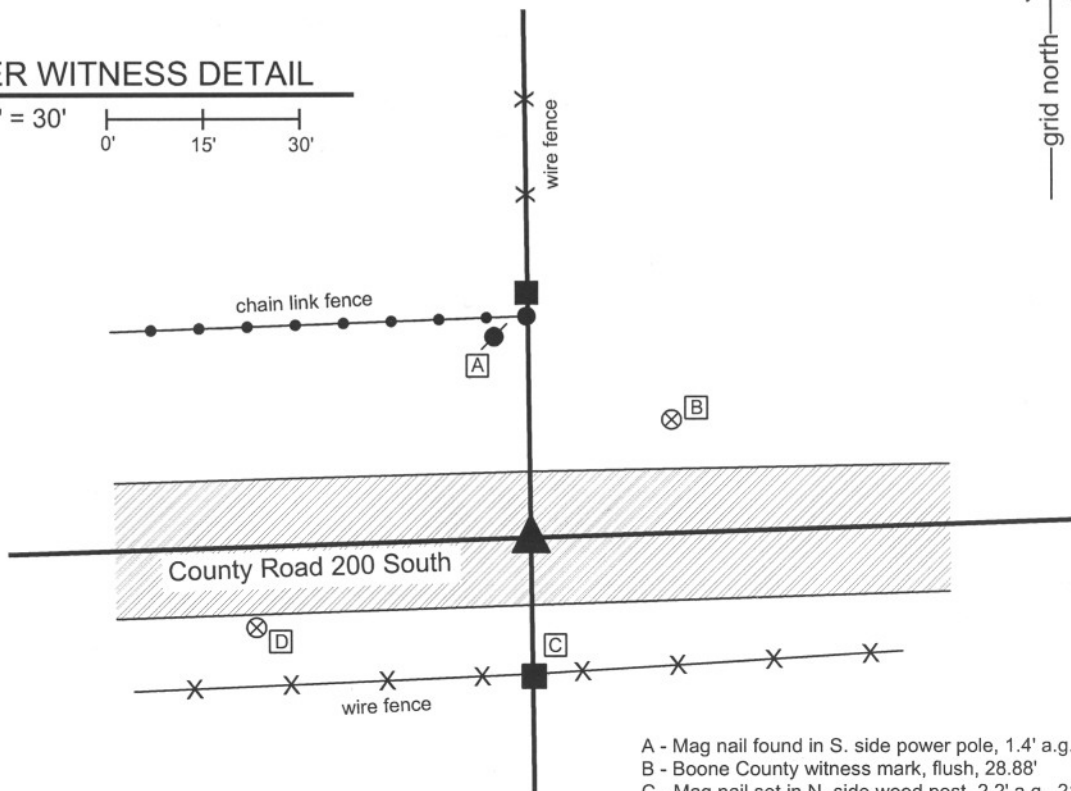
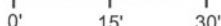
IN02_T18NR2E12_76

IN02_T18NR2E13_04



CORNER WITNESS DETAIL

SCALE 1" = 30'



- A - Mag nail found in S. side power pole, 1.4' a.g., 30.56'
- B - Boone County witness mark, flush, 28.88'
- C - Mag nail set in N. side wood post, 2.2' a.g., 21.28'
- D - Boone County witness mark, flush, 45.24'

Boone County witness mark is a 3/8" diameter x 2' long rebar bearing a metal cap stamped "Boone County Witness Point."

The Harrison monument was set in place of a railroad spike found.

No old BCS stone records were found for this corner. A BCS tie card dated June 5, 1991 calls the corner a railroad spike. This corner was excavated on June 2, 2008. Prior to excavation, the railroad spike was visible 2 inches below grade in a hole in the asphalt. This spike fits with the remaining 1991 ties and is located in the center of the county road in line with the old fence to the north. Excavation of an area 4 feet N-S by four feet E-W centered on the spike yielded no more monumentation. No stone was found. The Harrison monument was set in place of the now removed railroad spike. This corner was originally established as a wood post in July, 1821.

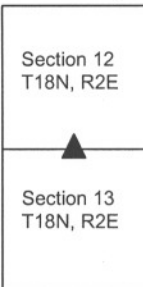


Kenneth E. Hedge
 Kenneth E. Hedge, County Surveyor

James S. Swift
 James S. Swift, IN LS 20200054

March 11, 2009

Union Township



SECTION CORNER RECORD

SE 200-1200

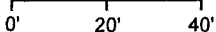
BOONE COUNTY SURVEYOR'S OFFICE

State Plane grid coordinates NAD83 (2011):
 North: 1736651.11 East: 3188671.38 (U.S. survey feet)

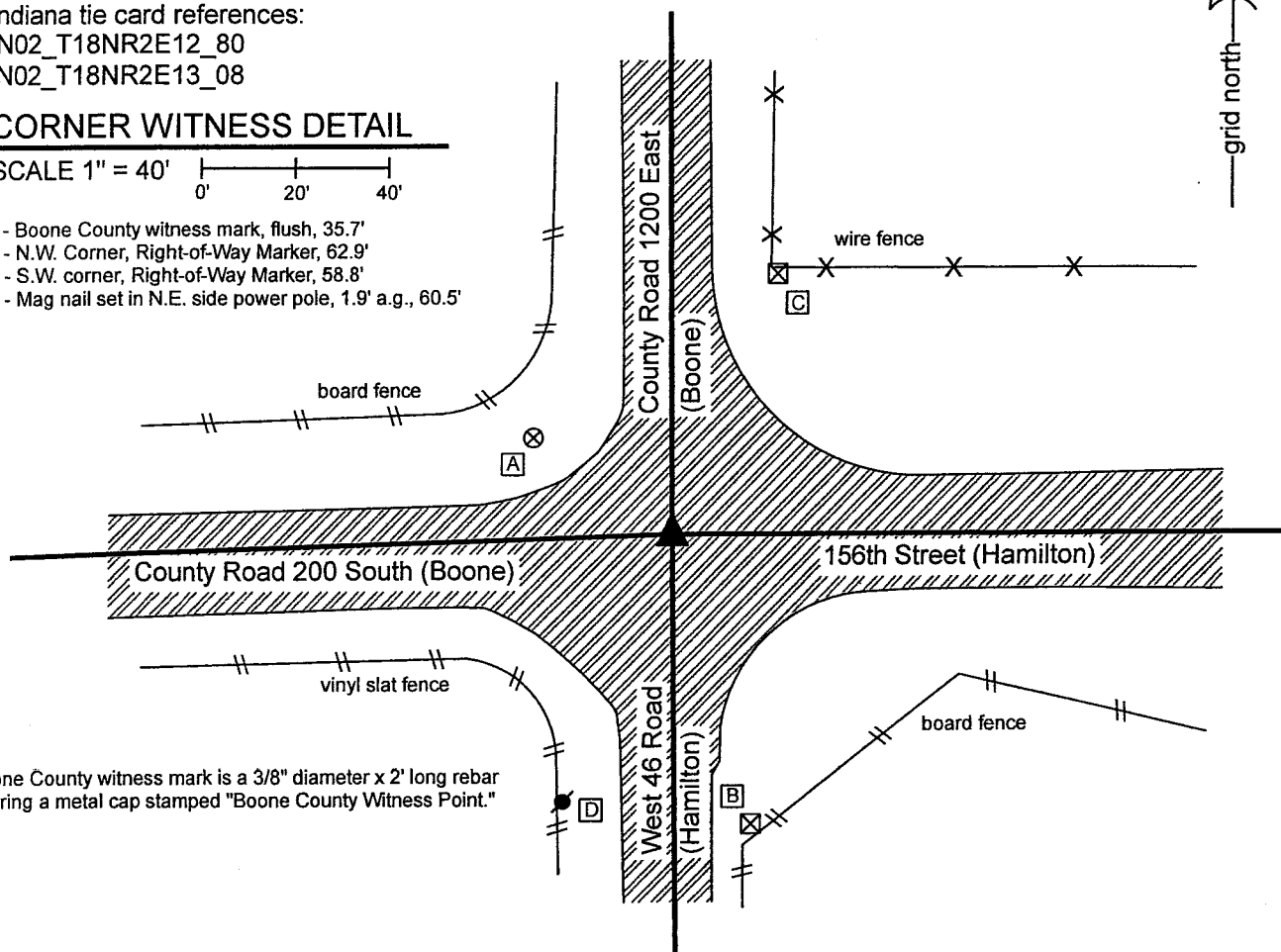
Type of monument: Harrison, 4" disk 'Section Corner'
 Depth: Flush with road surface

Indiana tie card references:
 IN02_T18NR2E12_80
 IN02_T18NR2E13_08

CORNER WITNESS DETAIL

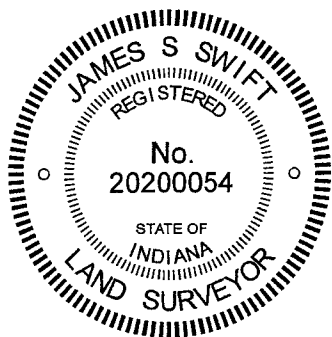
SCALE 1" = 40'


- A - Boone County witness mark, flush, 35.7'
- B - N.W. Corner, Right-of-Way Marker, 62.9'
- C - S.W. corner, Right-of-Way Marker, 58.8'
- D - Mag nail set in N.E. side power pole, 1.9' a.g., 60.5'



Boone County witness mark is a 3/8" diameter x 2' long rebar bearing a metal cap stamped "Boone County Witness Point."

The Harrison monument was found in place in the position of a Harrison monument set by this office in 2006, and held as marking the corner. A BCS record dated August 17, 1869 states, with respect to this corner, "Found from stump of Oak and Reestablished. Drove stake under a rock 16.13.6 +." A tie card of unknown origin dated September 20, 1965 states "No Stone. Found I.P set." Excavation by contractors working for the Boone County Surveyor's Office in 2006 did not reveal the stone called in the 1869 record but did reveal an iron pipe, which was believed to be the monument called in the 1965 record. A Harrison monument was set at that time over the iron pipe. The current Hamilton County tie card for this corner, November 4, 2020, shows corner as a Harrison monument with references to an iron pin in 1965, a railroad spike found in 1991 and a Harrison monument found in 2009. The 2006 excavation was accepted as sufficient and no further excavation was performed at this corner. The Harrison monument is held as set in 2006. This corner was originally established as a wood post in 1820. Although this corner is on a range line, there is no offset. The Boone and Hamilton County corners represent a common corner for the four adjacent sections.



Kenneth E. Hedge
 Kenneth E. Hedge, County Surveyor

James S. Swift
 James S. Swift, IN LS 20200054
 February 17, 2020

Union Township
 Boone County

Boone County	Hamilton County
Section 12 T18N, R2E	Section 7 T18N, R3E
Section 13 T18N, R2E	Section 18 T18N, R3E