

# SECTION CORNER RECORD

SW 100-000

## BOONE COUNTY SURVEYOR'S OFFICE

State Plane grid coordinates NAD83 (CORS96):

Corner 1: North: 1740288.14 East: 3124864.58 (U.S. survey feet)

Corner 2: North: 1740489.40 East: 3124863.85 (U.S. survey feet)

Type of monument:

Corner 1: Harrison, 4" disk 'Section Corner' (3 inches above adjacent ground)

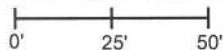
Corner 2: 36" length, 5/8 inch rebar with metal cap stamped 'Boone County Surveyor' (flush)

Indiana tie card references:

IN02\_T18NR1W01\_80 IN02\_T18NR1E06\_72

IN02\_T18NR1W12\_08 IN02\_T18NR1W07\_00

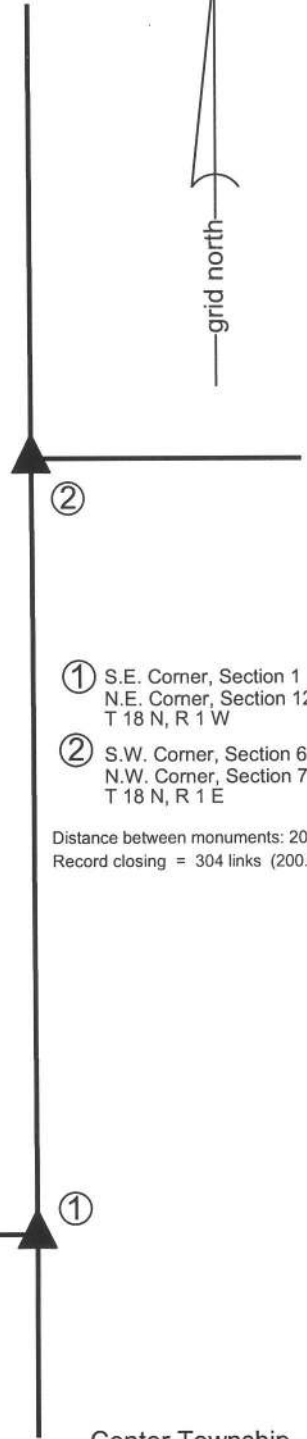
### CORNER WITNESS DETAIL

SCALE 1" = 50' 

The corners fall in an area of tilled ground where no reliable witness marks are available.

The harrison monument at corner 1 was set in place of a rebar bearing a plastic cap stamped "Weihe Engr 0012." The rebar at corner 2 was set on the range line at a distance of 201.26 feet north of corner 1, which position is also at the east edge of the former position of an old wood corner post. A survey by Woolpert recorded in Survey Book 2, pages 12-13, in the Boone County Recorder's Office shows corner 2 as being monumented by a stone and shows no monument found at corner 1. The survey states that the distance between the two corners was computed based on an index factor of 1.0031 used to adjust the original closing distance of 304 links (200.64 feet). In the spring of 2012 the capped rebar was found ostensibly marking corner 1 and various evidence was found in the vicinity of corner 2, including the base of an old wood corner post and several rocks. None of the rocks were positively identifiable as a section corner stone. It was not clear which stone may have been held for the Woolpert survey and it appeared that some disturbance may have taken place since that survey was performed in 1995. It was observed that by holding the rebar as corner 1 and placing corner 2 on the range line (defined by corner 1 and the standard corner 1/2 mile north) at the indexed distance of 201.26 feet reported on the Woolpert survey, corner 2 would fall at the east edge of the found remains of the old corner post. These positions both fit well with the Woolpert survey relative to other corners shown on that survey.

In the fall of 2012 the fence line and tree line marking the lines to the north and east of corner 2 were removed by the current farmer for agricultural purposes. The various rocks and post at or near corner 2 were removed and a steel post was set in the position of the old wood corner post. After this work was completed, the two corners were monumented by Boone County Surveyor's Office. At corner 1 the rebar was removed and replaced with a harrison monument in the same position. At corner 2 a 36 inch length of 5/8 inch diameter rebar was set and capped with a metal cap stamped 'Boone County Surveyor.' This monument is 0.7 foot east of the steel post which was set in the position of the old wood corner post.

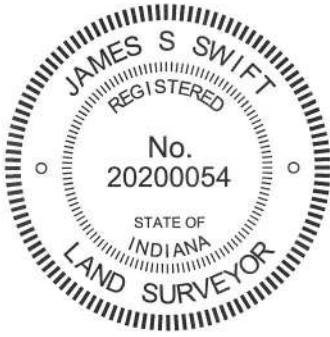


②

- ① S.E. Corner, Section 1  
N.E. Corner, Section 12  
T 18 N, R 1 W
- ② S.W. Corner, Section 6  
N.W. Corner, Section 7  
T 18 N, R 1 E

Distance between monuments: 201.26'  
Record closing = 304 links (200.64')

①



*Kenneth E. Hedge*  
Kenneth E. Hedge, County Surveyor

*James S. Swift*  
James S. Swift, IN LS 20200054  
April 9, 2013

Section 1 T18N, R1W	Section 6 T18N, R1E
Section 12 T18N, R1W	Section 7 T18N, R1E

# SECTION CORNER RECORD

SW 100-050

## BOONE COUNTY SURVEYOR'S OFFICE

State Plane grid coordinates NAD83 (2011):

North: 1740231.36 East: 3122258.08 (U.S. survey feet)

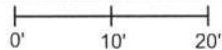
Type of monument: Harrison, 4" disk 'Section Corner'

Depth: Five inches above adjacent ground

Indiana tie card references:

IN02\_T18NR1W01\_76 IN02\_T18NR1W12\_04

### CORNER WITNESS DETAIL

SCALE 1" = 20' 

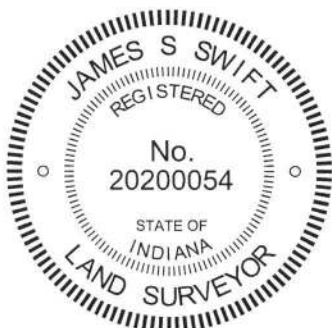
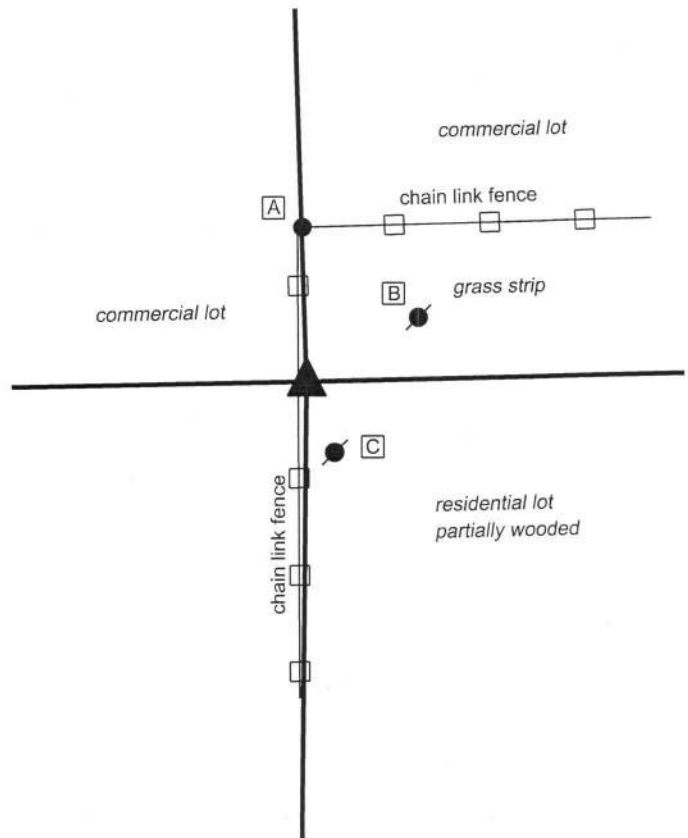
- A - South edge, chain link corner post, flush, 16.0'
- B - Mag nail set in S.W. side power pole, 1' a.g., 12.6'
- C - Mag nail set in N.W. side power pole, 2' a.g., 7.1'



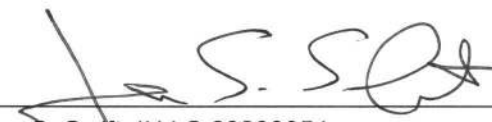
The Harrison monument was set over the remains of a wood corner post.

A BCS record of August 27, 1886 states, with respect to this corner, "Reestablished from Bl Oak stump roots yet there S 35 W, 16 links dist, and in digging about 14 inches underground found point of an old stake. Set Rock 16x14x12 + top." A BCS tie card dated February 26, 1992 shows the corner as and old fence post in line with fence to the east and slightly east of a N-S chain link fence. The tie card states "no stone found." This wood post has been held as marking the corner for many surveys.

This corner was excavated on May 24, 2018. Prior to excavation, the wood post shown on the 1992 tie card was found standing, though not in good condition. The post falls slightly east of a chain link fence enclosing an industrial property to the west and is in line with a tree line to the east. The post yet had a brace post to the east and fencing cut-off toward the east. Excavation around the base of the post revealed various rubble and junk, including numerous pieces of glass, found at depths of up to 18 inches below grade, indicating substantial previous disruption of the area. The stone called for in the 1886 record was not found, nor was any other evidence of the corner beyond the post. Excavation around the base of the post revealed that it is a 6 inch by 6 inch locust post. The post was accepted as representing the best available evidence of the corner and was held as marking the corner. The top of the post was broken off from the base at approximately 6 inches below grade and the base of the post was left in place. The top portion of the remaining base of the post was encased in concrete and a Harrison monument was set over the remains of the post. This corner was originally established as a wood post in 1820.



  
 Kenneth E. Hedge, County Surveyor

  
 James S. Swift, IN LS 20200054  
 May 30, 2018

Center Township

Section 1  
T18N, R1W



Section 12  
T18N, R1W

# SECTION CORNER RECORD

SW 100-100

## BOONE COUNTY SURVEYOR'S OFFICE

State Plane grid coordinates NAD83 (NSRS 2007):

North: 1740184.01 East: 3119513.14 (U.S. survey feet)

Type of monument: Harrison, 4" disk 'Section Corner'

Depth: One inch above adjacent ground

Indiana tie card references:

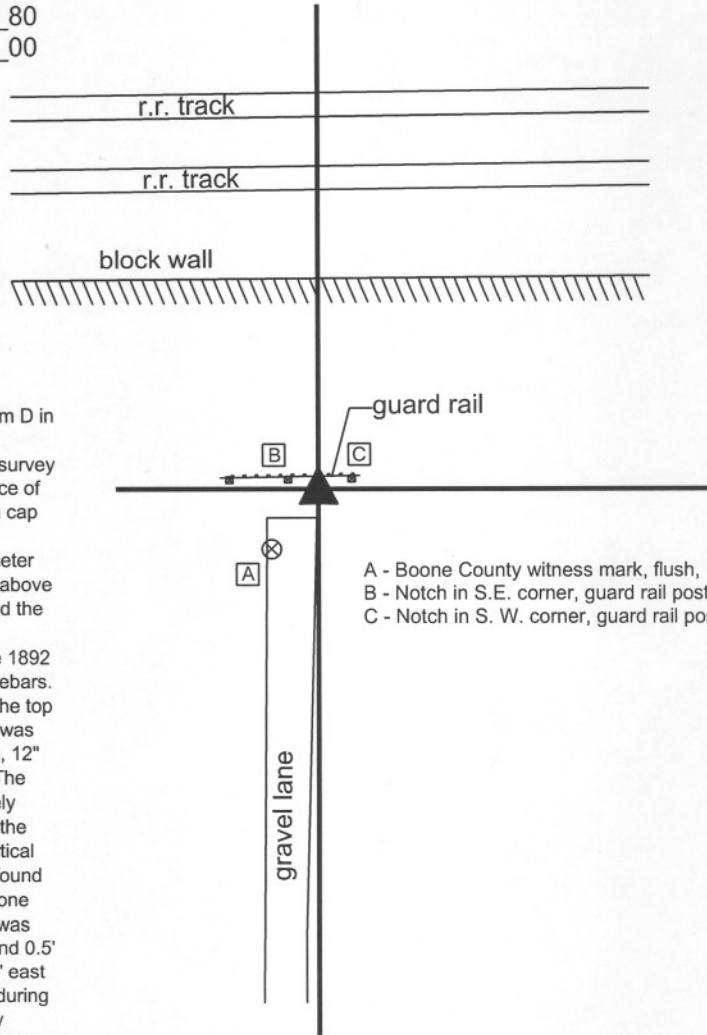
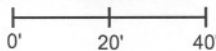
IN02\_T18NR1W01\_72      IN02\_T18NR1W02\_80

IN02\_T18NR1W11\_08      IN02\_T18NR1W12\_00



### CORNER WITNESS DETAIL

SCALE 1" = 40'



- A - Boone County witness mark, flush, 15.9'
- B - Notch in S.E. corner, guard rail post, 6.3'
- C - Notch in S. W. corner, guard rail post, 6.7'

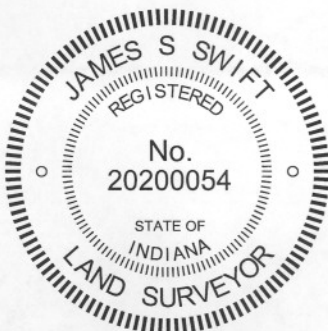
A BCS record dated January 18, 1892 states "Reestablished by running intersecting lines at a pt 25 links East of a straight line from D in this Section to D in Section 11. Set Rock + 22.17.12 at corner."

Preliminary surveys for the Lebanon Business Park, including a survey by Woolpert, Inc. recorded in Survey Book 2, page 14 in the Office of the Boone County Recorder, show the corner as an iron pin with cap found.

Investigation and excavation of this corner yielded two 5/8" diameter rebars and the record stone found. The two rebars were visible above the surface prior to excavation. One bore the cap "Woolpert" and the other bore a cap, the markings on which were not identifiable.

Excavation on August 4, 2010 yielded the stone described in the 1892 record found adjacent to and slightly south and west of the two rebars. The stone was found at 9 inches below the top of the ground. The top of the stone appears to have been chipped off and the "+" mark was not found. The stone measures 21" tall on the vertical west side, 12" E-W at the widest point and 19 inches N-S at the widest point. The stone is approximately triangular in shape and difficult to precisely measure. Given the similarity of the measured dimensions with the record dimensions and the characteristics of the stone being vertical with a distinct high point, fitting with the characteristics of other found stones which were set by County Surveyors in the 1800s, the stone was accepted as being the record stone described in 1892 and was held as marking the corner. The Woolpert rebar was 0.2' east and 0.5' north of the top high point of the stone. The other rebar was 0.2' east and 0.2' north of the top high point. Both rebars were removed during excavation. The harrison monument was set in concrete directly above the top high point of the stone, with the top 5 inches of the stone encased in concrete.

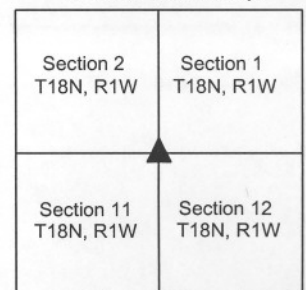
This corner was originally established as a wood post in 1820.



*Kenneth E. Hedge*  
Kenneth E. Hedge, County Surveyor

*James S. Swift*  
James S. Swift, IN LS 20200054  
September 22, 2011

Center Township



PHOTOGRAPHIC DOCUMENTATION

Date of photography: August 4, 2010

The stone and two rebars. View from the east.



The stone and two rebars. View from the south.



For details and documentation, refer to related sheet "Section Corner Record."

# SECTION CORNER RECORD

SW 150-100

## BOONE COUNTY SURVEYOR'S OFFICE

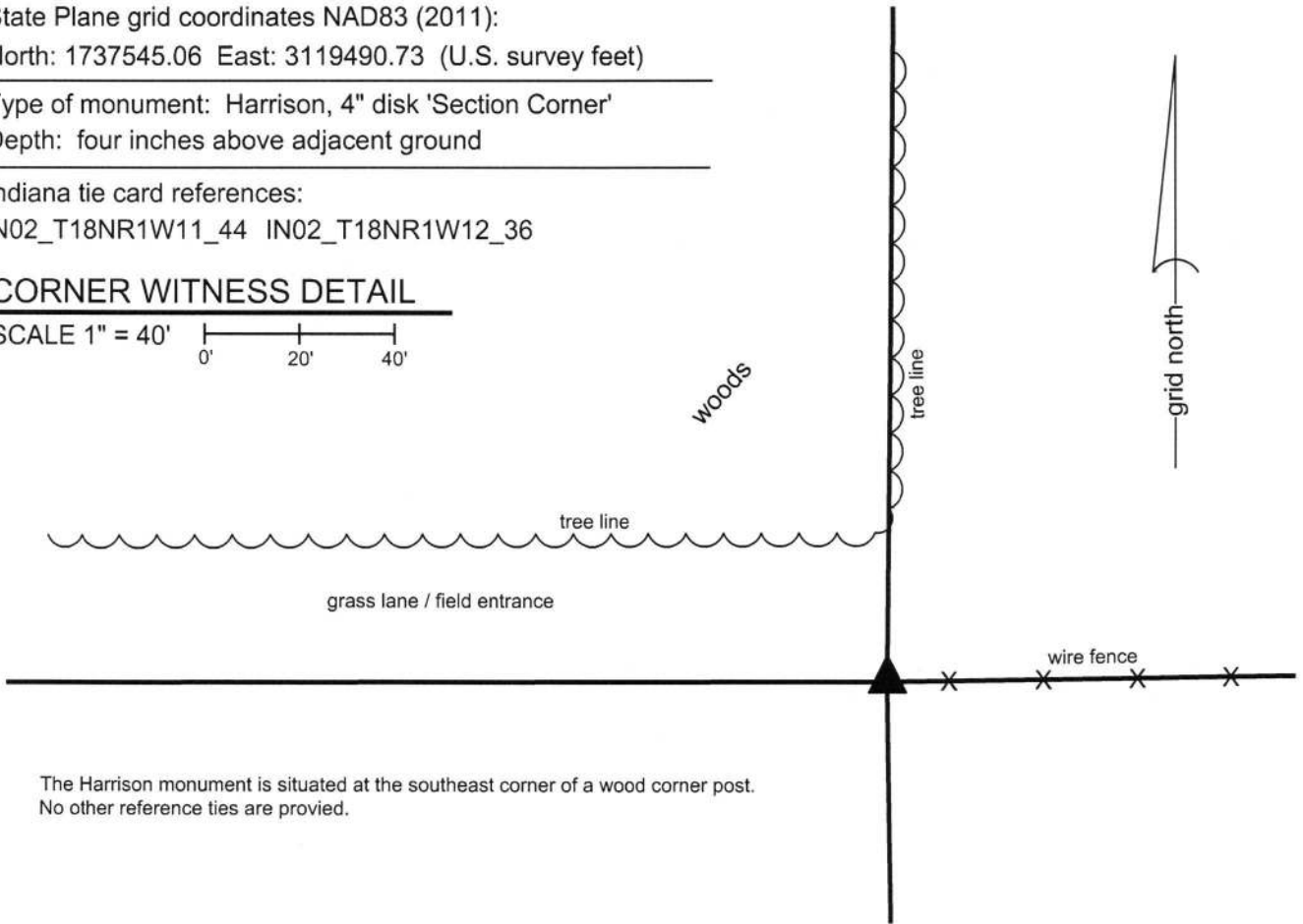
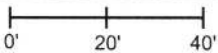
State Plane grid coordinates NAD83 (2011):  
North: 1737545.06 East: 3119490.73 (U.S. survey feet)

Type of monument: Harrison, 4" disk 'Section Corner'  
Depth: four inches above adjacent ground

Indiana tie card references:  
IN02\_T18NR1W11\_44 IN02\_T18NR1W12\_36

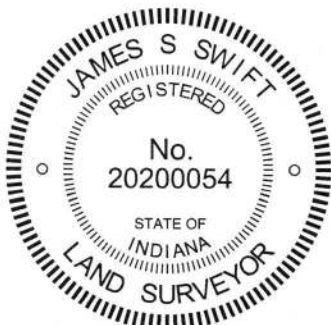
### CORNER WITNESS DETAIL

SCALE 1" = 40'




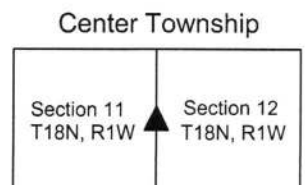
The Harrison monument is situated at the southeast corner of a wood corner post.  
No other reference ties are provided.

The Harrison monument was set in place of a stone found.  
A BCS record dated April 24, 1869 states, with respect to this corner, "Reest from trees. Rock 13,12,8 +." No BCS tie cards were found referencing this corner.  
A stone was found at this corner during recon in October, 2016. Full excavation was performed on October 14, 2016. The stone was situated five inches below grade at the southeast corner of an ancient wood corner post. As found, the stone was 13 inches tall by 8 inches E-W by 12 inches N-S. The stone had a flat top with no discernable marks, as found. The stone was removed and a distinct etched "+" mark was found on the bottom of the stone. It appeared in the field that the stone was upside-down from the orientation in which it would have been likely set. Typically the mark on a stone is found either on the top or side, rarely on the bottom. It is possible that the stone was previously disturbed and reset with the mark to the bottom, which would indicate that the stone may not be in its original position. This is not known as a fact. The stone was held as marking the corner. The center of the top of the rock, as originally found, was held as the specific location of the corner. A Harrison monument was set at this position. This corner was originally established as a wood post in 1820.



  
Kenneth E. Hedge, County Surveyor

  
James S. Swift, IN LS 20200054  
March 23, 2017



PHOTOGRAPHIC DOCUMENTATION

Date of photography: October 14, 2016

The stone as found at the base of the post.



The wood post with the stone exposed at the base.



For details and documentation, refer to related sheet "Section Corner Record."

The stone removed from the ground, situated in same orientation as originally found.



The stone with etched "+" mark on top. As found this mark was on the bottom of the stone.



The stone with mark on top shown adjacent to the Harrison monument set in its place.



# SECTION CORNER RECORD

SW 200-000

## BOONE COUNTY SURVEYOR'S OFFICE

State Plane grid coordinates NAD83 (2011):

North: 1734990.59 East: 3124895.92 (U.S. survey feet)

North: 1735188.75 East: 3129897.92 (U.S. survey feet)

Type of monument: Harrison, 4" disk 'Section Corner'

Depth: One inch below adjacent road surface

Indiana tie card references:

IN02\_T18NR1W12\_80 IN02\_T18NR1E07\_72

IN02\_T18NR1W13\_08 IN02\_T18NR1E18\_00

### CORNER WITNESS DETAIL

SCALE 1" = 60'

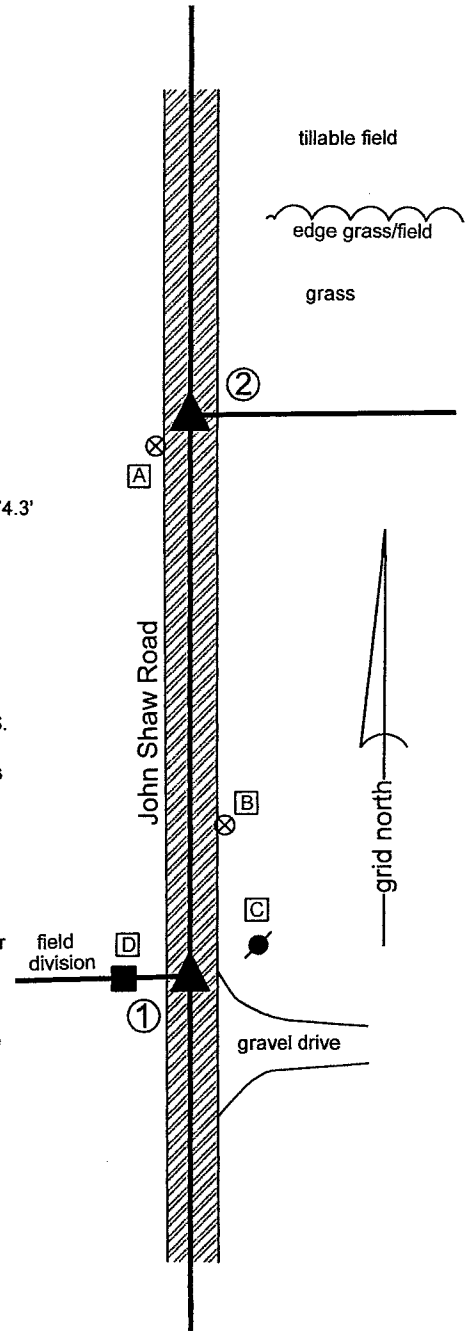
- A - Boone County witness mark, flush  
165.1' to corner 1, 14.5' to corner 2
- B - Boone County witness mark, flush  
48.1' to corner 1, 127.9' to corner 2
- C - Mag nail set in W. side power pole, 2' a.g.  
21.3' to corner 1, 165.4' to corner 2
- D - Mag nail set in E. side wood end post, 2' a.g.  
20.0' feet to corner 1, 175.7' to corner 2

① S.E. Corner, Section 12  
N.E. Corner, Section 13  
T 18 N, R 1 W

② S.W. Corner, Section 7  
N.W. Corner, Section 18  
T 18 N, R 1 E

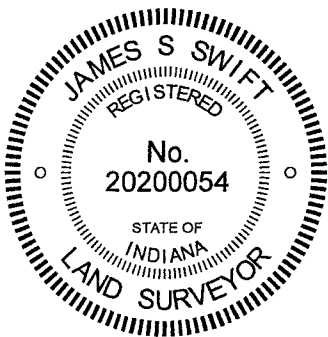
Distance between monuments: 174.3'

Original federal closing distance:  
264 links = 174.24'



The Harrison monument at Corner 1 was set in place of a vertical section of railroad rail found. The Harrison monument at Corner 2 was set adjacent to the position of a rebar found. A BCS record of May 23, 1866 states, with respect to Corner 1, "Reest. found by measure 264 links S. of cor. of Sects 7 & 18 found stumps of trees. Rock 22.12.9 + on W. side. No specific descriptions of Corner 2 were found in the BCS Surveyor's Record beyond the original establishment of the corner as a wood post in 1820, 264 links N. of the wood post set at Corner 1 in 1819. A BCS tie card dated February 26, 1992 shows Corner 1 as a railroad rail found. Excavation was performed at Corner 1 on May 6, 2013. Prior to excavation, a nail was found at 4 inches below grade in the center of the road, in-line with a wood post on the west side of the road. Excavation revealed a vertical section of railroad rail found at 7 inches deep, directly below the nail. Further excavation to 2.5 feet north, west and south and 4 feet east of the rail did not reveal more evidence of the corner. The stone called in the 1866 record was not found. A possible explanation for this may be that the stone was found and removed when the rail was set. No record was found to indicate when the rail was set, though it was most likely set in the late 1960s or early 1970s and it is known that BCS crews of that era often removed stones, if found, and replaced them with rails. Another explanation may be that, due to mixture of sand and rocky material found at the bottom of the road bed, this area appears that it was wet during the wagon road era and the stone may have been removed when the road bed was built up. The rail was accepted as the best available evidence of Corner 1 and replaced with a Harrison monument in the same position on May 7, 2013. Excavation at Corner 2 on May 7, 2013 revealed a one-foot length of 5/8 inch rebar at 6 inches deep and a fragment of wood stake found near the bottom of the road bed. The fragments of the stake were ill defined with respect to precise position. Excavation of a five-foot square area centered on the rebar did not reveal further evidence of this corner. The rebar, being at the 264 link offset distance from the rail at Corner 1, was held to define the north-south dimension of Corner 2. A mag spike was set in place of the rebar temporarily on May 7, 2013. This spike was replaced with a Harrison monument set on the range line as defined by Corner 1 and the east quarter corner of section 12 (see BCS Corner SW 150-000) on July 14, 2016. This position is 0.1 foot west of the position of the rebar originally found.

Corner 1 was originally set as a wood post in 1819. Corner 2 was originally set as a wood post in 1820.



*Kenneth E. Hedge*  
Kenneth E. Hedge, County Surveyor

*James S. Swift*  
James S. Swift, IN LS 20200054

March 9, 2021

Center Township

