

SECTION CORNER RECORD

NW 400-100

BOONE COUNTY SURVEYOR'S OFFICE

State Plane grid coordinates NAD83 (2011):

North: 1766779.30 East: 3119479.23 (U.S. survey feet)

Type of monument: Harrison, 4" disk 'Section Corner'

Depth: Two inches above adjacent ground

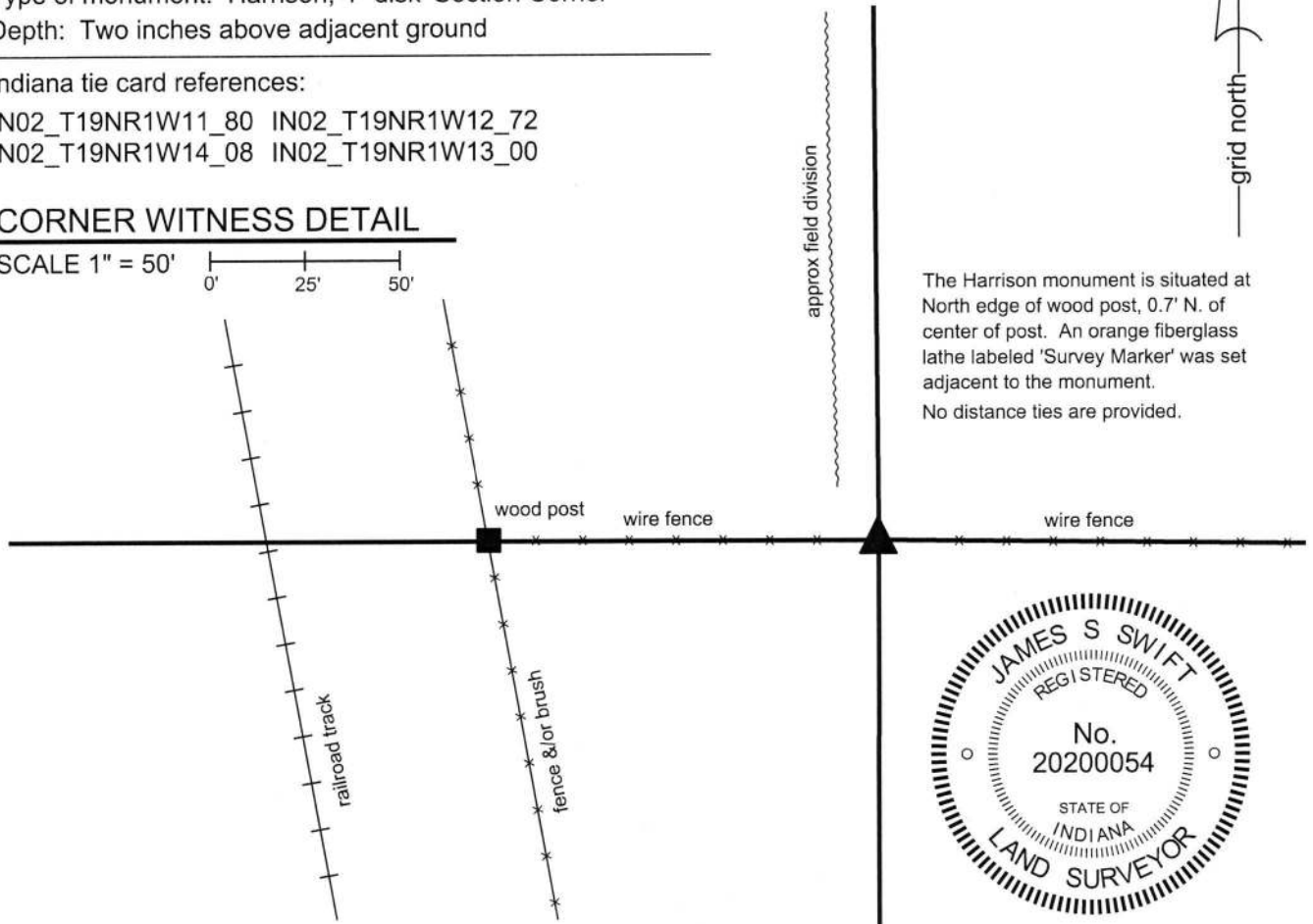
Indiana tie card references:

IN02_T19NR1W11_80 IN02_T19NR1W12_72

IN02_T19NR1W14_08 IN02_T19NR1W13_00

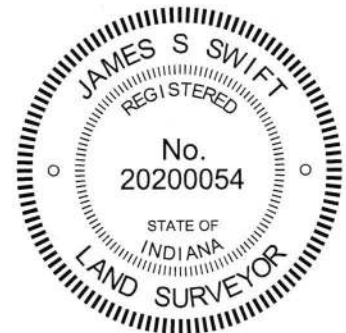
CORNER WITNESS DETAIL

SCALE 1" = 50'



The Harrison monument is situated at North edge of wood post, 0.7' N. of center of post. An orange fiberglass lathe labeled 'Survey Marker' was set adjacent to the monument.

No distance ties are provided.



The Harrison monument was set in place of a stone found.

No specific descriptions of this corner were found in the Boone County Surveyor's Record beyond the original establishment of the corner as a wood post in 1822. The corner is mentioned as the terminal point for measurements in records of 1834, 1836, 1850, and 1857, indicating that a monument of some form was present from which to measure at those times. No recent BCS tie cards were found referencing this corner. A recent survey by Ronald Wharry recorded as Instrument 201600012315 shows the corner as a wood post.

This corner was excavated on November 28-29, 2017. The wood post referenced on the Wharry survey was found in an east-west fence. The post had braces on the east and west sides of the post. The position of the post fits with the relative positions of proximate corners and fits with calls for the adjacent railroad right-of-way in the deed descriptions for neighboring properties to the west and southwest. The post appeared to be old but not ancient.

Excavation around the post revealed numerous small rocks and two larger rocks. One rock along the northeast edge of the post was found to be situated in a haphazard orientation, not quite horizontal and oriented off cardinal directions. Another rock found at 6 inches deep along the north edge of the post bore the characteristics of corner stones found marking other corners throughout the county, being clearly vertical and oriented in cardinal directions. The stone was 11 inches tall, 7 inches east-west by 6 inches north-south with a distinct high point. The south side of the stone was flat and vertical. The stone could be interpreted as acting as a brace to the post but other brace rocks were not found around the post and the stone was not actually touching the post, being slightly north of the north edge of the post. The stone appeared in the field to be intended to mark the position of the corner and was held as such. The stone was removed and replaced with a Harrison monument in the same position. The monument is situated at the north edge of the post, 0.7 foot north of the center of the post.

Kenneth E. Hedge
Kenneth E. Hedge, County Surveyor

James S. Swift
James S. Swift, IN LS 20200054

December 13, 2017

Washington Twp

Center Twp

Section 11 T19N, R1W	Section 12 T19N, R1W
Section 14 T19N, R1W	Section 13 T19N, R1W

SECTION CORNER RECORD

NW 400-150

BOONE COUNTY SURVEYOR'S OFFICE

State Plane grid coordinates NAD83 (CORS96):

North: 1766778.10 East: 3116826.22 (U.S. survey feet)

Type of monument: Harrison, 4" disk 'Section Corner'

Depth: one inch below adjacent road surface

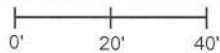
Indiana tie card references:

IN02_T19NR1W11_76

IN02_T19NR1W14_04

CORNER WITNESS DETAIL

SCALE 1" = 40'

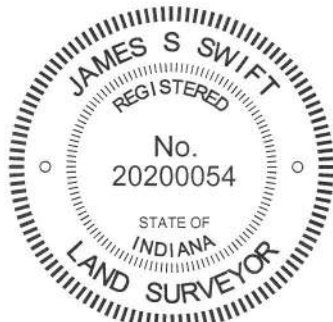
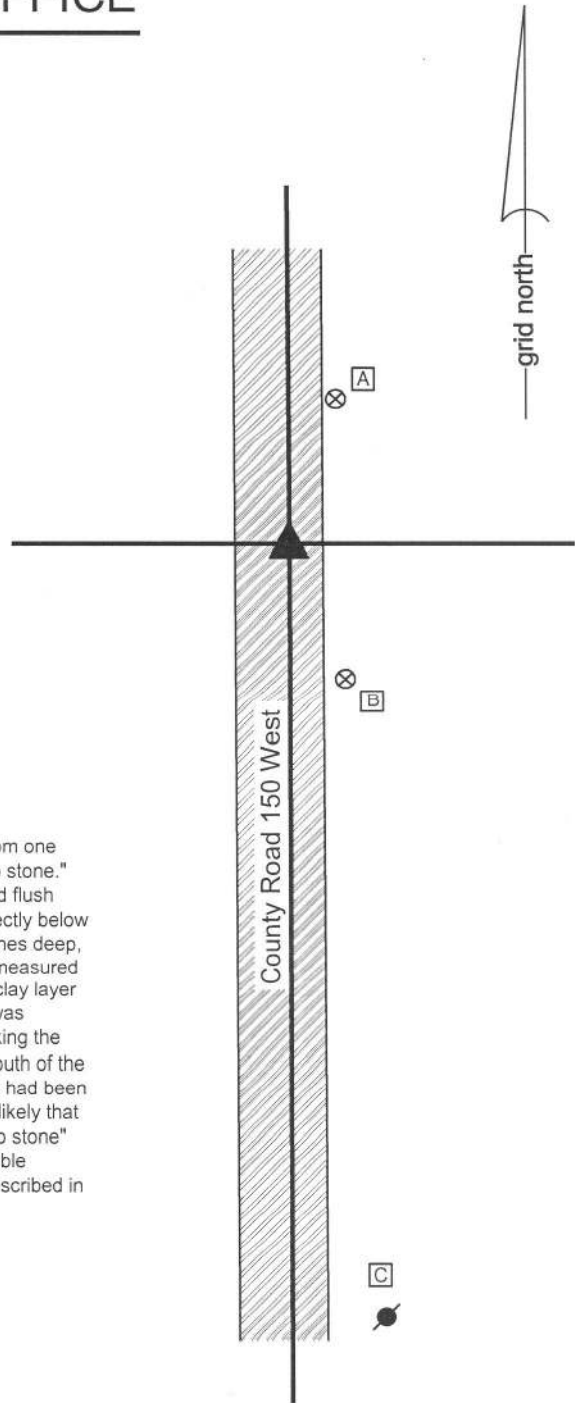


- A - Boone County witness mark, flush, 31.8'
- B - Boone County witness mark, flush, 30.6'
- C - Mag nail set in N.W. side power pole, 2' a.g., 161.9'

Boone County witness mark is a 3/8" diameter x 2' long rebar bearing a metal cap stamped "Boone County Witness Point."

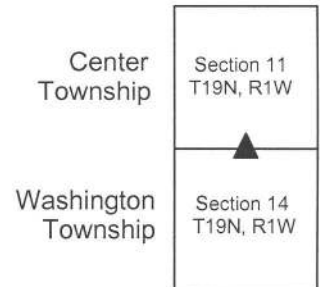
The Harrison monument was set over a stone found.

A BCS record dated March 30-31, 1866 states, with respect to this corner, "Reest'd from one tree. Set Rock 16x10x8 marked + on top." A BCS tie card dated July 1968 states "No stone." This corner was excavated on June 6, 2014. Prior to excavation, a mag nail was found flush with the surface of the road. Excavation revealed a vertical section of railroad rail, directly below the nail. Further excavation revealed the stone described in the 1866 record at 15 inches deep, north and east of the nail and rail. With the top 9 inches of the stone exposed, it was measured to be 10 inches N-S by 8 inches E-W. The stone was vertical, fully embedded in the clay layer below the road and an etched "+" mark was visible on the top, north side. The stone was accepted as being the same stone described in the 1866 record and was held as marking the corner. A Harrison monument was set over the top, high point of the stone, slightly south of the etched "+" mark on the north side. The nail and rail, both removed during excavation, had been 2.4 feet south and 2.7 feet west of the top, high point of the stone. It is believed most likely that the rail had been set in association with the creation of the 1968 tie card. The term "no stone" on BCS tie cards from that era is interpreted to mean "no stone found, rail set at probable location of the corner." The statement "no stone" is clearly erroneous, as the stone described in the 1866 record was present and appeared to be undisturbed. This corner was originally established as wood post in 1822.



Kenneth E. Hedge
Kenneth E. Hedge, County Surveyor

James S. Swift
James S. Swift, IN LS 20200054
March 27, 2015



PHOTOGRAPHIC DOCUMENTATION

Date of photography: June 6, 2014

The stone as originally found.



The stone from above.



The same picture as is shown above.
The etched "+" mark is enhanced for ease of visual detection and the high point is denoted with a black triangle.



For details and documentation, refer to related sheet "Section Corner Record."

View from above the stone looking south along County Road 150 West (Witt Road.)



View from the south, looking across the stone and north along County Road 150 West.



SECTION CORNER RECORD

NW 450-100

BOONE COUNTY SURVEYOR'S OFFICE

State Plane grid coordinates NAD83 (2011):

North: 1769427.44 East: 3119459.65 (U.S. survey feet)

Type of monument: Harrison, 4" disk 'Section Corner'

Depth: six inches below adjacent gravel road surface

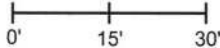
Indiana tie card references:

IN02_T19NR1W11_44 IN02_T19NR1W12_36

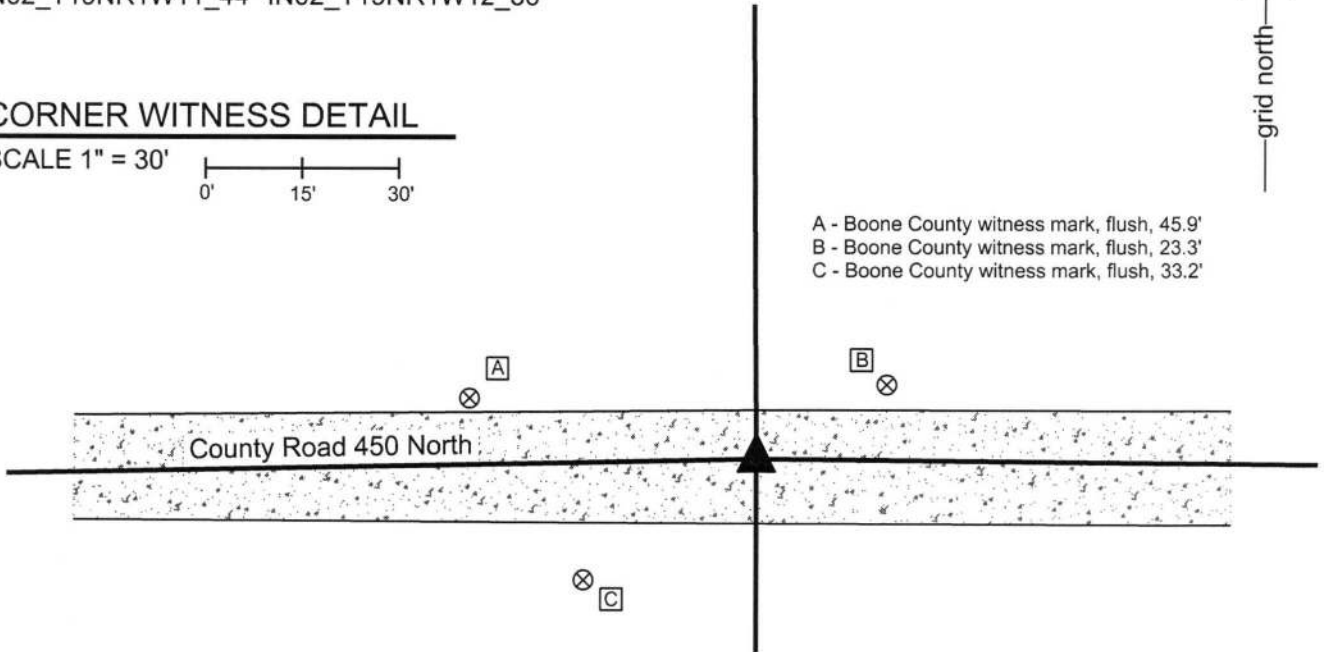


CORNER WITNESS DETAIL

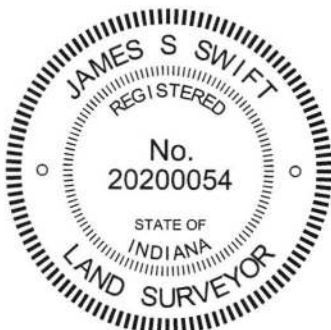
SCALE 1" = 30'



- A - Boone County witness mark, flush, 45.9'
- B - Boone County witness mark, flush, 23.3'
- C - Boone County witness mark, flush, 33.2'



The Harrison monument was set in a calculated position, near the position of a disturbed and displaced section of railroad rail found. No specific descriptions of this corner were found in the BCS Surveyor's Record, though the corner is mentioned as the terminal point for measurements in several entries. A BCS tie card November 7, 2006 shows the corner as a steel rail with no documentation of source. This corner was excavated on June 23, 2014. Prior to excavation a railroad rail was found flush with the surface of the roadway. The rail appeared leaning significantly towards the east. Excavation revealed that the rail was indeed leaning significantly and it appeared that it had been displaced by road grading equipment, which would be expected, given the shallow depth of the rail. Further excavation of an area extending 3 feet in all directions revealed no further evidence of the corner. The road bed in this particular vicinity is 3 inches of gravel material over the clay sub-base. At the time of excavation, the road bed was reconstructed and no monument was set, pending further review of the relative position of the disturbed railroad rail and monuments marking corners of properties tied to this corner. Further investigation of the dependent property corners to the west yielded the discovery of several rebars and a railroad spike. Overall uncertainties of approximately 0.5 foot were found to be associated with the relative positions of these monuments with respect to deed distances, but sufficient monumentation was available to calculate a position for the quarter section corner. This position was found to be approximately 0.7 foot west of the top of the disturbed rail, as originally found, which fit very well with the physical observation of the rail leaning to the east. The position of the corner was determined with respect to the relative positions of monuments to the west and the associated record descriptions. A Harrison monument was set at this position. The Harrison monument is 0.7 foot west of the top of the rail as it was found prior to excavation. Uncertainties of 0.5 of a foot exist with respect to this calculated position. This corner was originally established as a wood post in 1822.



Kenneth E. Hedge
Kenneth E. Hedge, County Surveyor

James S. Swift
James S. Swift, IN LS 20200054

March 28, 2016, revised March 23, 2017

Washington Township

Section 11 T19N, R1W	Section 12 T19N, R1W
-------------------------	-------------------------

SECTION CORNER RECORD

NW 450-150

BOONE COUNTY SURVEYOR'S OFFICE

State Plane grid coordinates NAD83 (2011):

Corner 1: North: 1769371.48 East: 3116812.47 (U.S. survey feet)
Harrison monument set, flush

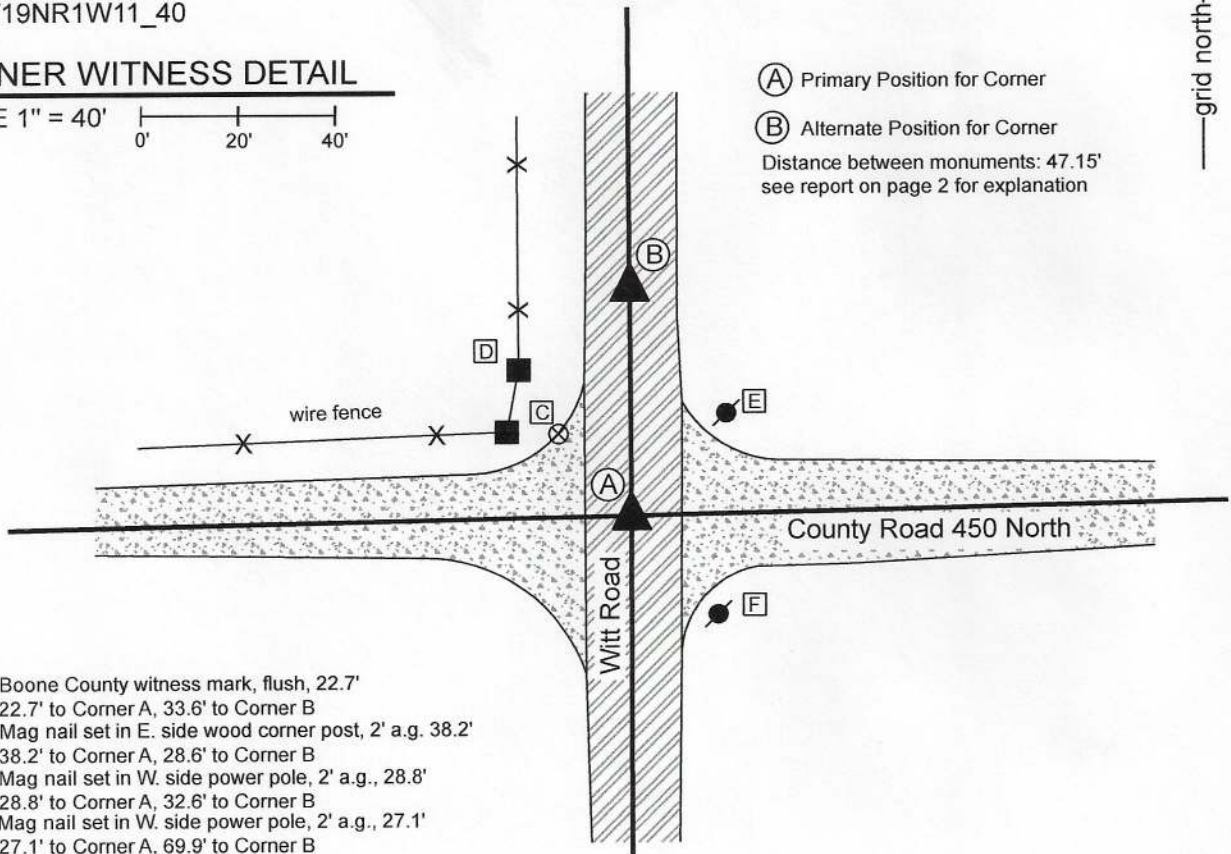
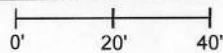
Corner 2: North: 1769418.63 East: 3116812.21 (U.S. survey feet)
5/8" diameter rebar with metal cap 'Boone County Surveyor'

Indiana tie card references:

IN02_T19NR1W11_40

CORNER WITNESS DETAIL

SCALE 1" = 40'



- C - Boone County witness mark, flush, 22.7'
22.7' to Corner A, 33.6' to Corner B
- D - Mag nail set in E. side wood corner post, 2' a.g. 38.2'
38.2' to Corner A, 28.6' to Corner B
- E - Mag nail set in W. side power pole, 2' a.g., 28.8'
28.8' to Corner A, 32.6' to Corner B
- F - Mag nail set in W. side power pole, 2' a.g., 27.1'
27.1' to Corner A, 69.9' to Corner B

PLEASE SEE PAGE 2 OF 2 FOR EXPLANATION OF RECORDS, EVIDENCE, MONUMENTATION AND RESULTS.

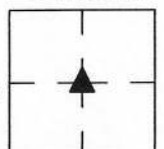


Kenneth E. Hedge
Kenneth E. Hedge, County Surveyor

James S. Swift
James S. Swift, IN LS 20200054
August 5, 2020 Page 1 of 2

Washington
Township

Section 11
T19N, R1W

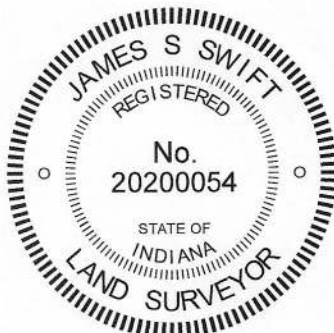


SECTION CORNER RECORD

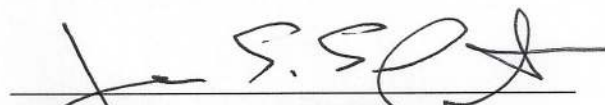
BOONE COUNTY SURVEYOR'S OFFICE

NW 450-150

This corner represents the center quarter corner of section 11, township 19 north, range 1 west. This is not an original corner of the PLSS. Significant uncertainty is attributed to the position of this corner, with two distinct interpretations of the corner, both of which have been documented as being the true corner by this office. The first record of this corner being established by the Surveyor's Office is an entry in the Boone County Surveyor's Record dated December 29, 1836, which shows a corner believed to be at or close to the corner noted hereon as Corner B, Alternate Position, shown as being corner 2 in the Surveyor's Record. The entry is physically crossed out with a large red cross with note attached stating 'disregard.' This note bears the initials 'D.M.B.' for David M. Burns, Boone County Surveyor from 1860 to 1872. The next record, chronologically, of this corner is dated March 30-31, 1866 which states, "Est'd. Set two rocks, bottom = 12x15x6 marked +. Top = 12x11x10 marked +." The 1836 and March, 1866 records both reference this corner as corner 2. However, a subsequent record, dated June 2, 1866, shows the corner as being south of the previous interpretation, stating "Est'd. Set two Rocks, bottom 8x6x5 marked +. Top 13x10x6 marked +." This interpretation of the corner is labeled as Corner 14. The section diagram associated with these records contains the words 'disregard' with a circle around Corner 2. This information is interpreted to indicate that the first position of the corner (Corner 2) was not held while the second position (Corner 14) was held to be the true corner as of June, 1866. It is noted that these different interpretations are almost certainly due to various treatment of the east-west line through the center of the section with respect to the presence of the east line of the Thorntown Indian Reserve, approximately 800 feet east of the west quarter corner of the section. (see BCS Corners NW 450-200 and NW 450-200 RSV). The BCS Surveyor's record clearly indicates that in June 1866, the southerly of the two possible positions for the corner was held by the Surveyor's Office and that the earlier, northerly, interpretation of the corner was intended to be disregarded. The southerly corner (Corner 14) is believed to fit with the center of County Road 450 North, as it was situated at that time and continues to be situated, approximately along a straight line connecting the west and east quarter corners of the section. However, 109 years later, in September, 1975 representatives of the Surveyor's Office documented a stone at or close to the northerly of the two corners (Corner 2), with a distance tie to the intersection of County Roads 150 West and 450 North. This document indicates that the northerly corner is the true center of section, directly contradicting the June, 1866 records. A subsequent document, dated November 7, 2006, provided to the Surveyor's Office by the local survey firm Anderson and Associates, shows "Mag Nail and Washer on Surface (in place of stone)" at the corner, with ties to a "Mag Nail and Washer on Surface" at the intersection of the two roads. This document clearly upholds the 1975 interpretation of the corner, contrary to the June, 1866 records. Analysis of the descriptions in deeds which are tied to this corner (or corners) indicates that both positions have been held by surveyors who created the descriptions. Three descriptions (Staton, D.R. 248, p.808, Biddle, D.R. 242, p.303 and Diffenbach, Instrument 0111926) call for the east-west road to be quarter section line. Other descriptions, including Anderson-Matthews, D.R. 256, pp.879-883, Lin and Davis, I 200900010502, Metzger, I9708510, Folse, I9902396, and Citi Mortgage, I 200700005081, all call for the east-west road as being the property line but note that it is south of the section line. The McQuern description (I0202901) calls for the road but does not call it the section line. Clearly the various deed descriptions endeavor to establish the existing road as the property lines but vary as to whether the road should be considered as the section line. A survey by Jerry L. Carter, LS #S0350, recorded as Instrument 0305088, March 21, 2013, in the Boone County Recorder's Office shows the northerly interpretation of the corner (Corner 2) being held as the corner. A survey by Ronald A. Wharry, LS #S0450, recorded in Survey Book 16, page 81, recorded December 8, 2016 shows the southerly interpretation (Corner 14, being the intersection of the two roads) as the corner. A survey by this surveyor, Swift, recorded as Instrument 2019006935, holds the same position as Wharry while discussing the two interpretations of the corner. Excavation at both positions revealed inconclusive evidence. Excavation in June, 2014 of an area 5 feet N-S by 5 feet E-W centered on the nail shown on the 2006 Anderson and Associates tie card at the intersection of the two roads did not reveal the stones called in the June, 1866 records. Excavation in June, 2020 at the position of the nail shown on the 2006 tie card, revealed a section of railroad rail leaning over a stone. The stone, found at 22 inches deep, measured 12 inches E-W by 7.5 inches N-S by 5 inches tall. Another stone found below, at 27 inches deep, measured 12 inches E-W by 11 inches N-S. Neither stone had an visible mark on it. The lower found stone matched two dimensions of the upper stone called in the March, 1866 record, but probing indicated that no other stone was situated below this stone. The top of the found rail was directly below the nail found at the surface prior to excavation. Both of these monuments were directly above the center of the upper found stone and above the southern edge of the lower found stone. Given the substantial uncertainty associated with this corner, both positions are acknowledged as legitimate interpretations of the corner. The southerly position is called out herein as the Primary Position of the corner while the northerly position is called out as the Alternate Position. The goal of this is to firmly establish the approximate center of County Road 450 North as the dividing line between respective properties, acknowledging that several of the descriptions dependent on the corner hold the road as the section line while others hold the road, but call it as being south of the section line. It is noted that holding the southerly position as the primary position is in agreement with the evidence of the March and June, 1866 BCS records. On June 22, 2020, a 5/8 inch diameter rebar with metal cap stamped 'Boone County Surveyor' was set in the position of the nail, rail and upper stone found marking the northerly position (Corner 2). A Harrison monument was set on the southerly prolongation of the line connecting this rebar with the Harrison monument previously set at the north quarter corner of section 11, at the same distance as measured between the nails found at the surface prior to excavation. This position fell 0.25 foot east of the nail found prior to excavation in 2014 and mag spike which temporarily marked the corner.

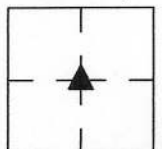



Kenneth E. Hedge, County Surveyor


James S. Swift, IN LS 20200054
August 5, 2020 Page 2 of 2

Washington
Township

Section 11
T19N, R1W



SECTION CORNER RECORD

BOONE COUNTY SURVEYOR'S OFFICE

NW 450-200

State Plane grid coordinates NAD83 (CORSS96):
 North: 1769316.11 East: 3114232.22 (U.S. survey feet)

Type of monument: Harrison, 4" disk 'Section Corner'
 Depth: six inches below adjacent road surface

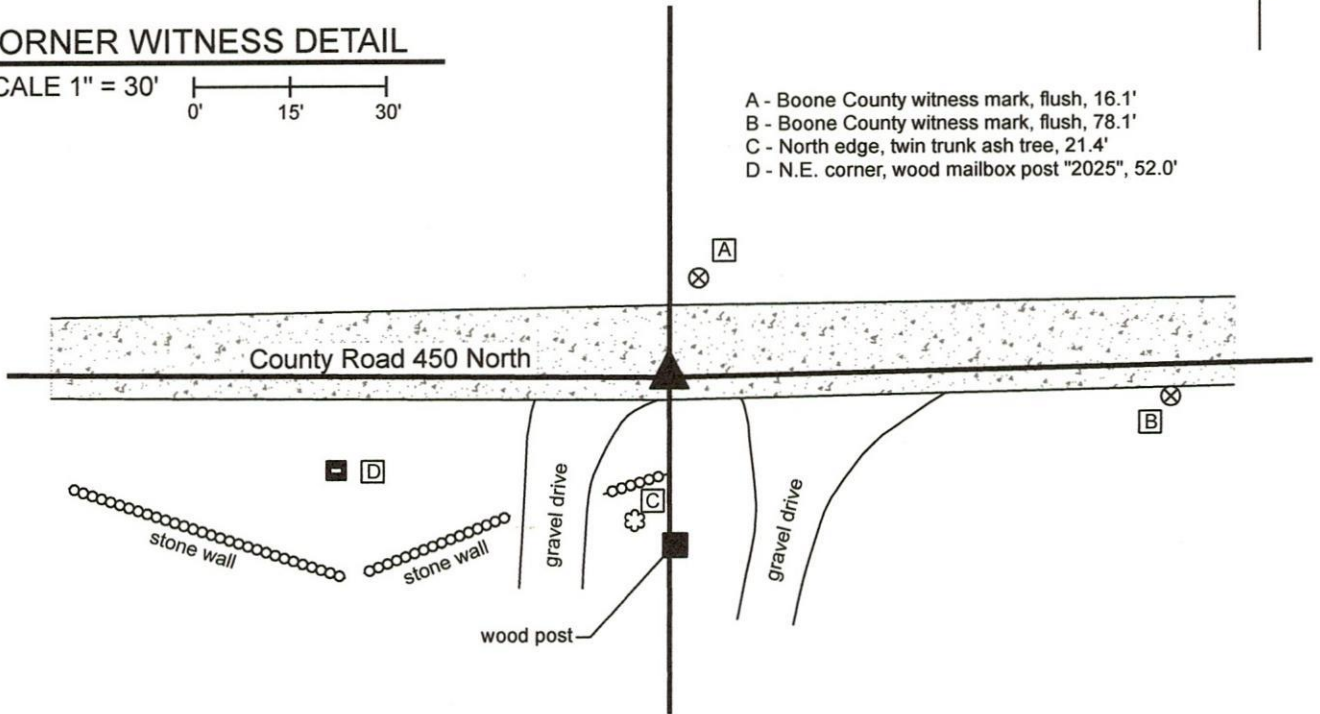
Indiana tie card references:
 IN02_T19NR1W10_44 IN02_T19NR1W11_36



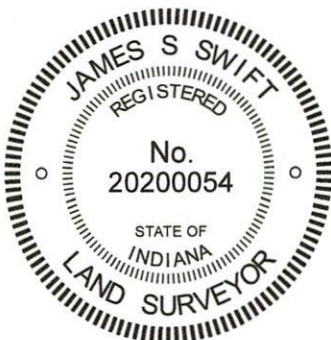
CORNER WITNESS DETAIL

SCALE 1" = 30'
 0' 15' 30'

- A - Boone County witness mark, flush, 16.1'
- B - Boone County witness mark, flush, 78.1'
- C - North edge, twin trunk ash tree, 21.4'
- D - N.E. corner, wood mailbox post "2025", 52.0'



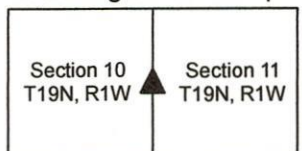
The Harrison monument was set over a stone found. No specific descriptions of this corner were found in the BCS Surveyor's Record beyond the original establishment of the corner as a wood post in 1829. The stone is noted as the terminal point for measurements in BCS records of 1839, 1866, 1896 and 1908, indicating that some monument was present from which to measure at those times. This corner was excavated on June 23, 2014. Prior to excavation, a 1/2 inch diameter rebar was found near the surface of the road, in-line with evidence of occupation to the south. No documentation was found to indicate the source of the rebar. Excavation revealed a stone found at 14 inches deep, slightly south and west of the rebar. The stone was at the bottom of the road bed, slightly embedded in the clay layer below the road bed. The stone was horizontal, oriented in cardinal directions with no obvious mark, matching the characteristics expected for a stone for which the records are similar (measurement references but no specific description in the BCS Surveyor's Record). The stone measured 13 inches N-S by 9 inches E-W by 7 inches tall. The stone was removed temporarily for purposes of probing below. No further evidence was found below and the stone was replaced in the position as found. The stone was accepted as the best available evidence of the corner. A Harrison monument was set directly above the top, center point of the stone. The rebar, removed during excavation, had been 1.6 feet north and 0.4 foot east of the top, center of the stone. It is noted that the line bearing east from this corner to the east line of the Thorntown Reserve, 802 feet east, is held per June, 1866 records for section 11. Please refer to documentation for the adjacent corner of the Reserve line, NW 450-200RSV (March 3, 2020).



Kenneth E. Hedge
 Kenneth E. Hedge, County Surveyor

James S. Swift
 James S. Swift, IN LS 20200054
 March 3, 2020

Washington Township



SECTION CORNER RECORD

BOONE COUNTY SURVEYOR'S OFFICE

NW 450-200RSV
RESERVE LINE

State Plane grid coordinates NAD83 (2011):
North: 1769333.77 East: 3115033.94 (U.S. survey feet)

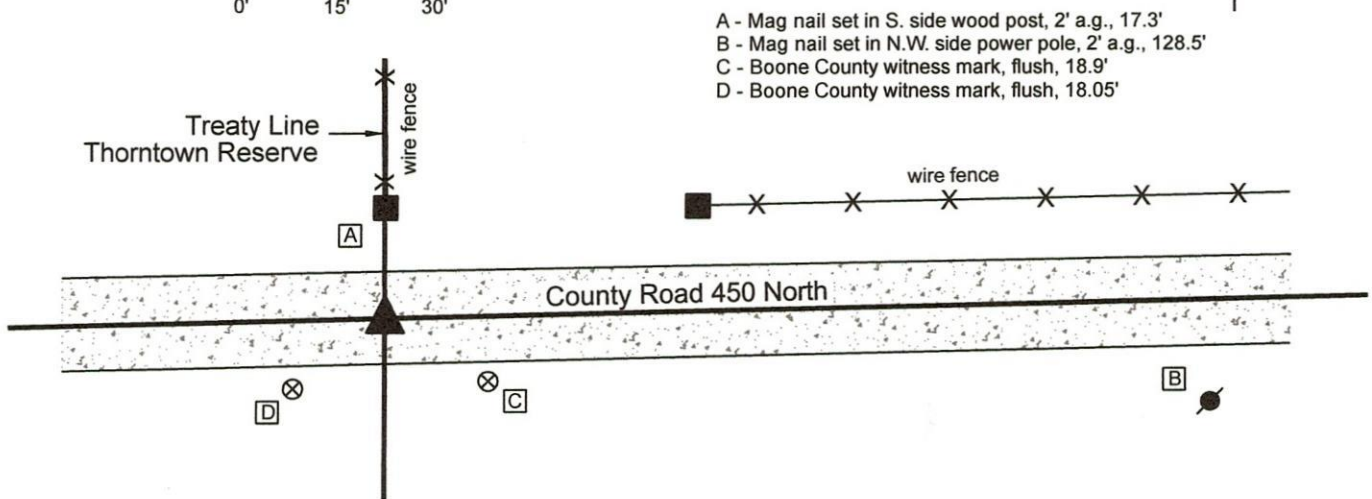
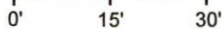
Type of monument: Harrison, 4" disk 'Section Corner'
Depth: six inches below adjacent road surface

Indiana tie card references:
IN02_T19NR1W11_38 (nearest grid corner)

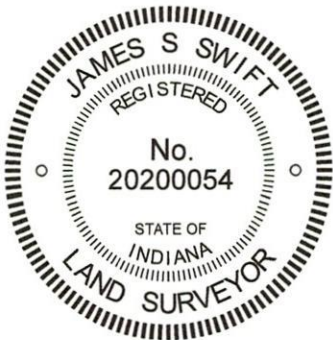


CORNER WITNESS DETAIL

SCALE 1" = 30'

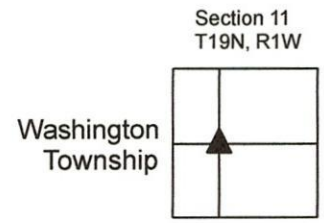


The Harrison monument was set over a stone found. This corner falls along the east line of the Thorntown Indian Reserve, a 10 square mile tract of land reserved out of the Treaty at St. Mary's, October 1818, also known as the New Purchase. This corner is not an original federal corner. However, the corner was established by the Boone County Surveyor in 1866 and sufficient uncertainty may be attributed to this corner and the east-west line through the center of Section 11 to merit excavation, monumentation and documentation. The corner was firmly established by the Boone County Surveyor on June 2, 1866, for which the record states "Estd. Set two rocks, Bottom 12x8x6 marked +. Top 12x12x8 marked + on top." It is noted that this corner appears to have been located along or near a straight line connecting the west and east quarter corners of section 11 and is south of another, previous interpretation of the corner as being well north of this point. The record indicates that as of March, 1866, the east-west line through the center of section 11 was interpreted as respecting a substantial bend at the treaty line but that this interpretation was revised and the more straight east-west line was held as of June 1866. The later interpretation agrees with the current evidence of the existing east-west road bed but is in conflict with later BCS records for the center quarter corner of section 11 (see BCS Corner NW 450-150). The corner was excavated on June 23, 2014. On that date, both stones described in the June 2, 1866 record were found. The top stone, found at 9 inches deep, appeared to have been leaned to the east, presumably by road grading equipment. As found, the stone measured 12 inches N-S by 12 inches E-W by 8 inches tall. A clearly visible etched + mark was found on the east side on what appears to have been the top of the stone prior to being disturbed. The lower stone was found at 17 inches deep. The top of the stone was found to measure 12 inches N-S by 9 inches E-W with a clearly visible etched + mark on the top center. The corner as established June 2, 1866 was held. The upper stone was removed and a Harrison monument was set directly over the etched mark on the top of the lower stone.



Kenneth E. Hedge
Kenneth E. Hedge, County Surveyor

James S. Swift
James S. Swift, IN LS 20200054
March 3, 2020



SECTION CORNER RECORD

NW 500-100

BOONE COUNTY SURVEYOR'S OFFICE

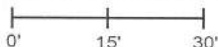
State Plane grid coordinates NAD83 (CORS96):
North: 1772071.05 East: 3119444.88 (U.S. survey feet)

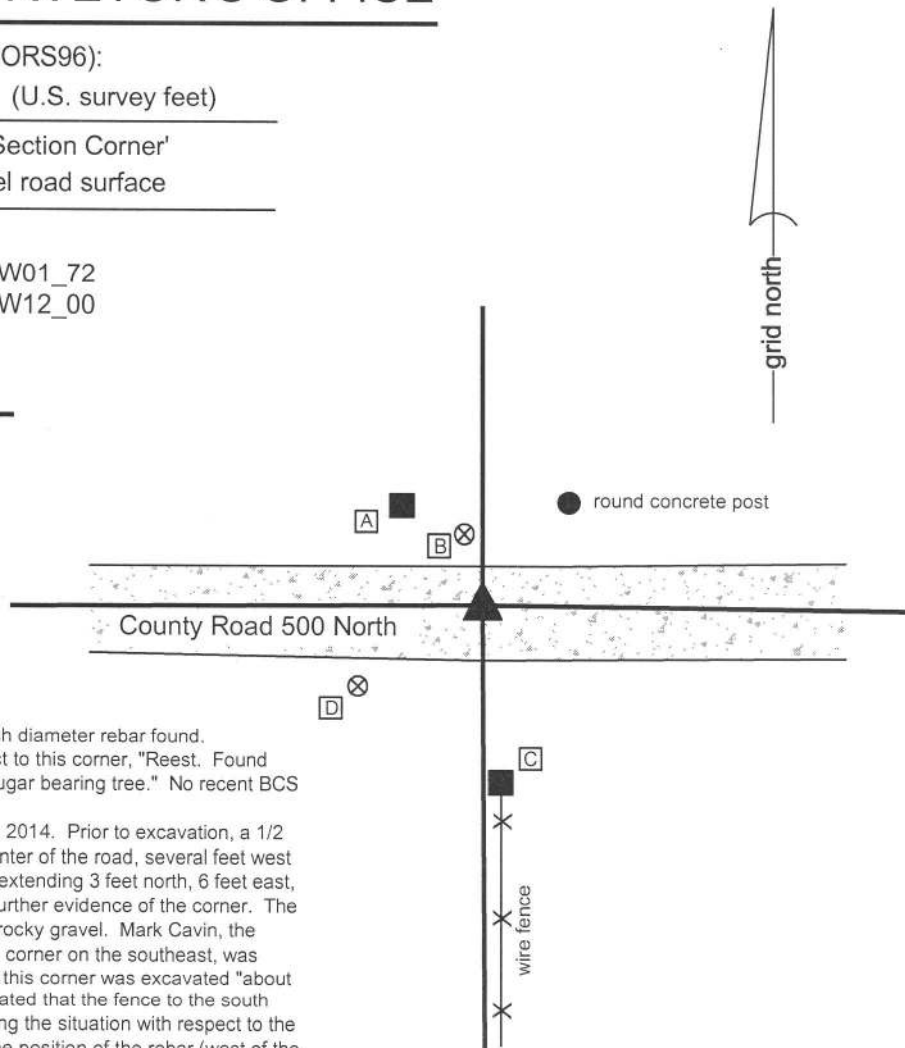
Type of monument: Harrison, 4" disk 'Section Corner'
Depth: six inches below adjacent gravel road surface

Indiana tie card references:

IN02_T19NR1W02_80 IN02_T19NR1W01_72
IN02_T19NR1W11_08 IN02_T19NR1W12_00

CORNER WITNESS DETAIL

SCALE 1" = 30' 



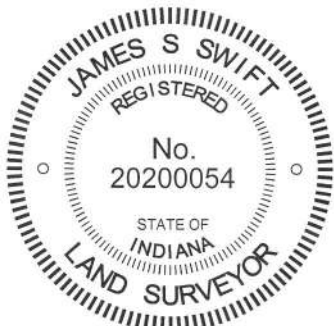
The Harrison monument was set in place of a 1/2 inch diameter rebar found. A BCS record of March 5-7, 1863 states, with respect to this corner, "Reest. Found stone at corner and marked it. Found roots of one sugar bearing tree." No recent BCS tie cards were found referencing this corner.

Excavation was performed at this corner on June 30, 2014. Prior to excavation, a 1/2 inch diameter rebar was found in the approximate center of the road, several feet west of the old fence to the south. Excavation of an area extending 3 feet north, 6 feet east, 5 feet south and 3 feet west of the rebar yielded no further evidence of the corner. The road bed in this vicinity was 4 to 6 inches of a large, rocky gravel. Mark Cavin, the resident and owner of the property which adjoins this corner on the southeast, was present during the excavation. Mr. Cavin stated that this corner was excavated "about 30 years ago and they found something." He also stated that the fence to the south had been there as long he could remember. Analyzing the situation with respect to the type of monument found (1/2 inch diameter rebar), the position of the rebar (west of the fence) and the time frame of previous excavation per Mr. Cavin's testimony, it is reasonable to conclude that the stone may have been found at that time and replaced with the 1/2 inch rebar. It is known that it was common practice for field crews in that era to remove stones, if found, and replace them with metal monuments, but not necessarily fully document the activity. Many stones are known to have been replaced with 1/2 inch rebars. The fact that the rebar is not in line with the fence is taken as evidence in support of this. It is common for stones to be found a short distance one side or the other of a fence, but it is typical that metal monuments set at estimated positions without the benefit of older evidence, such as a stone, to be set more in line with the fence. It is further noted that the rebar also fit very well with deed distances relative to monumentation and evidence of occupation for property corners to the east. The rebar was accepted as the best available evidence of the corner. The rebar was removed and replaced with a Harrison monument in the same position.

This corner was originally established as a wood post in 1822.

- A - Mag nail set in S.E. side wood post, 2' a.g., 19.2'
- B - Boone County witness mark, flush, 11.5'
- C - Mag nail set in N. side wood post, 2' a.g., 26.2'
- D - Boone County witness mark, flush, 23.2'

Boone County witness mark is a 3/8" diameter x 2' long rebar bearing a metal cap stamped "Boone County Witness Point."




Kenneth E. Hedge, County Surveyor


James S. Swift, IN LS 20200054
March 27, 2015

Washington Township

Section 2 T19N, R1W	Section 1 T19N, R1W
Section 11 T19N, R1W	Section 12 T19N, R1W

SECTION CORNER RECORD

BOONE COUNTY SURVEYOR'S OFFICE

NW 500-150

State Plane grid coordinates NAD83 (CORS96):
 North: 1772063.34 East: 3116797.27 (U.S. survey feet)

Type of monument: Harrison, 4" disk 'Section Corner'
 Depth: One inch below adjacent road surface

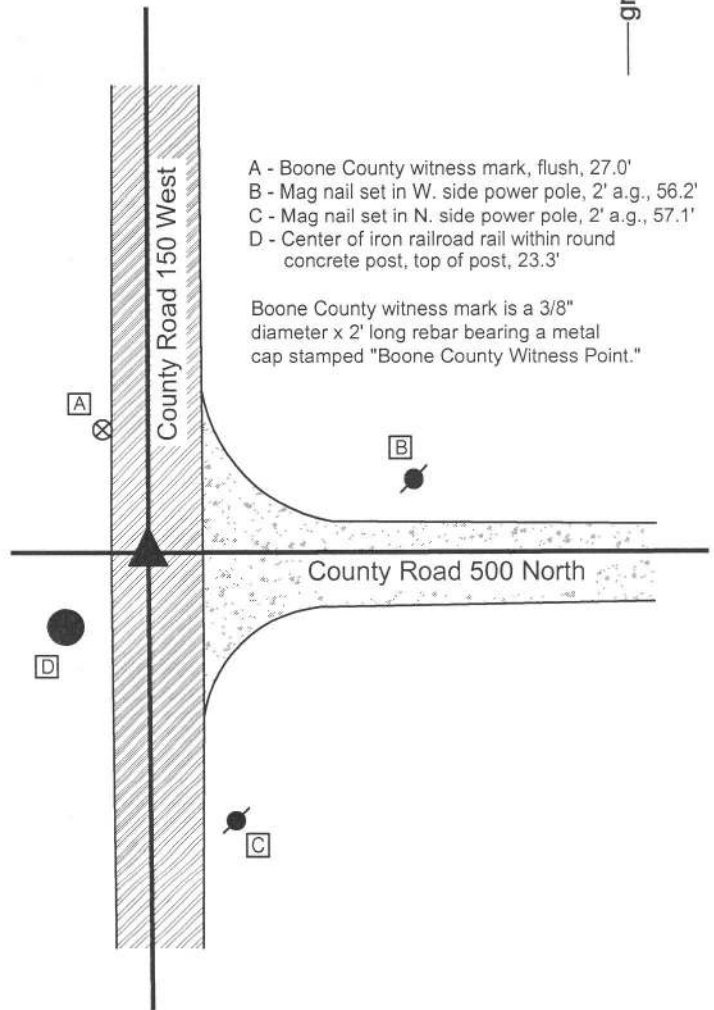
Indiana tie card references:
 IN02_T19NR1W02_72
 IN02_T19NR1W11_08



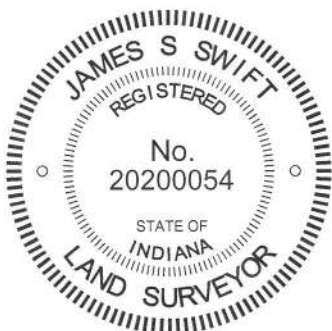
CORNER WITNESS DETAIL

SCALE 1" = 40'

The Harrison monument was set over the top of a stone found. A BCS record of March 30-31, 1866 states, with respect to this corner, "Reest'd from trees. Set Rock 16x14x9, 1 on top." No recent BCS tie cards were found referencing this corner. Excavation was performed at this corner on June 6, 2014. Prior to excavation, a Mag nail was found 2 inches below the surface, in a hole in the asphalt roadway. Excavation revealed a railroad spike found directly below the Mag nail. Further excavation revealed a stone found at 14 inches deep, north of the spike. The stone was haphazard in its orientation, being neither vertical nor aligned with cardinal directions. The stone measured 12x8x9 inches and was entirely within the fill material of the roadway. This stone was removed and the stone described in the 1866 record was found below at 2 feet deep. With 7 inches of the top exposed, the lower stone measured 9 inches E-W by 11 inches N-S. The south side of the stone was sloping and clearly becoming larger. Using a probe pushed vertically along the south edge of the stone, it was determined that the full N-S extent of the stone was 14 inches, matching two of the dimensions described in the 1866 record. The total height of the stone was not measured, but it was observed that the stone was embedded in the clay layer below the road and appeared to be vertical. The stone had a rounded top, the high point of which was coincident with the approximate center of the top. No specific marks were identified. The stone was held as marking the corner and a Harrison monument was set directly over the top, center, high point of the stone. The Mag nail and railroad spike, removed during excavation, had been 1.7 feet south of this point. This corner was originally established as a wood post in 1822.



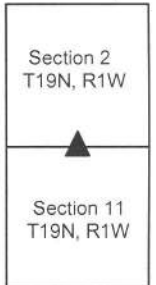
- A - Boone County witness mark, flush, 27.0'
 - B - Mag nail set in W. side power pole, 2' a.g., 56.2'
 - C - Mag nail set in N. side power pole, 2' a.g., 57.1'
 - D - Center of iron railroad rail within round concrete post, top of post, 23.3'
- Boone County witness mark is a 3/8" diameter x 2' long rebar bearing a metal cap stamped "Boone County Witness Point."



Kenneth E. Hedge
 Kenneth E. Hedge, County Surveyor

James S. Swift
 James S. Swift, IN LS 20200054
 March 27, 2015

Washington Township



PHOTOGRAPHIC DOCUMENTATION

Date of photography: June 6, 2014

The upper stone found in the fill material.



The lower stone, being the stone described in the 1866 record, exposed and washed.



View from above the stone, looking east along County Road 500 North.



View from above the stone, looking south along County Road 150 West (Witt Road.)



For details and documentation, refer to related sheet "Section Corner Record."

SECTION CORNER RECORD

NW-500-200

BOONE COUNTY SURVEYOR'S OFFICE

State Plane grid coordinates NAD83 (2011):

North: 1771950.07 East: 3114264.48 (U.S. survey feet)

Type of monument: 5/8 inch diameter rebar with cap 'Boone County Surveyor'

Depth: six inches above adjacent ground, at east edge, concrete post

Indiana tie card references:

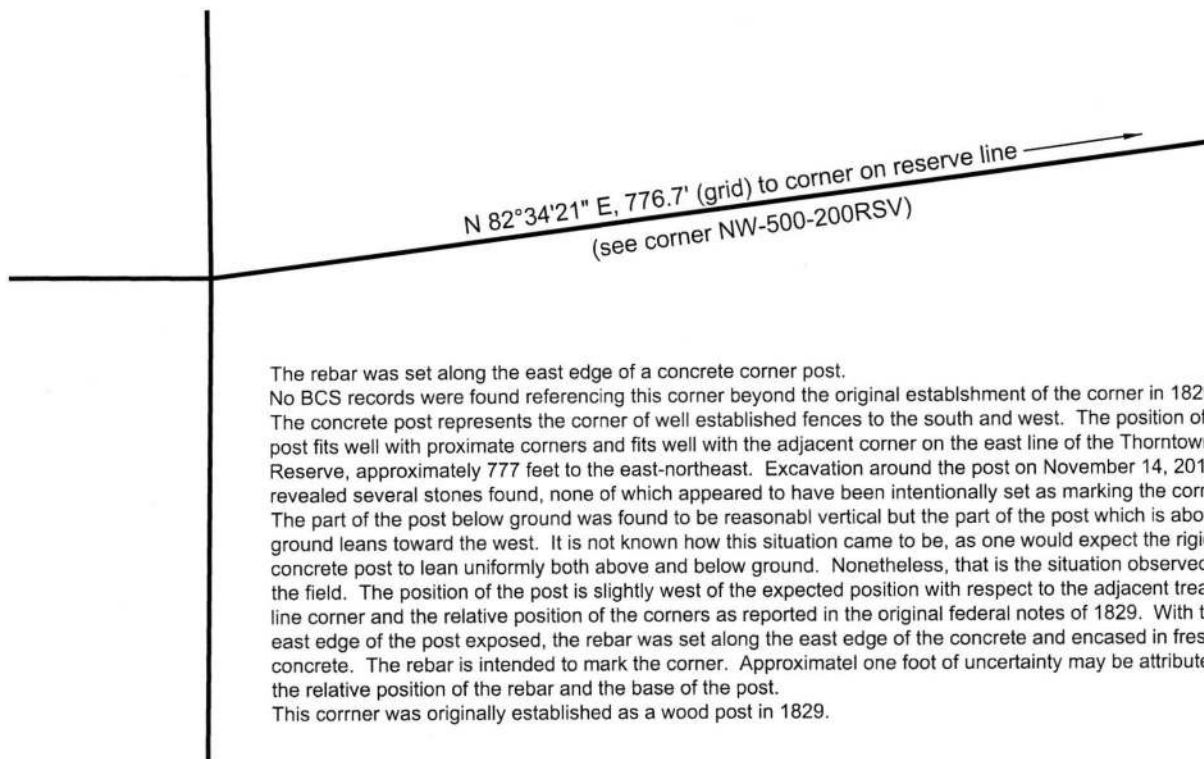
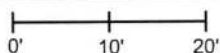
IN02_T19NR1W03_80 IN02_T19NR1W02_72

IN02_T19NR1W10_08 IN02_T19NR1W11_00

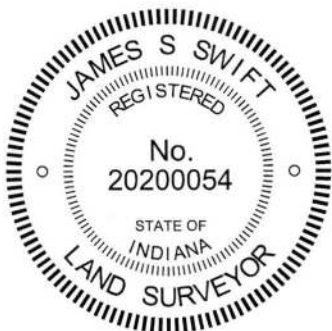


CORNER WITNESS DETAIL

SCALE 1" = 20'



The rebar was set along the east edge of a concrete corner post. No BCS records were found referencing this corner beyond the original establishment of the corner in 1829. The concrete post represents the corner of well established fences to the south and west. The position of the post fits well with proximate corners and fits well with the adjacent corner on the east line of the Thorntown Reserve, approximately 777 feet to the east-northeast. Excavation around the post on November 14, 2017 revealed several stones found, none of which appeared to have been intentionally set as marking the corner. The part of the post below ground was found to be reasonable vertical but the part of the post which is above ground leans toward the west. It is not known how this situation came to be, as one would expect the rigid concrete post to lean uniformly both above and below ground. Nonetheless, that is the situation observed in the field. The position of the post is slightly west of the expected position with respect to the adjacent treaty line corner and the relative position of the corners as reported in the original federal notes of 1829. With the east edge of the post exposed, the rebar was set along the east edge of the concrete and encased in fresh concrete. The rebar is intended to mark the corner. Approximatel one foot of uncertainty may be attributed to the relative position of the rebar and the base of the post. This corner was originally established as a wood post in 1829.



Kenneth E. Hedge
Kenneth E. Hedge, County Surveyor

James S. Swift
James S. Swift, IN LS 20200054
January 10, 2018

Washington Township

Section 3 T19N, R1W	Section 2 T19N, R1W
Section 10 T19N, R1W	Section 11 T19N, R1W

SECTION CORNER RECORD

BOONE COUNTY SURVEYOR'S OFFICE

NW 500-200RSV
 Angle Point on the
 Thorntown Reserve Line

State Plane grid coordinates NAD83 (2011):
 North: 1772050.41 East: 3115034.14 (U.S. survey feet)

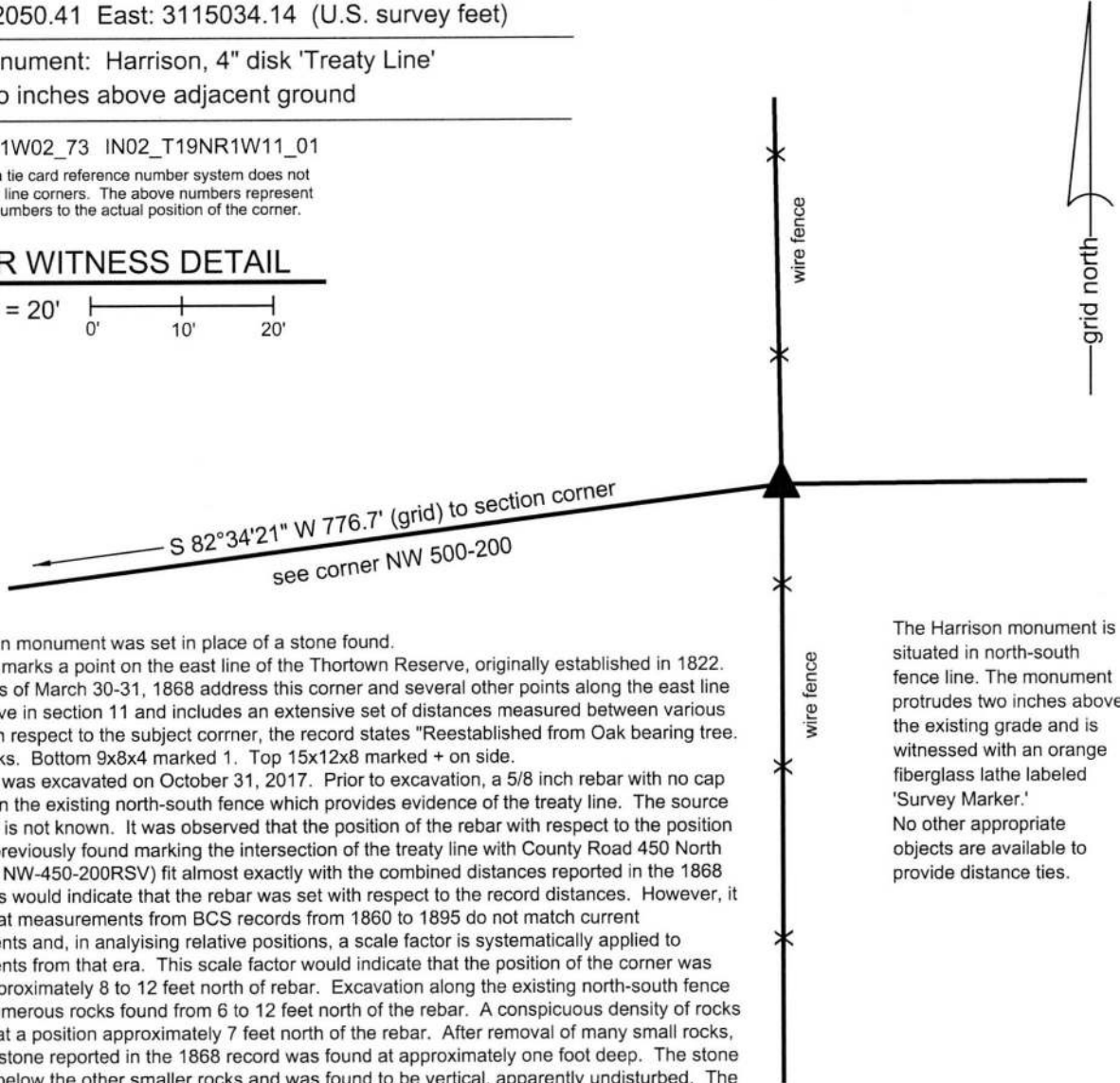
Type of monument: Harrison, 4" disk 'Treaty Line'
 Depth: Two inches above adjacent ground

IN02_T19NR1W02_73 IN02_T19NR1W11_01

Note: the Indiana tie card reference number system does not account for treaty line corners. The above numbers represent closest discrete numbers to the actual position of the corner.

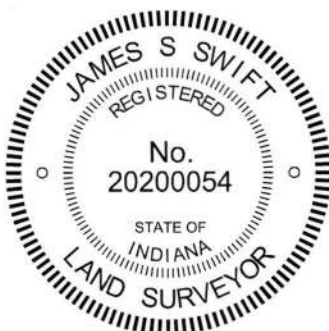
CORNER WITNESS DETAIL

SCALE 1" = 20'



The Harrison monument was set in place of a stone found. This corner marks a point on the east line of the Thorntown Reserve, originally established in 1822. BCS records of March 30-31, 1868 address this corner and several other points along the east line of the reserve in section 11 and includes an extensive set of distances measured between various points. With respect to the subject corner, the record states "Reestablished from Oak bearing tree. Set two rocks. Bottom 9x8x4 marked 1. Top 15x12x8 marked + on side. This corner was excavated on October 31, 2017. Prior to excavation, a 5/8 inch rebar with no cap was found in the existing north-south fence which provides evidence of the treaty line. The source of the rebar is not known. It was observed that the position of the rebar with respect to the position of a stone previously found marking the intersection of the treaty line with County Road 450 North (see corner NW-450-200RSV) fit almost exactly with the combined distances reported in the 1868 record. This would indicate that the rebar was set with respect to the record distances. However, it is known that measurements from BCS records from 1860 to 1895 do not match current measurements and, in analysing relative positions, a scale factor is systematically applied to measurements from that era. This scale factor would indicate that the position of the corner was likely be approximately 8 to 12 feet north of rebar. Excavation along the existing north-south fence revealed numerous rocks found from 6 to 12 feet north of the rebar. A conspicuous density of rocks was found at a position approximately 7 feet north of the rebar. After removal of many small rocks, the bottom stone reported in the 1868 record was found at approximately one foot deep. The stone was found below the other smaller rocks and was found to be vertical, apparently undisturbed. The stone measured 9 inches tall by 8 inches N-S by 4 inches E-W with a flat, vertical east face. A single mark across the top appeared to represent the "1" described in the record. The upper stone was not found and is believed to have been removed previously. The stone was held as marking the corner. The stone was removed and replaced with a Harrison monument in the same position. The rebar was left in place, 6.9 feet south and 0.5 foot east of the corner.

The Harrison monument is situated in north-south fence line. The monument protrudes two inches above the existing grade and is witnessed with an orange fiberglass lathe labeled 'Survey Marker.' No other appropriate objects are available to provide distance ties.



Kenneth E. Hedge
 Kenneth E. Hedge, County Surveyor

James S. Swift
 James S. Swift, IN LS 20200054
 January 10, 2018

Washington Township

