

SECTION CORNER RECORD

NE 400-300

BOONE COUNTY SURVEYOR'S OFFICE

State Plane grid coordinates NAD83 (2011):

North: 1766872.77 East: 3140390.85 (U.S. survey feet)

Type of monument: Harrison, 4" disk 'Section Corner'

Depth: One inch below adjacent road surface

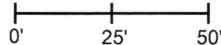
Indiana tie card references:

IN02_T19NR1E09_80 IN02_T19NR1E10_72

IN02_T19NR1E16_08 IN02_T19NR1E15_00

CORNER WITNESS DETAIL

SCALE 1" = 50'



A - Mag nail set in S.E. side power pole, 2' a.g., 92.7'

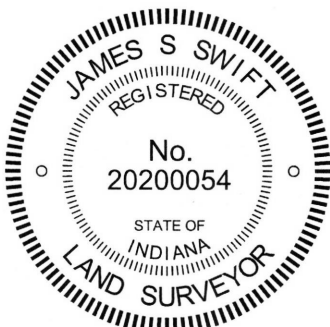
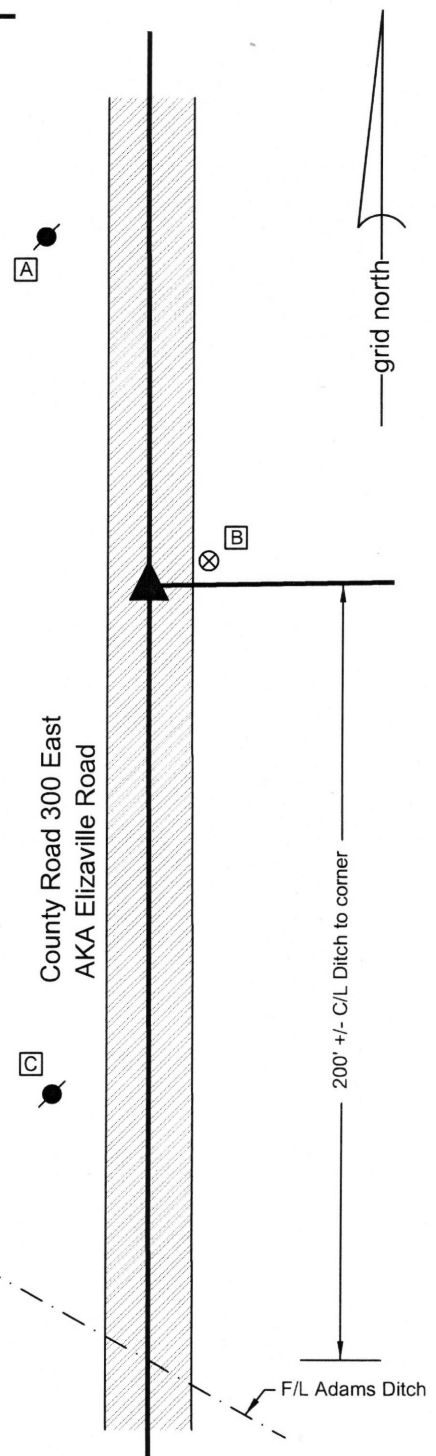
B - Boone County witness mark, flush, 16.8'

C - Mag nail set in N.E. side power pole, 2' a.g., 132.2'

Boone County witness mark is a 3/8" diameter x 2' long rebar bearing a metal cap stamped "Boone County Witness Point."

The Harrison monument was set at a calculated position.

No specific descriptions of this corner were found in the old BCS Surveyor's Record, nor were any recent BCS tie cards found referencing this corner. The corner is not shown as being monumented on private surveys recorded in the Boone County Recorder's Office. Also no evidence of the corner was found in the immediate vicinity of the corner except for the straight north-south roadway of County Road 300 East. This corner was excavated on October 16, 2013. No monuments were found prior to excavation. A calculated position for the corner was determined by extending the line of a fence providing evidence of the south line of the east half of the southwest quarter of section 10 west to the center of County Road 300 East, which point also fit with a position for the corner which was calculated by extending a line north from the east quarter corner of section 16 at double the distance from said quarter corner to the apparent southeast corner of the north half of the northeast quarter of section 16, as determined at the apparent intersection of the physical center of a straight E-W section of Elizaville Road with the physical center of County Road 300 East. Excavation of an area extending north 3 feet, south 3 feet, east 2 feet and west 2 feet yielded no evidence of the corner. The bottom of the road bed was found to be at 14 inches deep. Excavation extended to a minimum of 20 inches deep. A Harrison monument was set at the calculated position for the corner.



Kenneth E. Hedge
 Kenneth E. Hedge, County Surveyor

James S. Swift
 James S. Swift, IN LS 20200054
 March 24, 2016

Clinton Township

Section 9 T19N, R1E	Section 10 T19N, R1E
Section 16 T19N, R1E	Section 15 T19N, R1E

Center Township

SECTION CORNER RECORD

NE 400-350

BOONE COUNTY SURVEYOR'S OFFICE

State Plane grid coordinates NAD83 (2011):

North: 1766911.46 East: 3142978.11 (U.S. survey feet)

Type of monument: Harrison, 4" disk 'Section Corner'

Depth: Two inches above adjacent grade

Indiana tie card references:

IN02_T19NR1E10_76 IN02_T19NR1E15_04



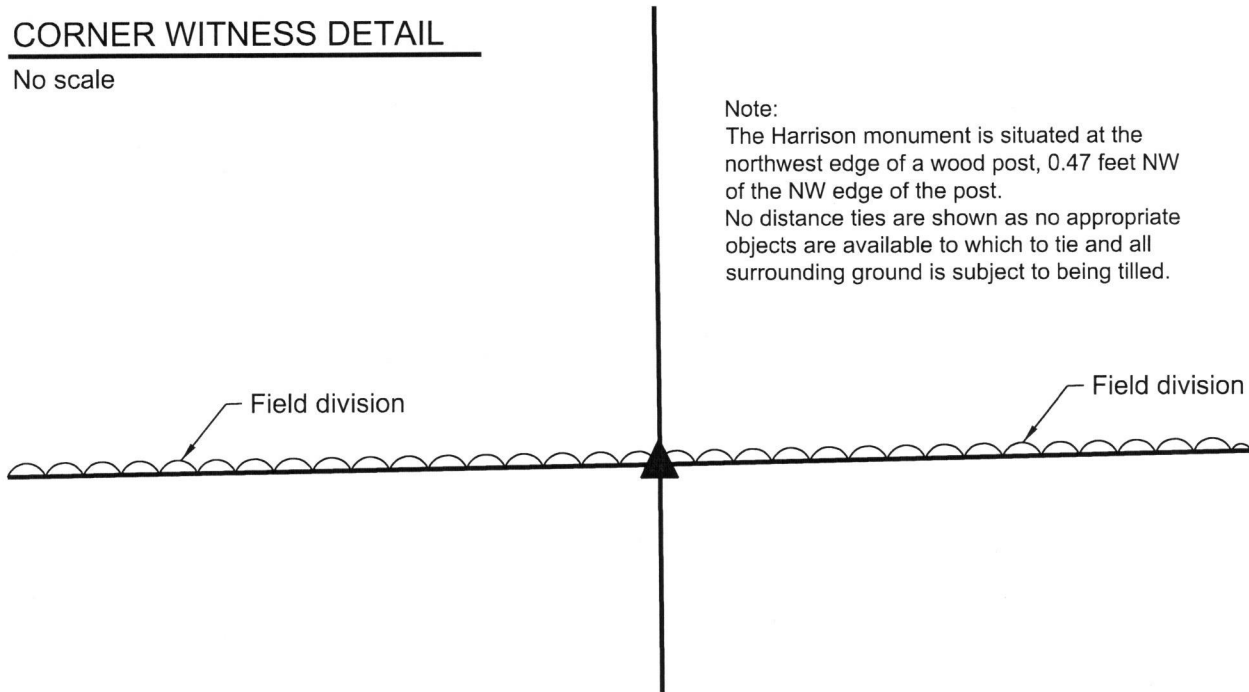
CORNER WITNESS DETAIL

No scale

Note:

The Harrison monument is situated at the northwest edge of a wood post, 0.47 feet NW of the NW edge of the post.

No distance ties are shown as no appropriate objects are available to which to tie and all surrounding ground is subject to being tilled.



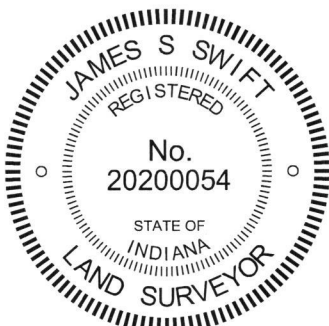
The Harrison monument was set in place of a stone found at the northwest edge of a wood post.

A BCS record of March 10, 1852 shows the corner with a distance tie to two trees but makes no specific mention of a monument set or found.

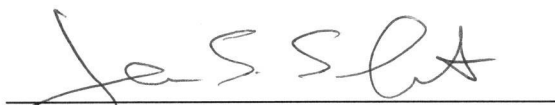
No recent BCS tie cards were found re-rencing the corner.

An ancient wood post with fencing to cut-off to the north and west was found witnessing the corner. The post is in-line with a field division to the east and west and is in a position which fits well with distances to proximate corners. Excavation around the post on October 16, 2017 yielded several small stones and one larger stone. The larger stone was leaning slightly as found, embedded in the dirt adjacent to the post with top flush with the ground. The stone did not appear to be acting as a brace rock for the post and did not have the haphazard placement of the the other stones around the post. The stone was removed from the ground and measured to be 14 inches tall by 9 inches E-W by 9 inches N-S. The stone had a large base and smaller, flat top, readily identifiable as the corner. This stone was accepted as marking the corner and was replaced with a Harrison monument in the same position. The monument is situated at the northwest edge of the post, 0.47 feet northwest of the northwest edge of the post. The stone was left sitting on the ground adjacent to the monument.

This corner was originally established as a wood post in 1822.




Kenneth E. Hedge, County Surveyor


James S. Swift, IN LS 20200054
October 17, 2017

Clinton
Township

Section 10
T19N, R1E

Center
Township

Section 15
T19N, R1E

SECTION CORNER RECORD

BOONE COUNTY SURVEYOR'S OFFICE

NE 400-400

State Plane grid coordinates NAD83 (CORS96):

North: 1766962.85 East: 3145574.53 (U.S. survey feet)

Type of monument: Harrison, 4" disk 'Section Corner'

Depth: six inches below adjacent gravel road surface

Indiana tie card references:

IN02_T19NR1E10_80

IN02_T19NR1E11_72

IN02_T19NR1E15_08

IN02_T19NR1E14_00

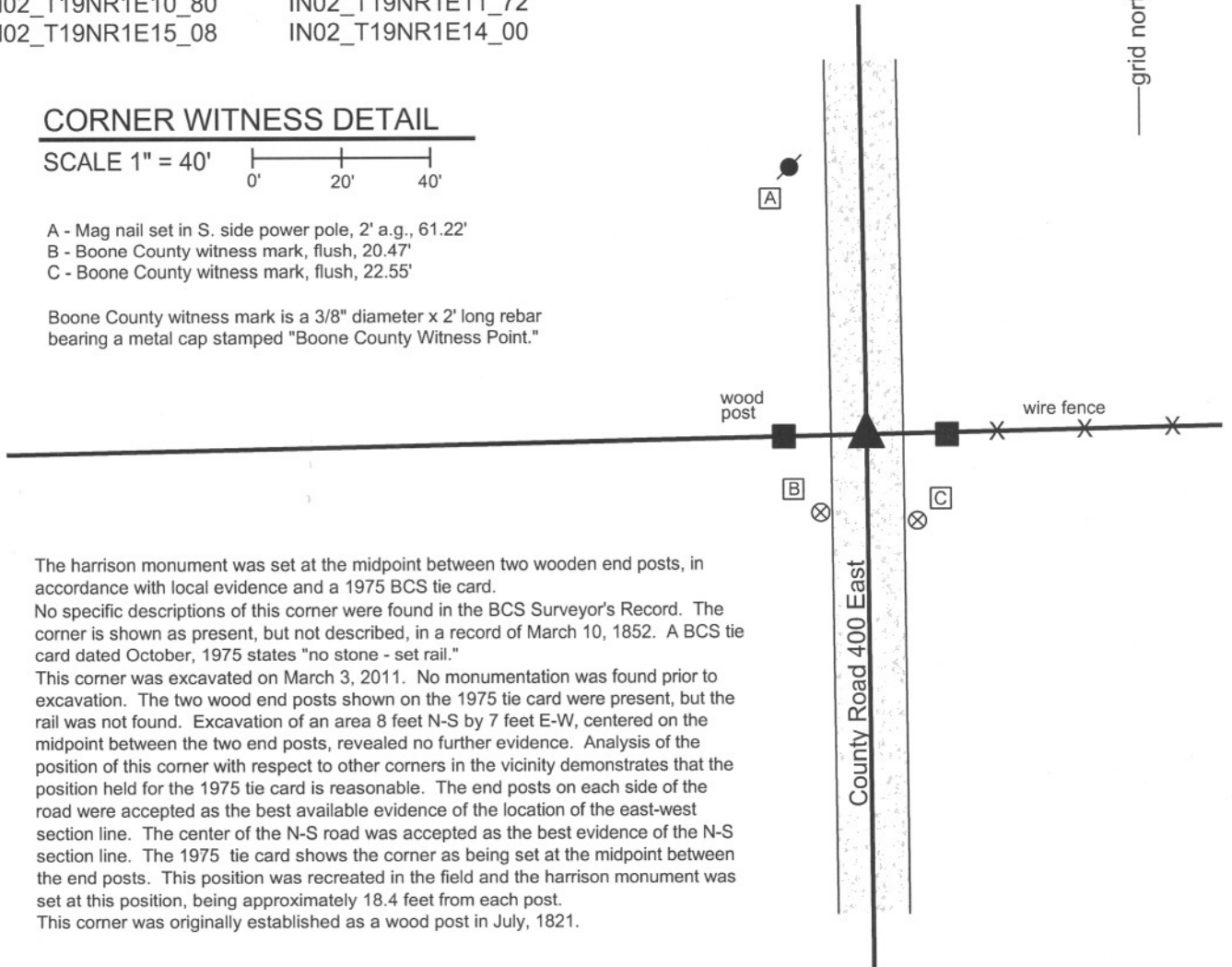
CORNER WITNESS DETAIL

SCALE 1" = 40'

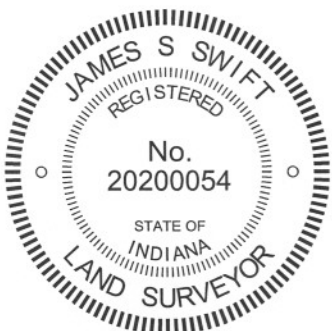


- A - Mag nail set in S. side power pole, 2' a.g., 61.22'
- B - Boone County witness mark, flush, 20.47'
- C - Boone County witness mark, flush, 22.55'

Boone County witness mark is a 3/8" diameter x 2' long rebar bearing a metal cap stamped "Boone County Witness Point."



The Harrison monument was set at the midpoint between two wooden end posts, in accordance with local evidence and a 1975 BCS tie card. No specific descriptions of this corner were found in the BCS Surveyor's Record. The corner is shown as present, but not described, in a record of March 10, 1852. A BCS tie card dated October, 1975 states "no stone - set rail." This corner was excavated on March 3, 2011. No monumentation was found prior to excavation. The two wood end posts shown on the 1975 tie card were present, but the rail was not found. Excavation of an area 8 feet N-S by 7 feet E-W, centered on the midpoint between the two end posts, revealed no further evidence. Analysis of the position of this corner with respect to other corners in the vicinity demonstrates that the position held for the 1975 tie card is reasonable. The end posts on each side of the road were accepted as the best available evidence of the location of the east-west section line. The center of the N-S road was accepted as the best evidence of the N-S section line. The 1975 tie card shows the corner as being set at the midpoint between the end posts. This position was recreated in the field and the Harrison monument was set at this position, being approximately 18.4 feet from each post. This corner was originally established as a wood post in July, 1821.



Kenneth E. Hedge
Kenneth E. Hedge, County Surveyor

James S. Swift
James S. Swift, IN LS 20200054
March 1, 2012

Clinton Twp	Section 10 T19N, R1E	Section 11 T19N, R1E
Center Twp	Section 15 T19N, R1E	Section 14 T19N, R1E

SECTION CORNER RECORD

BOONE COUNTY SURVEYOR'S OFFICE

NE 450-300

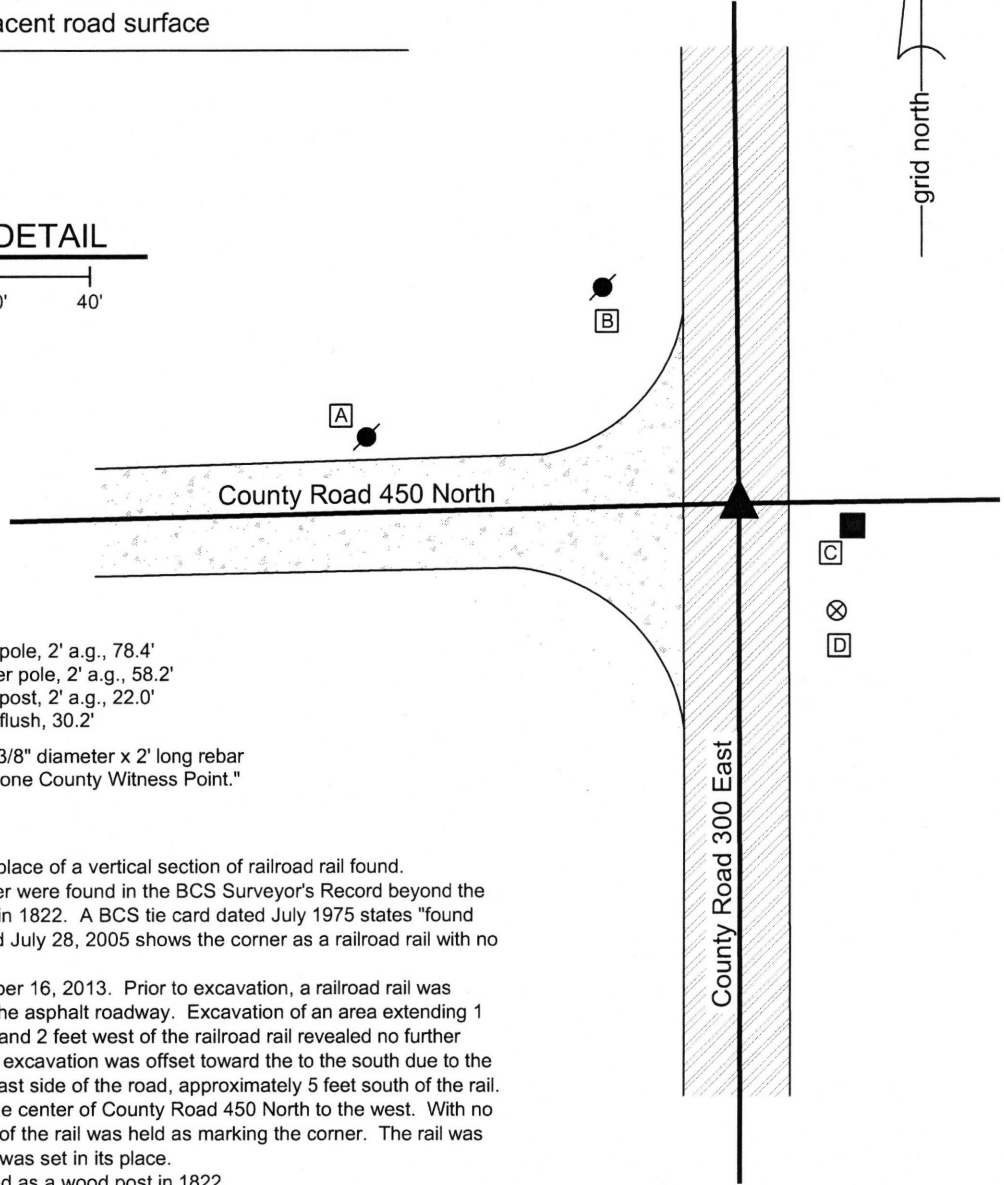
State Plane grid coordinates NAD83 (2011):
 North: 1769532.22 East: 3140382.94 (U.S. survey feet)

Type of monument: Harrison, 4" disk 'Section Corner'
 Depth: One inch below adjacent road surface

Indiana tie card references:
 IN02_T19NR1E09_44
 IN02_T19NR1E10_36

CORNER WITNESS DETAIL

SCALE 1" = 40'

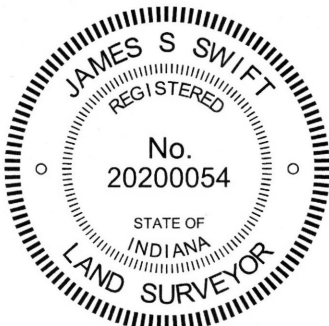


- A - Mag nail set in S. side power pole, 2' a.g., 78.4'
- B - Mag nail set in S.E. side power pole, 2' a.g., 58.2'
- C - Mag nail set in W. side wood post, 2' a.g., 22.0'
- D - Boone County witness mark, flush, 30.2'

Boone County witness mark is a 3/8" diameter x 2' long rebar bearing a metal cap stamped "Boone County Witness Point."

The Harrison monument was set in place of a vertical section of railroad rail found. No specific descriptions of this corner were found in the BCS Surveyor's Record beyond the original establishment of the corner in 1822. A BCS tie card dated July 1975 states "found spike in road." A BCS tie card dated July 28, 2005 shows the corner as a railroad rail with no documentation of source.

This corner was excavated on October 16, 2013. Prior to excavation, a railroad rail was found at 7 inches deep in a hole in the asphalt roadway. Excavation of an area extending 1 foot north, 7 feet south, 2 feet east, and 2 feet west of the railroad rail revealed no further evidence of the corner. The area of excavation was offset toward the to the south due to the position of the old end post on the east side of the road, approximately 5 feet south of the rail. The position of the rail fit well with the center of County Road 450 North to the west. With no further evidence found, the position of the rail was held as marking the corner. The rail was removed and a Harrison monument was set in its place. This corner was originally established as a wood post in 1822.



Kenneth E. Hedge
 Kenneth E. Hedge, County Surveyor

James S. Swift
 James S. Swift, IN LS 20200054
 March 24, 2016

Clinton Township

Section 09 T19N, R1E	▲	Section 10 T19N, R1E
-------------------------	---	-------------------------

SECTION CORNER RECORD

NE 450-400

BOONE COUNTY SURVEYOR'S OFFICE

State Plane grid coordinates NAD83 (2011):

North: 1769602.04 East: 3145531.42 (U.S. survey feet)

Type of monument: Harrison, 4" disk 'Section Corner'

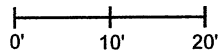
Depth: Flush with surrounding ground

Indiana tie card references:

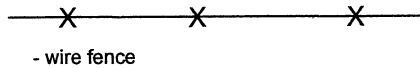
IN02_T19NR1E10_44 IN02_T19NR1E11_36

CORNER WITNESS DETAIL

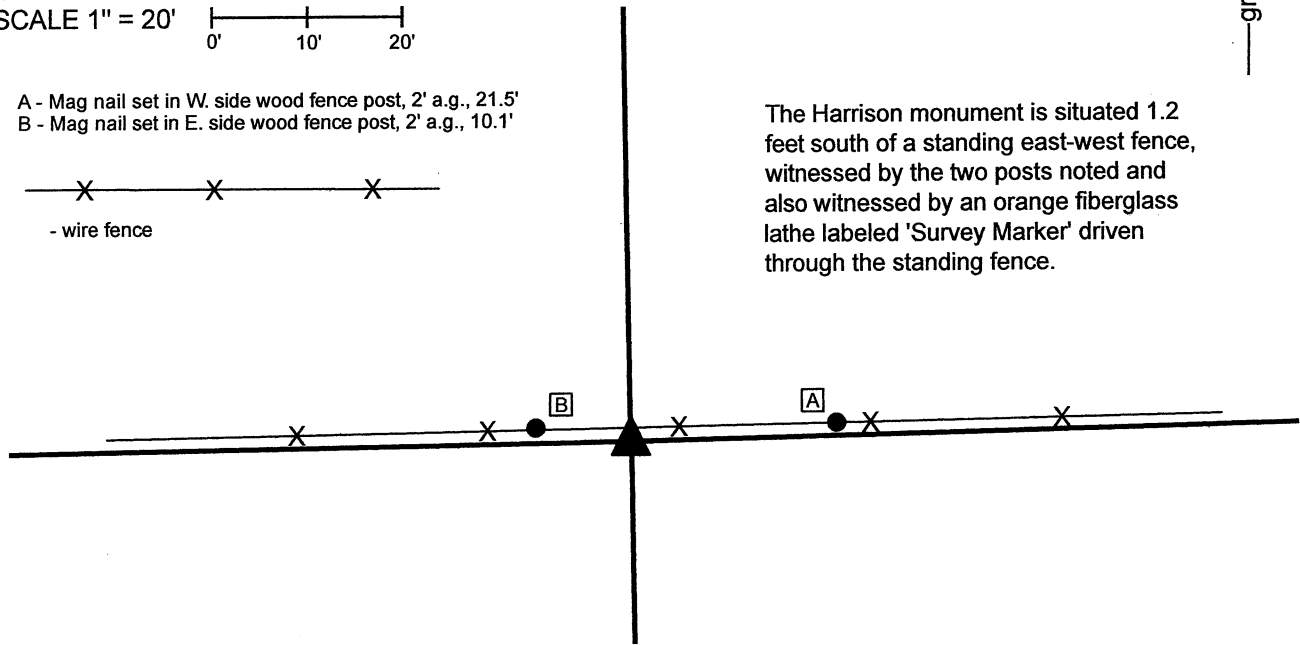
SCALE 1" = 20'



- A - Mag nail set in W. side wood fence post, 2' a.g., 21.5'
- B - Mag nail set in E. side wood fence post, 2' a.g., 10.1'



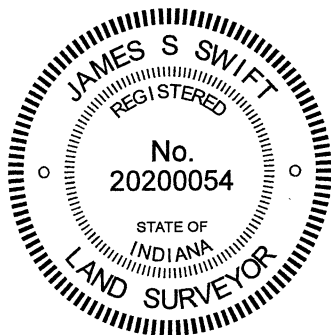
The Harrison monument is situated 1.2 feet south of a standing east-west fence, witnessed by the two posts noted and also witnessed by an orange fiberglass lathe labeled 'Survey Marker' driven through the standing fence.



The Harrison monument was set in place of a rebar found.

No specific descriptions of this corner were found in the BCS Surveyor's Record beyond the original establishment of the corner as a wood post in 1822. No recent BCS tie cards were found referencing the corner, nor were any surveys found in the Office of the Boone County Surveyor's Office found which reference the corner.

The position of this corner was investigated extensively in the Spring of 2018. At that time, a rebar with plastic cap stamped 'Weihe Engr. LS 10398' was found slightly south of the standing fence. Various accessory evidence was located and analyzed but no firm conclusion about the corner was reached at that time, as up to approximately six feet of uncertainty in the east-west dimension was noted with respect to potential positions for the corner based on accessory evidence of corner posts and roadways in the general vicinity of the corner. On November 10, 2021, it was observed that the position of the rebar fit precisely at a double-distance prolongation of a line connecting an ancient wood corner post found providing evidence of the center of section 10 and a stone found providing evidence of the northeast corner of the west half of the southeast quarter of section 10. Based on the findings of the previous investigation of this corner in 2018, this evidence appeared to be the most reliable, with the least uncertainty. As noted, the position of the rebar agrees precisely with this evidence. The rebar is south of a standing fence, but it clearly evident in the field that this is not an ancient fence. Exploratory manual excavation and probing also clearly indicates that a sub-surface drainage tile is situated on the south edge of the fence as well. Any ancient evidence of the corner in the form of stone or old corner post would have been removed during the installation of this field tile. Finding no contrary evidence which is sufficiently compelling to override the evidence of the rebar being in agreement with the aforementioned corner post and stone, the rebar was held as marking the corner. The rebar was removed and replaced with a Harrison monument in the same position on November 10, 2021.

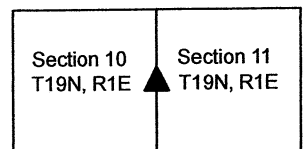


Kenneth E. Hedge
 Kenneth E. Hedge, County Surveyor

James S. Swift
 James S. Swift, IN LS 20200054

November 15, 2021

Clinton Township



SECTION CORNER RECORD

NE 500-300

BOONE COUNTY SURVEYOR'S OFFICE

State Plane grid coordinates NAD83 (2011):

North: 1772176.19 East: 3140370.63 (U.S. survey feet)

Type of monument: 5/8" diameter rebar, with aluminum cap stamped 'Boone County Surveyor'

Depth: Fourteen inches below surrounding ground

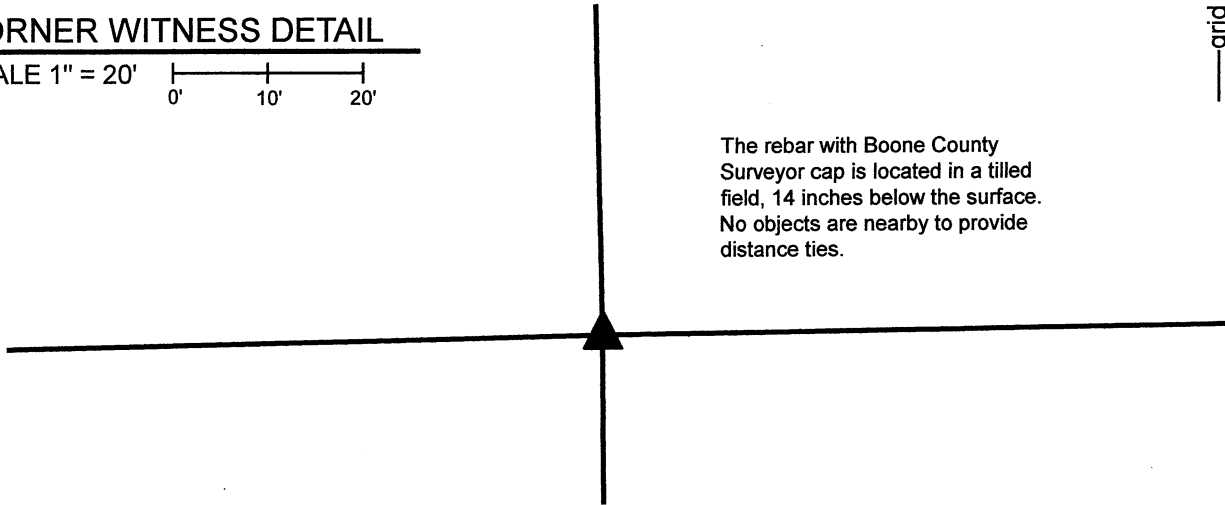
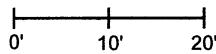
Indiana tie card references:

IN02_T19NR1E03_72 IN02_T19NR1E04_80

IN02_T19NR1E09_08 IN02_T19NR1E10_00

CORNER WITNESS DETAIL

SCALE 1" = 20'



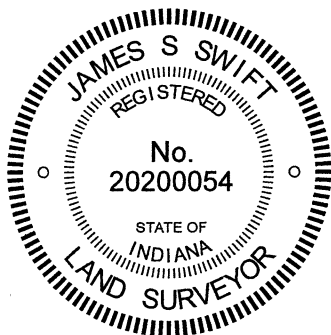
The rebar with Boone County Surveyor cap is located in a tilled field, 14 inches below the surface. No objects are nearby to provide distance ties.

The rebar with Boone County Surveyor cap was set at a computed position.

No specific descriptions of this corner were found the in BCS Surveyor's Record. No recent BCS tie cards were found, nor were surveys recorded in the Office of the Boone County Recorder found referencing the corner.

This corner falls in a tilled agricultural field and no physical evidence of the corner was found in the immediate vicinity. The corner is referenced in the deed for the property which surrounds it as well as in the exception for a property to the west. The description of a 19.0301-acre parcel included in Instruments 20150003498 and 2017004207 explicitly references this corner, as tied to the northwest and southeast corners of the northeast quarter of Section 9. These descriptions are clearly produced by modern survey, with bearings to the nearest second and distances to the nearest hundredth of a foot. The survey which created the descriptions was not found, but the described geometry fits precisely with the relative positions of the monuments at the southeast and northwest corners of the northeast quarter of Section 9 (see BCS Corners NE 500-250 and NE 450-300) as well as a 1/2-inch diameter rebar found in a slightly disturbed condition at a point on the east line of said northeast quarter, described as being 1327.34 feet south of the subject corner. Uncertainties of less than 0.2 foot in all directions were observed with respect to the relative positions of these three monuments and the geometry described in the calls of the 19.0301-acre tract. It is not known what evidence was held to determine the position of the corner at the time this description was created. However, evidence was not found which directly contradicts the position of the corner, as so described. Fencing which may have been along the south edge of a wooded area to the east of the corner appears to have been removed and no reliable, hard evidence of the line between the southwest quarter of Section 3 and northwest quarter of Section 10 was found. The 1/2-inch diameter rebar mentioned above was found along the line between the northeast quarter of Section 9 and northwest quarter of Section 10, as was fencing to the south and a north-segment of Elizaville Road.

The call for the subject corner in the deed descriptions referenced above was held as the best available evidence of the corner. The position of the corner was computed with respect to this call as explained above. A 30-inch length of 5/8-inch diameter rebar was set at this position of December 8, 2021. The rebar was set at 14 inches below grade to avoid being disturbed by agricultural equipment.



Kenneth E. Hedge

 Kenneth E. Hedge, County Surveyor

James S. Swift

 James S. Swift, IN LS 20200054
 December 15, 2021

Clinton Township

Section 4 T19N, R1E	Section 3 T19N, R1E
Section 9 T19N, R1E	Section 10 T19N, R1E

A 2x2 grid of sections. A small black triangle is positioned at the intersection of the bottom-left and bottom-right sections, pointing upwards.

SECTION CORNER RECORD

NE 500-350

BOONE COUNTY SURVEYOR'S OFFICE

State Plane grid coordinates NAD83 (CORS96):
North: 1772208.68 East: 3142939.97 (U.S. survey feet)

Type of monument: Harrison, 4" disk 'Section Corner'
Depth: six inches below adjacent gravel road surface

Indiana tie card references:
IN02_T19NR1E03_76
IN02_T19NR1E10_04

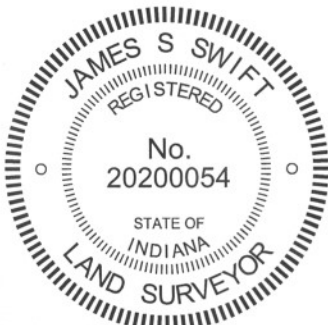
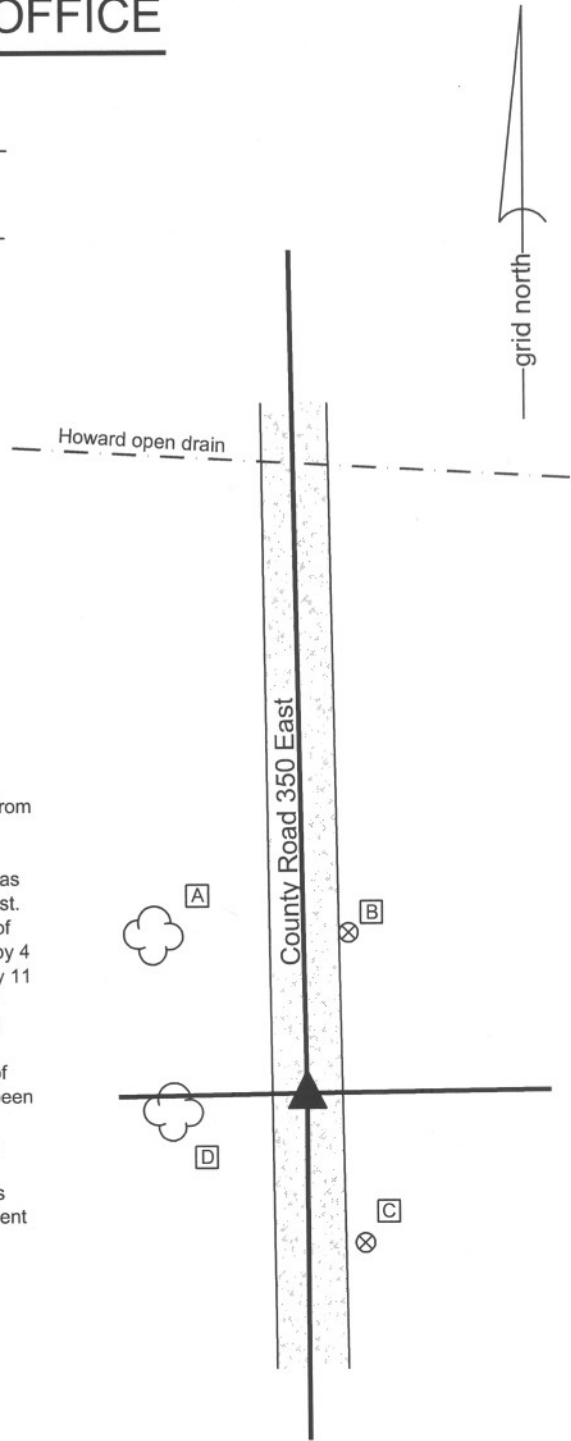
CORNER WITNESS DETAIL

SCALE 1" = 40'
0' 20' 40'

- A - East edge 10 inch diameter pine tree, 41.5'
- B - Boone County witness mark, flush, 34.72'
- C - Boone County witness mark, flush, 33.44'
- D - East edge, 10 inch diameter pine tree, 21.9'

Boone County witness mark is a 3/8" diameter x 2' long rebar bearing a metal cap stamped "Boone County Witness Point."

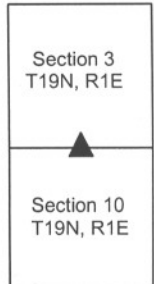
The harrison monument was set in place of a stone found.
 A BCS record of March 10, 1852 states "a stone." A undated BCS tie card, likely from the late 1960s, states "no stone." A BCS tie card dated June 15, 1975 states "no stone found - set rod."
 This corner was excavated on June 15, 2012. Prior to excavation, a railroad rail was found at the surface, generally vertical though leaning slightly towards the northwest. Excavation revealed a stone found at the surface, 3.6 feet north and 2.6 feet east of the rail. The stone had a distinct flat, top area measuring approximately 4 inches by 4 inches. The stone was removed and found to be 22 inches tall, 13 inches E-W by 11 inches N-S, as found. The stone was vertical and well embedded in the clay layer below the road bed, protruding approximately 6 inches out of the clay into the road bed. The total road bed is approximately 6 inches deep. No specific marks were found on the stone. It is noted that, given the position of the stone at the surface of the gravel road, any mark which may have been on the top, flat area would have been scraped off by road grading equipment. The stone was in the center of the north-south road, whereas the rail had been slightly to the west of the center. The stone was in line with the brush line to the east, though the two previous tie cards showed the corner as being in line with a fence to the east. The stone was held as marking the corner. The stone was removed and replaced with a harrison monument in the same position as the center of the flat top of the stone.
 This corner was originally established as a wood corner post in 1822.



Kenneth E. Hedge
 Kenneth E. Hedge, County Surveyor

James S. Swift
 James S. Swift, IN LS 20200054
 January 15, 2013

Clinton Twp



PHOTOGRAPHIC DOCUMENTATION

Date of photography: June 15, 2012

View of the stone from above and west.



View of the stone from above.



View from the south, looking across the stone and north along County Road 350 East.



View of the stone from the west. Note the railroad rail, removed during excavation.



For details and documentation, refer to related sheet "Section Corner Record."

SECTION CORNER RECORD

NE 500-400

BOONE COUNTY SURVEYOR'S OFFICE

State Plane grid coordinates NAD83 (2011):

North: 1772240.31 East: 3145512.40 (U.S. survey feet)

Type of monument: 24" length of 5/8-inch diameter rebar with aluminum cap stamped 'Boone County Surveyor'

Depth: Fourteen inches below surrounding ground

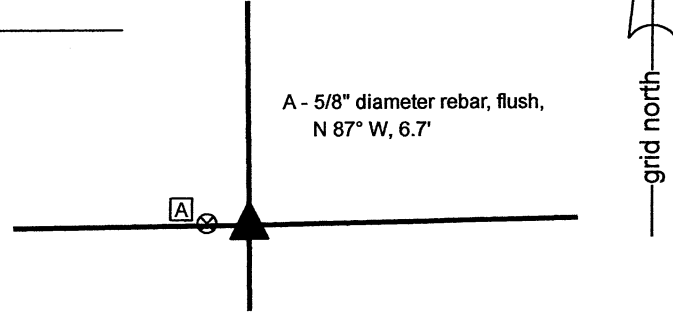
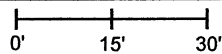
Indiana tie card references:

IN02_T19NR1E02_72 IN02_T19NR1E03_80

IN02_T19NR1E10_08 IN02_T19NR1E11_00

CORNER WITNESS DETAIL

SCALE 1" = 30'



The rebar with metal cap stamped 'Boone County Surveyor' was set at a computed position.

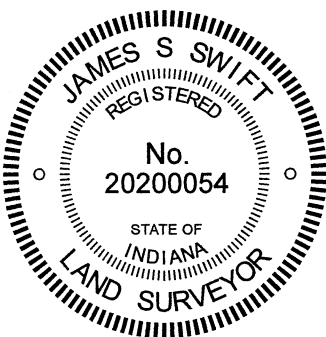
No specific descriptions of this corner were found in the BCS Surveyor's Record beyond the original establishment of the corner as a wood post in 1822.

No recent BCS tie cards were found referencing this corner, nor were any surveys recorded in the Office of the Boone County Recorder found specifically referencing the corner.

This corner has been investigated several times between 2017 and 2021. The corner falls in a tilled field. A 5/8-inch rebar was found in 2021. The rebar is flush with the ground with no cap and does not appear to be old. This rebar had not been found previously and no record of it being set was found in the county records. Evidence of the line between the southwest quarter of Section 2 and southeast quarter of Section 3 was found in the form of an old fence north of Elizaville Road, newer fencing south of the road and an iron pipe evidently marking the southeast corner Grinstead property in Section 3, Instrument 2015006355, Boone County Recorder. A monument called as being at the intersection of Elizaville Road and the east line of the southeast quarter of section 3 on a survey recorded as Instrument 2020012268 was not found. Evidence of the line between the southeast quarter of Section 3 and the northeast quarter of Section 10 was found in the form of steel t-post at an old fence intersection (wood corner post found on the ground nearby) west of Elizaville Road. Evidence of the line between the southwest quarter of Section 2 and the northwest quarter of Section 11 was found in the form of numerous wood posts and standing fence. The subject corner is also referenced in the description of the Jones property in Section 3, Instrument 2019001022. Rebars with metal caps stamped Carl Anderson ENGR were found marking or witnessing several corners of this property.

Based on analysis of the various evidence noted above, a position for the corner was computed at the intersection of the southerly prolongation of a line connecting the Harrison monument at the east quarter corner of Section 3 (see BCS Corner NE 550-400) through the iron pipe at the southeast corner of the Grinstead property and the westerly prolongation of a line connecting the Harrison monument at the south quarter corner of Section 2 (see BCS Corner NE 500-450) through wood posts found 320 feet and 565 feet, respectively, east of the computed position. This position falls 6.6 feet east and 0.5 foot south of the rebar found flush in the tilled field and falls 3.4 feet east of a position computed with respect to the found Anderson rebars and deed calls in Instrument 2019001022. The line between the southeast quarter of Section 3 and southwest quarter of Section 2, established by holding the computed position, fits remarkably well with the fencing found on each side of Elizaville Road. The line between the northeast quarter of Section 10 and the northwest quarter of Section 11 fits remarkably well with a post found on the north side of County Road 475 and the implied deed distance of 5 chains east of that line, per Instrument 200600002317. The post and fence evidence to the east and west also fit well with the computed position. A wood corner post found providing the local evidence of the northeast corner of the northwest quarter of the northwest quarter of Section 11 falls 4.8 feet south and 3.2 feet east of a computed midpoint. This variation represents the least best-fit of the evidence, but also supports the establishment of the corner as east of the found rebar and computed position with respect to the aforementioned Anderson rebars. It is noted that the deed for the property surrounding the corner, Starkey, was not found. The references to that document in the transfer books in the Boone County Auditors Office direct the researcher to the deed for a different property. Hence, the description of this property was not utilized in determining the position of the corner.

As noted above, the position for the corner was computed with respect the preponderance of physical evidence and dependent deed references. The computed position was held. A rebar with metal cap stamped 'Boone County Surveyor' was set at 14 inches deep in the tilled field on November 23, 2021. The existing rebar, flush with the field, was left in place and is noted as a reference tie.



Kenneth E. Hedge

 Kenneth E. Hedge, County Surveyor

James S. Swift

 James S. Swift, IN LS 20200054

December 1, 2021

Clinton Township

Section 3 T19N, R1E	Section 2 T19N, R1E
Section 10 T19N, R1E	Section 11 T19N, R1E