

SECTION CORNER RECORD

NW 400-950

BOONE COUNTY SURVEYOR'S OFFICE

State Plane grid coordinates NAD83 (2011):

North: 1766701.75 East: 3074536.61 (U.S. survey feet)

Type of monument: 5/8 inch rebar with metal cap stamped with 'Boone County Surveyor'

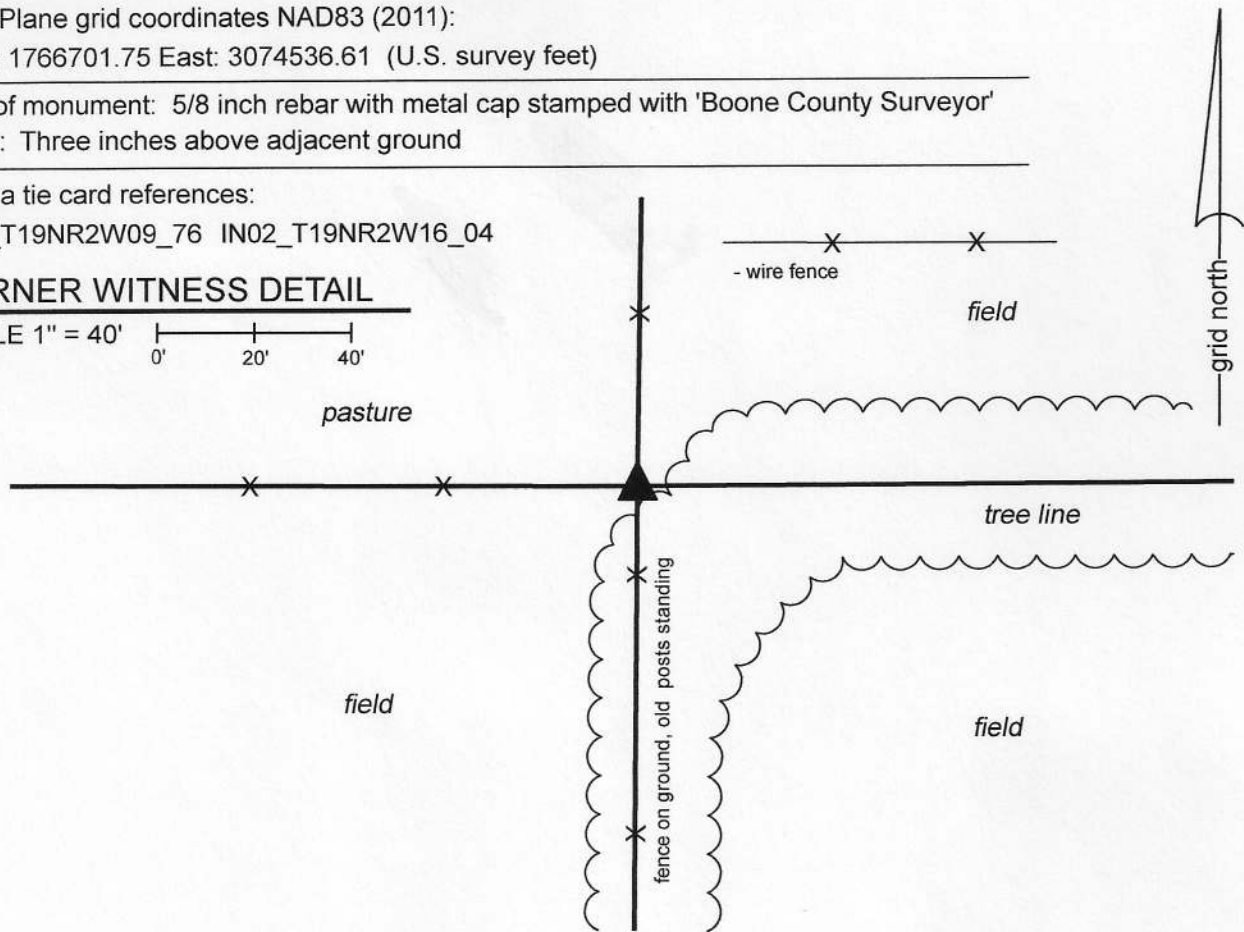
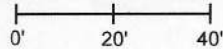
Depth: Three inches above adjacent ground

Indiana tie card references:

IN02_T19NR2W09_76 IN02_T19NR2W16_04

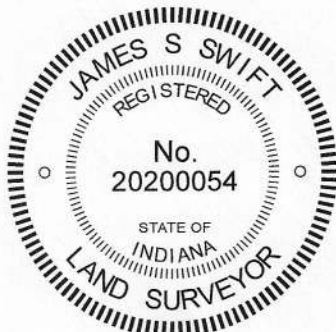
CORNER WITNESS DETAIL

SCALE 1" = 40'



The corner is marked by a 30 inch length of 5/8 inch rebar set in concrete and capped with a metal cap stamped 'Boone County Surveyor.' The rebar is adjacent to the east edge of a 7 inch round wood corner post. The rebar is intended to mark the corner and is not a witness monument. A BCS record of unknown date (between 1863 and 1912) states, with respect to this corner and other corners in section 16, "Run line from A east to a. Thence to B. Located, set rock + 11 1/2-8-5 bottom. set rock 8x9x5 +." It is noted that the corner 'B' refers to the subject corner. No recent BCS tie cards were found referencing the corner, nor were surveys found recorded in the Boone County Recorder's Office which reference the corner. This corner was excavated on April 1 and April 7, 2020. Prior to excavation, a wood corner post was observed at the intersection of standing, relatively new fence to the north and west and ancient fencing to the south. The fence to the south is mostly on the ground but numerous ancient wood posts are still standing, marking the specific location of the old fence. Manual excavation and extensive probing in the vicinity of the post revealed no rocks found. It was observed that an old square cedar post is lying on the ground approximately 4 feet east of the standing corner post, evidently having been removed from the ground and perhaps replaced with the newer post. The fate of the stones referenced in the undated record is not known. It is considered most likely that they were removed at the time the ancient corner post was replaced with the newer post. Although the fence to the west is relatively new, old corner posts were observed to remain standing, providing evidence of the aliquot corners approximately 1/8, 1/4 and 3/8 of a mile, respectively, to the west. Analysis of the relative positions of the old posts to the west and the line of old posts to the south yielded the conclusion that the most probable position of the corner is slightly east of the standing corner post. This position, being in-line with the posts to the south, was held as the specific position of the corner. Due to the proximity of the standing corner post, a Harrison monument could not be set at this position. The corner was marked by a 30 inch length of 5/8 inch rebar set in concrete and capped with a metal cap stamped 'Boone County Surveyor.' The center of the rebar is 0.16 foot east of the east edge of the standing post.

This corner was originally established as a wood post in 1829.



Kenneth E. Hedge
Kenneth E. Hedge, County Surveyor

James S. Swift
James S. Swift, IN LS 20200054

April 29, 2020

Sugar Creek
Township

Section 9
T19N, R2W

Jefferson
Township

Section 16
T19N, R2W

SECTION CORNER RECORD

NW 400-1000

BOONE COUNTY SURVEYOR'S OFFICE

State Plane grid coordinates NAD83 (2011):

North: 1766705.79 East: 3071885.80 (U.S. survey feet)

Type of monument: Harrison, 4" disk 'Section Corner'

Depth: Six inches below adjacent road surface

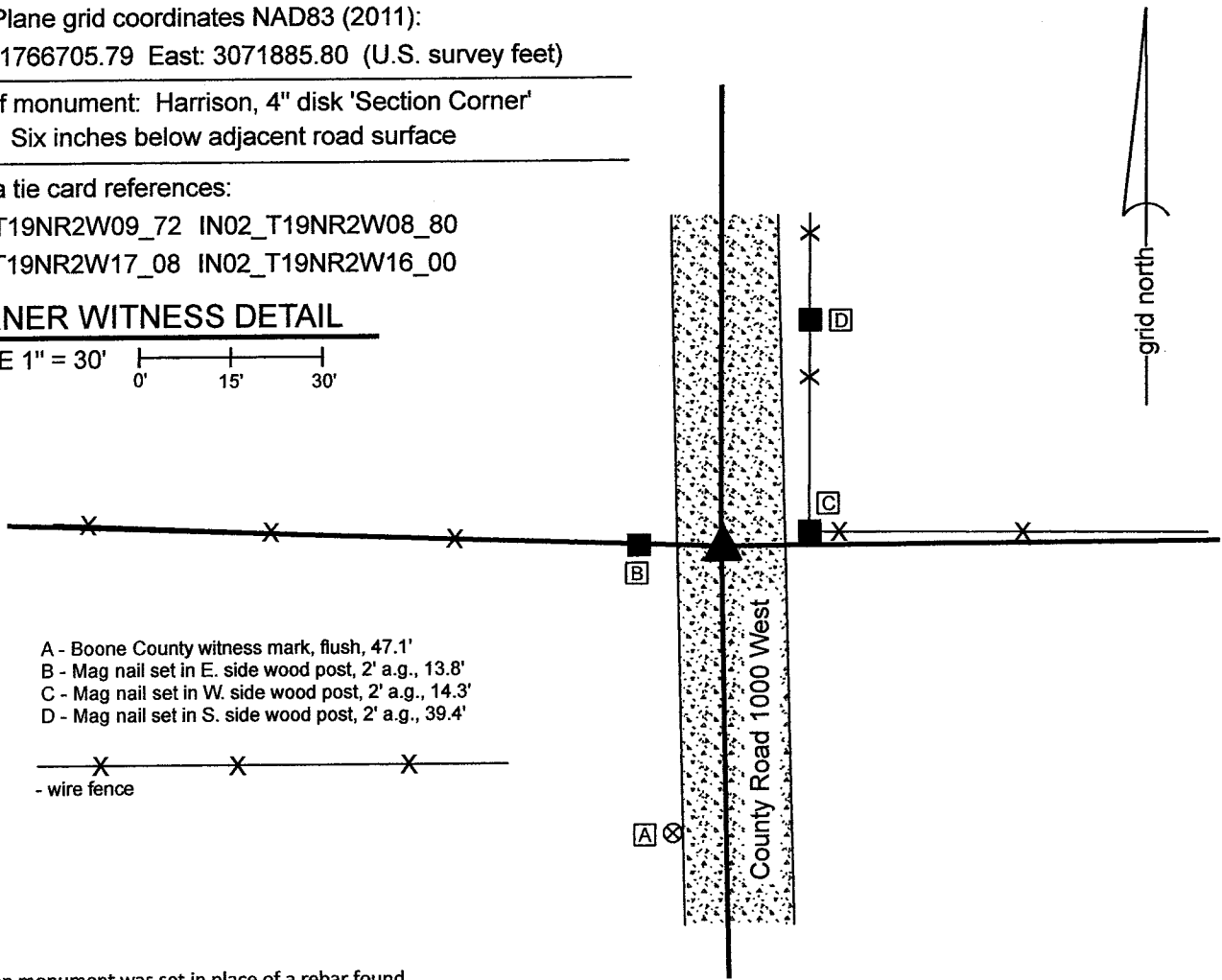
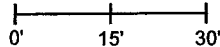
Indiana tie card references:

IN02_T19NR2W09_72 IN02_T19NR2W08_80

IN02_T19NR2W17_08 IN02_T19NR2W16_00

CORNER WITNESS DETAIL

SCALE 1" = 30'



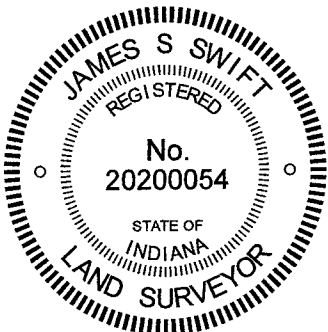
- A - Boone County witness mark, flush, 47.1'
- B - Mag nail set in E. side wood post, 2' a.g., 13.8'
- C - Mag nail set in W. side wood post, 2' a.g., 14.3'
- D - Mag nail set in S. side wood post, 2' a.g., 39.4'

- wire fence

The Harrison monument was set in place of a rebar found.

A BCS record of December 27, 1862 to January 3, 1863 states, with respect to this corner, "Reestablished from one tree. Set a Rock 23,17,12 marked +." A BCS tie card dated September 2, 1969 states "Stone Located. R/R Rail Set."

This corner was excavated on December 15, 2021. Prior to excavation, a rebar with orange plastic cap (markings illegible) was found at 2 inches deep in the center of the gravel roadway, opposite posts on both sides of the road and in-line with a fence to the east. Excavation did not reveal additional evidence of the corner. Per the 1969 tie card, it was expected that a section of railroad rail would be found, but no such monument was found. It was observed that the road bed in this immediate vicinity is only about 4 inches thick. The position of the found rebar fit with the local evidence of the corner and fit with the graphic representation of the corner on the 1969 tie card, being in the center of the road and in-line with the fences. The position of the rebar also fit with the distance ties to the posts on the east and west sides of the road, though it is noted that these posts appear that they may be newer than what was present in 1969. It is considered most likely that the stone called for in the 1863 record was removed in 1969 when the railroad rail was installed and that subsequently the rail was removed by road grading equipment. Surveys by Jerry L. Carter, LS S0350, recorded as Instrument 2003005080 and 2003005081 in the Office of the Boone County Recorder show the corner as a railroad rail. The position of the found rebar fits with the position of the rail shown on that survey, relative to other survey monuments shown thereon. The origin of the rebar is not known but it fits with the local evidence of the corner the 1969 tie card, and the 2003 surveys. The rebar was held as marking the corner and replaced with a Harrison monument. This corner was originally established as a wood post in 1829.



Kenneth E. Hedge
Kenneth E. Hedge, County Surveyor

James S. Swift
James S. Swift, IN LS 20200054
December 20, 2021

Sugar Creek Township

Jefferson Township

Section 8 T19N, R2W	Section 9 T19N, R2W
Section 17 T19N, R2W	Section 16 T19N, R2W

SECTION CORNER RECORD

NW 500-950

BOONE COUNTY SURVEYOR'S OFFICE

State Plane grid coordinates NAD83 (2011):

North: 1772011.00 East: 3074580.25 (U.S. survey feet)

Type of monument: Harrison, 4" disk 'Section Corner'

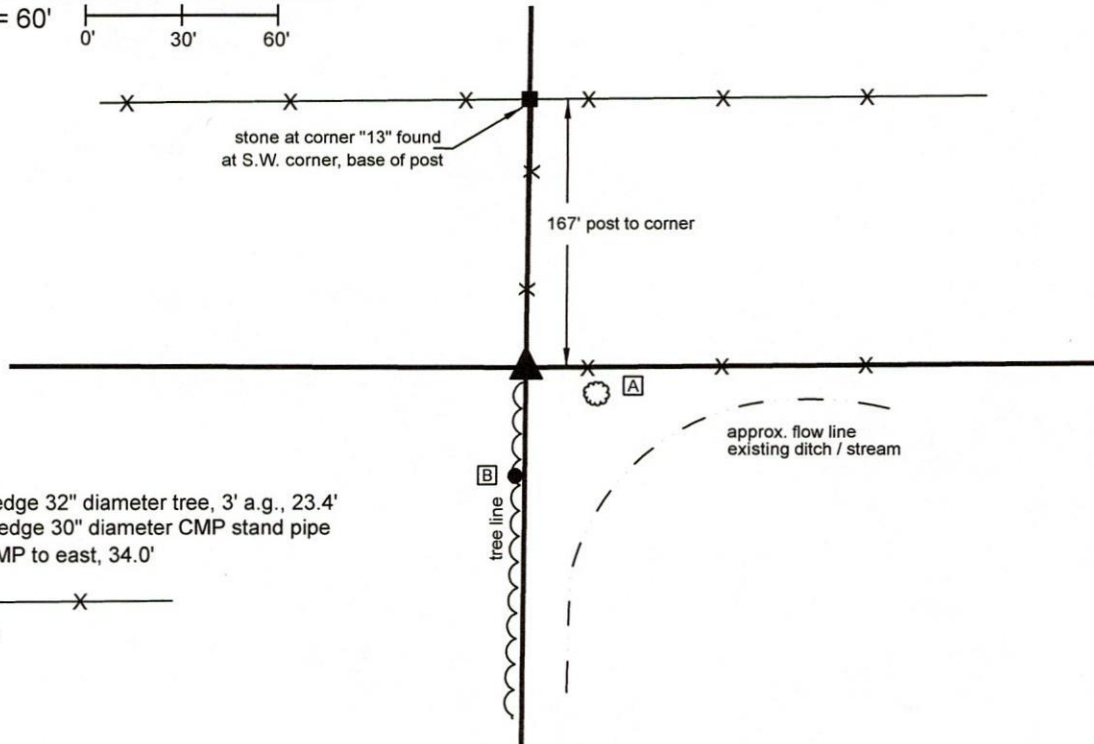
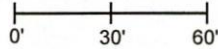
Depth: Two inches above ground to west, five inches to east

Indiana tie card references:

IN02_T19NR2W04_76 IN02_T19NR2W09_04

CORNER WITNESS DETAIL

SCALE 1" = 60'



- A - N.W. edge 32" diameter tree, 3' a.g., 23.4'
- B - North edge 30" diameter CMP stand pipe with CMP to east, 34.0'

- wire fence

The Harrison monument was set in place of the remnants of the base of a wood corner post found.

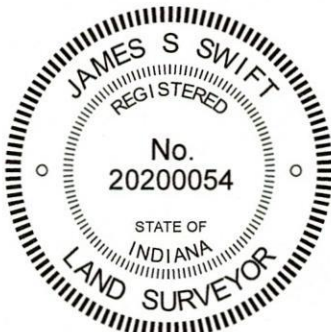
A BCS record dated March 14-15, 1895 states, with respect to this corner, "found from remains of Oak B.T. after intersecting lines & set 13." The record shows a distance of 2.50 chains from the corner to "13" which is described in the same record as being a stone 13.12.10 inches.

This corner was excavated on March 16 & 17, 2020. Prior to excavation, the intersection of old fences to the north and east, with a post and cut-off fence to the south was observed. On first sight, it appeared that the post for the fence to the north and east was north and east of the post for the fence to the south. Excavation revealed that the post for the fence to the north and east had been broken off and shifted to the east, and had been generally in-line with and slightly north of the post for the cut-off fence to the south. As the 1895 record ties the corner to a stone to the north, this position was also excavated. The stone described in the 1895 record was found 2 inches below grade at the southwest edge of a wood corner post at the intersection of fences to the south, east and west. No stones which were positively identifiable as corner stones were found in the immediate vicinity of the actual corner. The primary post, being the base of the post for the fences to the north and east was found to be 1.7 foot further away from the stone at corner "13" than was described in the 1895 record. No stone is described as being at the subject corner in the 1895 record. The base of the post for the old fences to the north and east was accepted as the best available evidence of the subject corner. It is noted that an uncertainty of 1.7 feet north-south exists with respect to this position and the relative position of the stone found at corner "13."

Sugar Creek Township

Section 4
T19N, R2W

Section 9
T19N, R2W



Kenneth E. Hedge
Kenneth E. Hedge, County Surveyor

James S. Swift
James S. Swift, IN LS 20200054

March 23, 2020