

SECTION CORNER RECORD

BOONE COUNTY SURVEYOR'S OFFICE

NE 400-200

State Plane grid coordinates NAD83 (2011):

North: 1766782.46 East: 3135113.83 (U.S. survey feet)

Type of monument: Harrison, 4" disk 'Section Corner'

Depth: Two inches above adjacent ground

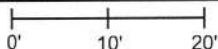
Indiana tie card references:

IN02_T19NR1E08_80 IN02_T19NR1E09_72

IN02_T19NR1E17_08 IN02_T19NR1E16_00

CORNER WITNESS DETAIL

SCALE 1" = 20'



orange plastic riser/breather for subterranean tile



An orange plastic perforated riser/breather for a subterranean tile is located 11.4 feet NNW of the monument. No other appropriate object are available to provide reliable distance ties.

The Harrison monument was set in place of a stone found.

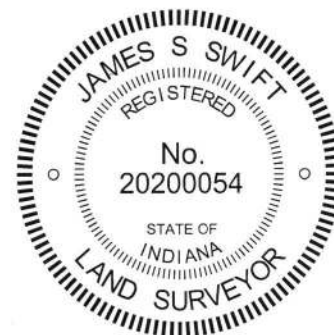
A BCS record dated April 22, 1880 states, with respect to this corner, "Reestablished. Tree has fallen but is here and retains mark. Set rock 15.9.9 + on top."

A BCS tie card dated August 16, 2005 shows the corner as a Harrison monument with no documentation of source. The tie card shows the Harrison as being set between a post and a N-S fence.

On July 18, 2014 excavators working for Ramsey Farm Drainage contacted the Boone County Surveyor's Office with information that they had just discovered a Harrison monument (bare with no concrete) amidst the material which had just been excavated and that they had hit a substantial sized rock. They recognized the monument as a survey marker and questioned whether the found rock was a corner stone marking a survey corner. I, James Swift, PS, went to the scene where I confirmed that the iron monument was indeed a Harrison monument and that the found stone which was exposed on the top and along its west side did appear to be a corner stone. The stone was not positively confirmed to match the dimensions of the 1880 stone. The position of the stone was determined with GPS equipment and the excavators continued their work which included removing the stone and installing a subterranean tile. The found stone was accepted as providing the best evidence of the corner.

On October 27, 2017 the stone was replaced with a new Harrison monument, set in durable fashion, in the same position. As noted, the 2005 Harrison had already been removed from the ground when the excavators noticed it, hence the position of the monument is reported per the coordinates on the tie sheet, with approximately 0.3 foot uncertainty in all directions. Per those coordinates, the new Harrison, set in place of the stone, is 0.5 foot south and 1.6 feet east of the position of the previous Harrison. Though the fencing has been removed in the immediate vicinity of the corner, the new monument is approximately 0.5 foot east of the longer N-S fence, as it yet exists north and south of the corner. The previous Harrison had been approximately 1 foot west of the fence.

This corner was originally established as a wood post in 1822.



Kenneth E. Hedge

 Kenneth E. Hedge, County Surveyor

James S. Swift

 James S. Swift, IN LS 20200054
 November 15, 2017

Clinton Township

Section 8
T19N, R1E

Section 9
T19N, R1E

Center Township

Section 17
T19N, R1E

Section 16
T19N, R1E

SECTION CORNER RECORD

NE 400-300

BOONE COUNTY SURVEYOR'S OFFICE

State Plane grid coordinates NAD83 (2011):
 North: 1766872.77 East: 3140390.85 (U.S. survey feet)

Type of monument: Harrison, 4" disk 'Section Corner'
 Depth: One inch below adjacent road surface

Indiana tie card references:
 IN02_T19NR1E09_80 IN02_T19NR1E10_72
 IN02_T19NR1E16_08 IN02_T19NR1E15_00

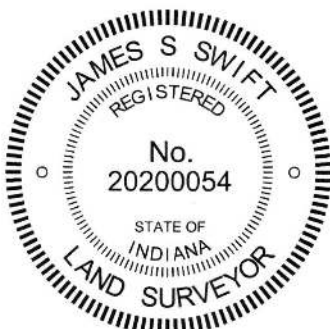
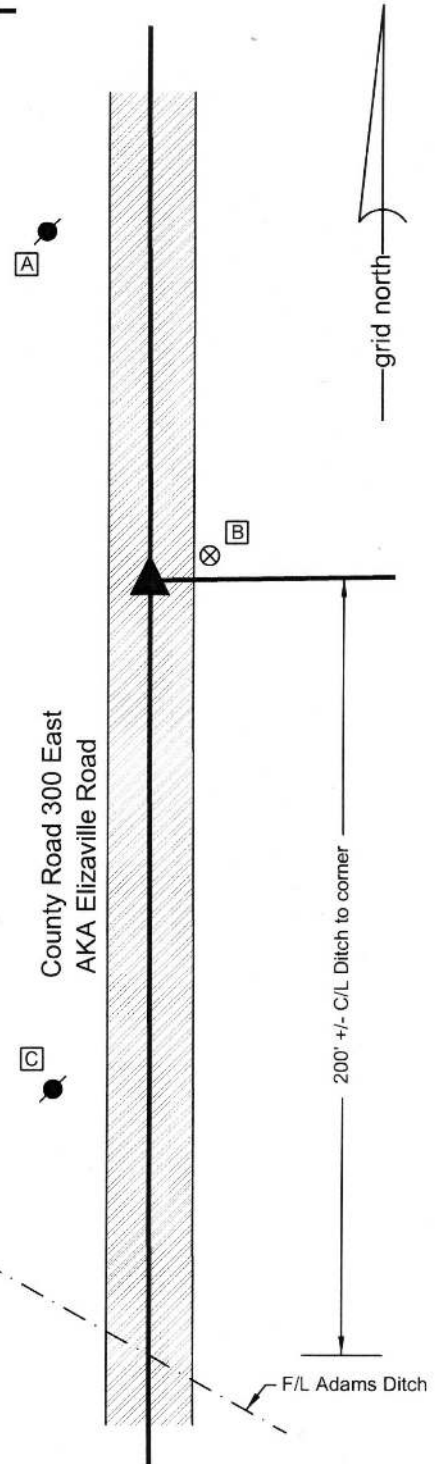
CORNER WITNESS DETAIL

SCALE 1" = 50'

- A - Mag nail set in S.E. side power pole, 2' a.g., 92.7'
- B - Boone County witness mark, flush, 16.8'
- C - Mag nail set in N.E. side power pole, 2' a.g., 132.2'

Boone County witness mark is a 3/8" diameter x 2' long rebar bearing a metal cap stamped "Boone County Witness Point."

The Harrison monument was set at a calculated position.
 No specific descriptions of this corner were found in the old BCS Surveyor's Record, nor were any recent BCS tie cards found referencing this corner. The corner is not shown as being monumented on private surveys recorded in the Boone County Recorder's Office. Also no evidence of the corner was found in the immediate vicinity of the corner except for the straight north-south roadway of County Road 300 East. This corner was excavated on October 16, 2013. No monuments were found prior to excavation. A calculated position for the corner was determined by extending the line of a fence providing evidence of the south line of the east half of the southwest quarter of section 10 west to the center of County Road 300 East, which point also fit with a position for the corner which was calculated by extending a line north from the east quarter corner of section 16 at double the distance from said quarter corner to the apparent southeast corner of the north half of the northeast quarter of section 16, as determined at the apparent intersection of the physical center of a straight E-W section of Elizaville Road with the physical center of County Road 300 East. Excavation of an area extending north 3 feet, south 3 feet, east 2 feet and west 2 feet yielded no evidence of the corner. The bottom of the road bed was found to be at 14 inches deep. Excavation extended to a minimum of 20 inches deep. A Harrison monument was set at the calculated position for the corner.



Kenneth E. Hedge
 Kenneth E. Hedge, County Surveyor

James S. Swift
 James S. Swift, IN LS 20200054
 March 24, 2016

Clinton Township

Center Township

Section 9 T19N, R1E	Section 10 T19N, R1E
Section 16 T19N, R1E	Section 15 T19N, R1E

SECTION CORNER RECORD

NE 450-200

BOONE COUNTY SURVEYOR'S OFFICE

State Plane grid coordinates NAD83 (CORS96):

North: 1769419.19 East: 3135116.83 (U.S. survey feet)

Type of monument: Harrison, 4" disk 'Section Corner'

Depth: six inches below adjacent gravel road surface

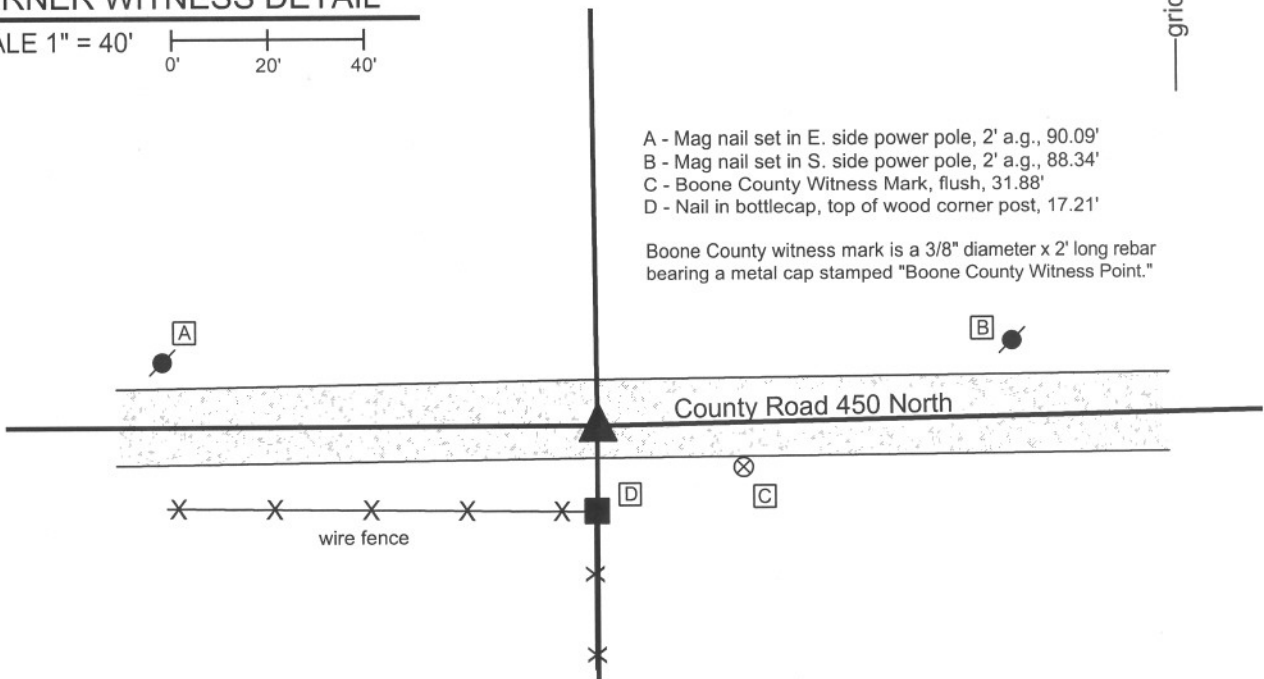
Indiana tie card references:

IN02_T19NR1E08_44

IN02_T19NR1E09_36

CORNER WITNESS DETAIL

SCALE 1" = 40'



- A - Mag nail set in E. side power pole, 2' a.g., 90.09'
- B - Mag nail set in S. side power pole, 2' a.g., 88.34'
- C - Boone County Witness Mark, flush, 31.88'
- D - Nail in bottlecap, top of wood corner post, 17.21'

Boone County witness mark is a 3/8" diameter x 2' long rebar bearing a metal cap stamped "Boone County Witness Point."

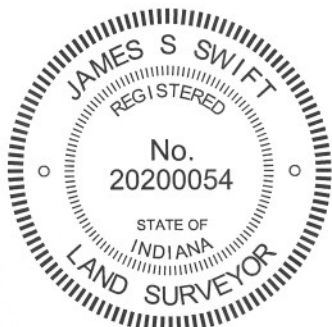
The harrison monument was set over a stone found.

A BCS record of April 22, 1880 states "A Rock 20.8.3 which was set stump of NW tree agrees. Marked the rock +." A BCS tie card dated July 1968 states "no stone." A BCS tie card dated June 11, 1975 states "found RR rail - no stone." A BCS tie card dated September 1, 2005 shows the corner as a rail found.

This corner was excavated on June 18, 2012. Prior to excavation a vertical section of railroad rail was found at 10 inches below grade. A 5/8 inch diameter rebar was also found at 2 inches below grade, 1.5 feet south and 0.75 foot east of the rail. Excavation revealed a stone found at 10 inches deep. The top of the stone is 8 inches E-W by 3 inches N-S. The top 12 inches of the stone were exposed. The top 10 inches of the stone appear to hold be the same E-W/N-S dimensions as the top, below which the stone become larger. The stone was vertical and fully embedded in the clay layer below the road, with the top of the stone at the bottom of the road bed. The top of the stone is generally flat with the top, center point of the stone being slightly higher than the rest of the top. No specific marks were found on the stone. The stone was accepted as being the same monument described in the 1880 record and was held as marking the corner. The stone was left in place with the top 12 inches encased in concrete. A harrison monument was broken off at 4 inches tall and set directly over the top center / high point of the stone.

The rebar had been 0.7 foot north of the stone. The rail had been 2.2 feet north and 0.75 foot west of the stone.

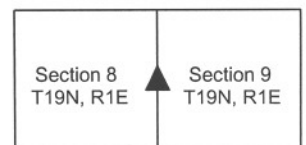
This corner was originally established as a wood post in June, 1822.



Kenneth E. Hedge
 Kenneth E. Hedge, County Surveyor

James S. Swift
 James S. Swift, IN LS 20200054
 January 15, 2013

Clinton Township



PHOTOGRAPHIC DOCUMENTATION

Date of photography: June 18, 2012

View of the stone from above and south.



View of the stone from above and west.



View from the north, looking across the stone and down the fence line to the south.



View from the east, looking across the stone and west along County Road 400 North.



For details and documentation, refer to related sheet "Section Corner Record."

SECTION CORNER RECORD

BOONE COUNTY SURVEYOR'S OFFICE

NE 450-300

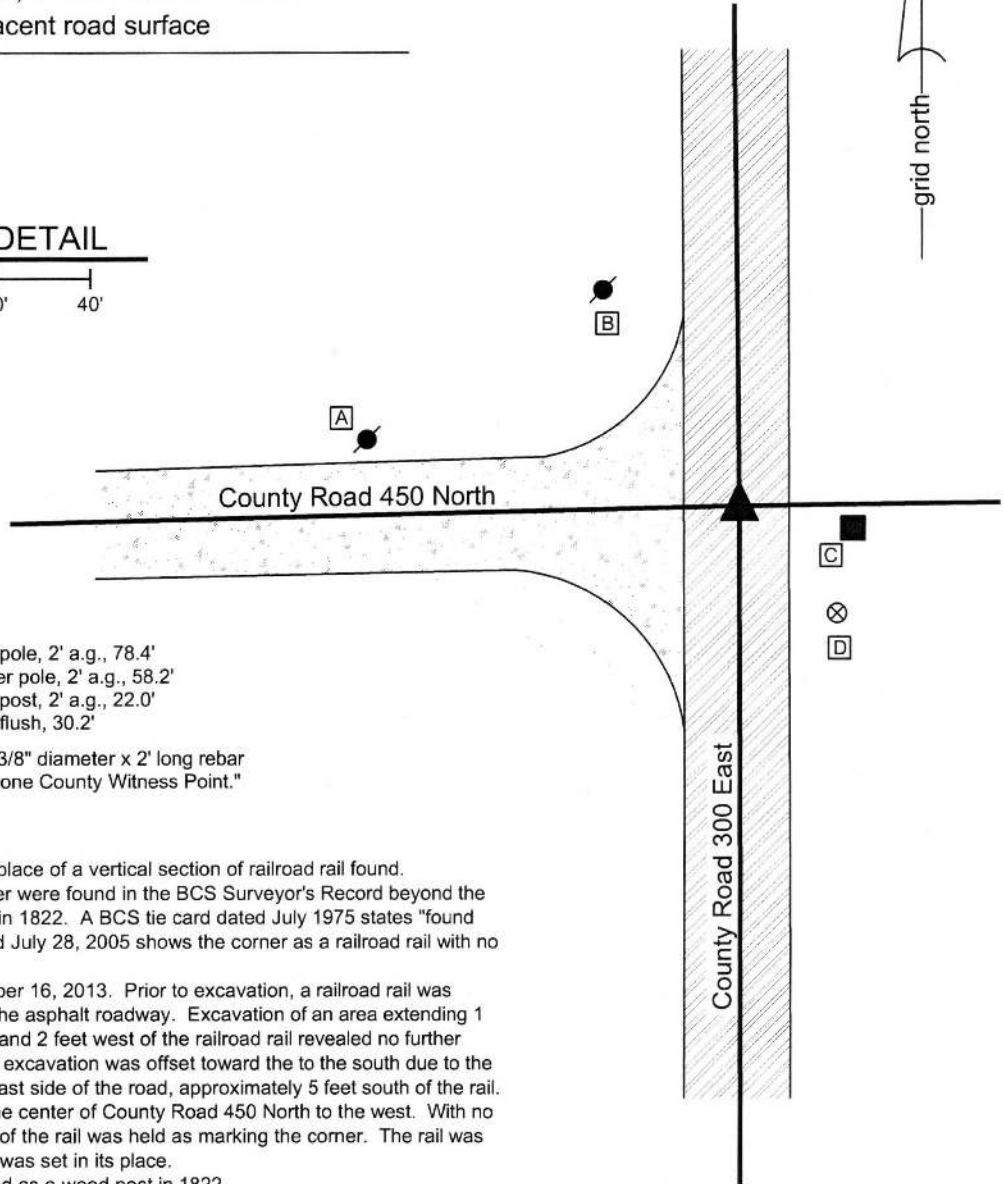
State Plane grid coordinates NAD83 (2011):
 North: 1769532.22 East: 3140382.94 (U.S. survey feet)

Type of monument: Harrison, 4" disk 'Section Corner'
 Depth: One inch below adjacent road surface

Indiana tie card references:
 IN02_T19NR1E09_44
 IN02_T19NR1E10_36

CORNER WITNESS DETAIL

SCALE 1" = 40'



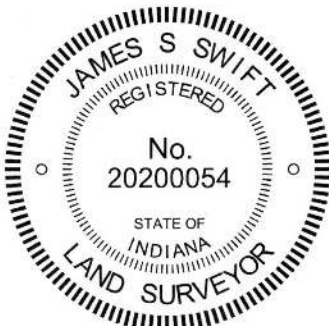
- A - Mag nail set in S. side power pole, 2' a.g., 78.4'
- B - Mag nail set in S.E. side power pole, 2' a.g., 58.2'
- C - Mag nail set in W. side wood post, 2' a.g., 22.0'
- D - Boone County witness mark, flush, 30.2'

Boone County witness mark is a 3/8" diameter x 2' long rebar bearing a metal cap stamped "Boone County Witness Point."

The Harrison monument was set in place of a vertical section of railroad rail found. No specific descriptions of this corner were found in the BCS Surveyor's Record beyond the original establishment of the corner in 1822. A BCS tie card dated July 1975 states "found spike in road." A BCS tie card dated July 28, 2005 shows the corner as a railroad rail with no documentation of source.

This corner was excavated on October 16, 2013. Prior to excavation, a railroad rail was found at 7 inches deep in a hole in the asphalt roadway. Excavation of an area extending 1 foot north, 7 feet south, 2 feet east, and 2 feet west of the railroad rail revealed no further evidence of the corner. The area of excavation was offset toward the to the south due to the position of the old end post on the east side of the road, approximately 5 feet south of the rail. The position of the rail fit well with the center of County Road 450 North to the west. With no further evidence found, the position of the rail was held as marking the corner. The rail was removed and a Harrison monument was set in its place.

This corner was originally established as a wood post in 1822.



Kenneth E. Hedge
 Kenneth E. Hedge, County Surveyor

James S. Swift
 James S. Swift, IN LS 20200054
 March 24, 2016

Clinton Township

Section 09 T19N, R1E	▲	Section 10 T19N, R1E
-------------------------	---	-------------------------

SECTION CORNER RECORD

NE 500-200

BOONE COUNTY SURVEYOR'S OFFICE

State Plane grid coordinates NAD83 (2011):

North: 1772067.21 East: 3135099.37 (U.S. survey feet)

Type of monument: Harrison, 4" disk 'Section Corner'

Depth: Two inches above adjacent ground.

Indiana tie card references:

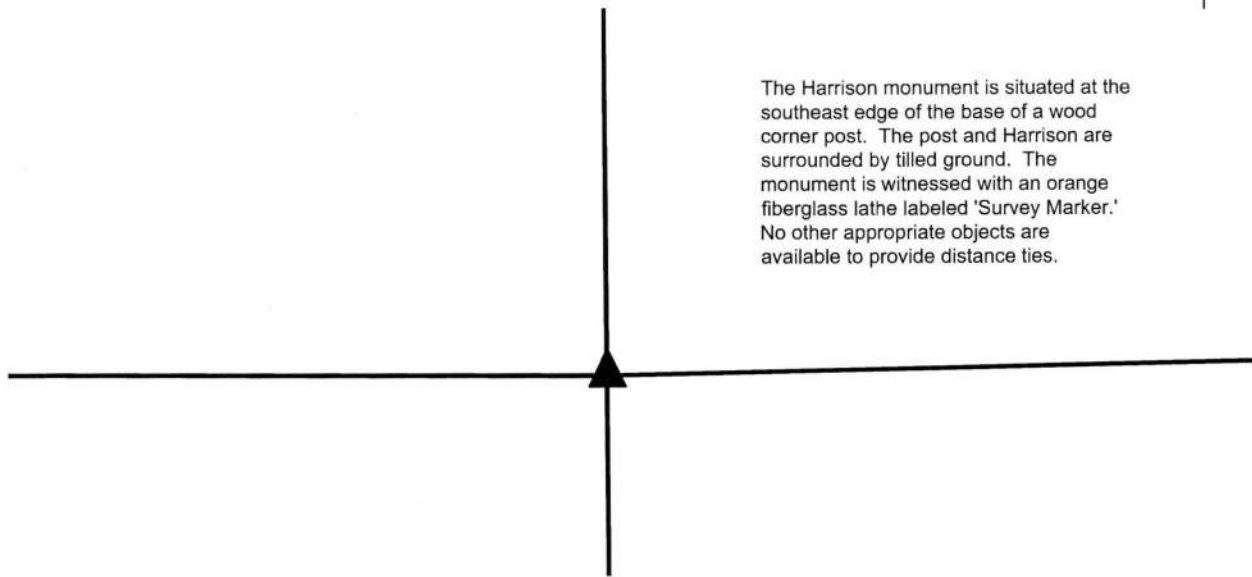
IN02_T19NR1E05_80 IN02_T19NR1E04_72

IN02_T19NR1E08_08 IN02_T19NR1E09_00



CORNER WITNESS DETAIL

No scale



The Harrison monument is situated at the southeast edge of the base of a wood corner post. The post and Harrison are surrounded by tilled ground. The monument is witnessed with an orange fiberglass lathe labeled 'Survey Marker.' No other appropriate objects are available to provide distance ties.

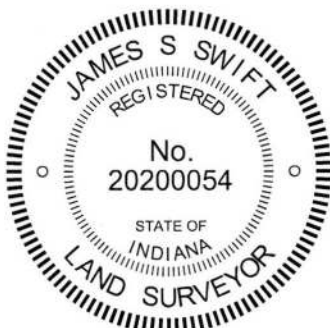
The Harrison monument was set in place of a stone found.

A BCS record of October 15, 1912 references a previous record of March 3, 1887 and states, with respect to this corner, "Re-est. from Oak witness, all gone except roots. Set Rock 10x16x12 +." No recent BCS tie cards were found referencing this corner.


Excavation was performed at this corner on November 28, 2017. Prior to excavation, a wood post was found with fencing cut off to the north, south and west, indicating the the post was formerly at the intersection of fences in those three directions. No standing fence is attached to the post and the post is isolated from other evidence, standing alone in the middle of a tilled field. The post is stable in the ground but leans substantially toward the northeast. The position of the post fits well with other corners, including another isolated post in the field 1/4 mile to the north. Excavation around the base of the post revealed a rock found at the southeast corner of the post. The stone was found to measure 10 inches by 16 inches by 7 inches. It is noted that a sheer edge exists on the rock, indicating the rock was previously of a larger size and split at some point. The dimensions of the rock are such that the sheer edge represents one edge which determines the 7 inch measurement. Hence, it is possible that the rock did previously match the 1887/1912 record dimensions, though that is not possible to confirm this without the remaining portion of the stone, which was not found.

The stone was held as marking the corner. The stone was removed and a Harrison monument was set in its place.

This corner was originally established as a wood post in 1821.




Kenneth E. Hedge, County Surveyor


James S. Swift, IN LS 20200054
January 10, 2018

Clinton Township

Section 5 T19N, R1E	Section 4 T19N, R1E
Section 8 T19N, R1E	Section 9 T19N, R1E

SECTION CORNER RECORD

BOONE COUNTY SURVEYOR'S OFFICE

NE 500-250

State Plane grid coordinates NAD83 (CORS96):

North: 1772118.05 East: 3137730.32 (U.S. survey feet)

Type of monument: Harrison, 4" disk 'Section Corner'

Depth: six inches below adjacent gravel road surface

Indiana tie card references:

IN02_T19NR1E04_76

IN02_T19NR1E09_04

CORNER WITNESS DETAIL

SCALE 1" = 40'



A - Boone County witness mark, flush, 18.38'

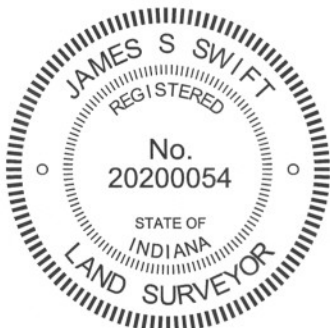
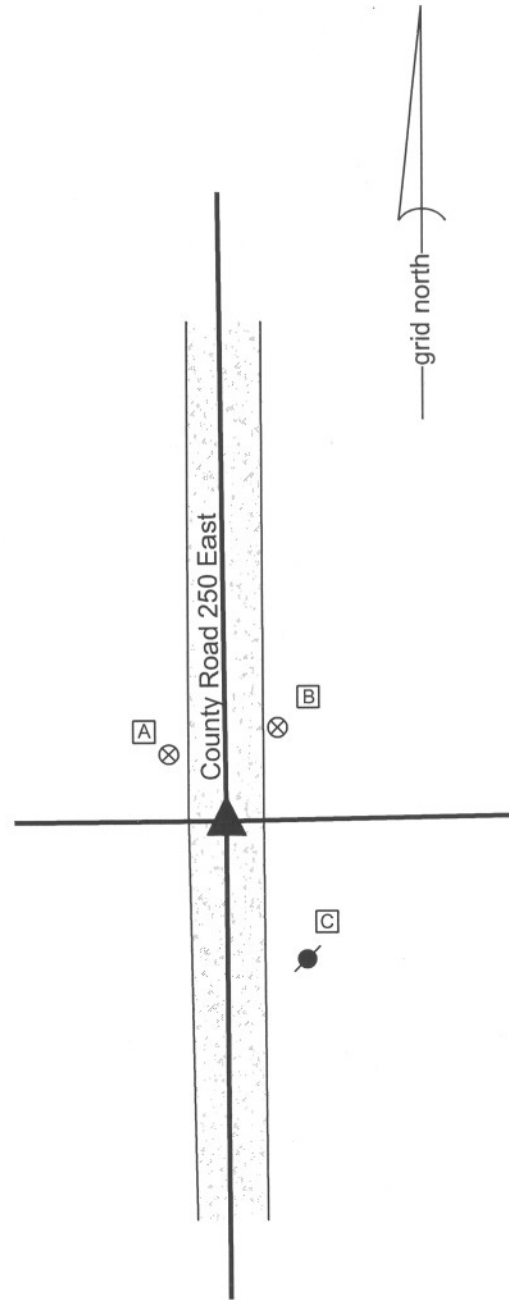
B - Boone County witness mark, flush, 22.29'

C - Mag nail set in N.W. side power pole, 2' a.g., 31.32'

Boone County witness mark is a 3/8" diameter x 2' long rebar bearing a metal cap stamped "Boone County Witness Point."

The harrison monument was set in place of a rebar and a section of railroad rail found. A BCS record of December 31, 1869 states "Re-est. Set a Rock 18.12.7 +. Beech bearing tree as before." A undated BCS tie card states "No stone." This tie card is likely from the late 1960s. A BCS tie card dated June 15, 1975 states "Stone found - set rod." A BCS tie card dated September 30, 2005 shows the corner as a railroad rail with no documentation of source.

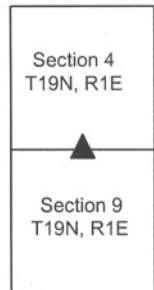
This corner was excavated on June 15, 2012. Prior to excavation a section of railroad rail was found at 2 inches below grade. The rail was clearly not vertical, leaning with the top towards the south. A 5/8 inch rebar was found at 9 inches north of the top of the rail. The rebar and the rail were removed, and it was determined that the rebar had been approximately over the bottom of the rail. No further evidence was found. It is most likely that the stone was removed in 1975 and replaced with the rebar, referred to as "rod" on the tie card. The rail was most likely set in association with the creation of the undated tie card. The undated tie card and the 1975 tie card both show the corner as being centered between posts on the east and west sides of the road. The coincident positions of the rail and rebar agree with these representations. However, it is not clear how the undated card called for "no stone" while the 1975 card called for a stone found. The road depth is minimal and the bottom of the rail was well below the depth at which a stone would be expected to be situated. Nonetheless, it is known that it was a common practice for BCS field crews in 1975 to remove a stone, if found, and replace it with a steel monument. The call for "stone found - set rod" supports this. The position of the rebar, as found, was held as marking the corner. Hence, the position of the bottom of the rail was also held as the corner, which point is 9 inches north of the position of the top of the rail and the representation of the corner on the 2005 tie card. All existing monuments were removed and replaced with a harrison monument in the position of the rebar. This corner was originally established as a wood post in June, 1822.



Kenneth E. Hedge
 Kenneth E. Hedge, County Surveyor

James S. Swift
 James S. Swift, IN LS 20200054
 January 15, 2013

Clinton Twp



SECTION CORNER RECORD

NE 500-300

BOONE COUNTY SURVEYOR'S OFFICE

State Plane grid coordinates NAD83 (2011):

North: 1772176.19 East: 3140370.63 (U.S. survey feet)

Type of monument: 5/8" diameter rebar, with aluminum cap stamped 'Boone County Surveyor'

Depth: Fourteen inches below surrounding ground

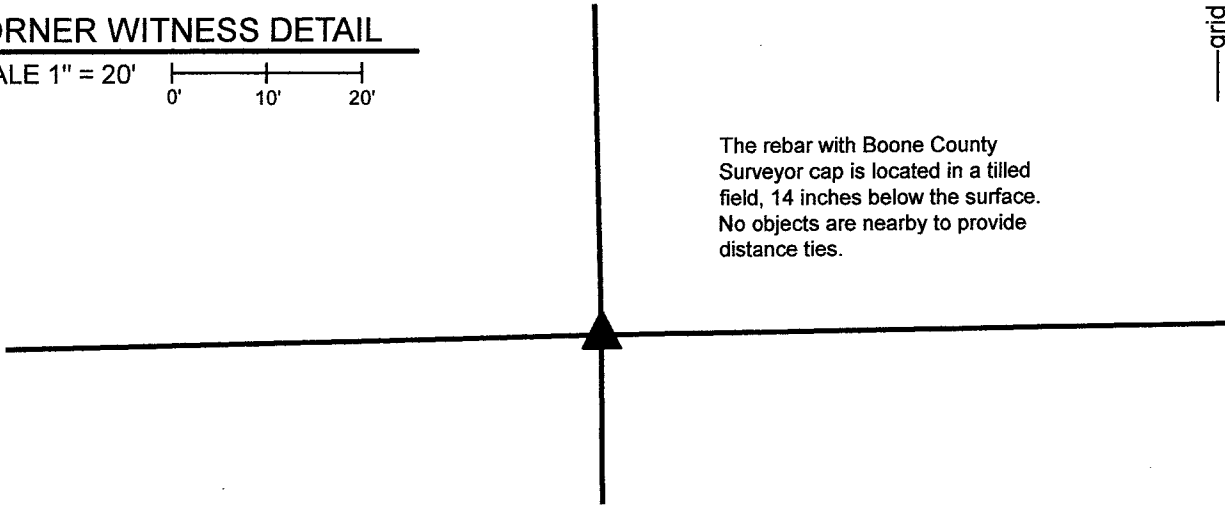
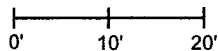
Indiana tie card references:

IN02_T19NR1E03_72 IN02_T19NR1E04_80

IN02_T19NR1E09_08 IN02_T19NR1E10_00

CORNER WITNESS DETAIL

SCALE 1" = 20'



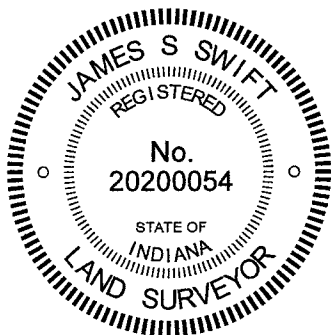
The rebar with Boone County Surveyor cap is located in a tilled field, 14 inches below the surface. No objects are nearby to provide distance ties.

The rebar with Boone County Surveyor cap was set at a computed position.

No specific descriptions of this corner were found in the BCS Surveyor's Record. No recent BCS tie cards were found, nor were surveys recorded in the Office of the Boone County Recorder found referencing the corner.

This corner falls in a tilled agricultural field and no physical evidence of the corner was found in the immediate vicinity. The corner is referenced in the deed for the property which surrounds it as well as in the exception for a property to the west. The description of a 19.0301-acre parcel included in Instruments 20150003498 and 2017004207 explicitly references this corner, as tied to the northwest and southeast corners of the northeast quarter of Section 9. These descriptions are clearly produced by modern survey, with bearings to the nearest second and distances to the nearest hundredth of a foot. The survey which created the descriptions was not found, but the described geometry fits precisely with the relative positions of the monuments at the southeast and northwest corners of the northeast quarter of Section 9 (see BCS Corners NE 500-250 and NE 450-300) as well as a 1/2-inch diameter rebar found in a slightly disturbed condition at a point on the east line of said northeast quarter, described as being 1327.34 feet south of the subject corner. Uncertainties of less than 0.2 foot in all directions were observed with respect to the relative positions of these three monuments and the geometry described in the calls of the 19.0301-acre tract. It is not known what evidence was held to determine the position of the corner at the time this description was created. However, evidence was not found which directly contradicts the position of the corner, as so described. Fencing which may have been along the south edge of a wooded area to the east of the corner appears to have been removed and no reliable, hard evidence of the line between the southwest quarter of Section 3 and northwest quarter of Section 10 was found. The 1/2-inch diameter rebar mentioned above was found along the line between the northeast quarter of Section 9 and northwest quarter of Section 10, as was fencing to the south and a north-segment of Elizaville Road.

The call for the subject corner in the deed descriptions referenced above was held as the best available evidence of the corner. The position of the corner was computed with respect to this call as explained above. A 30-inch length of 5/8-inch diameter rebar was set at this position of December 8, 2021. The rebar was set at 14 inches below grade to avoid being disturbed by agricultural equipment.



Kenneth E. Hedge

 Kenneth E. Hedge, County Surveyor

James S. Swift

 James S. Swift, IN LS 20200054
 December 15, 2021

Clinton Township

Section 4 T19N, R1E	Section 3 T19N, R1E
Section 9 T19N, R1E	Section 10 T19N, R1E

An arrow points to the intersection of Section 9 and Section 10.