

SECTION CORNER RECORD

NW 300-950

BOONE COUNTY SURVEYOR'S OFFICE

State Plane grid coordinates NAD83 (2011):
North: 1761397.99 East: 3074566.54 (U.S. survey feet)

Type of monument: Harrison, 4" disk 'Section Corner'
Depth: Two inches above surrounding ground

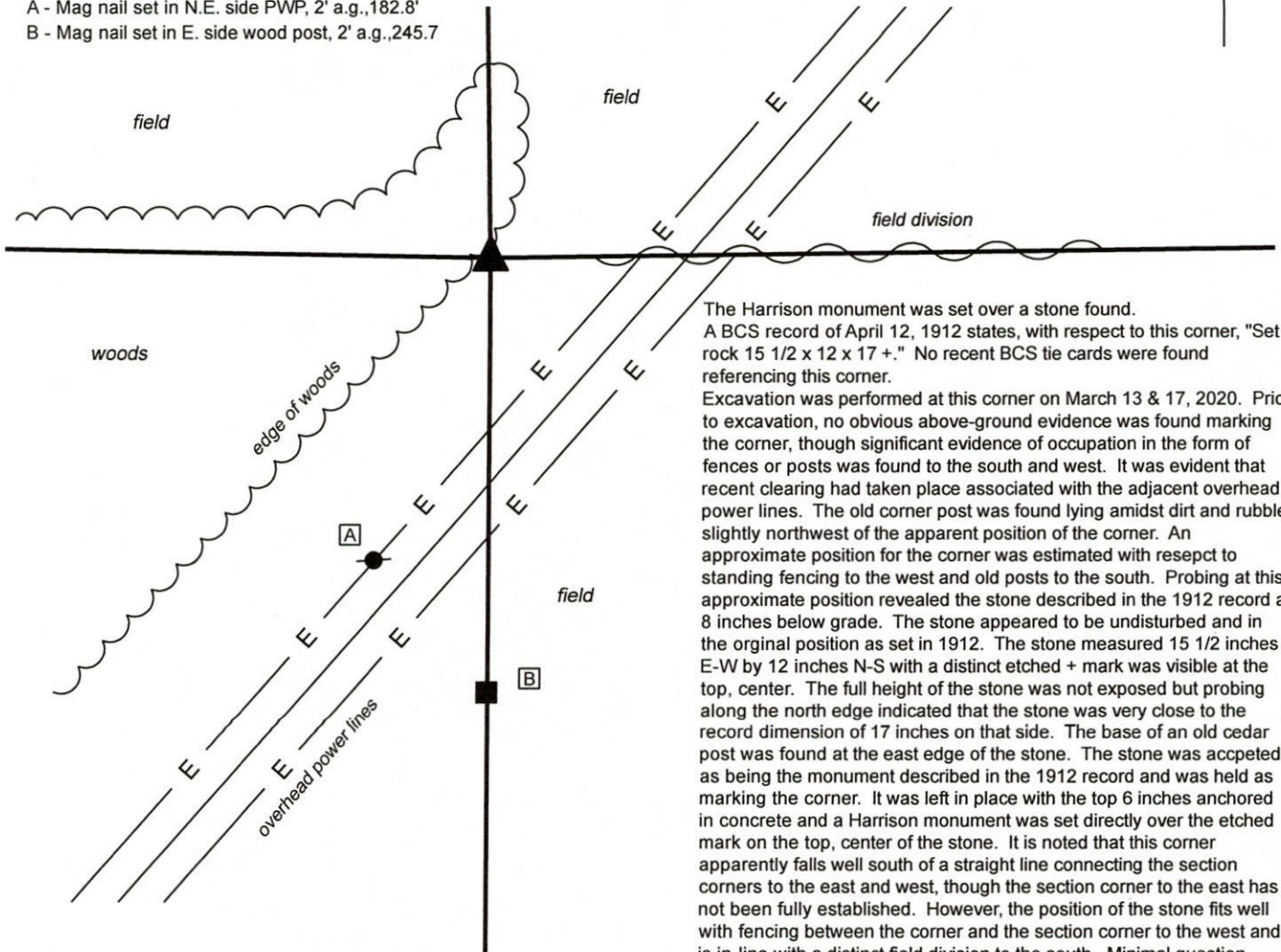
Indiana tie card references:
IN02_T19NR2W16_76 IN02_T19NR2W21_04

CORNER WITNESS DETAIL

SCALE 1" = 100'
0' 50' 100'



- A - Mag nail set in N.E. side PWP, 2' a.g., 182.8'
- B - Mag nail set in E. side wood post, 2' a.g., 245.7



The Harrison monument was set over a stone found. A BCS record of April 12, 1912 states, with respect to this corner, "Set rock 15 1/2 x 12 x 17 +." No recent BCS tie cards were found referencing this corner.

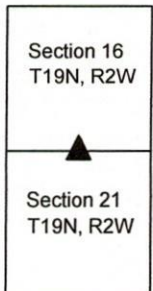
Excavation was performed at this corner on March 13 & 17, 2020. Prior to excavation, no obvious above-ground evidence was found marking the corner, though significant evidence of occupation in the form of fences or posts was found to the south and west. It was evident that recent clearing had taken place associated with the adjacent overhead power lines. The old corner post was found lying amidst dirt and rubble slightly northwest of the apparent position of the corner. An approximate position for the corner was estimated with respect to standing fencing to the west and old posts to the south. Probing at this approximate position revealed the stone described in the 1912 record at 8 inches below grade. The stone appeared to be undisturbed and in the original position as set in 1912. The stone measured 15 1/2 inches E-W by 12 inches N-S with a distinct etched + mark was visible at the top, center. The full height of the stone was not exposed but probing along the north edge indicated that the stone was very close to the record dimension of 17 inches on that side. The base of an old cedar post was found at the east edge of the stone. The stone was accepted as being the monument described in the 1912 record and was held as marking the corner. It was left in place with the top 6 inches anchored in concrete and a Harrison monument was set directly over the etched mark on the top, center of the stone. It is noted that this corner apparently falls well south of a straight line connecting the section corners to the east and west, though the section corner to the east has not been fully established. However, the position of the stone fits well with fencing between the corner and the section corner to the west and is in-line with a distinct field division to the south. Minimal question exists as to whether this is the position established in 1912. This corner was originally established as a wood post in 1829.



Kenneth E. Hedge
Kenneth E. Hedge, County Surveyor

James S. Swift
James S. Swift, IN LS 20200054
March 23, 2020

Jefferson Township



SECTION CORNER RECORD

NW 400-1000

BOONE COUNTY SURVEYOR'S OFFICE

State Plane grid coordinates NAD83 (2011):

North: 1766705.79 East: 3071885.80 (U.S. survey feet)

Type of monument: Harrison, 4" disk 'Section Corner'

Depth: Six inches below adjacent road surface

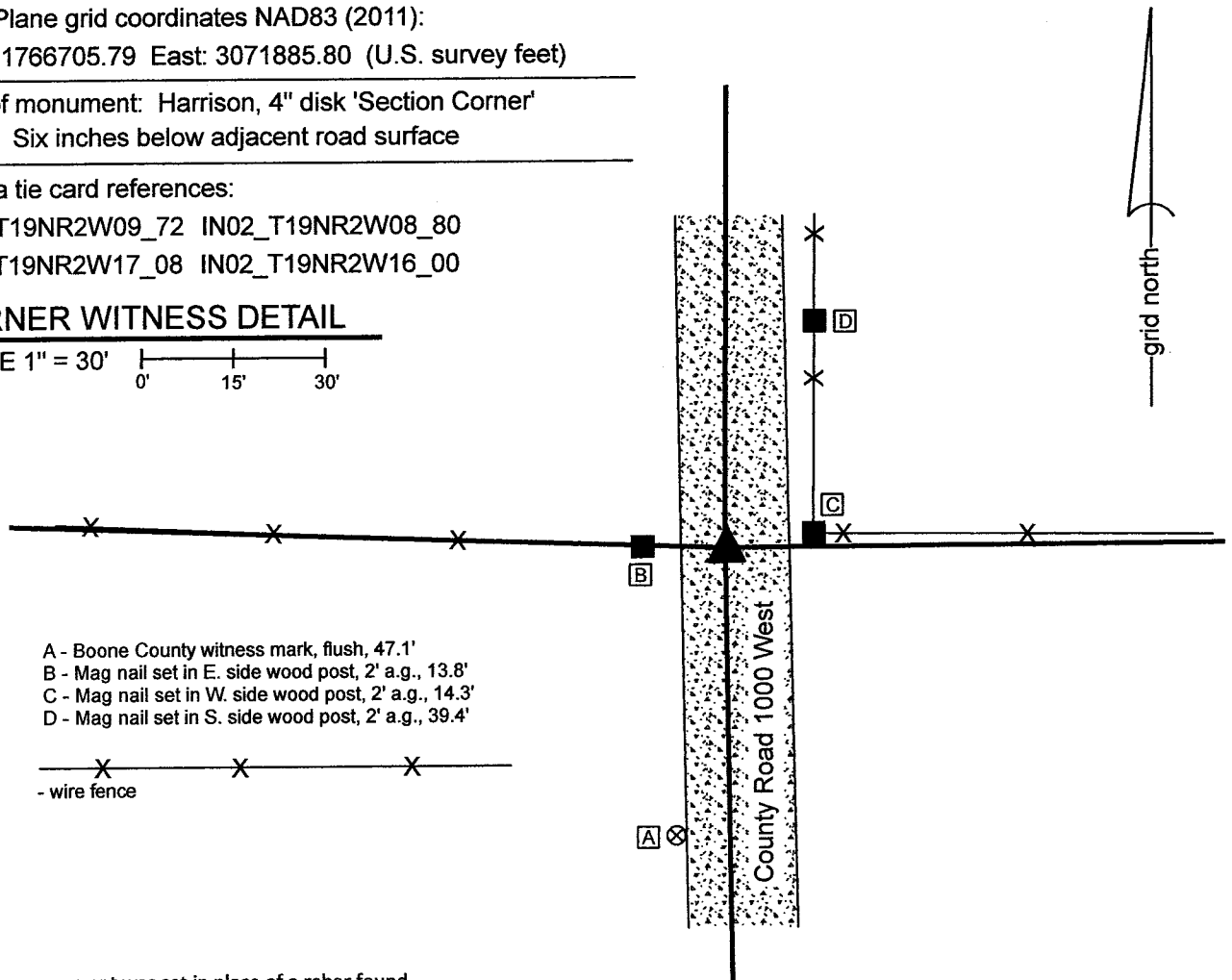
Indiana tie card references:

IN02_T19NR2W09_72 IN02_T19NR2W08_80

IN02_T19NR2W17_08 IN02_T19NR2W16_00

CORNER WITNESS DETAIL

SCALE 1" = 30'



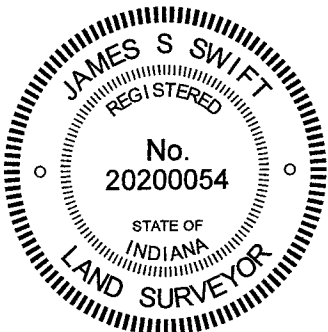
- A - Boone County witness mark, flush, 47.1'
- B - Mag nail set in E. side wood post, 2' a.g., 13.8'
- C - Mag nail set in W. side wood post, 2' a.g., 14.3'
- D - Mag nail set in S. side wood post, 2' a.g., 39.4'

- wire fence

The Harrison monument was set in place of a rebar found.

A BCS record of December 27, 1862 to January 3, 1863 states, with respect to this corner, "Reestablished from one tree. Set a Rock 23,17,12 marked +." A BCS tie card dated September 2, 1969 states "Stone Located. R/R Rail Set."

This corner was excavated on December 15, 2021. Prior to excavation, a rebar with orange plastic cap (markings illegible) was found at 2 inches deep in the center of the gravel roadway, opposite posts on both sides of the road and in-line with a fence to the east. Excavation did not reveal additional evidence of the corner. Per the 1969 tie card, it was expected that a section of railroad rail would be found, but no such monument was found. It was observed that the road bed in this immediate vicinity is only about 4 inches thick. The position of the found rebar fit with the local evidence of the corner and fit with the graphic representation of the corner on the 1969 tie card, being in the center of the road and in-line with the fences. The position of the rebar also fit with the distance ties to the posts on the east and west sides of the road, though it is noted that these posts appear that they may be newer than what was present in 1969. It is considered most likely that the stone called for in the 1863 record was removed in 1969 when the railroad rail was installed and that subsequently the rail was removed by road grading equipment. Surveys by Jerry L. Carter, LS S0350, recorded as Instrument 2003005080 and 2003005081 in the Office of the Boone County Recorder show the corner as a railroad rail. The position of the found rebar fits with the position of the rail shown on that survey, relative to other survey monuments shown thereon. The origin of the rebar is not known but it fits with the local evidence of the corner the 1969 tie card, and the 2003 surveys. The rebar was held as marking the corner and replaced with a Harrison monument. This corner was originally established as a wood post in 1829.



Kenneth E. Hedge
Kenneth E. Hedge, County Surveyor

James S. Swift
James S. Swift, IN LS 20200054
December 20, 2021

Sugar Creek Township

Jefferson Township

Section 8 T19N, R2W	Section 9 T19N, R2W
Section 17 T19N, R2W	Section 16 T19N, R2W

SECTION CORNER RECORD

NW 500-1050

BOONE COUNTY SURVEYOR'S OFFICE

State Plane grid coordinates NAD83 (2011):

North: 1772098.28 East: 3069286.57 (U.S. survey feet)

Type of monument: Harrison, 4" disk 'Section Corner'

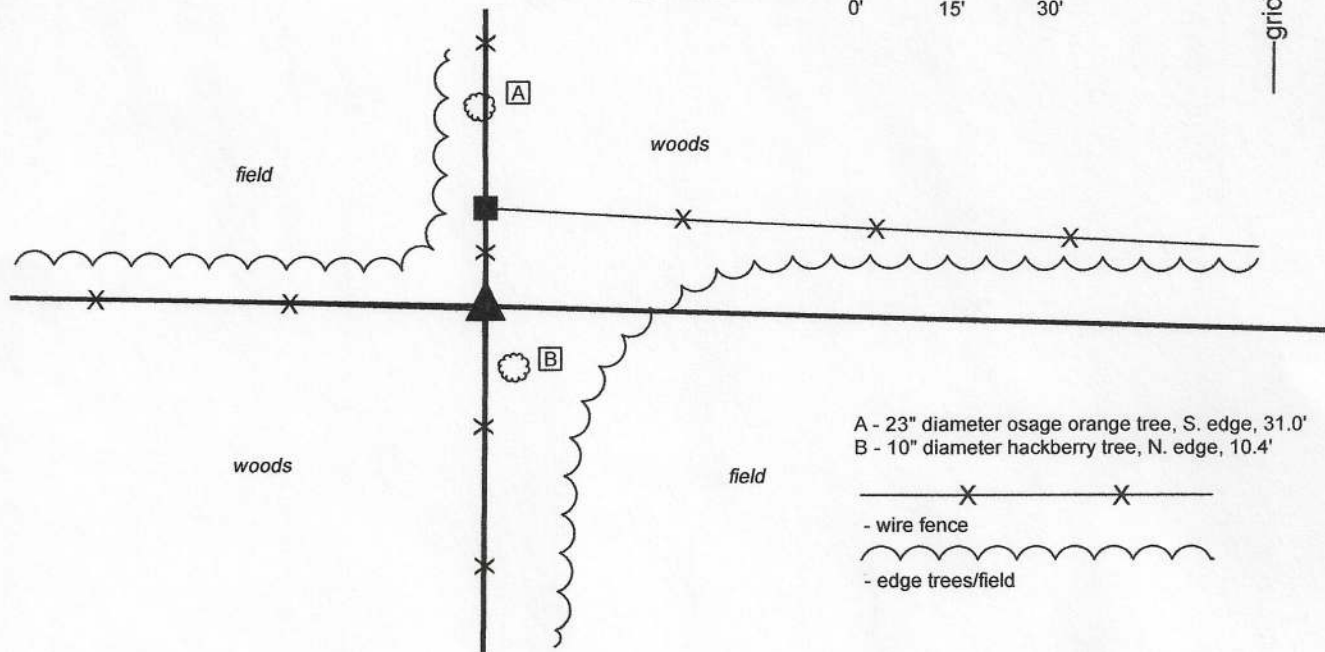
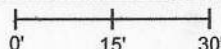
Depth: Two inches above adjacent ground

Indiana tie card references:

IN02_T19NR2W05_76 IN02_T19NR2W08_04

CORNER WITNESS DETAIL

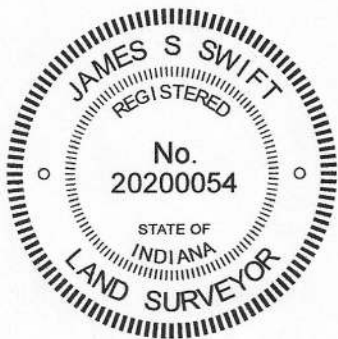
SCALE 1" = 30'



The Harrison monument was set in place of a stone found.

No specific descriptions of this corner were found in the BCS Surveyor's Record beyond the original establishment of the corner as a wood post in 1829. No recent BCS tie cards were found referencing the corner. A survey recorded as Instrument 0209862 in the Office of the Boone County Recorder shows the corner as a wood headpost.

This corner was excavated on April 7, 2020. Prior to excavation, a wood corner post in the same position as is shown on the aforementioned survey was found at the intersection of ancient fences to the north, south and west. The post had corner braces to the south and west and wire from a former brace to the north. Another, evidently much newer post is situated 15 feet further north, with fencing to the east. Neither the post nor the fencing to the east appear to be particularly old or substantial. It is noted that the older post to the south is north of a straight line between the apparent section corners to the east and west, hence the newer fence to the north does not appear to be evidence of the corner. Excavation around the older post revealed a stone found flush with the ground, near the northeast corner of the post. The top of the stone was flat and horizontal, being 8 inches E-W by 10 inches N-S at the top. The stone was close to the post but not touching it and did not appear to be acting as a brace rock for the post. The stone was oriented in cardinal directions with the north, south and west edges vertical. The east edge sloped down to a total E-W dimension of 21 inches. The stone was removed and found to be 16 inches tall. The stone appeared to represent a monument purposely set to mark the corner and was accepted as the best available evidence of the corner. A Harrison monument was set in the position of the center of the top of the stone as originally found. The Harrison monument is situated at the northeast edge of the wood corner post, two inches above the adjacent ground.



Kenneth E. Hedge
Kenneth E. Hedge, County Surveyor

James S. Swift
James S. Swift, IN LS 20200054
June 3, 2020

Sugar Creek Township

