

SECTION CORNER RECORD

NE 400-100

BOONE COUNTY SURVEYOR'S OFFICE

State Plane grid coordinates NAD83 (2011):

North: 1766779.94 East: 3129833.33 (U.S. survey feet)

Type of monument: Harrison, 4" disk 'Section Corner'


Depth: Flush with surrounding ground

Indiana tie card references:

IN02_T19NR1E08_72 IN02_T19NR1E07_80

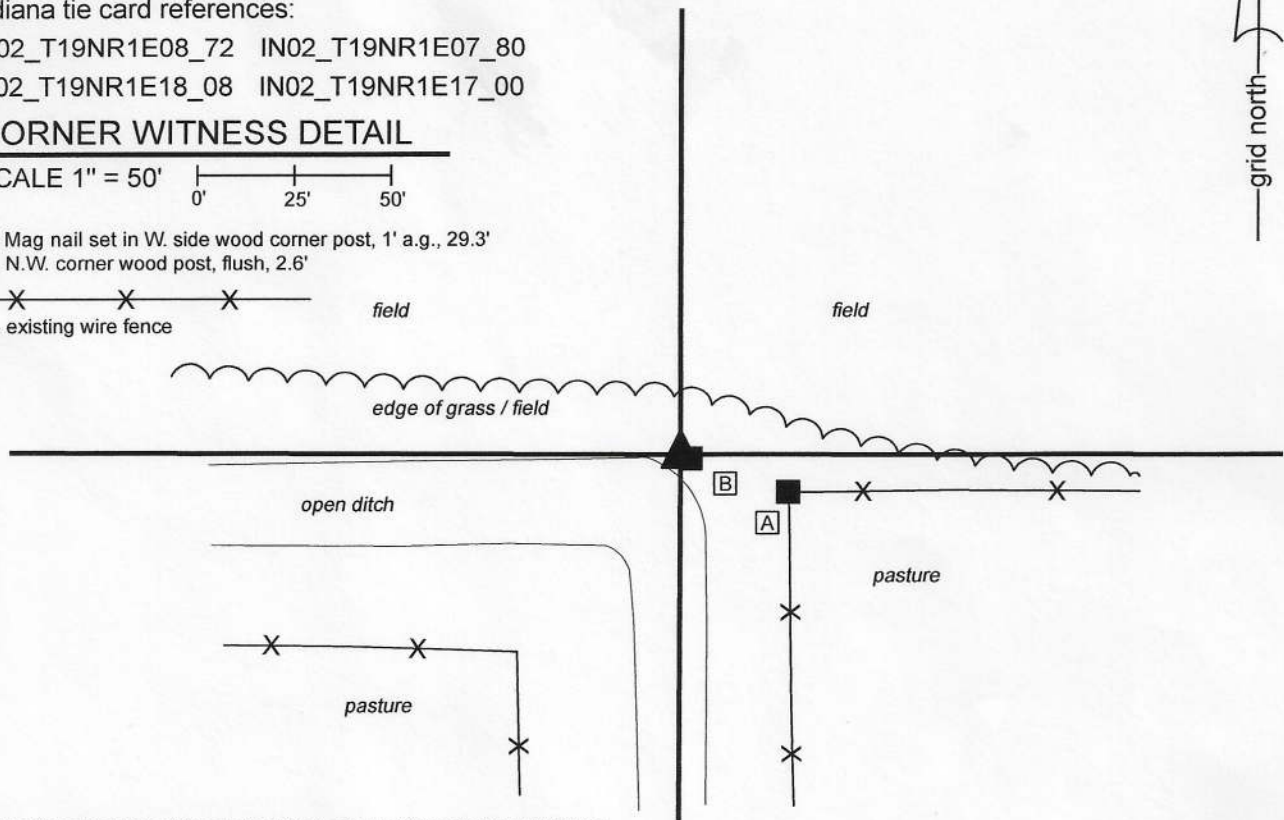
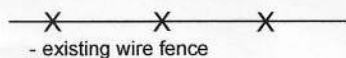
IN02_T19NR1E18_08 IN02_T19NR1E17_00

CORNER WITNESS DETAIL

SCALE 1" = 50' 

A - Mag nail set in W. side wood corner post, 1' a.g., 29.3'

B - N.W. corner wood post, flush, 2.6'



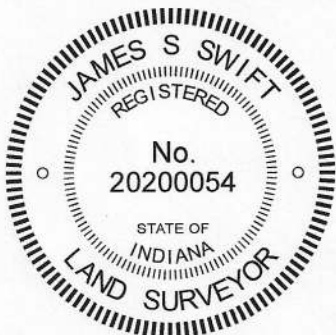
The Harrison monument was set in place of a Harrison monument found.

A BCS record dated March 9, 1886 states, with respect to this corner, "Reestablished by measurement (found point of stake) and set rock 20.14.12 + top-north 10 feet set wit 20.18.12."

A BCS tie card dated September 28, 2005 calls the corner a Harrison monument.

The Harrison monument was found in good condition, though not firmly attached to the ground, as shown on the 2005 tie card. The monument is 2.6 feet NW of the northwest edge of a wood corner post and 1 foot north of a rock found embedded in the soil. It is observed that this corner falls along the north edge of a deep open ditch. Clearly the immediate vicinity of the corner has been excavated and disturbed in the past. The wood post is not held as ancient evidence of the corner, as local landowner Tom Cunningham reports that the post was set in the 1960s following a tornado and has been doubted as representing the corner. The found stone is not of the same dimensions as called in the 1886 record and appears to have been haphazardly set. It does not appear to have been purposely set to mark the corner. No explanation is offered on the 2005 tie card for why the monument was set at its precise location, though it is noted that the position of the monument fits well with monumentation found marking property corners of properties along Elm Swamp Road, to the west, with respect to calls for the center of that road and the east line of the west half of the northeast quarter of section 18. The monument is situated slightly west of the southerly prolongation of fencing found providing evidence of the west line of the southwest quarter of section 8. Overall, up to 3 feet of uncertainty in all directions may be attributed to the position of the monument with respect to the found evidence. No evidence was found, however, which firmly disputes the position of the existing county monument so that position was held as the position of the corner. The existing Harrison was removed and replaced with a new Harrison, set firmly in concrete on May 13, 2020.


This corner was originally established as a wood post in 1822.




 Kenneth E. Hedge, County Surveyor

Clinton Township

Section 7 T19N, R1E	Section 8 T19N, R1E
Section 18 T19N, R1E	Section 17 T19N, R1E


 James S. Swift, IN LS 20200054

Center Township

June 30, 2020

SECTION CORNER RECORD

NE 400-150

BOONE COUNTY SURVEYOR'S OFFICE

State Plane grid coordinates NAD83 (2011):

North: 1766776.46 East: 3132480.75 (U.S. survey feet)

Type of monument: Harrison, 4" disk 'Section Corner'

Depth: Flush with ground, adjacent to south edge of post

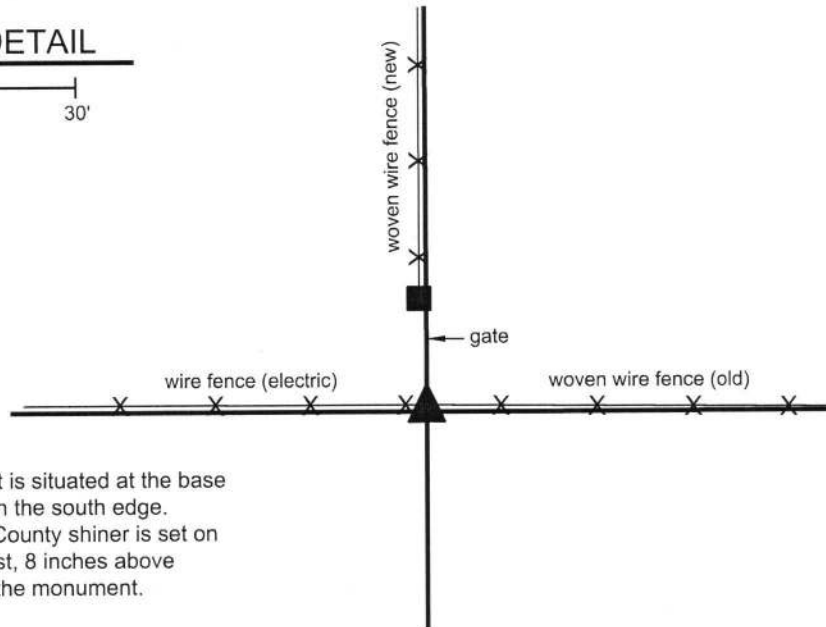
Indiana tie card references:

IN02_T19NR1E08_76 IN02_T19NR1E17_04

CORNER WITNESS DETAIL

SCALE 1" = 30'

0' 15' 30'



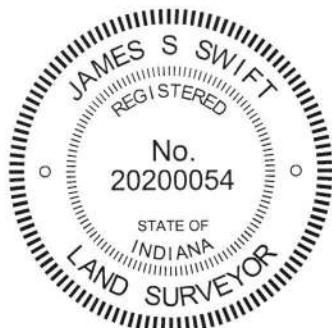
The Harrison monument is situated at the base of a wood corner post on the south edge. A mag nail with Boone County shiner is set on the south side of the post, 8 inches above grade, 0.4 foot north of the monument.

The Harrison monument was set in place of a stone found.

A BCS record of January 1, 1870 states, with respect to this corner, "Reestablished from Beech stake and a Beech stake, 16 in., N56E, 56 [links]." A BCS tie card dated September 29, 2005 shows the corner as a Harrison monument with no documentation of source. The tie card shows the corner 1.2 feet south of a wood corner post and shows the east-west section line as being south of the existing east-west fence. No information is provided as to why the corner was set south of the post.

This corner was excavated on October 17, 2017. Prior to excavation, an ancient wood post was found with ancient fencing to the east, modern electric fencing to the west and a gate to the north, north of which is newer fence, slightly west of the post. Per the 2005 tie card, a Harrison monument was found south of the post. As found, the monument appeared disturbed, with the top leaning toward the north. The monument evidently had been set directly in the dirt and did not appear to be stable as found. In the field, on first inspection, it was not clear why the monument was so far south of the post. Excavation around the post revealed a stone found at 8 inches deep at the south edge of the post, slightly northeast of the Harrison, partially between the monument and the post. The stone appeared to be vertical with a clear and distinct high point. The stone was measured to be 9 1/2 inches tall by 7 inches N-S by 5 inches E-W. The stone did not appear to be acting as a brace rock and also did not appear to have been haphazardly placed. The stone appeared in the field to have been purposely set as a corner marker. It was also evident in the field why the previous Harrison monument had been set so far south of the post, as it appeared that the monument was set in such a position to avoid the adjacent stone, which would have been in the way of a casual placement of a monument. The Harrison, being loosely set in the ground, was removed. The stone was accepted as the best evidence of the corner and was held as marking the corner. A new Harrison monument was set in place of the stone, fully embedded in concrete and in a stable condition. The new monument is 0.3 foot north and 0.4 foot east of the top of the previous monument as found. It is noted that the previous monument was leaning to the north as found.

This corner was originally established as a wood post in 1822.



Kenneth E. Hedge
Kenneth E. Hedge, County Surveyor

James S. Swift
James S. Swift, IN LS 20200054
October 24, 2017

Clinton Township

Section 8
T19N, R1E

Center Township

Section 17
T19N, R1E

SECTION CORNER RECORD

NE 400-200

BOONE COUNTY SURVEYOR'S OFFICE

State Plane grid coordinates NAD83 (2011):

North: 1766782.46 East: 3135113.83 (U.S. survey feet)

Type of monument: Harrison, 4" disk 'Section Corner'

Depth: Two inches above adjacent ground

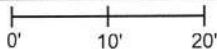
Indiana tie card references:

IN02_T19NR1E08_80 IN02_T19NR1E09_72

IN02_T19NR1E17_08 IN02_T19NR1E16_00

CORNER WITNESS DETAIL

SCALE 1" = 20'



orange plastic riser/breather for subterranean tile



An orange plastic perforated riser/breather for a subterranean tile is located 11.4 feet NNW of the monument. No other appropriate object are available to provide reliable distance ties.

The Harrison monument was set in place of a stone found.

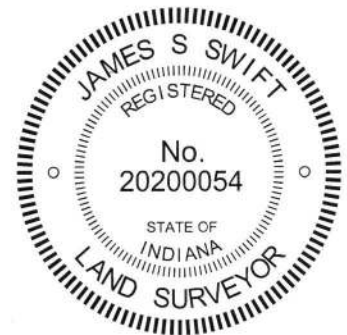
A BCS record dated April 22, 1880 states, with respect to this corner, "Reestablished. Tree has fallen but is here and retains mark. Set rock 15.9.9 + on top."

A BCS tie card dated August 16, 2005 shows the corner as a Harrison monument with no documentation of source. The tie card shows the Harrison as being set between a post and a N-S fence.

On July 18, 2014 excavators working for Ramsey Farm Drainage contacted the Boone County Surveyor's Office with information that they had just discovered a Harrison monument (bare with no concrete) amidst the material which had just been excavated and that they had hit a substantial sized rock. They recognized the monument as a survey marker and questioned whether the found rock was a corner stone marking a survey corner. I, James Swift, PS, went to the scene where I confirmed that the iron monument was indeed a Harrison monument and that the found stone which was exposed on the top and along its west side did appear to be a corner stone. The stone was not positively confirmed to match the dimensions of the 1880 stone. The position of the stone was determined with GPS equipment and the excavators continued their work which included removing the stone and installing a subterranean tile. The found stone was accepted as providing the best evidence of the corner.

On October 27, 2017 the stone was replaced with a new Harrison monument, set in durable fashion, in the same position. As noted, the 2005 Harrison had already been removed from the ground when the excavators noticed it, hence the position of the monument is reported per the coordinates on the tie sheet, with approximately 0.3 foot uncertainty in all directions. Per those coordinates, the new Harrison, set in place of the stone, is 0.5 foot south and 1.6 feet east of the position of the previous Harrison. Though the fencing has been removed in the immediate vicinity of the corner, the new monument is approximately 0.5 foot east of the longer N-S fence, as it yet exists north and south of the corner. The previous Harrison had been approximately 1 foot west of the fence.

This corner was originally established as a wood post in 1822.



Kenneth E. Hedge

 Kenneth E. Hedge, County Surveyor

James S. Swift

 James S. Swift, IN LS 20200054
 November 15, 2017

Clinton Township	Section 8 T19N, R1E	Section 9 T19N, R1E
	Section 17 T19N, R1E	Section 16 T19N, R1E
Center Township	▲	

SECTION CORNER RECORD

NE 450-100

BOONE COUNTY SURVEYOR'S OFFICE

State Plane grid coordinates NAD83 (CORS96):

North: 1769421.18 East: 3129833.31 (U.S. survey feet)

Type of monument: Harrison, 4" disk 'Section Corner'

Depth: six inches below adjacent gravel road surface

Indiana tie card references:

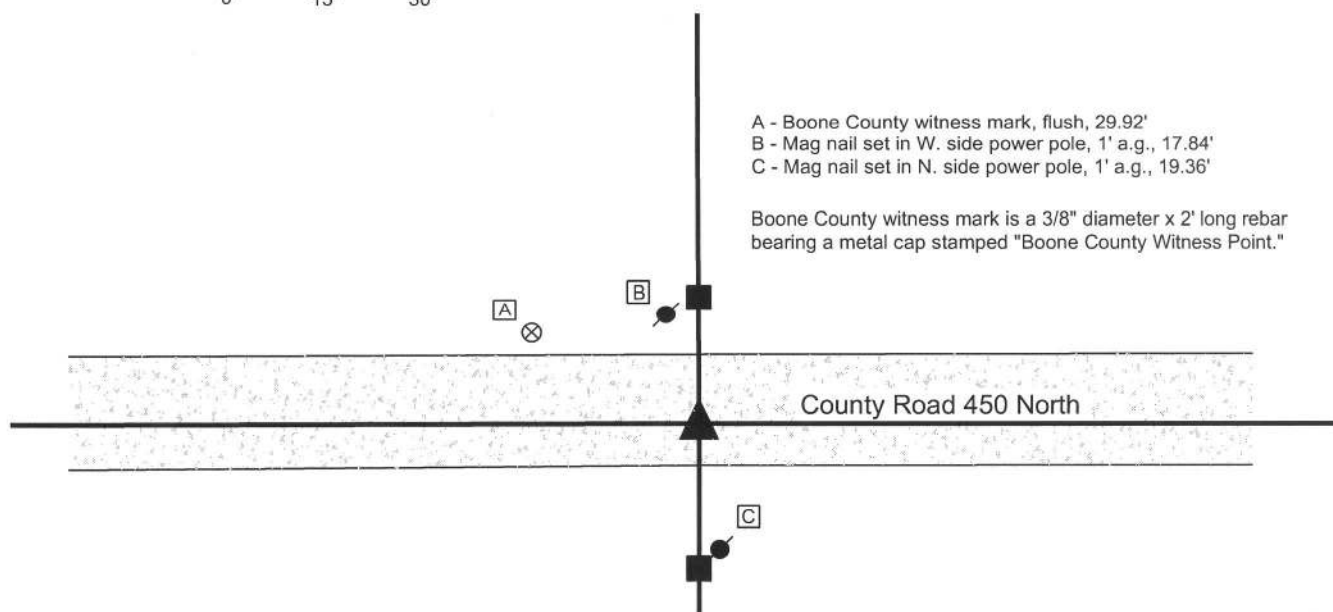
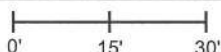
IN02_T19NR1E07_44

IN02_T19NR1E08_36



CORNER WITNESS DETAIL

SCALE 1" = 30'



The Harrison monument was set in place of a vertical section of railroad rail found.

A BCS record of February 28, 1872 states "Reestablished from stump of Ash drove stake and put a Rock 12.7.6 +..." A BCS tie card dated July, 1968 states "No stone." A BCS tie card dated August 28, 2005 shows the corner as a railroad rail with no documentation of source.

This corner was excavated on June 18, 2012. Prior to excavation a railroad rail was found at 1 inch deep, slightly south of center of the county road. Excavation of an area extending 2 feet south, 6 feet north, 5 feet east and 5 feet west of the rail revealed no further evidence of the corner. It is noted that the road bed in this area is of minimal thickness, being only approximately 6 inches. The stone described in the 1872 record was not large. Given the minimal depth of the road and the small size of the stone, it is reasonable to conclude that the stone may have been removed by road grading equipment. The rail fit generally with local evidence, being in the east-west road and in line with the posts to the north and south. The rail was 19.5 feet south of old post on the north side of the road, approximately 2 feet south of the center of the gravel road. Excavation was performed in area far enough north to center the area of excavation on a position approximately 1 rod (16.5 feet) south of the old post. As no other evidence was found, the rail was held as marking the corner. The rail was removed during excavation and replaced with a Harrison monument in the same position.

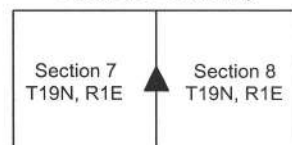
This corner was originally established as a wood post in June, 1822.



Kenneth E. Hedge, County Surveyor

James S. Swift, IN LS 20200054
February 6, 2013

Clinton Township



SECTION CORNER RECORD

NE 450-200

BOONE COUNTY SURVEYOR'S OFFICE

State Plane grid coordinates NAD83 (CORS96):

North: 1769419.19 East: 3135116.83 (U.S. survey feet)

Type of monument: Harrison, 4" disk 'Section Corner'

Depth: six inches below adjacent gravel road surface

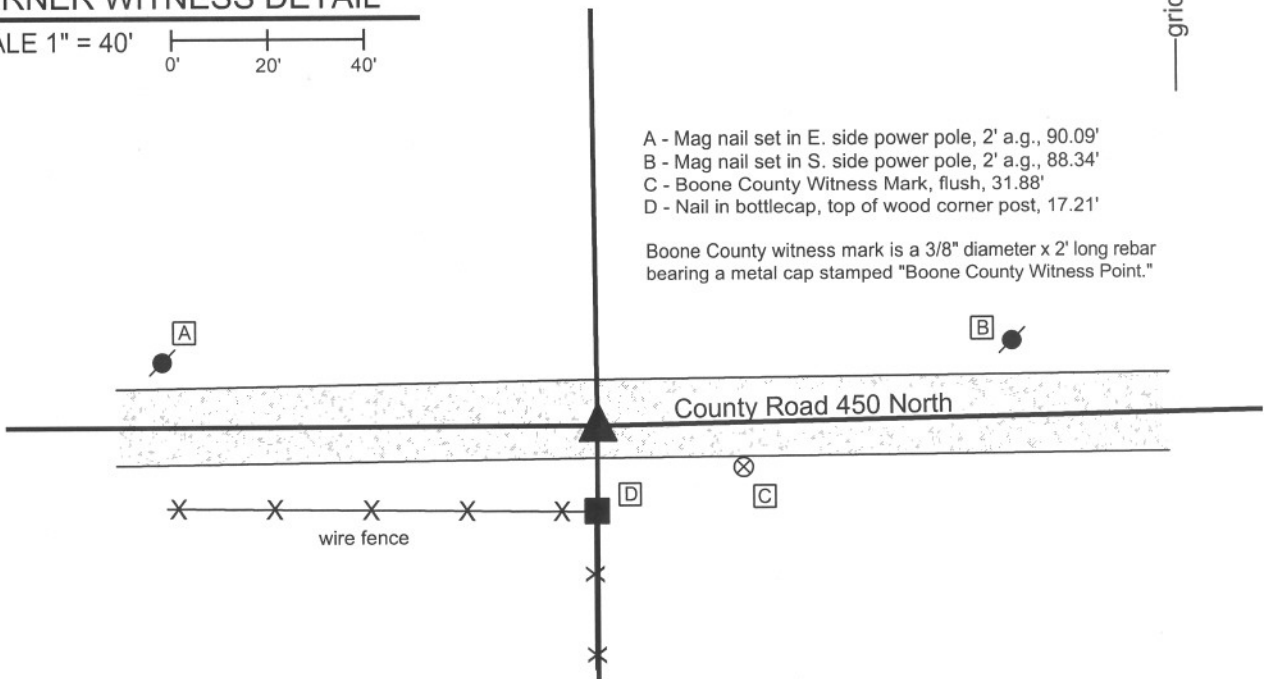
Indiana tie card references:

IN02_T19NR1E08_44

IN02_T19NR1E09_36

CORNER WITNESS DETAIL

SCALE 1" = 40'



- A - Mag nail set in E. side power pole, 2' a.g., 90.09'
- B - Mag nail set in S. side power pole, 2' a.g., 88.34'
- C - Boone County Witness Mark, flush, 31.88'
- D - Nail in bottlecap, top of wood corner post, 17.21'

Boone County witness mark is a 3/8" diameter x 2' long rebar bearing a metal cap stamped "Boone County Witness Point."

The harrison monument was set over a stone found.

A BCS record of April 22, 1880 states "A Rock 20.8.3 which was set stump of NW tree agrees. Marked the rock +." A BCS tie card dated July 1968 states "no stone." A BCS tie card dated June 11, 1975 states "found RR rail - no stone." A BCS tie card dated September 1, 2005 shows the corner as a rail found.

This corner was excavated on June 18, 2012. Prior to excavation a vertical section of railroad rail was found at 10 inches below grade. A 5/8 inch diameter rebar was also found at 2 inches below grade, 1.5 feet south and 0.75 foot east of the rail. Excavation revealed a stone found at 10 inches deep. The top of the stone is 8 inches E-W by 3 inches N-S. The top 12 inches of the stone were exposed. The top 10 inches of the stone appear to hold be the same E-W/N-S dimensions as the top, below which the stone become larger. The stone was vertical and fully embedded in the clay layer below the road, with the top of the stone at the bottom of the road bed. The top of the stone is generally flat with the top, center point of the stone being slightly higher than the rest of the top. No specific marks were found on the stone. The stone was accepted as being the same monument described in the 1880 record and was held as marking the corner. The stone was left in place with the top 12 inches encased in concrete. A harrison monument was broken off at 4 inches tall and set directly over the top center / high point of the stone.

The rebar had been 0.7 foot north of the stone. The rail had been 2.2 feet north and 0.75 foot west of the stone.

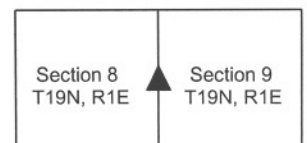
This corner was originally established as a wood post in June, 1822.



Kenneth E. Hedge
Kenneth E. Hedge, County Surveyor

James S. Swift
James S. Swift, IN LS 20200054
January 15, 2013

Clinton Township



PHOTOGRAPHIC DOCUMENTATION

Date of photography: June 18, 2012

View of the stone from above and south.



View of the stone from above and west.



View from the north, looking across the stone and down the fence line to the south.



View from the east, looking across the stone and west along County Road 400 North.



For details and documentation, refer to related sheet "Section Corner Record."

SECTION CORNER RECORD

NE 500-100

BOONE COUNTY SURVEYOR'S OFFICE

State Plane grid coordinates NAD83 (CORS96):

North: 1772060.68 East: 3129821.84 (U.S. survey feet)

Type of monument: Harrison, 4" disk 'Section Corner'

Depth: six inches below adjacent gravel road surface

Indiana tie card references:

IN02_T19NR1E06_80 IN02_T19NR1E05_72

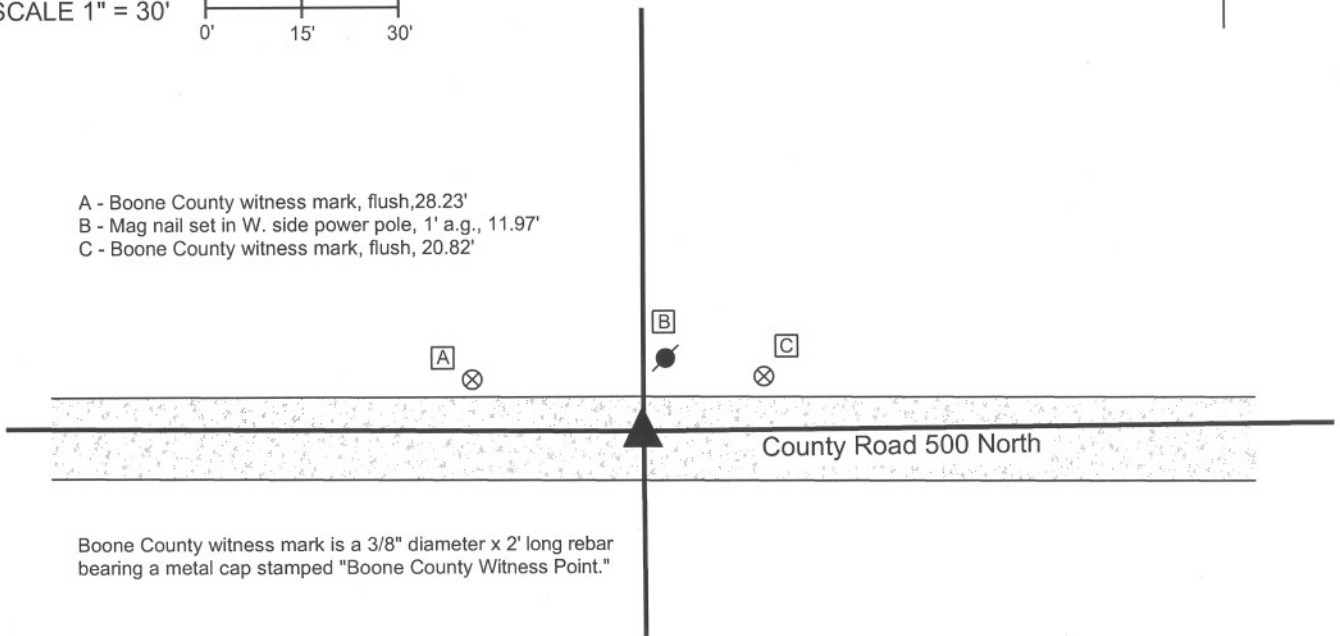
IN02_T19NR1E07_08 IN02_T19NR1E08_00



CORNER WITNESS DETAIL

SCALE 1" = 30'

- A - Boone County witness mark, flush, 28.23'
- B - Mag nail set in W. side power pole, 1' a.g., 11.97'
- C - Boone County witness mark, flush, 20.82'



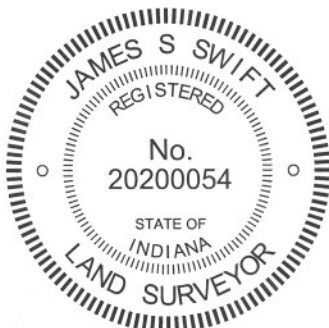
Boone County witness mark is a 3/8" diameter x 2' long rebar bearing a metal cap stamped "Boone County Witness Point."

The Harrison monument was set in place of a Harrison monument found.

No specific descriptions of this corner were found in the BCS Surveyor's Record. A BCS tie card dated September 29, 2005 shows the corner as a Harrison monument with no documentation of source.

This corner was excavated on June 19, 2012. Prior to excavation a Harrison monument was found which fit with the 2005 distance ties. Excavation of an area extending 4 feet north, 5 feet east, 4 feet south and 4 feet west of the Harrison monument revealed no further evidence of the corner. The road bed is only 6 inches in this area. The Harrison monument fit with local evidence in the form of the center of the county road to the east and west and the broken-off wood post on the north side of the road. The position of the found Harrison was held as the corner. The found Harrison monument was removed during excavation and replaced with a new Harrison in the same position.

This corner was originally established as a wood post in June, 1822.



Kenneth E. Hedge
Kenneth E. Hedge, County Surveyor

James S. Swift
James S. Swift, IN LS 20200054
January 15, 2013

Clinton Township

Section 6 T19N, R1E	Section 5 T19N, R1E
Section 7 T19N, R1E	Section 8 T19N, R1E

SECTION CORNER RECORD

NE 500-150

BOONE COUNTY SURVEYOR'S OFFICE

State Plane grid coordinates NAD83 (2011):

North: 1772066.81 East: 3132458.10 (U.S. survey feet)

Type of monument: Harrison, 4" disk 'Section Corner'

Depth: Two inches above adjacent ground

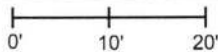
Indiana tie card references:

IN02_T19NR1E05_76 IN02_T19NR1E08_04

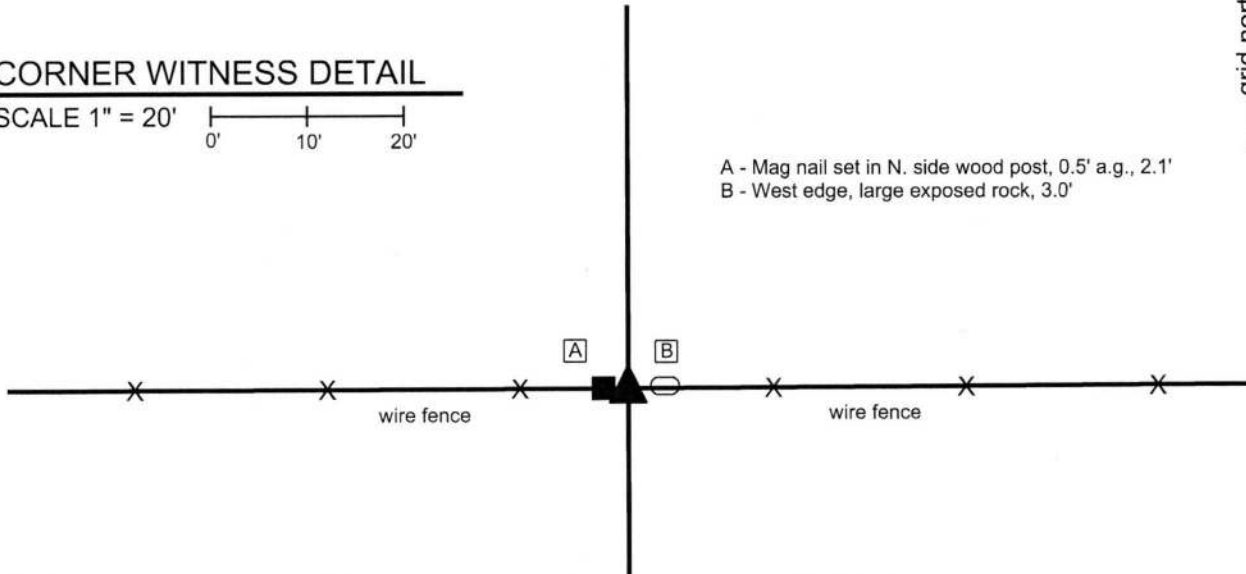


CORNER WITNESS DETAIL

SCALE 1" = 20'



A - Mag nail set in N. side wood post, 0.5' a.g., 2.1'
B - West edge, large exposed rock, 3.0'



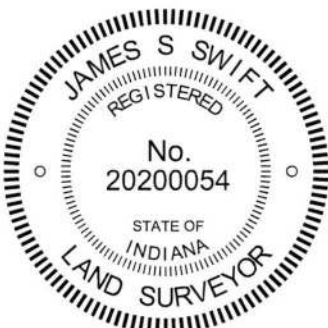
The Harrison monument was set in an E-W fence line in the same E-W position as a previously set Harrison monument.

No references to this corner were found in the Boone County Surveyor's Record beyond the original establishment of the corner as a wood post in 1821. A BCS tie card dated September 28, 2005 shows the corner as a Harrison monument 4.42 feet south of an existing fence. The document shows no documentation of source nor does it attempt to explain why the monument was set south of the fence.

This corner was excavated on October 26, 2017. Prior to excavation, the Harrison monument was found as shown on the tie card. It is noted that a specific corner post was not found and that the fence posts in this vicinity were all of the line-post variety. Excavation revealed several stones found along the existing fence, ranging from 3.5 feet east to 4 feet west of the existing monument. None of the stones could be positively identified as marking the corner, though the concentration of stones in the immediate vicinity of the corner indicates that an older corner post may have existed in this position previously. It is noted that further excavation and probing to the east and west did not reveal more stones. Hence it appears that the stones along the fence were concentrated in the immediate vicinity of the corner.

Though the 2005 tie card does not attempt to explain why the corner was established well south of the fence, the evidence of proximate corners indicates that perhaps the corner was established at the easterly prolongation of a line connecting the corner 1/2 mile west (see corner NE 500-100) with a wood corner post providing evidence of the corner 1/4 mile west. If this is this case, it is not known why the remote evidence of the post one 1/4 mile west was held as superior to the local evidence of the fence at the corner. It also noted that, if this approach were held to control the position of the corner, remote evidence of the corners 1/2 and 1/4 mile, respectively, to the east would indicate that the corner could be further north than the existing fence, rather than further south.

Given the lack of information for why the previous Harrison was established south of the fence, the local evidence of the fence was held as superior to the monument set in 2005. That monument was removed and a new Harrison monument was set in line with the existing E-W fence, 4.8 feet north of the previous monument. The E-W position of the previous monument was held, as it works reasonably well with the respective positions of the corners 1/2 and 1/4 mile east and west and is also approximately centered among the rocks found in the E-W fence.



Kenneth E. Hedge, County Surveyor

James S. Swift, IN LS 20200054
January 10, 2018

Clinton Township

Section 5
T19N, R1E

Section 8
T19N, R1E

SECTION CORNER RECORD

NE 500-200

BOONE COUNTY SURVEYOR'S OFFICE

State Plane grid coordinates NAD83 (2011):

North: 1772067.21 East: 3135099.37 (U.S. survey feet)

Type of monument: Harrison, 4" disk 'Section Corner'

Depth: Two inches above adjacent ground.

Indiana tie card references:

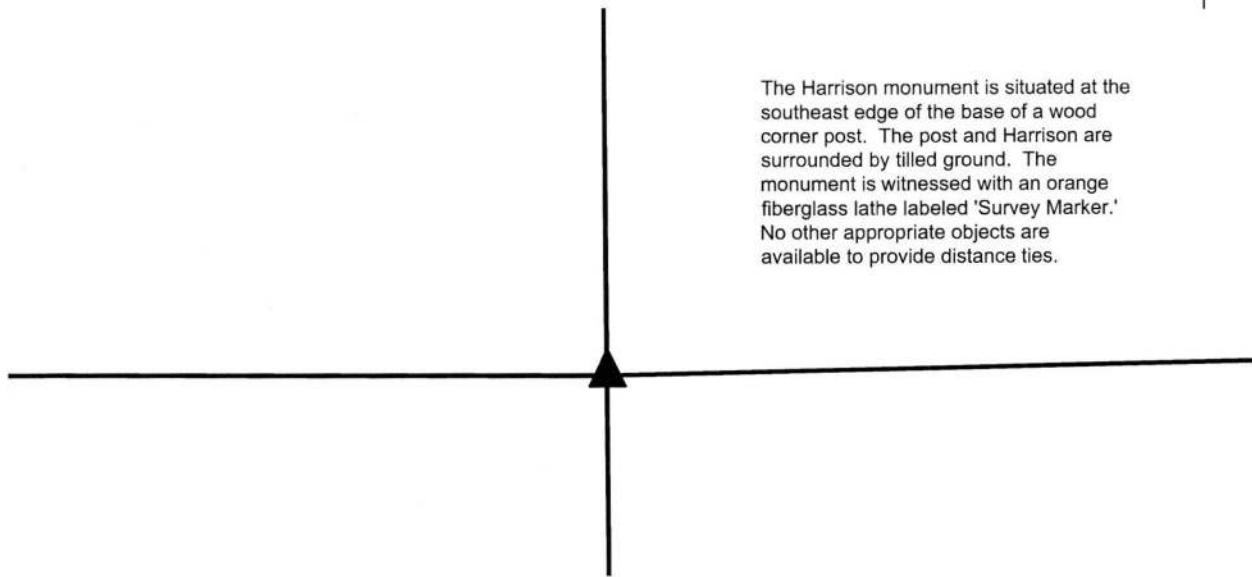
IN02_T19NR1E05_80 IN02_T19NR1E04_72

IN02_T19NR1E08_08 IN02_T19NR1E09_00



CORNER WITNESS DETAIL

No scale



The Harrison monument is situated at the southeast edge of the base of a wood corner post. The post and Harrison are surrounded by tilled ground. The monument is witnessed with an orange fiberglass lathe labeled 'Survey Marker.' No other appropriate objects are available to provide distance ties.

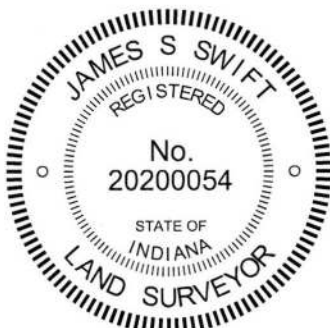
The Harrison monument was set in place of a stone found.

A BCS record of October 15, 1912 references a previous record of March 3, 1887 and states, with respect to this corner, "Re-est. from Oak witness, all gone except roots. Set Rock 10x16x12 +." No recent BCS tie cards were found referencing this corner.

Excavation was performed at this corner on November 28, 2017. Prior to excavation, a wood post was found with fencing cut off to the north, south and west, indicating the the post was formerly at the intersection of fences in those three directions. No standing fence is attached to the post and the post is isolated from other evidence, standing alone in the middle of a tilled field. The post is stable in the ground but leans substantially toward the northeast. The position of the post fits well with other corners, including another isolated post in the field 1/4 mile to the north. Excavation around the base of the post revealed a rock found at the southeast corner of the post. The stone was found to measure 10 inches by 16 inches by 7 inches. It is noted that a sheer edge exists on the rock, indicating the rock was previously of a larger size and split at some point. The dimensions of the rock are such that the sheer edge represents one edge which determines the 7 inch measurement. Hence, it is possible that the rock did previously match the 1887/1912 record dimensions, though that is not possible to confirm this without the remaining portion of the stone, which was not found.

The stone was held as marking the corner. The stone was removed and a Harrison monument was set in its place.

This corner was originally established as a wood post in 1821.



Kenneth E. Hedge, County Surveyor

James S. Swift, IN LS 20200054
January 10, 2018

Clinton Township

Section 5 T19N, R1E	Section 4 T19N, R1E
Section 8 T19N, R1E	Section 9 T19N, R1E