

# SECTION CORNER RECORD

# NW 300-950

## BOONE COUNTY SURVEYOR'S OFFICE

State Plane grid coordinates NAD83 (2011):  
North: 1761397.99 East: 3074566.54 (U.S. survey feet)

Type of monument: Harrison, 4" disk 'Section Corner'  
Depth: Two inches above surrounding ground

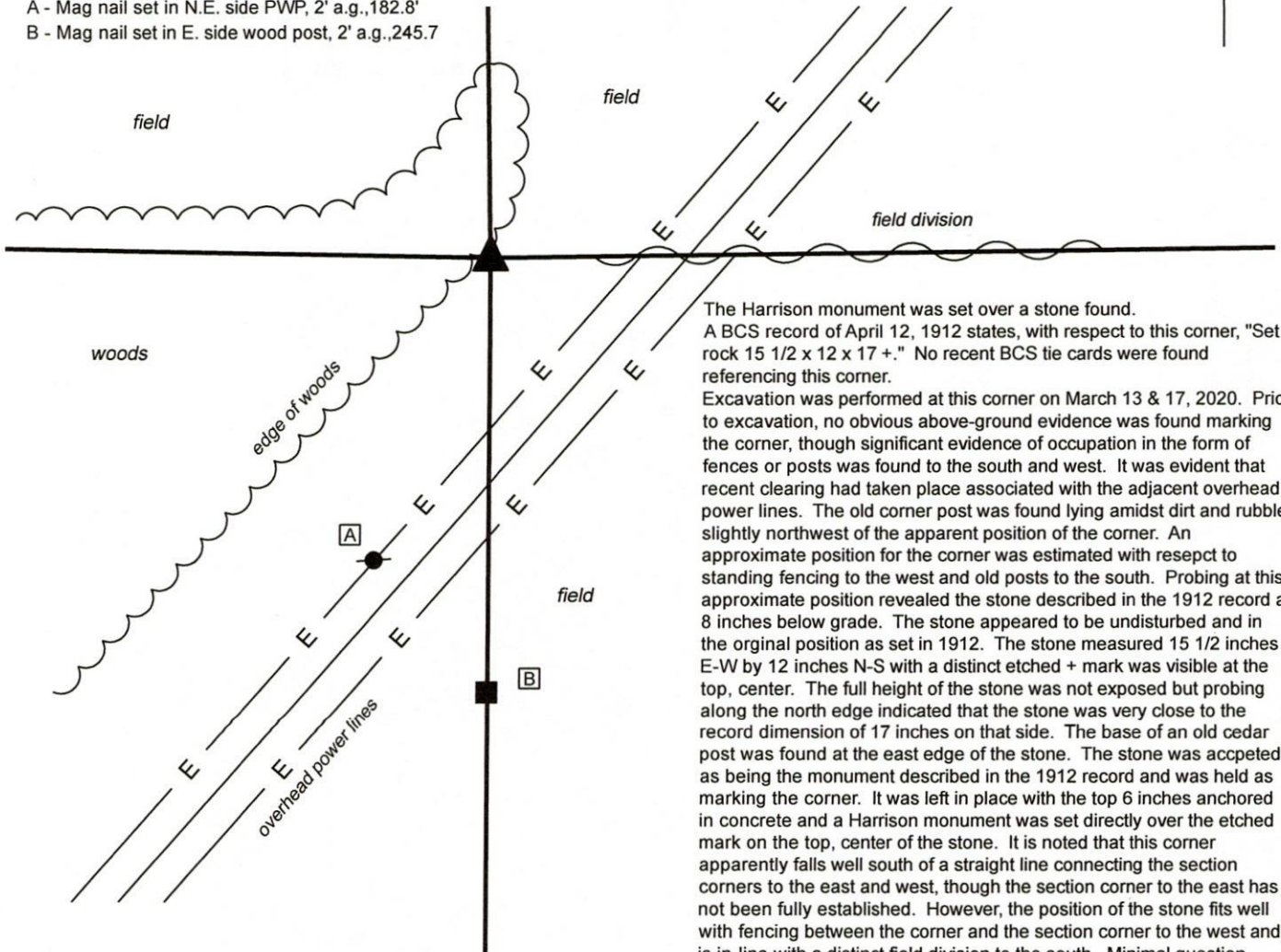
Indiana tie card references:  
IN02\_T19NR2W16\_76 IN02\_T19NR2W21\_04

### CORNER WITNESS DETAIL

SCALE 1" = 100'  
0' 50' 100'



- A - Mag nail set in N.E. side PWP, 2' a.g., 182.8'
- B - Mag nail set in E. side wood post, 2' a.g., 245.7



The Harrison monument was set over a stone found. A BCS record of April 12, 1912 states, with respect to this corner, "Set rock 15 1/2 x 12 x 17 +." No recent BCS tie cards were found referencing this corner.

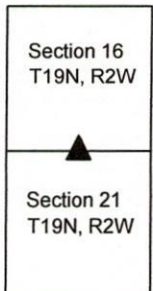
Excavation was performed at this corner on March 13 & 17, 2020. Prior to excavation, no obvious above-ground evidence was found marking the corner, though significant evidence of occupation in the form of fences or posts was found to the south and west. It was evident that recent clearing had taken place associated with the adjacent overhead power lines. The old corner post was found lying amidst dirt and rubble slightly northwest of the apparent position of the corner. An approximate position for the corner was estimated with respect to standing fencing to the west and old posts to the south. Probing at this approximate position revealed the stone described in the 1912 record at 8 inches below grade. The stone appeared to be undisturbed and in the original position as set in 1912. The stone measured 15 1/2 inches E-W by 12 inches N-S with a distinct etched + mark was visible at the top, center. The full height of the stone was not exposed but probing along the north edge indicated that the stone was very close to the record dimension of 17 inches on that side. The base of an old cedar post was found at the east edge of the stone. The stone was accepted as being the monument described in the 1912 record and was held as marking the corner. It was left in place with the top 6 inches anchored in concrete and a Harrison monument was set directly over the etched mark on the top, center of the stone. It is noted that this corner apparently falls well south of a straight line connecting the section corners to the east and west, though the section corner to the east has not been fully established. However, the position of the stone fits well with fencing between the corner and the section corner to the west and is in-line with a distinct field division to the south. Minimal question exists as to whether this is the position established in 1912. This corner was originally established as a wood post in 1829.



*Kenneth E. Hedge*  
Kenneth E. Hedge, County Surveyor

*James S. Swift*  
James S. Swift, IN LS 20200054  
March 23, 2020

Jefferson Township



# SECTION CORNER RECORD

# NW 450-1200

## BOONE COUNTY SURVEYOR'S OFFICE

State Plane grid coordinates NAD83 (2011):

North: 1769428.32 East: 3061174.34 (U.S. survey feet)

Type of monument: Harrison, 4" disk 'Section Corner'

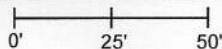
Depth: Six inches below adjacent road surface

Indiana tie card references:

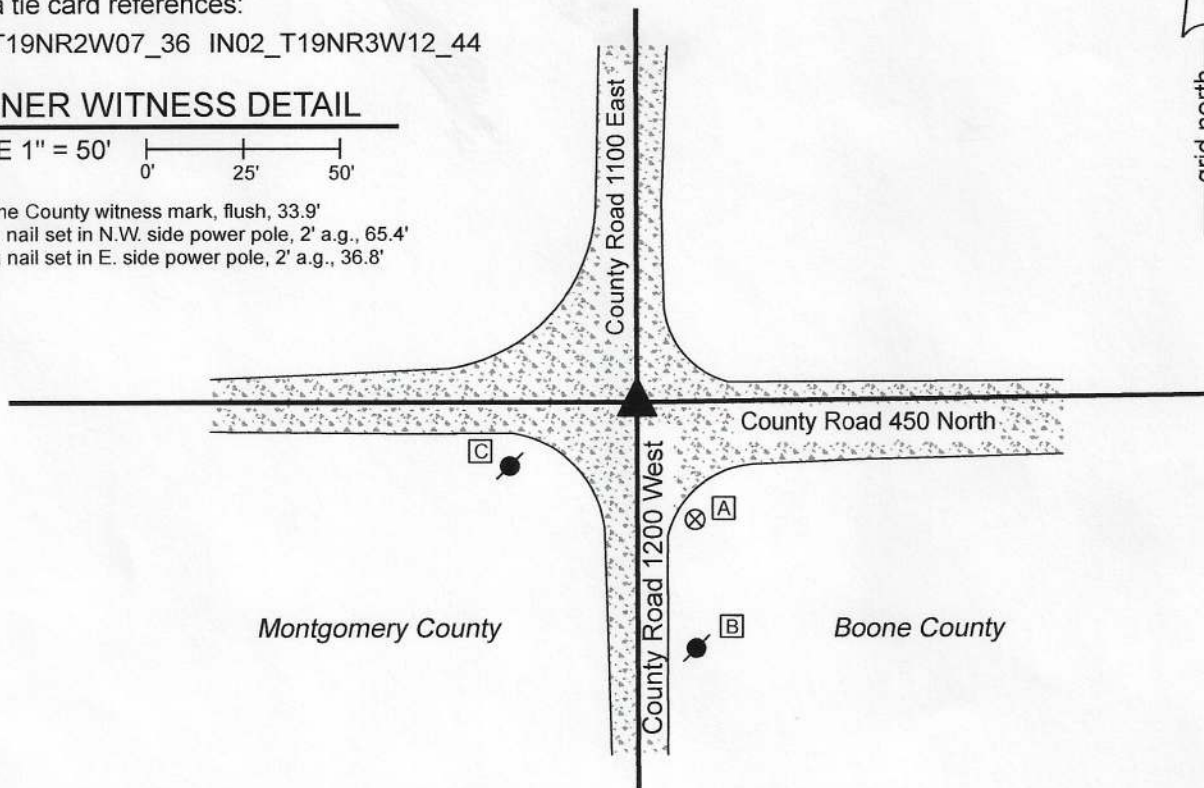
IN02\_T19NR2W07\_36 IN02\_T19NR3W12\_44

### CORNER WITNESS DETAIL

SCALE 1" = 50'



- A - Boone County witness mark, flush, 33.9'
- B - Mag nail set in N.W. side power pole, 2' a.g., 65.4'
- C - Mag nail set in E. side power pole, 2' a.g., 36.8'



The Harrison monument was set above a stone and in place of a rebar with Montgomery County Surveyor cap. A BCS record of September 11, 1912 and referencing a previous record of October 7, 1890, states, with respect to this corner, "Reestablished at intersection of line from E. with line from A to G. Rock + 14-10-10 at corner. No recent BCS tie cards were found referencing the corner. A Section Corner Dossier provided by the Office of the Montgomery County Surveyor dated March 16, 2015 states that the rebar was set in place of a stone found 0.3 foot below grade. No dimensions are given for the found stone. The dossier references previous surveys which have held a stone as marking the corner. This corner was excavated on March 3, 2020. Prior to excavation, the rebar bearing the Montgomery County cap was found as shown on the dossier. Excavation revealed a stone found below the rebar at 15 inches below grade. With the top 8 inches of the stone exposed, it measured 7 inches E-W by 8 inches N-S and was clearly larger in all dimensions. No specific marks were observed on the stone though it had a distinct high point. It was embedded in the clay layer below the road, protruding 2 inches into the bottom of the road bed. The rebar had been over the stone but approximately 0.3 foot SE of the high point. The Montgomery County dossier indicates that the rebar was set in place of a stone found but does not mention the lower stone. It is not known whether the lower stone was observed during the 2015 excavation. It is noted that the east-west roads jog slightly at the county line, where no jog would be expected. This is discussed in the Montgomery County dossier. This may be simply due to the fact that the Boone County Road is wider and has been maintained more rigorously. The conclusions held the Montgomery County Dossier are accepted for purposes of the perpetuating the corner. The position of the corner held by Montgomery County and the previous surveys which have held a stone was accepted as the specific position of the corner, though it is noted that the high point of the lower stone, embedded in the clay layer below the road bed is 0.3 foot NW of this position. The rebar was removed during excavation and replaced with a Harrison monument in the same position. The stone found at 15 inches deep was left in place with the top of the stone partially encased in concrete. It is noted that, though on a range line, this is a common corner for the two counties. This is due to the presence of the west line of the Thorntown Indian Reserve slightly east of the corner and the fact that the original subdivision survey of T19N, R2W in 1822 held the standard corner and measured east therefrom.



*Kenneth E. Hedge*  
 Kenneth E. Hedge, County Surveyor

*James S. Swift*  
 James S. Swift, IN LS 20200054  
 August 26, 2020

Sugar Creek Township

Section 12 T19N, R3W	Section 7 T19N, R2W
-------------------------	------------------------

# SECTION CORNER RECORD

NW 500-1200

## BOONE COUNTY SURVEYOR'S OFFICE

State Plane grid coordinates NAD83 (2011):

North: 1772076.16 East: 3061159.70 (U.S. survey feet)

Type of monument: Harrison, 4" disk 'Section Corner'

Depth: Six inches below adjacent road surface

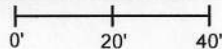
Indiana tie card references:

IN02\_T19NR3W01\_80 IN02\_T19NR2W06\_72

IN02\_T19NR3W12\_08 IN02\_T19NR2W07\_00

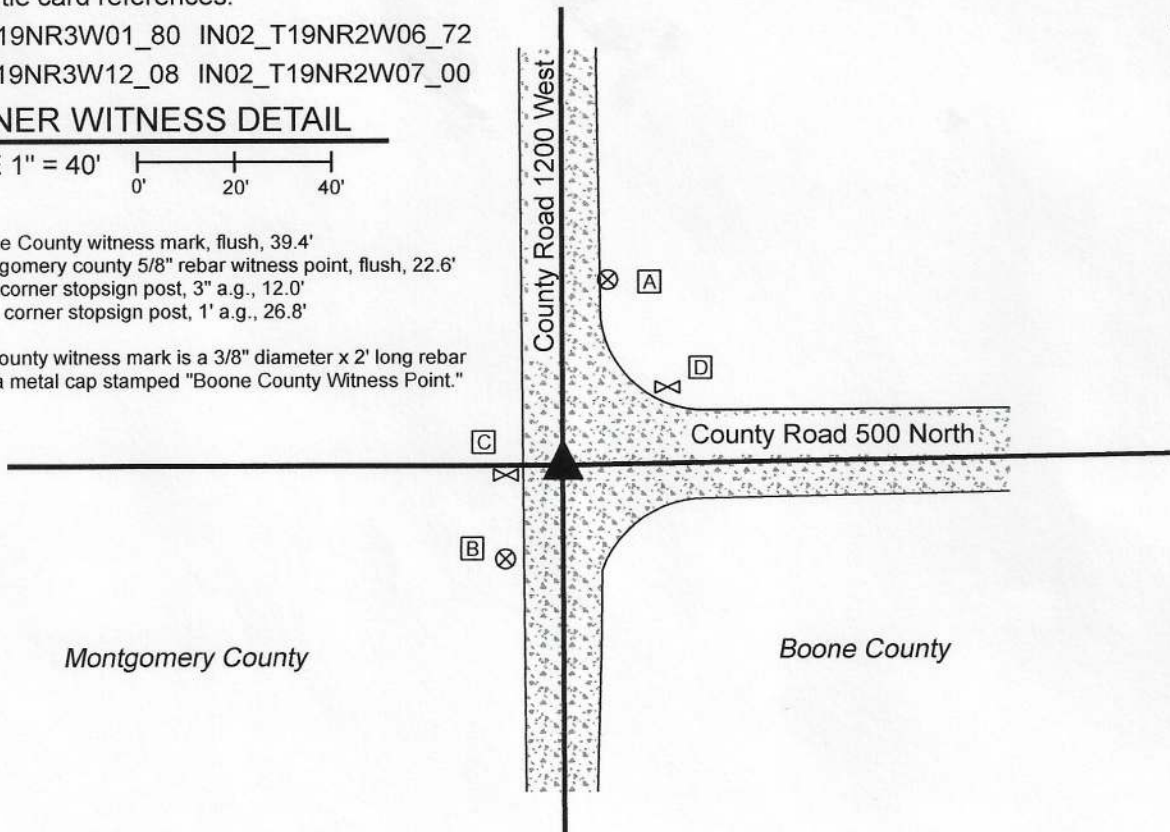
### CORNER WITNESS DETAIL

SCALE 1" = 40'



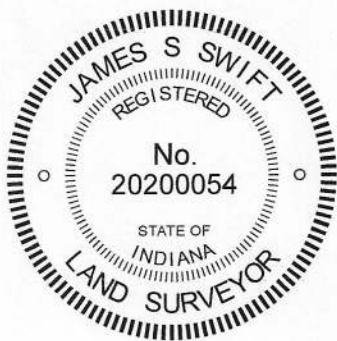
- A - Boone County witness mark, flush, 39.4'
- B - Montgomery county 5/8" rebar witness point, flush, 22.6'
- C - N.E. corner stopsign post, 3" a.g., 12.0'
- D - N.W. corner stopsign post, 1' a.g., 26.8'

Boone County witness mark is a 3/8" diameter x 2' long rebar bearing a metal cap stamped "Boone County Witness Point."



The Harrison monument was set in place of a rebar found.

No specific description of this corner was found in the BCS Surveyor's Record beyond the original establishment of the corner for the sections in Range 3 West as a wood post in 1819 and the holding of that corner for the establishment of the corner for the sections in Range 2 West in 1822. No recent BCS tie cards were found referencing the corner. A section corner dossier provided by the Montgomery County Surveyor's Office, dated April 23, 2015, shows the corner as a stone found 0.9 foot below grade and replaced with a 5/8 inch by 24 inch rebar with aluminum cap. The rebar referenced in the Montgomery County dossier was found in good condition, evidently undisturbed, at 4 inches below grade. The dossier states that several private surveys had held the stone or an iron pin above it as the corner previously. No dimension are reported for the found stone. The corner as established by Montgomery County fits well with local evidence in the form of the intersection of the county roads and fits well with the relative positions of proximate corners. The Montgomery County corner was held and the rebar was replaced with a Harrison monument on March 3, 2020. As noted above, the corners for the sections in Ranges 2 and 3 West represent a common corner with no offset. This is due to the presence of the west line of the Thorntown Reserve to the east and the practice of holding the standard corner and measuring east from it by the federal subdividing surveyors in 1822.



*Kenneth E. Hedge*  
 Kenneth E. Hedge, County Surveyor

*James S. Swift*  
 James S. Swift, IN LS 20200054  
 April 1, 2020

Franklin Township  
 Montgomery County

Sugar Creek Township  
 Boone County

Section 1 T19N, R3W	Section 6 T19N, R2W
Section 12 T19N, R3W	Section 7 T19N, R2W