

SECTION CORNER RECORD

NE 400-000

BOONE COUNTY SURVEYOR'S OFFICE

State Plane grid coordinates NAD83 (2011):

Corner 1: North: 1766724.12 East: 3124826.08 (U.S. survey feet)

Corner 2: North: 1766794.02 East: 3124826.04 (U.S. survey feet)

Both Corners: Harrison, 4" disk 'Section Corner', flush

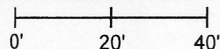
Indiana tie card references:

IN02_T19NR1E07_72 IN02_T19NR1W12_80

IN02_T19NR1W13_08 IN02_T19NR1E18_00

CORNER WITNESS DETAIL

SCALE 1" = 40'

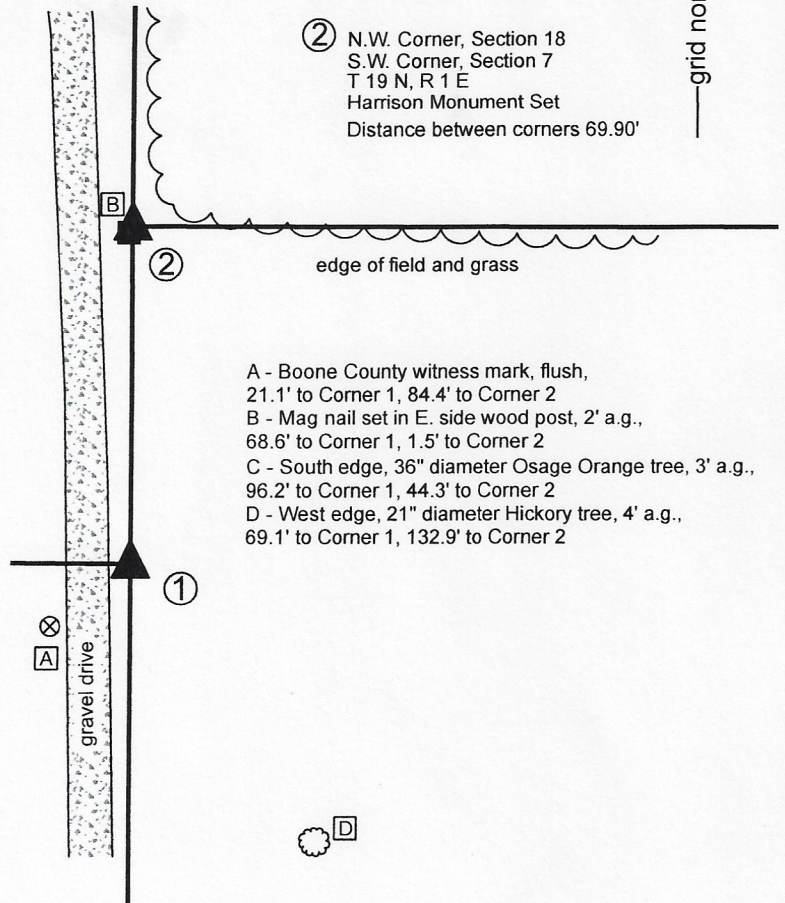


The Harrison monument at Corner 2 was set in place of a disturbed monument found. The Harrison monument at Corner 1 was set in the position of a previous monument, per information shown on a BCS tie sheet dated September 30, 2005. Both of these corners are original federal corners. Corner 1 was set in 1819 and Corner 2 was set in 1822. No specific descriptions of the corners were found in the BCS Surveyor's Record beyond the original establishments of the corners as wood posts in 1819 and 1822, respectively. Both corners are shown on a BCS tie card dated September 30, 2005 which shows them as Harrison monuments with no documentation of source.

Corner 2 is situated slightly east of a wood post, generally in-line with evidence of the north line of the northwest quarter of the northwest quarter of Section 18, in the form of a wood corner post, rebar at the base of a wood corner post, and east-west field division. The Harrison monument found at Corner 2 was disturbed, leaning substantially to the southwest, as found. No monument was found at Corner 1. Ron Neese, owner of the surrounding land confirms that the monument was removed several years ago during installation of a drainage tile. The record federal closing distance for these corners is 93 links, or 61.4 feet. The corners as established per the 2005 tie card are separated by 69.90 feet. Existing fences and rebars found providing evidence of the north line of the northeast quarter of section 13 fall generally along the line, or slightly south thereof, connecting Corner 1 as established per the 2005 tie card and the north quarter corner of Section 13 (see BCS Corner NW 400-050). The furthest east of this evidence was found at approximately 600 feet west of Corner 1. It was observed that the 2005 position for Corner 1 represents the northerly most position expected with respect to the physical evidence to the west and that some evidence indicates that the corner could be several feet further south. Hence it is observed that although the two corners are substantially further apart than the record federal closing distance, both corners work with respective evidence to the west (Corner 1) and east (Corner 2) and that no physical evidence was found to indicate that the corners should be separated by less distance than is shown on the 2005 tie card. Manual excavation around the monument and post at Corner 2 revealed various rubble and small rocks but no stones or other monuments which appeared to represent evidence of the corner. Exploratory excavation was not performed at Corner 1, given the known fact that the vicinity of this corner was substantially disturbed during the recent tile installation.

Corner 2 was established per reference ties shown on the 2005 tie card, which fit with the found, though disturbed, monument. Corner 1 was established at the southerly prolongation of a line prolonged from the east quarter corner of Section 12 (see BCS Corner NW 450-000) through Corner 2 at 69.90 feet, per the 2005 tie card. Harrison monuments were set in concrete at both corners on October 8, 2020.

- ① S.E. Corner, Section 12
N.E. Corner, Section 13
T 19 N, R 1 W
Harrison Monument Set
- ② N.W. Corner, Section 18
S.W. Corner, Section 7
T 19 N, R 1 E
Harrison Monument Set
Distance between corners 69.90'

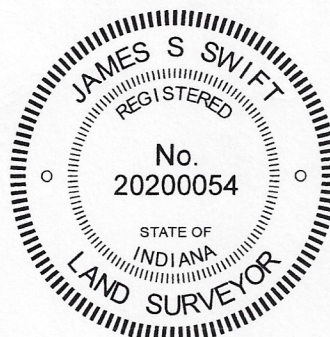


- A - Boone County witness mark, flush, 21.1' to Corner 1, 84.4' to Corner 2
- B - Mag nail set in E. side wood post, 2' a.g., 68.6' to Corner 1, 1.5' to Corner 2
- C - South edge, 36" diameter Osage Orange tree, 3' a.g., 96.2' to Corner 1, 44.3' to Corner 2
- D - West edge, 21" diameter Hickory tree, 4' a.g., 69.1' to Corner 1, 132.9' to Corner 2

Kenneth E. Hedge
Kenneth E. Hedge, County Surveyor

James S. Swift
James S. Swift, IN-LS 20200054

October 13, 2020



Washington Township Clinton Township

Section 12 T19N, R1W	Section 7 T19N, R1E
Section 13 T19N, R1W	Section 18 T19N, R1E

Center Township

SECTION CORNER RECORD

NE 400-050

BOONE COUNTY SURVEYOR'S OFFICE

State Plane grid coordinates NAD83 (2011):

North: 1766786.88 East: 3127191.86 (U.S. survey feet)

Type of monument: Harrison, 4" disk 'Section Corner'

Depth: Three inches above adjacent ground

Indiana tie card references:

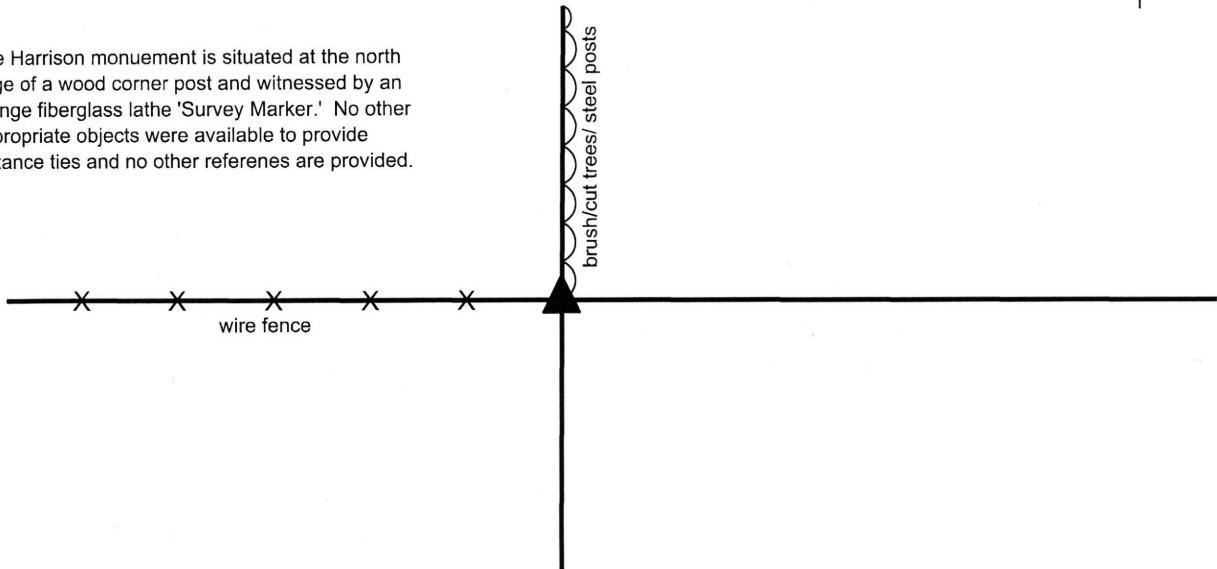
IN02_T19NR1E07_76 IN02_T19NR1E18_04



CORNER WITNESS DETAIL

No scale

The Harrison monument is situated at the north edge of a wood corner post and witnessed by an orange fiberglass lathe 'Survey Marker.' No other appropriate objects were available to provide distance ties and no other referenes are provided.

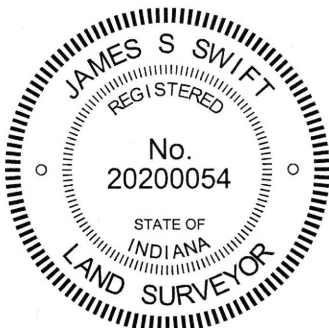


The Harrison Monument was set in place of a stone found.

A BCS record of September 7, 1863 states, with respect to this corner, "One tree gone, the other turned out by the roots, found a stone at corner." A subsequent record of February 7, 1873 references the corner as a terminal point for measurements but makes no mention of a monument, presumably holding the stone found 10 years earlier. No recent BCS tie cards were found referencing this corner.

Excavation was performed at this corner of November 27, 2017. Prior to excavation, no specific artificial survey monuments were known to represent the corner and the most obvious evidence of the corner was a wood corner post with standing fencing to the west, fencing cut-off to the east and in line with a line of steel posts, brush and cut trees to the north. The position of the post fit well with proximate corners. Excavation around the post revealed several stones. Two small stones were found on the east side of the post and a larger stone was found at the north edge of the post. The stone was not vertical, as found, but also did not appear to be acting as a brace rock for the post. The stone, as found, was 19 inches E-W by 10 inches N-S by 10 inches tall. An etched + mark was found on the top side, near the west edge of the rock. Given the size, position and mark, the rock was accepted as representing the stone found and referenced in 1863. In the field, it appeared most likely that the stone was on its side. The stone was accepted as representing the best available evidence of the corner. The stone was removed and replaced with a Harrison monument in the position of the main body of the stone, as originally found.

This corner was originally established as a wood post in 1822.



Kenneth E. Hedge
Kenneth E. Hedge, County Surveyor

James S. Swift
James S. Swift, IN LS 20200054
January 17, 2018

Clinton
Township

Section 7
T19N, R1E

Center
Township

Section 18
T19N, R1E

SECTION CORNER RECORD

NE 400-100

BOONE COUNTY SURVEYOR'S OFFICE

State Plane grid coordinates NAD83 (2011):

North: 1766779.94 East: 3129833.33 (U.S. survey feet)

Type of monument: Harrison, 4" disk 'Section Corner'

Depth: Flush with surrounding ground

Indiana tie card references:

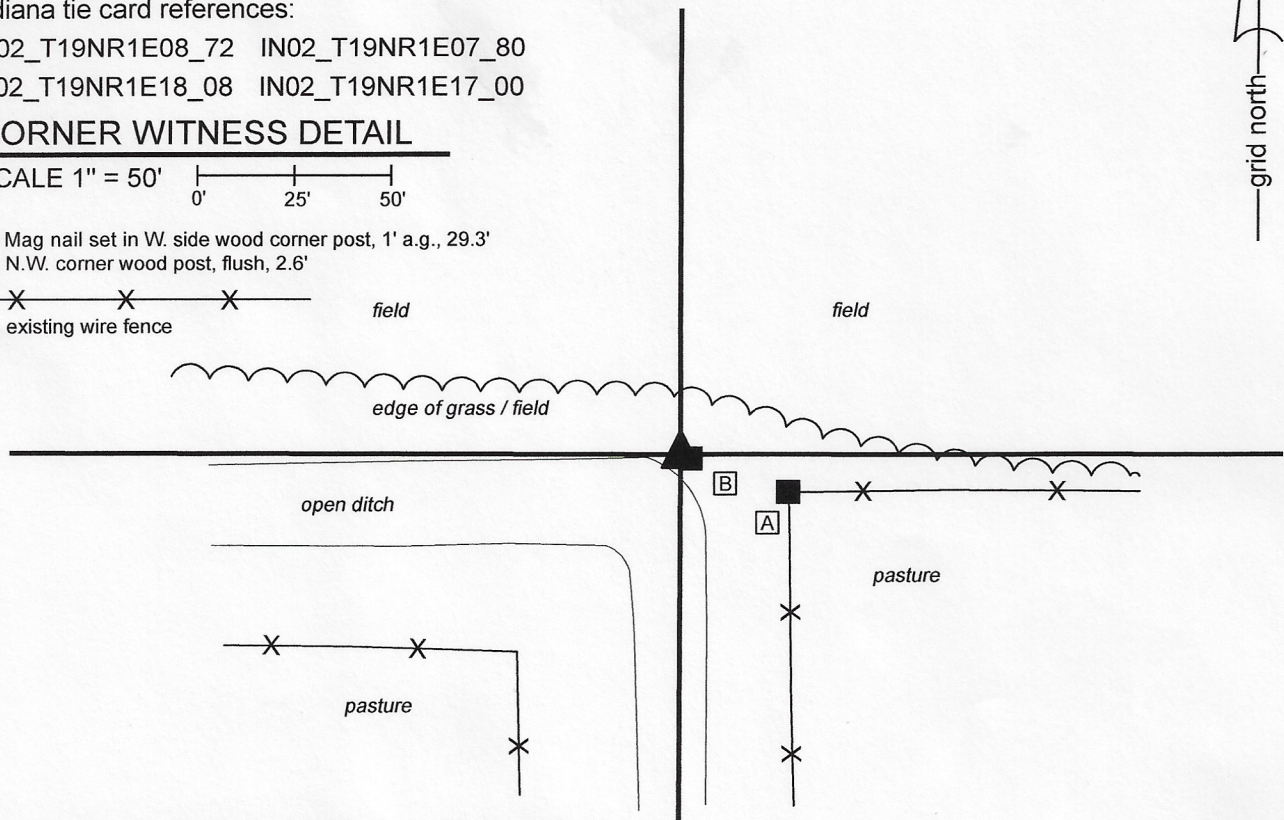
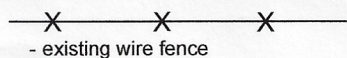
IN02_T19NR1E08_72 IN02_T19NR1E07_80

IN02_T19NR1E18_08 IN02_T19NR1E17_00

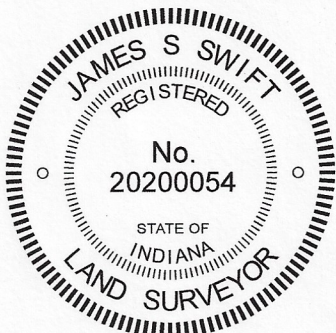
CORNER WITNESS DETAIL

SCALE 1" = 50'

A - Mag nail set in W. side wood corner post, 1' a.g., 29.3'
 B - N.W. corner wood post, flush, 2.6'



The Harrison monument was set in place of a Harrison monument found.
 A BCS record dated March 9, 1886 states, with respect to this corner, "Reestablished by measurement (found point of stake) and set rock 20.14.12 + top - north 10 feet set wit 20.18.12."
 A BCS tie card dated September 28, 2005 calls the corner a Harrison monument.
 The Harrison monument was found in good condition, though not firmly attached to the ground, as shown on the 2005 tie card. The monument is 2.6 feet NW of the northwest edge of a wood corner post and 1 foot north of a rock found embedded in the soil. It is observed that this corner falls along the north edge of a deep open ditch. Clearly the immediate vicinity of the corner has been excavated and disturbed in the past. The wood post is not held as ancient evidence of the corner, as local landowner Tom Cunningham reports that the post was set in the 1960s following a tornado and has been doubted as representing the corner. The found stone is not of the same dimensions as called in the 1886 record and appears to have been haphazardly set. It does not appear to have been purposely set to mark the corner. No explanation is offered on the 2005 tie card for why the monument was set at its precise location, though it is noted that the position of the monument fits well with monumentation found marking property corners of properties along Elm Swamp Road, to the west, with respect to calls for the center of that road and the east line of the west half of the northeast quarter of section 18. The monument is situated slightly west of the southerly prolongation of fencing found providing evidence of the west line of the southwest quarter of section 8. Overall, up to 3 feet of uncertainty in all directions may be attributed to the position of the monument with respect to the found evidence. No evidence was found, however, which firmly disputes the position of the existing county monument so that position was held as the position of the corner. The existing Harrison was removed and replaced with a new Harrison, set firmly in concrete on May 13, 2020.
 This corner was originally established as a wood post in 1822.



Kenneth E. Hedge
 Kenneth E. Hedge, County Surveyor

James S. Swift
 James S. Swift, IN LS 20200054
 June 30, 2020

Clinton Township

Center Township

Section 7 T19N, R1E	Section 8 T19N, R1E
Section 18 T19N, R1E	Section 17 T19N, R1E

SECTION CORNER RECORD

NE 450-000

BOONE COUNTY SURVEYOR'S OFFICE

State Plane grid coordinates NAD83 (2011):

Corner 1: North: 1769388.24 East: 3124824.30 (U.S. survey feet)

Corner 2: North: 1769441.43 East: 3124824.27 (U.S. survey feet)

Corner 1: Harrison, 4" disk 'Section Corner', flush with adjacent ground

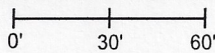
Corner 2: Harrison, 4" disk 'Section Corner', 3" above adjacent ground

Indiana tie card references:

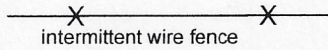
IN02_T19NR1E07_36 IN02_T19NR1W12_44

CORNER WITNESS DETAIL

SCALE 1" = 60'



A - South edge 42" diameter Oak tree, 6' a.g.,
75.9' to Corner 1, 22.7' to Corner 2

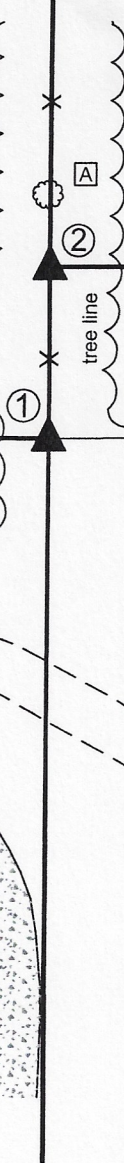


intermittent wire fence



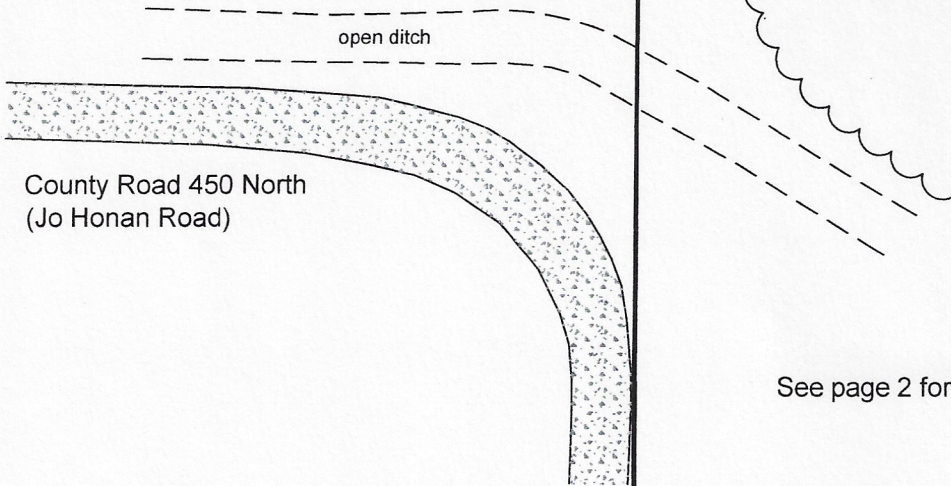
edge of field/grass/brush

field

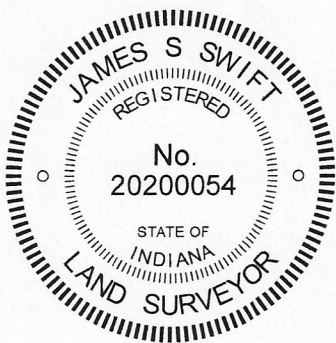


① East Quarter Corner
Section 12, T 19 N, R 1 W
Harrison Monument Set

② West Quarter Corner
Section 7, T 19 N, R 1 E
Harrison Monument Set
Distance between corners 53.20'



See page 2 for written documentation

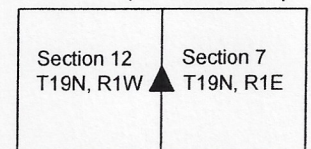


Kenneth E. Hedge
Kenneth E. Hedge, County Surveyor

James S. Swift
James S. Swift, IN LS 20200054

October 13, 2020 Page 1 of 2

Washington Township Clinton Township



SECTION CORNER RECORD

NE 450-000

BOONE COUNTY SURVEYOR'S OFFICE

Written Documentation Sheet

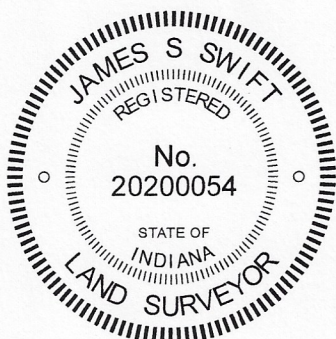
Please refer to page 1 of 2 for additional information.

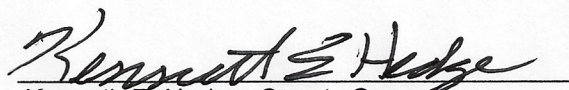
The Harrison monuments at both corners were set in place of Harrison monuments found.

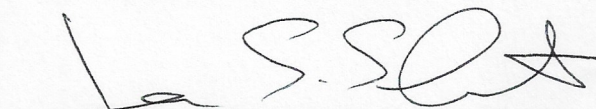
Corner 1 is an original federal corner, set on the Second Principal Meridian in 1819. Corner 2 is not an original federal corner.

No specific descriptions of these corners were found in the BCS Surveyor's Record, nor were they found referenced in surveys recorded in the Boone County Recorder's Office. The corners are referenced on BCS tie sheets dated September 30, 2005 which show both corners as Harrison Monuments with no information about why the corners were established in these positions.

Analysis of the relative positions of the monuments with respect to adjacent corners and local evidence indicates that Corner 2 was established at the intersection of a north-south fence with the westerly prolongation of an east-west fence which provides evidence of the south line of the northwest quarter of Section 7 from the apparent center of section of Section 7 west for approximately one-quarter mile. The deed for the adjacent land to the east of the corner (Instrument 0207793, Boone County Recorder) does not call out this corner, referring simply to the west line of the west half of section 7. The position of the Harrison monument found at Corner 2 fits with local evidence the form of the aforementioned fences and also fits well with the relative positions of proximate corners. It is noted that the monument at Corner 2 was leaning substantially toward the northeast as found. The Harrison monument found at Corner 1 was broken off at the top, as found, but otherwise evidently undisturbed. This monument was situated at the base of a broken corner post for fences to the north and east. The specific reason for why the corner was established at this position is not known and it is noted that the fence to the east does not necessarily provide evidence of the position of Corner 1, as this corner controls lines to the west, not the east. It is also noted that the corner is north of an expected position, both with respect to the relative position of Corner 2 and original federal closing offsets at the northwest and southwest corners of section 7 and also with respect to the physical evidence of the east-west road which runs generally straight through most of the center of Section 12 before bending toward the south, slightly west of the meridian line. Computing the range line offset at these corners with respect to the record federal offsets at the northwest and southwest corners of Section 7, it would be expected that the corners should be separated by 116.5 links of 76.89 feet. Estimating the position of Corner 1 with respect to the physical evidence of the east-west road, it is expected that the corners would be separated by approximately one chain or 66 feet. However, no specific documentation or accessory evidence, other than the east-west road, was found to support either of the positions which are further south than the found monument. A field division in the vicinity of the north line of the southeast quarter of the northeast quarter of Section 12 is sufficiently vague that it does not provide reliable accessory evidence for Corner 1. The deed for a house in the southeast quarter of the northeast quarter of Section 12 (see Instrument 200700004207, Boone County Recorder) specifically calls for the south line of the northeast quarter of Section 12 to be north of the road. Retracement of this description clearly indicates that the south line of the northeast quarter was held on a line connecting an iron pipe at the generally accepted center of Section 12 and the position of the Harrison monument shown on the 2005 tie card. Hence, while it is noted that the fence to the east does not necessarily provide evidence of corners in Section 12 and that the position of Corner 1 may be expected to fall south of the known monument, conclusive proof to defeat the prima facie evidence of the established county monument was not found. Furthermore, it is clear that the existing parcel in the southwest corner of the southeast quarter of the northeast quarter was laid off with respect to the established county monument. Manual excavation and probing in the vicinity of both corners, including the positions south of the monument at Corner 1, did not reveal any stones or other survey monuments. The BCS Surveyor's Record does not call for stones at either corner. Hence the position of the existing Harrison monument was held as marking Corner 1. This monument was replaced with a new Harrison monument set in concrete on October 7, 2020. The position of Corner 2 was established on the range line as defined by Corner 1 and the Harrison monument marking the northeast corner of Section 12 (see BCS Corner NW-500-000) at 53.20 feet from Corner 1, per the 2005 BCS tie card. This position fit well with the disturbed monument found at the corner within the uncertainty of the disturbed quality of the monument. A Harrison monument was set in concrete at this position on October 7, 2020.




Kenneth E. Hedge, County Surveyor


James S. Swift, IN LS 20200054

October 13, 2020 Page 2 of 2

Washington Township Clinton Township

Section 12 T19N, R1W	Section 7 T19N, R1E
-------------------------	------------------------

SECTION CORNER RECORD

NE 450-100

BOONE COUNTY SURVEYOR'S OFFICE

State Plane grid coordinates NAD83 (CORS96):

North: 1769421.18 East: 3129833.31 (U.S. survey feet)

Type of monument: Harrison, 4" disk 'Section Corner'

Depth: six inches below adjacent gravel road surface

Indiana tie card references:

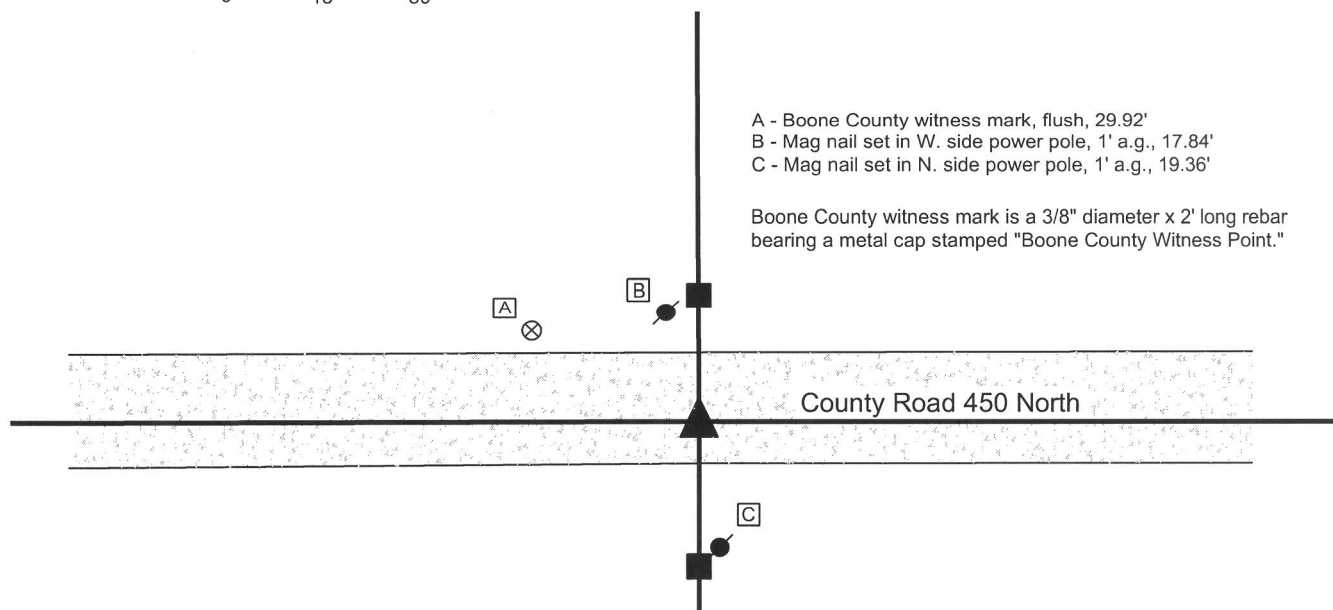
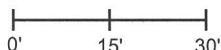
IN02_T19NR1E07_44

IN02_T19NR1E08_36



CORNER WITNESS DETAIL

SCALE 1" = 30'

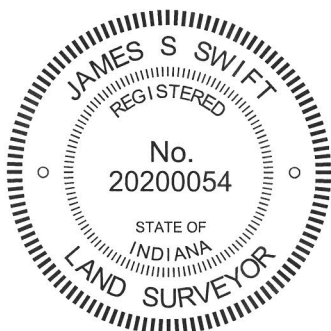


The harrison monument was set in place of a vertical section of railroad rail found.

A BCS record of February 28, 1872 states "Reestablished from stump of Ash drove stake and put a Rock 12.7.6 +..." A BCS tie card dated July, 1968 states "No stone." A BCS tie card dated August 28, 2005 shows the corner as a railroad rail with no documentation of source.

This corner was excavated on June 18, 2012. Prior to excavation a railroad rail was found at 1 inch deep, slightly south of center of the county road. Excavation of an area extending 2 feet south, 6 feet north, 5 feet east and 5 feet west of the rail revealed no further evidence of the corner. It is noted that the road bed in this area is of minimal thickness, being only approximately 6 inches. The stone described in the 1872 record was not large. Given the minimal depth of the road and the small size of the stone, it is reasonable to conclude that the stone may have been removed by road grading equipment. The rail fit generally with local evidence, being in the east-west road and in line with the posts to the north and south. The rail was 19.5 feet south of old post on the north side of the road, approximately 2 feet south of the center of the gravel road. Excavation was performed in area far enough north to center the area of excavation on a position approximately 1 rod (16.5 feet) south of the old post. As no other evidence was found, the rail was held as marking the corner. The rail was removed during excavation and replaced with a harrison monument in the same position.

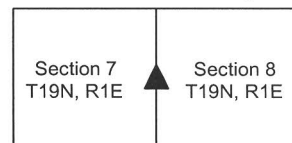
This corner was originally established as a wood post in June, 1822.



Kenneth E. Hedge, County Surveyor

James S. Swift, IN LS 20200054
February 6, 2013

Clinton Township



SECTION CORNER RECORD

BOONE COUNTY SURVEYOR'S OFFICE

NE 500-000

State Plane grid coordinates NAD83 (CORS96):

Corner 1: North: 1772009.54 East: 3124823.06 (U.S. survey feet)

Corner 2: North: 1772102.14 East: 3124822.80 (U.S. survey feet)

Type of monument: Harrison, 4" disk 'Section Corner'

Depth: flush to 2 inches above adjacent ground.

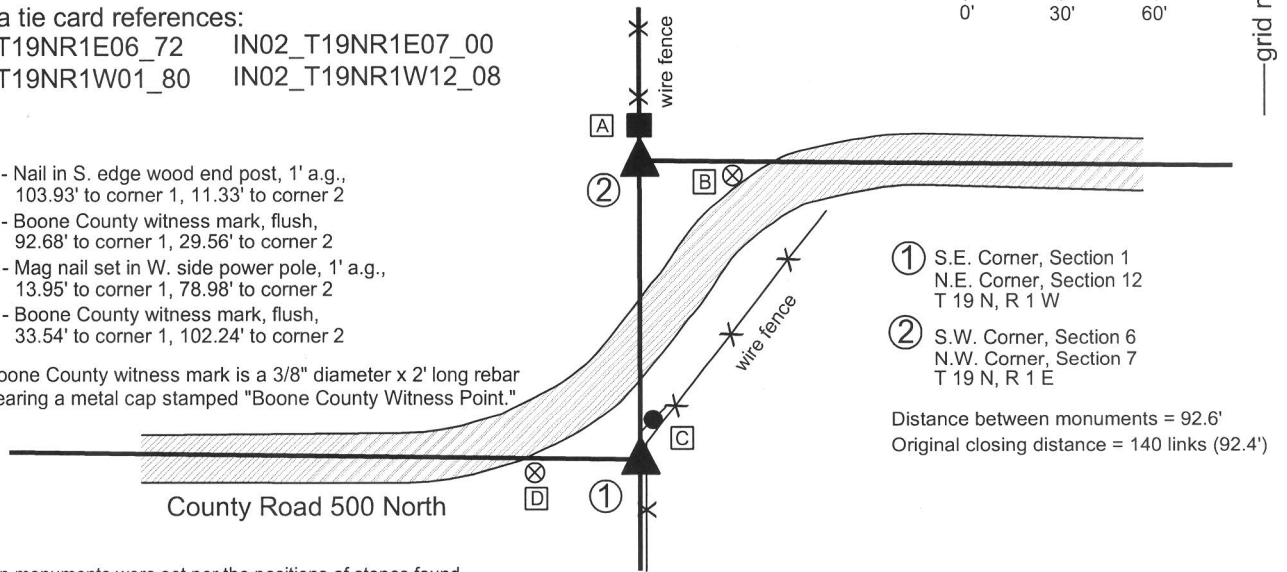
Indiana tie card references:

IN02_T19NR1E06_72 IN02_T19NR1E07_00

IN02_T19NR1W01_80 IN02_T19NR1W12_08

- A - Nail in S. edge wood end post, 1' a.g., 103.93' to corner 1, 11.33' to corner 2
- B - Boone County witness mark, flush, 92.68' to corner 1, 29.56' to corner 2
- C - Mag nail set in W. side power pole, 1' a.g., 13.95' to corner 1, 78.98' to corner 2
- D - Boone County witness mark, flush, 33.54' to corner 1, 102.24' to corner 2

Boone County witness mark is a 3/8" diameter x 2' long rebar bearing a metal cap stamped "Boone County Witness Point."



- ① S.E. Corner, Section 1
N.E. Corner, Section 12
T 19 N, R 1 W
- ② S.W. Corner, Section 6
N.W. Corner, Section 7
T 19 N, R 1 E

Distance between monuments = 92.6'
Original closing distance = 140 links (92.4')

The harrison monuments were set per the positions of stones found.

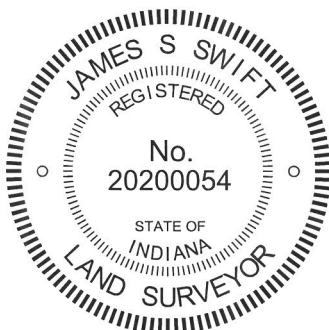
A BCS record of May 9, 1872 pertaining to the southwest corner of section 6, T19N, R1E (corner 2) states "Reestablished from Elm and Stump of Burr Oak. Elm is 67 links dist. Set Rock 14.8.5 1/2 marked +." A BCS record of April 19, 1895 pertaining to the southeast corner of section 1, T19N, R1W (corner 1) states "Set rock 24x15x5 established from lap." It is noted that the term "lap" refers to the offset distance between the standard and closing corners on the range line. At this corner the "lap" recorded in the original notes is 140 links, or 92.4 feet.

BCS tie cards dated October 14, 1971 pertaining to each of the corners state that a stone was found at corner 1 and that no stone was found and a RRR (railroad rail) was "put in" at corner 2. The tie cards show the two corners to be 97 feet apart. A BCS tie card dated January 18, 1994 pertaining to corner 1 shows the corner as being a 1/2 inch rebar. This card shows corner 1 to be 108 feet south of a corner post to the north. As the rail called for in the 1971 tie card was found at 11 feet south of this post and the stone called for in 1971 tie card was shown to be 97 feet south of the rail, it is evident that the 1/2 inch rebar called for in 1994 was in the position of the stone called for in 1971. A pair of BCS tie cards dated September 20, 2005 show corner 1 as a harrison monument and corner 2 as a railroad rail, with the two monuments at 92.39 feet apart.

Excavation in the fall of 2013, concluding on October 29, 2013 revealed both of the record stones described in the 1872 and 1895 records. The stone at corner 1 was found at 4 inches deep, slightly southwest of the harrison monument shown on the 2005 record. This stone measures 24 inches tall by 15 inches N-S by 5 inches E-W. The rebar shown on the 1994 tie card was found 4.6 feet south and 1.4 feet west of the stone. The stone at corner 2 was found 0.8 feet south and 0.8 feet east of the railroad rail shown on the 1971 and 2005 tie cards. This stone was found at 6 inches deep and measured 14 inches tall by 8 inches E-W by 5 1/2 inches N-S. The distance measured from the high point to the high point of the respective stones was 92.6 feet, barely longer than the record call of 140 links (92.4 feet). The harrison monument and railroad were both removed. The stone at corner 2 was also removed and replaced with a harrison monument set at the position of the high point of the stone. The stone at corner 1 was left in place. The specific position of corner 1 was determined at 92.6 feet along the prolongation of the range line from the standard corner 1/2 mile north through the stone at corner 2. This point fell slightly east of the high point of the stone. A 15 inch diameter section of HDPE storm pipe was notched and set vertically over and amongst the stone. The stone was encased in concrete and the harrison monument was set at the calculated point slightly east of the high point of the stone. It is noted that typically the closing corner is shifted to fit to the range line, per the procedures of the original federal surveyors. However, in this case it is clear the stone at corner 2 was established first per the bearing trees and that the stone at corner 1 was established relative to corner 2. Hence, in this particular case, corner 2 was held as the dominant corner for purposes of establishing the range line, though given that corner 1 was established along the prolongation of the line from the north through corner 2, the bend in the range line occurs at corner 1, as is typical. Corner 2 falls on the range line with no bend at that point.

No stone was found near the 1/2 inch rebar called for in the 1994 tie card. An adjoining land owner stated that a large rock had been visible above ground at that point but was removed many years ago.

Corner 1 was established in October, 1819 and corner 2 was originally established in June, 1822.



Kenneth E. Hedge
Kenneth E. Hedge, County Surveyor

James S. Swift
James S. Swift, IN LS 20200054
February 5, 2015

Washington Township	Clinton Township
Section 1 T19N, R1W	Section 6 T19N, R1E
Section 12 T19N, R1W	Section 7 T19N, R1E

PHOTOGRAPHIC DOCUMENTATION

Date of photography: October 22-29, 2013

View from above showing the stone at the closing corner and the railroad rail.



The closing corner and the fence to the north.



View from above the stone at the closing corner, looking east along C.R. 500 North.



The stone at the standard corner, and the harrison monument found. See documentation.



The stone at the standard corner. View from above and west.



For details and documentation, refer to related sheet "Section Corner Record."

SECTION CORNER RECORD

NE 500-050

BOONE COUNTY SURVEYOR'S OFFICE

State Plane grid coordinates NAD83 (CORS96):
North: 1772080.80 East: 3127182.04 (U.S. survey feet)

Type of monument: Harrison, 4" disk 'Section Corner'
Depth: One inch below adjacent road surface

Indiana tie card references:
IN02_T19NR1E06_36
IN02_T19NR1E07_04

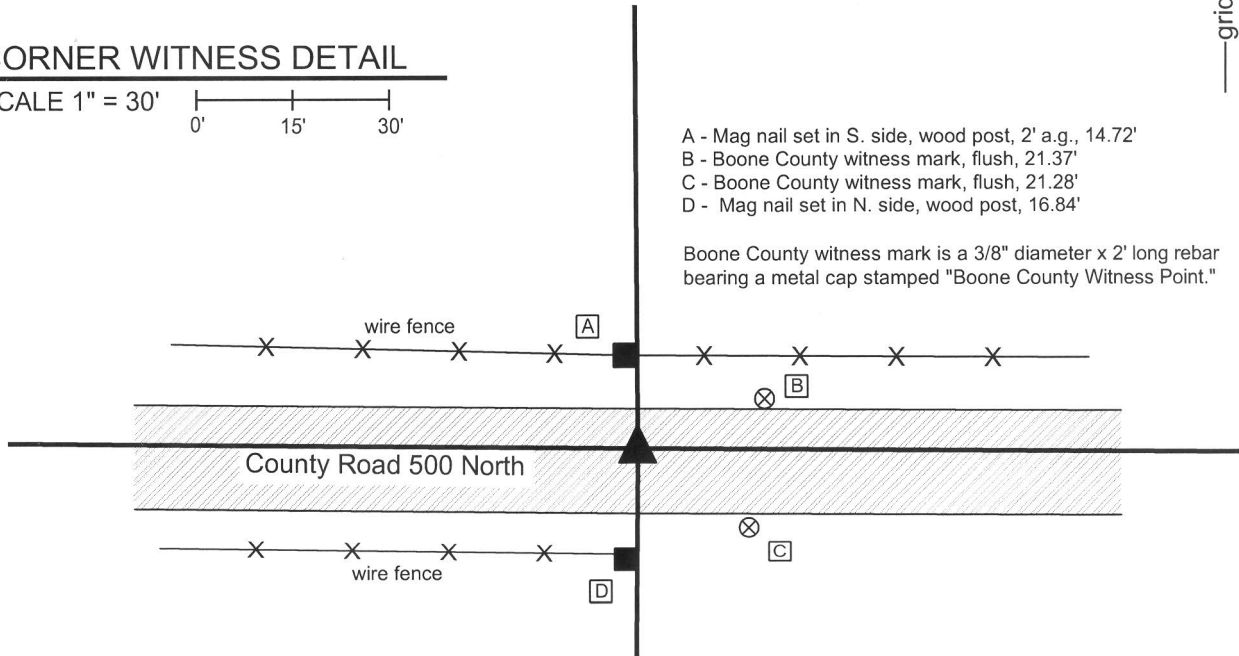


CORNER WITNESS DETAIL

SCALE 1" = 30'

- A - Mag nail set in S. side, wood post, 2' a.g., 14.72'
- B - Boone County witness mark, flush, 21.37'
- C - Boone County witness mark, flush, 21.28'
- D - Mag nail set in N. side, wood post, 16.84'

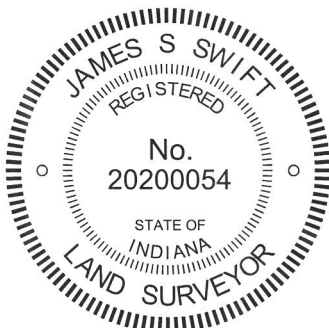
Boone County witness mark is a 3/8" diameter x 2' long rebar bearing a metal cap stamped "Boone County Witness Point."



The harrison monument was set over a stone found.

A BCS record of May 9, 1872 states "Reestablished from Sycamore. Set Rock 11.7.51/2 +." A BCS tie card dated July 16, 1975 states "no stone found set rod." A BCS tie card dated August 2, 2005 shows the corner as a harrison monument with no documentation of source.

This corner was excavated on November 12, 2013. Prior to excavation, a harrison monument was found 2 inches deep in a hole in the asphalt road. Excavation revealed a stone found at 11 inches. The stone appeared to be leaning slightly towards the southwest. With the top 6 inches of the stone exposed it measured 7 inches N-S by 5 1/2 inches E-W. A vague mark was visible on the east edge of the stone. The stone was embedded in the clay layer below the road bed with the top of the stone at the bottom of the road bed. The stone was accepted as being the monument described in the 1872 record and was held as marking the corner. The stone was left in place and a harrison monument was set over the top of the stone at the apparent position which would have been the center of mass of the stone before it was leaned slightly southwest. The harrison monument found prior to excavation had been 1.2 feet south and 1.5 feet west of the stone. This corner was originally established as a wood post in 1822.



Kenneth E. Hedge, County Surveyor

James S. Swift, IN LS 20200054
February 5, 2015

Clinton Township

Section 6
T19N, R1E



Section 7
T19N, R1E

PHOTOGRAPHIC DOCUMENTATION

Date of photography: November 12, 2013

The stone as first exposed.
View from above and south.



View of the stone from above and east.



The stone, slightly east of the post on the
south side of the road.



View from above the stone looking west
along County Road 500 North.



For details and documentation, refer to
related sheet "Section Corner Record."

SECTION CORNER RECORD

NE 500-100

BOONE COUNTY SURVEYOR'S OFFICE

State Plane grid coordinates NAD83 (CORS96):

North: 1772060.68 East: 3129821.84 (U.S. survey feet)

Type of monument: Harrison, 4" disk 'Section Corner'

Depth: six inches below adjacent gravel road surface

Indiana tie card references:

IN02_T19NR1E06_80 IN02_T19NR1E05_72

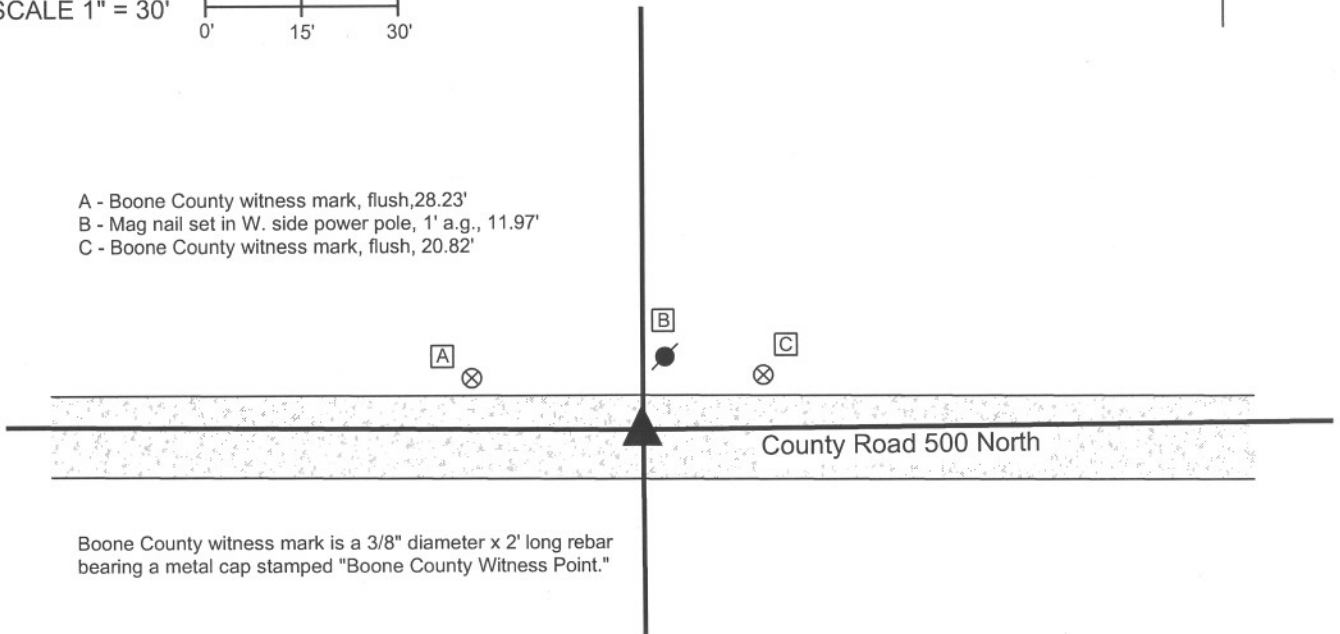
IN02_T19NR1E07_08 IN02_T19NR1E08_00



CORNER WITNESS DETAIL

SCALE 1" = 30'

- A - Boone County witness mark, flush, 28.23'
- B - Mag nail set in W. side power pole, 1' a.g., 11.97'
- C - Boone County witness mark, flush, 20.82'



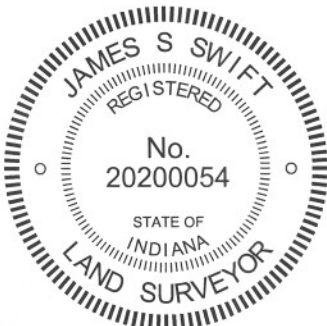
Boone County witness mark is a 3/8" diameter x 2' long rebar bearing a metal cap stamped "Boone County Witness Point."

The harrison monument was set in place of a harrison monument found.

No specific descriptions of this corner were found in the BCS Surveyor's Record. A BCS tie card dated September 29, 2005 shows the corner as a harrison monument with no documentation of source.

This corner was excavated on June 19, 2012. Prior to excavation a harrison monument was found which fit with the 2005 distance ties. Excavation of an area extending 4 feet north, 5 feet east, 4 feet south and 4 feet west of the harrison monument revealed no further evidence of the corner. The road bed is only 6 inches in this area. The harrison monument fit with local evidence in the form of the center of the county road to the east and west and the broken-off wood post on the north side of the road. The position of the found harrison was held as the corner. The found harrison monument was removed during excavation and replaced with a new harrison in the same position.

This corner was originally established as a wood post in June, 1822.



Kenneth E. Hedge
Kenneth E. Hedge, County Surveyor

James S. Swift
James S. Swift, IN LS 20200054
January 15, 2013

Clinton Township

Section 6 T19N, R1E	Section 5 T19N, R1E
Section 7 T19N, R1E	Section 8 T19N, R1E