

SECTION CORNER RECORD

BOONE COUNTY SURVEYOR'S OFFICE

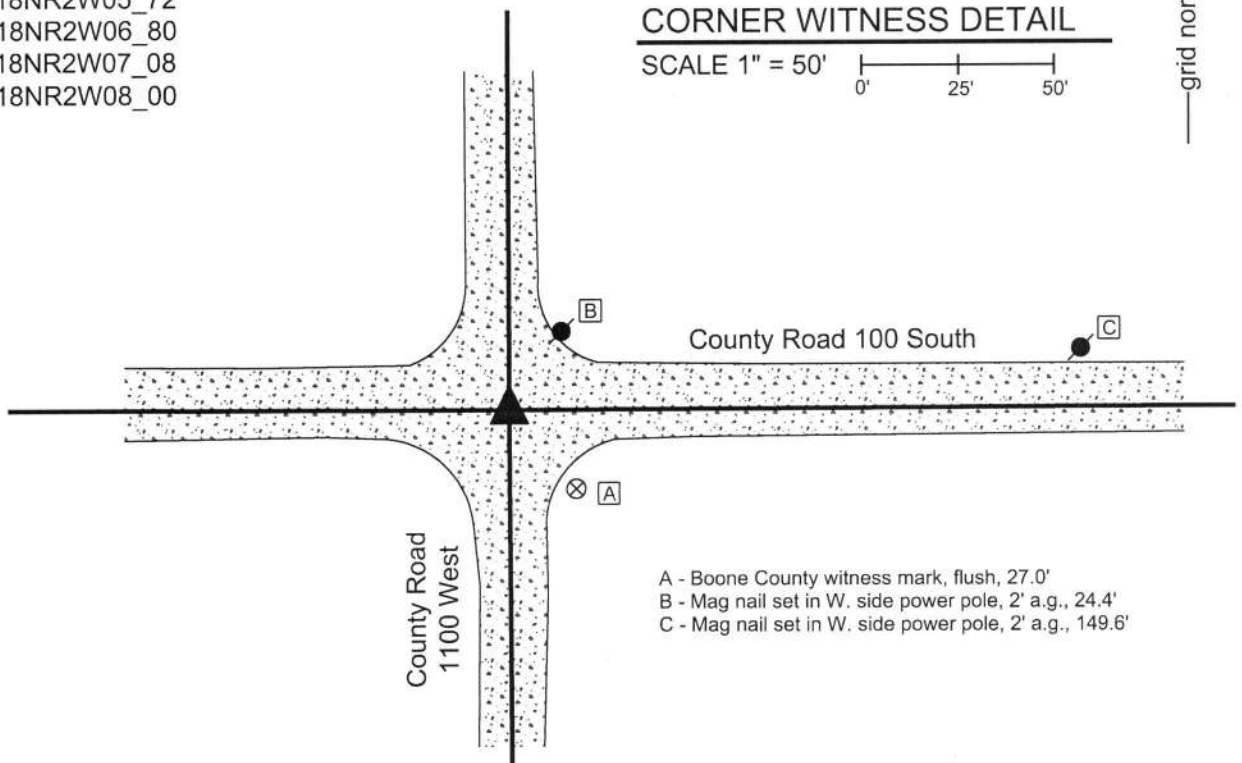
SW 100-1100

State Plane grid coordinates NAD83 (2011):
 North: 1739969.79 East: 3066677.34 (U.S. survey feet)

Type of monument: Harrison, 4" disk 'Section Corner'
 Depth: Six inches below adjacent gravel road surface.

Indiana tie card references:

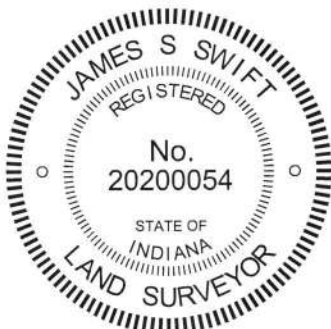
- IN02_T18NR2W05_72
- IN02_T18NR2W06_80
- IN02_T18NR2W07_08
- IN02_T18NR2W08_00



The Harrison monument was set over a stone found. No specific descriptions of this corner were found in the BCS Surveyor's Record, though the corner is mentioned as the terminal point for measurements in entries of 1835, 1897 and 1898, indicating that some monument was present from which to measure at those times. In particular, the 1897 and 1898 measurement references indicate the presence of a known monument at the corner. A BCS tie card dated May 19, 1994 shows the corner as a rebar with no reference to source or origin.

This corner was excavated on April 12, 2019. Prior to excavation, a 5/8 inch diameter rebar was found slightly below the surface of the road. The rebar was bent substantially, clearly disturbed in its position. A 1/2 inch diameter rebar was found slightly south of the 5/8 inch rebar. Excavation revealed a stone found at 11 inches deep, south and west of the rebars. The top 10 inches of the stone were exposed, as which point it measured 4 inches N-S by 8 inches E-W. With the top 10 inches exposed, the stone was entirely stable in the ground, indicating that it is yet substantially taller. The stone was oriented in cardinal directions and the south edge of the stone is flat and vertical. No specific marks were observed on the stone. It is fully embedded in the clay layer below the road, protruding 1 inch into the bottom of the road bed. The stone has a clear a distinct high point at the top, center. The stone was accepted as the best available evidence of the original position of the corner and the top, center high point was held as the specific position of the corner. The top 10 inches of the stone were encased in concrete and a Harrison monument, broken off at 4 inches, was set directly over the high point. The 5/8 inch rebar, removed during excavation, had been approximately 1 foot east and 2 feet north of the stone. This monument is most likely the same monument as is called in the 1994 tie card, though insufficient distance tie references were available to positively confirm this fact.

This corner was originally established as a wood post in 1820.



Kenneth E. Hedge
 Kenneth E. Hedge, County Surveyor

James S. Swift
 James S. Swift, IN LS 20200054

April 30, 2019

Jefferson Township

Section 6 T18N, R2W	Section 5 T18N, R2W
Section 7 T18N, R2W	Section 8 T18N, R2W

SECTION CORNER RECORD

SW 100-1150

BOONE COUNTY SURVEYOR'S OFFICE

State Plane grid coordinates NAD83 (2011):

North: 1739978.00 East: 3064035.90 (U.S. survey feet)

Type of monument: Harrison, 4" disk 'Section Corner'

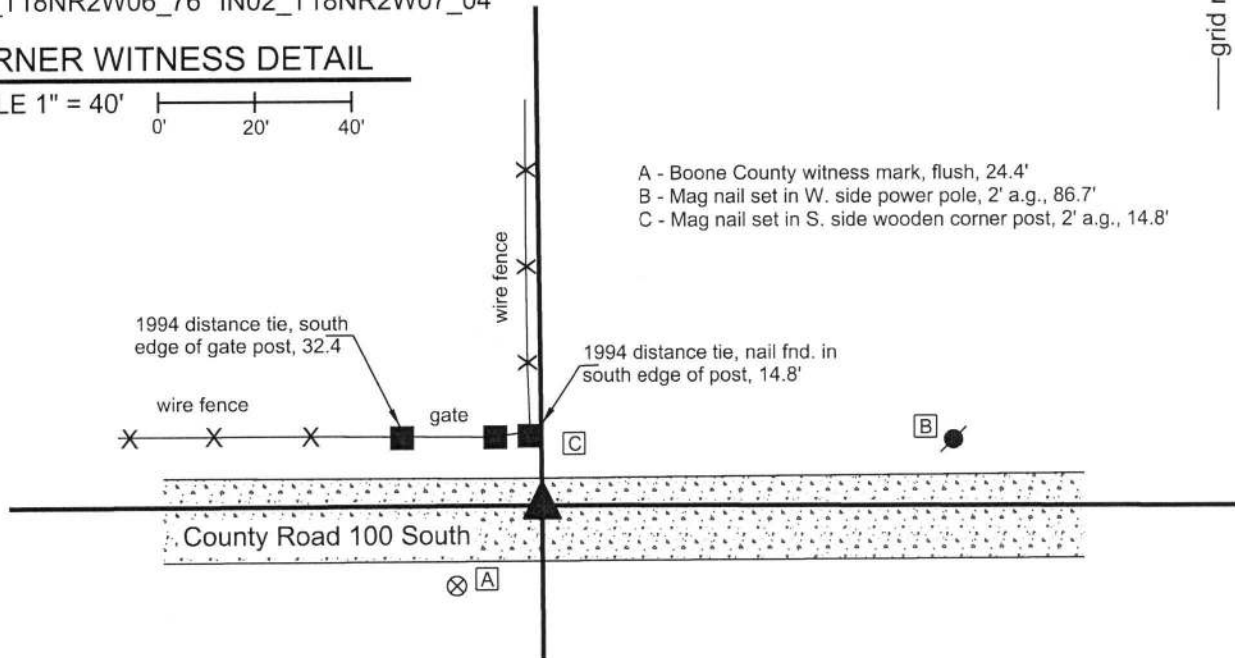
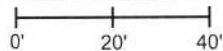
Depth: Six inches below adjacent gravel road surface

Indiana tie card references:

IN02_T18NR2W06_76 IN02_T18NR2W07_04

CORNER WITNESS DETAIL

SCALE 1" = 40'



- A - Boone County witness mark, flush, 24.4'
- B - Mag nail set in W. side power pole, 2' a.g., 86.7'
- C - Mag nail set in S. side wooden corner post, 2' a.g., 14.8'

1994 distance tie, south edge of gate post, 32.4'

1994 distance tie, nail fnd. in south edge of post, 14.8'

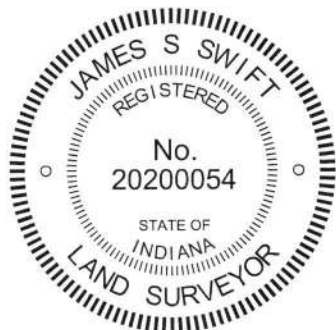
County Road 100 South

The Harrison monument was set in the position of a railroad spike, as perpetuated from a BCS tie card dated June 27, 1994.

No specific descriptions of this corner were found in the BCS Surveyor's Record beyond the original establishment of the corner as a wood post in 1820 and a measurement reference in an entry of 1834.

The 1994 tie card clearly demonstrates that the corner was set in the approximate center of the road, in-line with a fence and corner post to the south and slightly east of a fence to the north.

Excavation was performed at this corner on April 12, 2019. Prior to excavation, no metal monuments were found marking the corner. Two distance tie references shown on the 1994 tie card were found. The position of the corner was established by resection from the two remaining ties. This placed the corner approximately 2.5 feet east of the wood post and fence on the north side of the road, in agreement with the graphical representation on the 1994 tie card. The post and fence to the south are no longer present. Excavation of an area extending 2 feet north, 4 feet east, 3 feet south and 5 feet west of the resected position of the corner revealed no further evidence. It was observed that the road bed is only 7 inches thick in this vicinity. Any stones which may have been present previously may well have been destroyed by grading equipment on this thin road bed. The railroad spike shown on the 1994 tie card was not found. It was observed that the post and fence to the north do not appear to be ancient. No statement of age of evidence is mentioned on the 1994 tie card, but given that the corner was held as being in-line with the fence to the south, it is considered likely that the fence to the south appeared more ancient and was held as the dominant evidence on that count. No physical evidence was found which contradicted the representation of the corner on the 1994 tie card. The position of the corner as resected from the two remaining 1994 distance ties was held. A Harrison monument was set at this position. This corner was originally established as a wood post in 1820. It is noted that this corner is a quarter corner immediately east of a range line. The position of the corner works reasonably well with the proportional relationship of the corners to the east and west with respect to the distances reported in the original federal notes.



Kenneth E. Hedge
Kenneth E. Hedge, County Surveyor

James S. Swift
James S. Swift, IN LS 20200054
April 30, 2019

Jefferson Township

Section 6
T18N, R2W

Section 7
T18N, R2W

SECTION CORNER RECORD

SW 100-1200

BOONE COUNTY SURVEYOR'S OFFICE

State Plane grid coordinates NAD83 (2011):

Corner 1: North: 1740094.90 East: 3061289.53 (U.S. survey feet)

Corner 2: North: 1739969.61 East: 3061290.63 (U.S. survey feet)

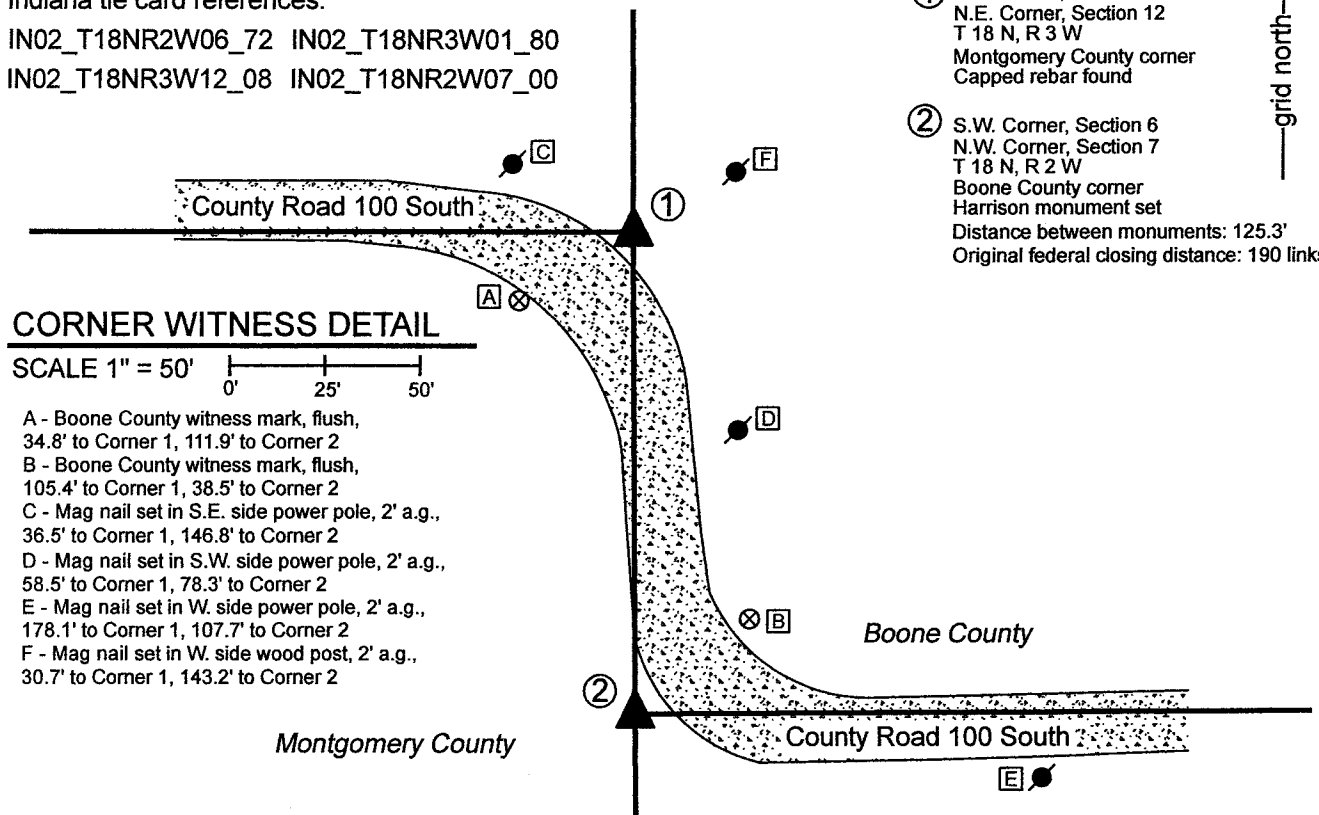
Corner 1: 5/8" rebar with aluminum cap stamped
'Montgomery County Surveyor' 1 inch below adjacent grade

Corner 2: Harrison, 4" disk 'Section Corner', flush

Indiana tie card references:

IN02_T18NR2W06_72 IN02_T18NR3W01_80

IN02_T18NR3W12_08 IN02_T18NR2W07_00



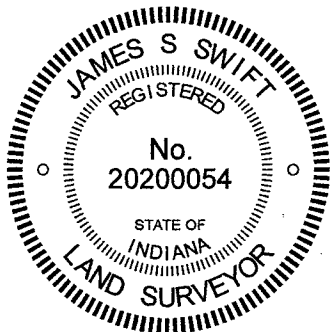
- ① S.E. Corner, Section 1
N.E. Corner, Section 12
T 18 N, R 3 W
Montgomery County corner
Capped rebar found
- ② S.W. Corner, Section 6
N.W. Corner, Section 7
T 18 N, R 2 W
Boone County corner
Harrison monument set
Distance between monuments: 125.3'
Original federal closing distance: 190 links

CORNER WITNESS DETAIL

SCALE 1" = 50'

- A - Boone County witness mark, flush, 34.8' to Corner 1, 111.9' to Corner 2
- B - Boone County witness mark, flush, 105.4' to Corner 1, 38.5' to Corner 2
- C - Mag nail set in S.E. side power pole, 2' a.g., 36.5' to Corner 1, 146.8' to Corner 2
- D - Mag nail set in S.W. side power pole, 2' a.g., 58.5' to Corner 1, 78.3' to Corner 2
- E - Mag nail set in W. side power pole, 2' a.g., 178.1' to Corner 1, 107.7' to Corner 2
- F - Mag nail set in W. side wood post, 2' a.g., 30.7' to Corner 1, 143.2' to Corner 2

The Harrison monument at Corner 2 was set in place of a 1/2 inch diameter rebar found. No specific descriptions of this corner were found in the BCS Surveyor's Record beyond the original establishment of the corner as a wood post in 1820. No recent BCS tie cards were found referencing this corner. A 'Section Corner Dossier' sheet provided by the Montgomery County Surveyor shows Corner 1 as being a rebar with metal cap set with respect to the position of the rebar found at Corner 2. Excavation was performed at this corner on July 14, 2021. Prior to excavation, both rebars mentioned in the Montgomery County dossier were found. Excavation of an area 8 feet north-south by 6 feet east-west centered on the found 1/2 inch rebar revealed no further evidence of the corner. The position of the rebar fit well with the evidence of the county road to the east and is accepted as the best available evidence of the corner. The rebar is known to have been held as marking the corner by previous private surveys and was held as marking Corner 2 when Montgomery County established Corner 1. The position of the found rebar was held as marking the corner. The rebar was replaced with a Harrison Monument on July 14, 2021.



Kenneth E. Hedge
Kenneth E. Hedge, County Surveyor

James S. Swift
James S. Swift, IN LS 20200054
August 9, 2021

Walnut Township Montgomery County	Jefferson Township Boone County
Section 1 T18N, R3W	Section 6 T18N, R2W
Section 12 T18N, R3W	Section 7 T18N, R2W

SECTION CORNER RECORD

BOONE COUNTY SURVEYOR'S OFFICE

SW 150-1100

State Plane grid coordinates NAD83 (2011):

North: 1737330.42 East: 3066695.83 (U.S. survey feet)

Type of monument: Harrison, 4" disk 'Section Corner'

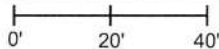
Depth: Six inches below adjacent road surface

Indiana tie card references:

IN02_T18NR2W07_44 IN02_T18NR2W08_36

CORNER WITNESS DETAIL

SCALE 1" = 40'

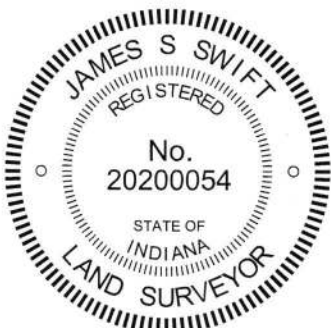
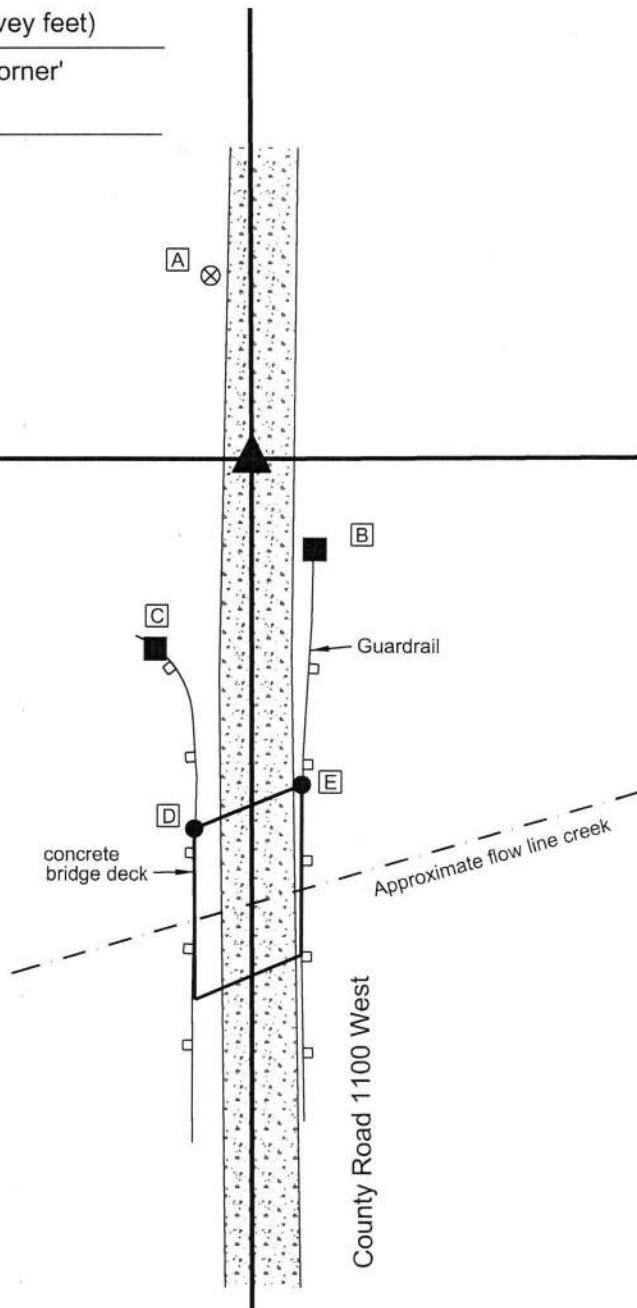


- A - Boone County witness mark, flush, 38.9'
- B - Notch in top center of guardrail post, 23.0'
- C - Notch in top center of guardrail post, 44.0'
- D - NW corner of bridge deck, 77.8'
- E - NE corner of bridge deck, 68.6'

The Harrison monument was set in place of a rebar found.

No specific descriptions of this corner were found in the BCS Surveyor's Record beyond the original establishment of the corner in 1820. A BCS tie card dated May 19, 1994 shows the corner as a rebar north of a concrete bridge.

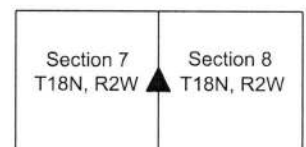
No large scale excavation was performed at this corner, as it falls in an area of substantial fill in the approach to the existing bridge over a small waterway. The rebar referenced in the 1994 tie card was found apparently undisturbed 2 inches below the surface of the gravel road. The position of the rebar fits well with the relative positions of proximate corners and falls at the easterly extension of a tree line to the west. The rebar was accepted as providing the best available evidence of the corner. It was removed and replaced with a Harrison monument in the same position on October 17, 2019.



Kenneth E. Hedge
 Kenneth E. Hedge, County Surveyor

James S. Swift
 James S. Swift, IN LS 20200054
 December 18, 2019

Jefferson Township



SECTION CORNER RECORD

SW 150-1200

BOONE COUNTY SURVEYOR'S OFFICE

State Plane grid coordinates NAD83 (2011):

North: 1737439.44 East: 3061313.49 (U.S. survey feet)

North: 1737334.50 East: 3061314.54 (U.S. survey feet)

Corner 1: 5/8" diameter rebar with cap stamped 'Montgomery County Surveyor', 6" below surrounding ground

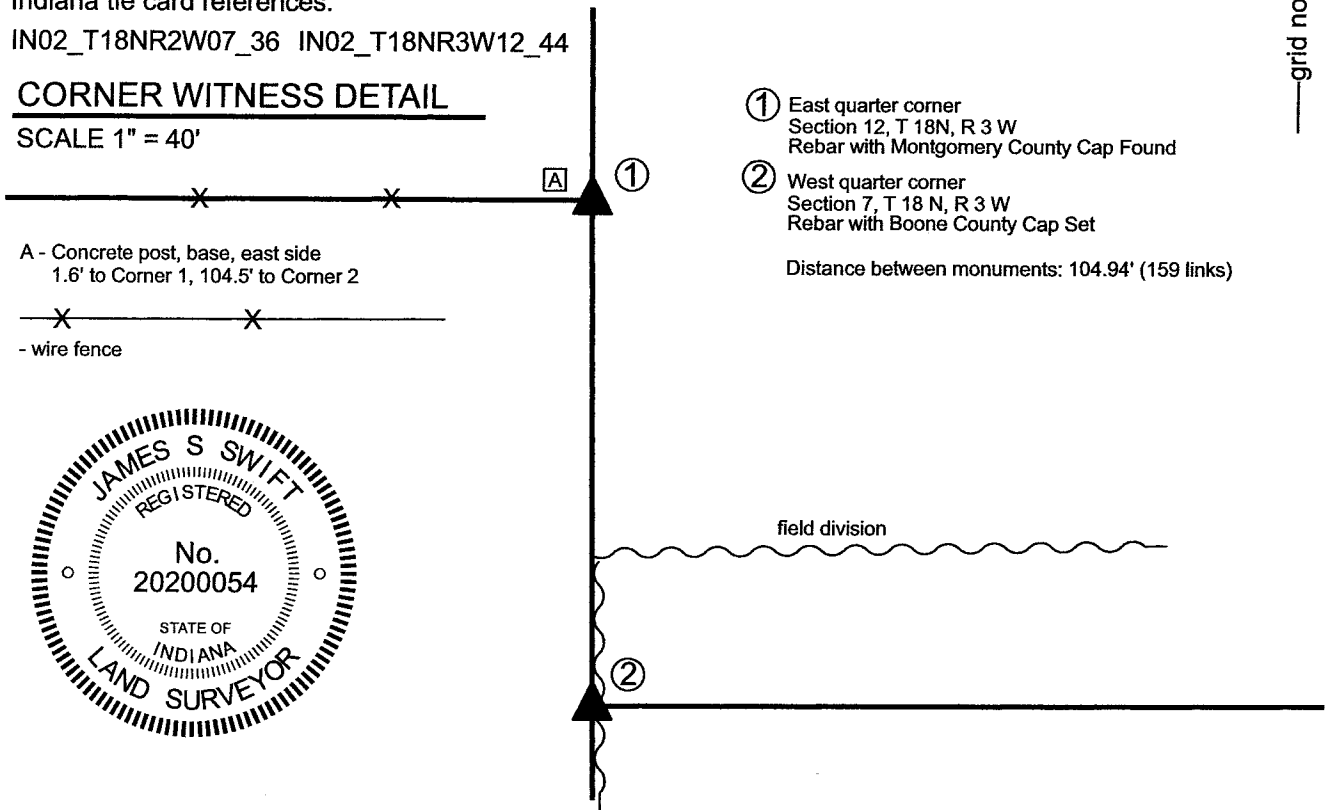
Corner 2: 5/8" diameter rebar, 24" long, with cap stamped 'Boone County Surveyor', 14" below surrounding ground

Indiana tie card references:

IN02_T18NR2W07_36 IN02_T18NR3W12_44

CORNER WITNESS DETAIL

SCALE 1" = 40'

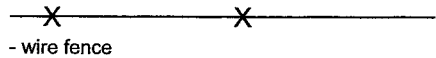


- ① East quarter corner
Section 12, T 18N, R 3 W
Rebar with Montgomery County Cap Found

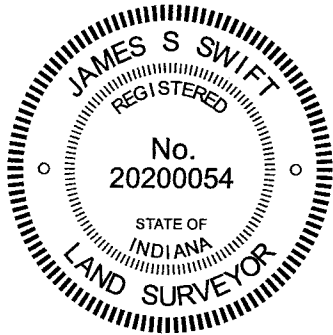
- ② West quarter corner
Section 7, T 18 N, R 3 W
Rebar with Boone County Cap Set

Distance between monuments: 104.94' (159 links)

A - Concrete post, base, east side
1.6' to Corner 1, 104.5' to Corner 2



- wire fence

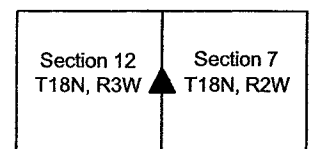


The rebar at Corner 2 was set a calculated position.

A BCS record of March 21, 1889 states, with respect to Corner 2, "Reestablished from stump of old bearing tree. Set two rocks. One 10.9.6 +. Top one 14.12.7 +." A BCS tie card dated June 27, 1994 shows Corner 2 as a buried metal fence post in a north-south fence, 104.94 feet south of a concrete post at the intersection of that fence with a fence to the west. A Section Corner Dossier dated March 9, 2017 provided by the Office of the Montgomery County Surveyor states that Corner 1, the Montgomery County corner, is a 5/8 inch diameter rebar with aluminum cap set in place of a stone found 0.6 feet below grade, slightly east of the concrete post at the easterly terminus of the fence to the west.

Corner 2 was excavated on December 22, 2020. Prior to excavation, the rebar called for in the Montgomery County dossier was found in good condition, six inches below grade. The position of Corner 2 was computed with respect to Corner 1 per the 1994 tie card and original federal notes. No physical evidence of Corner 2 was found. The fence shown on the 1994 tie card has been removed and no evidence of the metal post or any other part of the fence was found. Extensive manual probing in the vicinity of the computed position for the corner revealed several small rocks, none of which matched the dimensions of the rocks described in the 1889 record or otherwise appeared to represent evidence of the corner. The position of Corner 2 was established on the range line as defined by the Montgomery County rebar at Corner 1 and a similar monument at the southeast corner of section 12 at a distance of 104.94 feet, being the average of the range line offsets for the adjacent section corners to the north and south and matching the dimension shown on the 1994 tie card. A 24-inch length of 5/8-inch rebar with metal cap stamped 'Boone County Surveyor' was set at 14 inches deep in the tilled field at the computed position. Corner 1 was originally established in 1819. Corner 2 is not an original federal corner.

Walnut Township	Jefferson Township
Montgomery County	Boone County



Kenneth E. Hedge *James S. Swift*

Kenneth E. Hedge, County Surveyor James S. Swift, IN LS 20200054 January 6, 2021

SECTION CORNER RECORD

SW 200-1100

BOONE COUNTY SURVEYOR'S OFFICE

State Plane grid coordinates NAD83 (2011):

North: 1734691.23 East: 3066709.26 (U.S. survey feet)

Type of monument: Harrison, 4" disk 'Section Corner'

Depth: One inch below adjacent road surface

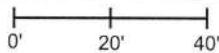
Indiana tie card references:

IN02_T18NR2W07_80 IN02_T18NR2W08_72

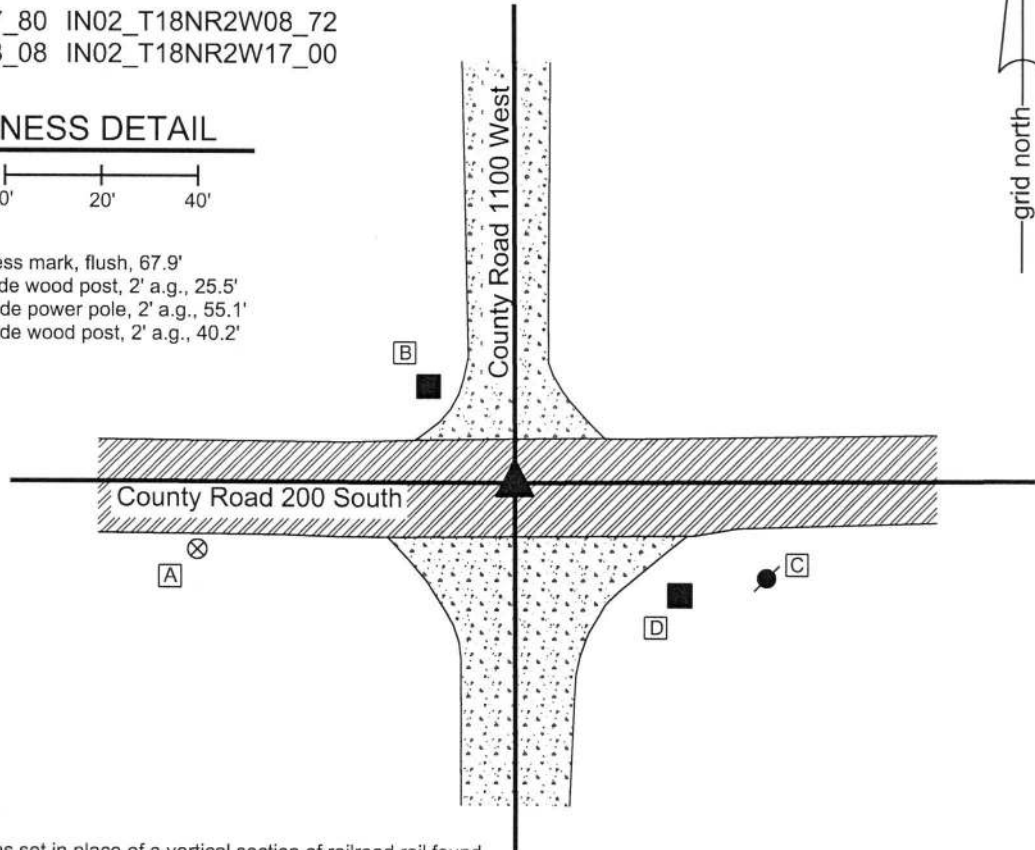
IN02_T18NR2W18_08 IN02_T18NR2W17_00

CORNER WITNESS DETAIL

SCALE 1" = 40'



- A - Boone County witness mark, flush, 67.9'
- B - Mag nail set in S. side wood post, 2' a.g., 25.5'
- C - Mag nail set in N. side power pole, 2' a.g., 55.1'
- D - Mag nail set in N. side wood post, 2' a.g., 40.2'



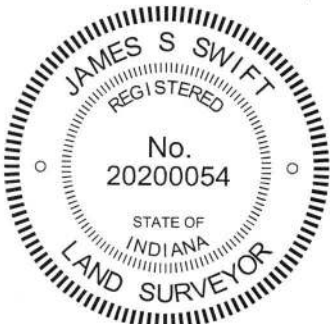
The Harrison Monument was set in place of a vertical section of railroad rail found.

No specific descriptions of this corner were found in the BCS Surveyor's Record beyond the original establishment of the corner as a wood post in 1820.

A BCS tie card dated August 23, 1967 shows the corner as "No stone." A BCS tie card dated May 19, 1994 shows the corner as a railroad spike. It is noted that the distance ties to corner posts in the northeast and northwest quadrants of the intersection do not match on the two tie cards.

This corner was excavated on October 9, 2018. Prior to excavation, a railroad spike was found at the surface of the road near the center of the intersection of the two roads. Prior to excavation, it appeared that the railroad spike was slightly southwest of the most probable location of the original corner, as determined by the centers of the roads in all four directions. The area of excavation was offset towards the northeast of the spike and was not centered on the spike for this reason.

Excavation revealed a vertical section railroad rail found at 8 inches deep 1.4 feet north and 1.7 feet east of the railroad spike. Further excavation of a rectangular area extending 2 feet south and 2 feet west of the railroad spike and 1.5 feet north and 1.5 feet east of the railroad rail revealed no further evidence of the corner. The bottom of the road bed was found at 10 inches deep. Excavation was performed to at least 12 inches deep. The vertical section of railroad rail is believed to have been set in association with the 1967 tie card, as it is known that setting railroad rails was the standard operating procedure of BCS field crews in the late 1960s and early 1970s. The variation in the positions of the spike and rail match the relative variations in the distance ties to the corner posts noted above. The rail was clearly in place before the spike was set and fits better with the evidence of the original corner in the form of the center of the roads. The rail was held as marking the corner. Both monuments were removed during excavation and a Harrison monument was set in the position of the rail.



Kenneth E. Hedge
 Kenneth E. Hedge, County Surveyor

Jefferson Township

James S. Swift
 James S. Swift, IN LS 20200054

Jackson Township

October 31, 2018

Section 7 T18N, R2W	Section 8 T18N, R2W
Section 18 T18N, R2W	Section 17 T18N, R2W

SECTION CORNER RECORD

BOONE COUNTY SURVEYOR'S OFFICE

SW 200-1150

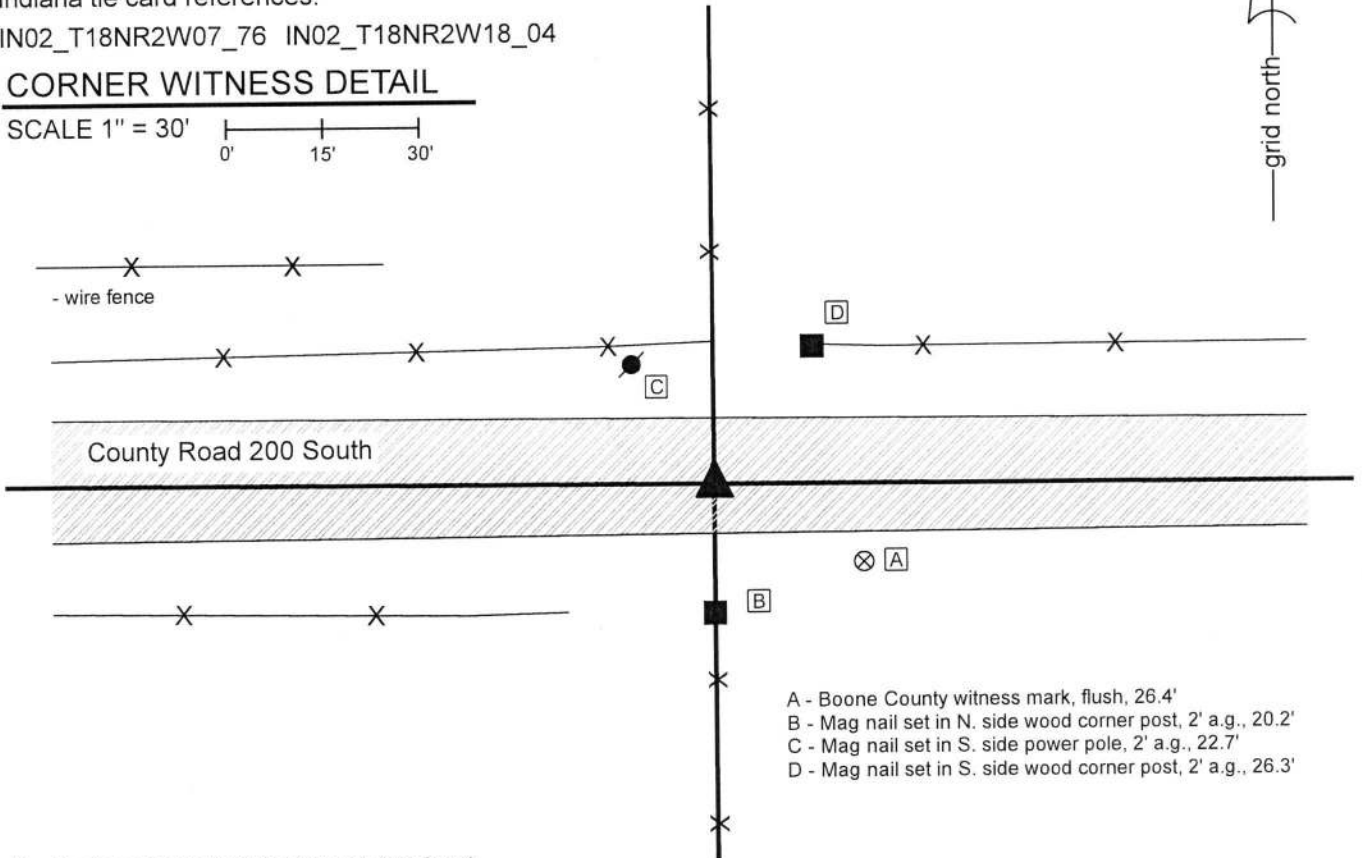
State Plane grid coordinates NAD83 (2011):
 North: 1734695.55 East: 3064068.12 (U.S. survey feet)

Type of monument: Harrison, 4" disk 'Section Corner'
 Depth: One inch below adjacent road surface

Indiana tie card references:
 IN02_T18NR2W07_76 IN02_T18NR2W18_04

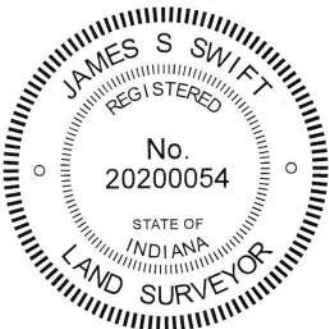
CORNER WITNESS DETAIL

SCALE 1" = 30'



- A - Boone County witness mark, flush, 26.4'
- B - Mag nail set in N. side wood corner post, 2' a.g., 20.2'
- C - Mag nail set in S. side power pole, 2' a.g., 22.7'
- D - Mag nail set in S. side wood corner post, 2' a.g., 26.3'

The Harrison monument was set over a stone found.
 No specific descriptions of this corner were found in the BCS Surveyor's Record beyond the original establishment of the corner as a wood post in 1820. The corner is referenced as the terminal point for measurements in an entry of 1844, indicating that some monument was present from which to measure at that time. A BCS tie card dated May 19, 1994 shows the corner as a rebar in the center of the east-west county road, in-line with fences to the north and south.
 Excavation was performed as this corner on October 17, 2019. Prior to excavation, a 5/8 inch rebar was found at the surface of the road in agreement with the 1994 distance ties. Excavation revealed a stone found at 17 inches deep, slightly east of the rebar. The stone was found to be 10 inches N-S by 6 inches E-W by 10 inches tall, as measured on the north edge. The stone was oriented in cardinal directions and embedded in the clay layer below the road, with the top of the stone coincident with the bottom of the road bed. No specific marks were observed on the stone. The character of the stone, being generally horizontal, oriented in cardinal directions but not bearing any chiseled marks, matches the character of stones found at other corners for which the records are similar, with early measurement references but no specific description of the monument.
 The stone was accepted as the best available evidence of the corner and a Harrison monument was set over the top, center of the stone. The rebar, removed during excavation, had been near the northwest corner of the stone, 0.2 foot north and 0.6 foot west of the point held as the corner.



Kenneth E. Hedge
 Kenneth E. Hedge, County Surveyor

James S. Swift
 James S. Swift, IN LS 20200054
 December 11, 2019

Jefferson
 Township

Section 7
 T18N, R2W

Jackson
 Township

Section 18
 T18N, R2W

SECTION CORNER RECORD

SW 200-1200

BOONE COUNTY SURVEYOR'S OFFICE

State Plane grid coordinates NAD83 (2011):

Corner 1: North: 1734781.17 East: 3061339.97 (U.S. survey feet)
 Corner 2: North: 1734696.70 East: 3061340.70 (U.S. survey feet)

Corner 1: 5/8 inch diameter rebar with aluminum cap stamped 'Montgomery County Surveyor' 1 inch deep

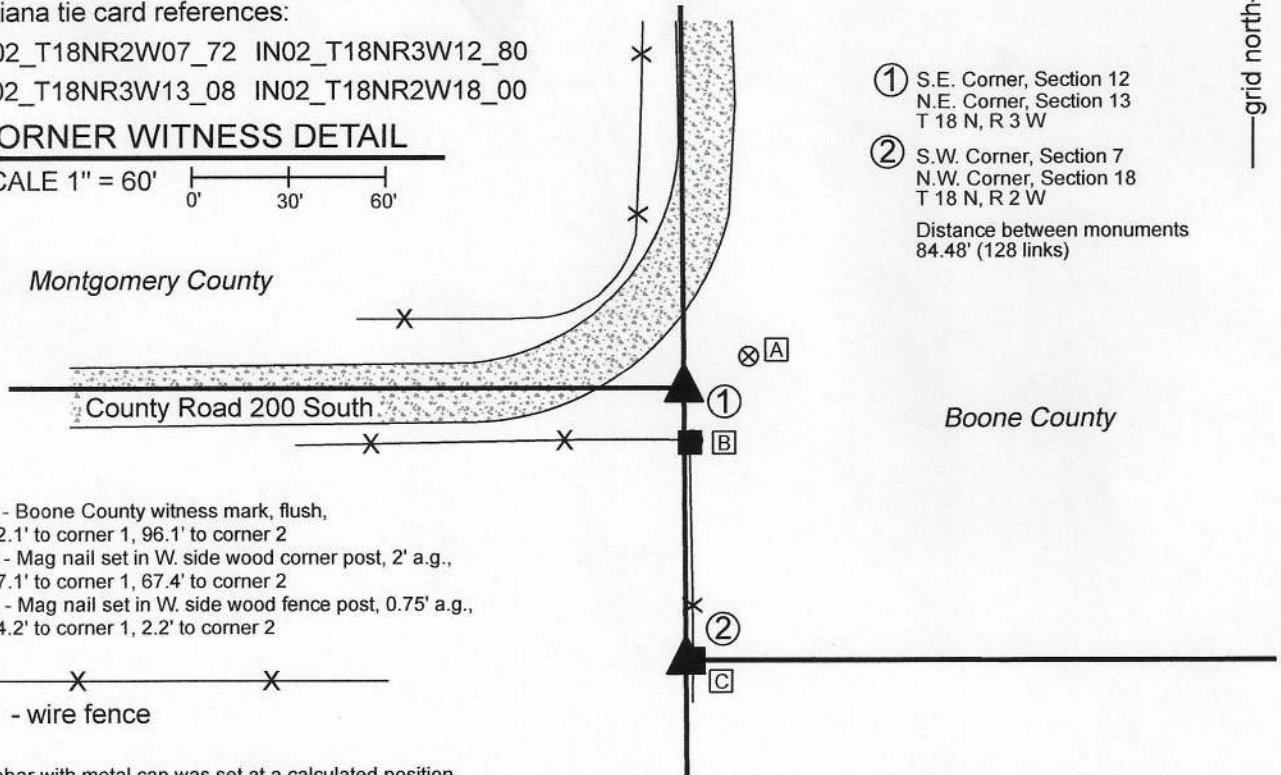
Corner 2: 5/8 inch diameter rebar with aluminum cap stamped 'Boone County Surveyor' 24 inches long, 14 inches deep.

Indiana tie card references:

IN02_T18NR2W07_72 IN02_T18NR3W12_80
 IN02_T18NR3W13_08 IN02_T18NR2W18_00

CORNER WITNESS DETAIL

SCALE 1" = 60'



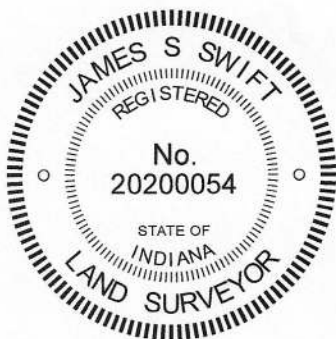
- ① S.E. Corner, Section 12
N.E. Corner, Section 13
T 18 N, R 3 W
 - ② S.W. Corner, Section 7
N.W. Corner, Section 18
T 18 N, R 2 W
- Distance between monuments
84.48' (128 links)

- A - Boone County witness mark, flush,
22.1' to corner 1, 96.1' to corner 2
- B - Mag nail set in W. side wood corner post, 2' a.g.,
17.1' to corner 1, 67.4' to corner 2
- C - Mag nail set in W. side wood fence post, 0.75' a.g.,
84.2' to corner 1, 2.2' to corner 2

- wire fence

The rebar with metal cap was set at a calculated position.

No specific descriptions of this corner were found in the BCS Surveyor's Record beyond the original establishment of the corner 128 links south of the standard corner un 1820. No recent BCS tie cards were found referencing the corner. A Section Corner Dossier provided by the Office of the Montgomery County Surveyor dated August 16, 2017 shows the standard corner as being set with respect to information and distances shown in Montgomery County records from 1898 and 1899. The rebar set by Montgomery County was found in good condition, per the dossier. The rebar is approximately 2 feet west of the existing fence which bears south from slightly south of the Montgomery County corner. The dossier indicates that distances referenced in the 1898 and 1899 record were held over the physical fence, and notes that the position of the corner is in substantial agreement with the fence. The range line, as defined by the Montgomery County rebar at the standard corner and a concrete post at the east quarter corner of section 13, T18N, R3W, was held. Manual excavation and probing in the vicinity of the Boone County corner did not reveal further evidence of the corner. The specific position of the corner was established at the record federal closing distance of 128 links south of the standard corner. This position falls approximately 2 feet west of the existing fence and falls far enough into the tilled field to require the monument to be buried to avoid disruption by agricultural practices. A 24 inch length of 5/8 inch rebar with metal cap was set at 14 inches deep at this computed position, 2.2 feet west of a wood line post, on November 6, 2020. It is noted that this position fits reasonably well with the westerly prolongation of County Road 200 South in Boone County.



Kenneth E. Hedge
 Kenneth E. Hedge, County Surveyor

James S. Swift
 James S. Swift, IN LS 20200054
 November 18, 2020

Walnut
 Township
 Montgomery
 County

Section 12 T18N, R3W	Section 7 T18N, R2W
Section 13 T18N, R3W	Section 18 T18N, R2W

Jefferson
 Township
 Boone
 County

Jackson
 Township
 Boone
 County