

SECTION CORNER RECORD

SW 100-500

BOONE COUNTY SURVEYOR'S OFFICE

State Plane grid coordinates NAD83 (2011):

North: 1740064.84 East: 3098296.54 (U.S. survey feet)

Type of monument: Harrison, 4" disk 'Section Corner'

Depth: One inch below adjacent road surface

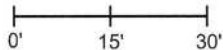
Indiana tie card references:

IN02_T18NR1W06_80 IN02_T18NR1W05_72

IN02_T18NR1W07_08 IN02_T18NR1W08_00

CORNER WITNESS DETAIL

SCALE 1" = 30'



A - Mag nail set in S.E. side power pole, 2' a.g., 37.5'

B - Boone County witness mark, flush, 19.1'

C - Boone County witness mark, flush, 23.4'

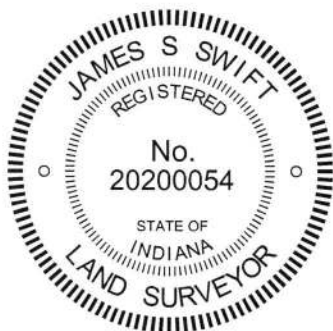
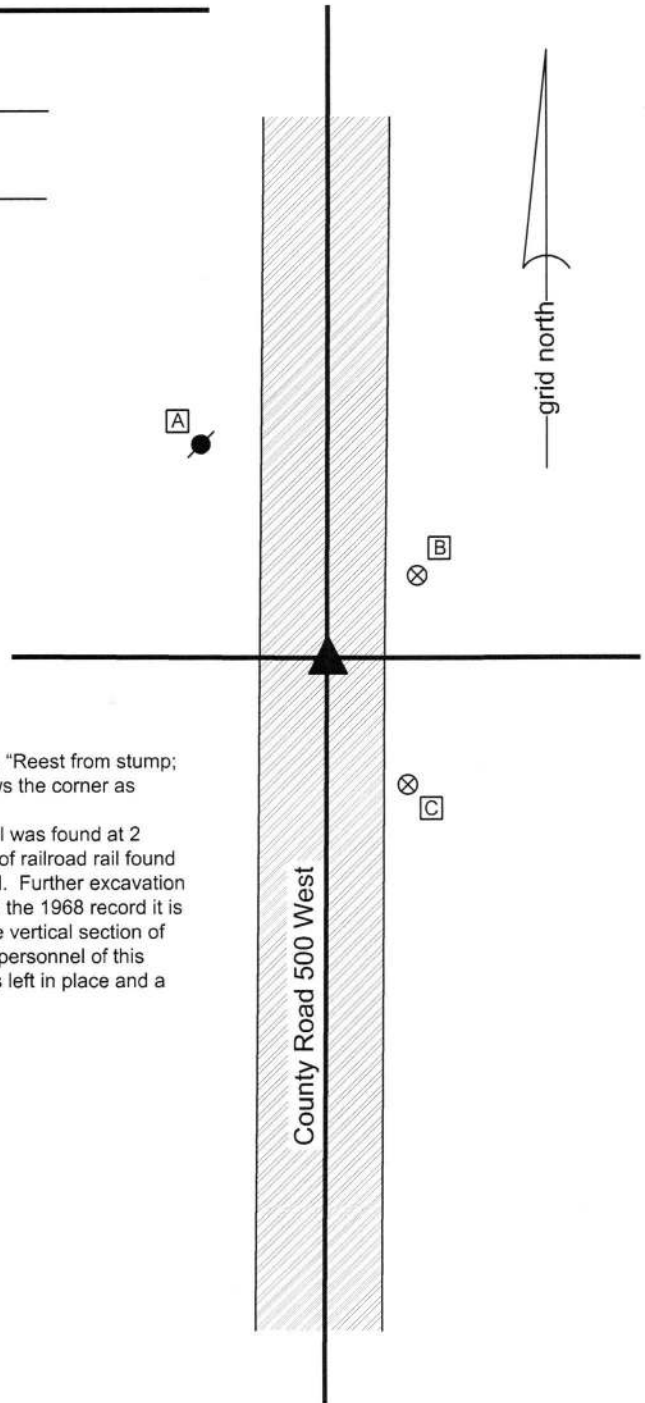
Boone County witness mark is a 3/8" diameter x 2' long rebar bearing a metal cap stamped "Boone County Witness Point."

The Harrison monument was over a vertical section of railroad rail found.

A BCS tie card dated December 16, 1870 states, with respect to this corner, "Reest from stump; of Sugar. Rock 17, 10, 2 1/2 +." A BCS tie card dated August 13, 1968 shows the corner as "Stone Located."

This corner was excavated on July 20, 2016. Prior to excavation, a Mag nail was found at 2 inches deep in a hole in the asphalt. Excavation revealed a vertical section of railroad rail found at 12 inches deep, generally below though slightly southwest of the Mag nail. Further excavation revealed no further evidence of the corner. Though not specifically stated in the 1968 record it is believed most likely that the found stone was removed and replaced with the vertical section of railroad rail at that time. This is known to have been a common practice by personnel of this office during that era. The rail was held as marking the corner. The rail was left in place and a Harrison monument was set over the top of the rail.

This corner was originally established as a wood post in 1820.



Kenneth E. Hedge
Kenneth E. Hedge, County Surveyor

James S. Swift
James S. Swift, IN LS 20200054
March 23, 2017

Jefferson Township

Section 6 T18N, R1W	Section 5 T18N, R1W
Section 7 T18N, R1W	Section 8 T18N, R1W

SECTION CORNER RECORD

SW 100-550

BOONE COUNTY SURVEYOR'S OFFICE

State Plane grid coordinates NAD83 (2011):

North: 3095664.07 East: 1740083.23 (U.S. survey feet)

Type of monument: 24" length of 5/8-inch diameter rebar with aluminum cap stamped 'Boone County Surveyor'

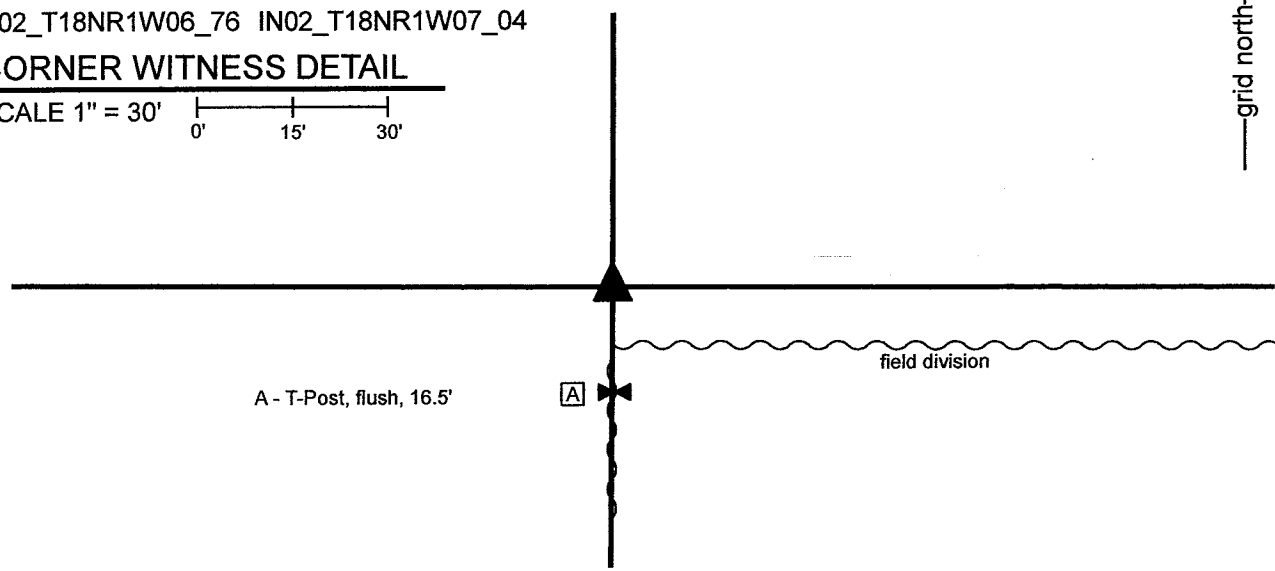
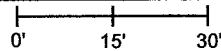
Depth: Fourteen inches below surrounding ground

Indiana tie card references:

IN02_T18NR1W06_76 IN02_T18NR1W07_04

CORNER WITNESS DETAIL

SCALE 1" = 30'



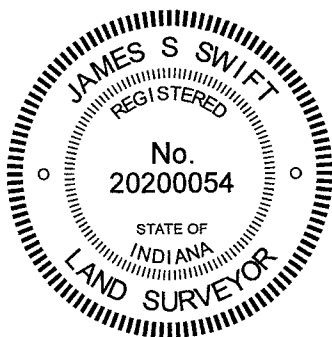
The rebar with Boone County Surveyor cap was set in a computed position.

A BCS Record dated May 11, 1872 states, with respect to this corner, "Reest from N. W. Ash stump. Rock 16,11,9 +."

No recent BCS tie cards were found referencing this corner, nor were any surveys recorded in the Office of the Boone County Recorder found referencing the corner.

Substantial investigation of this corner and relevant evidence was performed on November 16 and 17, 2021. The corner falls in a tilled field and the only visible evidence of the corner in the immediate vicinity is a steel t-post in-line with a field division to the south and east. A rebar with cap 'Dodge S0288' was found marking the terminus of an east-west fence at a point 783 feet east of the northwest corner of Section 7. Adjacent to this post is a rebar with a metal cap stamped 'Carl Anderson ENGR.' It was observed that a position computed for the corner being at the double-distance prolongation of a line connecting the Harrison monument at the northeast corner of Section 7 (see BCS Corner SW 100-500) and the Dodge rebar fit remarkably in the east-west dimension with the aforementioned t-post and field division to the south. It was also observed that the previously noted wood corner post and Carl Anderson rebar fell on the line connecting this computed position and the northwest corner of Section 7 (see BCS Corner SW 100-600 CLS). The computed position fell approximately 1 rod (16.5 feet) north of the t-post and east-west field division and fell in-line with the north-south field division. Extensive probing and manual excavation in the vicinity of the computed position and t-post revealed no further evidence of the corner. The computed position based on the northeast corner of Section 7 and Dodge rebar was held. The t-post is clearly south of the more reliable evidence of the Dodge rebar, Anderson rebar and east-west fence along the westerly part of the north line of the northwest quarter of Section 7. A rebar with metal cap stamped 'Boone County Surveyor' was set 14 inches deep in the tilled field on November 23, 2021.

This corner was originally established as a wood post in 1820.



Kenneth E. Hedge, County Surveyor

James S. Swift, IN LS 20200054
December 1, 2021

Jefferson Township

Section 6
T18N, R1W

Section 7
T18N, R1W

SECTION CORNER RECORD

SW 100-600

BOONE COUNTY SURVEYOR'S OFFICE

State Plane grid coordinates NAD83 (2011):

Corner 1: North: 1740160.94 East: 3093174.78 (U.S. survey feet)

Corner 2: North: 1740095.77 East: 3093175.28 (U.S. survey feet)

Type of monument: Harrison, 4" disk 'Section Corner'

Depth: Six inches below adjacent gravel road surface

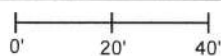
Indiana tie card references:

IN02_T18NR2W01_80 IN02_T18NR1W06_72

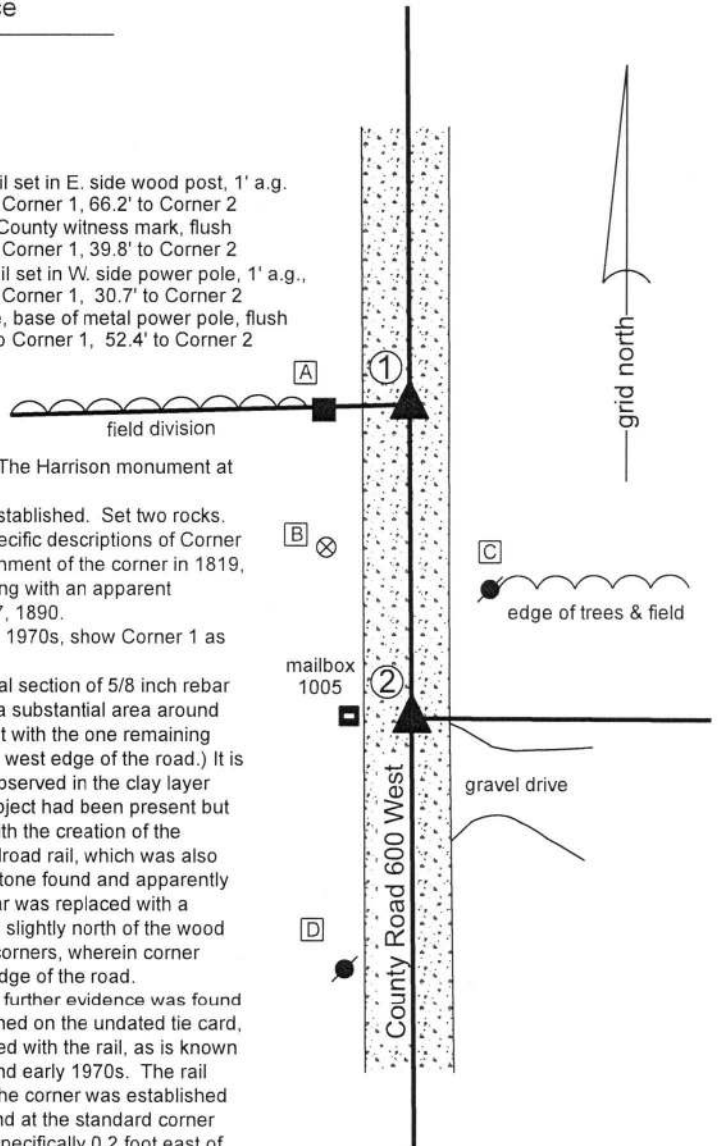
IN02_T18NR2W12_08 IN02_T18NR1W07_00

CORNER WITNESS DETAIL

SCALE 1" = 40'



- A - Mag nail set in E. side wood post, 1' a.g., 18.0' to Corner 1, 66.2' to Corner 2
- B - Boone County witness mark, flush 34.3' to Corner 1, 39.8' to Corner 2
- C - Mag nail set in W. side power pole, 1' a.g., 41.2' to Corner 1, 30.7' to Corner 2
- D - N. edge, base of metal power pole, flush 116.4' to Corner 1, 52.4' to Corner 2



① S.E. Corner, Section 1
N.E. Corner, Section 12
T 18 N, R 2 W

② S.W. Corner, Section 6
N.W. Corner, Section 7
T 18 N, R 1 W

The Harrison monument at Corner 1 was set in place of a rebar found. The Harrison monument at Corner 2 was set in place of a vertical section of railroad rail found.

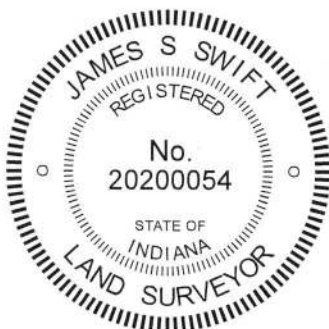
A BCS record of October 9, 1887 states, with respect to Corner 2, "Reestablished. Set two rocks. One 10.8.7 +. Top one 12.11.7 +. Two small rocks under both." No specific descriptions of Corner 1 were found in the BCS Surveyor's Record beyond the original establishment of the corner in 1819, though the corner is mentioned as a terminal point for measurement along with an apparent reference to location of the range line in a record on April 18 and May 17, 1890.

BCS tie cards with no date, believed to date from the late 1960s or early 1970s, show Corner 1 as "Stone Located" and Corner 2 as "Found Stones No Measurements."

Corner 1 was excavated on June 26, 2018. Prior to excavation, a vertical section of 5/8 inch rebar was found marking the apparent location of the corner. Excavation of a substantial area around the rebar did not reveal further hard evidence of the corner. The rebar fit with the one remaining distance tie shown on the undated tie card (18' to the corner post on the west edge of the road.) It is noted that apparent disruption in the form of sand amidst the clay was observed in the clay layer below the road bed immediately below the rebar, indicating that some object had been present but removed. It is believed most likely that the stone found in association with the creation of the undated tie card was removed and replaced with a vertical section of railroad rail, which was also later removed. The rebar was accepted as marking the position of the stone found and apparently removed by the BCS crew which created the undated tie card. The rebar was replaced with a Harrison monument in the same position. It is noted that the corner falls slightly north of the wood post on the west edge of the road, which fits with observations at other corners, wherein corner stones are found slightly to one side or another of the old posts on the edge of the road.

Minor excavation was performed around Corner 2 on June 27, 2018. No further evidence was found beyond the vertical section of railroad rail. Though the rail is not mentioned on the undated tie card, it is believed most likely that the found stones were removed and replaced with the rail, as is known to have been a procedure followed by BCS crews from the late 1960s and early 1970s. The rail was accepted as marking the position of the stones previously found. The corner was established on the range line as defined by the position of Corner 1 and a stone found at the standard corner one-half mile south. A Harrison Monument was set in place of the rail, specifically 0.2 foot east of the center of mass of the top of the rail.

Corner 1 was established in 1819. Corner 2 was established in 1820, 97 links (64 feet) south of Corner 1.



Kenneth E. Hedge
Kenneth E. Hedge, County Surveyor

James S. Swift
James S. Swift, IN LS 20200054
July 25, 2018

Jefferson Township

Section 1 T18N, R2W	Section 6 T18N, R1W
Section 12 T18N, R2W	Section 7 T18N, R1W

SECTION CORNER RECORD

SW 150-600

BOONE COUNTY SURVEYOR'S OFFICE

State Plane grid coordinates NAD83 (2011):

Corner 1: North: 1737513.35 East: 3093195.12 (U.S. survey feet)

Corner 2: North: 1737448.01 East: 3093195.62 (U.S. survey feet)

Type of monument: Harrison, 4" disk 'Section Corner'

Depth: Six inches below adjacent gravel road surface

Indiana tie card references:

IN02_T18NR2W12_44 IN02_T18NR1W07_36

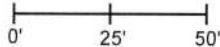
- ① East Quarter Corner
Section 12
T 18 N, R 2 W
- ② West Quarter Corner
Section 7
T 18 N, R 1 W

Distance between monuments:
65.34' (99 links)

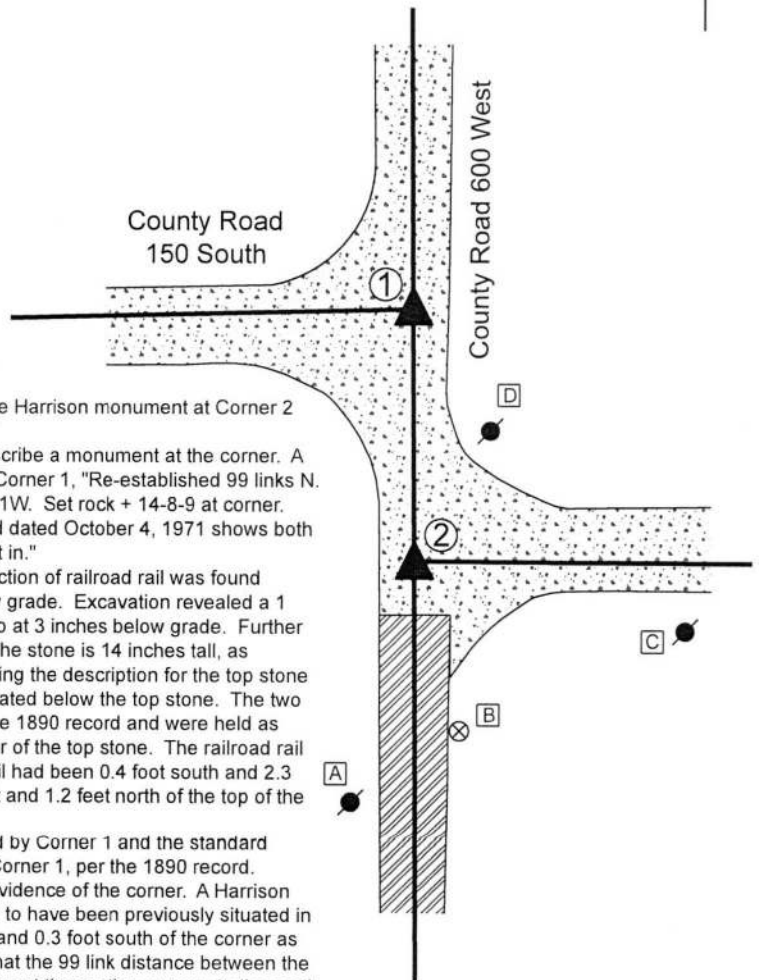


CORNER WITNESS DETAIL

SCALE 1" = 50'



- A - East edge, base, metal power pole, 1.3' a.g.
128.5' to Corner 1, 64.1 feet to Corner 2
- B - Boone County witness mark, flush
110.0' to Corner 1, 45.5' to Corner 2
- C - Mag nail set in N. side power pole, 2' a.g., xxxx'
108.5' to Corner 1, 73.2' to Corner 2
- D - Mag nail set in W. edge power pole, 2' a.g.
36.3' to Corner 1, 38.3 feet to Corner 2



The Harrison monument at Corner 1 was set over a stone found. The Harrison monument at Corner 2 was set in a calculated position 99 links south of Corner 1. A BCS record dated April 22, 1851 shows Corner 2 but does not describe a monument at the corner. A BCS record dated April 19 and May 17, 1890 states, with respect to Corner 1, "Re-established 99 links N. of intersection of Range line with line from East through sect. 7-18N-1W. Set rock + 14-8-9 at corner. Set rock + 9-7-6 under. Several small rocks around." A BCS tie card dated October 4, 1971 shows both corners set 66.6 feet apart (101 links) and states "no stone - RRR put in."

Corner 1 was excavated on June 27, 2018. Prior to excavation, a section of railroad rail was found leaning slightly toward the north, the top of which was 3 inches below grade. Excavation revealed a 1 inch diameter iron pin, 15 inches long, found northeast of the rail, also at 3 inches below grade. Further excavation revealed a stone found to the east of both monuments. The stone is 14 inches tall, as measured on the west side, by 9 inches N-S by 8 inches E-W, matching the description for the top stone in the 1890 BCS record. Probing indicated that another stone is situated below the top stone. The two stones were accepted as being the same monuments described in the 1890 record and were held as marking Corner 1. A Harrison monument was set over the top, center of the top stone. The railroad rail and iron pin were both removed during excavation. The top of the rail had been 0.4 foot south and 2.3 feet west of the top of the stone. The iron pin had been 1.1 foot west and 1.2 feet north of the top of the stone.

The position of Corner 2 was established on the range line as defined by Corner 1 and the standard corner 1/2 mile south (see Corner SW 200-600) at 99 links south of Corner 1, per the 1890 record. Excavation in this vicinity on August 28, 2018 did not reveal further evidence of the corner. A Harrison monument was set at the calculated position. A railroad spike known to have been previously situated in this vicinity, but not found during excavation, had been 2.4 feet west and 0.3 foot south of the corner as established on the range line 99 links south of Corner 1. It is noted that the 99 link distance between the corners represents the average of the original federal closing distances at the section corners to the north and south. It is not clear why the 1971 tie card established the corners at 101 links, which is equal to the original published closing distance at the corner to the south (SW 200-600).

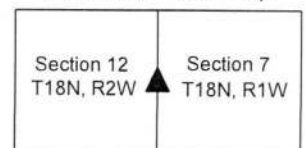
Corner 1 was originally established as a wood post. Corner 2 is not an original federal corner.



Kenneth E. Hedge
Kenneth E. Hedge, County Surveyor

James S. Swift
James S. Swift, IN LS 20200054
September 5, 2018

Jefferson Township



SECTION CORNER RECORD

SW 200-500

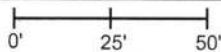
BOONE COUNTY SURVEYOR'S OFFICE

State Plane grid coordinates NAD83 (2011):
North: 1734788.82 East: 3098304.45 (U.S. survey feet)

Type of monument: Harrison, 4" disk 'Section Corner'
Depth: One inch below adjacent road surface

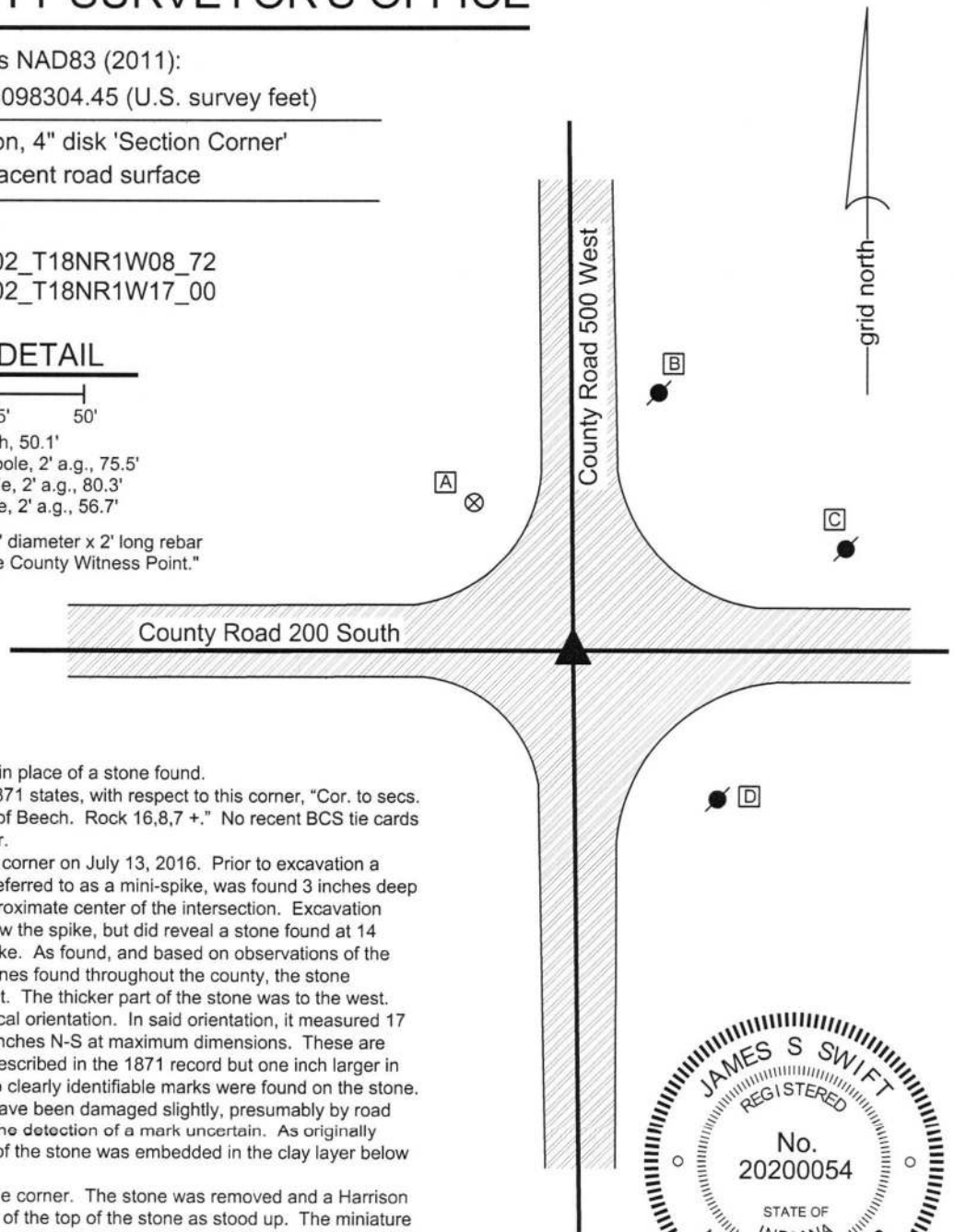
Indiana tie card references:
IN02_T18NR1W07_80 IN02_T18NR1W08_72
IN02_T18NR1W18_08 IN02_T18NR1W17_00

CORNER WITNESS DETAIL

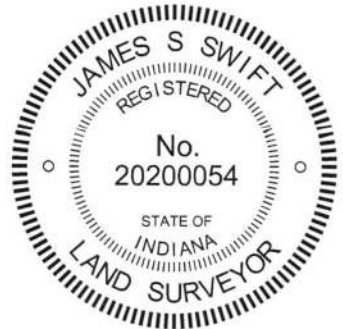
SCALE 1" = 50' 

- A - Boone County witness mark, flush, 50.1'
- B - Mag nail set in S.W. side power pole, 2' a.g., 75.5'
- C - Mag nail set in W. side power pole, 2' a.g., 80.3'
- D - Mag nail set in N. side power pole, 2' a.g., 56.7'

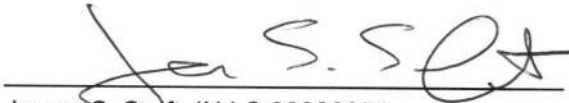
Boone County witness mark is a 3/8" diameter x 2' long rebar bearing a metal cap stamped "Boone County Witness Point."



The Harrison monument was set in place of a stone found.
A BCS record dated March 27, 1871 states, with respect to this corner, "Cor. to secs. 7,8,17 and 18. Reest from roots of Beech. Rock 16,8,7 +." No recent BCS tie cards were found referencing the corner.
Excavation was performed at this corner on July 13, 2016. Prior to excavation a small railroad spike, sometimes referred to as a mini-spike, was found 3 inches deep in a hole in the asphalt at the approximate center of the intersection. Excavation revealed no further evidence below the spike, but did reveal a stone found at 14 inches deep, southwest of the spike. As found, and based on observations of the characteristics of other corner stones found throughout the county, the stone appeared to be leaning to the east. The thicker part of the stone was to the west. The stone was stood up in a vertical orientation. In said orientation, it measured 17 inches tall by 9 inches E-W by 8 inches N-S at maximum dimensions. These are similar proportions as the stone described in the 1871 record but one inch larger in the E-W and N-S dimensions. No clearly identifiable marks were found on the stone. The top of the rock appeared to have been damaged slightly, presumably by road grading equipment, which made the detection of a mark uncertain. As originally found, approximately 70 percent of the stone was embedded in the clay layer below the road.
The stone was held as marking the corner. The stone was removed and a Harrison monument was set in the position of the top of the stone as stood up. The miniature railroad spike, removed during excavation, had been 1.8 feet north and 0.8 foot east of the point held as the corner.
This corner was originally established as a wood post in 1820.




Kenneth E. Hedge, County Surveyor


James S. Swift, IN LS 20200054
March 23, 2017

Jefferson Township	Section 7 T18N, R1W	Section 8 T18N, R1W
Jackson Township	Section 18 T18N, R1W	Section 17 T18N, R1W

PHOTOGRAPHIC DOCUMENTATION

Date of photography: July 13, 2016

The stone as it was originally exposed.



The stone fully exposed and stood vertical.



View from the south looking across the stone and north along County Road 500 West.



View from the east looking across the stone and west along County Road 200 South.



For details and documentation, refer to related sheet "Section Corner Record."

SECTION CORNER RECORD

SW 200-600

BOONE COUNTY SURVEYOR'S OFFICE

- ① S.E. Corner, Section 12
N.E. Corner, Section 13
T 18 N, R 2 W
- ② S.W. Corner, Section 7
N.W. Corner, Section 18
T 18 N, R 1 W

Distance between monuments: 66.9'
Original federal closing distance:
101 links (66.6')

State Plane grid coordinates NAD83 (2011):

Corner 1: North: 1734791.95 East: 3093215.64 (U.S. survey feet)

Corner 2: North: 1734858.83 East: 3093215.14 (U.S. survey feet)

Type of monument: Harrison, 4" disk 'Section Corner'

Depth: One inch deep (Corner 1) six inches deep (Corner 2)

Indiana tie card references:

IN02_T18NR2W12_80 IN02_T18NR1W07_72

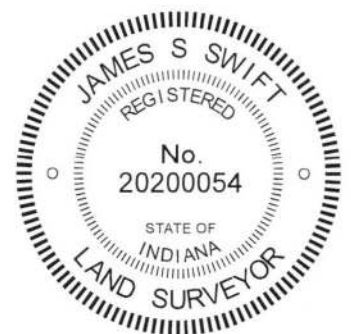
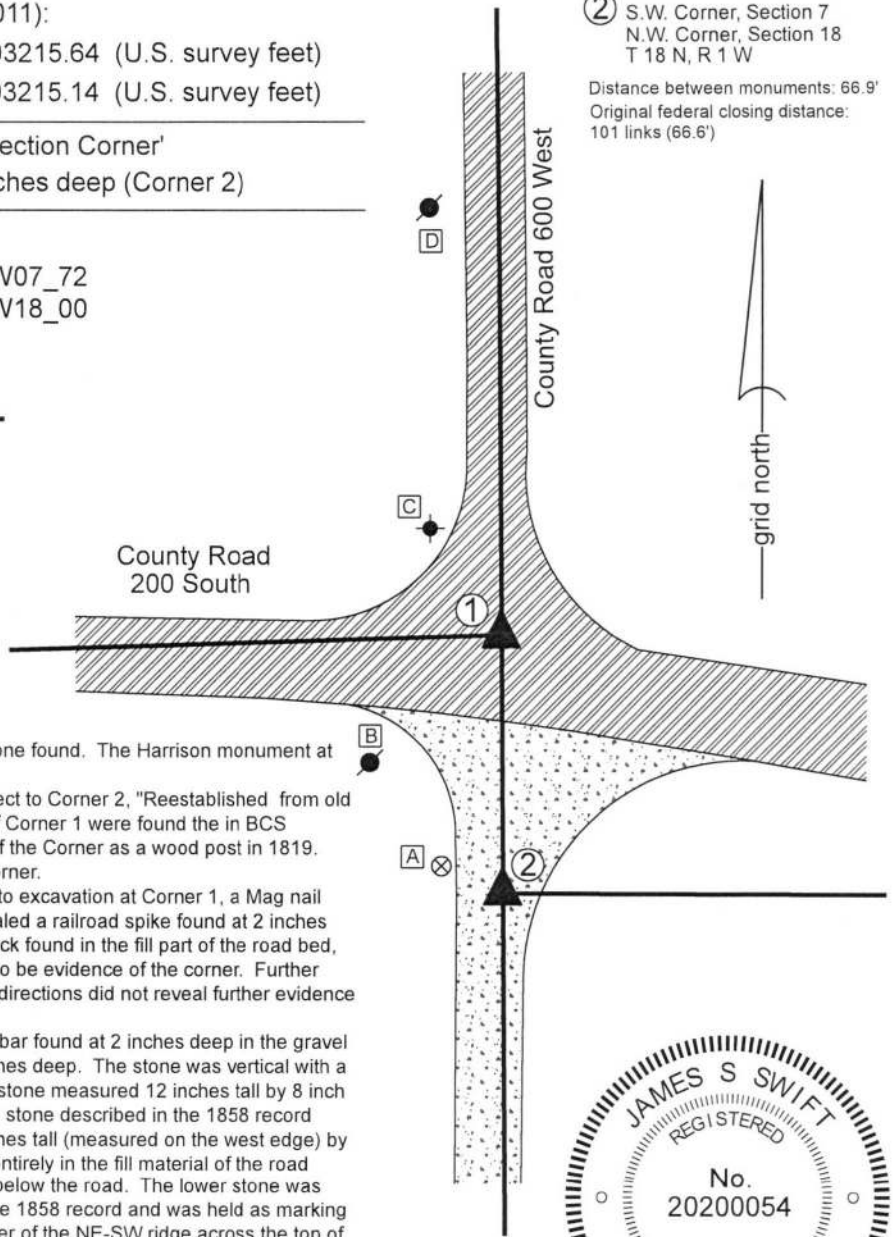
IN02_T18NR2W13_08 IN02_T18NR1W18_00

CORNER WITNESS DETAIL

SCALE 1" = 50'

- A - Boone County witness mark, flush
61.9' to Corner 1, 17.5' to Corner 2
- B - Mag nail set in E. side power pole, 2' a.g.
45.9' to Corner 1, 47.3' to Corner 2
- C - East edge, stop sign post, 2' a.g.
32.4' to Corner 1, 96.0' to Corner 2
- D - Mag nail set in S.E. side power pole, 2' a.g.
111.2' to Corner 1, 117.7' to Corner 2

The Harrison monument at Corner 2 was set over a stone found. The Harrison monument at Corner 1 was set at a calculated position. A BCS record of October 15-16, 1858 states with respect to Corner 2, "Reestablished from old witness tree. Rock 13x17." No specific descriptions of Corner 1 were found in the BCS Surveyor's Record beyond the original establishment of the Corner as a wood post in 1819. No recent BCS tie cards were found referencing this corner. Both corners were excavated on June 28, 2018. Prior to excavation at Corner 1, a Mag nail was found at the surface of the road. Excavation revealed a railroad spike found at 2 inches deep, 0.1 foot east and 0.05 foot north of the nail. A rock found in the fill part of the road bed, slightly northwest of the railroad spike, did not appear to be evidence of the corner. Further excavation of an area extending 2.5 feet in all cardinal directions did not reveal further evidence of the corner. Excavation at Corner 2 began at a 1/2 inch diameter rebar found at 2 inches deep in the gravel roadway. Excavation revealed a stone found at 14 inches deep. The stone was vertical with a distinct high point, oriented in cardinal directions. The stone measured 12 inches tall by 8 inch N-S by 3 inches E-W. The stone was removed and the stone described in the 1858 record was found directly below. This stone measured 17 inches tall (measured on the west edge) by 13 inches NE-SW. The upper stone was found to be entirely in the fill material of the road while the lower stone was embedded in the clay layer below the road. The lower stone was accepted as being the same monument described in the 1858 record and was held as marking Corner 2. A Harrison monument was set over the center of the NE-SW ridge across the top of the rock. The 1/2 inch rebar, removed during excavation, had been 1.9 feet west and 0.9 foot north of the point held as the corner. The position of Corner 1 was established at the intersection of a line extended from the standard corner 1/2 mile south (see Corner SW 250-600) through the Harrison monument set at Corner 2 and a line extended from the corner 1/2 mile west (see Corner SW 200-650) through the found railroad spike near Corner 1. A Harrison monument was set at this point of intersection on September 4, 2018. The railroad spike, removed during excavation, had been 1.9 feet westerly of this position. It is noted that the closing distance reported in the original federal notes for these corners is 101 links (66.6 feet) and that the two corners were set at 66.9 feet. Corner 1 was originally established as a wood post in 1819. Corner 2 was established as a wood post in 1820.



Jefferson
Township

Section 12 T18N, R2W	Section 7 T18N, R1W
Section 13 T18N, R2W	Section 18 T19N, R1W

Jackson
Township

James S. Swift
James S. Swift, IN LS 20200054

Kenneth E. Hedge
Kenneth E. Hedge, County Surveyor

September 5, 2018