

# SECTION CORNER RECORD

NW 500-1200

## BOONE COUNTY SURVEYOR'S OFFICE

State Plane grid coordinates NAD83 (2011):

North: 1772076.16 East: 3061159.70 (U.S. survey feet)

Type of monument: Harrison, 4" disk 'Section Corner'

Depth: Six inches below adjacent road surface

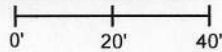
Indiana tie card references:

IN02\_T19NR3W01\_80 IN02\_T19NR2W06\_72

IN02\_T19NR3W12\_08 IN02\_T19NR2W07\_00

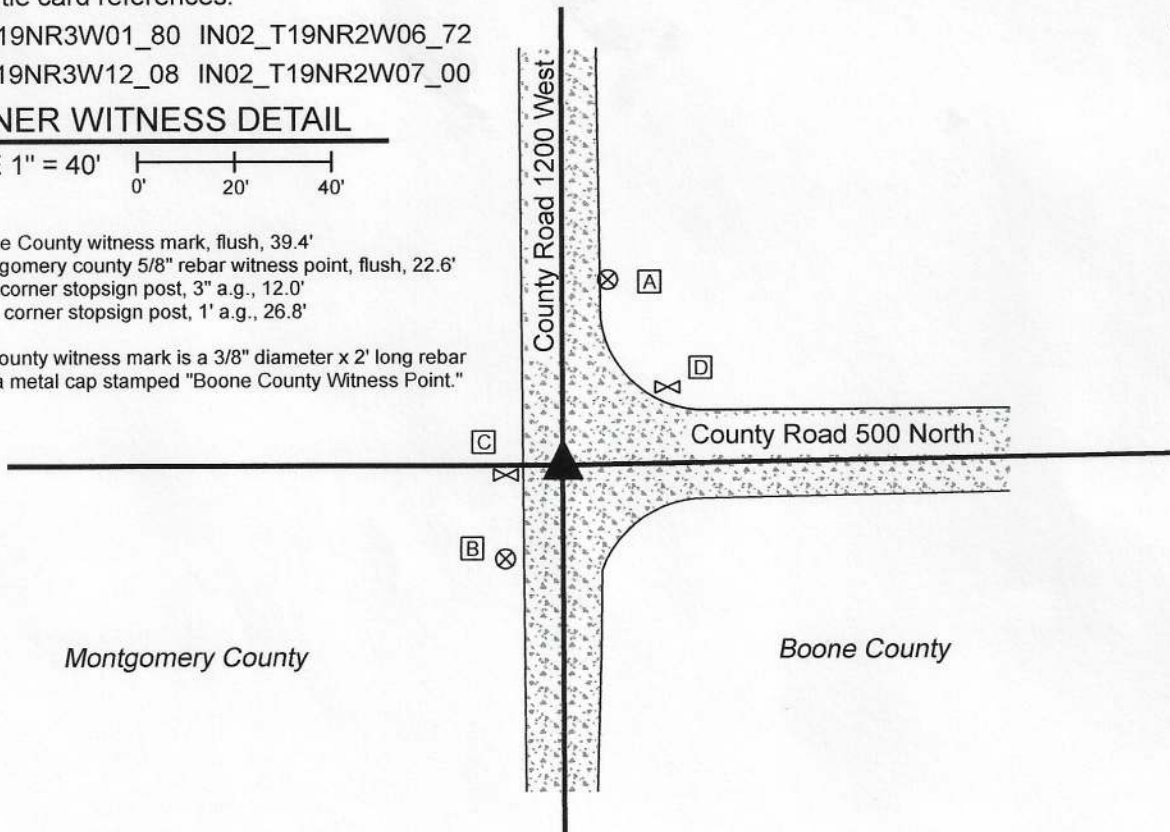
### CORNER WITNESS DETAIL

SCALE 1" = 40'



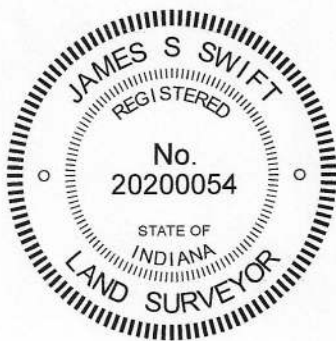
- A - Boone County witness mark, flush, 39.4'
- B - Montgomery county 5/8" rebar witness point, flush, 22.6'
- C - N.E. corner stopsign post, 3" a.g., 12.0'
- D - N.W. corner stopsign post, 1' a.g., 26.8'

Boone County witness mark is a 3/8" diameter x 2' long rebar bearing a metal cap stamped "Boone County Witness Point."



The Harrison monument was set in place of a rebar found.

No specific description of this corner was found in the BCS Surveyor's Record beyond the original establishment of the corner for the sections in Range 3 West as a wood post in 1819 and the holding of that corner for the establishment of the corner for the sections in Range 2 West in 1822. No recent BCS tie cards were found referencing the corner. A section corner dossier provided by the Montgomery County Surveyor's Office, dated April 23, 2015, shows the corner as a stone found 0.9 foot below grade and replaced with a 5/8 inch by 24 inch rebar with aluminum cap. The rebar referenced in the Montgomery County dossier was found in good condition, evidently undisturbed, at 4 inches below grade. The dossier states that several private surveys had held the stone or an iron pin above it as the corner previously. No dimension are reported for the found stone. The corner as established by Montgomery County fits well with local evidence in the form of the intersection of the county roads and fits well with the relative positions of proximate corners. The Montgomery County corner was held and the rebar was replaced with a Harrison monument on March 3, 2020. As noted above, the corners for the sections in Ranges 2 and 3 West represent a common corner with no offset. This is due to the presence of the west line of the Thorntown Reserve to the east and the practice of holding the standard corner and measuring east from it by the federal subdividing surveyors in 1822.



*Kenneth E. Hedge*  
 Kenneth E. Hedge, County Surveyor

*James S. Swift*  
 James S. Swift, IN LS 20200054  
 April 1, 2020

Franklin Township  
 Montgomery County

Sugar Creek Township  
 Boone County

Section 1 T19N, R3W	Section 6 T19N, R2W
Section 12 T19N, R3W	Section 7 T19N, R2W

# SECTION CORNER RECORD

## BOONE COUNTY SURVEYOR'S OFFICE

NW 600-1050

**CORNER 1 ONLY:**

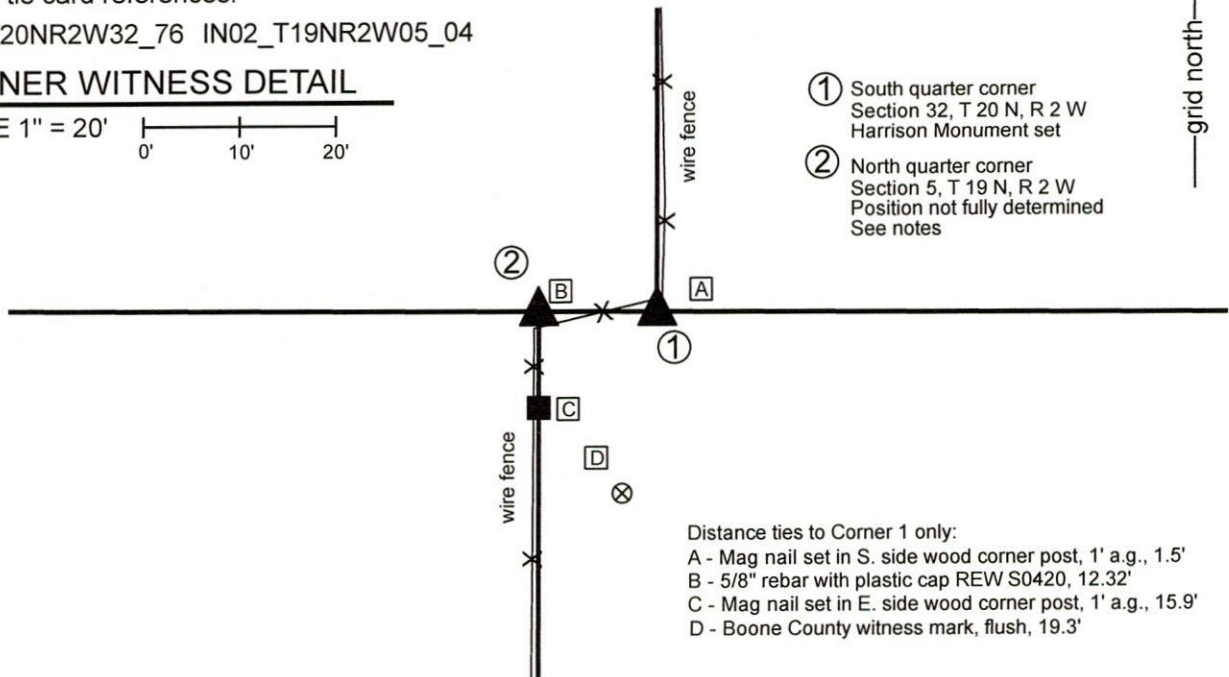
State Plane grid coordinates NAD83 (2011):  
 North: 1777447.69 East: 3069290.90 (U.S. survey feet)

Type of monument: Harrison, 4" disk 'Section Corner'  
 Depth: Two inches above surrounding ground

Indiana tie card references:  
 IN02\_T20NR2W32\_76 IN02\_T19NR2W05\_04

**CORNER WITNESS DETAIL**

SCALE 1" = 20'  
 0' 10' 20'

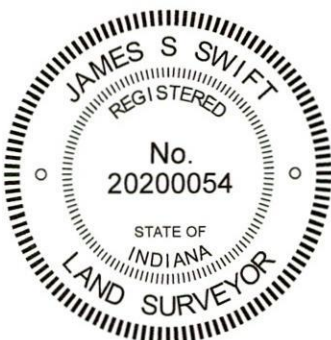


- ① South quarter corner  
Section 32, T 20 N, R 2 W  
Harrison Monument set
- ② North quarter corner  
Section 5, T 19 N, R 2 W  
Position not fully determined  
See notes

Distance ties to Corner 1 only:

- A - Mag nail set in S. side wood corner post, 1' a.g., 1.5'
- B - 5/8" rebar with plastic cap REW S0420, 12.32'
- C - Mag nail set in E. side wood corner post, 1' a.g., 15.9'
- D - Boone County witness mark, flush, 19.3'

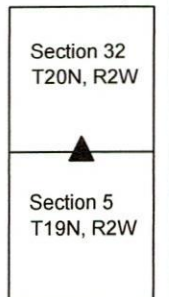
The Harrison Monument was set in place of a capped rebar found. A BCS record of January 31, 1894 states, with respect to Corner 1, "Found rock at corner with stump SW and roots NE, corresponding with orig bearing trees. Set rock + 9.9.9 at corner. Rock + on SW end 13.10.5 under." No specific descriptions of Corner 2 were found in the BCS Surveyor's Record. The computed township line offset at this corner is 19 links or 12.54 feet. This corner was excavated on March 5 and March 9, 2020. A 5/8 inch rebar bearing the cap of Ronald E. Wharry, LS No. S0420 was found slightly south and west of a standing, though relatively new, wood corner post at the intersection of the north and west, providing evidence of Corner 1. Another rebar was found providing evidence of Corner 2, 12.32 feet west, slightly north and east of an ancient post at the intersection of fences to the south and east. Both rebars are shown on a survey by Mr. Wharry which is recorded in Survey Book 13, page 91 in the Office of the Boone County Recorder. The survey shows the rebars at 12.45 feet apart. The actual separation distance is slightly less, though it is noted that the westerly rebar is at the northeast edge of the base an 18 inch diameter Mulberry Tree. It is noted that the end post for the fence to the north is slightly north of the end post for the fence to the south and that the Wharry rebars hold an approximate average of the north-south variation. The respective positions of the rebars work well with evidence of adjacent corners 1/2 mile east, 1/4 mile west and 1/2 mile west. Extensive probing and manual excavation on March 5 and 9, 2020 revealed a large stone at the west edge of the post near Corner 1. This stone did not appear to be a corner stone. No other stones were found at either corner. The easterly of the Wharry rebars was held as marking Corner 1. The rebar was driven deeper into the ground and a Harrison monument was set at the position of the top of the rebar, as found. The final position of Corner 2 will be established on the township line after the standard corner approximately 1/2 mile west is established. It is expected that this position will fall very close to the existing Wharry rebar adjacent to the mulberry tree. Corner 1 was originally established as a wood post in 1819. Corner 2 is not an original federal corner.



*Kenneth E. Hedge*  
 Kenneth E. Hedge, County Surveyor

*James S. Swift*  
 James S. Swift, IN LS 20200054  
 March 17, 2020

Sugar Creek  
 Township



# SECTION CORNER RECORD

NW 600-1200

## BOONE COUNTY SURVEYOR'S OFFICE

State Plane grid coordinates NAD83 (2011):

North: 1777484.88 East: 3061133.77 (U.S. survey feet)

Type of monument: Harrison, 4" disk 'Section Corner'

Depth: Six inches below adjacent road surface

Indiana tie card references:

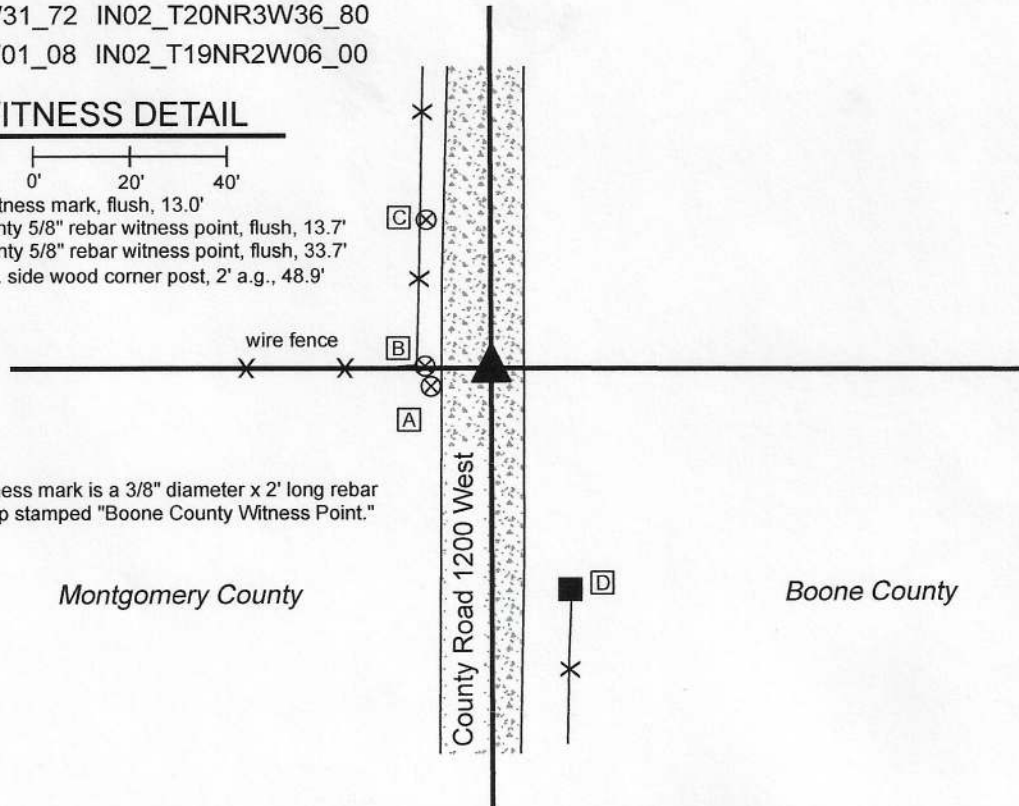
IN02\_T20NR2W31\_72 IN02\_T20NR3W36\_80

IN02\_T19NR3W01\_08 IN02\_T19NR2W06\_00

### CORNER WITNESS DETAIL

SCALE 1" = 40'

- A - Boone County witness mark, flush, 13.0'
- B - Montgomery county 5/8" rebar witness point, flush, 13.7'
- C - Montgomery county 5/8" rebar witness point, flush, 33.7'
- C - Mag nail set in N. side wood corner post, 2' a.g., 48.9'

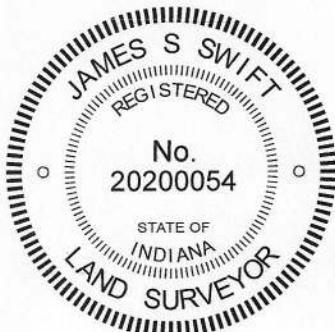


Boone County witness mark is a 3/8" diameter x 2' long rebar bearing a metal cap stamped "Boone County Witness Point."

Montgomery County

Boone County

The Harrison monument was set in place of a rebar found. A BCS record of December 22-23, 1873 states, with respect to this corner, "Rock that was set as from stump." This is interpreted to mean that a stone was found on that date which correlated with the distance tie to the stump of one of the original bearing trees witnessing the corner. No recent BCS tie cards were found referencing the corner. A section corner dossier dated April 12, 2011 provided by the Montgomery County Surveyor shows the corner as a 5/8 inch by 30 inch rebar with aluminum cap set in place of a stone found at 0.7 foot deep in the road. The dossier states that prior to excavation in 2011, a rebar with aluminum cap was found 0.63 foot north and 0.58 foot east of the position of the stone. The dossier indicates that several prior surveys had previously held the capped rebar as marking the corner. No dimensions were given for the found stone. The rebar called in the dossier was found in good condition, evidently undisturbed at 8 inches deep in the road. The position of the Montgomery County corner fits well with local evidence, being in the approximate center of the county road and in line with a fence to the west. It also fits well with the relative positions of proximate corners and works well with the recorded closing distance for the final half mile of the range line between T19N, R2W and T19N, R3W. The Montgomery County corner was held and the aluminum capped rebar was replaced with a Harrison monument on March 4, 2020. Being a township corner, this corner represents a common corner with no offset.



*Kenneth E. Hedge*  
Kenneth E. Hedge, County Surveyor

*James S. Swift*  
James S. Swift, IN LS 20200054  
April 1, 2020

Franklin Township Montgomery County  
Sugar Creek Township Boone County

Section 36 T20N, R3W	Section 31 T20N, R2W
Section 1 T19N, R3W	Section 6 T19N, R2W