

SECTION CORNER RECORD

NW 500-500

BOONE COUNTY SURVEYOR'S OFFICE

State Plane grid coordinates NAD83 (2011):

North: 1771968.50 East: 3098340.82 (U.S. survey feet)

Type of monument: Harrison, 4" disk 'Section Corner'

Depth: One inch below adjacent road surface

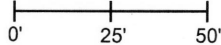
Indiana tie card references:

IN02_T19NR1W06_80 IN02_T19NR1W05_72

IN02_T19NR1W07_08 IN02_T19NR1W08_00

CORNER WITNESS DETAIL

SCALE 1" = 50'



A - Mag nail set in S.E. side power pole, 2' a.g., 143.8'

B - Boone County witness mark, flush, 18.2'

C - Boone County witness mark, flush, 19.4'

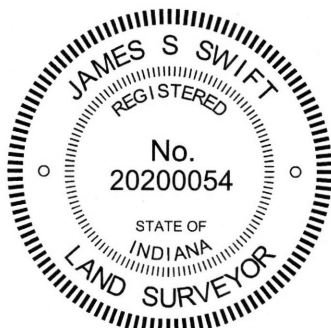
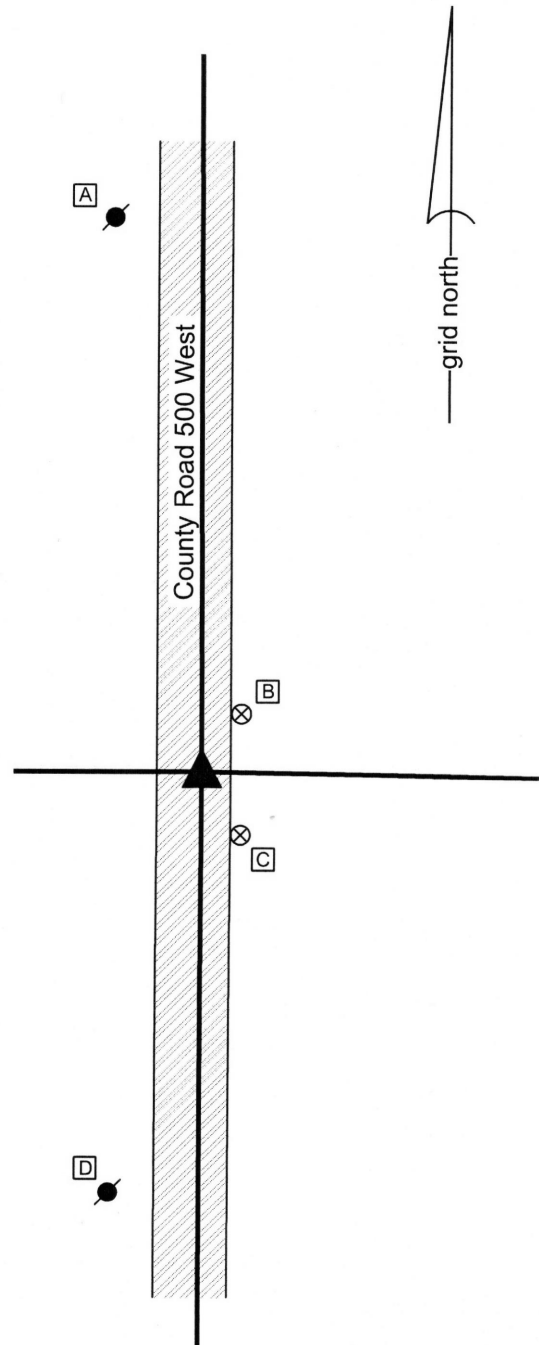
D - Mag nail set in N.E. side power pole, 2' a.g., 109.6'

Boone County witness mark is a 3/8" diameter x 2' long rebar bearing a metal cap stamped "Boone County Witness Point."

The Harrison monument was set over a stone found.

A BCS record dated January 29-February 1, 1870 states, with respect to this corner, "Reest from both trees. Elm dead cut out notch. Set a rock 16.10.7 +." No modern tie cards were found referencing this corner.

Excavation was performed at this corner on April 24, 2015. Prior to excavation, a Mag nail was found at the surface of the asphalt roadway. Excavation revealed a rebar with a metal cap bearing the name of Carl Anderson at 10 inches deep. The rebar was 1.0 foot west and 0.6 foot north of the Mag nail. Further excavation revealed a stone found at 15 inches deep, east of the other two monuments. With 8 inches of the top of the stone exposed, it measured 10 inches N-S by 8 inches E-W and appeared to be vertical and yet much taller. The stone was fully embedded in the clay layer below the road, with the top of the stone at the bottom of the road bed. The stone has a flap top and an etched "+" mark was visible toward the S.W. edge of the top of the stone. The stone was accepted as representing the monument described in the 1870 record and was held as marking the corner. A Harrison monument was set over the etched mark on the top of the stone. The Mag nail and capped rebar were both removed during excavation. The Mag nail had been 1.2 feet north and 1.9 feet west of the mark on the stone. The rebar had been 1.8 feet north and 2.9 feet west of the mark on the stone. This corner was originally established as a wood post in 1829.



Kenneth E. Hedge
Kenneth E. Hedge, County Surveyor

James S. Swift
James S. Swift, IN LS 20200054
March 28, 2016

Washington Township

Section 6 T19N, R1W	Section 5 T19N, R1W
Section 7 T190N, R1W	Section 8 T19N, R1W

SECTION CORNER RECORD

NW 550-500

BOONE COUNTY SURVEYOR'S OFFICE

State Plane grid coordinates NAD83 (2011):

North: 1774620.73 East: 3098332.70 (U.S. survey feet)

Type of monument: Harrison, 4" disk 'Section Corner'

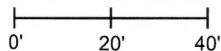
Depth: One inch below adjacent road surface

Indiana tie card references:

IN02_T19NR1W06_44 IN02_T19NR1W05_36

CORNER WITNESS DETAIL

SCALE 1" = 40'



- A - Mag nail set in S.E. side power pole, 2' a.g., 30.1'
- B - Mag nail set in S.W. side power pole, 2' a.g., 28.4'
- C - Boone County witness mark, flush, 27.9'

Boone County witness mark is a 3/8" diameter x 2' long rebar bearing a metal cap stamped "Boone County Witness Point."

The Harrison monument was set in place of one stone found (and removed) and over two other stones found.

A BCS record of August 17, 1860 states, with respect to this corner, "Reest from stump of one tree, and could see where the other tree had stood. Set three rocks. Under one 8.7.3, Middle one 6.5.4, Top one 7.5.4. A subsequent BCS record of September 2, 1886 states "Reestablished from the under Rocks the Top one being out which replaced with one 15.11.9 +. Set witness rock 22 1/2 links West, which is 15.10.5 +...."

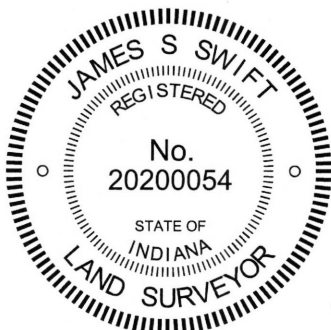
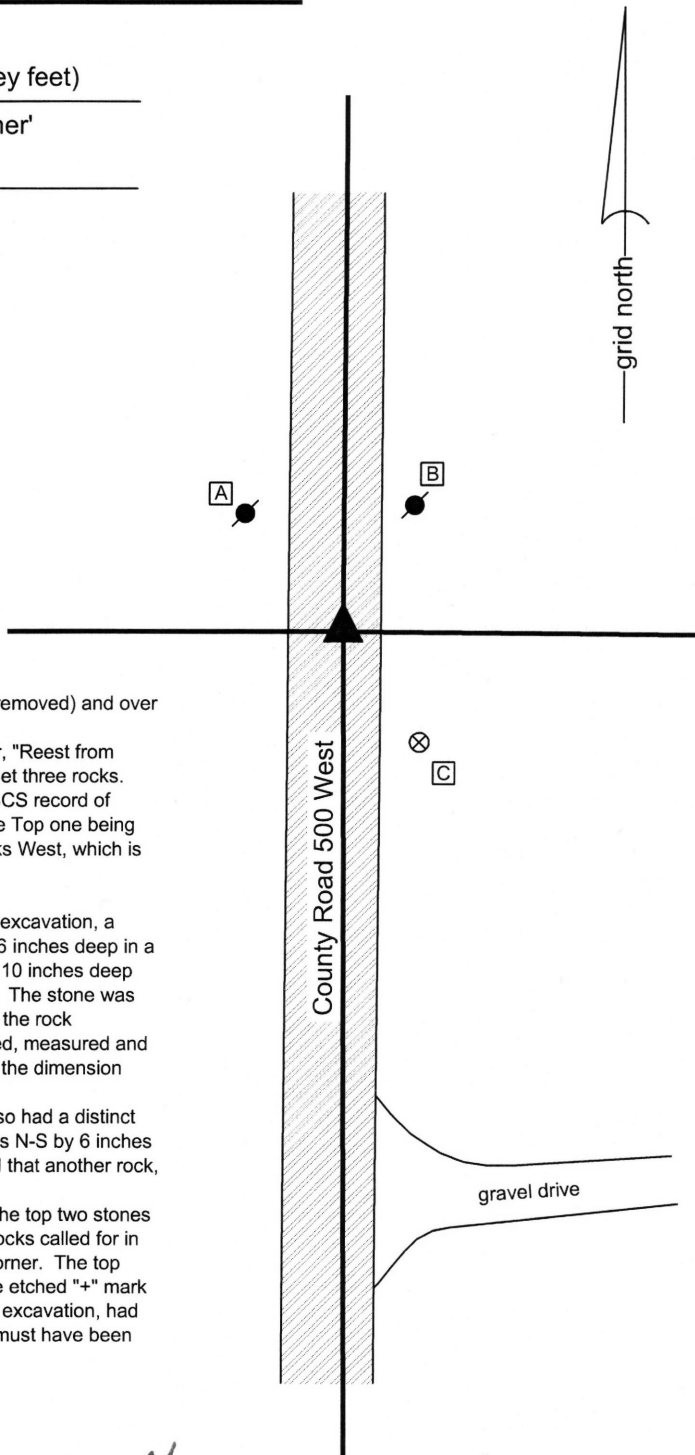
No modern tie cards were found referencing this corner.

Excavation was performed at this corner of April 24, 2015. Prior to excavation, a rebar with a metal cap marked Carl Anderson ENGR was found at 6 inches deep in a hole in the asphalt roadway. Excavation revealed a stone found at 10 inches deep with a distinct "+" mark etched on the top, slightly east of the rebar. The stone was fully embedded in the clay layer below the road bed, with the top of the rock coincident with the bottom of the road bed. The stone was removed, measured and found to be 9 inches tall, by 12 inches by 12 inches, approximating the dimension reported for the rock described in the 1886 record.

Another stone was found directly below the top rock. This stone also had a distinct etched mark on the top. The rock measured approximately 7 inches N-S by 6 inches E-W. The height of the rock was not measured. Probing confirmed that another rock, being the third rock found, was below this stone.

With the presence of three stones, matching the 1886 record, and the top two stones being so clearly marked and approximating the dimensions of the rocks called for in the 1860 and 1886 records, the stones were held as marking the corner. The top most rock was removed and a Harrison monument was set over the etched "+" mark on the second rock found. The capped rebar, also removed during excavation, had been 0.1 foot north and 0.8 foot west of this point, indicating that it must have been driven along or near to the west edge of the found rocks.

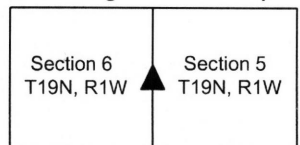
This corner was originally established as a wood post in 1829.



Kenneth E. Hedge
 Kenneth E. Hedge, County Surveyor

James S. Swift
 James S. Swift, IN LS 20200054
 March 28, 2016

Washington Township



SECTION CORNER RECORD

BOONE COUNTY SURVEYOR'S OFFICE

NW 600-500

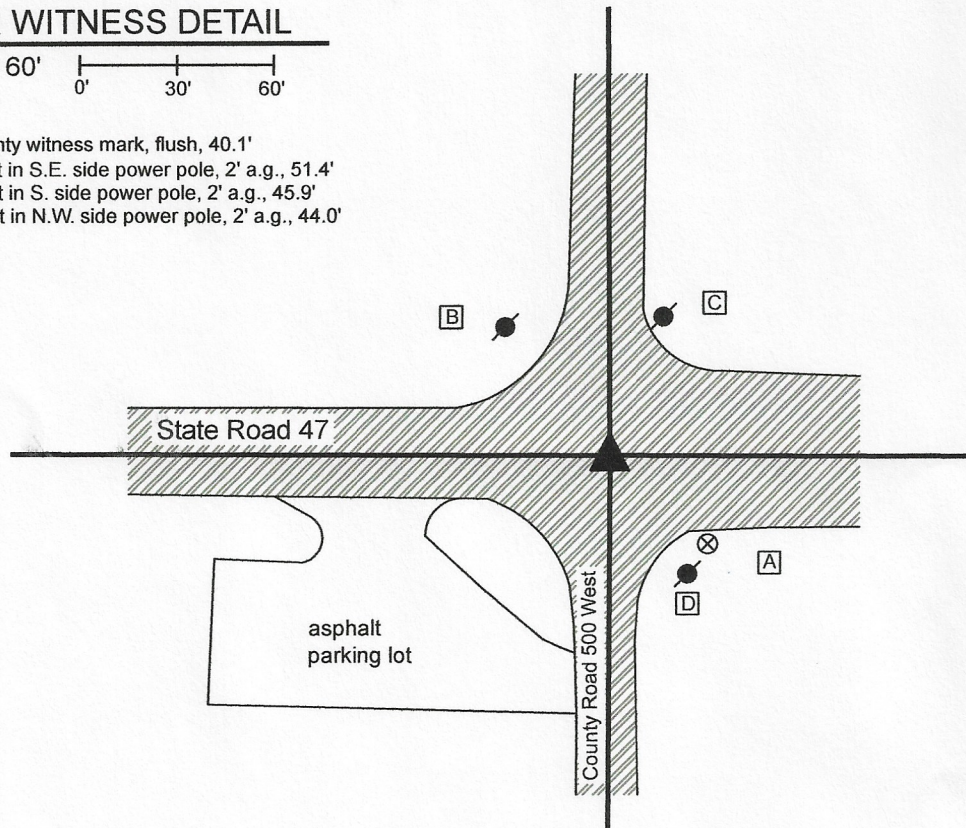
State Plane grid coordinates NAD83 (2011):
 North: 1777316.20 East: 3098345.81 (U.S. survey feet)
 Type of monument: Plug in monument box, INDOT Type B
 Depth: flush with adjacent road surface

Indiana tie card references:
 IN02_T20NR1W31_80 IN02_T20NR1W32_72
 IN02_T19NR1W06_08 IN02_T19NR1W05_00

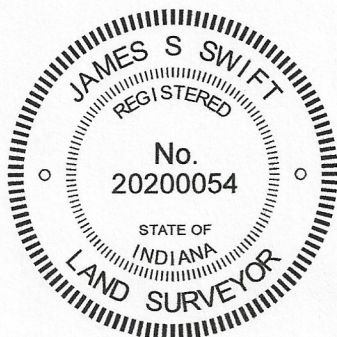
CORNER WITNESS DETAIL

SCALE 1" = 60'

- A - Boone County witness mark, flush, 40.1'
- B - Mag nail set in S.E. side power pole, 2' a.g., 51.4'
- C - Mag nail set in S. side power pole, 2' a.g., 45.9'
- D - Mag nail set in N.W. side power pole, 2' a.g., 44.0'



The INDOT Type B monument was found in place and held as marking the corner.
 No specific descriptions of this corner were found the the BCS Surveyor's Record beyond the original establishment of the corner as a wood post in 1819. Though on a township line, this corner represents a common corner for the sections in township 20 north and township 19 north, as the notes for the subdivision of township 19 north, range 1 west, 1829, state that the closing corner fell "at post" and no township line offset was recorded.
 A BCS tie card dated June 22, 2005 shows the corner as a PK Nail in the center of the intersection of the two roads. At some point between that date and January 2, 2007 (exact date not known), the PK nail was replaced with an INDOT Type B monument in the same position. As this corner falls in a state road, no significant excavation was performed. The INDOT Type B monument is held as marking the corner.



Kenneth E. Hedge
 Kenneth E. Hedge, County Surveyor

James S. Swift
 James S. Swift, IN LS 20200054

June 1, 2020

Washington Township

Section 31 T20N, R1W	Section 32 T20N, R1W
Section 6 T19N, R1W	Section 5 T19N, R1W

SECTION CORNER RECORD

BOONE COUNTY SURVEYOR'S OFFICE

NW 600-550

State Plane grid coordinates NAD83 (2011):

North: 1777324.54 East: 3095692.96 (U.S. survey feet)

Type of monument: Plug in monument box, INDOT Type B

Depth: Flush with adjacent road surface

Indiana tie card references:

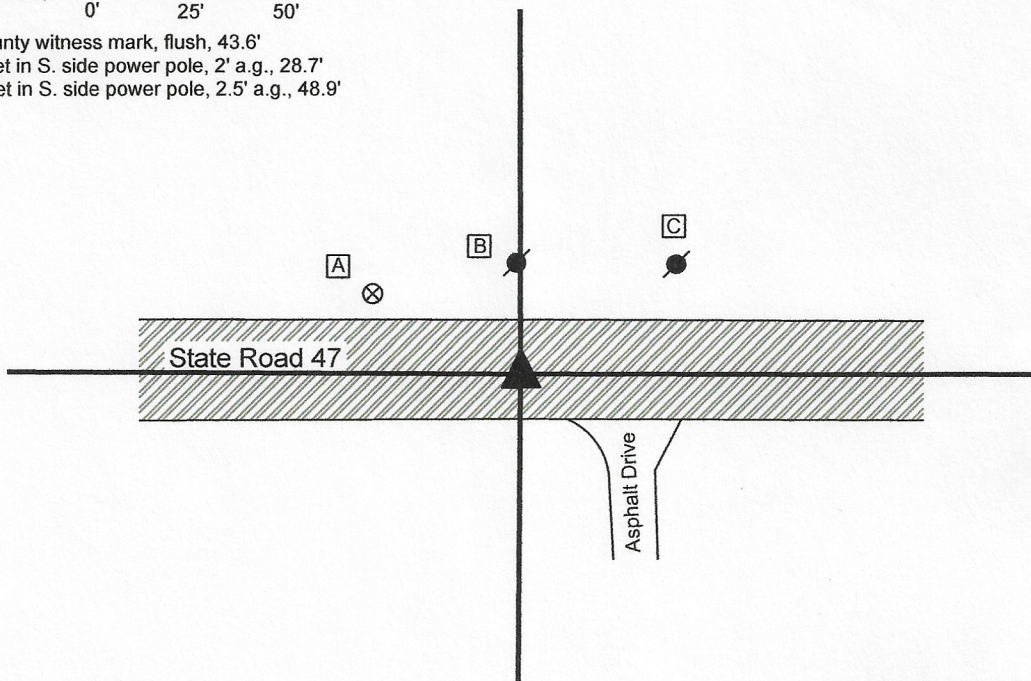
IN02_T20NR1W31_76

IN02_T19NR1W06_08

CORNER WITNESS DETAIL

SCALE 1" = 50'

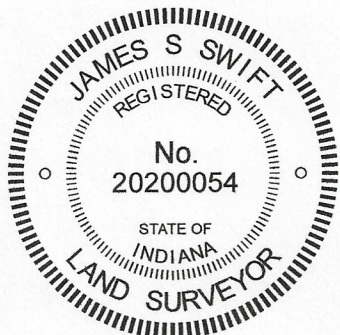
- A - Boone County witness mark, flush, 43.6'
- B - Mag nail set in S. side power pole, 2' a.g., 28.7'
- C - Mag nail set in S. side power pole, 2.5' a.g., 48.9'



The INDOT Type B monument was found in place and held as marking the corner.

No specific descriptions of this corner were found in the Boone County Surveyor's Record beyond the original establishment of the corner as a wood post in 1819. During the 1829 subdivision of Township 19 North, Range 1 West, no offset was observed on the township line for the standard and closing corners at the northeast corner of section 6 and southeast corner of section 31, hence no offset exists at this corner. This corner represents a common, single corner for section 6 and section 31.

A BCS tie card dated June 22, 2005 shows the corner as a railroad spike. This monument was replaced with an INDOT Type B monument at some point (exact date not known) between that date and January 2, 2007. The Type B monument is held as marking the corner. No significant excavation was performed at this corner as it falls in a state road.



Kenneth E. Hedge
 Kenneth E. Hedge, County Surveyor

James S. Swift
 James S. Swift, IN LS 20200054

June 1, 2020

Washington Township

