

SECTION CORNER RECORD

BOONE COUNTY SURVEYOR'S OFFICE

NE 500-000

State Plane grid coordinates NAD83 (CORS96):

Corner 1: North: 1772009.54 East: 3124823.06 (U.S. survey feet)

Corner 2: North: 1772102.14 East: 3124822.80 (U.S. survey feet)

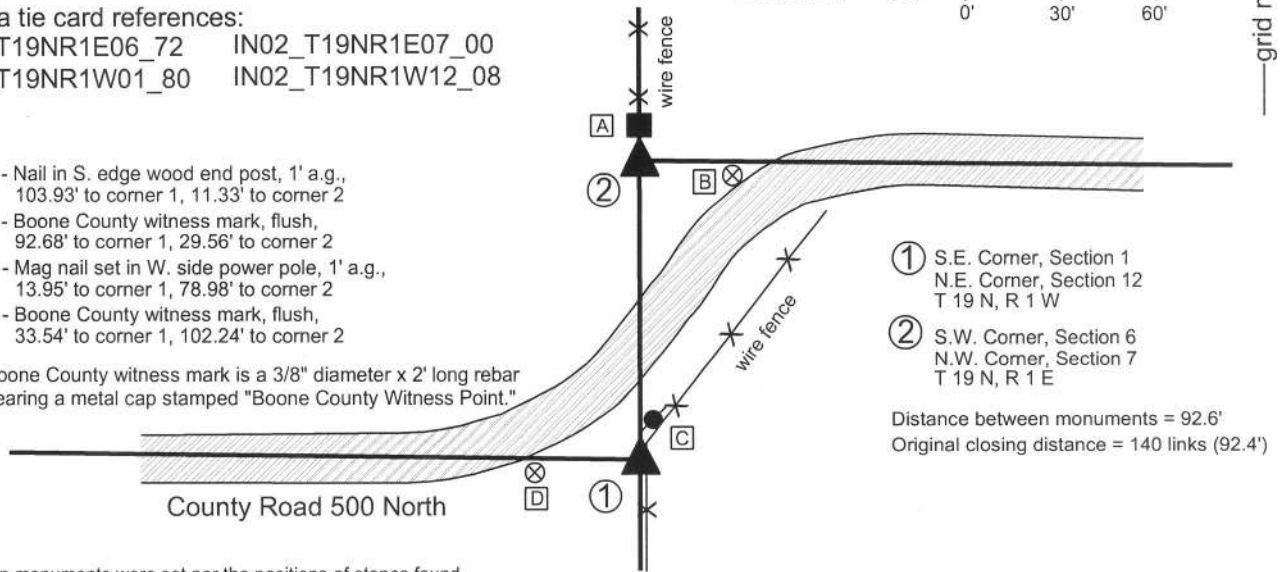
Type of monument: Harrison, 4" disk 'Section Corner'
 Depth: flush to 2 inches above adjacent ground.

Indiana tie card references:

IN02_T19NR1E06_72 IN02_T19NR1E07_00
 IN02_T19NR1W01_80 IN02_T19NR1W12_08

- A - Nail in S. edge wood end post, 1' a.g., 103.93' to corner 1, 11.33' to corner 2
- B - Boone County witness mark, flush, 92.68' to corner 1, 29.56' to corner 2
- C - Mag nail set in W. side power pole, 1' a.g., 13.95' to corner 1, 78.98' to corner 2
- D - Boone County witness mark, flush, 33.54' to corner 1, 102.24' to corner 2

Boone County witness mark is a 3/8" diameter x 2' long rebar bearing a metal cap stamped "Boone County Witness Point."



The harrison monuments were set per the positions of stones found.

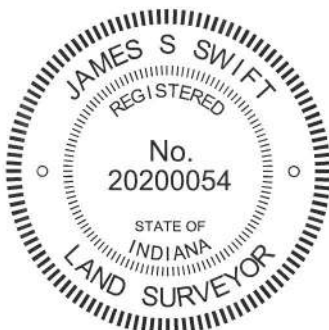
A BCS record of May 9, 1872 pertaining to the southwest corner of section 6, T19N, R1E (corner 2) states "Reestablished from Elm and Stump of Burr Oak. Elm is 67 links dist. Set Rock 14.8.5 1/2 marked +." A BCS record of April 19, 1895 pertaining to the southeast corner of section 1, T19N, R1W (corner 1) states "Set rock 24x15x5 established from lap." It is noted that the term "lap" refers to the offset distance between the standard and closing corners on the range line. At this corner the "lap" recorded in the original notes is 140 links, or 92.4 feet.

BCS tie cards dated October 14, 1971 pertaining to each of the corners state that a stone was found at corner 1 and that no stone was found and a RRR (railroad rail) was "put in" at corner 2. The tie cards show the two corners to be 97 feet apart. A BCS tie card dated January 18, 1994 pertaining to corner 1 shows the corner as being a 1/2 inch rebar. This card shows corner 1 to be 108 feet south of a corner post to the north. As the rail called for in the 1971 tie card was found at 11 feet south of this post and the stone called for in 1971 tie card was shown to be 97 feet south of the rail, it is evident that the 1/2 inch rebar called for in 1994 was in the position of the stone called for in 1971. A pair of BCS tie cards dated September 20, 2005 show corner 1 as a harrison monument and corner 2 as a railroad rail, with the two monuments at 92.39 feet apart.

Excavation in the fall of 2013, concluding on October 29, 2013 revealed both of the record stones described in the 1872 and 1895 records. The stone at corner 1 was found at 4 inches deep, slightly southwest of the harrison monument shown on the 2005 record. This stone measures 24 inches tall by 15 inches N-S by 5 inches E-W. The rebar shown on the 1994 tie card was found 4.6 feet south and 1.4 feet west of the stone. The stone at corner 2 was found 0.8 feet south and 0.8 feet east of the railroad rail shown on the 1971 and 2005 tie cards. This stone was found at 6 inches deep and measured 14 inches tall by 8 inches E-W by 5 1/2 inches N-S. The distance measured from the high point to the high point of the respective stones was 92.6 feet, barely longer than the record call of 140 links (92.4 feet). The harrison monument and railroad were both removed. The stone at corner 2 was also removed and replaced with a harrison monument set at the position of the high point of the stone. The stone at corner 1 was left in place. The specific position of corner 1 was determined at 92.6 feet along the prolongation of the range line from the standard corner 1/2 mile north through the stone at corner 2. This point fell slightly east of the high point of the stone. A 15 inch diameter section of HDPE storm pipe was notched and set vertically over and amongst the stone. The stone was encased in concrete and the harrison monument was set at the calculated point slightly east of the high point of the stone. It is noted that typically the closing corner is shifted to fit to the range line, per the procedures of the original federal surveyors. However, in this case it is clear the stone at corner 2 was established first per the bearing trees and that the stone at corner 1 was established relative to corner 2. Hence, in this particular case, corner 2 was held as the dominant corner for purposes of establishing the range line, though given that corner 1 was established along the prolongation of the line from the north through corner 2, the bend in the range line occurs at corner 1, as is typical. Corner 2 falls on the range line with no bend at that point.

No stone was found near the 1/2 inch rebar called for in the 1994 tie card. An adjoining land owner stated that a large rock had been visible above ground at that point but was removed many years ago.

Corner 1 was established in October, 1819 and corner 2 was originally established in June, 1822.



Kenneth E. Hedge
 Kenneth E. Hedge, County Surveyor

James S. Swift
 James S. Swift, IN LS 20200054
 February 5, 2015

Washington Township	Clinton Township
Section 1 T19N, R1W	Section 6 T19N, R1E
Section 12 T19N, R1W	Section 7 T19N, R1E

PHOTOGRAPHIC DOCUMENTATION

Date of photography: October 22-29, 2013

View from above showing the stone at the closing corner and the railroad rail.



The closing corner and the fence to the north.



View from above the stone at the closing corner, looking east along C.R. 500 North.



The stone at the standard corner, and the harrison monument found. See documentation.



The stone at the standard corner. View from above and west.



For details and documentation, refer to related sheet "Section Corner Record."

SECTION CORNER RECORD

BOONE COUNTY SURVEYOR'S OFFICE

NE 500-050

State Plane grid coordinates NAD83 (CORS96):
 North: 1772080.80 East: 3127182.04 (U.S. survey feet)

Type of monument: Harrison, 4" disk 'Section Corner'
 Depth: One inch below adjacent road surface

Indiana tie card references:
 IN02_T19NR1E06_36
 IN02_T19NR1E07_04

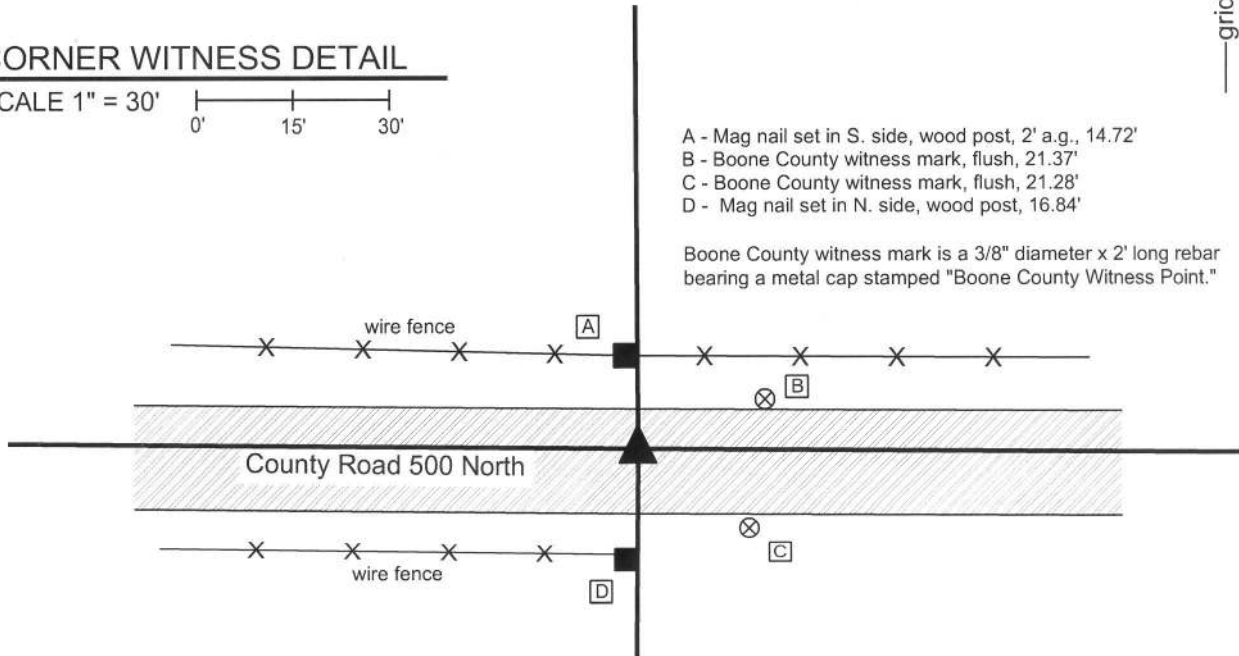


CORNER WITNESS DETAIL

SCALE 1" = 30'

- A - Mag nail set in S. side, wood post, 2' a.g., 14.72'
- B - Boone County witness mark, flush, 21.37'
- C - Boone County witness mark, flush, 21.28'
- D - Mag nail set in N. side, wood post, 16.84'

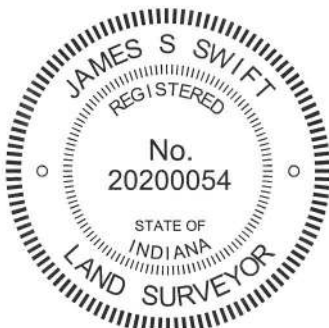
Boone County witness mark is a 3/8" diameter x 2' long rebar bearing a metal cap stamped "Boone County Witness Point."



The harrison monument was set over a stone found.

A BCS record of May 9, 1872 states "Reestablished from Sycamore. Set Rock 11.7.51/2 +." A BCS tie card dated July 16, 1975 states "no stone found set rod." A BCS tie card dated August 2, 2005 shows the corner as a harrison monument with no documentation of source.

This corner was excavated on November 12, 2013. Prior to excavation, a harrison monument was found 2 inches deep in a hole in the asphalt road. Excavation revealed a stone found at 11 inches. The stone appeared to be leaning slightly towards the southwest. With the top 6 inches of the stone exposed it measured 7 inches N-S by 5 1/2 inches E-W. A vague mark was visible on the east edge of the stone. The stone was embedded in the clay layer below the road bed with the top of the stone at the bottom of the road bed. The stone was accepted as being the monument described in the 1872 record and was held as marking the corner. The stone was left in place and a harrison monument was set over the top of the stone at the apparent position which would have been the center of mass of the stone before it was leaned slightly southwest. The harrison monument found prior to excavation had been 1.2 feet south and 1.5 feet west of the stone. This corner was originally established as a wood post in 1822.



Kenneth E. Hedge
 Kenneth E. Hedge, County Surveyor

James S. Swift
 James S. Swift, IN LS 20200054
 February 5, 2015

Clinton Township

Section 6
 T19N, R1E



Section 7
 T19N, R1E

PHOTOGRAPHIC DOCUMENTATION
Date of photography: November 12, 2013

The stone as first exposed.
View from above and south.



View of the stone from above and east.



The stone, slightly east of the post on the south side of the road.



View from above the stone looking west along County Road 500 North.



For details and documentation, refer to related sheet "Section Corner Record."

SECTION CORNER RECORD

NE 500-100

BOONE COUNTY SURVEYOR'S OFFICE

State Plane grid coordinates NAD83 (CORS96):

North: 1772060.68 East: 3129821.84 (U.S. survey feet)

Type of monument: Harrison, 4" disk 'Section Corner'

Depth: six inches below adjacent gravel road surface

Indiana tie card references:

IN02_T19NR1E06_80 IN02_T19NR1E05_72

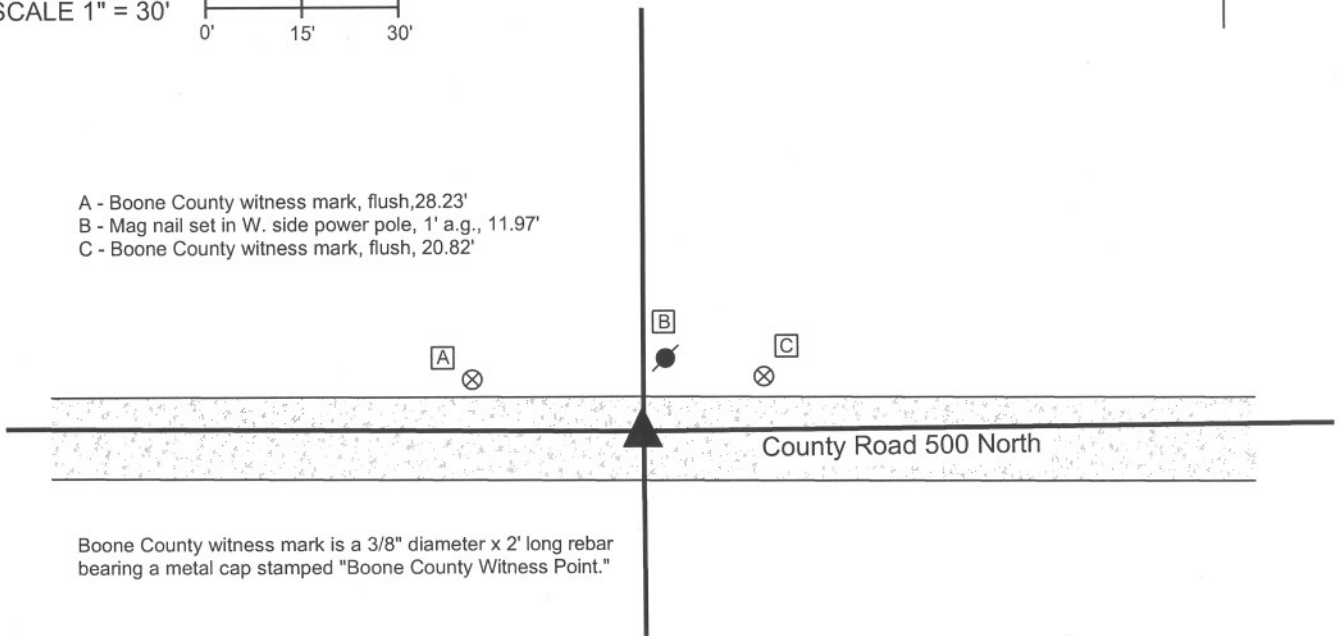
IN02_T19NR1E07_08 IN02_T19NR1E08_00



CORNER WITNESS DETAIL

SCALE 1" = 30'

- A - Boone County witness mark, flush, 28.23'
- B - Mag nail set in W. side power pole, 1' a.g., 11.97'
- C - Boone County witness mark, flush, 20.82'



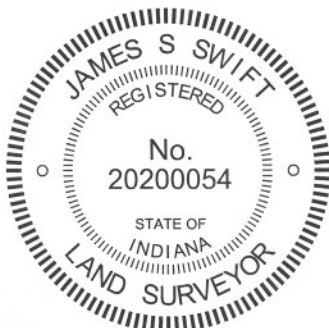
Boone County witness mark is a 3/8" diameter x 2' long rebar bearing a metal cap stamped "Boone County Witness Point."

The Harrison monument was set in place of a Harrison monument found.

No specific descriptions of this corner were found in the BCS Surveyor's Record. A BCS tie card dated September 29, 2005 shows the corner as a Harrison monument with no documentation of source.

This corner was excavated on June 19, 2012. Prior to excavation a Harrison monument was found which fit with the 2005 distance ties. Excavation of an area extending 4 feet north, 5 feet east, 4 feet south and 4 feet west of the Harrison monument revealed no further evidence of the corner. The road bed is only 6 inches in this area. The Harrison monument fit with local evidence in the form of the center of the county road to the east and west and the broken-off wood post on the north side of the road. The position of the found Harrison was held as the corner. The found Harrison monument was removed during excavation and replaced with a new Harrison in the same position.

This corner was originally established as a wood post in June, 1822.



Kenneth E. Hedge
Kenneth E. Hedge, County Surveyor

James S. Swift
James S. Swift, IN LS 20200054
January 15, 2013

Clinton Township

Section 6 T19N, R1E	Section 5 T19N, R1E
Section 7 T19N, R1E	Section 8 T19N, R1E

SECTION CORNER RECORD

NE 550-000

BOONE COUNTY SURVEYOR'S OFFICE

State Plane grid coordinates NAD83 (CORS96):

North: 1774643.20 East: 3124815.16 (U.S. survey feet)

Corner 1 only

Type of monument: Harrison, 4" disk 'Section Corner'

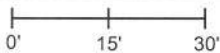
Depth: Four inches above adjacent ground

Indiana tie card references:

IN02_T19NR1E06_36

IN02_T19NR1W01_44

CORNER WITNESS DETAIL

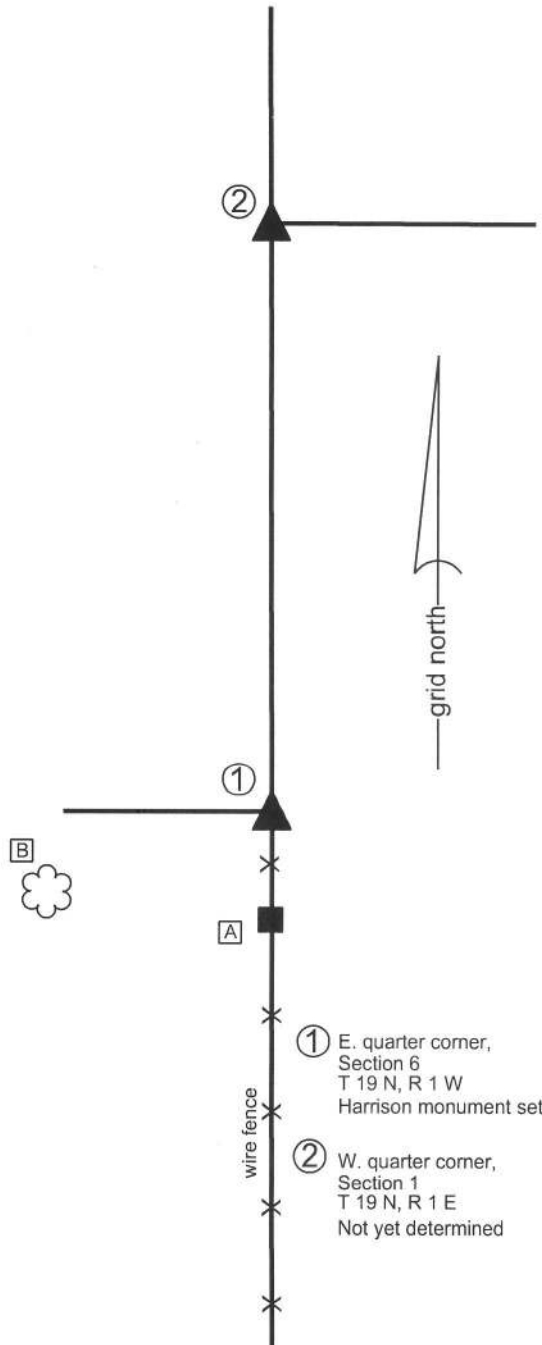
SCALE 1" = 30' 

- A - East edge of 12 in. diameter walnut tree at 2' a.g., 33.6'
- B - Mag nail set in W. side, wood line post, 2' a.g., 16.5'

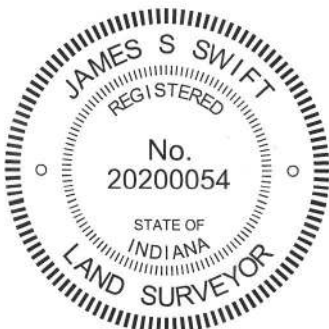
The harrison monument was set in place of the base of a wood corner post. A BCS record of October 25, 1878 states, with respect to corner 1 "Reest. from trees, the sugar is dead & only stp of ash. Set a rock 10.7.5 marked +. Thence N. 140 links Est quar sect. on west of section 6, Set a rock 10.8.6 +." A record pertaining just to corner 2 states that the 10.8.6 + rock was set 140 links N. of the standard corner, but this record is dated October 25, 1876. No explanation is offered for the two year discrepancy in the records.

This corner was excavation on October 23, 2013. Prior to excavation, a wood corner post was found with existing, though ancient, fence to the south and west with fencing apparently cut off towards the east. Manual excavation in the vicinity of the post yielded several small rocks found but none appeared to be the stone described in the 1878 record. The found rocks also did not appear to be intended to act as corner marker stones. Corner 2 falls in a tilled field. Extensive probing was performed in the vicinity of corner 2, as determined at 140 links N of corner 1. No further evidence was found in the vicinity of corner 2. The corner post was accepted as providing the best evidence of corner 1. The post was rotten at the base and the above ground portion of the post appeared to be yet standing due to being supported by wire from the adjacent fence. The fencing was cut-away and the post was broken off at ground level. The top portion of the post was pushed away to the west. The in-ground portion the post was chopped out of the ground and a harrison monument was set in place of the post. The specific location of corner 2 has not yet been determined as of the publication of this document.

Corner 1 was originally established as a wood post in 1819. Corner 2 was not set by the original federal surveyors.

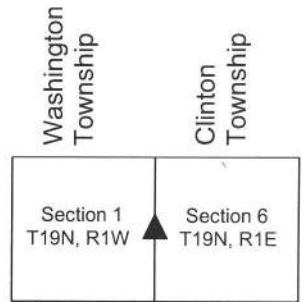


- ① E. quarter corner, Section 6 T 19 N, R 1 W Harrison monument set
- ② W. quarter corner, Section 1 T 19 N, R 1 E Not yet determined



Kenneth E. Hedge
Kenneth E. Hedge, County Surveyor

James S. Swift
James S. Swift, IN LS 20200054
February 5, 2015



SECTION CORNER RECORD

NE 550-100

BOONE COUNTY SURVEYOR'S OFFICE

State Plane grid coordinates NAD83 (2011):

Corner: North: 1774714.83 East: 3129820.46 (U.S. survey feet)

Witness: North: 1774714.83 East: 3129820.96 (U.S. survey feet)

Type of monument at corner: Wood Corner Post

Witness: 5/8 inch diameter rebar with metal cap 'Boone County Surveyor'

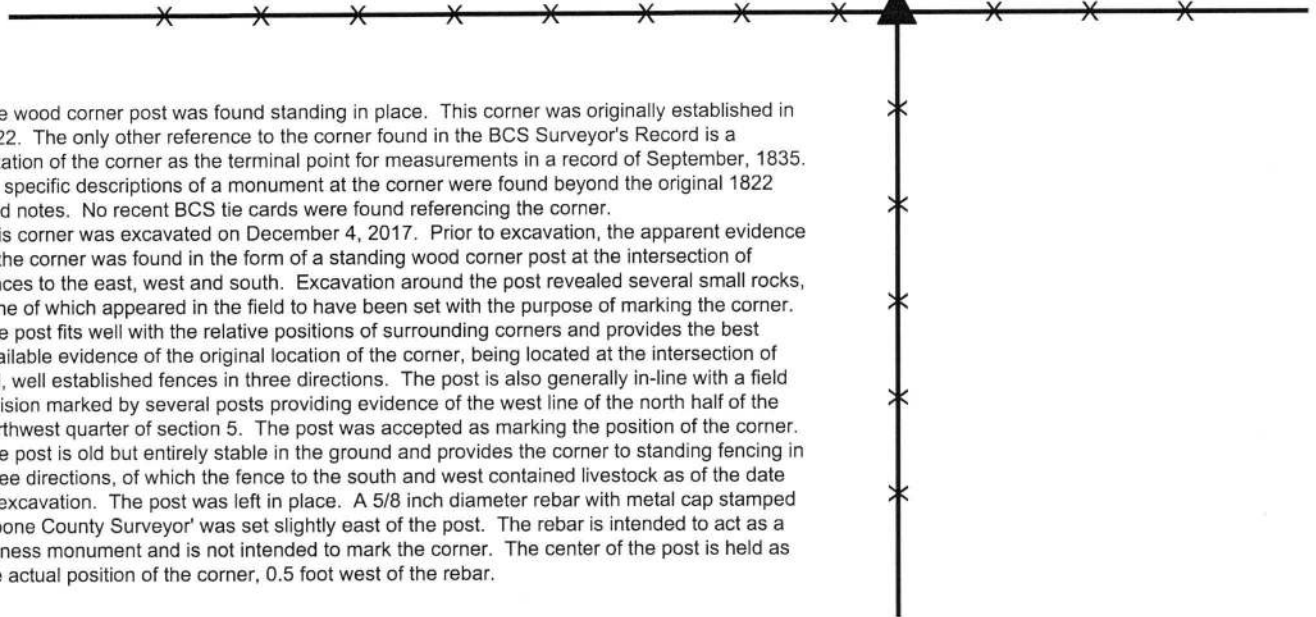
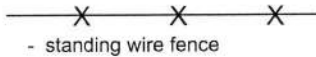
Indiana tie card references:

IN02_T19NR1E06_44 IN02_T19NR1E05_36



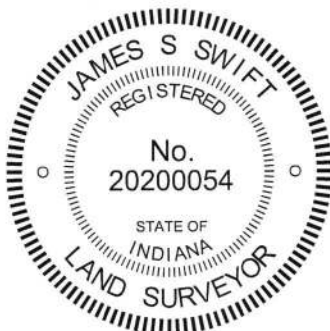
CORNER WITNESS DETAIL

No scale



The wood corner post was found standing in place. This corner was originally established in 1822. The only other reference to the corner found in the BCS Surveyor's Record is a notation of the corner as the terminal point for measurements in a record of September, 1835. No specific descriptions of a monument at the corner were found beyond the original 1822 field notes. No recent BCS tie cards were found referencing the corner.

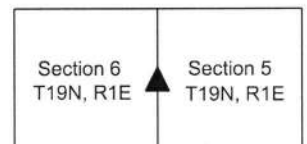
This corner was excavated on December 4, 2017. Prior to excavation, the apparent evidence of the corner was found in the form of a standing wood corner post at the intersection of fences to the east, west and south. Excavation around the post revealed several small rocks, none of which appeared in the field to have been set with the purpose of marking the corner. The post fits well with the relative positions of surrounding corners and provides the best available evidence of the original location of the corner, being located at the intersection of old, well established fences in three directions. The post is also generally in-line with a field division marked by several posts providing evidence of the west line of the north half of the northwest quarter of section 5. The post was accepted as marking the position of the corner. The post is old but entirely stable in the ground and provides the corner to standing fencing in three directions, of which the fence to the south and west contained livestock as of the date of excavation. The post was left in place. A 5/8 inch diameter rebar with metal cap stamped 'Boone County Surveyor' was set slightly east of the post. The rebar is intended to act as a witness monument and is not intended to mark the corner. The center of the post is held as the actual position of the corner, 0.5 foot west of the rebar.



Kenneth E. Hedge
Kenneth E. Hedge, County Surveyor

James S. Swift
James S. Swift, IN LS 20200054
February 21, 2018

Clinton Township



SECTION CORNER RECORD

NE 600-000

BOONE COUNTY SURVEYOR'S OFFICE

State Plane grid coordinates NAD83 (2011):
North: 1777284.21 East: 3124807.27 (U.S. survey feet)

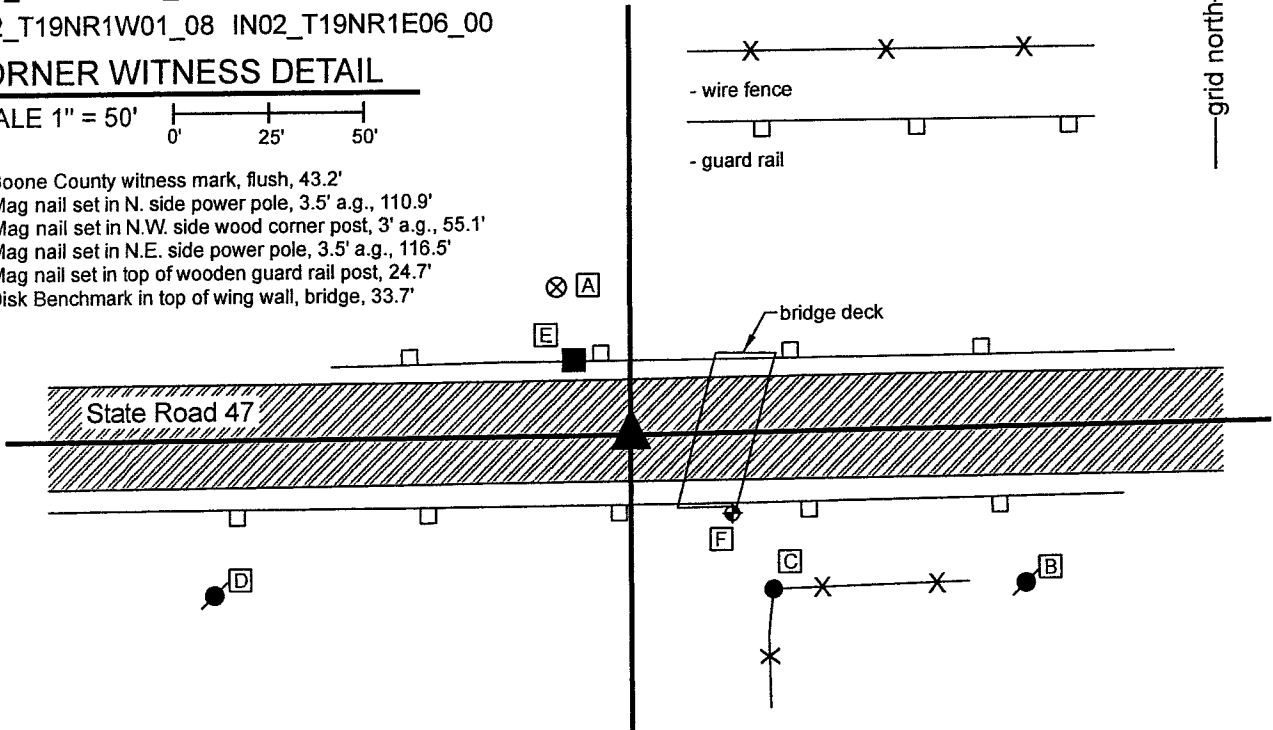
Type of monument: INDOT Type B, plug in monument box
Depth: Flush with adjacent road surface

Indiana tie card references:
IN02_T20NR1E31_72 IN02_T20NR1W36_80
IN02_T19NR1W01_08 IN02_T19NR1E06_00

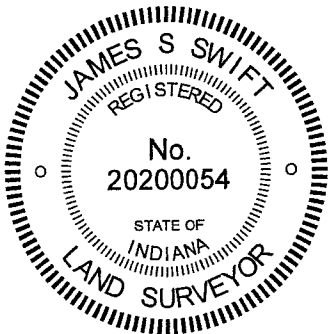
CORNER WITNESS DETAIL

SCALE 1" = 50'

- A - Boone County witness mark, flush, 43.2'
- B - Mag nail set in N. side power pole, 3.5' a.g., 110.9'
- C - Mag nail set in N.W. side wood corner post, 3' a.g., 55.1'
- B - Mag nail set in N.E. side power pole, 3.5' a.g., 116.5'
- E - Mag nail set in top of wooden guard rail post, 24.7'
- F - Disk Benchmark in top of wing wall, bridge, 33.7'



The INDOT Type B monument was found in place.
 A BCS record of November 10, 1887 shown in the records of Section 36, Township 20 North, Range 1 West states, with respect to this corner, "Drove stake in road at corner, 36 1/2 links north of corner."
 A BCS tie card dated 2004 shows the corner as a P.K. Nail with washers. A subsequent BCS tie card, dated June 22, 2005, shows the corner as a Type "C" Monument in the same position as the nail shown on the previous tie card.
 The monument found, being an INDOT Type 'B' monument, appears to be the same monument, in the same position, as those shown on the 2005 tie cards. This corner falls amidst an area of fill immediately west of a bridge under State Road 47. The only local evidence of the corner is the east-west state road. The position of the corner fits well with the relative positions of proximate corners to the east and west.
 No excavation was performed at this corner, as it falls in a state highway and is an area of fill. The existing monument is held as the best available evidence of the respective corner. This township corner was originally established as a wood post in 1819.



Kenneth E. Hedge
 Kenneth E. Hedge, County Surveyor

James S. Swift
 James S. Swift, IN LS 20200054
 January 26, 2021

Washington Township	Clinton Township
Section 36 T20N, R1W	Section 31 T20N, R1E
Section 1 T19N, R1W	Section 6 T19N, R1E

SECTION CORNER RECORD

NE 600-100

BOONE COUNTY SURVEYOR'S OFFICE

State Plane grid coordinates NAD83 (2011):

Corner 1: North: 1777337.73 East: 3129618.11 (U.S. survey feet)

Corner 2: North: 1777340.10 East: 3129793.16 (U.S. survey feet)

Type of monument: Plug in monument box, INDOT Type B

Depth: One inch below adjacent road surface

Indiana tie card references:

IN02_T20NR1E32_72 IN02_T20NR1E31_80

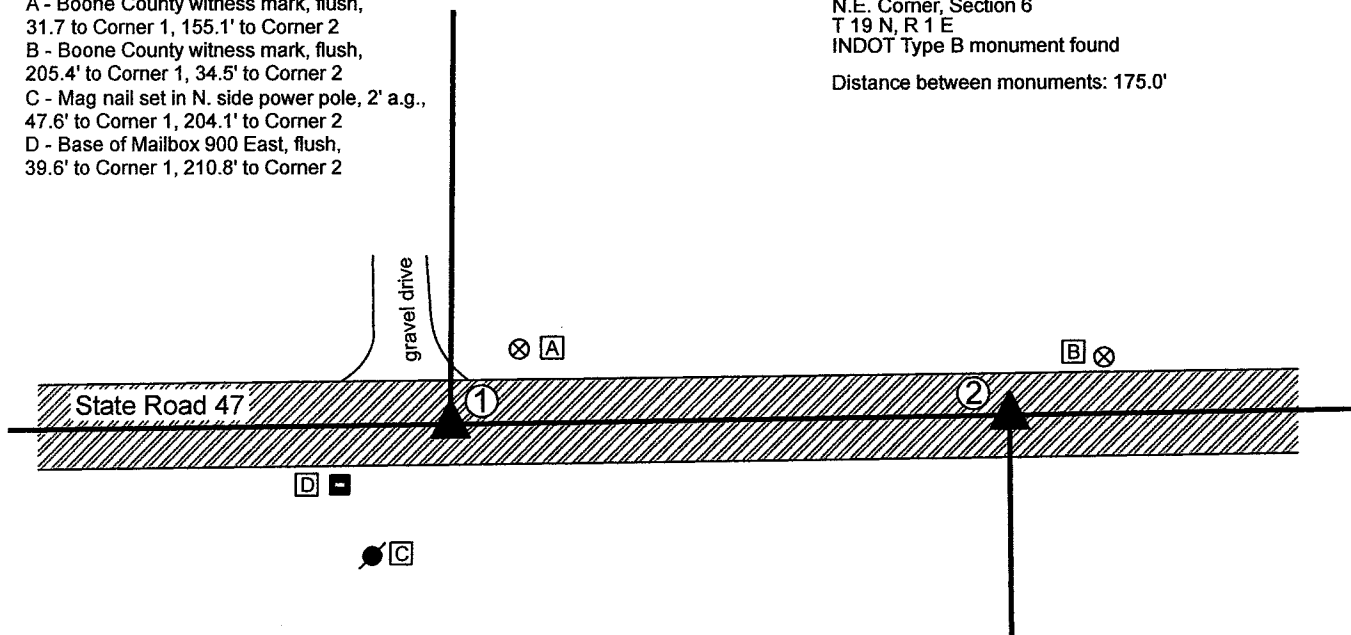
IN02_T19NR1E06_08 IN02_T19NR1E05_00

CORNER WITNESS DETAIL

SCALE 1" = 60'

- A - Boone County witness mark, flush, 31.7' to Corner 1, 155.1' to Corner 2
- B - Boone County witness mark, flush, 205.4' to Corner 1, 34.5' to Corner 2
- C - Mag nail set in N. side power pole, 2' a.g., 47.6' to Corner 1, 204.1' to Corner 2
- D - Base of Mailbox 900 East, flush, 39.6' to Corner 1, 210.8' to Corner 2

- ① S.E. Corner, Section 31
S.W. Corner, Section 32
T 20 N, R 1 E
INDOT Type B monument found
 - ② N.W. Corner, Section 5
N.E. Corner, Section 6
T 19 N, R 1 E
INDOT Type B monument found
- Distance between monuments: 175.0'



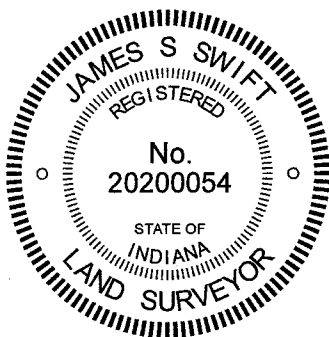
The INDOT Type B monuments were found in place and held as marking the respective corners.

A BCS record of June 2-3, 1862 states, with respect to Corner 1, "Found by measuring the lap from corners Sections 5&6 where found a stone and one tree. Set two Rocks at G. One 8.7 by 5. Top one 24.16 by 8 in." No specific descriptions of Corner 2 were found in the BCS Surveyor's Record beyond the original establishment of the corner as a wood post in 1822, 265 links east of Corner 1, though the corner is referenced in the 1862 record for Corner 1.

A BCS tie card dated June 22, 2005 shows both corners at Type "C" monuments.

The found monuments, being INDOT Type B monuments, fit with the 2005 tie card and also fit with evidence of occupation in the form of the edge of a field and lawn to the north and a field division to the south, respectively. The distance between the monuments fits within 0.2 foot of the original federal closing distance of 265 links. No excavation was performed at these corners as they fall in a state road. The found Type B monuments were held as marking the respective corners.

Corner 1 was originally established as a wood post in 1819. Corner 2 was originally established as a wood post in 1822.



Kenneth E. Hedge
Kenneth E. Hedge, County Surveyor

James S. Swift
James S. Swift, IN LS 20200054
December 20, 2021

Clinton Township

Section 31 T20N, R1E	Section 32 T20N, R1E
Section 6 T19N, R1E	Section 5 T19N, R1E