

SECTION CORNER RECORD

SW 000-1100

BOONE COUNTY SURVEYOR'S OFFICE

State Plane grid coordinates NAD83 (2011):

Corner 2: North: 1745581.47 East: 3066646.78709 (U.S. survey feet)

Type of monument: Harrison, 4" disk 'Section Corner'

Depth: Six inches below adjacent road surface

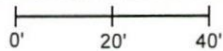
Indiana tie card references:

IN02_T19NR2W32_72 IN02_T19NR2W31_80

IN02_T18NR2W06_08 IN02_T18NR2W05_00

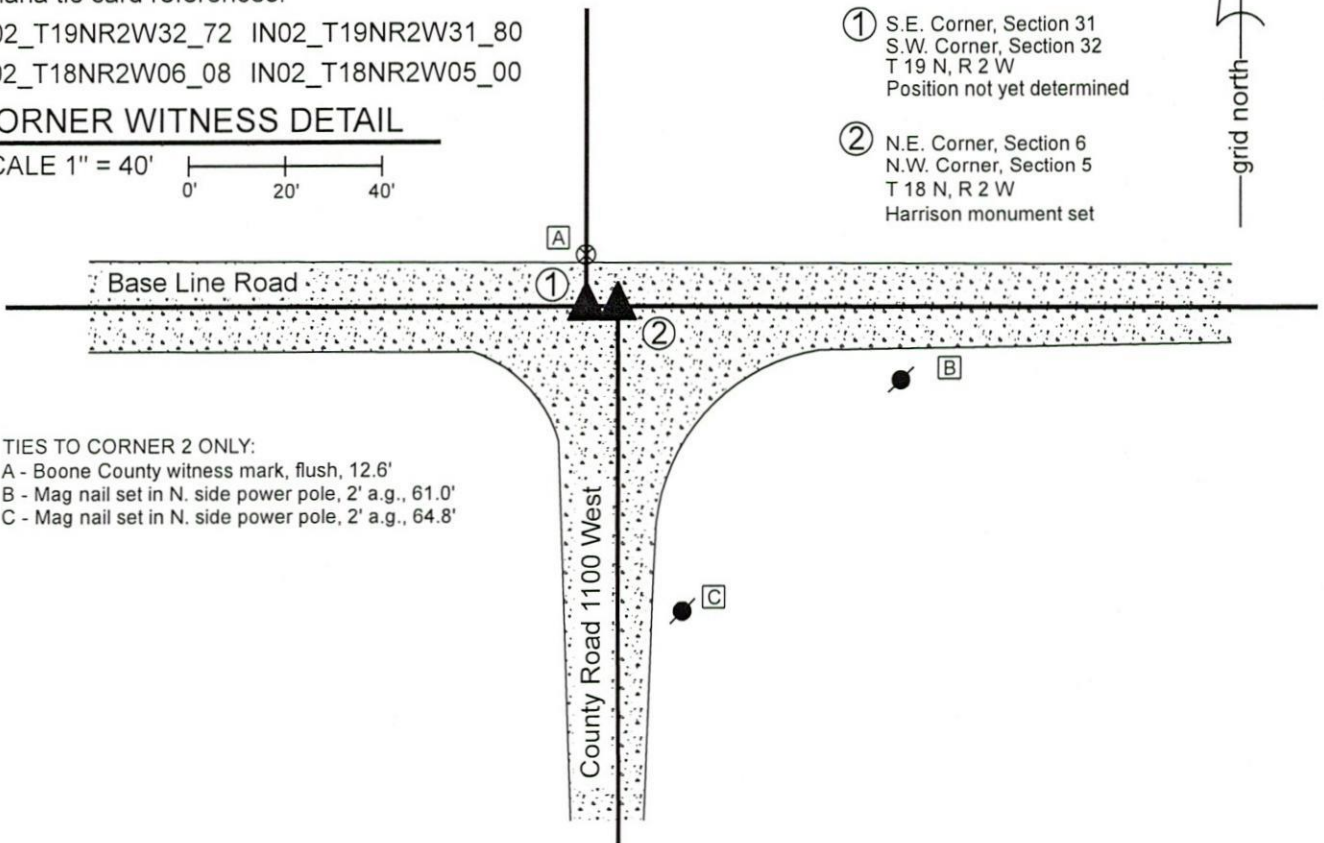
CORNER WITNESS DETAIL

SCALE 1" = 40'



① S.E. Corner, Section 31
S.W. Corner, Section 32
T 19 N, R 2 W
Position not yet determined

② N.E. Corner, Section 6
N.W. Corner, Section 5
T 18 N, R 2 W
Harrison monument set



TIES TO CORNER 2 ONLY:

A - Boone County witness mark, flush, 12.6'

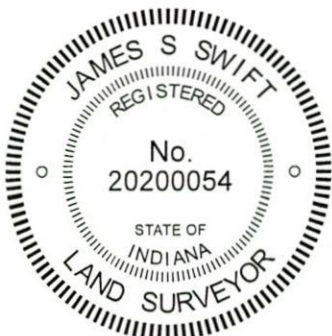
B - Mag nail set in N. side power pole, 2' a.g., 61.0'

C - Mag nail set in N. side power pole, 2' a.g., 64.8'

The Harrison monument at Corner 2 was set over a stone found. The position of Corner 1 has not been fully established.

A BCS tie card dated September 20, 1912 states, with respect to Corner 1, "Located by measurement from rock at quarter section corner in section 6 and by line from quarter section corner on section line between 5 and 6. Set stone 10x10x14 flat, sandy rock, 10x12x6 under." No specific descriptions of Corner 1 were found in the BCS Surveyor's Record beyond the original establishment of the corner as a wood post in 1819. It is noted that the federal closing distance at this corner is 10 links (6.6 feet) east. A BCS tie card dated October, 1971 states, with respect to Corner 2, "Stone located. RRR 6" from stone, S. side."

These corners were both excavated on December 27, 2019. Prior to excavation, a vertical section of railroad rail was found at the intersection of Base Line Road and County Road 1100 West, per the 1971 tie card. Excavation at Corner 2 revealed the lower stone described in the 1912 record at 27 inches deep. The stone measured 12 inches N-S by 10 inches E-W on the top and was buried 10 inches into the clay layer below the road bed. The top, center of the stone was 6 inches north of the position of the railroad rail, removed during excavation. No specific marks were observed etched on the stone. The stone was accepted as being the lower monument called in the 1912 record. Excavation of an area 3 feet east-west by 4 feet north-south, centered on a position 6.6 feet west of the found stone revealed no evidence of Corner 1. The stone found at Corner 2 was left in place and a Harrison monument was set over the top, center of the stone, 6 inches south of the position of the rail, in agreement with the 1971 tie card. The position of Corner 1 will be established on the township line at 6.6 feet west of Corner 2 after the standard corner 1/2 mile east (NW 000-1050) is established.



Kenneth E. Hedge
Kenneth E. Hedge, County Surveyor

James S. Swift
James S. Swift, IN LS 20200054

January 8, 2020

Jefferson Township

Section 31 T19N, R2W	Section 32 T19N, R2W
Section 6 T18N, R2W	Section 5 T18N, R2W

SECTION CORNER RECORD

SW 000-1100

BOONE COUNTY SURVEYOR'S OFFICE

State Plane grid coordinates NAD83 (2011):

Corner 1: North: 1745581.50 East: 3066640.19 (U.S. survey feet)

Corner 2: North: 1745581.47 East: 3066646.79 (U.S. survey feet)

Monument: Harrison monument, 4" disk 'Section Corner'
Depth: Six inches below adjacent road surface

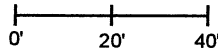
Indiana tie card references:

IN02_T19NR2W32_72 IN02_T19NR2W31_80

IN02_T18NR2W06_08 IN02_T18NR2W05_00

CORNER WITNESS DETAIL

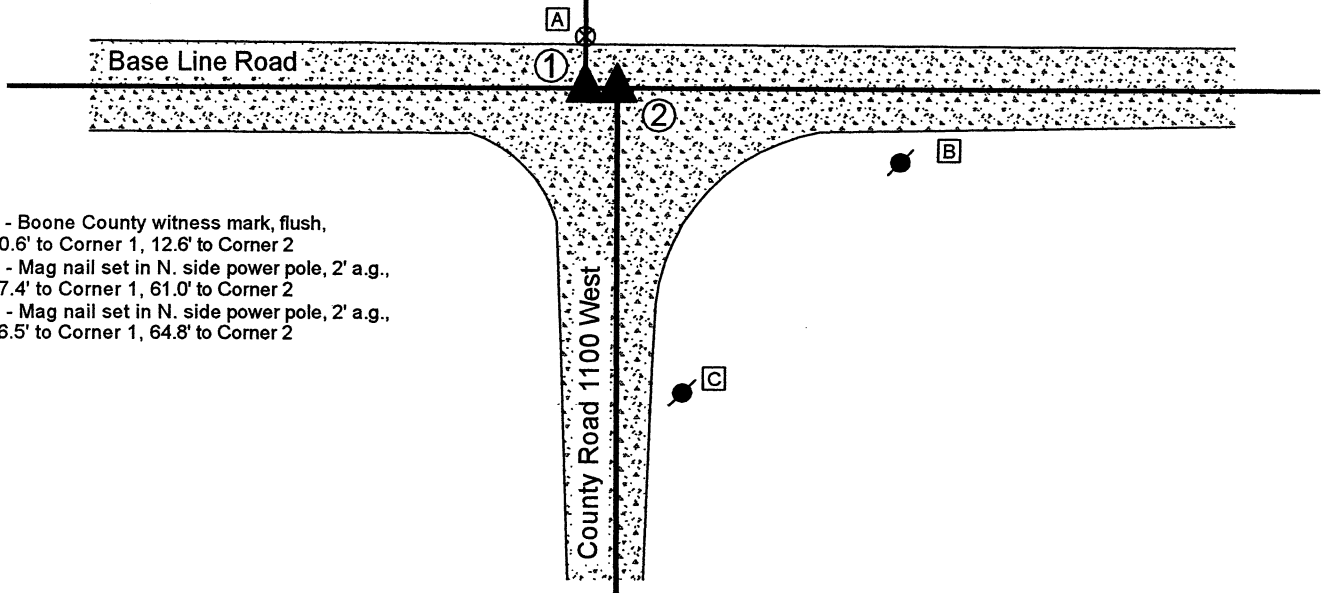
SCALE 1" = 40'



① S.E. Corner, Section 31
S.W. Corner, Section 32
T 19 N, R 2 W
Harrison monument set

② N.E. Corner, Section 6
N.W. Corner, Section 5
T 18 N, R 2 W
Harrison monument set

Distance between corners: 10 links = 6.6'

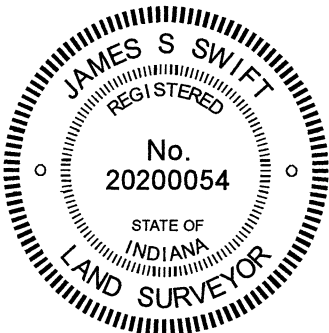


A - Boone County witness mark, flush,
10.6' to Corner 1, 12.6' to Corner 2

B - Mag nail set in N. side power pole, 2' a.g.,
67.4' to Corner 1, 61.0' to Corner 2

C - Mag nail set in N. side power pole, 2' a.g.,
66.5' to Corner 1, 64.8' to Corner 2

The Harrison monument at Corner 2 was set over a stone found. Corner 1 was established on the township line, 6.6 feet west of Corner 2. A BCS tie card dated September 20, 1912 states, with respect to Corner 2, "Located by measurement from rock at quarter section corner in section 6 and by line from quarter section corner on section line between 5 and 6. Set stone 10x10x14 flat, sandy rock, 10x12x6 under." No specific descriptions of Corner 1 were found in the BCS Surveyor's Record beyond the original establishment of the corner as a wood post in 1819. It is noted that the federal closing distance at this corner is 10 links (6.6 feet) east. A BCS tie card dated October, 1971 states, with respect to Corner 2, "Stone located. RRR 6" from stone, S. side." These corners were both excavated on December 27, 2019. Prior to excavation, a vertical section of railroad rail was found at the intersection of Base Line Road and County Road 1100 West, per the 1971 tie card. Excavation at Corner 2 revealed the lower stone described in the 1912 record at 27 inches deep. The stone measured 12 inches N-S by 10 inches E-W on the top and was buried 10 inches into the clay layer below the road bed. The top, center of the stone was 6 inches north of the position of the railroad rail, removed during excavation. No specific marks were observed etched on the stone. The stone was accepted as being the lower monument called in the 1912 record. Excavation of an area 3 feet east-west by 4 feet north-south, centered on a position 6.6 feet west of the found stone revealed no evidence of Corner 1. The stone found at Corner 2 was left in place and a Harrison monument was set over the top, center of the stone, 6 inches south of the position of the rail, in agreement with the 1971 tie card, on December 27, 2019. Corner 1 was established on the westerly prolongation of the township line as defined by Corner 2 and the south quarter corner of Section 32, T19N, R2W, (see BCS Corner NW 000-1050). A Harrison monument was set at this position on December 4, 2020.



Kenneth E. Hedge
Kenneth E. Hedge, County Surveyor

James S. Swift
James S. Swift, IN LS 20200054

January 8, 2020 (revised December 15, 2020)

Jefferson Township

Section 31 T19N, R2W	Section 32 T19N, R2W
Section 6 T18N, R2W	Section 5 T18N, R2W

SECTION CORNER RECORD

BOONE COUNTY SURVEYOR'S OFFICE

SW 000-1150

State Plane grid coordinates NAD83 (2011):

Corner 1: North: 1745585.57 East: 3063982.69 (U.S. survey feet)
 Corner 2: North: 1745585.56 East: 3063989.29 (U.S. survey feet)

Monument: Harrison monument, 4" disk 'Section Corner'
 Depth: Six inches below adjacent road surface

Indiana tie card references:

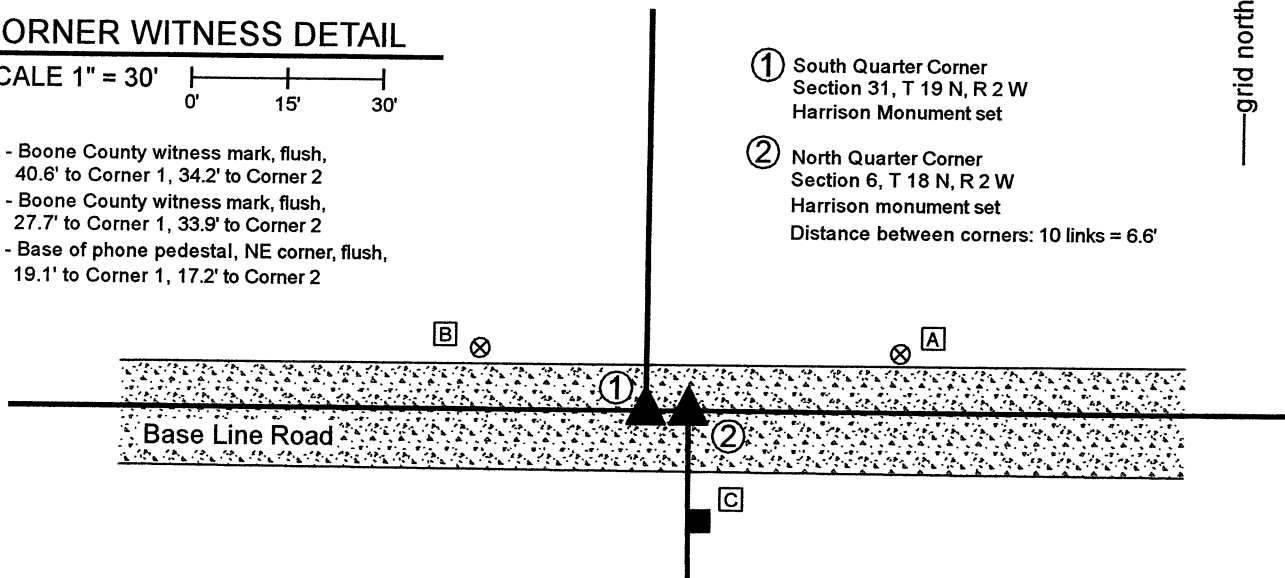
IN02_T19NR2W31_76 IN02_T18NR2W06_04

CORNER WITNESS DETAIL

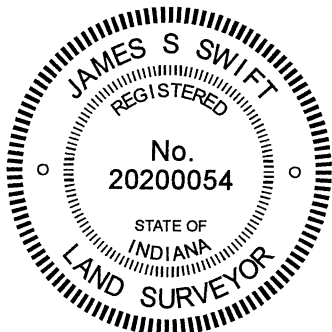
SCALE 1" = 30'

- A - Boone County witness mark, flush, 40.6' to Corner 1, 34.2' to Corner 2
- B - Boone County witness mark, flush, 27.7' to Corner 1, 33.9' to Corner 2
- C - Base of phone pedestal, NE corner, flush, 19.1' to Corner 1, 17.2' to Corner 2

- ① South Quarter Corner Section 31, T 19 N, R 2 W Harrison Monument set
- ② North Quarter Corner Section 6, T 18 N, R 2 W Harrison monument set
Distance between corners: 10 links = 6.6'



The Harrison monument at Corner 2 was set in place of a 5/8 inch rebar found. Corner 1 was established on the township line 6.6 feet west of Corner 2. A BCS record of March 18-19, 1858 states, with respect to Corner 2, "Set Rock 9x18." No specific descriptions of Corner 1 were found beyond the original establishment of that corner as a wood post in 1819. Distances in entries of 1858 and 1910 show the relative position of Corner 2 with respect to the adjacent corners in section 6 and entries of 1858 also show the relative position of Corner 1 with respect to adjacent corners in section 31. None of the entries give specific information about the offsets between the two corners. The original federal notes for section 6 call for the northeast corner of section 6 as closing on the township line 10 links (6.6 feet) east of the standard corner. The same offset should be applied to the north quarter corner of section 6. A BCS tie card dated October, 1971 shows Corner 2 in line with a post to the south but makes no mention of what monument may have been set or found. These corners were excavated on June 5, 2020. Prior to excavation, two monuments were found: A 1/2 inch diameter rebar was found 18 feet west and 2 feet south of a 5/8 inch rebar. The 1/2 inch rebar was substantially further west that would be expected for either corner, based on analysis of the original federal dimensions and the dimensions in the 1858 and 1910 BCS records. The 5/8 inch rebar, though apparently newer and less deteriorated than the 1/2 inch rebar, fit quite well with expected position computed with respect to the previous records, falling between and approximately equidistant from the two computed positions. Excavation around both monuments and much of the area between them did not reveal further evidence of the corners. It is noted that the bottom of the road bed was found well below the level of the surrounding ground and becoming deeper in the vicinity of a small swale slightly west of the corners. It appears that the road bed has been substantially influenced by the swale and that any stone which was present, has likely been removed in excavating the swale and building up the road bed. The 5/8 inch rebar was in the center of the E-W road, in-line with two steel posts found on the south edge of the road. The posts appeared in the field to be former gate posts. The 5/8 rebar was held as marking the closing corner (Corner 2). The rebar was removed and replaced with a Harrison monument in the same position on June 5, 2020. Corner 1 was established 6.6 feet west of Corner 2 on the township line as defined by Corner 2 and the position of the southeast corner of Section 31, T19N, R2W (see BCS Corner NW 000-1100). A Harrison monument was set at this position on December 4, 2020. Corner 1 was originally set as a wood post in 1819. Corner 2 is not an original federal corner.



Kenneth E. Hedge
 Kenneth E. Hedge, County Surveyor

James S. Swift
 James S. Swift, IN LS 20200054

June 30, 2020 (Revised December 15, 2020)

Jefferson Township

Section 31
 T19N, R2W

Section 6
 T18N, R2W

SECTION CORNER RECORD

SW 000-1150

BOONE COUNTY SURVEYOR'S OFFICE

State Plane grid coordinates NAD83 (2011):

Corner 2: North: 1745585.56 East: 3063989.29 (U.S. survey feet)

Corner 2: Harrison monument, 4" disk 'Section Corner'

Depth: Six inches below adjacent road surface

Indiana tie card references:

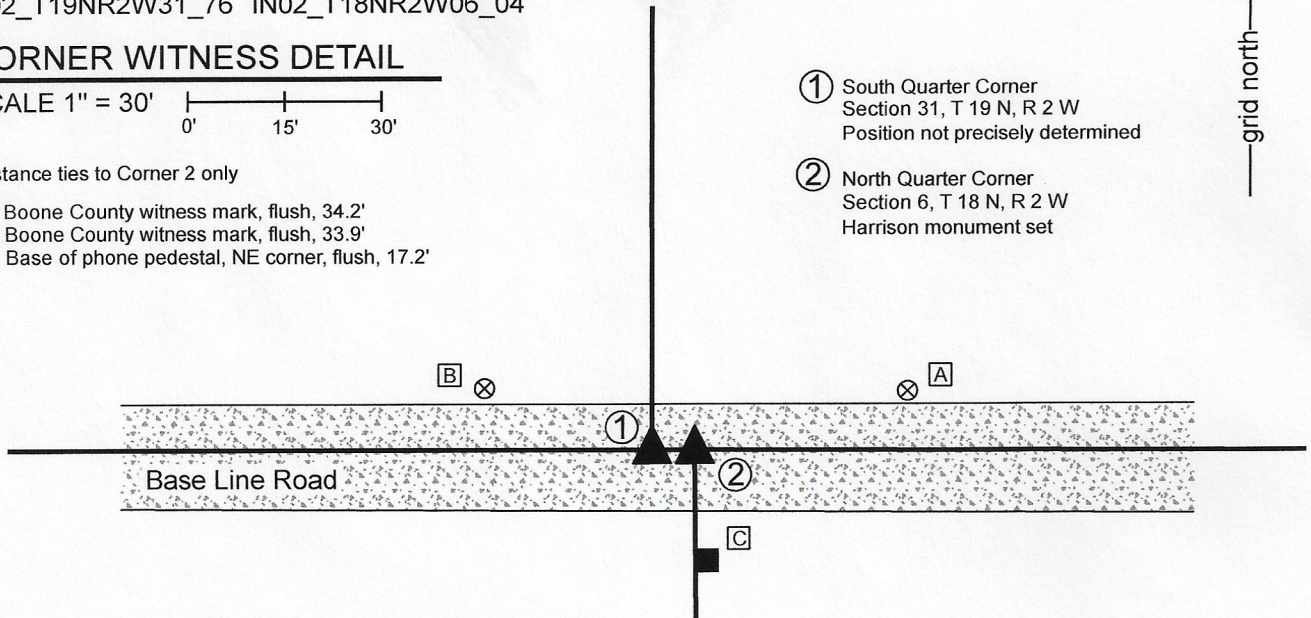
IN02_T19NR2W31_76 IN02_T18NR2W06_04

CORNER WITNESS DETAIL

SCALE 1" = 30'
0' 15' 30'

Distance ties to Corner 2 only

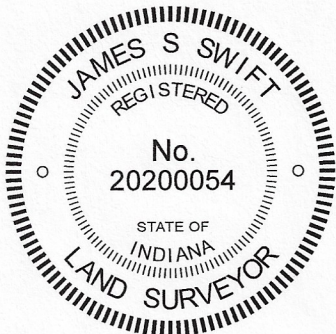
- A - Boone County witness mark, flush, 34.2'
- B - Boone County witness mark, flush, 33.9'
- C - Base of phone pedestal, NE corner, flush, 17.2'



The Harrison monument at Corner 2 was set in place of a 5/8 inch rebar found. No monument was set at Corner 1. A BCS record of March 18-19, 1858 states, with respect to Corner 2, "Set Rock 9x18." No specific descriptions of Corner 1 were found beyond the original establishment of that corner as a wood post in 1819. Distances in entries of 1858 and 1910 show the relative position of Corner 2 with respect to the adjacent corners in section 6 and entries of 1858 also show the relative position of Corner 1 with respect to adjacent corners in section 31. None of the entries give specific information about the offsets between the two corners. The original federal notes for section 6 call for the northeast corner of section 6 as closing on the township line 10 links (6.6 feet) east of the standard corner. The same offset should be applied to the north quarter corner of section 6. A BCS tie card dated October, 1971 shows Corner 2 in line with a post to the south but makes no mention of what monument may have been set or found.

These corners were excavated on June 5, 2020. Prior to excavation, two monuments were found: A 1/2 inch diameter rebar was found 18 feet west and 2 feet south of a 5/8 inch rebar. The 1/2 inch rebar was substantially further west that would be expected for either corner, based on analysis of the original federal dimensions and the dimensions in the 1858 and 1910 BCS records. The 5/8 inch rebar, though apparently newer and less deteriorated than the 1/2 inch rebar, fit quite well with expected position computed with respect to the previous records, falling between and approximately equidistant from the two computed positions. Excavation around both monuments and much of the area between them did not reveal further evidence of the corners. It is noted that the bottom of the road bed was found well below the level of the surrounding ground and becoming deeper in the vicinity of a small swale slightly west of the corners. It appears that the road bed has been substantially influenced by the swale and that any stone which was present, has likely been removed in excavating the swale and building up the road bed. The 5/8 inch rebar was in the center of the E-W road, in-line with two steel posts found on the south edge of the road. The posts appeared in the field to be former gate posts. The 5/8 rebar was held as marking the closing corner (Corner 2). The rebar was removed and replaced with a Harrison monument in the same position. The position of Corner 1 will be established 6.6 feet west of Corner 2 on the township line as defined by Corner 2 and the position of the standard corner 1/2 mile east (see BCS Corner NW 000-1100) after that corner has been monumented.

Corner 1 was originally set as a wood post in 1819. Corner 2 is not an original federal corner.



Kenneth E. Hedge
Kenneth E. Hedge, County Surveyor

James S. Swift
James S. Swift, IN LS 20200054

June 30, 2020

Jefferson Township

Section 31
T19N, R2W

Section 6
T18N, R2W

SECTION CORNER RECORD

SW 000-1200

BOONE COUNTY SURVEYOR'S OFFICE

State Plane grid coordinates NAD83 (2011):

Corner: North: 1745586.36 East: 3061236.80 (U.S. survey feet)

Witness: North: 1745585.63 East: 3061236.80 (U.S. survey feet)

Corner: center, seven inch diameter round wood corner post

Witness: 5/8-inch rebar with red plastic cap stamped

Montgomery Co. Witness Tie

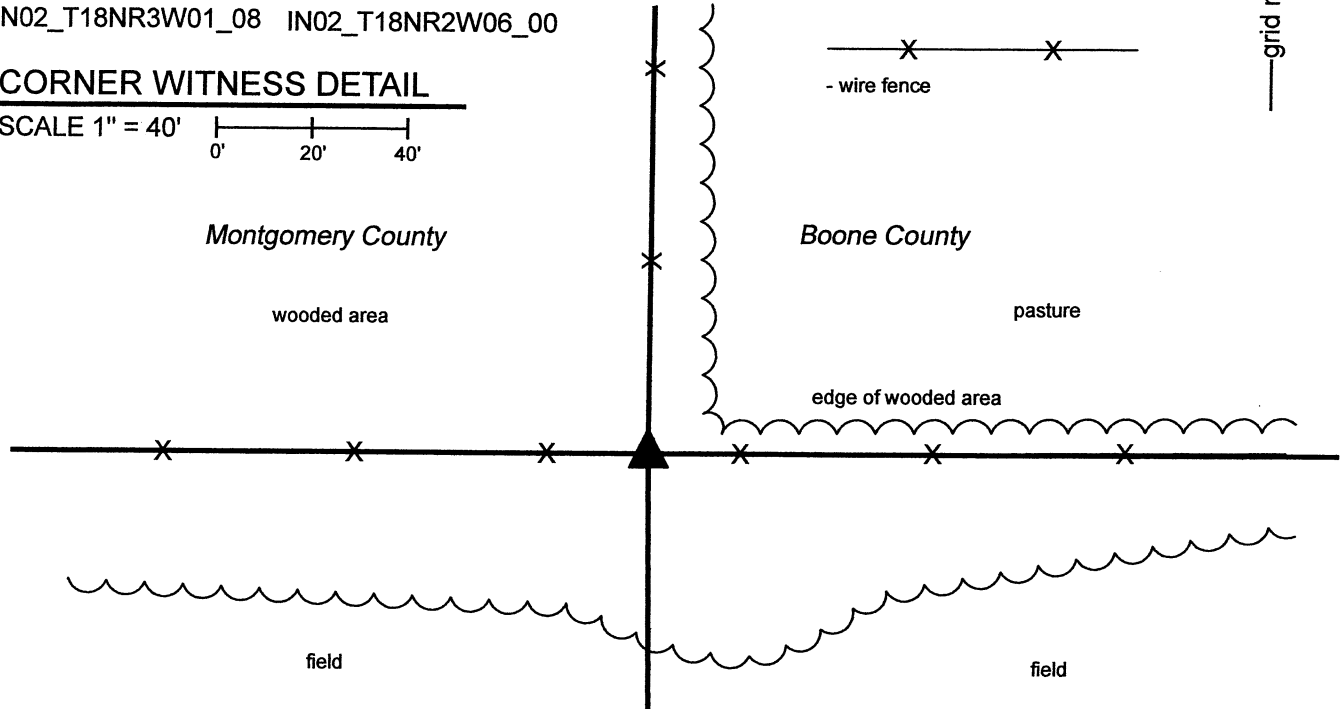
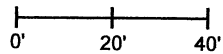
Indiana tie card references:

IN02_T19NR2W31_72 IN02_T19NR3W36_80

IN02_T18NR3W01_08 IN02_T18NR2W06_00

CORNER WITNESS DETAIL

SCALE 1" = 40'



The wood corner post was found in place and held as marking the corner.

A BCS record dated March 16-17, 1858 states, with respect to this corner, "Reestablished by old Wit Tree. Set Rock 12,26." No recent BCS tie cards were found referencing the corner. A Section Corner Dossier sheet provided by the Office of the Montgomery County Surveyor, dated March 17, 2016, shows the corner as a round wood corner post.

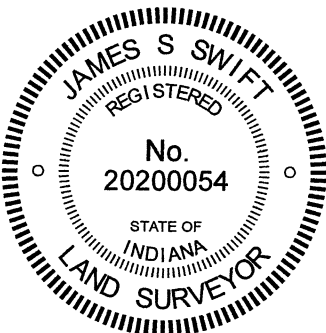
This corner was excavated on November 5, 2020. Several stones were found in the vicinity of the post, none of which matched the dimensions described in the 1858 record or otherwise appeared to represent corner stone monuments. The post is at the intersection of ancient fences to the north and east with relatively more recent fence to the west. It is noted that the post falls near the west edge of a small gully or ditch and that the stone called for in the 1858 record may have been removed by process of erosion associated with the gully.

The Montgomery County dossier shows the post as witnessed by a 5/8-inch rebar with plastic cap stamped "Montgomery Co. Witness Tie. This monument was found in good condition, evidently undisturbed 0.44 of a foot south of the south edge of the post. The rebar is held as a witness and the position of the center of the base of the post is held as the specific position of the corner.

This corner was originally established as a wood post in 1819.

Franklin Township
Montgomery County

Jefferson Township
Boone County



Kenneth E. Hedge
Kenneth E. Hedge, County Surveyor

James S. Swift
James S. Swift, IN LS 20200054
January 12, 2021

Section 36 T19N, R3W	Section 31 T19N, R2W
Section 1 T18N, R3W	Section 6 T18N, R2W

SECTION CORNER RECORD

BOONE COUNTY SURVEYOR'S OFFICE

SW 050-1100

State Plane grid coordinates NAD83 (2011):
 North: 1742608.73 East: 3066667.51 (U.S. survey feet)

Type of monument: Harrison, 4" disk 'Section Corner'
 Depth: Six inches below adjacent road surface

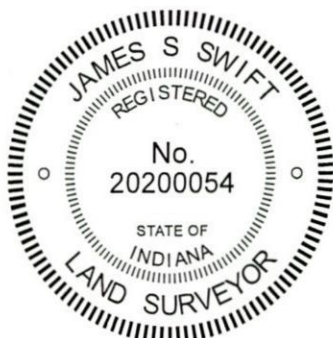
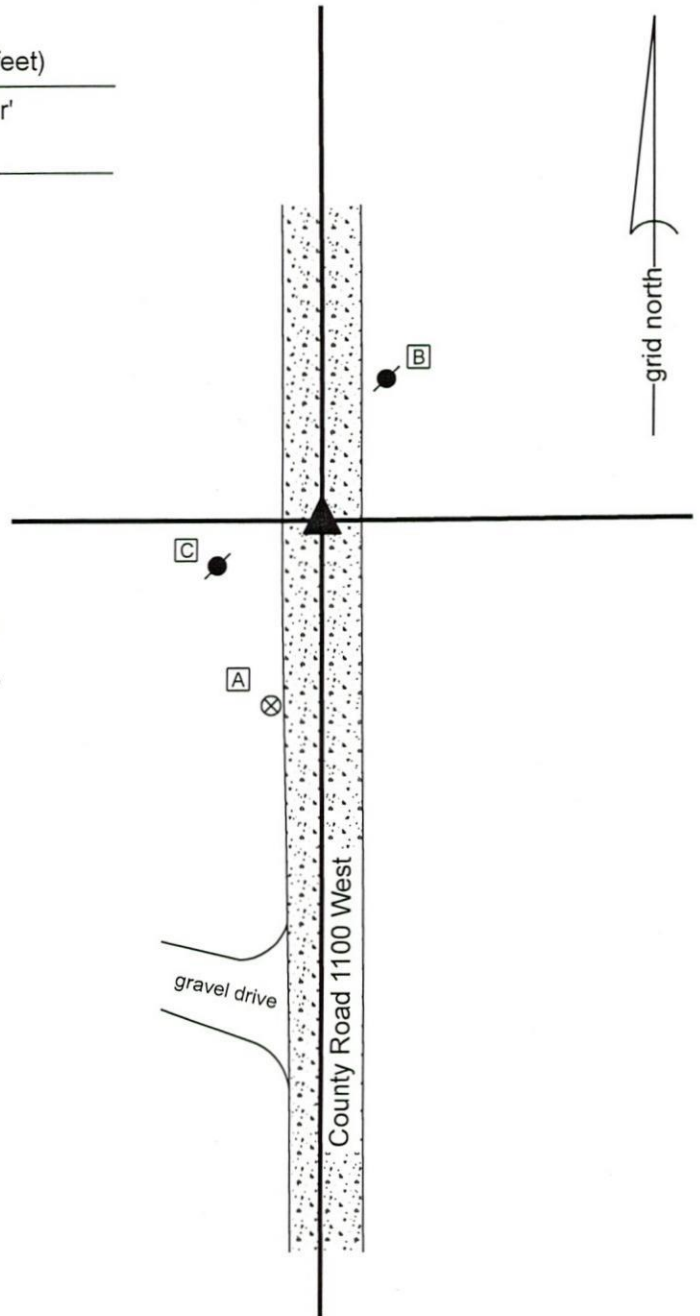
Indiana tie card references:
 IN02_T18NR2W06_44 IN02_T18NR2W05_36

CORNER WITNESS DETAIL

SCALE 1" = 40'

- A - Boone County witness mark, flush, 39.6'
- B - Mag nail set in S. side power pole, 2' a.g., 32.2'
- C - Mag nail set in E. side power pole, 2' a.g., 23.6'

The Harrison monument was set in place of a stone found.
 A BCS record of March 24,25, 1857 states, with respect to this corner, "Reest. Set Rock 12x26." A BCS tie card dated October 9, 1971 states "No stone - RRR put in."
 This corner was excavated on December 27, 2019. Prior to excavation, a 5/8 inch diameter rebar was found in the center of the north-south road, approximately in-line with a tree line to the west. Excavation revealed the stone described in the 1857 record at 4 inches deep, slightly east of the rebar. The top of the stone was 5 inches x 5 inches. The stone was removed and measured to have been 26 inches tall by 12 inches N-S by 10 inches E-W. It had been embedded in the clay layer below the road, protruding approximately 4 inches into the bottom of the road bed. No specific marks were found etched on the stone. No railroad rail (RRR) was found. The stone was accepted as being the same monument described in the 1857 record and was held as marking the corner. A Harrison monument was set in the same horizontal position as the top, center of the stone as found. The rebar, removed during excavation, had been 1.1 foot west of the center of the top of the stone.
 This corner was originally established as a wood post in 1820.



Kenneth E. Hedge
 Kenneth E. Hedge, County Surveyor

James S. Swift
 James S. Swift, IN LS 20200054
 January 8, 2020

Jefferson Township

Section 6 T18N, R2W	Section 5 T18N, R2W
------------------------	------------------------

SECTION CORNER RECORD

SW 050-1200

BOONE COUNTY SURVEYOR'S OFFICE

State Plane grid coordinates NAD83 (2011):

Corner 1: North: 1742743.17 East: 3061265.17 (U.S. survey feet)

Corner 2: North: 1742619.21 East: 3061266.31 (U.S. survey feet)

Corner 1: Wood Corner Post, standing

Corner 2: Harrison, 4" disk 'Section Corner'

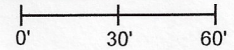
3" above surrounding ground

Indiana tie card references:

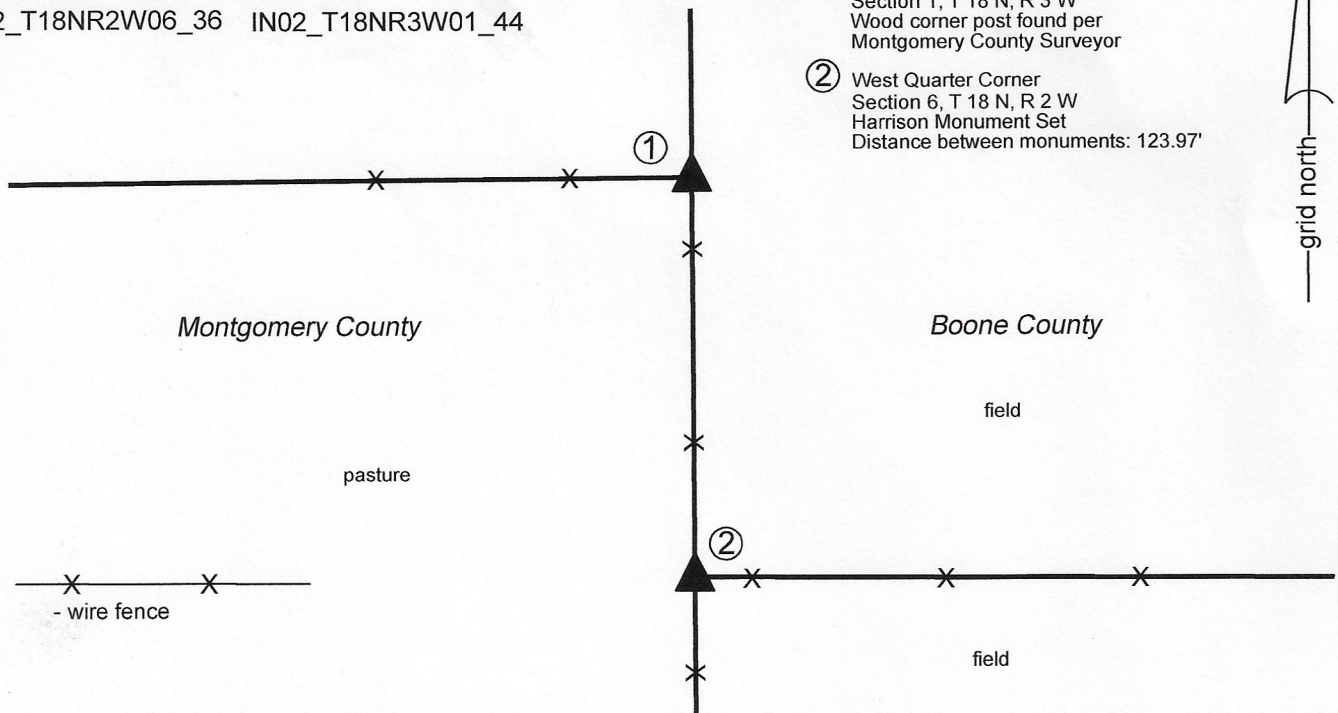
IN02_T18NR2W06_36 IN02_T18NR3W01_44

CORNER WITNESS DETAIL

SCALE 1" = 60'

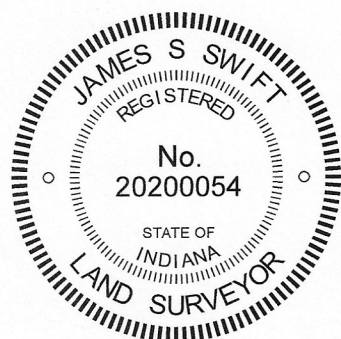


- ① East Quarter Corner
Section 1, T 18 N, R 3 W
Wood corner post found per
Montgomery County Surveyor
- ② West Quarter Corner
Section 6, T 18 N, R 2 W
Harrison Monument Set
Distance between monuments: 123.97'



The Harrison monument at Corner 2 was set in place of a stone found. A BCS record of March 18-19, 1858, states, with respect to Corner 2, "Set a rock 12x12." No recent BCS tie cards were found referencing the corner. A Section Corner Dossier sheet dated May 25, 2017 provided by the Office of the Montgomery County Surveyor shows Corner 1 as a seven inch diameter round wood post.

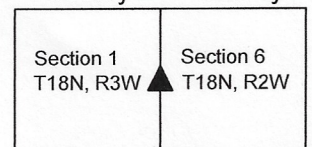
Corner 2 was excavated on November 2 to 4, 2020. The round wood corner post referenced as Corner 1 was found in good condition. Substantial evidence of Corner 2 was found in the form of the intersection of a north-south wire fence and a wire fence to the east. No corner post was observed standing above-ground at the intersection of the fences. The position of the fence intersection fit well with the relative position of Corner 1 and the record federal range line offset for the southwest corner of section 6, being 190 links or 125.4 feet. Excavation in the immediate vicinity of the fence intersection revealed a stone found at 3 inches below grade, adjacent to fragments of a cedar post, presumably an old corner post, found beginning at 9 inches deep. The stone measured 8 inches N-S by 7 inches E-W by 6 inches tall. This is not the stone called in the 1858 record, but the stone bore the characteristics of a stone purposely set to mark the corner, being oriented in cardinal directions with a distinct high point at the top center. The stone fell precisely along the range line as defined by the post at Corner 1 and a Montgomery County rebar at the southeast corner of Section 1, T18N, R3W and also fit precisely with the existing fence to the east. The stone was accepted as the best available evidence of the corner and was held as the marking corner. The stone was removed and a Harrison monument was set in its place, partially over the found remains of the cedar post, on November 4, 2020.



Kenneth E. Hedge
Kenneth E. Hedge, County Surveyor

James S. Swift
James S. Swift, IN LS 20200054
November 23, 2020

Walnut Township Montgomery County	Jefferson Township Boone County
--	--



SECTION CORNER RECORD

BOONE COUNTY SURVEYOR'S OFFICE

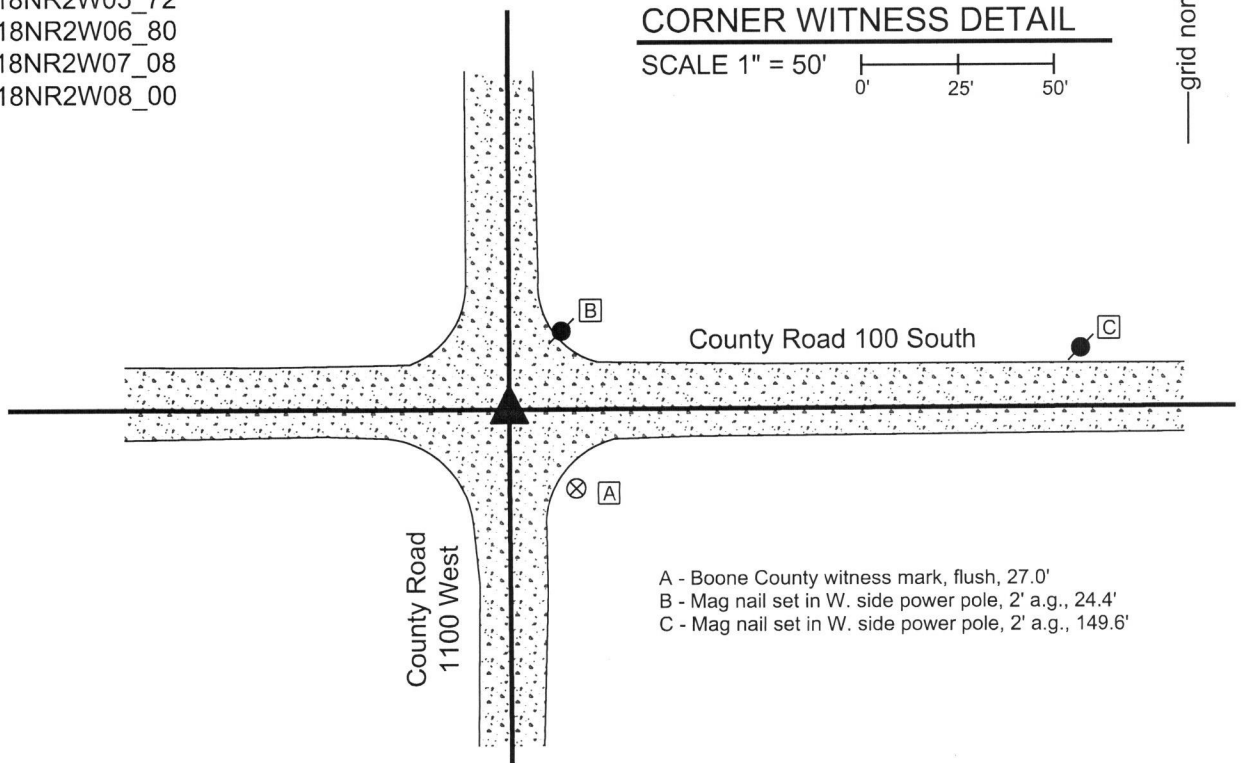
SW 100-1100

State Plane grid coordinates NAD83 (2011):
 North: 1739969.79 East: 3066677.34 (U.S. survey feet)

Type of monument: Harrison, 4" disk 'Section Corner'
 Depth: Six inches below adjacent gravel road surface.

Indiana tie card references:

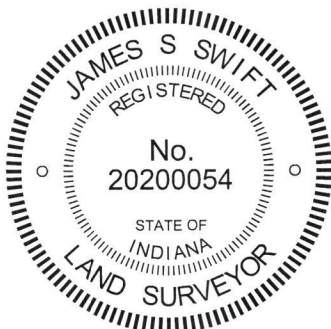
- IN02_T18NR2W05_72
- IN02_T18NR2W06_80
- IN02_T18NR2W07_08
- IN02_T18NR2W08_00



The Harrison monument was set over a stone found. No specific descriptions of this corner were found in the BCS Surveyor's Record, though the corner is mentioned as the terminal point for measurements in entries of 1835, 1897 and 1898, indicating that some monument was present from which to measure at those times. In particular, the 1897 and 1898 measurement references indicate the presence of a known monument at the corner. A BCS tie card dated May 19, 1994 shows the corner as a rebar with no reference to source or origin.

This corner was excavated on April 12, 2019. Prior to excavation, a 5/8 inch diameter rebar was found slightly below the surface of the road. The rebar was bent substantially, clearly disturbed in its position. A 1/2 inch diameter rebar was found slightly south of the 5/8 inch rebar. Excavation revealed a stone found at 11 inches deep, south and west of the rebars. The top 10 inches of the stone were exposed, as which point it measured 4 inches N-S by 8 inches E-W. With the top 10 inches exposed, the stone was entirely stable in the ground, indicating that it is yet substantially taller. The stone was oriented in cardinal directions and the south edge of the stone is flat and vertical. No specific marks were observed on the stone. It is fully embedded in the clay layer below the road, protruding 1 inch into the bottom of the road bed. The stone has a clear a distinct high point at the top, center. The stone was accepted as the best available evidence of the original position of the corner and the top, center high point was held as the specific position of the corner. The top 10 inches of the stone were encased in concrete and a Harrison monument, broken off at 4 inches, was set directly over the high point. The 5/8 inch rebar, removed during excavation, had been approximately 1 foot east and 2 feet north of the stone. This monument is most likely the same monument as is called in the 1994 tie card, though insufficient distance tie references were available to positively confirm this fact.

This corner was originally established as a wood post in 1820.



Kenneth E. Hedge
 Kenneth E. Hedge, County Surveyor

James S. Swift
 James S. Swift, IN LS 20200054
 April 30, 2019

Jefferson Township

Section 6 T18N, R2W	Section 5 T18N, R2W
Section 7 T18N, R2W	Section 8 T18N, R2W

SECTION CORNER RECORD

SW 100-1150

BOONE COUNTY SURVEYOR'S OFFICE

State Plane grid coordinates NAD83 (2011):

North: 1739978.00 East: 3064035.90 (U.S. survey feet)

Type of monument: Harrison, 4" disk 'Section Corner'

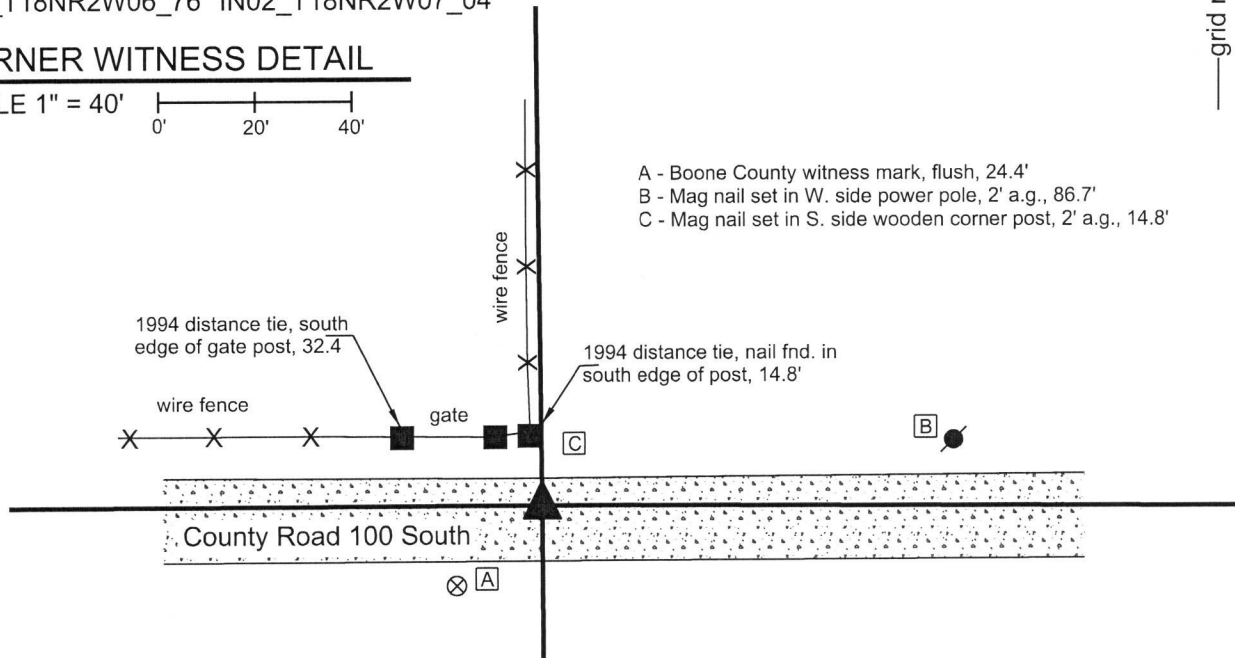
Depth: Six inches below adjacent gravel road surface

Indiana tie card references:

IN02_T18NR2W06_76 IN02_T18NR2W07_04

CORNER WITNESS DETAIL

SCALE 1" = 40'



- A - Boone County witness mark, flush, 24.4'
- B - Mag nail set in W. side power pole, 2' a.g., 86.7'
- C - Mag nail set in S. side wooden corner post, 2' a.g., 14.8'

1994 distance tie, south edge of gate post, 32.4'

1994 distance tie, nail fnd. in south edge of post, 14.8'

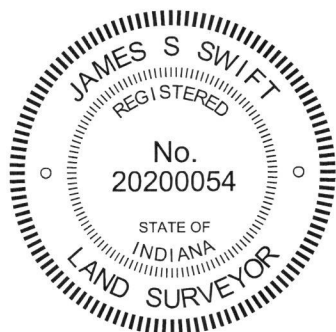
County Road 100 South

The Harrison monument was set in the position of a railroad spike, as perpetuated from a BCS tie card dated June 27, 1994.

No specific descriptions of this corner were found in the BCS Surveyor's Record beyond the original establishment of the corner as a wood post in 1820 and a measurement reference in an entry of 1834.

The 1994 tie card clearly demonstrates that the corner was set in the approximate center of the road, in-line with a fence and corner post to the south and slightly east of a fence to the north.

Excavation was performed at this corner on April 12, 2019. Prior to excavation, no metal monuments were found marking the corner. Two distance tie references shown on the 1994 tie card were found. The position of the corner was established by resection from the two remaining ties. This placed the corner approximately 2.5 feet east of the wood post and fence on the north side of the road, in agreement with the graphical representation on the 1994 tie card. The post and fence to the south are no longer present. Excavation of an area extending 2 feet north, 4 feet east, 3 feet south and 5 feet west of the resected position of the corner revealed no further evidence. It was observed that the road bed is only 7 inches thick in this vicinity. Any stones which may have been present previously may well have been destroyed by grading equipment on this thin road bed. The railroad spike shown on the 1994 tie card was not found. It was observed that the post and fence to the north do not appear to be ancient. No statement of age of evidence is mentioned on the 1994 tie card, but given that the corner was held as being in-line with the fence to the south, it is considered likely that the fence to the south appeared more ancient and was held as the dominant evidence on that count. No physical evidence was found which contradicted the representation of the corner on the 1994 tie card. The position of the corner as resected from the two remaining 1994 distance ties was held. A Harrison monument was set at this position. This corner was originally established as a wood post in 1820. It is noted that this corner is a quarter corner immediately east of a range line. The position of the corner works reasonably well with the proportional relationship of the corners to the east and west with respect to the distances reported in the original federal notes.



Kenneth E. Hedge
Kenneth E. Hedge, County Surveyor

James S. Swift
James S. Swift, IN LS 20200054
April 30, 2019

Jefferson Township

Section 6
T18N, R2W

Section 7
T18N, R2W

SECTION CORNER RECORD

SW 100-1200

BOONE COUNTY SURVEYOR'S OFFICE

State Plane grid coordinates NAD83 (2011):

Corner 1: North: 1740094.90 East: 3061289.53 (U.S. survey feet)

Corner 2: North: 1739969.61 East: 3061290.63 (U.S. survey feet)

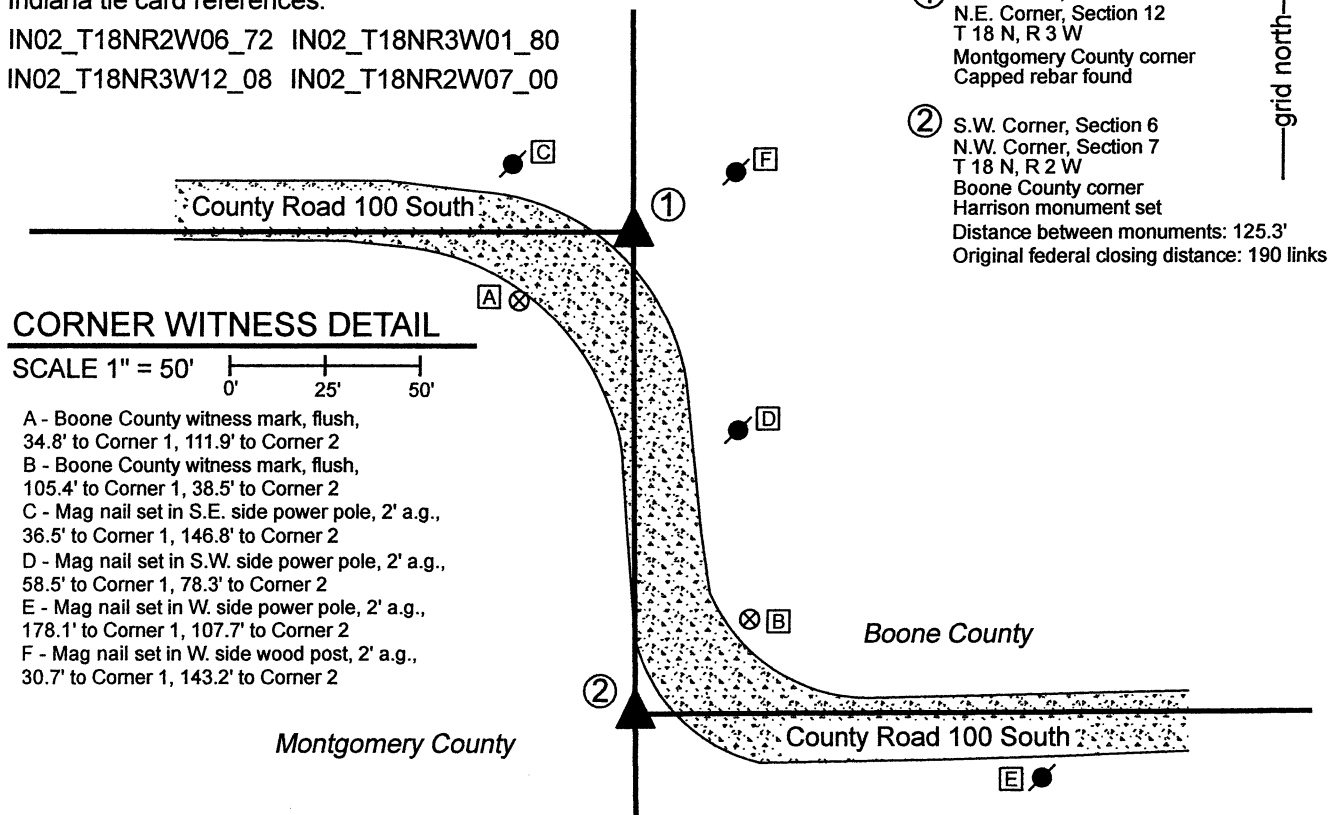
Corner 1: 5/8" rebar with aluminum cap stamped
'Montgomery County Surveyor' 1 inch below adjacent grade

Corner 2: Harrison, 4" disk 'Section Corner', flush

Indiana tie card references:

IN02_T18NR2W06_72 IN02_T18NR3W01_80

IN02_T18NR3W12_08 IN02_T18NR2W07_00



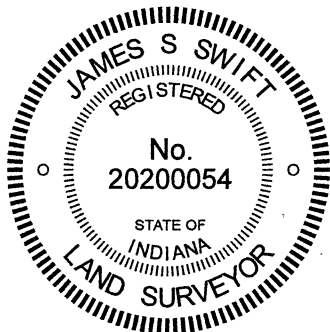
- ① S.E. Corner, Section 1
N.E. Corner, Section 12
T 18 N, R 3 W
Montgomery County corner
Capped rebar found
- ② S.W. Corner, Section 6
N.W. Corner, Section 7
T 18 N, R 2 W
Boone County corner
Harrison monument set
Distance between monuments: 125.3'
Original federal closing distance: 190 links

CORNER WITNESS DETAIL

SCALE 1" = 50'

- A - Boone County witness mark, flush, 34.8' to Corner 1, 111.9' to Corner 2
- B - Boone County witness mark, flush, 105.4' to Corner 1, 38.5' to Corner 2
- C - Mag nail set in S.E. side power pole, 2' a.g., 36.5' to Corner 1, 146.8' to Corner 2
- D - Mag nail set in S.W. side power pole, 2' a.g., 58.5' to Corner 1, 78.3' to Corner 2
- E - Mag nail set in W. side power pole, 2' a.g., 178.1' to Corner 1, 107.7' to Corner 2
- F - Mag nail set in W. side wood post, 2' a.g., 30.7' to Corner 1, 143.2' to Corner 2

The Harrison monument at Corner 2 was set in place of a 1/2 inch diameter rebar found. No specific descriptions of this corner were found in the BCS Surveyor's Record beyond the original establishment of the corner as a wood post in 1820. No recent BCS tie cards were found referencing this corner. A 'Section Corner Dossier' sheet provided by the Montgomery County Surveyor shows Corner 1 as being a rebar with metal cap set with respect to the position of the rebar found at Corner 2. Excavation was performed at this corner on July 14, 2021. Prior to excavation, both rebars mentioned in the Montgomery County dossier were found. Excavation of an area 8 feet north-south by 6 feet east-west centered on the found 1/2 inch rebar revealed no further evidence of the corner. The position of the rebar fit well with the evidence of the county road to the east and is accepted as the best available evidence of the corner. The rebar is known to have been held as marking the corner by previous private surveys and was held as marking Corner 2 when Montgomery County established Corner 1. The position of the found rebar was held as marking the corner. The rebar was replaced with a Harrison Monument on July 14, 2021.



Kenneth E. Hedge
Kenneth E. Hedge, County Surveyor

James S. Swift
James S. Swift, IN LS 20200054
August 9, 2021

Walnut Township
Montgomery County

Jefferson Township
Boone County

Section 1 T18N, R3W	Section 6 T18N, R2W
Section 12 T18N, R3W	Section 7 T18N, R2W