

# SECTION CORNER RECORD

# NW 300-950

## BOONE COUNTY SURVEYOR'S OFFICE

State Plane grid coordinates NAD83 (2011):  
North: 1761397.99 East: 3074566.54 (U.S. survey feet)

Type of monument: Harrison, 4" disk 'Section Corner'  
Depth: Two inches above surrounding ground

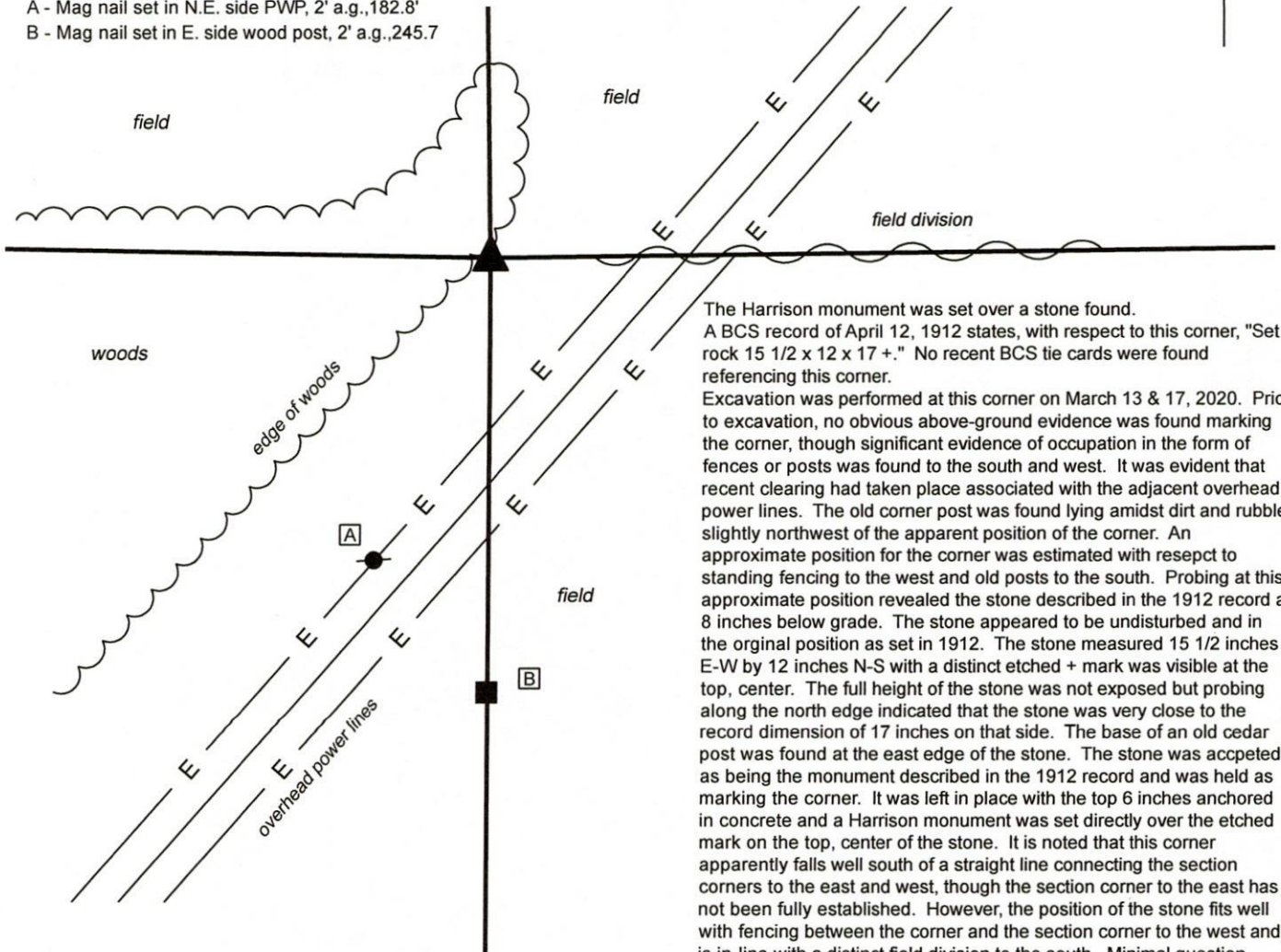
Indiana tie card references:  
IN02\_T19NR2W16\_76 IN02\_T19NR2W21\_04

### CORNER WITNESS DETAIL

SCALE 1" = 100'  
0' 50' 100'



- A - Mag nail set in N.E. side PWP, 2' a.g., 182.8'
- B - Mag nail set in E. side wood post, 2' a.g., 245.7



The Harrison monument was set over a stone found. A BCS record of April 12, 1912 states, with respect to this corner, "Set rock 15 1/2 x 12 x 17 +." No recent BCS tie cards were found referencing this corner.

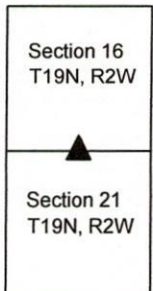
Excavation was performed at this corner on March 13 & 17, 2020. Prior to excavation, no obvious above-ground evidence was found marking the corner, though significant evidence of occupation in the form of fences or posts was found to the south and west. It was evident that recent clearing had taken place associated with the adjacent overhead power lines. The old corner post was found lying amidst dirt and rubble slightly northwest of the apparent position of the corner. An approximate position for the corner was estimated with respect to standing fencing to the west and old posts to the south. Probing at this approximate position revealed the stone described in the 1912 record at 8 inches below grade. The stone appeared to be undisturbed and in the original position as set in 1912. The stone measured 15 1/2 inches E-W by 12 inches N-S with a distinct etched + mark was visible at the top, center. The full height of the stone was not exposed but probing along the north edge indicated that the stone was very close to the record dimension of 17 inches on that side. The base of an old cedar post was found at the east edge of the stone. The stone was accepted as being the monument described in the 1912 record and was held as marking the corner. It was left in place with the top 6 inches anchored in concrete and a Harrison monument was set directly over the etched mark on the top, center of the stone. It is noted that this corner apparently falls well south of a straight line connecting the section corners to the east and west, though the section corner to the east has not been fully established. However, the position of the stone fits well with fencing between the corner and the section corner to the west and is in-line with a distinct field division to the south. Minimal question exists as to whether this is the position established in 1912. This corner was originally established as a wood post in 1829.



*Kenneth E. Hedge*  
Kenneth E. Hedge, County Surveyor

*James S. Swift*  
James S. Swift, IN LS 20200054  
March 23, 2020

Jefferson Township





# SECTION CORNER RECORD

# NW 500-1050

## BOONE COUNTY SURVEYOR'S OFFICE

State Plane grid coordinates NAD83 (2011):

North: 1772098.28 East: 3069286.57 (U.S. survey feet)

Type of monument: Harrison, 4" disk 'Section Corner'

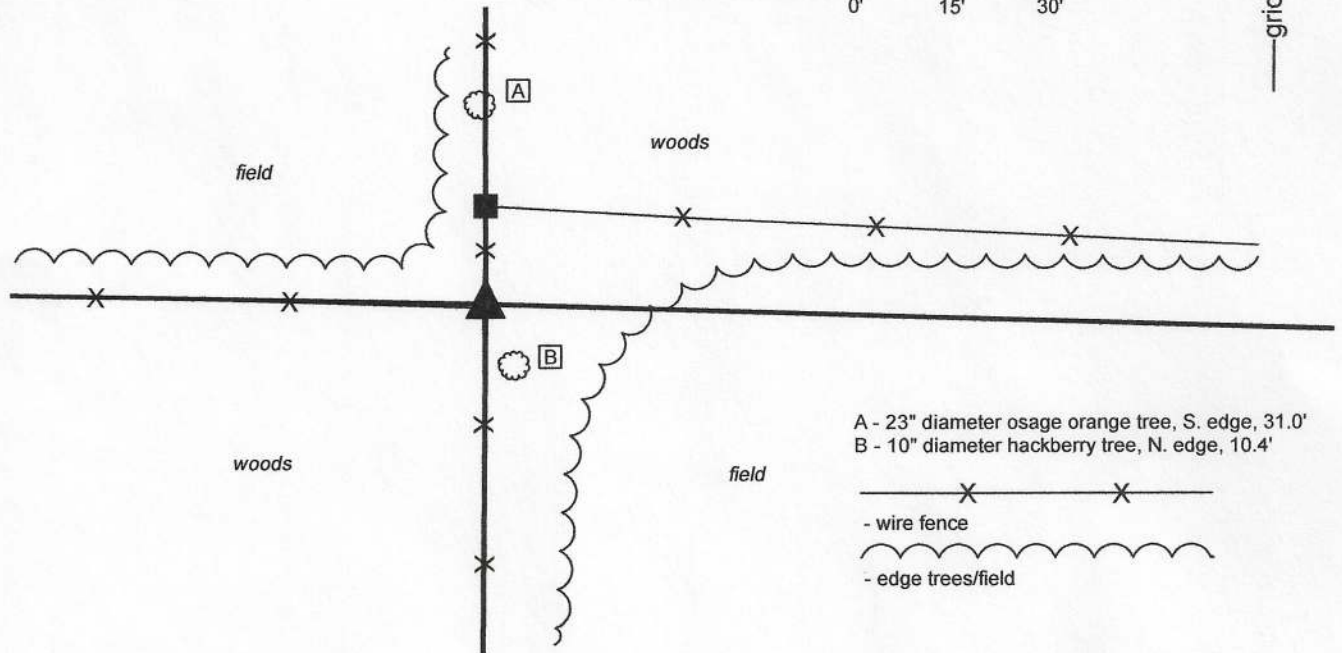
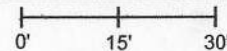
Depth: Two inches above adjacent ground

Indiana tie card references:

IN02\_T19NR2W05\_76 IN02\_T19NR2W08\_04

### CORNER WITNESS DETAIL

SCALE 1" = 30'



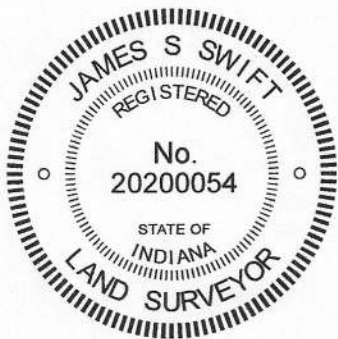
A - 23" diameter osage orange tree, S. edge, 31.0'  
 B - 10" diameter hackberry tree, N. edge, 10.4'

— x — x —  
 - wire fence  
 ~~~~~  
 - edge trees/field

The Harrison monument was set in place of a stone found.

No specific descriptions of this corner were found in the BCS Surveyor's Record beyond the original establishment of the corner as a wood post in 1829. No recent BCS tie cards were found referencing the corner. A survey recorded as Instrument 0209862 in the Office of the Boone County Recorder shows the corner as a wood headpost.

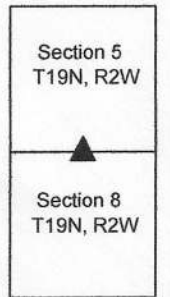
This corner was excavated on April 7, 2020. Prior to excavation, a wood corner post in the same position as is shown on the aforementioned survey was found at the intersection of ancient fences to the north, south and west. The post had corner braces to the south and west and wire from a former brace to the north. Another, evidently much newer post is situated 15 feet further north, with fencing to the east. Neither the post nor the fencing to the east appear to be particularly old or substantial. It is noted that the older post to the south is north of a straight line between the apparent section corners to the east and west, hence the newer fence to the north does not appear to be evidence of the corner. Excavation around the older post revealed a stone found flush with the ground, near the northeast corner of the post. The top of the stone was flat and horizontal, being 8 inches E-W by 10 inches N-S at the top. The stone was close to the post but not touching it and did not appear to be acting as a brace rock for the post. The stone was oriented in cardinal directions with the north, south and west edges vertical. The east edge sloped down to a total E-W dimension of 21 inches. The stone was removed and found to be 16 inches tall. The stone appeared to represent a monument purposely set to mark the corner and was accepted as the best available evidence of the corner. A Harrison monument was set in the position of the center of the top of the stone as originally found. The Harrison monument is situated at the northeast edge of the wood corner post, two inches above the adjacent ground.



*Kenneth E. Hedge*  
 Kenneth E. Hedge, County Surveyor

*James S. Swift*  
 James S. Swift, IN LS 20200054  
 June 3, 2020

Sugar Creek Township



# SECTION CORNER RECORD

NW 550-1000

## BOONE COUNTY SURVEYOR'S OFFICE

State Plane grid coordinates NAD83 (2011):

North: 1774683.83 East: 3071977.34 (U.S. survey feet)

Type of monument: Harrison, 4" disk 'Section Corner'

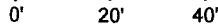
Depth: Six inches below adjacent gravel road surface

Indiana tie card references:

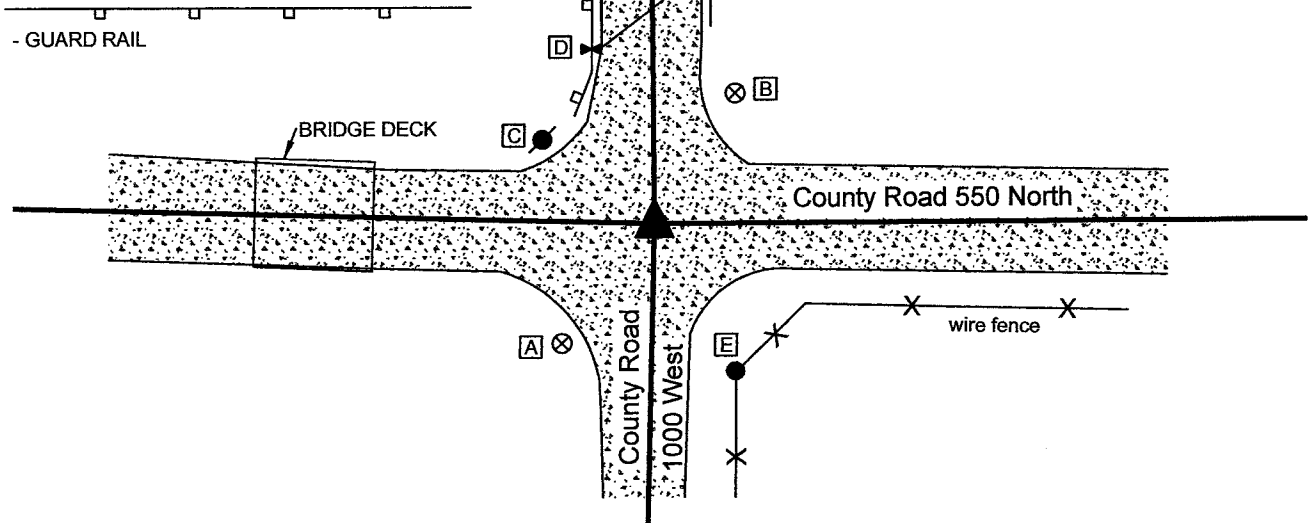
IN02\_T19NR2W05\_44 IN02\_T19NR2W04\_36

### CORNER WITNESS DETAIL

SCALE 1" = 40'

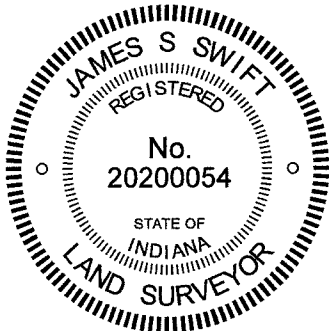


- A - Boone County witness mark, flush, 31.3'
- B - Boone County witness mark, flush, 31.9'
- C - Mag nail set in S.E. side power pole, 2' a.g., 29.4'
- D - Chisel mark in guard rail post, 38.9'
- E - Mag nail set in W. side wood corner post, 2' a.g., 34.9'



The Harrison monument was set in place of a railroad rail and a rebar found. No specific descriptions of this corner were found in the BCS Surveyor's Record beyond the original establishment of the corner as a wood post in 1829. The corner is mentioned as the terminal point of measurements in a record from 1895. The corner is shown on a BCS tie card dated October 8, 1971 which states "No stone." The corner is shown as a railroad rail on a survey by Jerry L. Carter recorded as Instrument 0217185 and is shown as a 5/8-inch diameter rebar found on surveys by Jonathon E. Hause recorded in Survey Book 21, pages 67-68 and Survey Book 21, pages 82-83, all as recorded in the Office of the Boone County Recorder.

This corner was excavated on August 6, 2021. Prior to excavation, a rebar with a yellow plastic cap (markings illegible) was found at 6 inches deep at the intersection of the two county roads. Excavation revealed a vertical section of railroad rail at 12 inches deep. The rebar had been set such that the top of the rebar was directly over the top, center of the rail. Further excavation revealed no additional evidence of the corner. This corner falls in an area of fill associated with bridges over a small waterway to the north and west of the corner, Though the 1971 tie card makes no mention of the rail, it is known to have been a standard practice of BCS field crews from that era to set a vertical section of rail to mark the corner, and the statement of "no stone" is interpreted to indicate that no stone was found and a rail was set. The rail and rebar fit with the local evidence of the corner, being at the approximate center of the intersection of the two county roads. These monuments were accepted as marking the position held as the corner in 1971 and accepted as the best available evidence of the original position of the corner. The rail and rebar were both removed during excavation and replaced with a Harrison monument in the same position.



*Kenneth E. Hedge*  
 Kenneth E. Hedge, County Surveyor

*James S. Swift*  
 James S. Swift, IN LS 20200054  
 August 20, 2021

Sugar Creek Township

