

SECTION CORNER RECORD

NE 500-100

BOONE COUNTY SURVEYOR'S OFFICE

State Plane grid coordinates NAD83 (CORS96):

North: 1772060.68 East: 3129821.84 (U.S. survey feet)

Type of monument: Harrison, 4" disk 'Section Corner'

Depth: six inches below adjacent gravel road surface

Indiana tie card references:

IN02_T19NR1E06_80 IN02_T19NR1E05_72

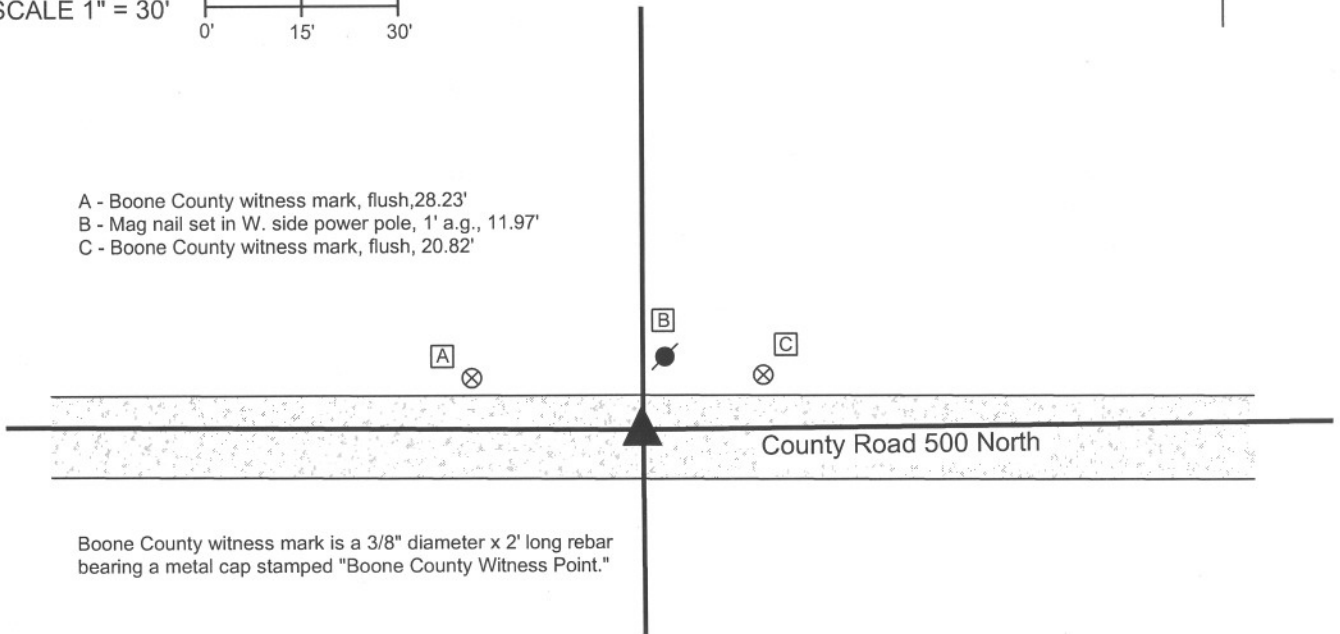
IN02_T19NR1E07_08 IN02_T19NR1E08_00



CORNER WITNESS DETAIL

SCALE 1" = 30'

- A - Boone County witness mark, flush, 28.23'
- B - Mag nail set in W. side power pole, 1' a.g., 11.97'
- C - Boone County witness mark, flush, 20.82'



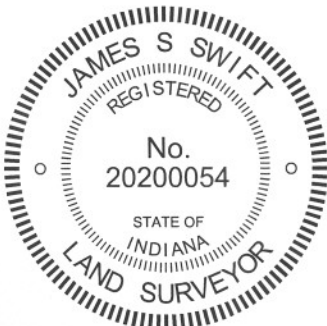
Boone County witness mark is a 3/8" diameter x 2' long rebar bearing a metal cap stamped "Boone County Witness Point."

The harrison monument was set in place of a harrison monument found.

No specific descriptions of this corner were found in the BCS Surveyor's Record. A BCS tie card dated September 29, 2005 shows the corner as a harrison monument with no documentation of source.

This corner was excavated on June 19, 2012. Prior to excavation a harrison monument was found which fit with the 2005 distance ties. Excavation of an area extending 4 feet north, 5 feet east, 4 feet south and 4 feet west of the harrison monument revealed no further evidence of the corner. The road bed is only 6 inches in this area. The harrison monument fit with local evidence in the form of the center of the county road to the east and west and the broken-off wood post on the north side of the road. The position of the found harrison was held as the corner. The found harrison monument was removed during excavation and replaced with a new harrison in the same position.

This corner was originally established as a wood post in June, 1822.



Kenneth E. Hedge, County Surveyor

James S. Swift, IN LS 20200054
January 15, 2013

Clinton Township

Section 6 T19N, R1E	Section 5 T19N, R1E
Section 7 T19N, R1E	Section 8 T19N, R1E

SECTION CORNER RECORD

NE 500-150

BOONE COUNTY SURVEYOR'S OFFICE

State Plane grid coordinates NAD83 (2011):

North: 1772066.81 East: 3132458.10 (U.S. survey feet)

Type of monument: Harrison, 4" disk 'Section Corner'

Depth: Two inches above adjacent ground

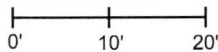
Indiana tie card references:

IN02_T19NR1E05_76 IN02_T19NR1E08_04

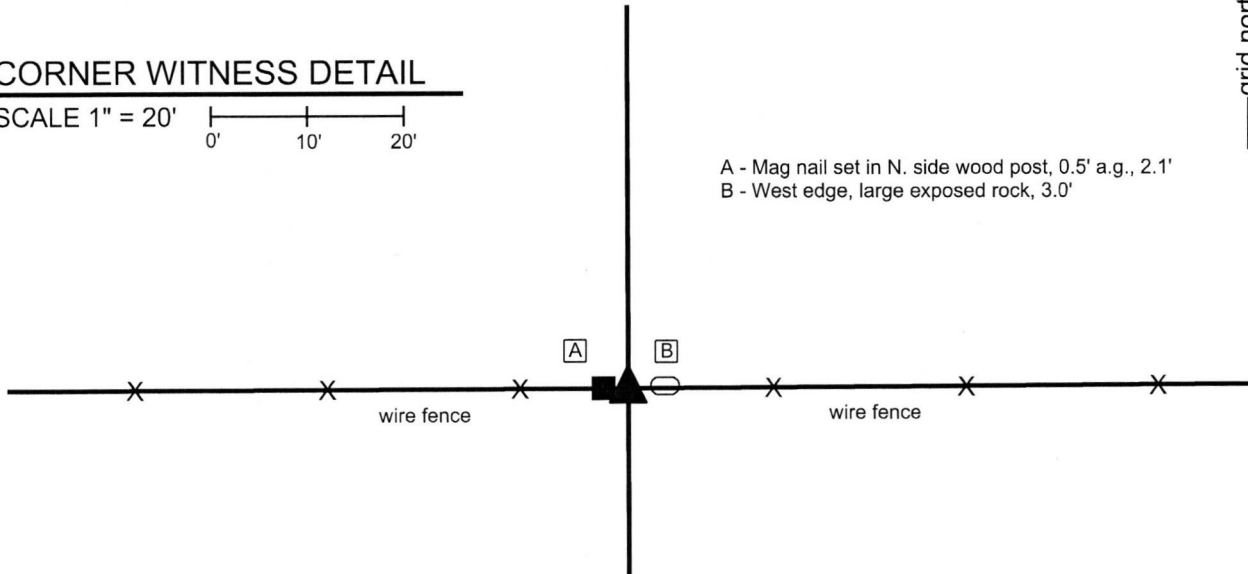


CORNER WITNESS DETAIL

SCALE 1" = 20'



A - Mag nail set in N. side wood post, 0.5' a.g., 2.1'
B - West edge, large exposed rock, 3.0'



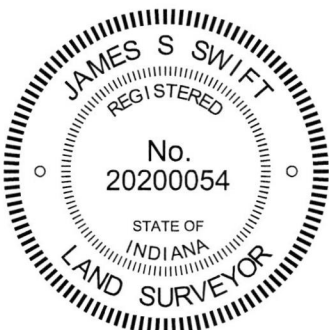
The Harrison monument was set in an E-W fence line in the same E-W position as a previously set Harrison monument.

No references to this corner were found in the Boone County Surveyor's Record beyond the original establishment of the corner as a wood post in 1821. A BCS tie card dated September 28, 2005 shows the corner as a Harrison monument 4.42 feet south of an existing fence. The document shows no documentation of source nor does it attempt to explain why the monument was set south of the fence.

This corner was excavated on October 26, 2017. Prior to excavation, the Harrison monument was found as shown on the tie card. It is noted that a specific corner post was not found and that the fence posts in this vicinity were all of the line-post variety. Excavation revealed several stones found along the existing fence, ranging from 3.5 feet east to 4 feet west of the existing monument. None of the stones could be positively identified as marking the corner, though the concentration of stones in the immediate vicinity of the corner indicates that an older corner post may have existed in this position previously. It is noted that further excavation and probing to the east and west did not reveal more stones. Hence it appears that the stones along the fence were concentrated in the immediate vicinity of the corner.

Though the 2005 tie card does not attempt to explain why the corner was established well south of the fence, the evidence of proximate corners indicates that perhaps the corner was established at the easterly prolongation of a line connecting the corner 1/2 mile west (see corner NE 500-100) with a wood corner post providing evidence of the corner 1/4 mile west. If this is this case, it is not known why the remote evidence of the post one 1/4 mile west was held as superior to the local evidence of the fence at the corner. It also noted that, if this approach were held to control the position of the corner, remote evidence of the corners 1/2 and 1/4 mile, respectively, to the east would indicate that the corner could be further north than the existing fence, rather than further south.

Given the lack of information for why the previous Harrison was established south of the fence, the local evidence of the fence was held as superior to the monument set in 2005. That monument was removed and a new Harrison monument was set in line with the existing E-W fence, 4.8 feet north of the previous monument. The E-W position of the previous monument was held, as it works reasonably well with the respective positions of the corners 1/2 and 1/4 mile east and west and is also approximately centered among the rocks found in the E-W fence.



Kenneth E. Hedge, County Surveyor

James S. Swift, IN LS 20200054
January 10, 2018

Clinton
Township

Section 5
T19N, R1E

Section 8
T19N, R1E

SECTION CORNER RECORD

NE 500-200

BOONE COUNTY SURVEYOR'S OFFICE

State Plane grid coordinates NAD83 (2011):

North: 1772067.21 East: 3135099.37 (U.S. survey feet)

Type of monument: Harrison, 4" disk 'Section Corner'

Depth: Two inches above adjacent ground.

Indiana tie card references:

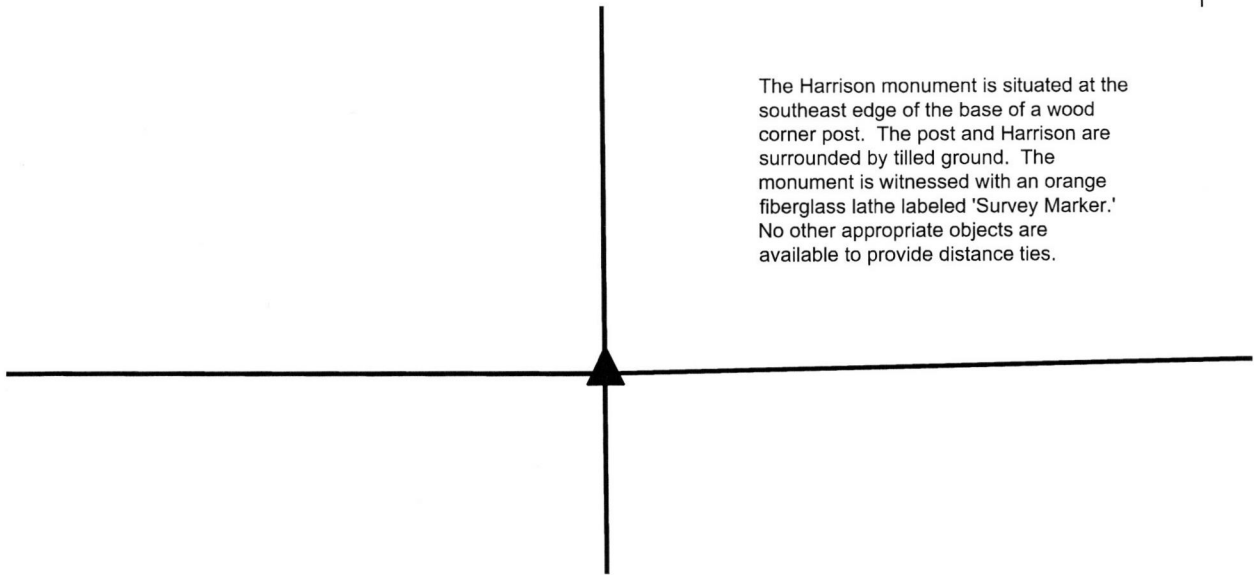
IN02_T19NR1E05_80 IN02_T19NR1E04_72

IN02_T19NR1E08_08 IN02_T19NR1E09_00



CORNER WITNESS DETAIL

No scale



The Harrison monument is situated at the southeast edge of the base of a wood corner post. The post and Harrison are surrounded by tilled ground. The monument is witnessed with an orange fiberglass lathe labeled 'Survey Marker.' No other appropriate objects are available to provide distance ties.

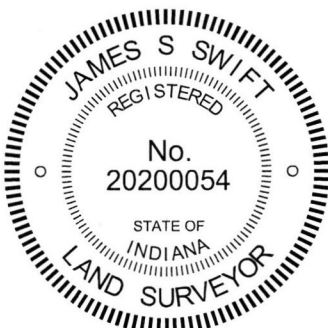
The Harrison monument was set in place of a stone found.

A BCS record of October 15, 1912 references a previous record of March 3, 1887 and states, with respect to this corner, "Re-est. from Oak witness, all gone except roots. Set Rock 10x16x12 +." No recent BCS tie cards were found referencing this corner.

Excavation was performed at this corner on November 28, 2017. Prior to excavation, a wood post was found with fencing cut off to the north, south and west, indicating the the post was formerly at the intersection of fences in those three directions. No standing fence is attached to the post and the post is isolated from other evidence, standing alone in the middle of a tilled field. The post is stable in the ground but leans substantially toward the northeast. The position of the post fits well with other corners, including another isolated post in the field 1/4 mile to the north. Excavation around the base of the post revealed a rock found at the southeast corner of the post. The stone was found to measure 10 inches by 16 inches by 7 inches. It is noted that a sheer edge exists on the rock, indicating the rock was previously of a larger size and split at some point. The dimensions of the rock are such that the sheer edge represents one edge which determines the 7 inch measurement. Hence, it is possible that the rock did previously match the 1887/1912 record dimensions, though that is not possible to confirm this without the remaining portion of the stone, which was not found.

The stone was held as marking the corner. The stone was removed and a Harrison monument was set in its place.

This corner was originally established as a wood post in 1821.



Kenneth E. Hedge, County Surveyor

James S. Swift, IN LS 20200054
January 10, 2018

Clinton Township

Section 5 T19N, R1E	Section 4 T19N, R1E
Section 8 T19N, R1E	Section 9 T19N, R1E

SECTION CORNER RECORD

NE 550-100

BOONE COUNTY SURVEYOR'S OFFICE

State Plane grid coordinates NAD83 (2011):

Corner: North: 1774714.83 East: 3129820.46 (U.S. survey feet)

Witness: North: 1774714.83 East: 3129820.96 (U.S. survey feet)

Type of monument at corner: Wood Corner Post

Witness: 5/8 inch diameter rebar with metal cap 'Boone County Surveyor'

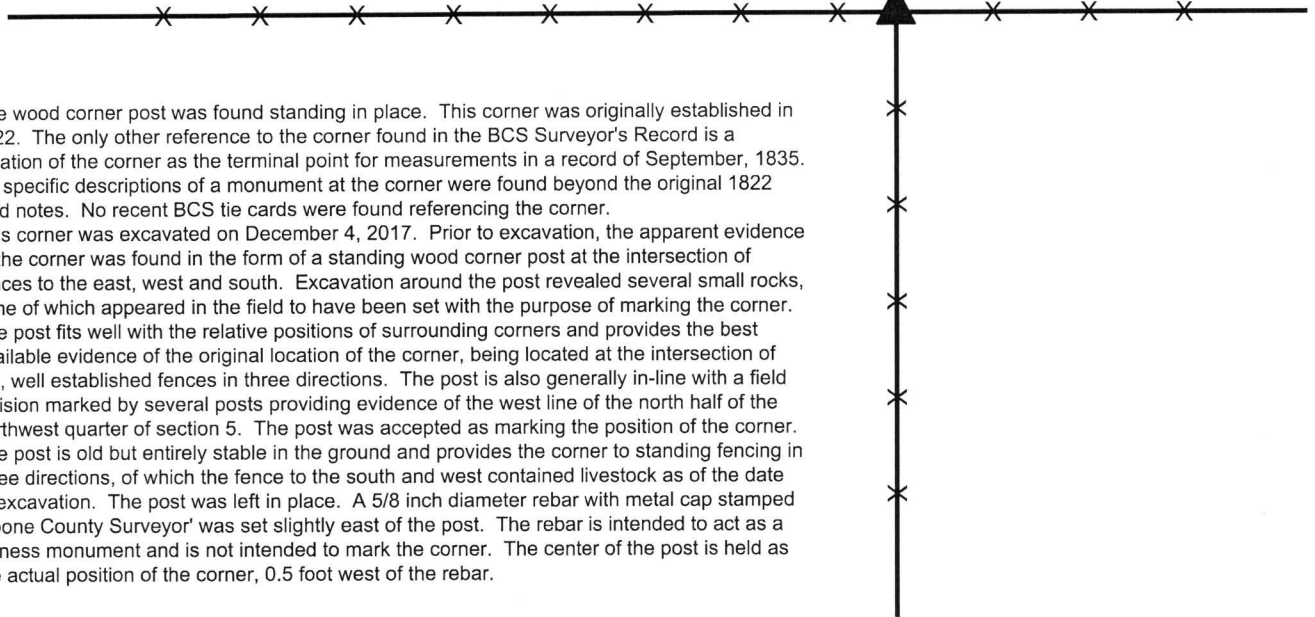
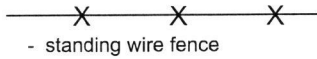
Indiana tie card references:

IN02_T19NR1E06_44 IN02_T19NR1E05_36

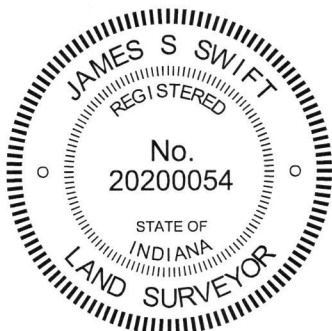


CORNER WITNESS DETAIL

No scale



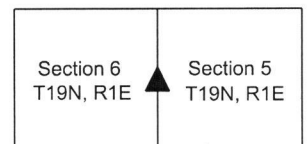
The wood corner post was found standing in place. This corner was originally established in 1822. The only other reference to the corner found in the BCS Surveyor's Record is a notation of the corner as the terminal point for measurements in a record of September, 1835. No specific descriptions of a monument at the corner were found beyond the original 1822 field notes. No recent BCS tie cards were found referencing the corner. This corner was excavated on December 4, 2017. Prior to excavation, the apparent evidence of the corner was found in the form of a standing wood corner post at the intersection of fences to the east, west and south. Excavation around the post revealed several small rocks, none of which appeared in the field to have been set with the purpose of marking the corner. The post fits well with the relative positions of surrounding corners and provides the best available evidence of the original location of the corner, being located at the intersection of old, well established fences in three directions. The post is also generally in-line with a field division marked by several posts providing evidence of the west line of the north half of the northwest quarter of section 5. The post was accepted as marking the position of the corner. The post is old but entirely stable in the ground and provides the corner to standing fencing in three directions, of which the fence to the south and west contained livestock as of the date of excavation. The post was left in place. A 5/8 inch diameter rebar with metal cap stamped 'Boone County Surveyor' was set slightly east of the post. The rebar is intended to act as a witness monument and is not intended to mark the corner. The center of the post is held as the actual position of the corner, 0.5 foot west of the rebar.



Kenneth E. Hedge
Kenneth E. Hedge, County Surveyor

James S. Swift
James S. Swift, IN LS 20200054
February 21, 2018

Clinton Township



SECTION CORNER RECORD

NE 550-200

BOONE COUNTY SURVEYOR'S OFFICE

State Plane grid coordinates NAD83 (2011):

North: 3135073.34 East: 1774713.45 (U.S. survey feet)

Type of monument: 24" length of 5/8-inch diameter rebar with aluminum cap stamped 'Boone County Surveyor'

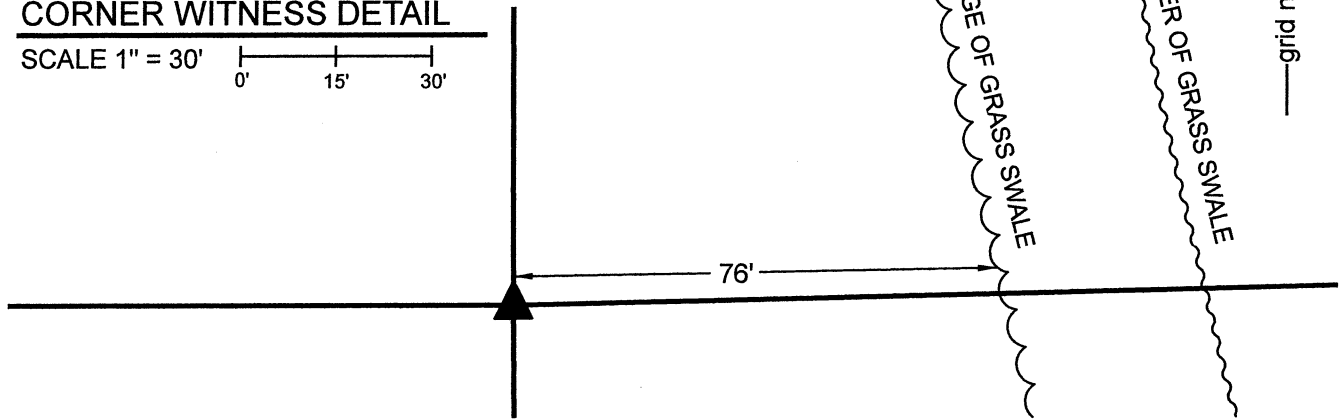
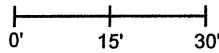
Depth: Fourteen inches below surrounding ground

Indiana tie card references:

IN02_T19NR1E05_44 IN02_T19NR1E04_36

CORNER WITNESS DETAIL

SCALE 1" = 30'



The rebar with Boone County cap was set at a calculated position.

A BCS record dated October 5, 1912 states, with respect to this corner, "Re-est. by line and measure. Set Rock 10x10x16 +." This entry in the record gives no further data about what line or measurement was held to determine the position of the corner.

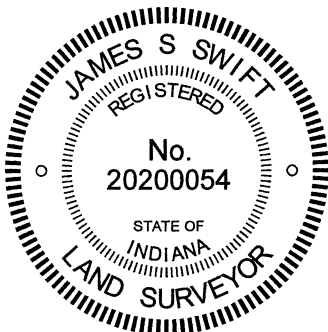
No recent BCS tie cards were found referencing the corner nor were any surveys recorded in the Boone County Recorder's Office found referencing the corner.

The position of this corner has been investigated several times from 2017 to 2021. The corner falls in a tilled field and no physical evidence was found in the immediate vicinity of the corner. Reliable accessory evidence was found for adjacent corners being approximately 1/2 and 1/4 mile to the south, east, west and north, respectively.

Analysis of the various accessory evidence yielded the following observations: A computed position for the corner which is established at the intersection of the northerly prolongation of a line from a Harrison monument at the southeast corner of Section 5 through a wood post approximately 1/4 mile north thereof and the westerly prolongation of a line from a railroad rail marking the BCS referenced center quarter corner of Section 4 through a wood post approximately 1/4 mile west thereof fits remarkably well with most of the available evidence. Holding this position for the corner creates the situation wherein the first mentioned wood post (held for the east-west line) is 1 foot east of the midpoint of the line connecting the rail and computed position and the second mentioned wood post (held for the north-south line) is 2 feet south of the midpoint of the line connecting the Harrison monument and computed position. Also, the computed position falls approximately 1 foot south of the easterly prolongation of a line connecting a Harrison monument at the center of Section 5 with a rail in County Road 175 East (said rail having been set in place of a stone in 1975) marking the BCS referenced southeast corner of the northwest quarter of Section 5. This rail is approximately 9.5 feet east and 0.5 foot north of the midpoint of the line connecting the computed position with the Harrison monument at the center of Section 5. (Note, for that particular quarter-quarter corner, the rail should be held as it is referenced by this office and replaced a stone found marking the corner). The evidence which fits the least well with the computed position is a wood post approximately 1/4 mile north. This post falls approximately 5 feet east of the line connecting the computed position with an INDOT Type B monument marking the northwest corner of Section 4. It is noted that this particular post appears to be quite new and does not represent the older evidence which the other two wood posts represent.

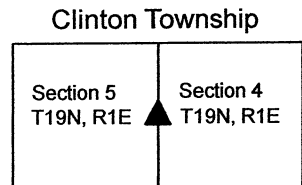
Of the various potential positions for the corner, the computed position discussed above represents the best-fit with the available evidence. Probing and manual excavation in the immediate vicinity of the corner did not reveal the stone mentioned in the 1912 record or any other physical evidence of the corner. The computed position was held and a rebar with metal cap stamped 'Boone County Surveyor' was set at this position, 14 inches deep in the tilled field, on November 22, 2021.

This corner was originally established as a wood post in 1822.



Kenneth E. Hedge
 Kenneth E. Hedge, County Surveyor

James S. Swift
 James S. Swift, IN LS 20200054
 December 1, 2021



SECTION CORNER RECORD

NE 600-100

BOONE COUNTY SURVEYOR'S OFFICE

State Plane grid coordinates NAD83 (2011):

Corner 1: North: 1777337.73 East: 3129618.11 (U.S. survey feet)

Corner 2: North: 1777340.10 East: 3129793.16 (U.S. survey feet)

Type of monument: Plug in monument box, INDOT Type B

Depth: One inch below adjacent road surface

Indiana tie card references:

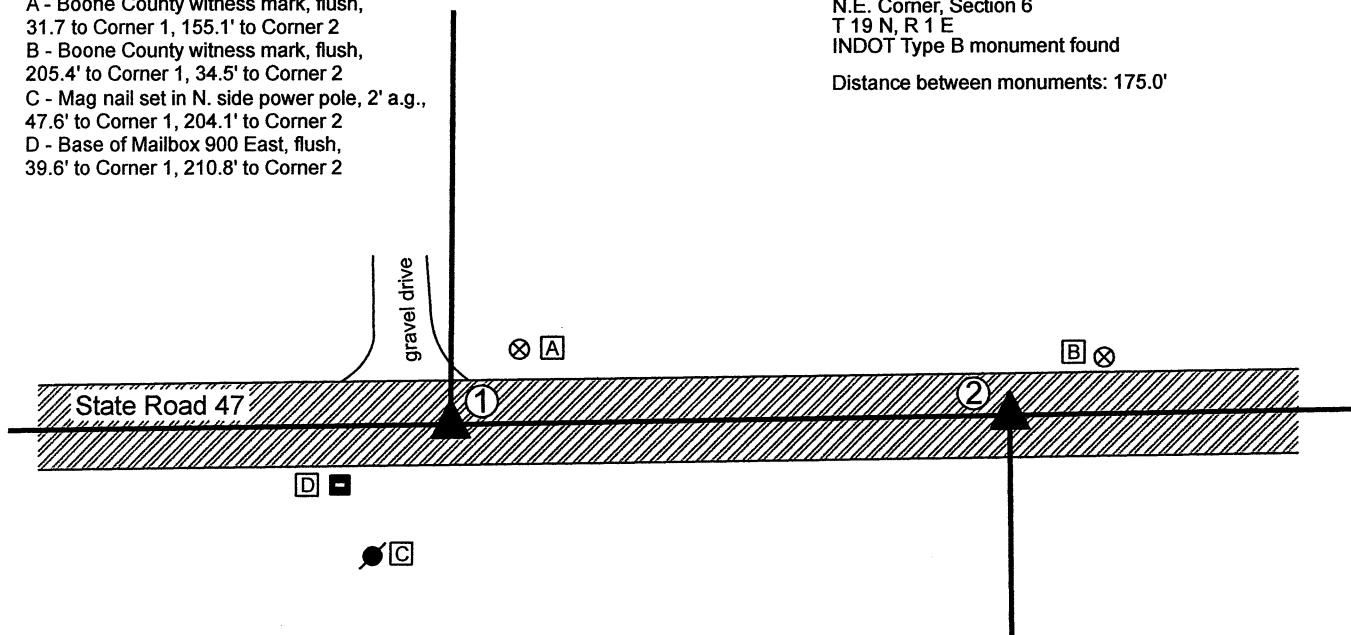
IN02_T20NR1E32_72 IN02_T20NR1E31_80

IN02_T19NR1E06_08 IN02_T19NR1E05_00

CORNER WITNESS DETAIL

SCALE 1" = 60'

- A - Boone County witness mark, flush, 31.7' to Corner 1, 155.1' to Corner 2
- B - Boone County witness mark, flush, 205.4' to Corner 1, 34.5' to Corner 2
- C - Mag nail set in N. side power pole, 2' a.g., 47.6' to Corner 1, 204.1' to Corner 2
- D - Base of Mailbox 900 East, flush, 39.6' to Corner 1, 210.8' to Corner 2



- ① S.E. Corner, Section 31
S.W. Corner, Section 32
T 20 N, R 1 E
INDOT Type B monument found
 - ② N.W. Corner, Section 5
N.E. Corner, Section 6
T 19 N, R 1 E
INDOT Type B monument found
- Distance between monuments: 175.0'

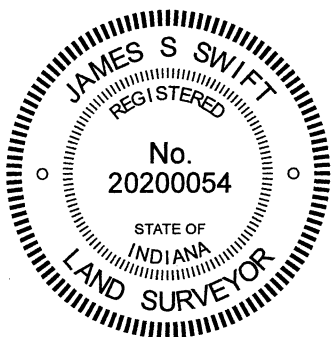
The INDOT Type B monuments were found in place and held as marking the respective corners.

A BCS record of June 2-3, 1862 states, with respect to Corner 1, "Found by measuring the lap from corners Sections 5&6 where found a stone and one tree. Set two Rocks at G. One 8.7 by 5. Top one 24.16 by 8 in." No specific descriptions of Corner 2 were found in the BCS Surveyor's Record beyond the original establishment of the corner as a wood post in 1822, 265 links east of Corner 1, though the corner is referenced in the 1862 record for Corner 1.

A BCS tie card dated June 22, 2005 shows both corners at Type "C" monuments.

The found monuments, being INDOT Type B monuments, fit with the 2005 tie card and also fit with evidence of occupation in the form of the edge of a field and lawn to the north and a field division to the south, respectively. The distance between the monuments fits within 0.2 foot of the original federal closing distance of 265 links. No excavation was performed at these corners as they fall in a state road. The found Type B monuments were held as marking the respective corners.

Corner 1 was originally established as a wood post in 1819. Corner 2 was originally established as a wood post in 1822.



Kenneth E. Hedge
 Kenneth E. Hedge, County Surveyor

James S. Swift
 James S. Swift, IN LS 20200054
 December 20, 2021

Clinton Township

Section 31 T20N, R1E	Section 32 T20N, R1E
Section 6 T19N, R1E	Section 5 T19N, R1E

SECTION CORNER RECORD

NE 600-150

BOONE COUNTY SURVEYOR'S OFFICE

State Plane grid coordinates NAD83 (2011):

Corner 1: North: 1777372.77 East: 3132253.23 (U.S. survey feet)

Corner 2: North: 1777374.98 East: 3132428.64 (U.S. survey feet)

Type of monument: INDOT Type B, plug in monument box

Depth: Flush with adjacent road surface

Indiana tie card references:

IN02_T20NR1E32_76

IN02_T19NR1E05_04

CORNER WITNESS DETAIL

SCALE 1" = 60'
0' 30' 60'

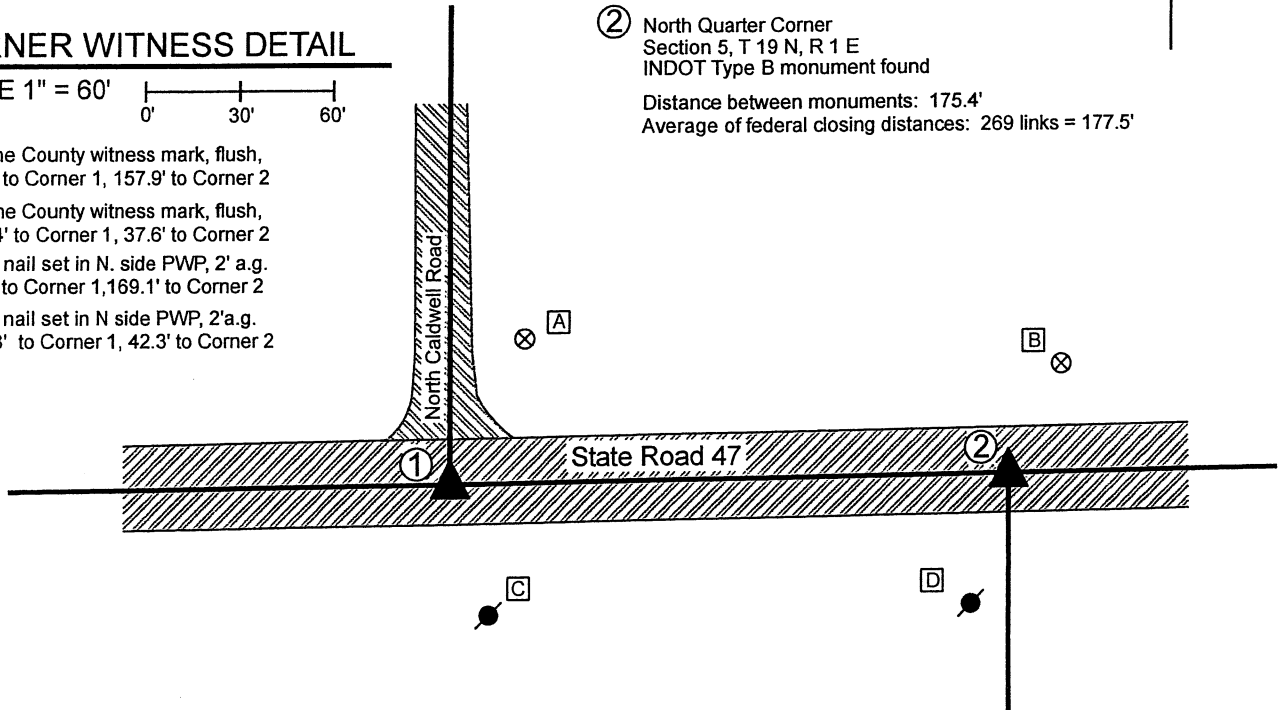
- A - Boone County witness mark, flush, 50.7' to Corner 1, 157.9' to Corner 2
- B - Boone County witness mark, flush, 195.4' to Corner 1, 37.6' to Corner 2
- C - Mag nail set in N. side PWP, 2' a.g. 42.5' to Corner 1, 169.1' to Corner 2
- D - Mag nail set in N side PWP, 2'a.g. 167.8' to Corner 1, 42.3' to Corner 2

① South Quarter Corner
Section 32, T 20 N, R 1 E
INDOT Type B monument found

② North Quarter Corner
Section 5, T 19 N, R 1 E
INDOT Type B monument found

Distance between monuments: 175.4'

Average of federal closing distances: 269 links = 177.5'

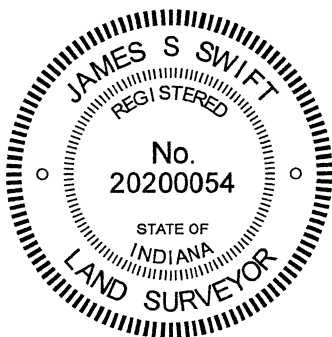


The INDOT Type B monuments were found in place.

A BCS record of June 5, 1862 states, with respect to Corner 1, "Set two rocks. One is 7.5 by 5 in X. Top rock 28.18 by 10 in. marked 1." No specific descriptions of Corner 2 were found in the BCS Surveyor's Record.

A BCS tie card dated June 22, 2005 shows both corners as Type "C" Monuments. The monuments found, being INDOT Type 'B' monuments, appear to be the same monuments, in the same positions, as those shown on the 2005 tie cards. The separation of the monuments is approximately 2 feet less than the average of the federal closing distances at the northeast and northwest corners of Section 5. The origin of the Type B monuments is not known, though they are believed to have been installed in 2004 or 2005 in the position of nails previously marking the corners. The position of the monument at Corner 1 agrees with local evidence of the corner, being at the intersection of the approximate centers of the east-west state road and the county road to the north. No evidence of Corner 2 beyond the east-west state road was found in the immediate vicinity of the corner. The positions of the corners fit well with the relative positions of proximate corners to the east and west.

No excavation was performed at these corners, as they fall in a state highway. The existing monuments are held as the best available evidence of the respective corners. Corner 1 was originally set as a wood post in 1819. Corner 2 is not an original federal corner.



Kenneth E. Hedge
Kenneth E. Hedge, County Surveyor

James S. Swift
James S. Swift, IN LS 20200054
January 26, 2021

Clinton Township

Section 32
T20N, R1E

Section 5
T19N, R1E

SECTION CORNER RECORD

NE 600-200

BOONE COUNTY SURVEYOR'S OFFICE

State Plane grid coordinates NAD83 (2011):

Corner 1: North: 1777408.36 East: 3134886.33 (U.S. survey feet)

Corner 2: North: 1777410.73 East: 3135063.54 (U.S. survey feet)

Type of monument: INDOT Type B, plug in monument box

Depth: flush with adjacent road surface

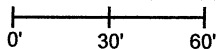
Indiana tie card references:

IN02_T20NR1E32_80 IN02_T20NR1E33_72

IN02_T19NR1E05_08 IN02_T19NR1E04_00

CORNER WITNESS DETAIL

SCALE 1" = 60'



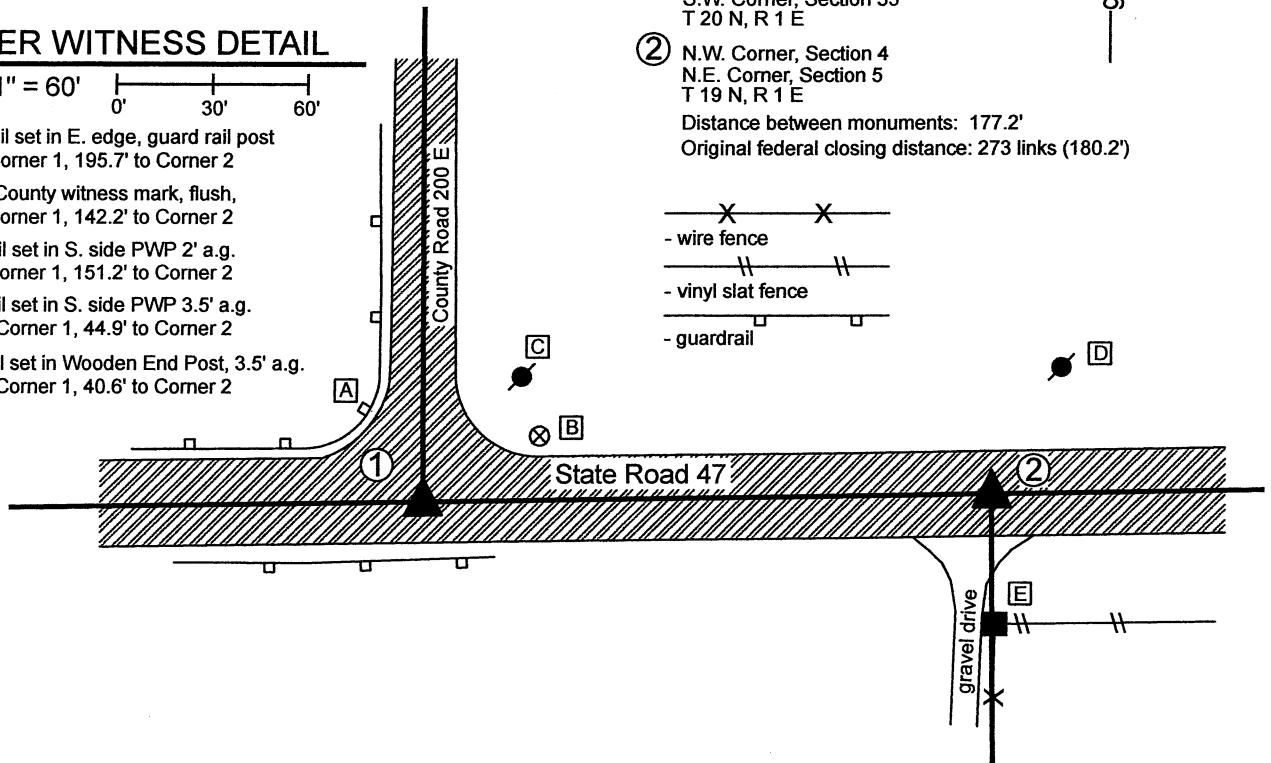
A - Mag Nail set in E. edge, guard rail post
33.6' to Corner 1, 195.7' to Corner 2

B - Boone County witness mark, flush,
41.6' to Corner 1, 142.2' to Corner 2

C - Mag nail set in S. side PWP 2' a.g.
49.4' to Corner 1, 151.2' to Corner 2

D - Mag nail set in S. side PWP 3.5' a.g.
203.2' to Corner 1, 44.9' to Corner 2

E - Mag nail set in Wooden End Post, 3.5' a.g.
182.6' to Corner 1, 40.6' to Corner 2



① S.E. Corner, Section 32
S.W. Corner, Section 33
T 20 N, R 1 E

② N.W. Corner, Section 4
N.E. Corner, Section 5
T 19 N, R 1 E

Distance between monuments: 177.2'

Original federal closing distance: 273 links (180.2')

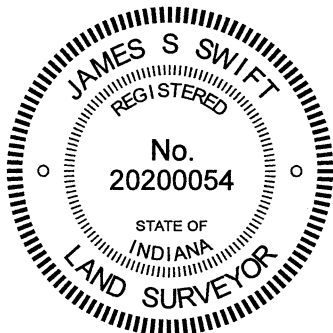
The INDOT Type B monuments were found in place.

A BCS record of June 2-3, 1862 states, with respect to Corner 1, "Set two rocks. One is 7.5 by 7 X. Top rock 28.18 by 10 marked 1." No specific descriptions of Corner 2 were found in the BCS Surveyor's Record beyond the original establishment of the corner as a wood post in 1822 at a point 273 links east of the post found at Corner 1.

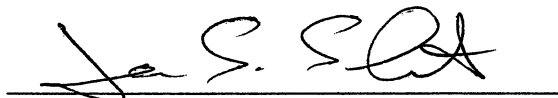
A BCS tie card dated 2004 shows both corners as P.K. Nails with washers. A subsequent BCS tie card dated June 22, 2005 shows both corners as Type "C" Monument, in positions which agree precisely with the P.K. Nails shown on the previous tie card.

The INDOT monuments, being Type B monuments (brass plug in monument box), were found in good condition in positions which agree with the previous BCS tie cards. These corners were not excavated, as they fall in a state highway. The Type B monuments were held as marking the respective corners. Corner 1 agrees with local evidence in the form of being at the intersection of the east-west state road and the county road to the north. Corner 2 agrees with local evidence, being in the center of the east-west state road, in line with a fence to the south.

Corner 1 was originally established as a wood post in 1819. Corner 2 was originally established as a wood post in 1822.




Kenneth E. Hedge, County Surveyor


James S. Swift, IN LS 20200054
January 12, 2020

Clinton Township

Section 32 T20N, R1E	Section 33 T20N, R1E
Section 5 T19N, R1E	Section 4 T19N, R1E