

# SECTION CORNER RECORD

NW 500-950

## BOONE COUNTY SURVEYOR'S OFFICE

State Plane grid coordinates NAD83 (2011):

North: 1772011.00 East: 3074580.25 (U.S. survey feet)

Type of monument: Harrison, 4" disk 'Section Corner'

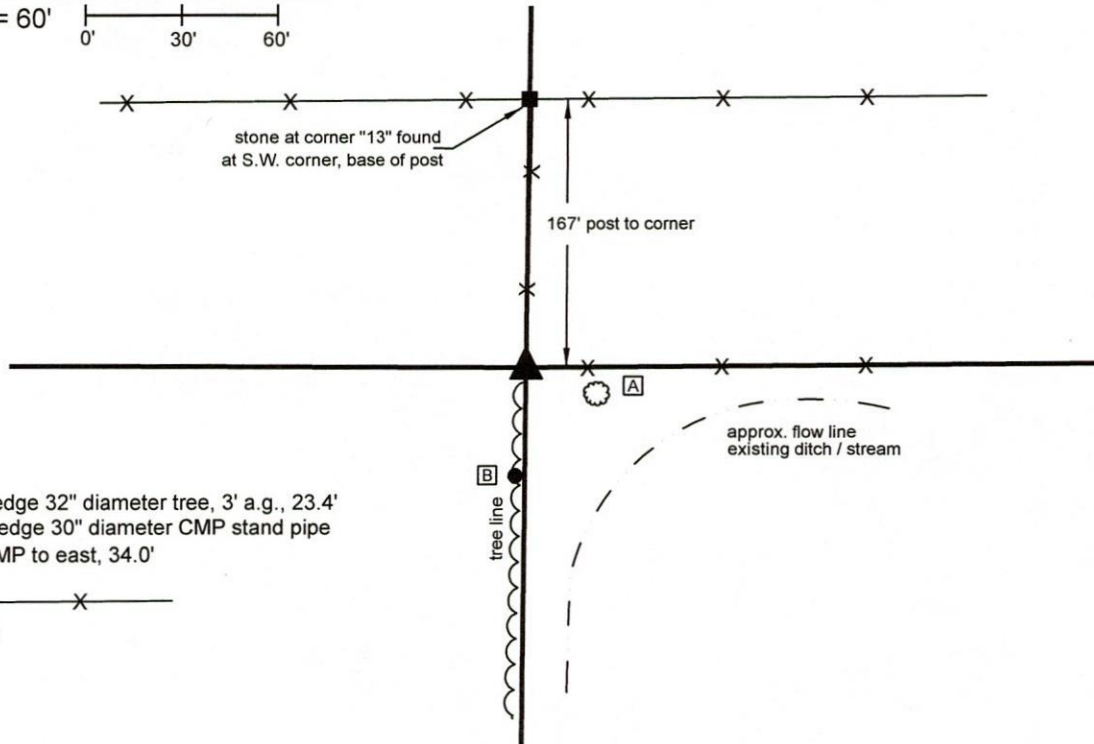
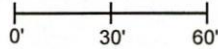
Depth: Two inches above ground to west, five inches to east

Indiana tie card references:

IN02\_T19NR2W04\_76 IN02\_T19NR2W09\_04

### CORNER WITNESS DETAIL

SCALE 1" = 60'



- A - N.W. edge 32" diameter tree, 3' a.g., 23.4'
- B - North edge 30" diameter CMP stand pipe with CMP to east, 34.0'

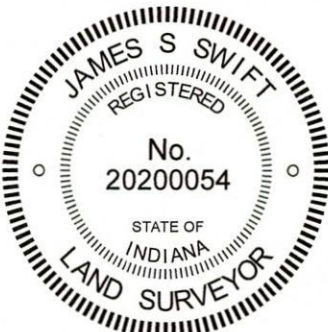
- wire fence

The Harrison monument was set in place of the remnants of the base of a wood corner post found.

A BCS record dated March 14-15, 1895 states, with respect to this corner, "found from remains of Oak B.T. after intersecting lines & set 13." The record shows a distance of 2.50 chains from the corner to "13" which is described in the same record as being a stone 13.12.10 inches.

This corner was excavated on March 16 & 17, 2020. Prior to excavation, the intersection of old fences to the north and east, with a post and cut-off fence to the south was observed. On first sight, it appeared that the post for the fence to the north and east was north and east of the post for the fence to the south. Excavation revealed that the post for the fence to the north and east had been broken off and shifted to the east, and had been generally in-line with and slightly north of the post for the cut-off fence to the south. As the 1895 record ties the corner to a stone to the north, this position was also excavated. The stone described in the 1895 record was found 2 inches below grade at the southwest edge of a wood corner post at the intersection of fences to the south, east and west. No stones which were positively identifiable as corner stones were found in the immediate vicinity of the actual corner. The primary post, being the base of the post for the fences to the north and east was found to be 1.7 foot further away from the stone at corner "13" than was described in the 1895 record. No stone is described as being at the subject corner in the 1895 record. The base of the post for the old fences to the north and east was accepted as the best available evidence of the subject corner. It is noted that an uncertainty of 1.7 feet north-south exists with respect to this position and the relative position of the stone found at corner "13."

Sugar Creek Township



*Kenneth E. Hedge*  
Kenneth E. Hedge, County Surveyor

*James S. Swift*  
James S. Swift, IN LS 20200054

March 23, 2020

Section 4  
T19N, R2W

Section 9  
T19N, R2W

# SECTION CORNER RECORD

NW 550-900

## BOONE COUNTY SURVEYOR'S OFFICE

State Plane grid coordinates NAD83 (2011):

North: 1774688.55 East: 3077228.06 (U.S. survey feet)

Type of monument: Harrison, 4" disk 'Section Corner'

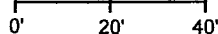
Depth: Flush with adjacent road surface

Indiana tie card references:

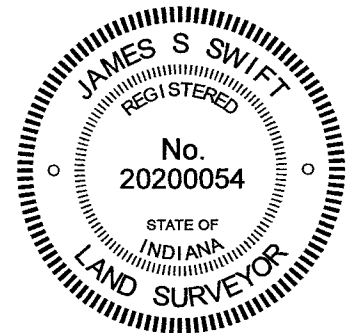
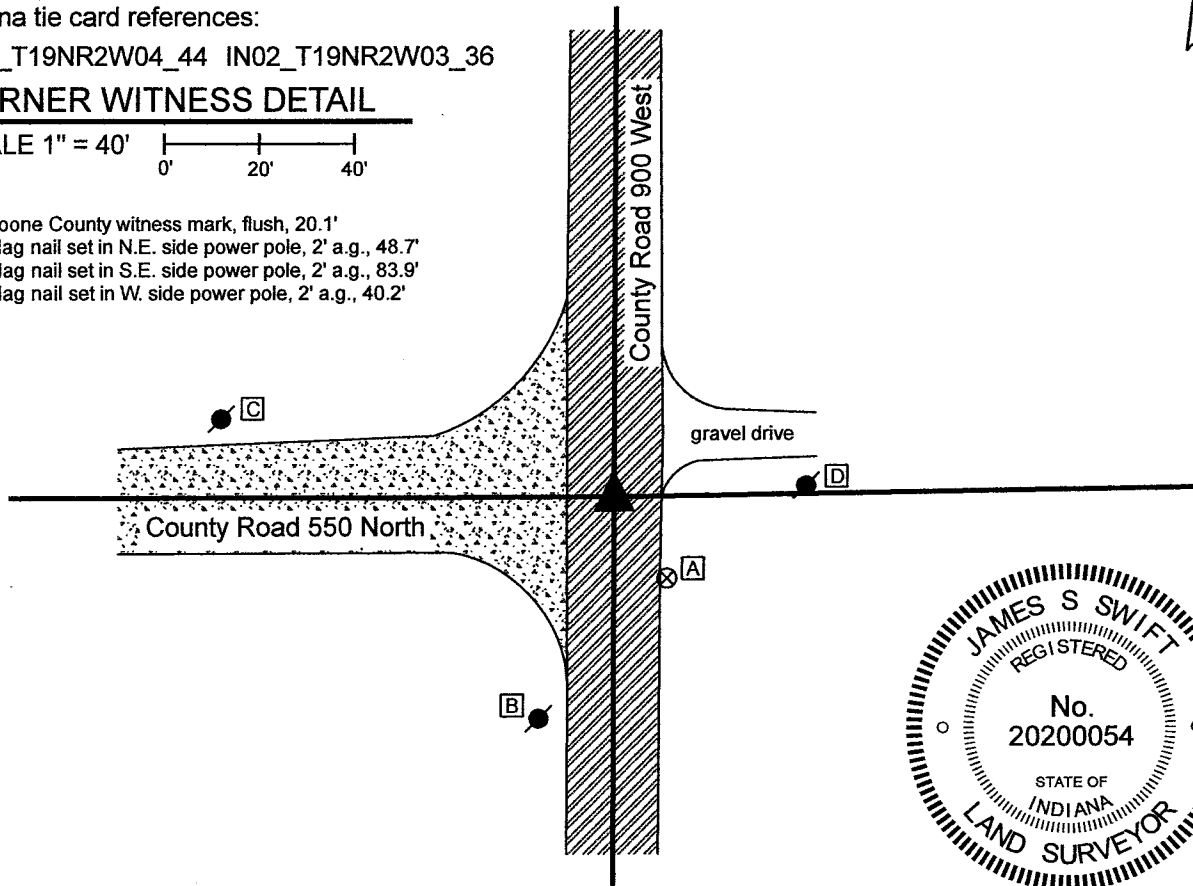
IN02\_T19NR2W04\_44 IN02\_T19NR2W03\_36

### CORNER WITNESS DETAIL

SCALE 1" = 40'



- A - Boone County witness mark, flush, 20.1'
- B - Mag nail set in N.E. side power pole, 2' a.g., 48.7'
- C - Mag nail set in S.E. side power pole, 2' a.g., 83.9'
- D - Mag nail set in W. side power pole, 2' a.g., 40.2'



The Harrison monument was set directly over the top of a vertical section of railroad rail found.

A BCS record of March 9-10, 1857 states, with respect to this corner, "Reest. Set Rock 10,14." A BCS tie card dated August 28, 1969 states, "Stone Located. Replaced RRR." This statement is interpreted to mean that the 1969 BCS field crew found a stone marking the corner and replaced it with a vertical section of railroad rail. The corner is shown as a '3/8" rebar found per county reference ties' on a survey by Brian L. Haggard recorded in Survey Book 4, page 34. It is shown as a 'railroad rail per BCSR, Mag Nail Found over top' on a survey by Richard L. Fidler recorded in Survey Book 17, page 6 and is shown as a '1/2-inch diameter rebar found' on a survey by Jonathon E. Hause recorded in Survey Book 21, pages 67-68, all as recorded in the Office of the Boone County Recorder.

This corner was excavated on August 6, 2021. Given the statement of "Stone Located. Replaced RRR" on the 1969 BCS tie card, significant excavation was not performed, as it has been observed at many other corners throughout the county that such a statement indicates that the stone was removed when found and replaced with a railroad rail. Prior to the minor excavation, a 1/2-inch diameter rebar was found at 3 inches deep in a hole in the asphalt at the intersection of the two county roads. Excavation revealed the railroad rail (RRR) called for on the 1969 BCS tie card at 8 inches deep. It was evident that the rebar had been driven along the east edge of the rail. The rebar was removed and a Harrison monument was set directly over the top, center of the rail, anchored to the rail with concrete. The top of the rebar, as found, had been 0.1 foot east of this position. This corner was originally established as a wood post in 1829.

Kenneth E. Hedge, County Surveyor

James S. Swift, IN LS 20200054  
August 20, 2021

Sugar Creek Township

Section 4 T19N, R2W	Section 3 T19N, R2W
------------------------	------------------------

# SECTION CORNER RECORD

# NW 550-950

## BOONE COUNTY SURVEYOR'S OFFICE

State Plane grid coordinates NAD83 (2011):

North: 1774686.19 East: 3074602.80 (U.S. survey feet)

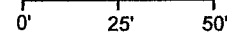
Type of monument: 5/8" diameter rebar with aluminum cap stamped, 'Boone County Surveyor'

Depth: Six inches below adjacent road surface

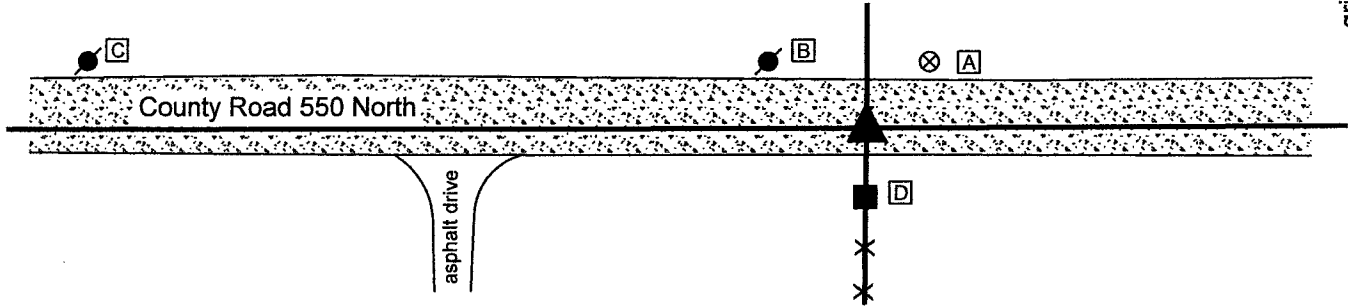
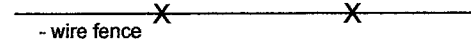
Indiana tie card reference: IN02\_T19NR2W04\_40

### CORNER WITNESS DETAIL

SCALE 1" = 50'



- A - Boone County witness mark, flush, 23.7'
- B - Mag nail set in S. side power pole, 2' a.g., 31.4'
- C - Mag nail set in S. side power pole, 2' a.g., 205.9'
- D - Mag nail set in N. side wood corner post, 2' a.g., 18.0'



The 5/8-inch rebar with metal cap was set at a computed position in accordance with the evidence of the fence to the south and data from a 1975 survey of the adjacent property to the southwest.

This corner is not an original corner of the Public Land System. The corner is mentioned in BCS records of 1834 and 1895 but no monument is specified as having been set. No recent BCS tie cards were found referencing this corner.

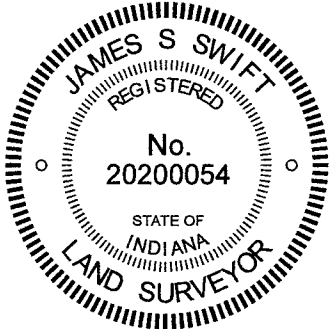
The corner is shown on a survey by Carl M. Anderson dated December 18, 1975 which appears to be the original survey which created the description of the 7.5750-acre parcel to the southwest of the corner. This survey does not show the fence to the south, which is believed to have been present in 1975, but includes a distance tie to the west quarter corner of section 4 which precisely matches the distance between a railroad rail marking that corner (set in 1971, replaced with a Harrison monument August 6, 2021) and the northerly prolongation of the ancient fence to the south. It is noted that a substantial line of occupation is evident on 1939 aerial photos of this area, indicating the high probability of a fence being present at that time. The corner is shown on a survey by Richard L. Fidler on a survey recorded in Survey Book 17, page 6. No monument is mentioned, but the distance shown for the north line of the southeast quarter of section 4 fits with the distance between a railroad rail at the east quarter corner of section 4 and the northerly prolongation of the fence to the south. The corner is shown as a calculated position on surveys by Jonathon E. Hause recorded in Survey Book 21, pages 67-68 and Survey Book 21, pages 82-83. The Surveyor's Report in those surveys does not specifically state by what means the position was computed, but it is evident that the corner was calculated to be at the intersection of straight lines connecting the opposite quarter corners, which position falls approximately 17 feet west of the position in the road at the northerly prolongation of the ancient fence to the south.

Due to the significant variation between the positions held on the Anderson and Fidler surveys with respect to the Hause surveys, the position of the center-of-section corner was addressed by the Boone County Surveyor's Office. Excavation was performed on August 6, 2021 wherein both the position in-line with the fence and the position computed by Hause were excavated. A small stone was found at three feet deep, being at the bottom of the road bed, 1.7 feet west of the fence to the south, but could not be confirmed as being a stone intentionally set to mark the corner. Additional evidence was found at neither corner.

Investigation of evidence of the 1975 Anderson survey yielded the observation that the northerly terminus of another fence of similar character is situated at nearly precisely the deed and surveyed distance of 300 feet west of the end post marking the northerly terminus of the fence which fits with the Anderson distance to the west quarter corner. A rebar with Carl Anderson's metal cap was also found at the base of a wood corner post at deed distance south of the east-west road. This corner post and rebar are up to 5 feet west of a straight line connecting the point in the road at the prolongation of the fence and a Harrison monument previously set by this office to mark the south quarter corner of section 4 (see BCS Corner NW 500-950). Based on the relative positions of the railroad rail at the west quarter corner of section 4 and the Anderson rebar at or near the southeast corner of the 7.5750-acre parcel, it is evident that Mr. Anderson established the northeast corner of the southwest quarter on a line connecting the east and west quarter corners, in-line with the ancient fence to the south. It also appears that he held the approximately 1100 foot north-south section of fence as the quarter section line for purposes of surveying the 7.5750-acre parcel. Nonetheless, it is clearly evident that the center quarter corner was held Carl Anderson in 1975 in-line with the old fence bearing south from the south side of the road. This precedent was upheld for purposes of establishing the corner. The specific position of the corner was established along the line connecting the east and west quarter corners with the northerly prolongation of the ancient fence to the south, which position precisely matches the distance between the subject corner and the rail at the west quarter corner shown on the 1975 survey. It is noted that this position is close to the mid-point of a straight line connecting the east and west quarter corners of section 4, which may be the means by which the corner had been established when the old fence was installed.

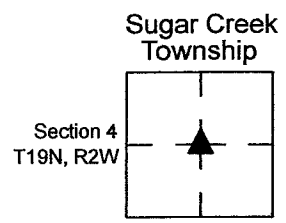
Requested to present evidence for why the position at the intersection of the lines connecting opposite quarter corners should be held as superior to the evidence discussed above, Jonathon Hause declined to attend a meeting August 12 which included the Boone County Surveyor and other interested parties, hence additional evidence he may have was not addressed and the information reported on his surveys is accepted as the extent of the relevant information he has to share.

For purposes of timely resolution to the position of the corner, per the request of interested parties, a rebar with metal cap was set on August 16, 2021. This monument will be replaced with a Harrison monument when the equipment to do so may be deployed.



*Kenneth E. Hedge*  
 \_\_\_\_\_  
 Kenneth E. Hedge, County Surveyor

*James S. Swift*  
 \_\_\_\_\_  
 James S. Swift, IN LS 20200054  
 August 20, 2021



# SECTION CORNER RECORD

NW 550-1000

## BOONE COUNTY SURVEYOR'S OFFICE

State Plane grid coordinates NAD83 (2011):

North: 1774683.83 East: 3071977.34 (U.S. survey feet)

Type of monument: Harrison, 4" disk 'Section Corner'

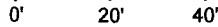
Depth: Six inches below adjacent gravel road surface

Indiana tie card references:

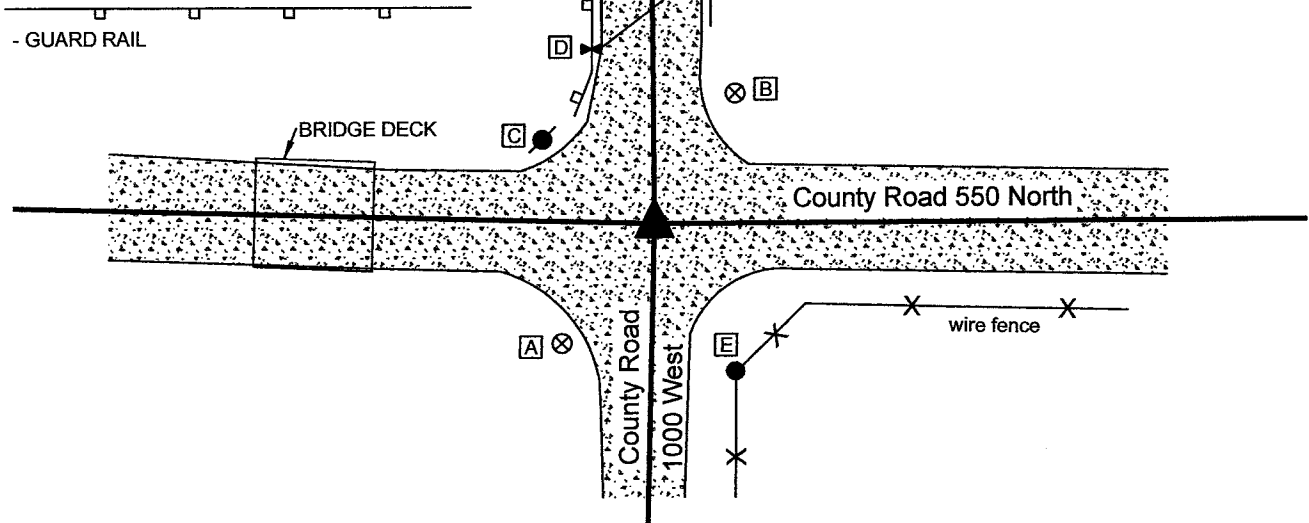
IN02\_T19NR2W05\_44 IN02\_T19NR2W04\_36

### CORNER WITNESS DETAIL

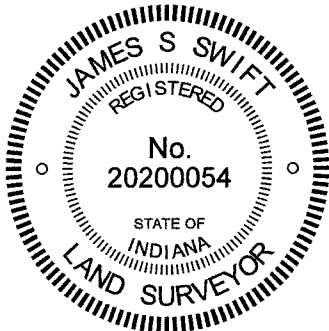
SCALE 1" = 40'



- A - Boone County witness mark, flush, 31.3'
- B - Boone County witness mark, flush, 31.9'
- C - Mag nail set in S.E. side power pole, 2' a.g., 29.4'
- D - Chisel mark in guard rail post, 38.9'
- E - Mag nail set in W. side wood corner post, 2' a.g., 34.9'



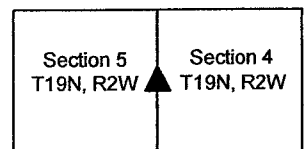
The Harrison monument was set in place of a railroad rail and a rebar found. No specific descriptions of this corner were found in the BCS Surveyor's Record beyond the original establishment of the corner as a wood post in 1829. The corner is mentioned as the terminal point of measurements in a record from 1895. The corner is shown on a BCS tie card dated October 8, 1971 which states "No stone." The corner is shown as a railroad rail on a survey by Jerry L. Carter recorded as Instrument 0217185 and is shown as a 5/8-inch diameter rebar found on surveys by Jonathon E. Hause recorded in Survey Book 21, pages 67-68 and Survey Book 21, pages 82-83, all as recorded in the Office of the Boone County Recorder. This corner was excavated on August 6, 2021. Prior to excavation, a rebar with a yellow plastic cap (markings illegible) was found at 6 inches deep at the intersection of the two county roads. Excavation revealed a vertical section of railroad rail at 12 inches deep. The rebar had been set such that the top of the rebar was directly over the top, center of the rail. Further excavation revealed no additional evidence of the corner. This corner falls in an area of fill associated with bridges over a small waterway to the north and west of the corner, Though the 1971 tie card makes no mention of the rail, it is known to have been a standard practice of BCS field crews from that era to set a vertical section of rail to mark the corner, and the statement of "no stone" is interpreted to indicate that no stone was found and a rail was set. The rail and rebar fit with the local evidence of the corner, being at the approximate center of the intersection of the two county roads. These monuments were accepted as marking the position held as the corner in 1971 and accepted as the best available evidence of the original position of the corner. The rail and rebar were both removed during excavation and replaced with a Harrison monument in the same position.



*Kenneth E. Hedge*  
Kenneth E. Hedge, County Surveyor

*James S. Swift*  
James S. Swift, IN LS 20200054  
August 20, 2021

Sugar Creek Township



# SECTION CORNER RECORD

NW 600-900

## BOONE COUNTY SURVEYOR'S OFFICE

Data for Corner 2 only:

State Plane grid coordinates NAD83 (2011):

North: 1777403.22 East: 3077228.52 (U.S. survey feet)

Type of monument: Harrison, 4" disk 'Section Corner'

Depth: One inch above adjacent ground

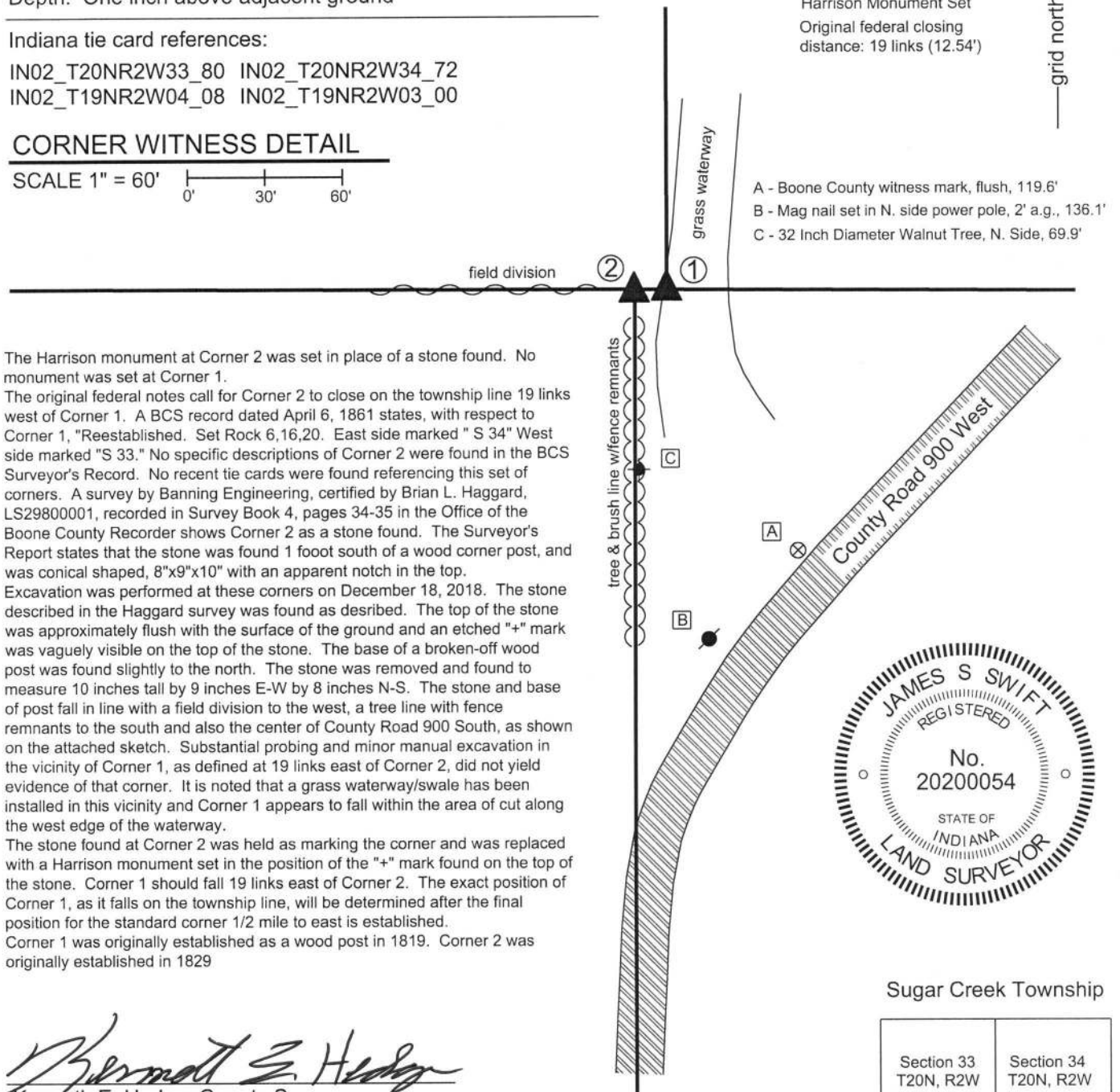
Indiana tie card references:

IN02\_T20NR2W33\_80 IN02\_T20NR2W34\_72  
 IN02\_T19NR2W04\_08 IN02\_T19NR2W03\_00

### CORNER WITNESS DETAIL

SCALE 1" = 60'

- ① S.E. Corner, Section 33  
 S.W. Corner, Section 34  
 T 20 N, R 2 W  
 Final position not determined
- ② N.W. Corner, Section 3  
 N.E. Corner, Section 4  
 Harrison Monument Set  
 Original federal closing  
 distance: 19 links (12.54')



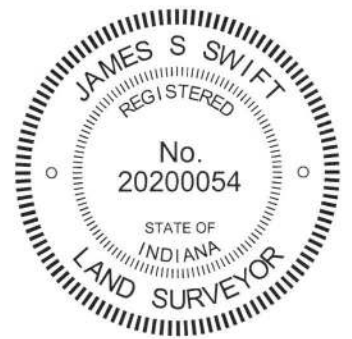
- A - Boone County witness mark, flush, 119.6'
- B - Mag nail set in N. side power pole, 2' a.g., 136.1'
- C - 32 Inch Diameter Walnut Tree, N. Side, 69.9'

The Harrison monument at Corner 2 was set in place of a stone found. No monument was set at Corner 1.

The original federal notes call for Corner 2 to close on the township line 19 links west of Corner 1. A BCS record dated April 6, 1861 states, with respect to Corner 1, "Reestablished. Set Rock 6,16,20. East side marked " S 34" West side marked "S 33." No specific descriptions of Corner 2 were found in the BCS Surveyor's Record. No recent tie cards were found referencing this set of corners. A survey by Banning Engineering, certified by Brian L. Haggard, LS29800001, recorded in Survey Book 4, pages 34-35 in the Office of the Boone County Recorder shows Corner 2 as a stone found. The Surveyor's Report states that the stone was found 1 foot south of a wood corner post, and was conical shaped, 8"x9"x10" with an apparent notch in the top. Excavation was performed at these corners on December 18, 2018. The stone described in the Haggard survey was found as described. The top of the stone was approximately flush with the surface of the ground and an etched "+" mark was vaguely visible on the top of the stone. The base of a broken-off wood post was found slightly to the north. The stone was removed and found to measure 10 inches tall by 9 inches E-W by 8 inches N-S. The stone and base of post fall in line with a field division to the west, a tree line with fence remnants to the south and also the center of County Road 900 South, as shown on the attached sketch. Substantial probing and minor manual excavation in the vicinity of Corner 1, as defined at 19 links east of Corner 2, did not yield evidence of that corner. It is noted that a grass waterway/swale has been installed in this vicinity and Corner 1 appears to fall within the area of cut along the west edge of the waterway.

The stone found at Corner 2 was held as marking the corner and was replaced with a Harrison monument set in the position of the "+" mark found on the top of the stone. Corner 1 should fall 19 links east of Corner 2. The exact position of Corner 1, as it falls on the township line, will be determined after the final position for the standard corner 1/2 mile to east is established.

Corner 1 was originally established as a wood post in 1819. Corner 2 was originally established in 1829



*Kenneth E. Hedge*  
 Kenneth E. Hedge, County Surveyor

*James S. Swift*  
 James S. Swift, IN LS 20200054  
 January 9, 2019

Sugar Creek Township

Section 33 T20N, R2W	Section 34 T20N, R2W
Section 4 T19N, R2W	Section 3 T19N, R2W