

# SECTION CORNER RECORD

NW 500-350

## BOONE COUNTY SURVEYOR'S OFFICE

State Plane grid coordinates NAD83 (2011):

North: 1771942.72 East: 3106276.37 (U.S. survey feet)

Type of monument: Harrison, 4" disk 'Section Corner'

Depth: One inch below adjacent road surface

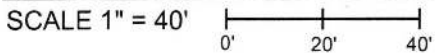
Indiana tie card references:

IN02\_T19NR1W04\_76

IN02\_T19NR1W09\_04

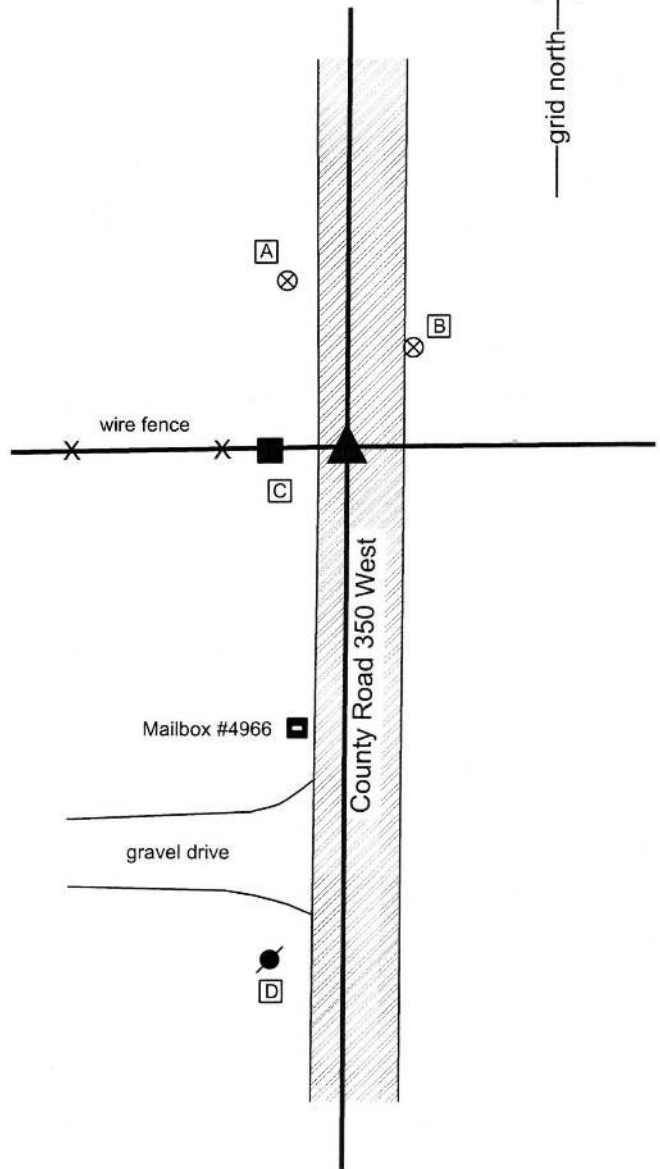


### CORNER WITNESS DETAIL



- A - Boone County witness mark, flush, 36.7'
- B - Boone County witness mark, flush, 24.9'
- C - Mag nail set in E. side wood post, 2' a.g., 16.4'
- D - Mag nail set in E. side power pole, 2' a.g., 107.3'

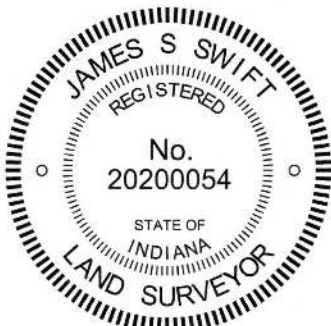
Boone County witness mark is a 3/8" diameter x 2' long rebar bearing a metal cap stamped "Boone County Witness Point."



The Harrison monument was set over a stone found. No specific descriptions of this corner were found in the BCS Surveyor's Record, though the corner is mentioned as the terminal point for measurements in records of 1839 and 1852, indicating that some form of monument was likely present when those records were made.

A BCS tie card dated August, 1970 states "No Stone." This corner was excavated on June 30, 2015. Prior to excavation, a Mag nail was found at the surface of the asphalt road. Excavation revealed a railroad rail found at 7 inches deep, directly below the Mag nail. Further excavation revealed a stone found at 8 inches deep, west of the rail. The stone was fully embedded in the clay layer below the road, with the top of the stone being situated at the bottom of the road bed. The top 10 inches of the stone were exposed, at which point the stone measured 10 inches E-W by 13 inches N-S and remained entirely stable in the clay layer below the road. It appeared that the stone was much larger than the portion exposed. No specific marks were detected on the stone. The stone was held as marking the corner and a Harrison monument was set over the top, center of the rock. The nail and rail, removed during excavation, had been 1.5 feet east of the top, center of the stone. Though not stated on the 1970 tie card, it is believed that the rail originates from the field work associated with the creation of that document. Clearly, the statement "no stone" on that document was erroneous.

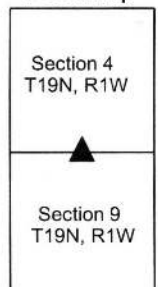
This corner was originally established as a wood post in 1829.



*Kenneth E. Hedge*  
 Kenneth E. Hedge, County Surveyor

*James S. Swift*  
 James S. Swift, IN LS 20200054  
 March 28, 2015

Washington Township



# SECTION CORNER RECORD

NW 550-300

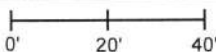
## BOONE COUNTY SURVEYOR'S OFFICE

State Plane grid coordinates NAD83 (2011):  
North: 1774644.45 East: 3108956.7152 (U.S. survey feet)

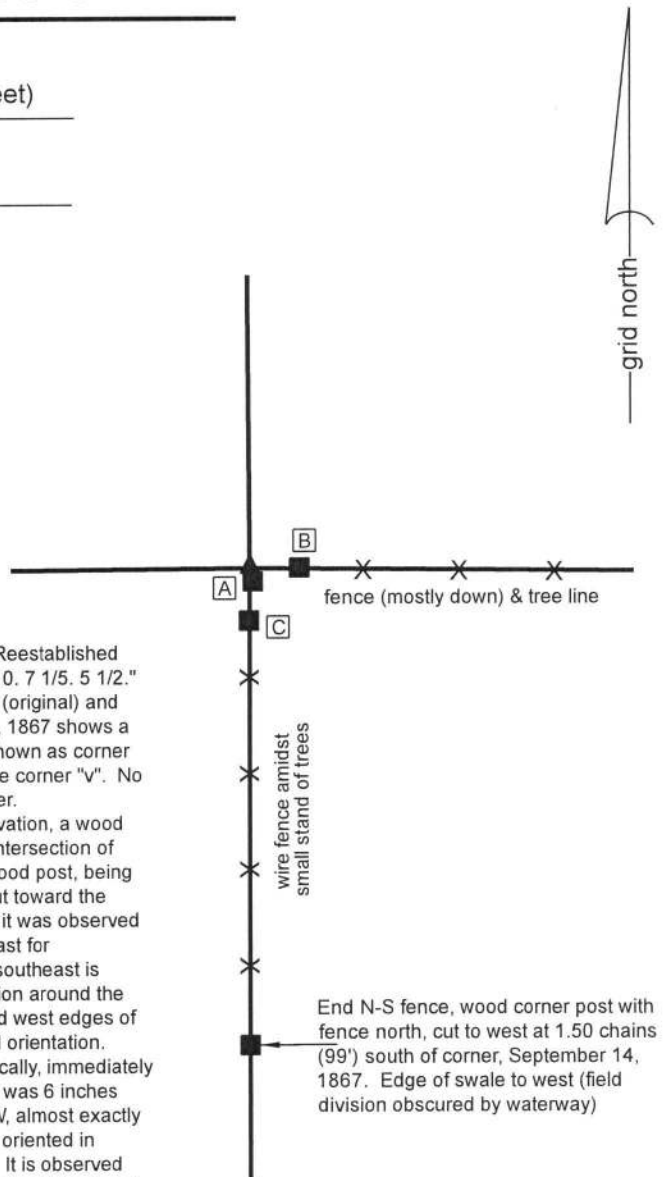
Type of monument: Harrison, 4" disk 'Section Corner'  
Depth: Four inches above adjacent ground

Indiana tie card references:  
IN02\_T19NR1W04\_44 IN02\_T19NR1W03\_36

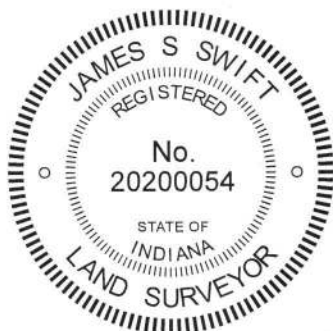
### CORNER WITNESS DETAIL

SCALE 1" = 40' 


- A - N. edge, wood corner post, leaning south, @5" a.g., 0.95'
- B - Center of 8x8 inch wood brace post, 9.7'
- C - Center of 4x4 inch wood brace post, 10.8'



The Harrison monument was set in place of a stone found. A BCS record dated October 22, 1862 states, with respect to this corner, "Reestablished from one of original bearing trees (sugar). Found by chopping. Set Rock 10. 7 1/5. 5 1/2." A BCS record dated December 20, 1880 states "Reestablished from sugar (original) and walnut (both green). Set rock 16.14.10+." A BCS record of September 14, 1867 shows a distance between this corner and another point 1.50 chains to the south (shown as corner "v" in the record) and demonstrates that a property line bears west from the corner "v". No recent BCS tie cards or recorded surveys were found referencing this corner. Excavation was performed at this corner on March 18, 2019. Prior to excavation, a wood corner post, leaning substantially toward the south east, was found at the intersection of fences to the south (standing) and east (mostly on the ground). Another wood post, being the southerly terminus of the short north-south fence and having fencing cut toward the west, was found at 98 feet south of the northerly post. Prior to excavation, it was observed that a pile of rocks was situated immediately north of the post, extending east for approximately 20 feet. It is also noted that the elevation of the land to the southeast is substantially higher than the elevation of the land north and west. Excavation around the post revealed numerous rocks of small to medium size at the northwest and west edges of the post, up to three feet deep, most of which were situated in a haphazard orientation. However, the stone described in the 1862 record was found, standing vertically, immediately north of the post and in-line with the fence to the east. As found, the stone was 6 inches deep and measured 11 inches tall by 7 1/2 inches N-S by 5 1/2 inches E-W, almost exactly matching the 1862 record. The orientation of this stone, being vertical and oriented in cardinal directions, was unique with respect to all of the other found rocks. It is observed that the stone was situated at exactly 99 feet (1.50 chains) north of the aforementioned post to the south, in conformity with the 1867 record. The stone was accepted as marking the corner and was replaced with a Harrison monument set in the position of the top, high point of the stone, as found. To protect the monument, several of the other rocks found in the vicinity were piled around the Harrison. The stone described in the 1880 record was not found. It is not clear why a different stone was established in 1880, when the stone described in the 1862 record appears to have remained in place, undisturbed. If two different positions were held for the corner, this could not be proved, as the stone called in the 1880 record was not found. This corner was originally established as wood post in 1829.



  
Kenneth E. Hedge, County Surveyor

  
James S. Swift, IN LS 20200054  
April 3, 2019

Washington Township

Section 4 T19N, R1W	Section 3 T19N, R1W
------------------------	------------------------



# SECTION CORNER RECORD

# NW 600-300

## BOONE COUNTY SURVEYOR'S OFFICE

State Plane grid coordinates NAD83 (2011):

Corner 1: North: 1777290.16 East: 3108929.71 (U.S. survey feet)

Corner 2: North: 1777290.13 East: 3108959.41 (U.S. survey feet)

Corner 1: INDOT Type B monument, flush

Corner 2: Mag nail with 'Boone County Surveyor' washer, flush

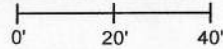
Indiana tie card references:

IN02\_T20NR1W33\_80 IN02\_T20NR1W34\_72

IN02\_T19NR1W04\_08 IN02\_T19NR1W03\_00

### CORNER WITNESS DETAIL

SCALE 1" = 40'



A - Boone County witness mark, flush,

43.6' to corner 1, 22.0' to corner 2

B - Mag nail set in S. side power pole, 2' a.g.,

69.0' to corner 1, 47.7' to corner 2

C - Mag nail set in N. side power pole, 2' a.g.,

124.3 to corner 1, 96.4' to corner 2

D - S.W. corner top of right-of-way marker,

50.7' to corner 1, 40.3' to corner 2

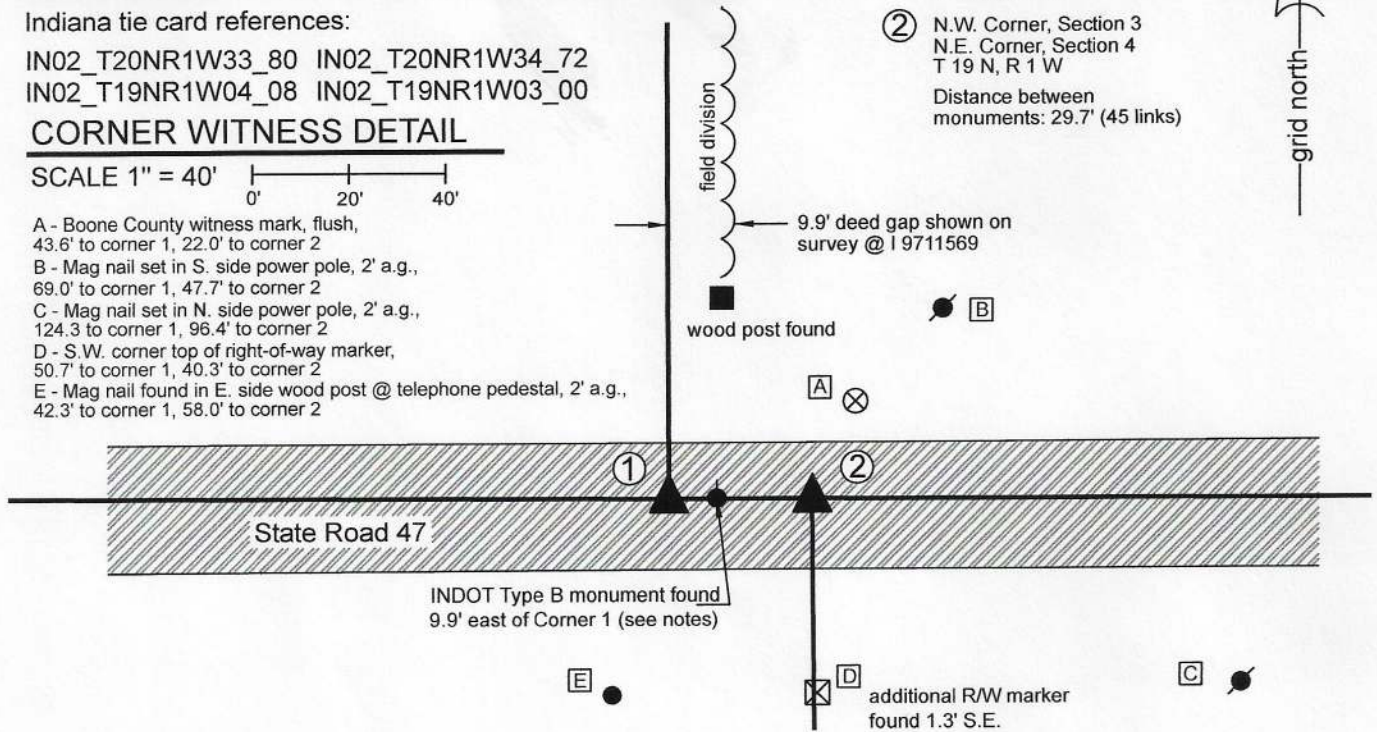
E - Mag nail found in E. side wood post @ telephone pedestal, 2' a.g.,

42.3' to corner 1, 58.0' to corner 2

① S.W. Corner, Section 34  
S.E. Corner, Section 33  
T 20 N, R 1 W

② N.W. Corner, Section 3  
N.E. Corner, Section 4  
T 19 N, R 1 W

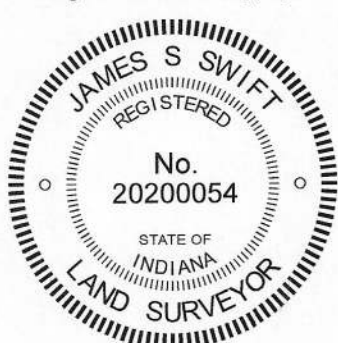
Distance between monuments: 29.7' (45 links)



The INDOT Type B Monument at Corner 1 was found and held as marking the corner. This position agrees with the position of a P.K. Nail shown as marking the corner on a BCS tie card dated June 22, 2005. Another INDOT Type B Monument was found at 9.9 feet east of the monument marking Corner 1. This monument does not represent the position of Corner 2. A surveyor's report produced for INDOT and recorded as Instrument 200700000086 in the Office of the Boone County Recorder shows, on page 26 of 33, that the easterly of the Type B monuments represents the northeast corner of section 4, T19N, R1W. This is not correct and is not in agreement with the 2005 BCS tie card, INDOT plans for the I-65 / S.R. 47 interchange or original federal field notes.

Both corners are original federal corners. Corner 1 was set in 1819 and Corner 2 was set in 1829, 45 links (29.7 feet) east of Corner 1. A BCS record dated October 21, 1862 states, with respect to Corner 1, "Reestablished from the corner of sects 3 & 4, T19. Trees both gone. Set two rocks. Under one 7x5x3. Top 9x8x7." A BCS record dated October 22, 1862 states, with respect to Corner 2, "Found stone at Corner." Both corners are shown on a BCS tie card dated June 22, 2005 with a separation of 29.70 feet, equal to the original offset of 45 links reported in the 1829 federal notes. A survey recorded as Instrument 9711589 in the Office of the Boone County Recorder shows a P.K. Nail found at Corner 1 and demonstrates a 9.90 foot deed gap east of the section line to the north of Corner 1. It is most likely that the additional INDOT Type B monument, shown as marking Corner 2 on the report recorded as Instrument 200700000086, was set in place of a monument which marked the easterly edge of the 9.90 foot deed gap. This monument does not mark Corner 2. Neither corner is specifically shown on the plans for the S.R. 47, Interstate 65 interchange ( F.Y. 1969, project no. I-65-5(35) 140. Sheet No. 25 ), though the plans show station information for the section lines to the north and south of the road. This information indicates a separation of approximately 22.5 feet. Two INDOT right-of-way markers were found on the south side of S.R. 47, one of which is approximately 1 foot east of the section line defined by Corner 2, the other being 1.3 feet southeasterly of the first. Uncertainties with respect to the position of Corner 2 and the south quarter corner of section 34, as shown on the aforementioned plans, is approximately 4 feet east-west.

The Type B monument at Corner 1 was held as found. Corner 2 was established at 29.70 feet east thereof on the township line as defined by Corner 1 and the south quarter corner of section 34 (see BCS Corner NW 600-250). A Mag nail was set at this position of September 8, 2020. The Type B monument 9.9 feet east of Corner 1 is noted but is not considered as marking either corner. This document will be presented to INDOT to request establishment of a more durable monument at Corner 2 during the next resurfacing project on S.R. 47.



*Kenneth E. Hedge*  
Kenneth E. Hedge, County Surveyor

*James S. Swift*  
James S. Swift, IN LS 20200054  
September 9, 2020

Washington Township

Section 33 T20N, R1W	Section 34 T20N, R1W
Section 4 T19N, R1W	Section 3 T19N, R1W



# SECTION CORNER RECORD

# NW 600-350

## BOONE COUNTY SURVEYOR'S OFFICE

State Plane grid coordinates NAD83 (2011):

Corner 1: North: 1777295.97 East: 3106292.41 (U.S. survey feet)  
Corner 2: North: 1777295.93 East: 3106311.05 (U.S. survey feet)

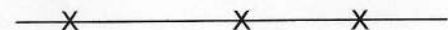
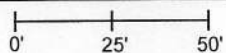
Corner 1: Indot type B monument, flush with adjacent road  
Corner 2: Mag nail with "Boone County Surveyor" washer, flush

Indiana tie card references:

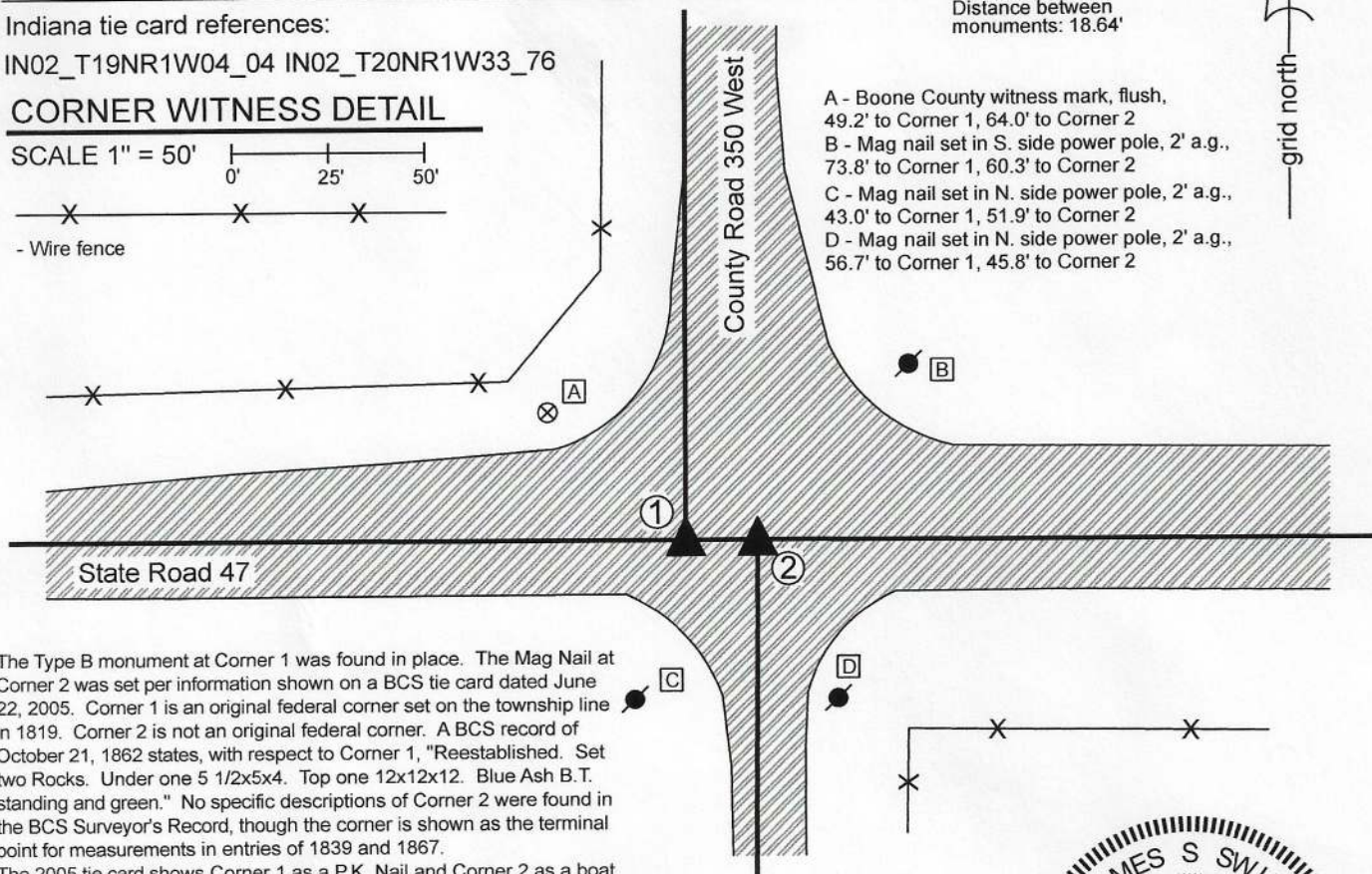
IN02\_T19NR1W04\_04 IN02\_T20NR1W33\_76

### CORNER WITNESS DETAIL

SCALE 1" = 50'



- Wire fence

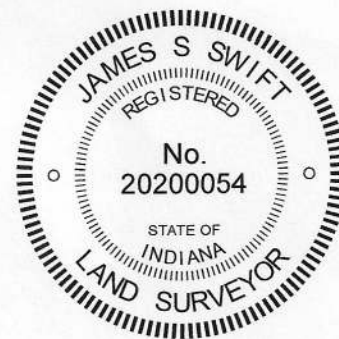


- ① South Quarter Corner Section 33, T 20 N, R 1 W INDOT Type B Monument
  - ② North Quarter Corner Section 4, T 19 N, R 1 W Mag Nail Set
- Distance between monuments: 18.64'

- A - Boone County witness mark, flush, 49.2' to Corner 1, 64.0' to Corner 2
- B - Mag nail set in S. side power pole, 2' a.g., 73.8' to Corner 1, 60.3' to Corner 2
- C - Mag nail set in N. side power pole, 2' a.g., 43.0' to Corner 1, 51.9' to Corner 2
- D - Mag nail set in N. side power pole, 2' a.g., 56.7' to Corner 1, 45.8' to Corner 2

The Type B monument at Corner 1 was found in place. The Mag Nail at Corner 2 was set per information shown on a BCS tie card dated June 22, 2005. Corner 1 is an original federal corner set on the township line in 1819. Corner 2 is not an original federal corner. A BCS record of October 21, 1862 states, with respect to Corner 1, "Reestablished. Set two Rocks. Under one 5 1/2x5x4. Top one 12x12x12. Blue Ash B.T. standing and green." No specific descriptions of Corner 2 were found in the BCS Surveyor's Record, though the corner is shown as the terminal point for measurements in entries of 1839 and 1867.

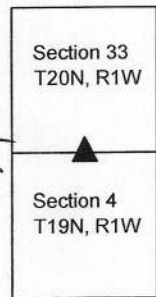
The 2005 tie card shows Corner 1 as a P.K. Nail and Corner 2 as a boat spike. Both corners are believed to have been removed during a 2006 paving project. Corner 1 was replaced with an INDOT Type B monument, as shown on a surveyor's report recorded as Instrument 200700000086 in the Office of the Boone County Recorder. Corner 2 was not replaced at that time. The 2005 tie card shows the corners at 18.64 feet apart with Corner 2 being in-line with the County Road to the south and Corner 1 being west of the County Road to the North. It is observed that Corner 1 generally lines up with the west edge of pavement for the County Road to the north. The 1939 aerial photo of this area shows a more distinct offset of the county roads than is visible today. It is known that significant improvements were made to the portion of the road north of S.R. 47 for purposes of providing transport and utilities to the former Old Indiana Fun Park. Conveyances to Boone County were not found, but it is believed that the roadway was expanded and shifted to the east. The deeds for the land adjoining this corner to the northeast and northwest (see Instruments 201100000585 and 201100000587, Boone County Recorder) appear to hold Corner 1 as shown on the 2005 tie card, calling for the north-south section line to be west of the center of the road. It is not specifically known how the offset distance of 18.64 feet was established. The average offset for the northeast and northwest corners of section 4, per the original federal field notes, is 28.7 feet. The corners as shown on the 2005 BCS tie card are held. Corner 1 was held as found and Corner 2 was established at 18.64 feet east on the township line as defined by Corner 1 and an INDOT Type B monument at the southeast corner of section 33. A mag nail was set at this position on September 8, 2020. This document will be presented to INDOT to request establishment of a more durable monument at Corner 2 during the next resurfacing project on S.R. 47.



*Kenneth E. Hedge*  
Kenneth E. Hedge, County Surveyor

*James S. Swift*  
James S. Swift, IN LS 20200054  
September 9, 2020

Washington Township





# SECTION CORNER RECORD

NW 600-400

## BOONE COUNTY SURVEYOR'S OFFICE

State Plane grid coordinates NAD83 (2011):

Corner 1: North: 1777297.42 East: 3103645.11 (U.S. survey feet)

Corner 2: North: 1777297.40 East: 3103672.75 (U.S. survey feet)

Corner 1: Mag nail with "Boone County Surveyor" washer, flush

Corner 2: INDOT Type B monument, flush with adjacent road

Indiana tie card references:

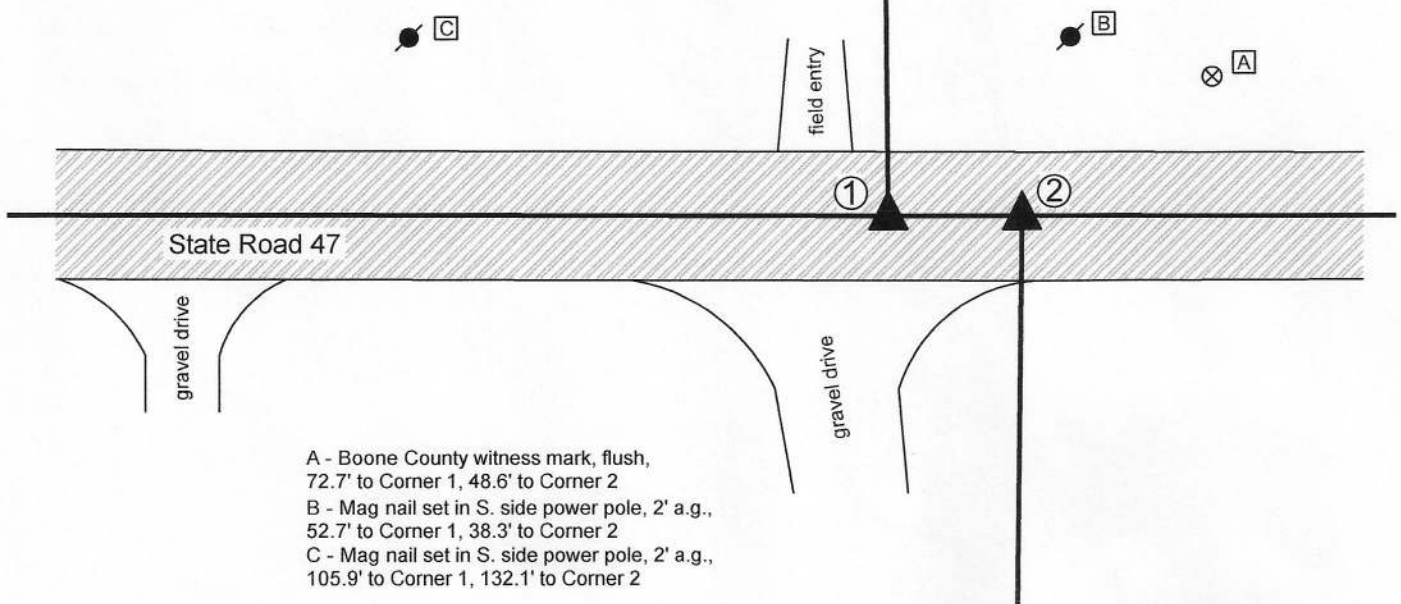
IN02\_T20NR1W33\_72 IN02\_T20NR1W32\_80

IN02\_T19NR1W05\_08 IN02\_T19NR1W04\_00

### CORNER WITNESS DETAIL

SCALE 1" = 40'

- ① S.E. Corner, Section 32  
S.W. Corner, Section 33  
T 20 N, R 1 W
  - ② N.W. Corner, Section 4  
N.E. Corner, Section 5  
T 19 N, R 1 W
- Distance between monuments: 27.64'  
Original offset = 42 links (27.72')



- A - Boone County witness mark, flush,  
72.7' to Corner 1, 48.6' to Corner 2
- B - Mag nail set in S. side power pole, 2' a.g.,  
52.7' to Corner 1, 38.3' to Corner 2
- C - Mag nail set in S. side power pole, 2' a.g.,  
105.9' to Corner 1, 132.1' to Corner 2

The INDOT Type B monument at Corner 2 was found in place and held as the corner. The Mag nail set at Corner 1 was set with respect to information shown on a previous BCS tie card dated June 22, 2005.

The original federal notes for Township 19 North, Range 1 West note an offset of 42 links east for the closing corner. A BCS Record of April 11-12, 1862, states, with respect to Corner 1, "Found stake set 42 links of Corner, Sects. 4 & 5." No specific descriptions of Corner 2 were found in the BCS Surveyor's record beyond the original establishment of the corner in 1829 and the reference in the 1862 record for Corner 1. A BCS tie card dated June 22, 2005 shows railroad spikes at both corners. It is believed that the railroad spike at Corner 2 was replaced with the Type B monument in 2006. The railroad spike at Corner 1 was not replaced with a monument at that time. Corner 1 was established on the prolongation of the township line as defined by Corner 2 and a Type B monument at the south quarter corner of Section 32 (see BCS Corner NW 600-350) at 27.64 feet, per the 2005 tie card. A Mag nail with washer was set at this position on August 27, 2020. No large scale excavation was performed as these corners fall in a state road. This documentation will be presented to INDOT to request the establishment of an INDOT section corner monument during the next resurfacing project on this part of S.R. 47.



*Kenneth E. Hedge*  
Kenneth E. Hedge, County Surveyor

*James S. Swift*  
James S. Swift, IN LS 20200054  
September 2, 2020

Washington Township

Section 32 T20N, R1W	Section 33 T20N, R1W
Section 5 T19N, R1W	Section 4 T19N, R1W