

# SECTION CORNER RECORD

NE 500-200

## BOONE COUNTY SURVEYOR'S OFFICE

State Plane grid coordinates NAD83 (2011):

North: 1772067.21 East: 3135099.37 (U.S. survey feet)

Type of monument: Harrison, 4" disk 'Section Corner'

Depth: Two inches above adjacent ground.

Indiana tie card references:

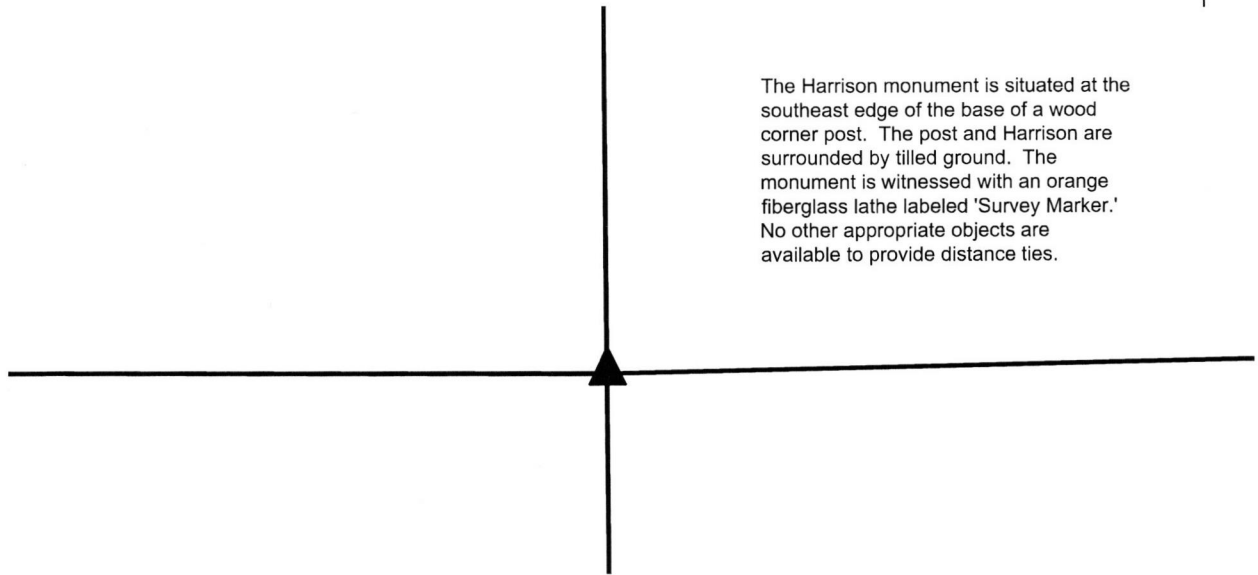
IN02\_T19NR1E05\_80 IN02\_T19NR1E04\_72

IN02\_T19NR1E08\_08 IN02\_T19NR1E09\_00



### CORNER WITNESS DETAIL

No scale



The Harrison monument is situated at the southeast edge of the base of a wood corner post. The post and Harrison are surrounded by tilled ground. The monument is witnessed with an orange fiberglass lathe labeled 'Survey Marker.' No other appropriate objects are available to provide distance ties.

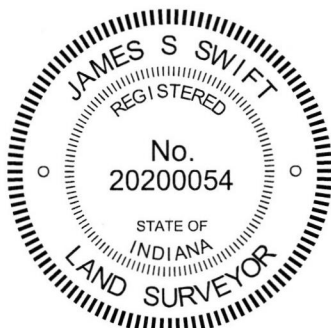
The Harrison monument was set in place of a stone found.

A BCS record of October 15, 1912 references a previous record of March 3, 1887 and states, with respect to this corner, "Re-est. from Oak witness, all gone except roots. Set Rock 10x16x12 +." No recent BCS tie cards were found referencing this corner.

Excavation was performed at this corner on November 28, 2017. Prior to excavation, a wood post was found with fencing cut off to the north, south and west, indicating the the post was formerly at the intersection of fences in those three directions. No standing fence is attached to the post and the post is isolated from other evidence, standing alone in the middle of a tilled field. The post is stable in the ground but leans substantially toward the northeast. The position of the post fits well with other corners, including another isolated post in the field 1/4 mile to the north. Excavation around the base of the post revealed a rock found at the southeast corner of the post. The stone was found to measure 10 inches by 16 inches by 7 inches. It is noted that a sheer edge exists on the rock, indicating the rock was previously of a larger size and split at some point. The dimensions of the rock are such that the sheer edge represents one edge which determines the 7 inch measurement. Hence, it is possible that the rock did previously match the 1887/1912 record dimensions, though that is not possible to confirm this without the remaining portion of the stone, which was not found.

The stone was held as marking the corner. The stone was removed and a Harrison monument was set in its place.

This corner was originally established as a wood post in 1821.



*Kenneth E. Hedge*  
Kenneth E. Hedge, County Surveyor

*James S. Swift*  
James S. Swift, IN LS 20200054  
January 10, 2018

Clinton Township

Section 5 T19N, R1E	Section 4 T19N, R1E
Section 8 T19N, R1E	Section 9 T19N, R1E

# SECTION CORNER RECORD

## BOONE COUNTY SURVEYOR'S OFFICE

NE 500-250

State Plane grid coordinates NAD83 (CORS96):

North: 1772118.05 East: 3137730.32 (U.S. survey feet)

Type of monument: Harrison, 4" disk 'Section Corner'

Depth: six inches below adjacent gravel road surface

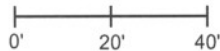
Indiana tie card references:

IN02\_T19NR1E04\_76

IN02\_T19NR1E09\_04

### CORNER WITNESS DETAIL

SCALE 1" = 40'

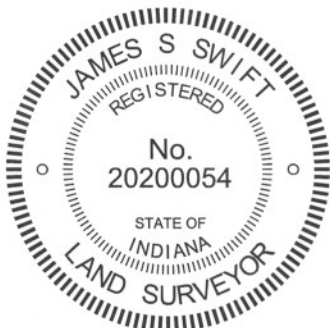
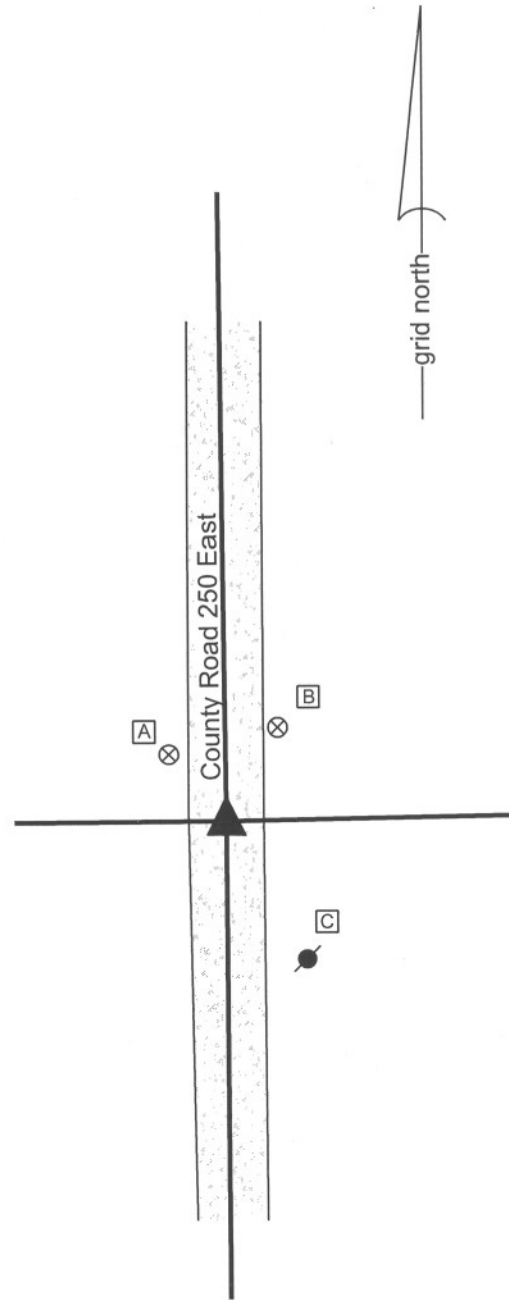


- A - Boone County witness mark, flush, 18.38'
- B - Boone County witness mark, flush, 22.29'
- C - Mag nail set in N.W. side power pole, 2' a.g., 31.32'

Boone County witness mark is a 3/8" diameter x 2' long rebar bearing a metal cap stamped "Boone County Witness Point."

The harrison monument was set in place of a rebar and a section of railroad rail found. A BCS record of December 31, 1869 states "Re-est. Set a Rock 18.12.7 +. Beech bearing tree as before." A undated BCS tie card states "No stone." This tie card is likely from the late 1960s. A BCS tie card dated June 15, 1975 states "Stone found - set rod." A BCS tie card dated September 30, 2005 shows the corner as a railroad rail with no documentation of source.

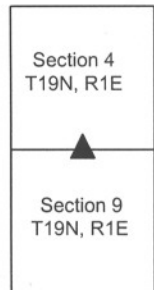
This corner was excavated on June 15, 2012. Prior to excavation a section of railroad rail was found at 2 inches below grade. The rail was clearly not vertical, leaning with the top towards the south. A 5/8 inch rebar was found at 9 inches north of the top of the rail. The rebar and the rail were removed, and it was determined that the rebar had been approximately over the bottom of the rail. No further evidence was found. It is most likely that the stone was removed in 1975 and replaced with the rebar, referred to as "rod" on the tie card. The rail was most likely set in association with the creation of the undated tie card. The undated tie card and the 1975 tie card both show the corner as being centered between posts on the east and west sides of the road. The coincident positions of the rail and rebar agree with these representations. However, it is not clear how the undated card called for "no stone" while the 1975 card called for a stone found. The road depth is minimal and the bottom of the rail was well below the depth at which a stone would be expected to be situated. Nonetheless, it is known that it was a common practice for BCS field crews in 1975 to remove a stone, if found, and replace it with a steel monument. The call for "stone found - set rod" supports this. The position of the rebar, as found, was held as marking the corner. Hence, the position of the bottom of the rail was also held as the corner, which point is 9 inches north of the position of the top of the rail and the representation of the corner on the 2005 tie card. All existing monuments were removed and replaced with a harrison monument in the position of the rebar. This corner was originally established as a wood post in June, 1822.



*Kenneth E. Hedge*  
 Kenneth E. Hedge, County Surveyor

*James S. Swift*  
 James S. Swift, IN LS 20200054  
 January 15, 2013

Clinton Twp



# SECTION CORNER RECORD

# NE 500-300

## BOONE COUNTY SURVEYOR'S OFFICE

State Plane grid coordinates NAD83 (2011):

North: 1772176.19 East: 3140370.63 (U.S. survey feet)

Type of monument: 5/8" diameter rebar, with aluminum cap stamped 'Boone County Surveyor'

Depth: Fourteen inches below surrounding ground

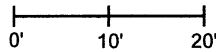
Indiana tie card references:

IN02\_T19NR1E03\_72 IN02\_T19NR1E04\_80

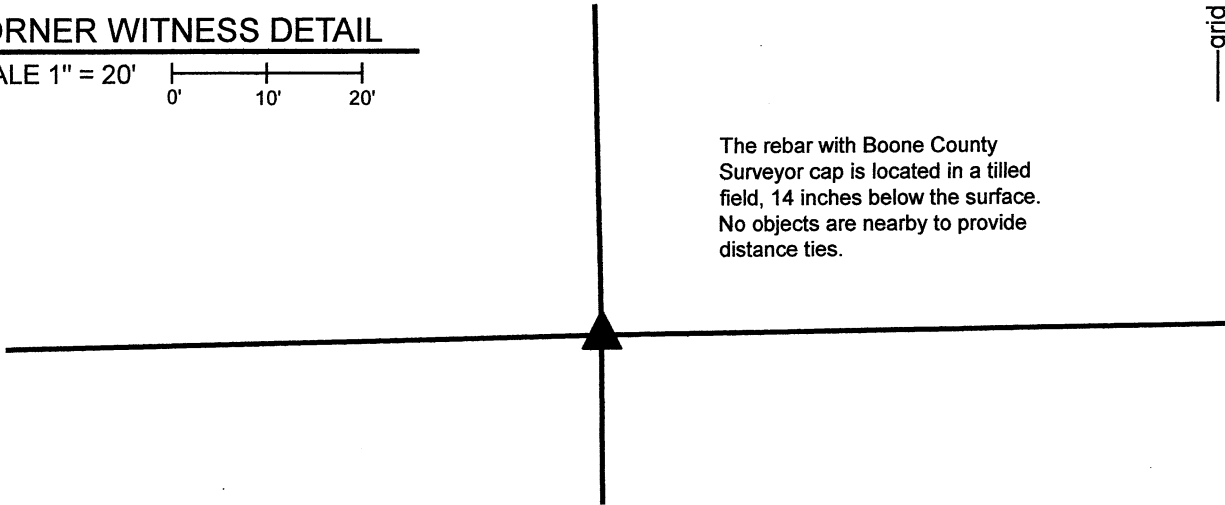
IN02\_T19NR1E09\_08 IN02\_T19NR1E10\_00

### CORNER WITNESS DETAIL

SCALE 1" = 20'



The rebar with Boone County Surveyor cap is located in a tilled field, 14 inches below the surface. No objects are nearby to provide distance ties.

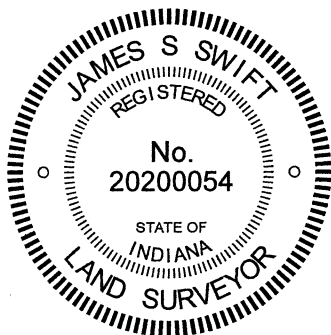


The rebar with Boone County Surveyor cap was set at a computed position.

No specific descriptions of this corner were found in the BCS Surveyor's Record. No recent BCS tie cards were found, nor were surveys recorded in the Office of the Boone County Recorder found referencing the corner.

This corner falls in a tilled agricultural field and no physical evidence of the corner was found in the immediate vicinity. The corner is referenced in the deed for the property which surrounds it as well as in the exception for a property to the west. The description of a 19.0301-acre parcel included in Instruments 20150003498 and 2017004207 explicitly references this corner, as tied to the northwest and southeast corners of the northeast quarter of Section 9. These descriptions are clearly produced by modern survey, with bearings to the nearest second and distances to the nearest hundredth of a foot. The survey which created the descriptions was not found, but the described geometry fits precisely with the relative positions of the monuments at the southeast and northwest corners of the northeast quarter of Section 9 (see BCS Corners NE 500-250 and NE 450-300) as well as a 1/2-inch diameter rebar found in a slightly disturbed condition at a point on the east line of said northeast quarter, described as being 1327.34 feet south of the subject corner. Uncertainties of less than 0.2 foot in all directions were observed with respect to the relative positions of these three monuments and the geometry described in the calls of the 19.0301-acre tract. It is not known what evidence was held to determine the position of the corner at the time this description was created. However, evidence was not found which directly contradicts the position of the corner, as so described. Fencing which may have been along the south edge of a wooded area to the east of the corner appears to have been removed and no reliable, hard evidence of the line between the southwest quarter of Section 3 and northwest quarter of Section 10 was found. The 1/2-inch diameter rebar mentioned above was found along the line between the northeast quarter of Section 9 and northwest quarter of Section 10, as was fencing to the south and a north-segment of Elizaville Road.

The call for the subject corner in the deed descriptions referenced above was held as the best available evidence of the corner. The position of the corner was computed with respect to this call as explained above. A 30-inch length of 5/8-inch diameter rebar was set at this position of December 8, 2021. The rebar was set at 14 inches below grade to avoid being disturbed by agricultural equipment.



*Kenneth E. Hedge*  
Kenneth E. Hedge, County Surveyor

*James S. Swift*  
James S. Swift, IN LS 20200054  
December 15, 2021

Clinton Township

Section 4 T19N, R1E	Section 3 T19N, R1E
Section 9 T19N, R1E	Section 10 T19N, R1E

# SECTION CORNER RECORD

# NE 550-200

## BOONE COUNTY SURVEYOR'S OFFICE

State Plane grid coordinates NAD83 (2011):

North: 3135073.34 East: 1774713.45 (U.S. survey feet)

Type of monument: 24" length of 5/8-inch diameter rebar with aluminum cap stamped 'Boone County Surveyor'

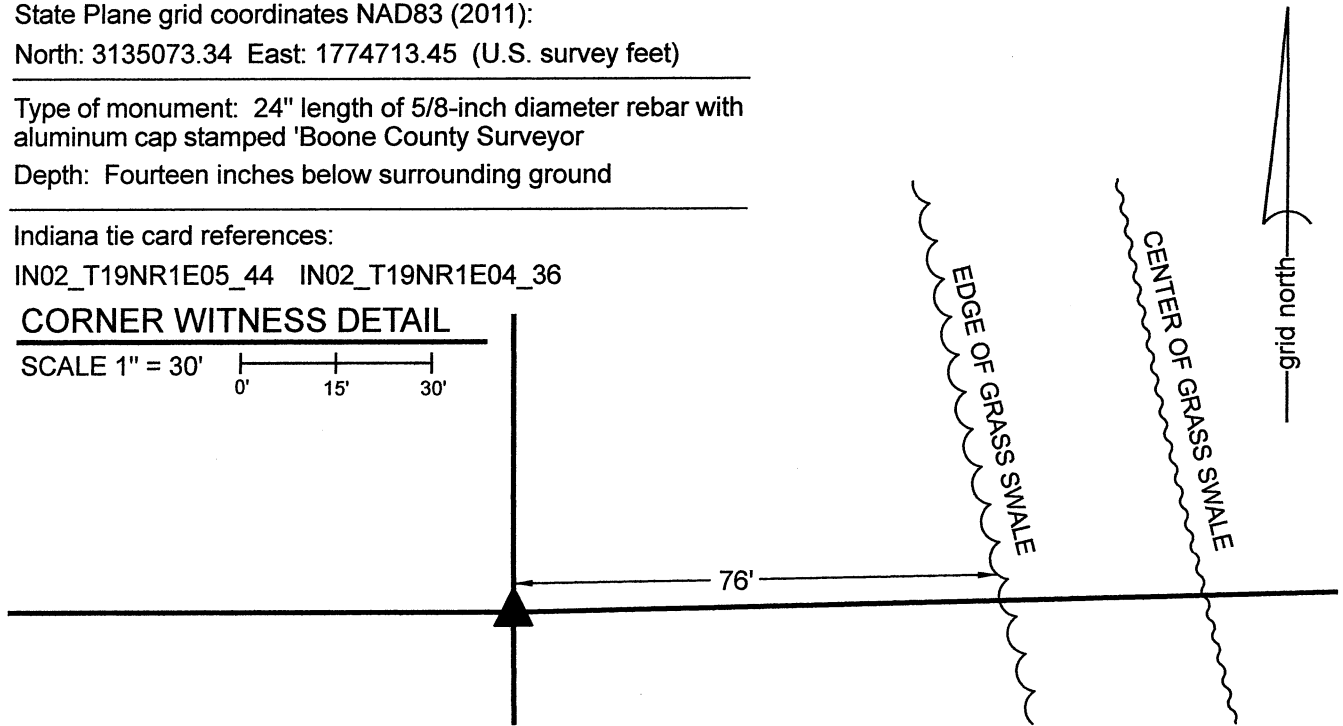
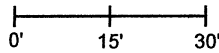
Depth: Fourteen inches below surrounding ground

Indiana tie card references:

IN02\_T19NR1E05\_44 IN02\_T19NR1E04\_36

### CORNER WITNESS DETAIL

SCALE 1" = 30'



The rebar with Boone County cap was set at a calculated position.

A BCS record dated October 5, 1912 states, with respect to this corner, "Re-est. by line and measure. Set Rock 10x10x16 +." This entry in the record gives no further data about what line or measurement was held to determine the position of the corner.

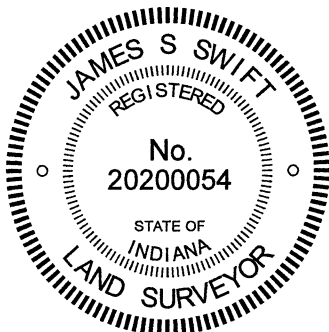
No recent BCS tie cards were found referencing the corner nor were any surveys recorded in the Boone County Recorder's Office found referencing the corner.

The position of this corner has been investigated several times from 2017 to 2021. The corner falls in a tilled field and no physical evidence was found in the immediate vicinity of the corner. Reliable accessory evidence was found for adjacent corners being approximately 1/2 and 1/4 mile to the south, east, west and north, respectively.

Analysis of the various accessory evidence yielded the following observations: A computed position for the corner which is established at the intersection of the northerly prolongation of a line from a Harrison monument at the southeast corner of Section 5 through a wood post approximately 1/4 mile north thereof and the westerly prolongation of a line from a railroad rail marking the BCS referenced center quarter corner of Section 4 through a wood post approximately 1/4 mile west thereof fits remarkably well with most of the available evidence. Holding this position for the corner creates the situation wherein the first mentioned wood post (held for the east-west line) is 1 foot east of the midpoint of the line connecting the rail and computed position and the second mentioned wood post (held for the north-south line) is 2 feet south of the midpoint of the line connecting the Harrison monument and computed position. Also, the computed position falls approximately 1 foot south of the easterly prolongation of a line connecting a Harrison monument at the center of Section 5 with a rail in County Road 175 East (said rail having been set in place of a stone in 1975) marking the BCS referenced southeast corner of the northwest quarter of Section 5. This rail is approximately 9.5 feet east and 0.5 foot north of the midpoint of the line connecting the computed position with the Harrison monument at the center of Section 5. (Note, for that particular quarter-quarter corner, the rail should be held as it is referenced by this office and replaced a stone found marking the corner). The evidence which fits the least well with the computed position is a wood post approximately 1/4 mile north. This post falls approximately 5 feet east of the line connecting the computed position with an INDOT Type B monument marking the northwest corner of Section 4. It is noted that this particular post appears to be quite new and does not represent the older evidence which the other two wood posts represent.

Of the various potential positions for the corner, the computed position discussed above represents the best-fit with the available evidence. Probing and manual excavation in the immediate vicinity of the corner did not reveal the stone mentioned in the 1912 record or any other physical evidence of the corner. The computed position was held and a rebar with metal cap stamped 'Boone County Surveyor' was set at this position, 14 inches deep in the tilled field, on November 22, 2021.

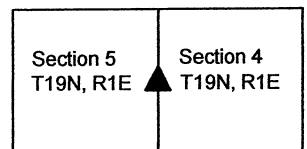
This corner was originally established as a wood post in 1822.



*Kenneth E. Hedge*  
Kenneth E. Hedge, County Surveyor

*J. S. Swift*  
James S. Swift, IN LS 20200054  
December 1, 2021

Clinton Township



# SECTION CORNER RECORD

NE 550-300

## BOONE COUNTY SURVEYOR'S OFFICE

State Plane grid coordinates NAD83 (CORS96):

North: 1774813.74 East: 3140306.40 (U.S. survey feet)

Type of monument: Harrison, 4" disk 'Section Corner'

Depth: two inches above adjoining ground

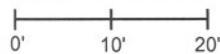
Indiana tie card references:

IN02\_T19NR1E04\_44

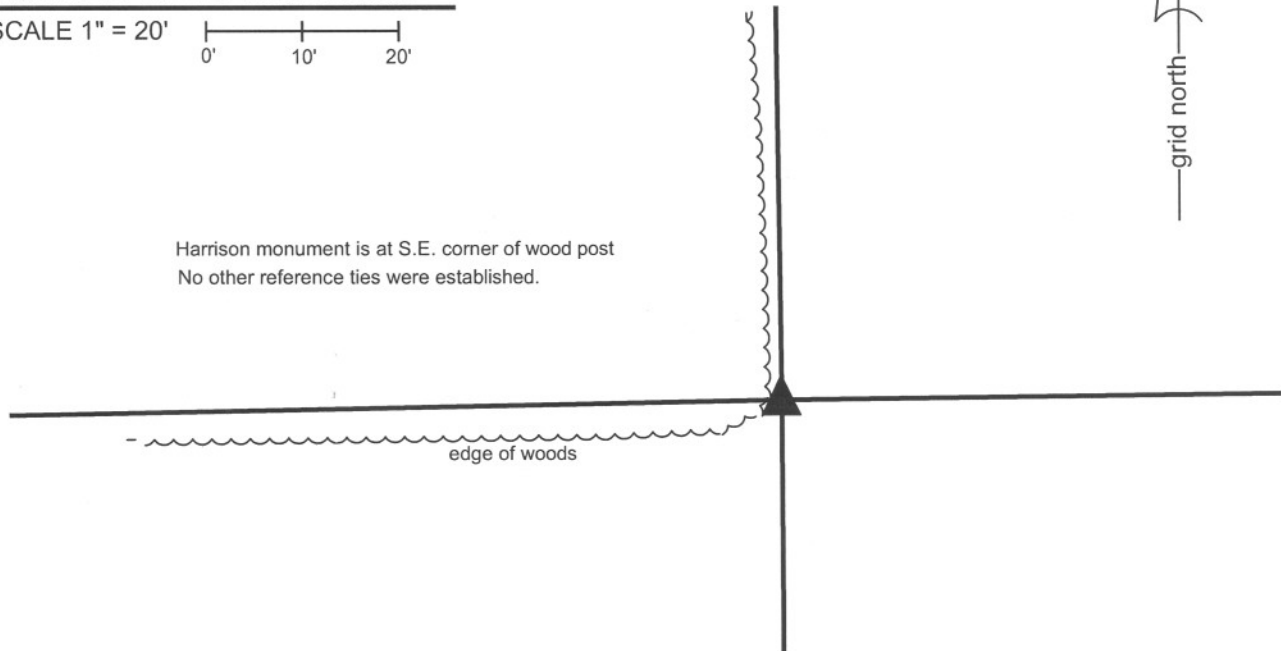
IN02\_T19NR1E03\_36

### CORNER WITNESS DETAIL

SCALE 1" = 20'



Harrison monument is at S.E. corner of wood post  
No other reference ties were established.

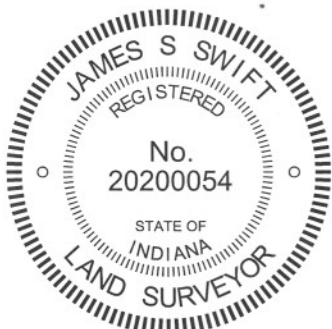


The harrison monument was set in place of a harrison monument found.

No specific descriptions of this corner were found in the BCS Surveyor's Record beyond the original establishment of the corner in 1822. A BCS tie card dated September 1, 1995 shows the corner as a rebar set on the south side of a corner post. A BCS tie card dated August 19, 2005 shows the corner as a harrison monument at the base of a fence corner post.

This corner was excavated on November 1, 2011. A harrison monument was found at the East edge of a wood corner post. The post was broken, as found, but was clearly the corner for fences to the north and west. The harrison monument was loose, broken off at 8 inches deep and leaning to the west. Various rocks were found around and near the post but none were identifiable as a section corner stone. As noted above, no specific descriptions of the corner were found in the old BCS Surveyor's Record. The harrison monument was replaced in the position of the monument as it would have been in a vertical orientation. A new harrison monument was set in a more stable manner.

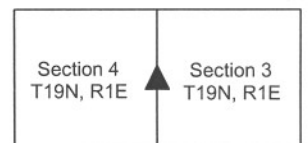
This corner was originally established as a wood post in June, 1822.



*Kenneth E. Hedge*  
Kenneth E. Hedge, County Surveyor

*James S. Swift*  
James S. Swift, IN LS 20200054  
March 1, 2012

Clinton Township



# SECTION CORNER RECORD

NE 600-200

## BOONE COUNTY SURVEYOR'S OFFICE

State Plane grid coordinates NAD83 (2011):

Corner 1: North: 1777408.36 East: 3134886.33 (U.S. survey feet)

Corner 2: North: 1777410.73 East: 3135063.54 (U.S. survey feet)

Type of monument: INDOT Type B, plug in monument box

Depth: flush with adjacent road surface

Indiana tie card references:

IN02\_T20NR1E32\_80 IN02\_T20NR1E33\_72

IN02\_T19NR1E05\_08 IN02\_T19NR1E04\_00

### CORNER WITNESS DETAIL

SCALE 1" = 60'

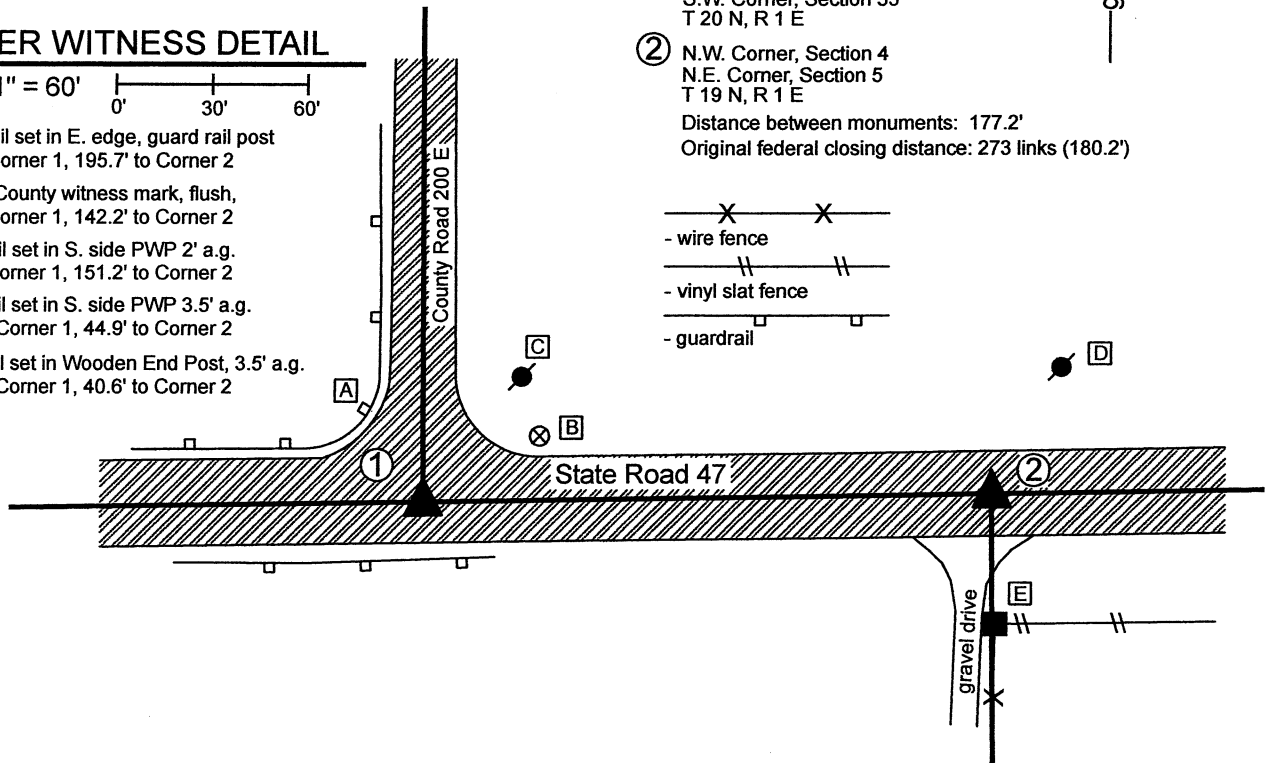
A - Mag Nail set in E. edge, guard rail post  
33.6' to Corner 1, 195.7' to Corner 2

B - Boone County witness mark, flush,  
41.6' to Corner 1, 142.2' to Corner 2

C - Mag nail set in S. side PWP 2' a.g.  
49.4' to Corner 1, 151.2' to Corner 2

D - Mag nail set in S. side PWP 3.5' a.g.  
203.2' to Corner 1, 44.9' to Corner 2

E - Mag nail set in Wooden End Post, 3.5' a.g.  
182.6' to Corner 1, 40.6' to Corner 2



① S.E. Corner, Section 32  
S.W. Corner, Section 33  
T 20 N, R 1 E

② N.W. Corner, Section 4  
N.E. Corner, Section 5  
T 19 N, R 1 E

Distance between monuments: 177.2'

Original federal closing distance: 273 links (180.2')

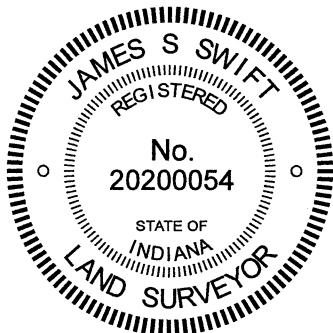
The INDOT Type B monuments were found in place.

A BCS record of June 2-3, 1862 states, with respect to Corner 1, "Set two rocks. One is 7.5 by 7 X. Top rock 28.18 by 10 marked 1." No specific descriptions of Corner 2 were found in the BCS Surveyor's Record beyond the original establishment of the corner as a wood post in 1822 at a point 273 links east of the post found at Corner 1.

A BCS tie card dated 2004 shows both corners as P.K. Nails with washers. A subsequent BCS tie card dated June 22, 2005 shows both corners as Type "C" Monument, in positions which agree precisely with the P.K. Nails shown on the previous tie card.

The INDOT monuments, being Type B monuments (brass plug in monument box), were found in good condition in positions which agree with the previous BCS tie cards. These corners were not excavated, as they fall in a state highway. The Type B monuments were held as marking the respective corners. Corner 1 agrees with local evidence in the form of being at the intersection of the east-west state road and the county road to the north. Corner 2 agrees with local evidence, being in the center of the east-west state road, in line with a fence to the south.

Corner 1 was originally established as a wood post in 1819. Corner 2 was originally established as a wood post in 1822.



*Kenneth E. Hedge*  
Kenneth E. Hedge, County Surveyor

*James S. Swift*  
James S. Swift, IN LS 20200054

January 12, 2020

Clinton Township

Section 32 T20N, R1E	Section 33 T20N, R1E
Section 5 T19N, R1E	Section 4 T19N, R1E

# SECTION CORNER RECORD

# NE 600-250

## BOONE COUNTY SURVEYOR'S OFFICE

State Plane grid coordinates NAD83 (2011):

North: 1777443.52 East: 3137516.38 (U.S. survey feet)

North: 1777445.68 East: 3137668.71 (U.S. survey feet)

Type of monument: INDOT Type B, plug in monument box

Depth: Flush with adjacent road surface

Indiana tie card references:

IN02\_T20NR1E33\_76 IN02\_T19NR1E04\_04

① South Quarter Corner  
Section 33, T 20 N, R 1 E  
INDOT Type B monument found

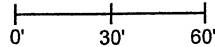
② North Quarter Corner  
Section 4, T 19 N, R 1 E  
INDOT Type B monument found

Distance between monuments: 152.3'  
Average federal closing: 233 links = 153.8'

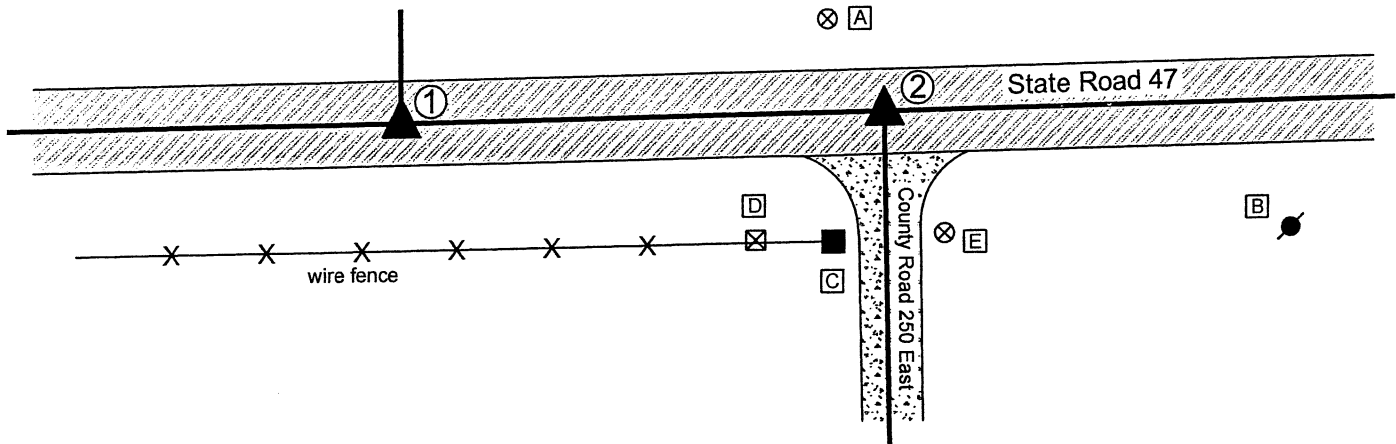


### CORNER WITNESS DETAIL

SCALE 1" = 60'



- A - Boone County witness mark, flush, 137.9' to Corner 1, 33.8' to Corner 2,
- B - Mag nail set in W. side power pole, 2' a.g., 281.5' to Corner 1, 132.4' to Corner 2
- C - Mag nail set in N. side wooden end post, 2' a.g., 141.3' to Corner 1, 43.6' to Corner 2
- D - North East Corner Right of Way monument 117.8' to Corner 1, 56.9' to Corner 2
- E - Benchmark, no disk, rebar in concrete, 2" a.g., 174.8' to Corner 1, 42.5' to Corner 2



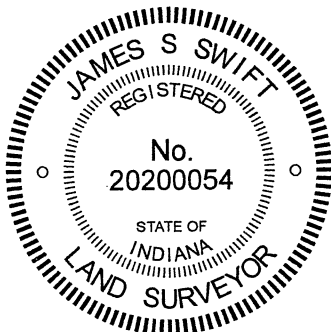
The INDOT Type B monuments were found in place.

A BCS record of March 14, 1873 states, with respect to Corner 1, "Set Rock 13.9.5 +." A BCS record of January 19, 1836 shows Corner 2 with no reference of what monument may have been set or held. A BCS record of April 7, 1855 states, with respect to Corner 2, "Stone in the road."

A BCS tie card dated 2004 shows both corners as P.K. Nails with washers. A subsequent BCS tie card, dated June 22, 2005, shows both corners as Type "C" Monuments in the same positions as the Nails shown on the previous tie card.

The monuments found, being INDOT Type 'B' monuments appear to be the same monuments, in the same positions, as those shown on the 2005 tie cards. The separation of the monuments is 1.5 feet less than the average of the federal closing distances at the northeast and northwest corners of Section 4. The position of the monument at Corner 2 agrees with local evidence of the corner, being at the intersection of the approximate centers of the east-west state road and the county road to the south. No evidence of Corner 1 beyond the east-west state road was found in the immediate vicinity of the corner. The positions of the corners fit well with the relative positions of proximate corners to the east and west.

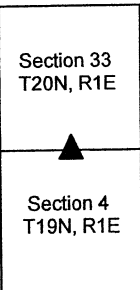
No excavation was performed at these corners, as they fall in a state highway. The existing monuments are held as the best available evidence of the respective corners. Corner 1 was originally set as a wood post in 1819. Corner 2 is not an original federal corner.



*Kenneth E. Hedge*  
Kenneth E. Hedge, County Surveyor

*James S. Swift*  
James S. Swift, IN LS 20200054  
January 26, 2021

Clinton Township



# SECTION CORNER RECORD

# NE 600-300

## BOONE COUNTY SURVEYOR'S OFFICE

State Plane grid coordinates NAD83 (2011):

Corner 1: North: 1777482.45 East: 3140144.30 (U.S. survey feet)

Corner 2: North: 1777484.65 East: 3140271.66 (U.S. survey feet)

Type of monument: INDOT Type B, plug in monument box

Depth: Flush with adjacent road surface

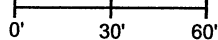
Indiana tie card references:

IN02\_T20NR1E33\_80 IN02\_T20NR1E34\_72

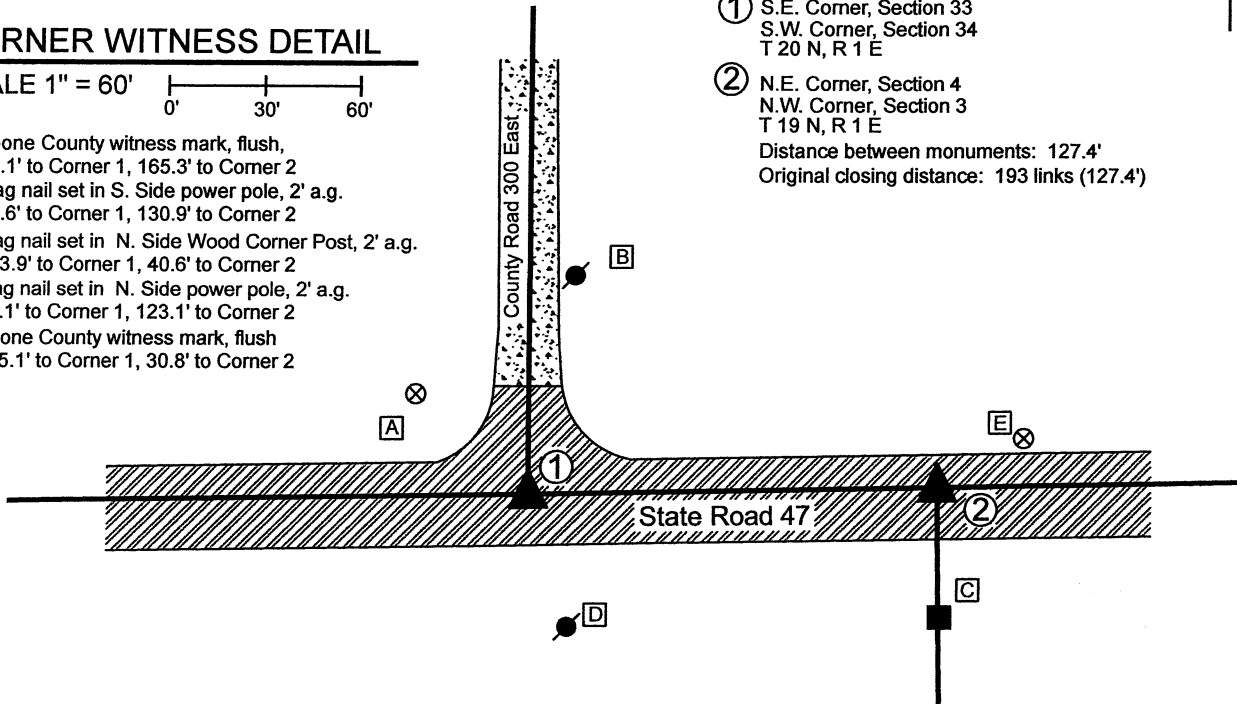
IN02\_T19NR1E04\_08 IN02\_T19NR1E03\_00

### CORNER WITNESS DETAIL

SCALE 1" = 60'



- A - Boone County witness mark, flush, 47.1' to Corner 1, 165.3' to Corner 2
- B - Mag nail set in S. Side power pole, 2' a.g. 69.6' to Corner 1, 130.9' to Corner 2
- C - Mag nail set in N. Side Wood Corner Post, 2' a.g. 133.9' to Corner 1, 40.6' to Corner 2
- D - Mag nail set in N. Side power pole, 2' a.g. 43.1' to Corner 1, 123.1' to Corner 2
- E - Boone County witness mark, flush 155.1' to Corner 1, 30.8' to Corner 2



① S.E. Corner, Section 33  
S.W. Corner, Section 34  
T 20 N, R 1 E

② N.E. Corner, Section 4  
N.W. Corner, Section 3  
T 19 N, R 1 E

Distance between monuments: 127.4'  
Original closing distance: 193 links (127.4')



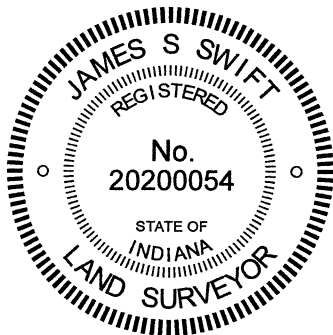
The INDOT Type B monuments were found in place and held as marking the respective corners.

A BCS record of April 7, 1855 states, with respect to Corner 2, "Stone in Road." A BCS record of March 14, 1873 states, with respect to Corner 1, "Found from corner of Sects 4 & 3 where we set the rock deeper and placed one under it, 12.8.6." No distance is provided in these records to indicate the separation of the two monuments, though it is noted that the original federal closing distance recorded in 1822 is 193 links or 127.4 feet.

A BCS tie card dated 2004 shows both corners as P.K. Nail with washers. A subsequent BCS tie card dated June 22, 2005 shows both corners as INDOT Type "C" Monuments, in positions which agree precisely with the P.K. Nails shown on the previous tie card.

The INDOT monuments, being Type B monuments (brass plug in monument box), were found in good condition in positions which agree with the 2005 BCS tie card. These corners were not excavated as the fall in a state highway. The Type B monuments were held as marking the respective corners. Corner 1 agrees with local evidence in the form of being at the intersection of the east-west state road and the county road to the north. Corner 2 agrees with local evidence in the form of being in the center of the east-west state road, immediately north of an old wood corner post on the south side of the road. It is noted that the two corners are separated by the original federal closing distance of 193 links or 127.4 feet.

Corner 1 was originally established as a wood post in 1819. Corner 2 was original established as a wood post in 1822.



*Kenneth E. Hedge*  
Kenneth E. Hedge, County Surveyor

*James S. Swift*  
James S. Swift, IN LS 20200054

January 12, 2020

Clinton Township

Section 33 T20N, R1E	Section 34 T20N, R1E
Section 4 T19N, R1E	Section 3 T19N, R1E