

# SECTION CORNER RECORD

NW 550-800

## BOONE COUNTY SURVEYOR'S OFFICE

State Plane grid coordinates NAD83 (2011):

North: 1774759.94 East: 3082548.57 (U.S. survey feet)

Type of monument: Harrison, 4" disk 'Section Corner'

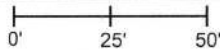
Depth: Flush to North, 4 inches above ground to South

Indiana tie card references:

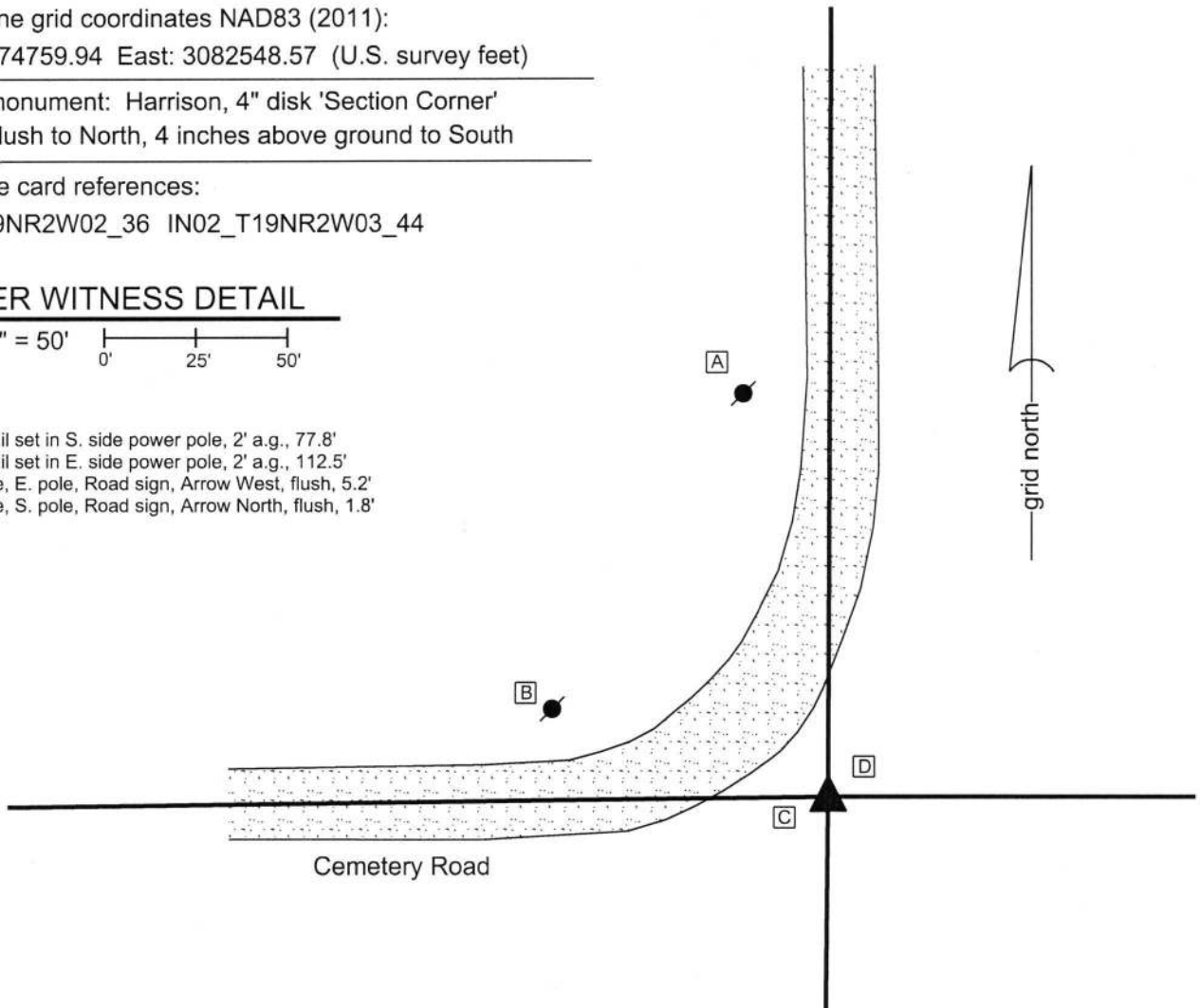
IN02\_T19NR2W02\_36 IN02\_T19NR2W03\_44

### CORNER WITNESS DETAIL

SCALE 1" = 50'



- A - Mag nail set in S. side power pole, 2' a.g., 77.8'
- B - Mag nail set in E. side power pole, 2' a.g., 112.5'
- C - E. edge, E. pole, Road sign, Arrow West, flush, 5.2'
- D - S. edge, S. pole, Road sign, Arrow North, flush, 1.8'



The Harrison monument was set in place of a rebar found.

A BCS record of February 21, 1880 states, with respect to this corner, "Reest. at intersection of lines where set rock 14,12,8 +." No recent BCS tie cards were found referencing this corner.

This corner was excavated on November 3, 2017. Prior to excavation, a 1/2 inch diameter rebar was found with a yellow plastic cap stamped 'Dodge SO288' amidst a large pile of rocks in line with the center of Cemetery Road to the north and west. The position of the rebar is approximately 6 feet north of a position computed proportionally with respect to the original distances for the line between sections 2 and 3, as reported in the original government notes of 1829. It is noted that the final position for neither of the section corners to the north or south has been determined. The rebar fits with the local evidence of the corner in the form of the roadway to the north and west. A stone which matches the dimensions of the rock called in the 1880 record was found amidst the large pile of rocks at the corner. The stone was found haphazardly situated amidst the pile of rocks and did not appear to be fixed in a position to mark the corner. The record stone is therefore believed to be disturbed and displaced. The rebar was held as marking the corner and was replaced with a Harrison monument in the same position.

This corner was originally established as a wood post in 1829.



*Kenneth E. Hedge*  
Kenneth E. Hedge, County Surveyor

*James S. Swift*  
James S. Swift, IN LS 20200054  
November 21, 2017

Sugar Creek Township

Section 3 T19N, R2W	Section 2 T19N, R2W
------------------------	------------------------

# SECTION CORNER RECORD

NW 550-900

## BOONE COUNTY SURVEYOR'S OFFICE

State Plane grid coordinates NAD83 (2011):

North: 1774688.55 East: 3077228.06 (U.S. survey feet)

Type of monument: Harrison, 4" disk 'Section Corner'

Depth: Flush with adjacent road surface

Indiana tie card references:

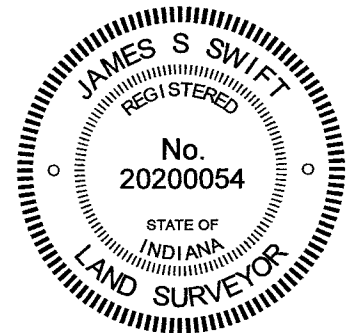
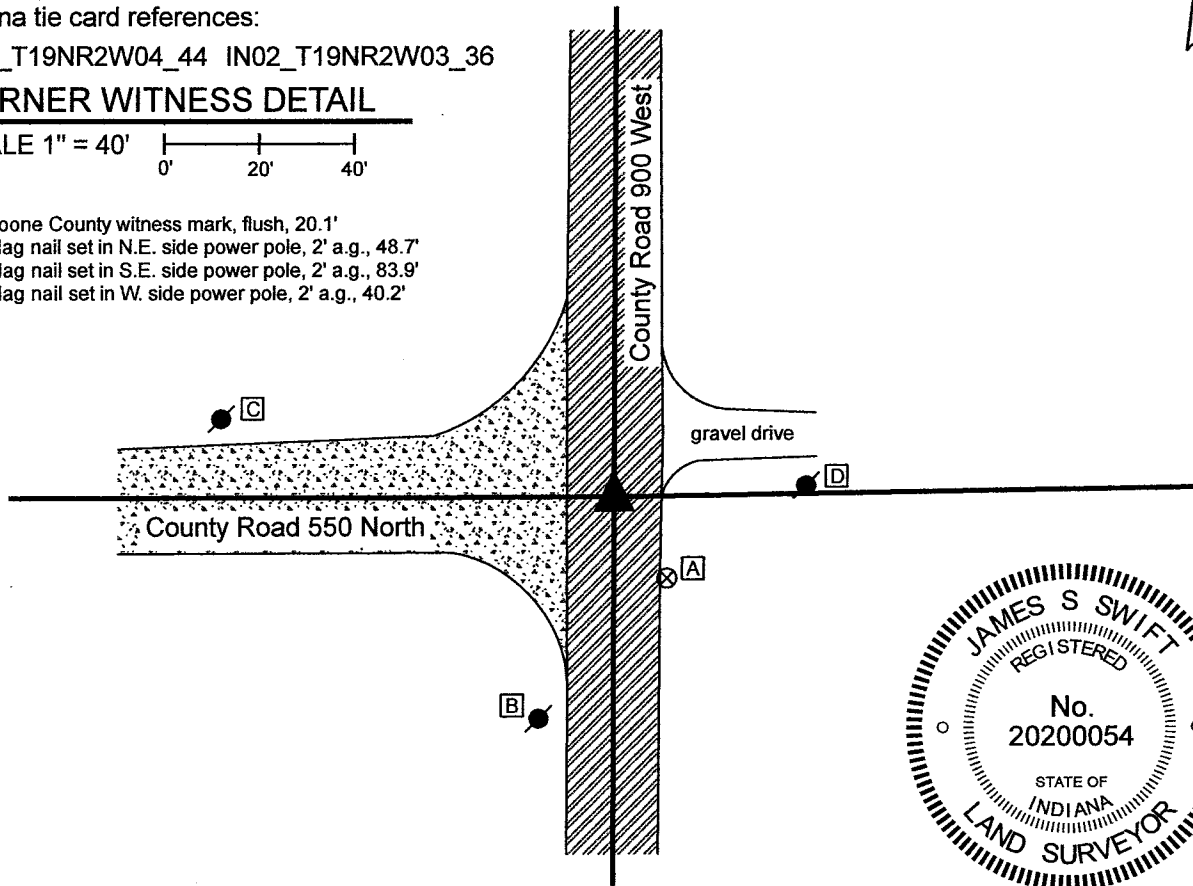
IN02\_T19NR2W04\_44 IN02\_T19NR2W03\_36

### CORNER WITNESS DETAIL

SCALE 1" = 40'



- A - Boone County witness mark, flush, 20.1'
- B - Mag nail set in N.E. side power pole, 2' a.g., 48.7'
- C - Mag nail set in S.E. side power pole, 2' a.g., 83.9'
- D - Mag nail set in W. side power pole, 2' a.g., 40.2'



The Harrison monument was set directly over the top of a vertical section of railroad rail found.

A BCS record of March 9-10, 1857 states, with respect to this corner, "Reest. Set Rock 10,14." A BCS tie card dated August 28, 1969 states, "Stone Located. Replaced RRR." This statement is interpreted to mean that the 1969 BCS field crew found a stone marking the corner and replaced it with a vertical section of railroad rail. The corner is shown as a '3/8" rebar found per county reference ties' on a survey by Brian L. Haggard recorded in Survey Book 4, page 34. It is shown as a 'railroad rail per BCSR, Mag Nail Found over top' on a survey by Richard L. Fidler recorded in Survey Book 17, page 6 and is shown as a '1/2-inch diameter rebar found' on a survey by Jonathon E. Hause recorded in Survey Book 21, pages 67-68, all as recorded in the Office of the Boone County Recorder.

This corner was excavated on August 6, 2021. Given the statement of "Stone Located. Replaced RRR" on the 1969 BCS tie card, significant excavation was not performed, as it has been observed at many other corners throughout the county that such a statement indicates that the stone was removed when found and replaced with a railroad rail. Prior to the minor excavation, a 1/2-inch diameter rebar was found at 3 inches deep in a hole in the asphalt at the intersection of the two county roads. Excavation revealed the railroad rail (RRR) called for on the 1969 BCS tie card at 8 inches deep. It was evident that the rebar had been driven along the east edge of the rail. The rebar was removed and a Harrison monument was set directly over the top, center of the rail, anchored to the rail with concrete. The top of the rebar, as found, had been 0.1 foot east of this position. This corner was originally established as a wood post in 1829.

Kenneth E. Hedge, County Surveyor

James S. Swift, IN LS 20200054  
August 20, 2021

Sugar Creek Township

Section 4 T19N, R2W	Section 3 T19N, R2W
------------------------	------------------------

# SECTION CORNER RECORD

NW 600-800

## BOONE COUNTY SURVEYOR'S OFFICE

State Plane grid coordinates NAD83 (2011):

North: 1777375.70 East: 3082556.81 (U.S. survey feet)

Type of monument: Harrison, 4" disk 'Section Corner'

Depth: Flush with adjacent ground

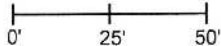
Indiana tie card references:

IN02\_T20NR2W34\_80 IN02\_T20NR2W35\_72

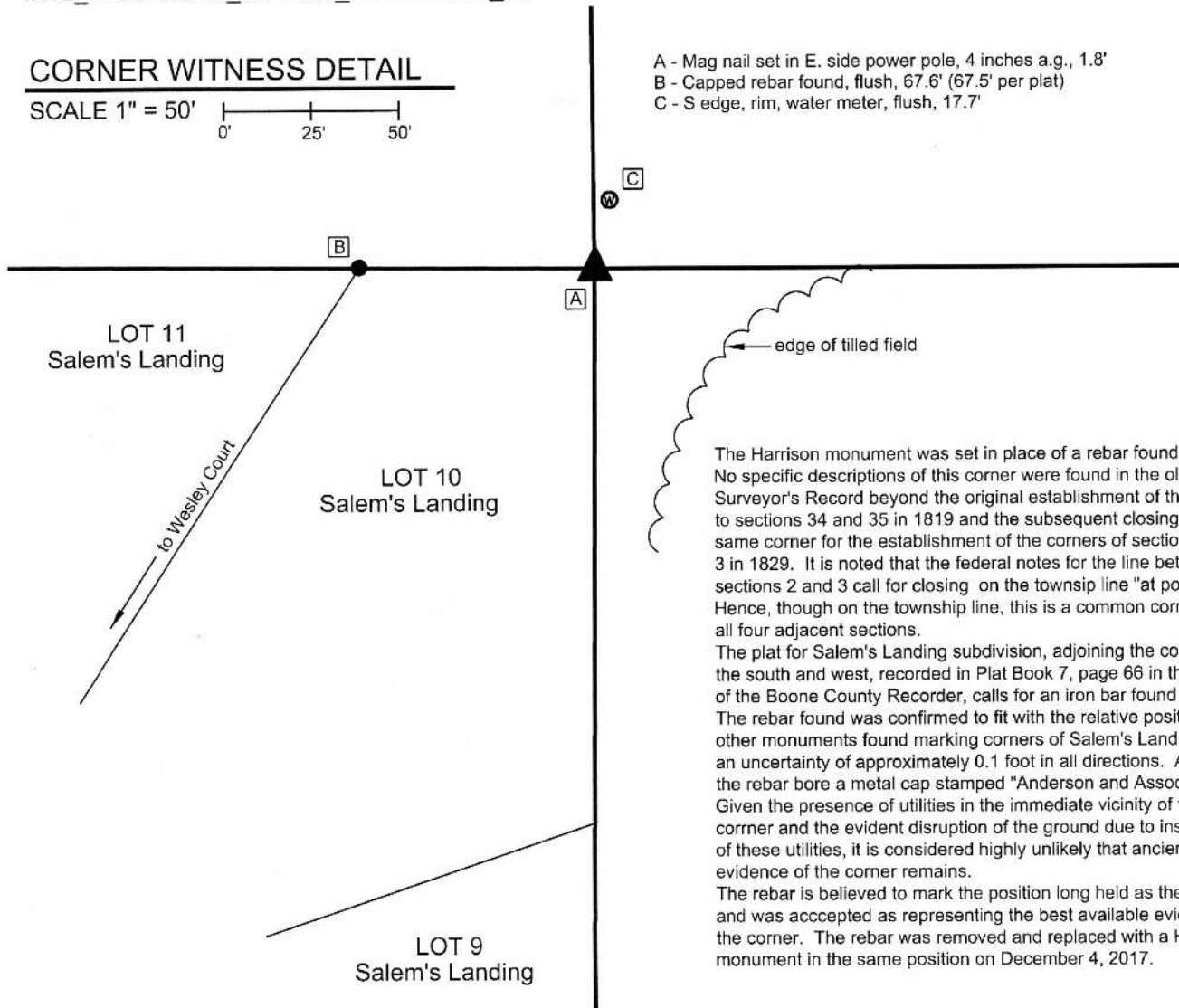
IN02\_T19NR2W03\_08 IN02\_T19NR2W02\_00

### CORNER WITNESS DETAIL

SCALE 1" = 50'



- A - Mag nail set in E. side power pole, 4 inches a.g., 1.8'
- B - Capped rebar found, flush, 67.6' (67.5' per plat)
- C - S edge, rim, water meter, flush, 17.7'



The Harrison monument was set in place of a rebar found. No specific descriptions of this corner were found in the old BCS Surveyor's Record beyond the original establishment of the corner to sections 34 and 35 in 1819 and the subsequent closing on the same corner for the establishment of the corners of sections 2 and 3 in 1829. It is noted that the federal notes for the line between sections 2 and 3 call for closing on the township line "at post." Hence, though on the township line, this is a common corner for all four adjacent sections.

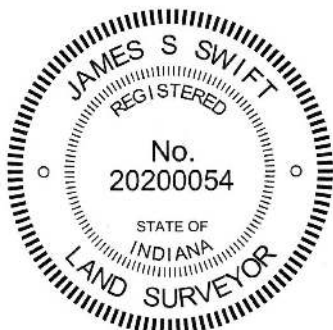
The plat for Salem's Landing subdivision, adjoining the corner to the south and west, recorded in Plat Book 7, page 66 in the Office of the Boone County Recorder, calls for an iron bar found in place. The rebar found was confirmed to fit with the relative positions of other monuments found marking corners of Salem's Landing, with an uncertainty of approximately 0.1 foot in all directions. As found, the rebar bore a metal cap stamped "Anderson and Associates." Given the presence of utilities in the immediate vicinity of the corner and the evident disruption of the ground due to installation of these utilities, it is considered highly unlikely that ancient evidence of the corner remains.

The rebar is believed to mark the position long held as the corner and was accepted as representing the best available evidence of the corner. The rebar was removed and replaced with a Harrison monument in the same position on December 4, 2017.

Sugar Creek Twp

Section 34 T20N, R2W	Section 35 T20N, R2W
Section 3 T19N, R2W	Section 2 T19N, R2W

An arrow points upwards from the center of the bottom row to the center of the top row.



*Kenneth E. Hedge*  
Kenneth E. Hedge, County Surveyor

*James S. Swift*  
James S. Swift, IN LS 20200054  
January 17, 2018

# SECTION CORNER RECORD

NW 600-900

## BOONE COUNTY SURVEYOR'S OFFICE

Data for Corner 2 only:

State Plane grid coordinates NAD83 (2011):

North: 1777403.22 East: 3077228.52 (U.S. survey feet)

Type of monument: Harrison, 4" disk 'Section Corner'

Depth: One inch above adjacent ground

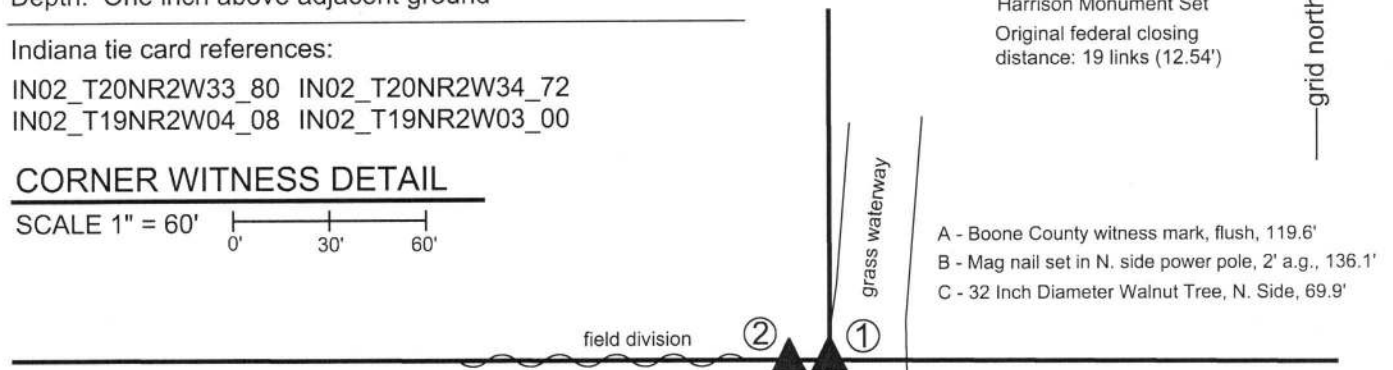
Indiana tie card references:

IN02\_T20NR2W33\_80 IN02\_T20NR2W34\_72  
 IN02\_T19NR2W04\_08 IN02\_T19NR2W03\_00

### CORNER WITNESS DETAIL

SCALE 1" = 60'

- ① S.E. Corner, Section 33  
 S.W. Corner, Section 34  
 T 20 N, R 2 W  
 Final position not determined
- ② N.W. Corner, Section 3  
 N.E. Corner, Section 4  
 Harrison Monument Set  
 Original federal closing  
 distance: 19 links (12.54')



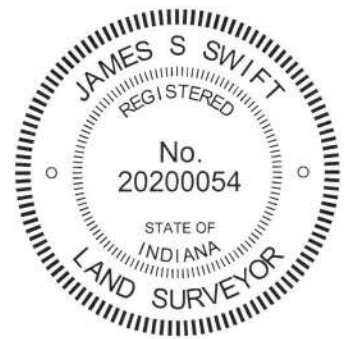
- A - Boone County witness mark, flush, 119.6'
- B - Mag nail set in N. side power pole, 2' a.g., 136.1'
- C - 32 Inch Diameter Walnut Tree, N. Side, 69.9'

The Harrison monument at Corner 2 was set in place of a stone found. No monument was set at Corner 1.

The original federal notes call for Corner 2 to close on the township line 19 links west of Corner 1. A BCS record dated April 6, 1861 states, with respect to Corner 1, "Reestablished. Set Rock 6,16,20. East side marked " S 34" West side marked "S 33." No specific descriptions of Corner 2 were found in the BCS Surveyor's Record. No recent tie cards were found referencing this set of corners. A survey by Banning Engineering, certified by Brian L. Haggard, LS29800001, recorded in Survey Book 4, pages 34-35 in the Office of the Boone County Recorder shows Corner 2 as a stone found. The Surveyor's Report states that the stone was found 1 foot south of a wood corner post, and was conical shaped, 8"x9"x10" with an apparent notch in the top. Excavation was performed at these corners on December 18, 2018. The stone described in the Haggard survey was found as described. The top of the stone was approximately flush with the surface of the ground and an etched "+" mark was vaguely visible on the top of the stone. The base of a broken-off wood post was found slightly to the north. The stone was removed and found to measure 10 inches tall by 9 inches E-W by 8 inches N-S. The stone and base of post fall in line with a field division to the west, a tree line with fence remnants to the south and also the center of County Road 900 South, as shown on the attached sketch. Substantial probing and minor manual excavation in the vicinity of Corner 1, as defined at 19 links east of Corner 2, did not yield evidence of that corner. It is noted that a grass waterway/swale has been installed in this vicinity and Corner 1 appears to fall within the area of cut along the west edge of the waterway.

The stone found at Corner 2 was held as marking the corner and was replaced with a Harrison monument set in the position of the "+" mark found on the top of the stone. Corner 1 should fall 19 links east of Corner 2. The exact position of Corner 1, as it falls on the township line, will be determined after the final position for the standard corner 1/2 mile to east is established.

Corner 1 was originally established as a wood post in 1819. Corner 2 was originally established in 1829



*Kenneth E. Hedge*  
 Kenneth E. Hedge, County Surveyor

*James S. Swift*  
 James S. Swift, IN LS 20200054  
 January 9, 2019

Sugar Creek Township

Section 33 T20N, R2W	Section 34 T20N, R2W
Section 4 T19N, R2W	Section 3 T19N, R2W