

SECTION CORNER RECORD

NW-500-200

BOONE COUNTY SURVEYOR'S OFFICE

State Plane grid coordinates NAD83 (2011):

North: 1771950.07 East: 3114264.48 (U.S. survey feet)

Type of monument: 5/8 inch diameter rebar with cap 'Boone County Surveyor'

Depth: six inches above adjacent ground, at east edge, concrete post

Indiana tie card references:

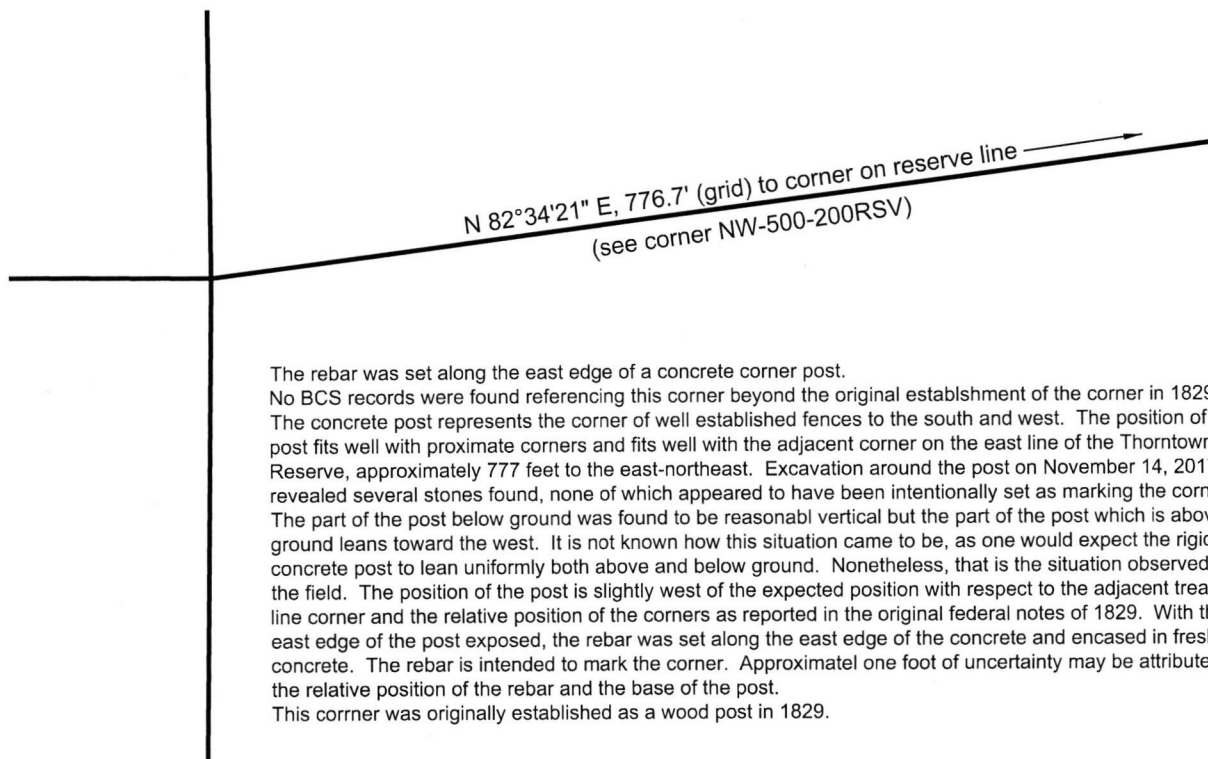
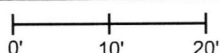
IN02_T19NR1W03_80 IN02_T19NR1W02_72

IN02_T19NR1W10_08 IN02_T19NR1W11_00

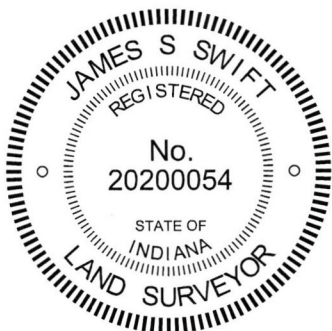


CORNER WITNESS DETAIL

SCALE 1" = 20'



The rebar was set along the east edge of a concrete corner post. No BCS records were found referencing this corner beyond the original establishment of the corner in 1829. The concrete post represents the corner of well established fences to the south and west. The position of the post fits well with proximate corners and fits well with the adjacent corner on the east line of the Thorntown Reserve, approximately 777 feet to the east-northeast. Excavation around the post on November 14, 2017 revealed several stones found, none of which appeared to have been intentionally set as marking the corner. The part of the post below ground was found to be reasonable vertical but the part of the post which is above ground leans toward the west. It is not known how this situation came to be, as one would expect the rigid concrete post to lean uniformly both above and below ground. Nonetheless, that is the situation observed in the field. The position of the post is slightly west of the expected position with respect to the adjacent treaty line corner and the relative position of the corners as reported in the original federal notes of 1829. With the east edge of the post exposed, the rebar was set along the east edge of the concrete and encased in fresh concrete. The rebar is intended to mark the corner. Approximatel one foot of uncertainty may be attributed to the relative position of the rebar and the base of the post. This corner was originally established as a wood post in 1829.



Kenneth E. Hedge
 Kenneth E. Hedge, County Surveyor

James S. Swift
 James S. Swift, IN LS 20200054
 January 10, 2018

Washington Township

Section 3 T19N, R1W	Section 2 T19N, R1W
Section 10 T19N, R1W	Section 11 T19N, R1W

SECTION CORNER RECORD

NW 550-200

BOONE COUNTY SURVEYOR'S OFFICE

State Plane grid coordinates NAD83 (2011):

North: 1774595.15 East: 3114230.82 (U.S. survey feet)

Type of monument: Harrison, 4" disk 'Section Corner'

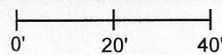
Depth: six inches below adjacent gravel road surface

Indiana tie card references:

IN02_T19NR1W03_44 IN02_T19NR1W02_36

CORNER WITNESS DETAIL

SCALE 1" = 40'



- A - Mag nail set in E. side wood post, 2' a.g., 15.2'
- B - Boone County witness mark, flush, 28.2'
- C - Boone County witness mark, flush, 15.1'
- D - Mag nail set in N. side power pole, 2' a.g., 89.5'

Boone County witness mark is a 3/8" diameter x 2' long rebar bearing a metal cap stamped "Boone County Witness Point."

The Harrison monument was set in the position of a stone found.

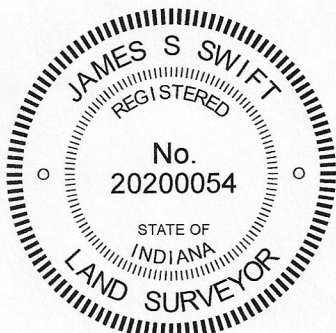
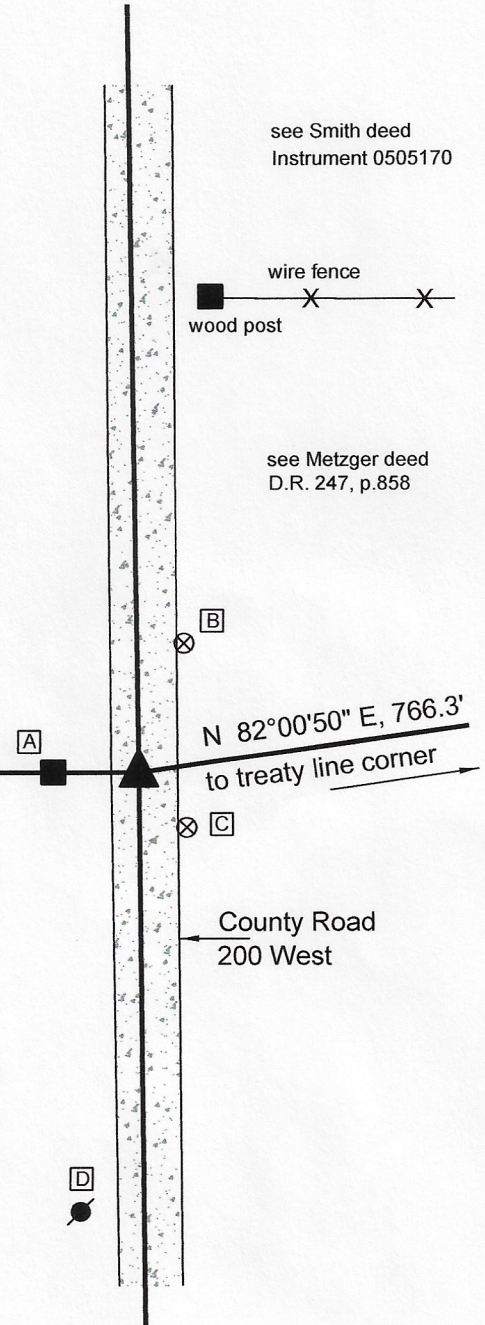
No specific descriptions of this corner were found in the BCS Surveyor's Record, though the corner is mentioned as the terminal point for measurements in records of 1833, 1850 and 1902, implying that at that time, some marker was present from which measure. A BCS tie card dated November 7, 2006 shows the corner as a 5/8 inch diameter rebar with no documentation of source.

This corner was excavated on June 26, 2014. Prior to excavation, a 5/8 inch rebar was found near the surface of the road. The rebar fit with the 2006 distance ties. Excavation revealed a stone found near the surface of the road approximately 1 foot south and 1 foot west of the rebar. As found the stone was 16 inches N-S by 12 inches E-W by 6 inches tall and had a distinct N-S ridge, approximately 1 foot long. Careful inspection of the stone yielded the observation that it appeared to have been previously knocked over towards the south. The stone was removed and another piece of the stone was found below, near the north edge of the stone. The two pieces of rock clearly fit together and the presence of the lower piece confirmed that observation that the main body of the stone had been displaced. With both pieces of the stone put together, it was apparent that the original stone had been 18 inches tall, 12 inches E-W and 6 inches N-S. The position of the lower, apparently undisturbed, portion of the stone was held as marking the corner. A Harrison monument was set in this position. Notably, the stone was slightly south of and 15.5 feet east of the old wood post on the west side of the road. At the S.W. base of that post was a stone which bore the characteristics of a witness rock. The position of the corner, established as documented above, is at the same N-S position as this rock and 1 rod (16.5 feet) east of the rock.

This corner was originally established as a wood post in 1829.

This drawing was revised June 30, 2020 to accurately reflect the angled north line of the southwest quarter of section 2 and to provide deed references which demonstrate that the existing east-west fence, not the angled part of the quarter section line, is the line between Smith and Metzger.

See also BCS corner NW 550-200RSV.

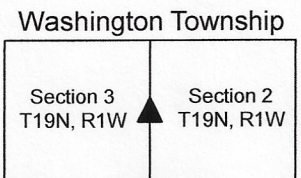


Kenneth E. Hedge

 Kenneth E. Hedge, County Surveyor

James S. Swift

 James S. Swift, IN LS 20200054
 March 27, 2015 (revised June 30, 2020)



SECTION CORNER RECORD

NW 550-300

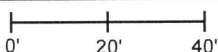
BOONE COUNTY SURVEYOR'S OFFICE

State Plane grid coordinates NAD83 (2011):
North: 1774644.45 East: 3108956.7152 (U.S. survey feet)

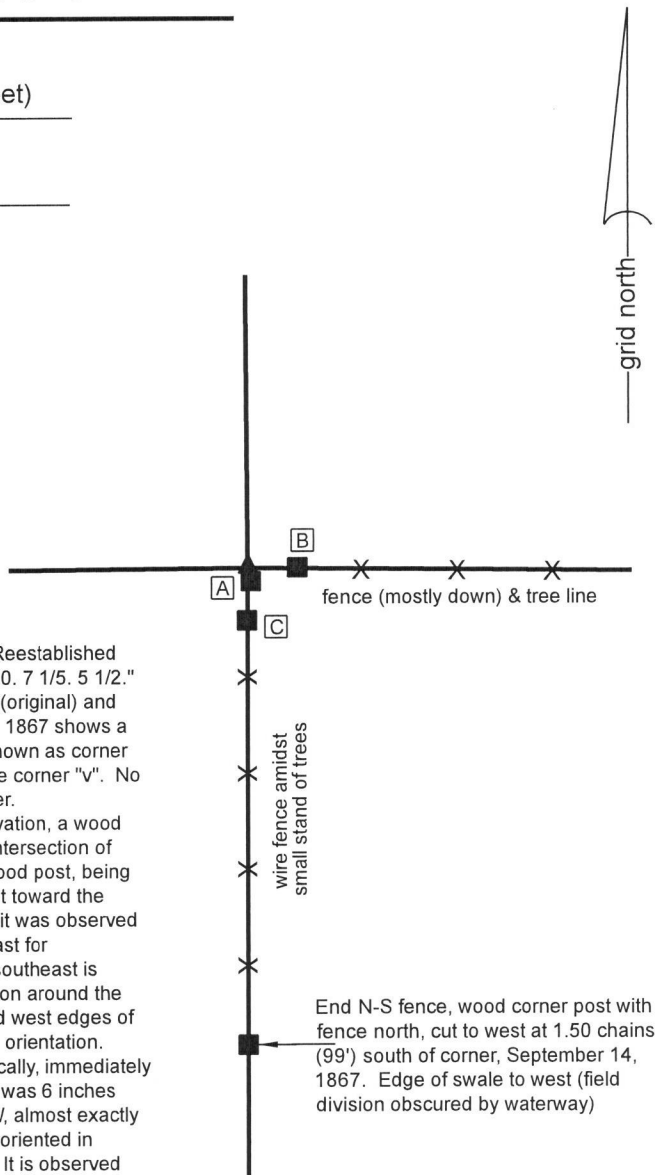
Type of monument: Harrison, 4" disk 'Section Corner'
Depth: Four inches above adjacent ground

Indiana tie card references:
IN02_T19NR1W04_44 IN02_T19NR1W03_36

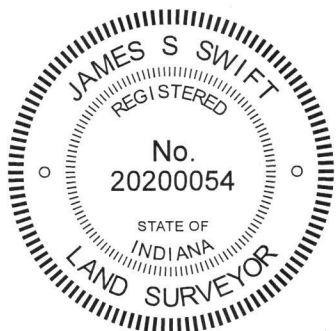
CORNER WITNESS DETAIL

SCALE 1" = 40' 


- A - N. edge, wood corner post, leaning south, @5" a.g., 0.95'
- B - Center of 8x8 inch wood brace post, 9.7'
- C - Center of 4x4 inch wood brace post, 10.8'



The Harrison monument was set in place of a stone found. A BCS record dated October 22, 1862 states, with respect to this corner, "Reestablished from one of original bearing trees (sugar). Found by chopping. Set Rock 10. 7 1/5. 5 1/2." A BCS record dated December 20, 1880 states "Reestablished from sugar (original) and walnut (both green). Set rock 16.14.10+." A BCS record of September 14, 1867 shows a distance between this corner and another point 1.50 chains to the south (shown as corner "v" in the record) and demonstrates that a property line bears west from the corner "v". No recent BCS tie cards or recorded surveys were found referencing this corner. Excavation was performed at this corner on March 18, 2019. Prior to excavation, a wood corner post, leaning substantially toward the south east, was found at the intersection of fences to the south (standing) and east (mostly on the ground). Another wood post, being the southerly terminus of the short north-south fence and having fencing cut toward the west, was found at 98 feet south of the northerly post. Prior to excavation, it was observed that a pile of rocks was situated immediately north of the post, extending east for approximately 20 feet. It is also noted that the elevation of the land to the southeast is substantially higher than the elevation of the land north and west. Excavation around the post revealed numerous rocks of small to medium size at the northwest and west edges of the post, up to three feet deep, most of which were situated in a haphazard orientation. However, the stone described in the 1862 record was found, standing vertically, immediately north of the post and in-line with the fence to the east. As found, the stone was 6 inches deep and measured 11 inches tall by 7 1/2 inches N-S by 5 1/2 inches E-W, almost exactly matching the 1862 record. The orientation of this stone, being vertical and oriented in cardinal directions, was unique with respect to all of the other found rocks. It is observed that the stone was situated at exactly 99 feet (1.50 chains) north of the aforementioned post to the south, in conformity with the 1867 record. The stone was accepted as marking the corner and was replaced with a Harrison monument set in the position of the top, high point of the stone, as found. To protect the monument, several of the other rocks found in the vicinity were piled around the Harrison. The stone described in the 1880 record was not found. It is not clear why a different stone was established in 1880, when the stone described in the 1862 record appears to have remained in place, undisturbed. If two different positions were held for the corner, this could not be proved, as the stone called in the 1880 record was not found. This corner was originally established as wood post in 1829.




Kenneth E. Hedge, County Surveyor


James S. Swift, IN LS 20200054
April 3, 2019

Washington Township

Section 4 T19N, R1W	Section 3 T19N, R1W
------------------------	------------------------

SECTION CORNER RECORD

NW 600-200

BOONE COUNTY SURVEYOR'S OFFICE

State Plane grid coordinates NAD83 (2011):

Corner 1: North: 1777276.10 East: 3114207.33 (U.S. survey feet)

Corner 2: North: 1777276.21 East: 3114184.82 (U.S. survey feet)

Type of monument: INDOT Type B, plug in monument box

Depth: Flush with adjacent road surface

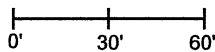
Indiana tie card references:

IN02_T20NR1W34_80 IN02_T19NR1W35_72

IN02_T19NR1W04_08 IN02_T19NR1W03_00

CORNER WITNESS DETAIL

SCALE 1" = 60'

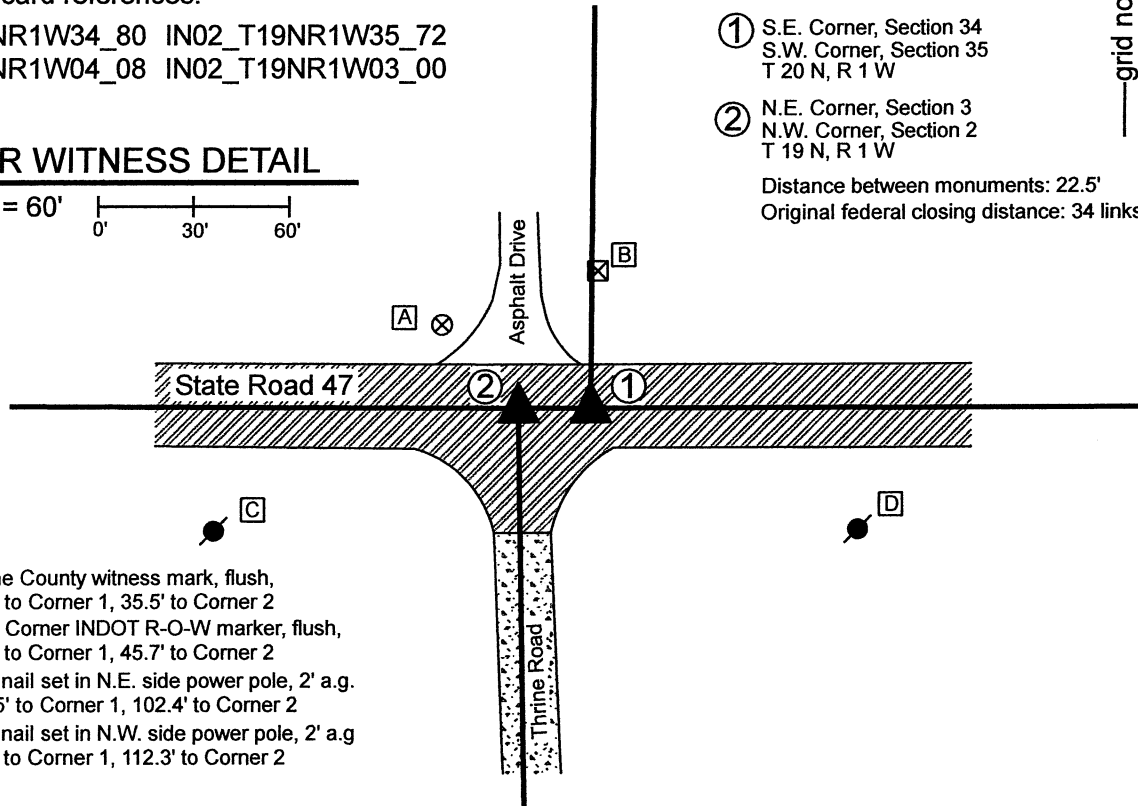


① S.E. Corner, Section 34
S.W. Corner, Section 35
T 20 N, R 1 W

② N.E. Corner, Section 3
N.W. Corner, Section 2
T 19 N, R 1 W

Distance between monuments: 22.5'

Original federal closing distance: 34 links (22.4')



- A - Boone County witness mark, flush, 53.4' to Corner 1, 35.5' to Corner 2
- B - S.W. Corner INDOT R-O-W marker, flush, 40.1' to Corner 1, 45.7' to Corner 2
- C - Mag nail set in N.E. side power pole, 2' a.g. 123.5' to Corner 1, 102.4' to Corner 2
- D - Mag nail set in N.W. side power pole, 2' a.g. 91.4' to Corner 1, 112.3' to Corner 2

The INDOT Type B monuments were found in place and held as marking the respective corners.

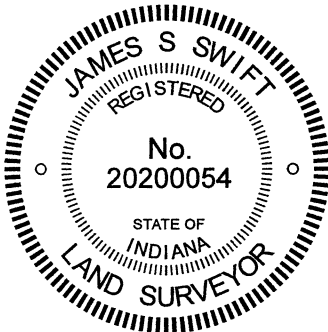
A BCS record of February 21, 1920 states, with respect to Corner 1, "Set rock, 14x8x8." No specific descriptions of Corner 2 were found in the BCS Surveyor's Record beyond the establishment of the corner as a wood post in 1829.

A BCS tie card dated June 22, 2005 shows both corners as P.K. Nails. No BCS tie card was found showing the found Type B monuments, though the respective positions of the two monuments agree substantially with the positions shown on the 2005 tie card. It is believed that the current monuments were set in the same, or nearly the same, positions as held on this 2005 tie card. A Surveyor's Report prepared for INDOT by TBird Design Services, recorded as Instrument 200700000086 in the Office of the Boone County Recorder shows both corners as INDOT Type B monuments and states that the monuments were set in place of Mag Nails after the resurfacing of S.R. 47 per INDOT plus RS-28322 (SR 47). The positions of the found monuments agree with those shown on this report. Please refer to page 30 of 33 of said Instrument 200700000086.

The position of Corner 2 agrees with local evidence in the form of being at the intersection of the east-west state road and the county road to the south. The position of Corner 1 is not supported by local evidence, but agrees with the relative position of Corner 2 with respect to the original federal closing distance of 34 links.

Corner 1 was originally established as a wood post in 1819. Corner 2 was originally established as a wood post in 1829.

Washington Township



Kenneth E. Hedge
Kenneth E. Hedge, County Surveyor

James S. Swift
James S. Swift, IN LS 20200054

January 12, 2021

Section 34 T20N, R1W	Section 35 T20N, R1W
Section 3 T19N, R1W	Section 2 T19N, R1W

SECTION CORNER RECORD

NW 600-250

BOONE COUNTY SURVEYOR'S OFFICE

① South Quarter Corner
Section 34, T 20 N, R 1 W

② North Quarter Corner
Section 3, T 19 N, R 1 W

Distance between
monuments: 3.55'



State Plane grid coordinates NAD83 (2011):
Corner 1: North: 1777287.46 East: 3111575.49
Corner 2: North: 1777287.45 East: 3111579.04

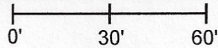
Corner 1: Mag nail set flush with adjacent road surface
Corner 2: Mag nail set flush with adjacent road surface

Indiana tie card references:

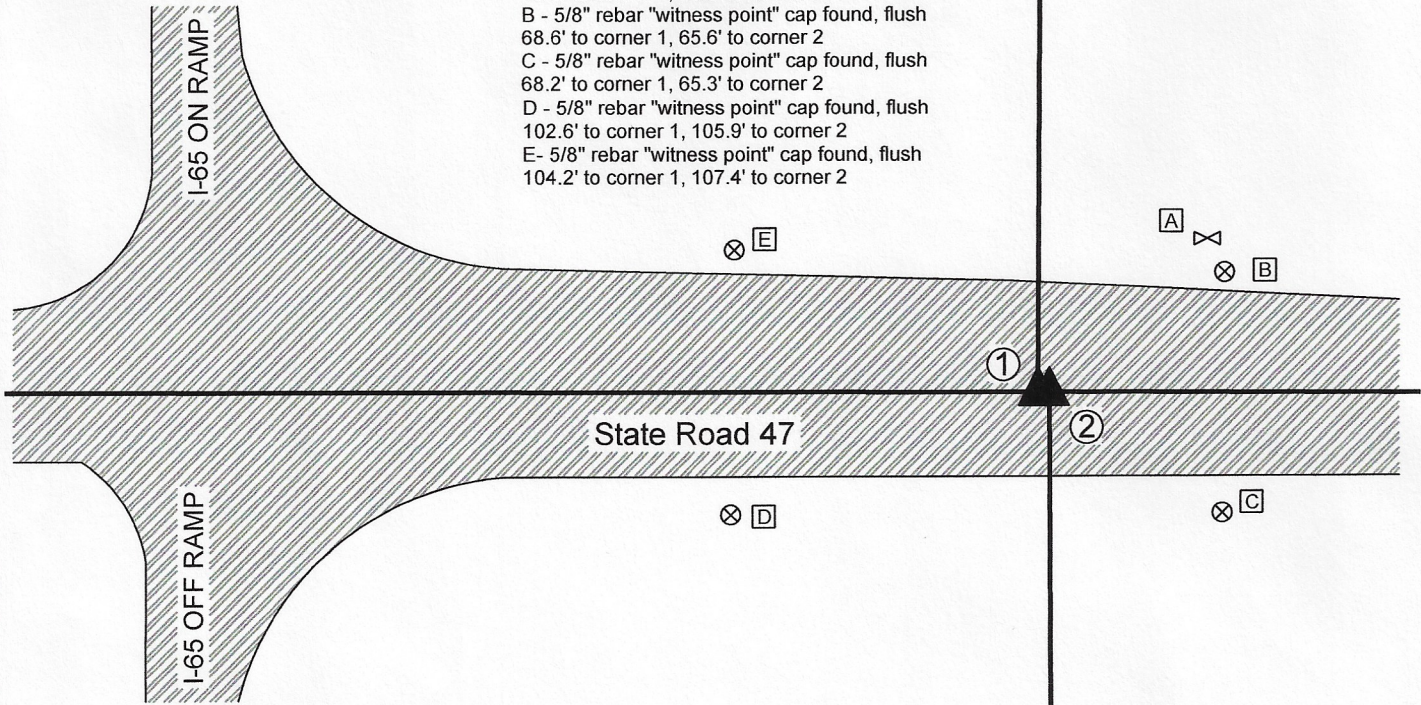
IN02_T20NR1W34_76 IN02_T19NR1W03_04

CORNER WITNESS DETAIL

SCALE 1" = 60'



- A - S.W. corner, S. post "Indianapolis-Chicago" sign, 70.6' to corner 1, 68.0' to corner 2
- B - 5/8" rebar "witness point" cap found, flush 68.6' to corner 1, 65.6' to corner 2
- C - 5/8" rebar "witness point" cap found, flush 68.2' to corner 1, 65.3' to corner 2
- D - 5/8" rebar "witness point" cap found, flush 102.6' to corner 1, 105.9' to corner 2
- E - 5/8" rebar "witness point" cap found, flush 104.2' to corner 1, 107.4' to corner 2



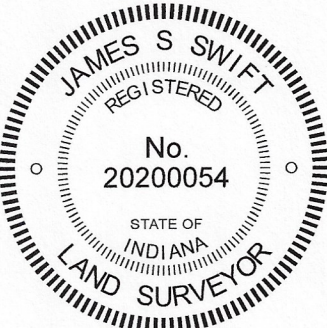
The Mag nails at both corners were set with respect to information shown on a BCS tie card dated June 22, 2005. This document shows both corners as "X" marks in concrete on the approach to the overpass of Interstate 65. The corners are tied to four witness rebars. All four rebars were found and the positions of the corners were established per the distance ties shown on the tie card with uncertainties of less than 0.1 foot.

Corner 1 is an original federal corner set in 1819. This corner is shown on a BCS record dated August 30, 1921 which states "Set Rock 12x8x6 marked +. Witness Rock 24x16x6 North 34 3/4° East, 33 1/2 [links]." Corner 2 is not an original federal corner but is referenced in a BCS record of January 31, 1850.

Corner 1 is shown as "approximate 1/4 corner" on the plans for the overpass of SR47 over I-65, F.Y. 1969, project no. I-65-5(35) 140 Sheet No. 25.

Corner 1 is shown as "cross cut found" on a survey recorded as Instrument 9711589, Boone County Recorder. No excavation was performed as these corners fall in a state road and are clearly in an area of significant fill. The X in concrete marks were not found as the overpass has been resurfaced since 2005. The township line offset of 3.55 feet represents the average of the offsets recorded in the original federal field notes for the northeast and northwest corners of Section 3.

Mag nails with washers stamped 'Boone County Surveyor' were set at both positions. This document will be presented to INDOT to request the establishment of a more durable monument during the next resurfacing project on S.R. 47.



Kenneth E. Hedge
Kenneth E. Hedge, County Surveyor

James S. Swift

James S. Swift, IN LS 20200054
September 9, 2020

Washington Township

Section 34
T20N, R1W

▲

Section 3
T19N, R1W

SECTION CORNER RECORD

NW 600-300

BOONE COUNTY SURVEYOR'S OFFICE

State Plane grid coordinates NAD83 (2011):

Corner 1: North: 1777290.16 East: 3108929.71 (U.S. survey feet)

Corner 2: North: 1777290.13 East: 3108959.41 (U.S. survey feet)

Corner 1: INDOT Type B monument, flush

Corner 2: Mag nail with 'Boone County Surveyor' washer, flush

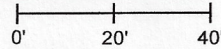
Indiana tie card references:

IN02_T20NR1W33_80 IN02_T20NR1W34_72

IN02_T19NR1W04_08 IN02_T19NR1W03_00

CORNER WITNESS DETAIL

SCALE 1" = 40'



A - Boone County witness mark, flush,

43.6' to corner 1, 22.0' to corner 2

B - Mag nail set in S. side power pole, 2' a.g.,

69.0' to corner 1, 47.7' to corner 2

C - Mag nail set in N. side power pole, 2' a.g.,

124.3 to corner 1, 96.4' to corner 2

D - S.W. corner top of right-of-way marker,

50.7' to corner 1, 40.3' to corner 2

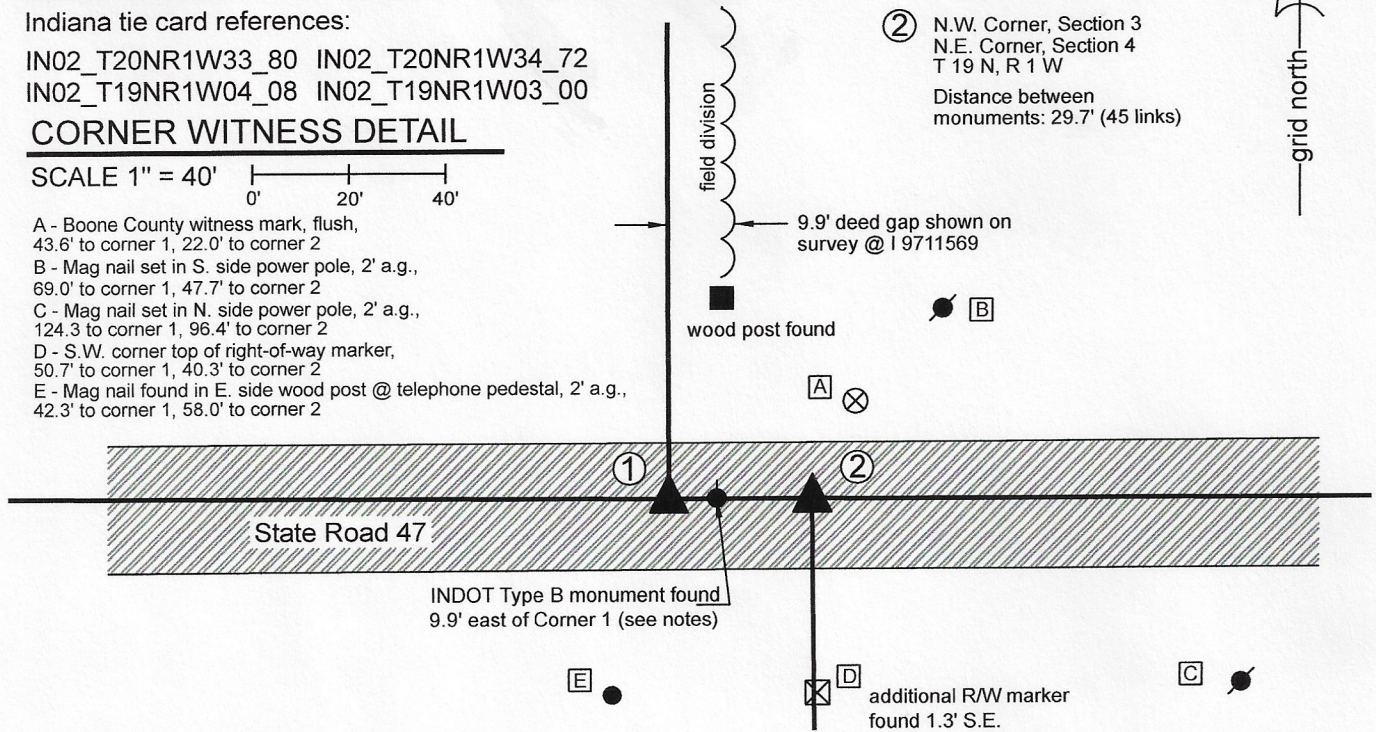
E - Mag nail found in E. side wood post @ telephone pedestal, 2' a.g.,

42.3' to corner 1, 58.0' to corner 2

① S.W. Corner, Section 34
S.E. Corner, Section 33
T 20 N, R 1 W

② N.W. Corner, Section 3
N.E. Corner, Section 4
T 19 N, R 1 W

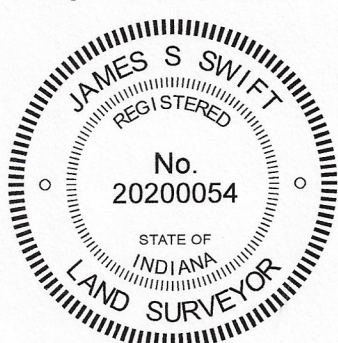
Distance between
monuments: 29.7' (45 links)



The INDOT Type B Monument at Corner 1 was found and held as marking the corner. This position agrees with the position of a P.K. Nail shown as marking the corner on a BCS tie card dated June 22, 2005. Another INDOT Type B Monument was found at 9.9 feet east of the monument marking Corner 1. This monument does not represent the position of Corner 2. A surveyor's report produced for INDOT and recorded as Instrument 20070000086 in the Office of the Boone County Recorder shows, on page 26 of 33, that the easterly of the Type B monuments represents the northeast corner of section 4, T19N, R1W. This is not correct and is not in agreement with the 2005 BCS tie card, INDOT plans for the I-65 / S.R. 47 interchange or original federal field notes.

Both corners are original federal corners. Corner 1 was set in 1819 and Corner 2 was set in 1829, 45 links (29.7 feet) east of Corner 1. A BCS record dated October 21, 1862 states, with respect to Corner 1, "Reestablished from the corner of sects 3 & 4, T19. Trees both gone. Set two rocks. Under one 7x5x3. Top 9x8x7." A BCS record dated October 22, 1862 states, with respect to Corner 2, "Found stone at Corner." Both corners are shown on a BCS tie card dated June 22, 2005 with a separation of 29.70 feet, equal to the original offset of 45 links reported in the 1829 federal notes. A survey recorded as Instrument 9711589 in the Office of the Boone County Recorder shows a P.K. Nail found at Corner 1 and demonstrates a 9.90 foot deed gap east of the section line to the north of Corner 1. It is most likely that the additional INDOT Type B monument, shown as marking Corner 2 on the report recorded as Instrument 20070000086, was set in place of a monument which marked the easterly edge of the 9.90 foot deed gap. This monument does not mark Corner 2. Neither corner is specifically shown on the plans for the S.R. 47, Interstate 65 interchange (F.Y. 1969, project no. I-65-5(35) 140. Sheet No. 25), though the plans show station information for the section lines to the north and south of the road. This information indicates a separation of approximately 22.5 feet. Two INDOT right-of-way markers were found on the south side of S.R. 47, one of which is approximately 1 foot east of the section line defined by Corner 2, the other being 1.3 feet southeasterly of the first. Uncertainties with respect to the position of Corner 2 and the south quarter corner of section 34, as shown on the aforementioned plans, is approximately 4 feet east-west.

The Type B monument at Corner 1 was held as found. Corner 2 was established at 29.70 feet east thereof on the township line as defined by Corner 1 and the south quarter corner of section 34 (see BCS Corner NW 600-250). A Mag nail was set at this position of September 8, 2020. The Type B monument 9.9 feet east of Corner 1 is noted but is not considered as marking either corner. This document will be presented to INDOT to request establishment of a more durable monument at Corner 2 during the next resurfacing project on S.R. 47.



Kenneth E. Hedge
Kenneth E. Hedge, County Surveyor

James S. Swift
James S. Swift, IN LS 20200054
September 9, 2020

Washington Township

Section 33 T20N, R1W	Section 34 T20N, R1W
Section 4 T19N, R1W	Section 3 T19N, R1W