

SECTION CORNER RECORD

NE 500-300

BOONE COUNTY SURVEYOR'S OFFICE

State Plane grid coordinates NAD83 (2011):

North: 1772176.19 East: 3140370.63 (U.S. survey feet)

Type of monument: 5/8" diameter rebar, with aluminum cap stamped 'Boone County Surveyor'

Depth: Fourteen inches below surrounding ground

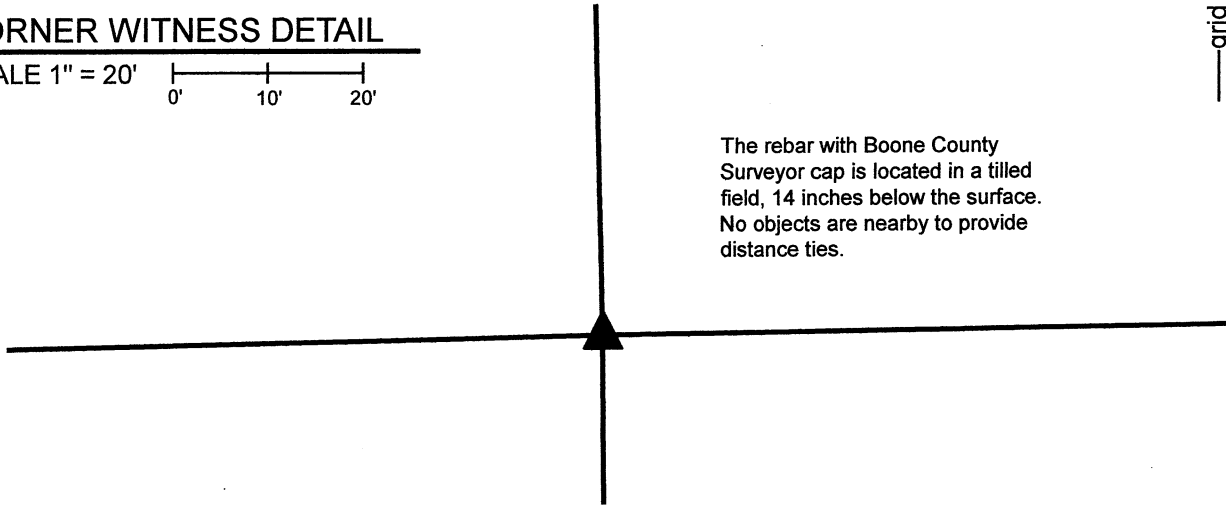
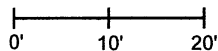
Indiana tie card references:

IN02_T19NR1E03_72 IN02_T19NR1E04_80

IN02_T19NR1E09_08 IN02_T19NR1E10_00

CORNER WITNESS DETAIL

SCALE 1" = 20'



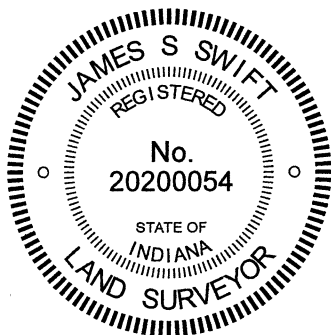
The rebar with Boone County Surveyor cap is located in a tilled field, 14 inches below the surface. No objects are nearby to provide distance ties.

The rebar with Boone County Surveyor cap was set at a computed position.

No specific descriptions of this corner were found in the BCS Surveyor's Record. No recent BCS tie cards were found, nor were surveys recorded in the Office of the Boone County Recorder found referencing the corner.

This corner falls in a tilled agricultural field and no physical evidence of the corner was found in the immediate vicinity. The corner is referenced in the deed for the property which surrounds it as well as in the exception for a property to the west. The description of a 19.0301-acre parcel included in Instruments 20150003498 and 2017004207 explicitly references this corner, as tied to the northwest and southeast corners of the northeast quarter of Section 9. These descriptions are clearly produced by modern survey, with bearings to the nearest second and distances to the nearest hundredth of a foot. The survey which created the descriptions was not found, but the described geometry fits precisely with the relative positions of the monuments at the southeast and northwest corners of the northeast quarter of Section 9 (see BCS Corners NE 500-250 and NE 450-300) as well as a 1/2-inch diameter rebar found in a slightly disturbed condition at a point on the east line of said northeast quarter, described as being 1327.34 feet south of the subject corner. Uncertainties of less than 0.2 foot in all directions were observed with respect to the relative positions of these three monuments and the geometry described in the calls of the 19.0301-acre tract. It is not known what evidence was held to determine the position of the corner at the time this description was created. However, evidence was not found which directly contradicts the position of the corner, as so described. Fencing which may have been along the south edge of a wooded area to the east of the corner appears to have been removed and no reliable, hard evidence of the line between the southwest quarter of Section 3 and northwest quarter of Section 10 was found. The 1/2-inch diameter rebar mentioned above was found along the line between the northeast quarter of Section 9 and northwest quarter of Section 10, as was fencing to the south and a north-segment of Elizaville Road.

The call for the subject corner in the deed descriptions referenced above was held as the best available evidence of the corner. The position of the corner was computed with respect to this call as explained above. A 30-inch length of 5/8-inch diameter rebar was set at this position of December 8, 2021. The rebar was set at 14 inches below grade to avoid being disturbed by agricultural equipment.



Kenneth E. Hedge

 Kenneth E. Hedge, County Surveyor

James S. Swift

 James S. Swift, IN LS 20200054
 December 15, 2021

Clinton Township

Section 4 T19N, R1E	Section 3 T19N, R1E
Section 9 T19N, R1E	Section 10 T19N, R1E

SECTION CORNER RECORD

NE 500-350

BOONE COUNTY SURVEYOR'S OFFICE

State Plane grid coordinates NAD83 (CORS96):
North: 1772208.68 East: 3142939.97 (U.S. survey feet)

Type of monument: Harrison, 4" disk 'Section Corner'
Depth: six inches below adjacent gravel road surface

Indiana tie card references:
IN02_T19NR1E03_76
IN02_T19NR1E10_04

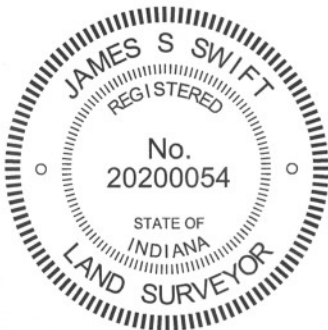
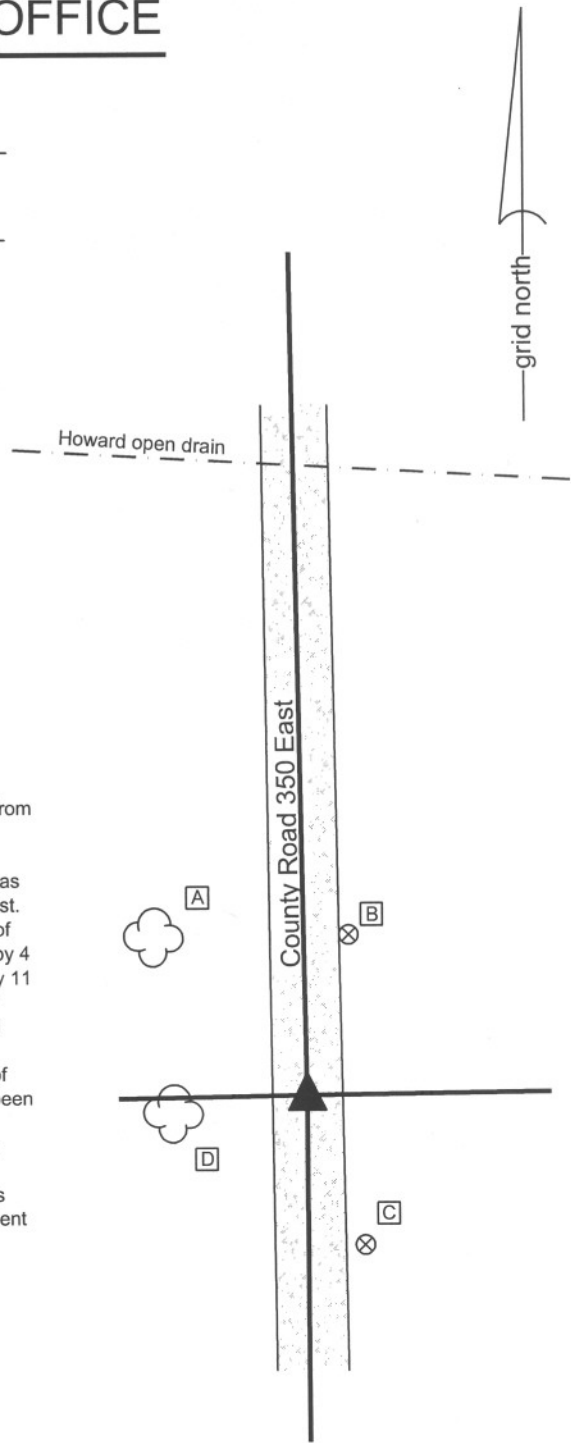
CORNER WITNESS DETAIL

SCALE 1" = 40'
0' 20' 40'

- A - East edge 10 inch diameter pine tree, 41.5'
- B - Boone County witness mark, flush, 34.72'
- C - Boone County witness mark, flush, 33.44'
- D - East edge, 10 inch diameter pine tree, 21.9'

Boone County witness mark is a 3/8" diameter x 2' long rebar bearing a metal cap stamped "Boone County Witness Point."

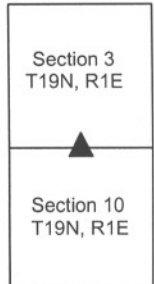
The harrison monument was set in place of a stone found.
 A BCS record of March 10, 1852 states "a stone." A undated BCS tie card, likely from the late 1960s, states "no stone." A BCS tie card dated June 15, 1975 states "no stone found - set rod."
 This corner was excavated on June 15, 2012. Prior to excavation, a railroad rail was found at the surface, generally vertical though leaning slightly towards the northwest. Excavation revealed a stone found at the surface, 3.6 feet north and 2.6 feet east of the rail. The stone had a distinct flat, top area measuring approximately 4 inches by 4 inches. The stone was removed and found to be 22 inches tall, 13 inches E-W by 11 inches N-S, as found. The stone was vertical and well embedded in the clay layer below the road bed, protruding approximately 6 inches out of the clay into the road bed. The total road bed is approximately 6 inches deep. No specific marks were found on the stone. It is noted that, given the position of the stone at the surface of the gravel road, any mark which may have been on the top, flat area would have been scraped off by road grading equipment. The stone was in the center of the north-south road, whereas the rail had been slightly to the west of the center. The stone was in line with the brush line to the east, though the two previous tie cards showed the corner as being in line with a fence to the east. The stone was held as marking the corner. The stone was removed and replaced with a harrison monument in the same position as the center of the flat top of the stone.
 This corner was originally established as a wood corner post in 1822.



Kenneth E. Hedge
 Kenneth E. Hedge, County Surveyor

James S. Swift
 James S. Swift, IN LS 20200054
 January 15, 2013

Clinton Twp



PHOTOGRAPHIC DOCUMENTATION

Date of photography: June 15, 2012

View of the stone from above and west.



View of the stone from above.



View from the south, looking across the stone and north along County Road 350 East.



View of the stone from the west. Note the railroad rail, removed during excavation.



For details and documentation, refer to related sheet "Section Corner Record."

SECTION CORNER RECORD

NE 500-400

BOONE COUNTY SURVEYOR'S OFFICE

State Plane grid coordinates NAD83 (2011):

North: 1772240.31 East: 3145512.40 (U.S. survey feet)

Type of monument: 24" length of 5/8-inch diameter rebar with aluminum cap stamped 'Boone County Surveyor'

Depth: Fourteen inches below surrounding ground

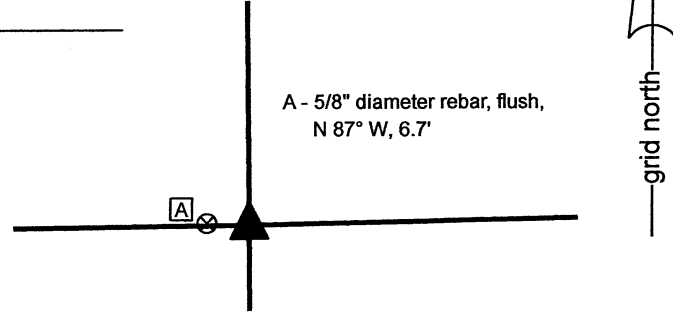
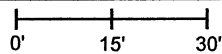
Indiana tie card references:

IN02_T19NR1E02_72 IN02_T19NR1E03_80

IN02_T19NR1E10_08 IN02_T19NR1E11_00

CORNER WITNESS DETAIL

SCALE 1" = 30'



The rebar with metal cap stamped 'Boone County Surveyor' was set at a computed position.

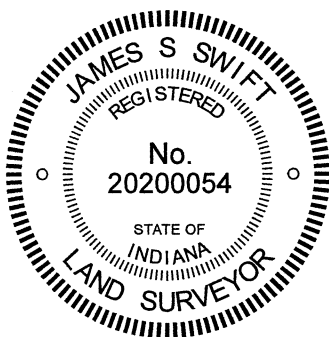
No specific descriptions of this corner were found in the BCS Surveyor's Record beyond the original establishment of the corner as a wood post in 1822.

No recent BCS tie cards were found referencing this corner, nor were any surveys recorded in the Office of the Boone County Recorder found specifically referencing the corner.

This corner has been investigated several times between 2017 and 2021. The corner falls in a tilled field. A 5/8-inch rebar was found in 2021. The rebar is flush with the ground with no cap and does not appear to be old. This rebar had not been found previously and no record of it being set was found in the county records. Evidence of the line between the southwest quarter of Section 2 and southeast quarter of Section 3 was found in the form of an old fence north of Elizaville Road, newer fencing south of the road and an iron pipe evidently marking the southeast corner Grinstead property in Section 3, Instrument 2015006355, Boone County Recorder. A monument called as being at the intersection of Elizaville Road and the east line of the southeast quarter of section 3 on a survey recorded as Instrument 2020012268 was not found. Evidence of the line between the southeast quarter of Section 3 and the northeast quarter of Section 10 was found in the form of steel t-post at an old fence intersection (wood corner post found on the ground nearby) west of Elizaville Road. Evidence of the line between the southwest quarter of Section 2 and the northwest quarter of Section 11 was found in the form of numerous wood posts and standing fence. The subject corner is also referenced in the description of the Jones property in Section 3, Instrument 2019001022. Rebars with metal caps stamped Carl Anderson ENGR were found marking or witnessing several corners of this property.

Based on analysis of the various evidence noted above, a position for the corner was computed at the intersection of the southerly prolongation of a line connecting the Harrison monument at the east quarter corner of Section 3 (see BCS Corner NE 550-400) through the iron pipe at the southeast corner of the Grinstead property and the westerly prolongation of a line connecting the Harrison monument at the south quarter corner of Section 2 (see BCS Corner NE 500-450) through wood posts found 320 feet and 565 feet, respectively, east of the computed position. This position falls 6.6 feet east and 0.5 foot south of the rebar found flush in the tilled field and falls 3.4 feet east of a position computed with respect to the found Anderson rebars and deed calls in Instrument 2019001022. The line between the southeast quarter of Section 3 and southwest quarter of Section 2, established by holding the computed position, fits remarkably well with the fencing found on each side of Elizaville Road. The line between the northeast quarter of Section 10 and the northwest quarter of Section 11 fits remarkably well with a post found on the north side of County Road 475 and the implied deed distance of 5 chains east of that line, per Instrument 200600002317. The post and fence evidence to the east and west also fit well with the computed position. A wood corner post found providing the local evidence of the northeast corner of the northwest quarter of the northwest quarter of Section 11 falls 4.8 feet south and 3.2 feet east of a computed midpoint. This variation represents the least best-fit of the evidence, but also supports the establishment of the corner as east of the found rebar and computed position with respect to the aforementioned Anderson rebars. It is noted that the deed for the property surrounding the corner, Starkey, was not found. The references to that document in the transfer books in the Boone County Auditors Office direct the researcher to the deed for a different property. Hence, the description of this property was not utilized in determining the position of the corner.

As noted above, the position for the corner was computed with respect the preponderance of physical evidence and dependent deed references. The computed position was held. A rebar with metal cap stamped 'Boone County Surveyor' was set at 14 inches deep in the tilled field on November 23, 2021. The existing rebar, flush with the field, was left in place and is noted as a reference tie.



Kenneth E. Hedge
 Kenneth E. Hedge, County Surveyor

James S. Swift
 James S. Swift, IN LS 20200054

December 1, 2021

Clinton Township

Section 3 T19N, R1E	Section 2 T19N, R1E
Section 10 T19N, R1E	Section 11 T19N, R1E

SECTION CORNER RECORD

NE 550-300

BOONE COUNTY SURVEYOR'S OFFICE

State Plane grid coordinates NAD83 (CORS96):

North: 1774813.74 East: 3140306.40 (U.S. survey feet)

Type of monument: Harrison, 4" disk 'Section Corner'

Depth: two inches above adjoining ground

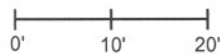
Indiana tie card references:

IN02_T19NR1E04_44

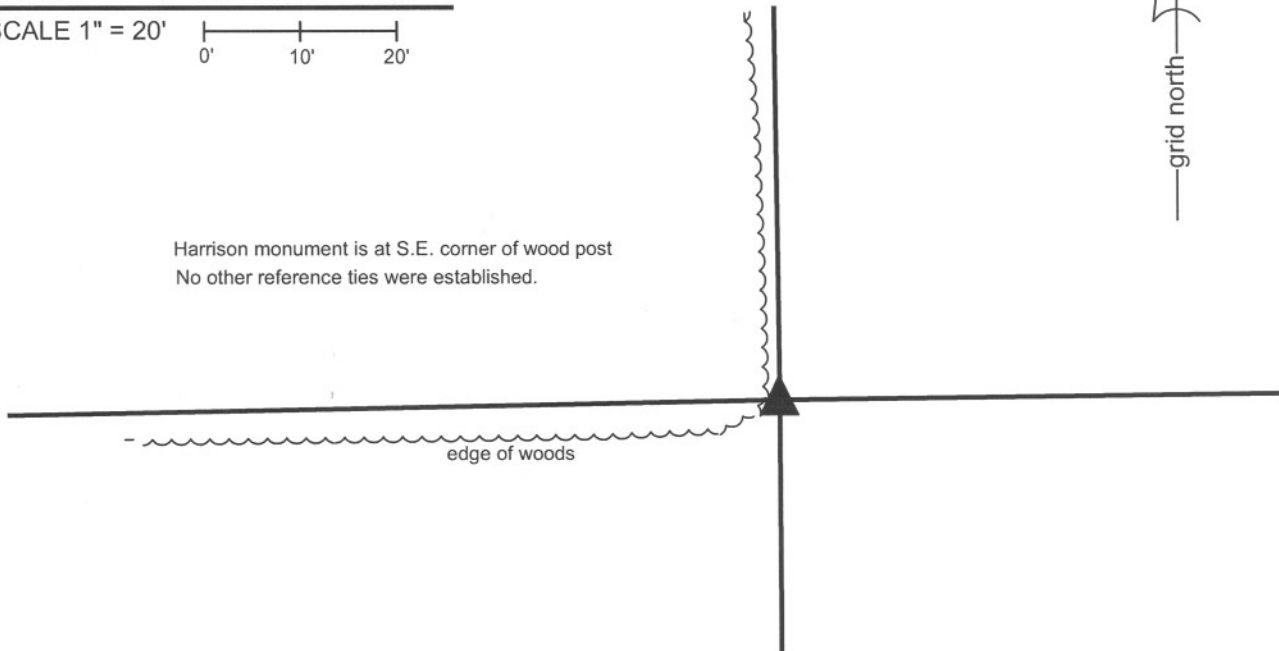
IN02_T19NR1E03_36

CORNER WITNESS DETAIL

SCALE 1" = 20'



Harrison monument is at S.E. corner of wood post
No other reference ties were established.

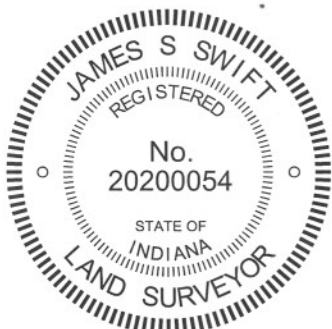


The harrison monument was set in place of a harrison monument found.

No specific descriptions of this corner were found in the BCS Surveyor's Record beyond the original establishment of the corner in 1822. A BCS tie card dated September 1, 1995 shows the corner as a rebar set on the south side of a corner post. A BCS tie card dated August 19, 2005 shows the corner as a harrison monument at the base of a fence corner post.

This corner was excavated on November 1, 2011. A harrison monument was found at the East edge of a wood corner post. The post was broken, as found, but was clearly the corner for fences to the north and west. The harrison monument was loose, broken off at 8 inches deep and leaning to the west. Various rocks were found around and near the post but none were identifiable as a section corner stone. As noted above, no specific descriptions of the corner were found in the old BCS Surveyor's Record. The harrison monument was replaced in the position of the monument as it would have been in a vertical orientation. A new harrison monument was set in a more stable manner.

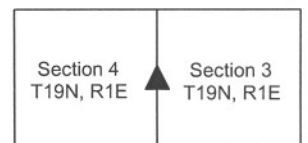
This corner was originally established as a wood post in June, 1822.



Kenneth E. Hedge
Kenneth E. Hedge, County Surveyor

James S. Swift
James S. Swift, IN LS 20200054
March 1, 2012

Clinton Township



SECTION CORNER RECORD

NE 550-400

BOONE COUNTY SURVEYOR'S OFFICE

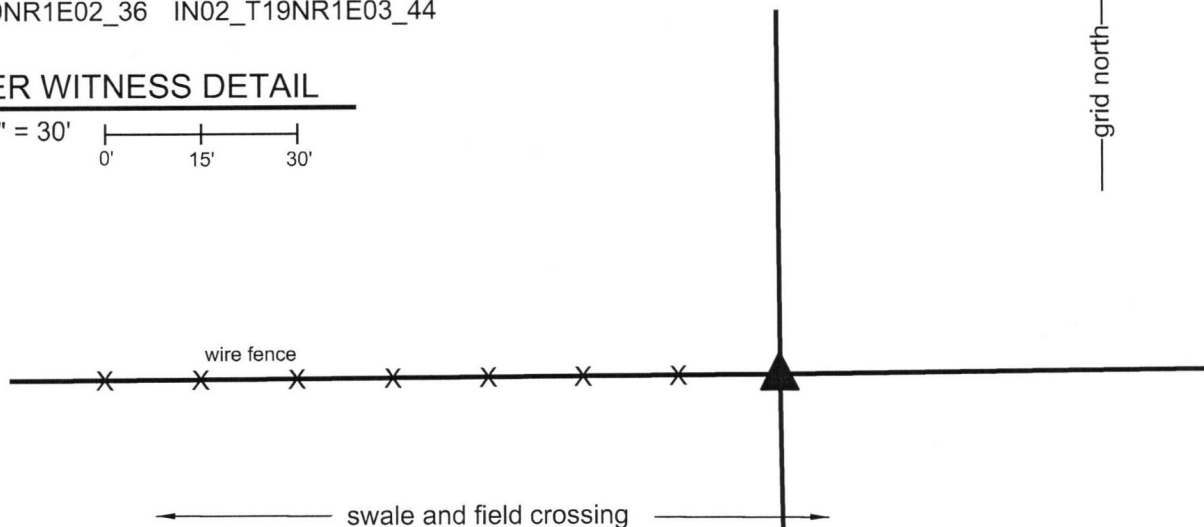
State Plane grid coordinates NAD83 (2011):
North: 1774882.78 East: 3145478.98 (U.S. survey feet)

Type of monument: Harrison, 4" disk 'Section Corner'
Depth: Three inches above ground, adjacent to post

Indiana tie card references:
IN02_T19NR1E02_36 IN02_T19NR1E03_44

CORNER WITNESS DETAIL

SCALE 1" = 30'
0' 15' 30'

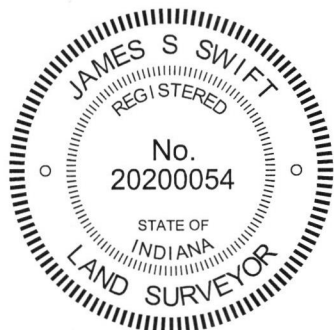


The Harrison monument was set in place of a stone found. No specific descriptions of this corner were found in the BCS Surveyor's Record beyond the original establishment of the corner as a wood post in 1822. No recent BCS tie cards were found referencing the corner, nor were descriptions of it found on surveys recorded in the Boone County Recorder's Office.

Excavation at this corner was performed on October 18, 2017. Prior to excavation, an ancient wood corner post was found with standing fence to the west and fencing cut-off to the north and south. The standing fence to the south begins approximately 60 feet south of the post, having evidently been removed near the post for purposes of installation of a swale and field crossing.

A stone was found at the south edge of the post, 6 inches below grade. No other stones were found around the post within 12 inches of the surface of the adjoining ground. The found stone was removed and measured to be 8 inches N-S by 7 inches E-W by 6 inches tall. No specific marks were observed on the stone. It is not possible to positively confirm if this stone was intentionally set as a corner marker, but it did appear in the field to be unique and purposefully set and did not appear to be acting as a brace rock. Further excavation revealed several rocks generally below the upper stone, the tops of which were 12 to 14 inches below grade. One of these rocks did appear to be acting as a brace for the post. The position of the post and stone fit well with the relative positions of proximate corners and the ancient evidence of occupation in the form of the fences and post were accepted as the best available evidence of the original location of the corner. The top stone was held as marking the corner and was replaced with a Harrison monument in the same position, adjacent to the southwest edge of the post. The lower rocks were left in place, partially embedded in concrete as part of the base of the monument.

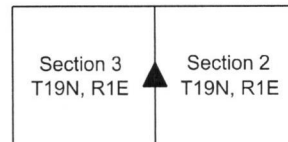
The Harrison monument is situated at the southwest edge of a standing post witnessed with an orange fiberglass lathe 'Survey Marker'. No other distance ties are provided. The standing portions of fence to the south and west are no longer stable and the associated line posts are loose and unstable, rendering them inappropriate for use as reference objects.



Kenneth E. Hedge
Kenneth E. Hedge, County Surveyor

James S. Swift
James S. Swift, IN LS 20200054
October 24, 2017

Clinton Township



SECTION CORNER RECORD

NE 600-300

BOONE COUNTY SURVEYOR'S OFFICE

State Plane grid coordinates NAD83 (2011):

Corner 1: North: 1777482.45 East: 3140144.30 (U.S. survey feet)

Corner 2: North: 1777484.65 East: 3140271.66 (U.S. survey feet)

Type of monument: INDOT Type B, plug in monument box

Depth: Flush with adjacent road surface

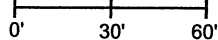
Indiana tie card references:

IN02_T20NR1E33_80 IN02_T20NR1E34_72

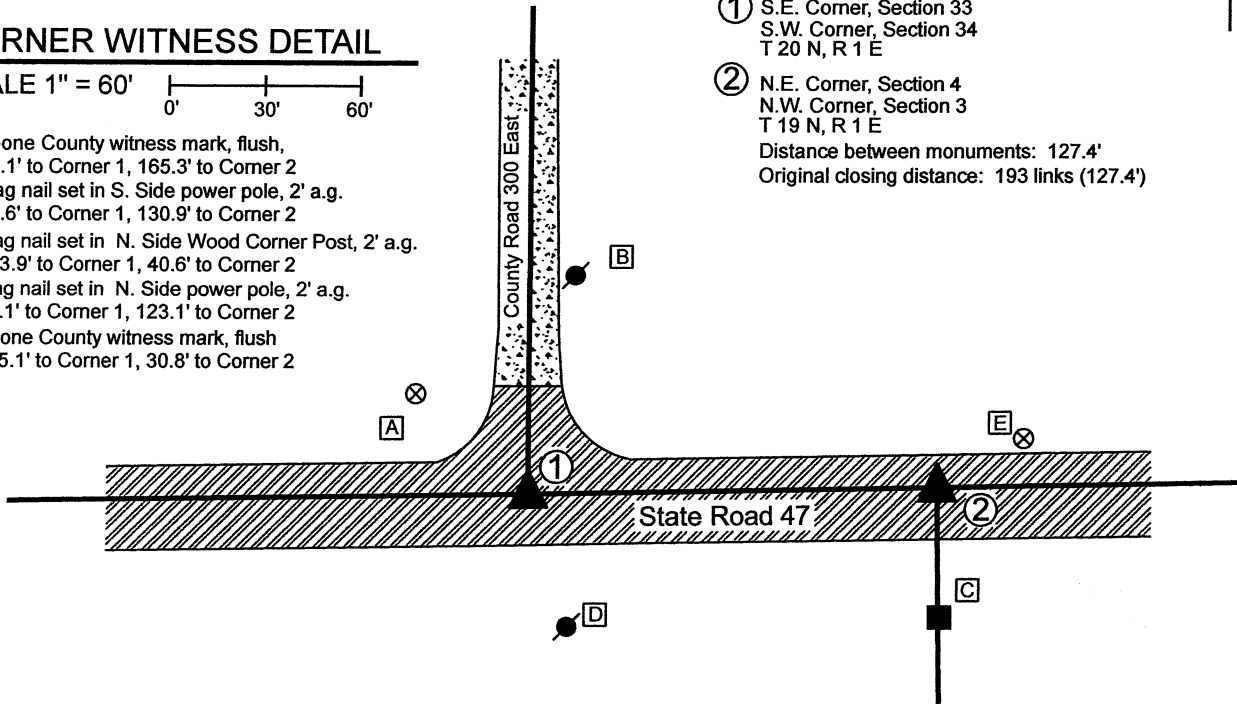
IN02_T19NR1E04_08 IN02_T19NR1E03_00

CORNER WITNESS DETAIL

SCALE 1" = 60'



- A - Boone County witness mark, flush, 47.1' to Corner 1, 165.3' to Corner 2
- B - Mag nail set in S. Side power pole, 2' a.g. 69.6' to Corner 1, 130.9' to Corner 2
- C - Mag nail set in N. Side Wood Corner Post, 2' a.g. 133.9' to Corner 1, 40.6' to Corner 2
- D - Mag nail set in N. Side power pole, 2' a.g. 43.1' to Corner 1, 123.1' to Corner 2
- E - Boone County witness mark, flush 155.1' to Corner 1, 30.8' to Corner 2



① S.E. Corner, Section 33
S.W. Corner, Section 34
T 20 N, R 1 E

② N.E. Corner, Section 4
N.W. Corner, Section 3
T 19 N, R 1 E

Distance between monuments: 127.4'
Original closing distance: 193 links (127.4')



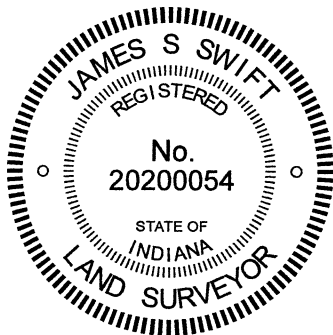
The INDOT Type B monuments were found in place and held as marking the respective corners.

A BCS record of April 7, 1855 states, with respect to Corner 2, "Stone in Road." A BCS record of March 14, 1873 states, with respect to Corner 1, "Found from corner of Sects 4 & 3 where we set the rock deeper and placed one under it, 12.8.6." No distance is provided in these records to indicate the separation of the two monuments, though it is noted that the original federal closing distance recorded in 1822 is 193 links or 127.4 feet.

A BCS tie card dated 2004 shows both corners as P.K. Nail with washers. A subsequent BCS tie card dated June 22, 2005 shows both corners as INDOT Type "C" Monuments, in positions which agree precisely with the P.K. Nails shown on the previous tie card.

The INDOT monuments, being Type B monuments (brass plug in monument box), were found in good condition in positions which agree with the 2005 BCS tie card. These corners were not excavated as the fall in a state highway. The Type B monuments were held as marking the respective corners. Corner 1 agrees with local evidence in the form of being at the intersection of the east-west state road and the county road to the north. Corner 2 agrees with local evidence in the form of being in the center of the east-west state road, immediately north of an old wood corner post on the south side of the road. It is noted that the two corners are separated by the original federal closing distance of 193 links or 127.4 feet.

Corner 1 was originally established as a wood post in 1819. Corner 2 was original established as a wood post in 1822.



Kenneth E. Hedge
Kenneth E. Hedge, County Surveyor

James S. Swift
James S. Swift, IN LS 20200054

January 12, 2020

Clinton Township

Section 33 T20N, R1E	Section 34 T20N, R1E
Section 4 T19N, R1E	Section 3 T19N, R1E

SECTION CORNER RECORD

NE 600-350

BOONE COUNTY SURVEYOR'S OFFICE

State Plane grid coordinates NAD83 (2011):

Corner 1: North: 1777528.12 East: 3142786.08 (U.S. survey feet)

Corner 2: North: 1777529.77 East: 3142871.13 (U.S. survey feet)

① South Quarter Corner
Section 34, T 20 N, R 1 E

② North Quarter Corner
Section 3, T 19 N, R 1 E

Distance between monuments: 85.1'
Previously reported distance: 137 links = 90.4'

Type of monument: INDOT Type B, plug in monument box

Depth: flush with adjacent road surface

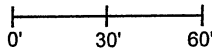
Indiana tie card references:

IN02_T20NR1E34_76

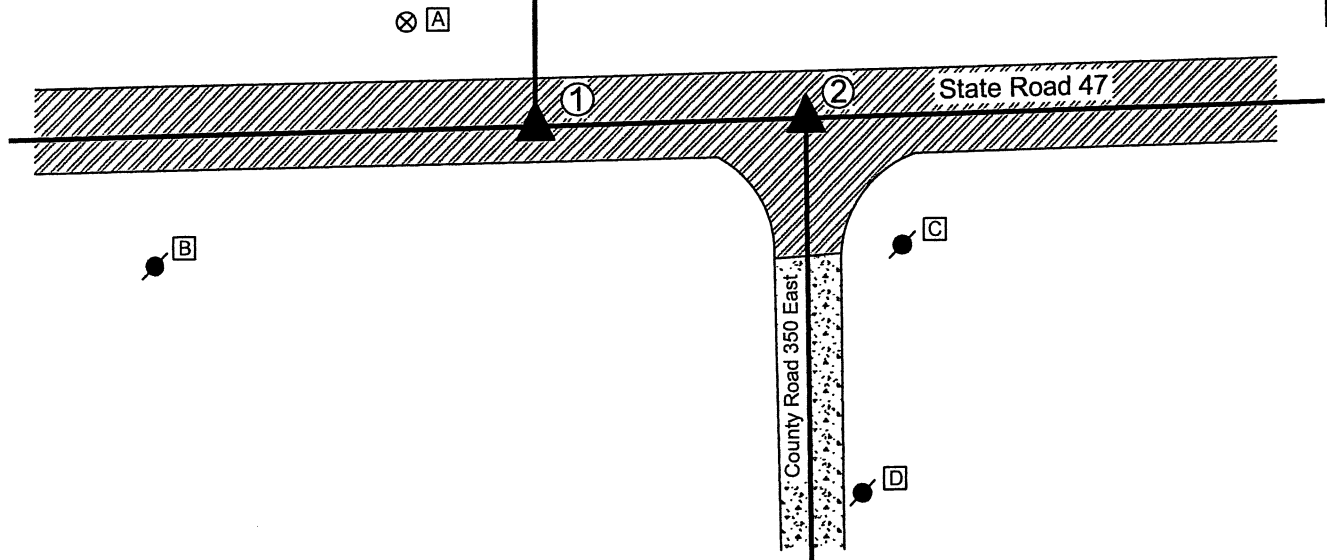
IN02_T19NR1E03_04

CORNER WITNESS DETAIL

SCALE 1" = 60'

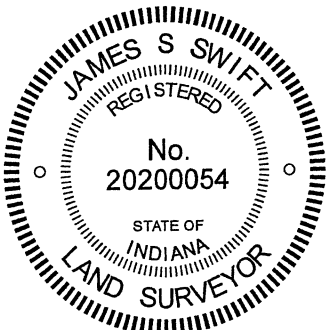


- A - Boone County witness mark, flush, 52.4' to Corner 1, 129.7' to Corner 2
- B - Mag nail set in N. side PWP, 2' a.g. 127.6' to Corner 1, 210.2' to Corner 2
- C - Mag nail set in N. side PWP, 2' a.g. 121.9' to Corner 1, 50.1' to Corner 2
- D - Mag nail set in NW. side PWP, 2' a.g. 154.3' to Corner 1, 117.9' to Corner 2



The INDOT Type B monuments were found in place and held as marking the respective corners. A BCS record of October 8, 1861 states, with respect to Corner 1, "Reestablished, set two rocks. One 16.8 by 6 in. Top Rock 18.10 by 8 in." A BCS record of August 27, 1881 states, with respect to Corner 2, "... 137 links laps from "F" in 34 set Rock 10x8x7 marked +." The reference to "F" in 34 is a reference to Corner 1, as shown hereon. It is noted that the 137 link offset is approximately the average of the original federal closing distances at the northeast and northwest corners of Section 3.

A BCS tie card dated September 1, 1995 shows both corners at 85.44 feet apart, noting Corner 2 to be a P.K. Nail with washer set. A BCS tie card dated 2004 shows both corners as PK Nails with washers, at 85.1 feet apart. Subsequent BCS tie cards, dated June 22, 2005 show both corners as Type "C" Monuments, in the same evident positions as shown on the 2004 tie cards. The monuments found, being INDOT Type B monuments, appear to be the same monuments in the same positions as shown on the 2005 tie cards. It is noted that these monument are approximately five feet closer to each other than the reported distance of 137 links, as noted on the 1881 tie card. No excavation was performed at these corners, as they fall in a state highway. The corners as held by this office in 2004-2006 are held, acknowledging up to 5.4 feet of uncertainty east-west with respect to the previous BCS records. Corner 1 was originally established as a wood post in 1819. Corner 2 is not an original federal corner.



Kenneth E. Hedge
Kenneth E. Hedge, County Surveyor

James S. Swift
James S. Swift, IN LS 20200054

February 17, 2021

Clinton Township

Section 34
T20N, R1E

Section 3
T19N, R1E

SECTION CORNER RECORD

NE 600-400

BOONE COUNTY SURVEYOR'S OFFICE

State Plane grid coordinates NAD83 (2011):

Corner 1: North: 1777577.77 East: 3145401.96 (U.S. survey feet)

Corner 2: North: 1777578.71 East: 3145456.06 (U.S. survey feet)

Type of monument: INDOT type B, plug in monument box

Depth: Flush with adjacent road surface

Indiana tie card references:

IN02_T20NR1E34_80 IN02_T20NR1E35_72

IN02_T19NR1E03_08 IN02_T19NR1E02_00

CORNER WITNESS DETAIL

SCALE 1" = 50'

A - Boone County witness mark, flush,

38.5' to Corner 1, 85.7' to Corner 2

B - Mag nail set in N. side PWP, 2.8' a.g.

77.0' to Corner 1, 126.1' to Corner 2

C - Mag nail set in S. side PWP 2' a.g.

39.7' to Corner 1, 74.7' to Corner 2

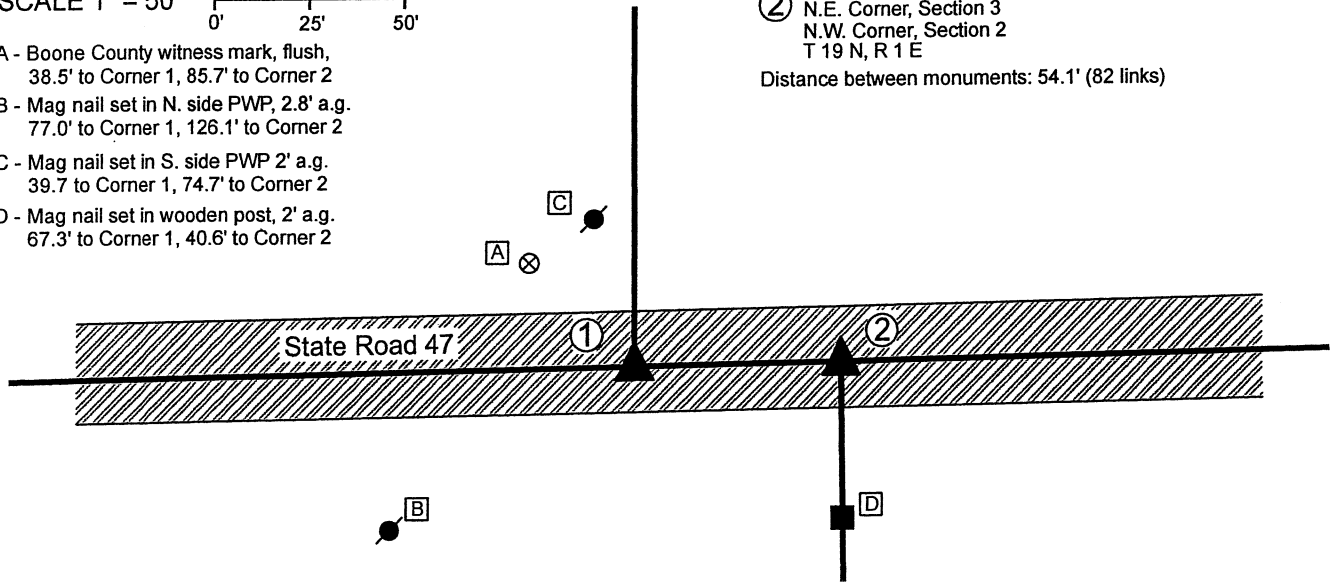
D - Mag nail set in wooden post, 2' a.g.

67.3' to Corner 1, 40.6' to Corner 2

① S.E. Corner, Section 34
S.W. Corner, Section 35
T 20 N, R 1 E

② N.E. Corner, Section 3
N.W. Corner, Section 2
T 19 N, R 1 E

Distance between monuments: 54.1' (82 links)



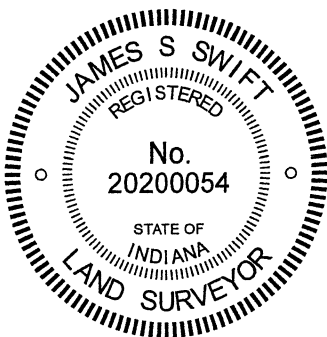
The INDOT Type B monuments were found in place and held as marking the respective corners.

A BCS record of November 6, 1871 states, with respect to Corner 1, "Reestablished from stumps of Elm and rotten roots of Hickory, Set Rock 17.12.12 +."

A BCS record of the same date states, with respect to Corner 2, "Reestablished 82 links East of corner, Sects. 35 & 36, which I found from stumps. Set a Rock 17.11.7 +."

A BCS tie card dated 2004 shows both corners as PK Nails with washers, at 54.12 feet (82 links) apart. Subsequent BCS tie cards, dated June 22, 2005 show both corners as Type "C" Monuments, in the same evident positions as shown on the 2004 tie cards. The monuments found, being INDOT Type B monuments, appear to be the same monuments in the same positions as shown on the 2005 tie cards. It is noted that these monument are located at 54.1 feet apart, matching the original federal closing distance of 82 links, which also matched the 1871 BCS records. No excavation was performed at these corners, as they fall in a state highway. The corners as held by this office in 2004-2006 are held hereon.

Corner 1 was originally established as a wood post in 1819. Corner 2 was originally established as a wood post in 1822.



Kenneth E. Hedge
 Kenneth E. Hedge, County Surveyor

James S. Swift
 James S. Swift, IN LS 20200054

February 17, 2021

Clinton Township

