

SECTION CORNER RECORD

BOONE COUNTY SURVEYOR'S OFFICE

NW 500-700

State Plane grid coordinates NAD83 (2011):
 North: 1772068.94 East: 3087819.95 (U.S. survey feet)

Type of monument: Harrison, 4" disk 'Section Corner'
 Depth: Flush with adjacent road surface

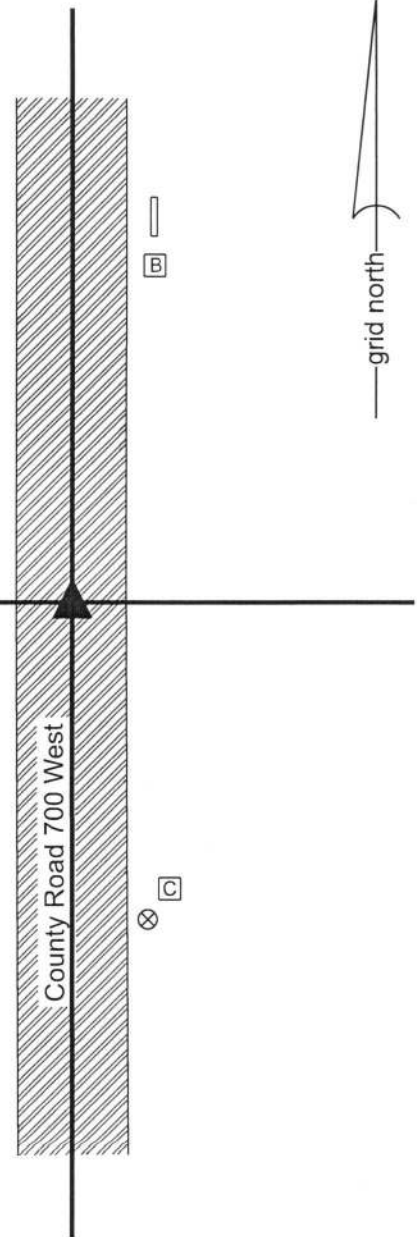
Indiana tie card references:
 IN02_T19NR2W02_80 IN02_T19NR2W01_72
 IN02_T19NR2W11_08 IN02_T19NR2W12_00

CORNER WITNESS DETAIL

SCALE 1" = 30'

- A - Mag nail set in E. side wood post, 3' a.g., 21.5'
- B - S.W. corner, base of conc. headwall, flush, 65.7'
- C - Boone County witness mark, flush, 50.8'

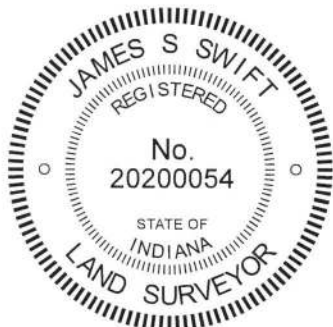
Boone County witness mark is a 3/8" diameter x 2' long rebar bearing a metal cap stamped "Boone County Witness Point."



The Harrison monument was set over a vertical section of railroad rail found. A BCS record dated September 12, 1939 states, with respect to this corner (E) and the corner one half mile west (F), "Located E and F by running line in Sec. 11. E - Set Iron Pin." A BCS tie card dated April 12, 1968 shows the corner as 'No stone.'

This corner falls in an area of substantial fill. Minor excavation was performed on July 17, 2018. Prior to excavation, a 5/8 inch rebar was found at 1 inch deep in the center of the N-S roadway, generally in-line with evidence of occupation to the east and west. Excavation revealed a section of 1/2 inch diameter rebar found at 12 inches deep and a vertical section of railroad rail found at 14 inches deep. The railroad rail is not mentioned on the 1968 tie card but it is considered most likely that the rail was set in association with the creation of that document, as it is known that BCS field crews of that era routinely set vertical sections of railroad rail to mark corners. The 1/2 inch rebar had been situated along the north edge of the rail and the 5/8 inch rebar had been situated slightly south of the rail, being 0.2 foot south of the top, center-of-mass point of the rail. The rail was held as marking the corner and a Harrison monument was set directly over the top of the rail. The 5/8 inch rebar was driven to approximately the same elevation as the top of the rail and left in place. The 1/2 inch rebar was left in place as found.

This corner was originally established as a wood post in 1829.



Kenneth E. Hedge
 Kenneth E. Hedge, County Surveyor

James S. Swift
 James S. Swift, IN LS 20200054
 August 15, 2018

Sugar Creek Township

Section 2 T19N, R2W	Section 1 T19N, R2W
Section 11 T19N, R2W	Section 12 T19N, R2W

SECTION CORNER RECORD

NW 500-750

BOONE COUNTY SURVEYOR'S OFFICE

State Plane grid coordinates NAD83 (2011):

North: 1772065.97 East: 3085179.14 (U.S. survey feet)

Type of monument: Harrison, 4" disk 'Section Corner'

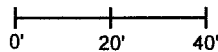
Depth: 3" above surrounding ground

Indiana tie card references:

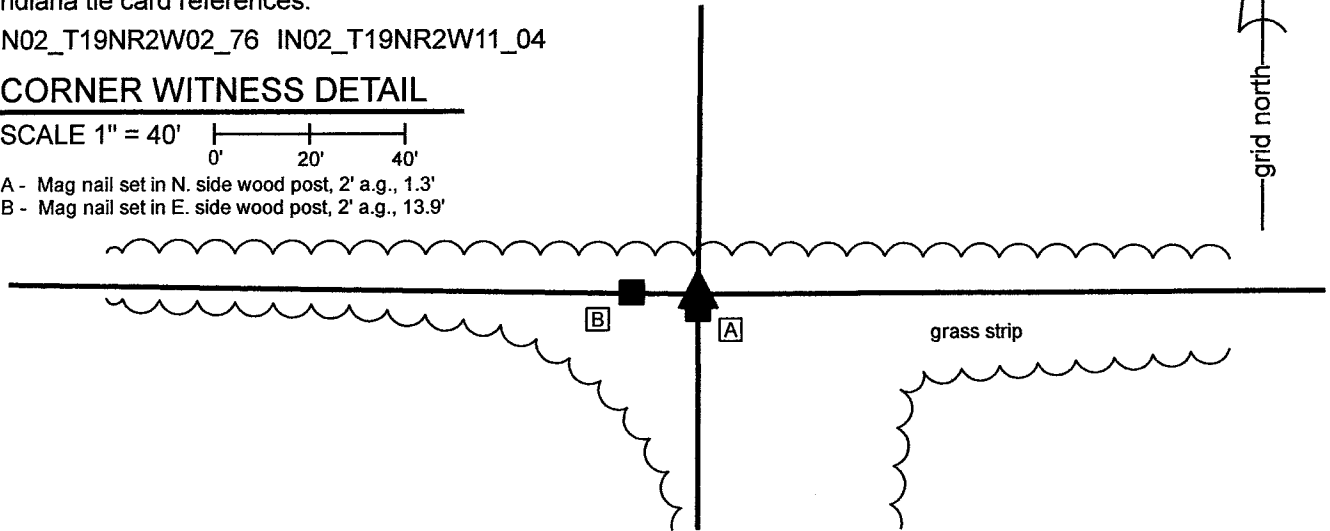
IN02_T19NR2W02_76 IN02_T19NR2W11_04

CORNER WITNESS DETAIL

SCALE 1" = 40'



- A - Mag nail set in N. side wood post, 2' a.g., 1.3'
- B - Mag nail set in E. side wood post, 2' a.g., 13.9'



The Harrison monument was set in-line with ancient wood posts found to the east and west of the corner and in-line with a wood post found adjacent to and south of the corner.

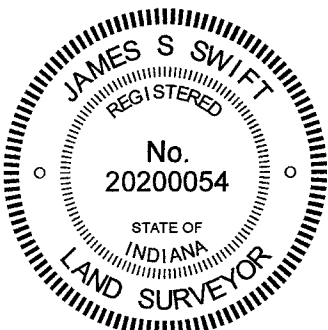
A BCS record dated September 12, 1936 states, with respect to this corner and the southeast corner of Section 2, "Located E and F by running lines in Sec. 11. E - Set Iron Pin. F - Set Iron Pin." No recent BCS tie cards were found referencing this corner, nor were any surveys found in the Office of the Boone County Recorder found which reference this corner.

This corner was investigated and excavated on March 22 through 24, 2021. A round wood post which does not appear to be ancient was found in-line with a field division to the south. The post has fencing to the south, which is cut-off several feet from the corner. The post does not have fencing to the east and west and the post is clearly south of the evidence of older posts to the east and west. Numerous ancient posts were found and located along the field divisions to the east and west. It is noted that the overall evidence of the east-west lines is ambiguous and that a straight line connecting the currently visible evidence of the section corners to the east and west is well north of all of the evidence of old posts. However, it was observed that a position which is on the easterly prolongation of a line of ancient posts found from approximately 660 feet west to 14 feet west of the round post falls at the westerly prolongation of a line of old posts found from approximately 870 feet west of the corner to 251 feet west of the corner. These old posts appear to represent the most reliable and most ancient evidence of the section line and though they do not fall along a straight line, they do fall along lines which can be extended east or west, respectively, to a common point, slightly north of the existing round post. This position also lines up well with the north edge of the existing drive which extends from State Road 75 easterly to the house west of the corner.

Excavation revealed numerous rocks in the vicinity of the round post, none of which appeared to represent monuments purposely set to mark the corner. The iron pin referenced in the 1936 BCS record was not found. It is noted that a large drainage tile is located in this immediate vicinity and that a reasonably new drainage riser is located slightly west of the corner. Clearly, this area has been disrupted in the recent past.

The north-south position of the corner was determined by the aforementioned evidence of old posts to the east and west of the corner. The east-west position of the corner was determined by the existing round post and field division south of the corner. Although the southwest corner of Section 2 has not been fully perpetuated, it is evident that the south line of the southwest quarter of Section 2 is significantly longer than the south line of the southeast quarter. However, the evidence of an ancient wood post along the occupied west line of the east half of the northwest quarter of Section 11 and the evidence of a wood corner post approximately 660 feet west of the subject corner indicates that the subject corner (south quarter corner of Section 2 and north quarter corner of Section 11) would not be appropriately placed any further west than the existing round post and field division.

A Harrison monument was set at the position determined as noted above on March 24, 2021. It is noted that a stone was found in approximately the same position, but the stone did not appear to be reliable evidence of the corner and is considered to be just a rock which happens to be at the position of the corner as determined by the evidence of the ancient posts.

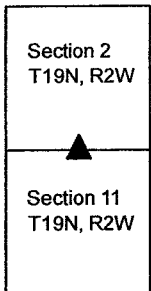


Kenneth E. Hedge
 Kenneth E. Hedge, County Surveyor

James S. Swift
 James S. Swift, IN LS 20200054

April 7, 2021

Sugar Creek Township



SECTION CORNER RECORD

NW 550-800

BOONE COUNTY SURVEYOR'S OFFICE

State Plane grid coordinates NAD83 (2011):

North: 1774759.94 East: 3082548.57 (U.S. survey feet)

Type of monument: Harrison, 4" disk 'Section Corner'

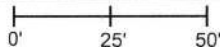
Depth: Flush to North, 4 inches above ground to South

Indiana tie card references:

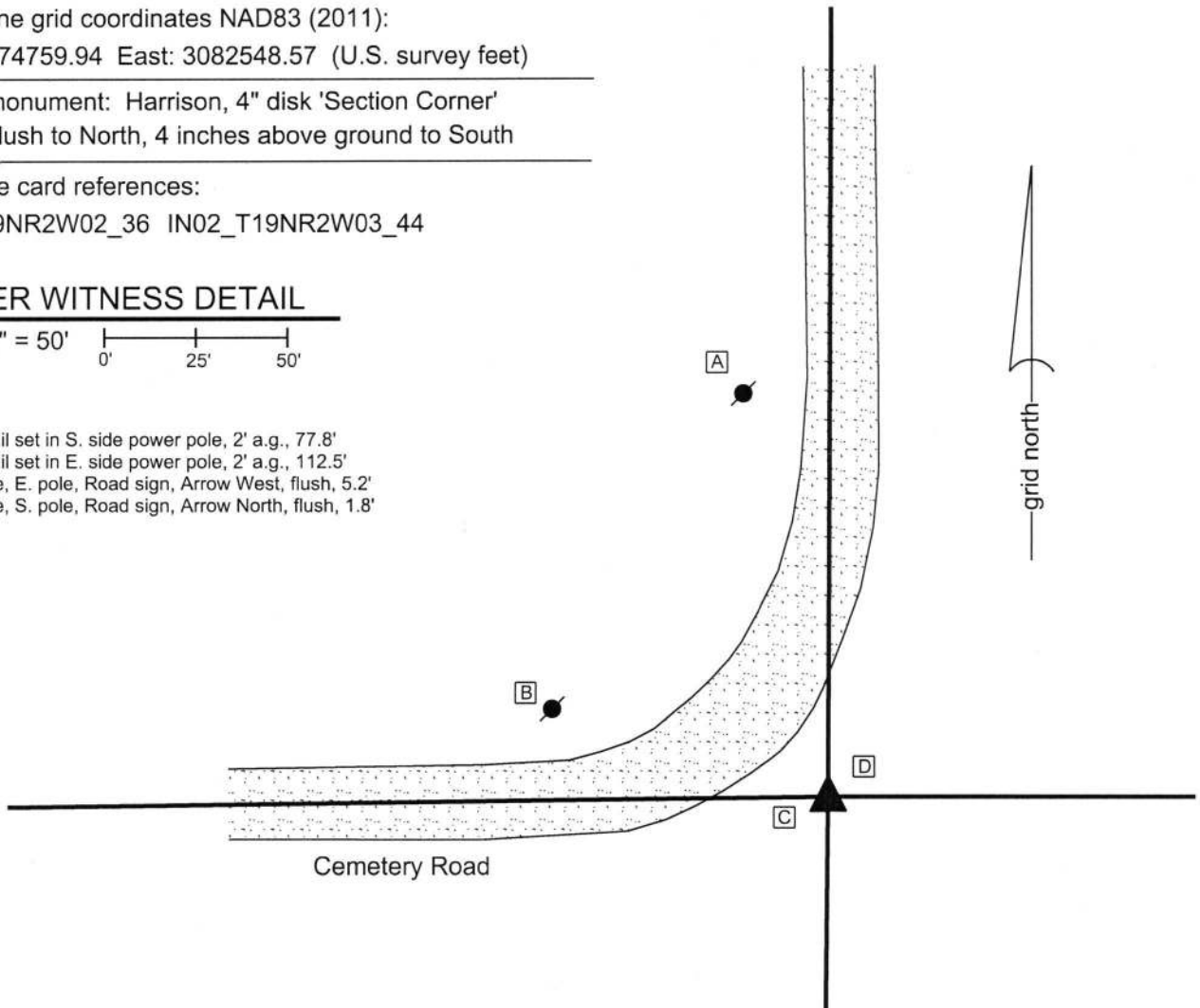
IN02_T19NR2W02_36 IN02_T19NR2W03_44

CORNER WITNESS DETAIL

SCALE 1" = 50'



- A - Mag nail set in S. side power pole, 2' a.g., 77.8'
- B - Mag nail set in E. side power pole, 2' a.g., 112.5'
- C - E. edge, E. pole, Road sign, Arrow West, flush, 5.2'
- D - S. edge, S. pole, Road sign, Arrow North, flush, 1.8'

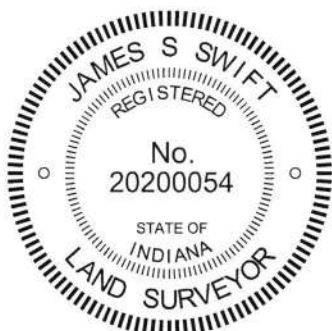


The Harrison monument was set in place of a rebar found.

A BCS record of February 21, 1880 states, with respect to this corner, "Reest. at intersection of lines where set rock 14,12,8 +." No recent BCS tie cards were found referencing this corner.

This corner was excavated on November 3, 2017. Prior to excavation, a 1/2 inch diameter rebar was found with a yellow plastic cap stamped 'Dodge SO288' amidst a large pile of rocks in line with the center of Cemetery Road to the north and west. The position of the rebar is approximately 6 feet north of a position computed proportionally with respect to the original distances for the line between sections 2 and 3, as reported in the original government notes of 1829. It is noted that the final position for neither of the section corners to the north or south has been determined. The rebar fits with the local evidence of the corner in the form of the roadway to the north and west. A stone which matches the dimensions of the rock called in the 1880 record was found amidst the large pile of rocks at the corner. The stone was found haphazardly situated amidst the pile of rocks and did not appear to be fixed in a position to mark the corner. The record stone is therefore believed to be disturbed and displaced. The rebar was held as marking the corner and was replaced with a Harrison monument in the same position.

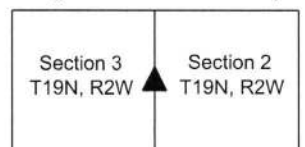
This corner was originally established as a wood post in 1829.



Kenneth E. Hedge
 Kenneth E. Hedge, County Surveyor

James S. Swift
 James S. Swift, IN LS 20200054
 November 21, 2017

Sugar Creek Township



SECTION CORNER RECORD

NW 600-800

BOONE COUNTY SURVEYOR'S OFFICE

State Plane grid coordinates NAD83 (2011):

North: 1777375.70 East: 3082556.81 (U.S. survey feet)

Type of monument: Harrison, 4" disk 'Section Corner'

Depth: Flush with adjacent ground

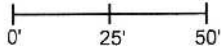
Indiana tie card references:

IN02_T20NR2W34_80 IN02_T20NR2W35_72

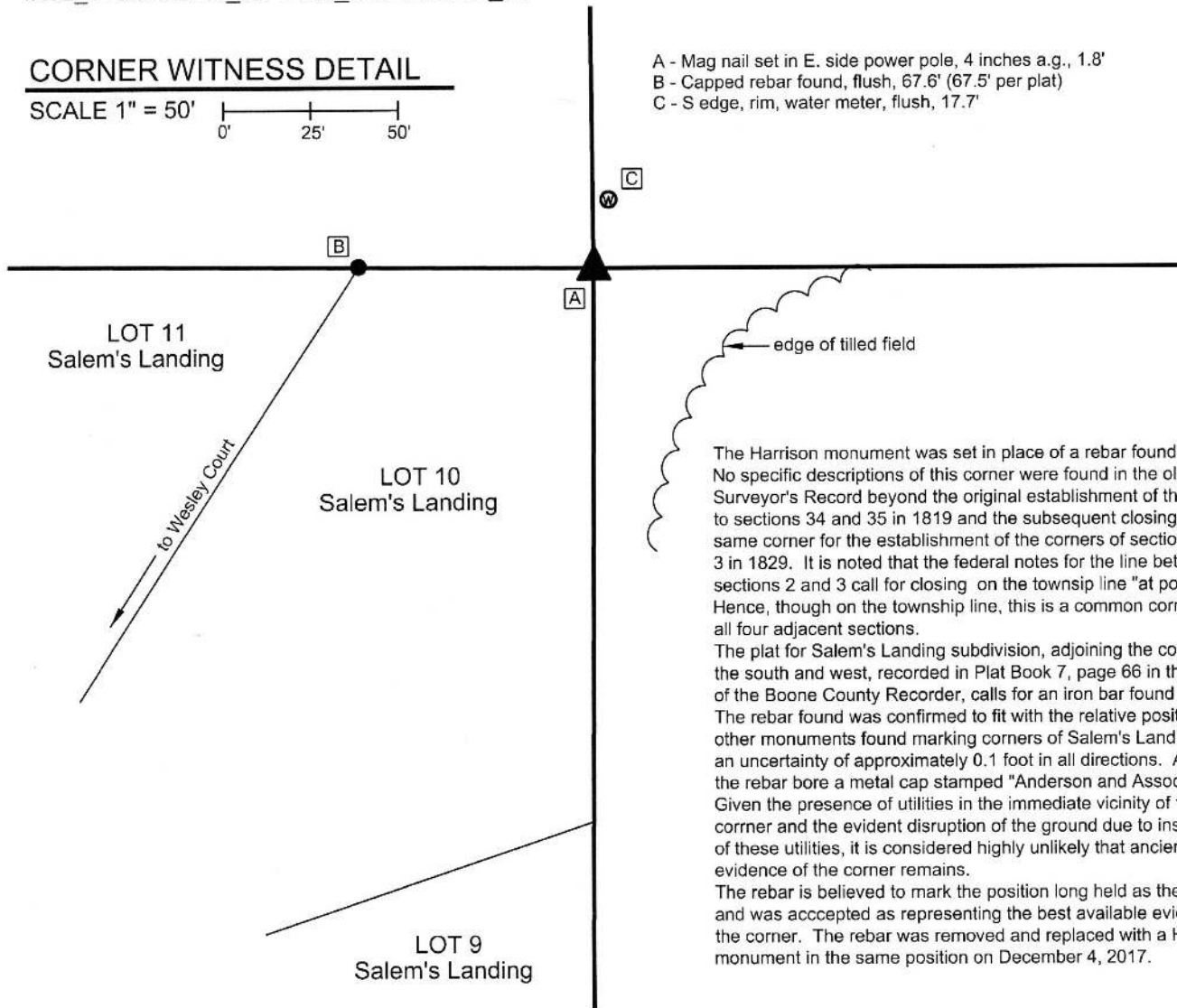
IN02_T19NR2W03_08 IN02_T19NR2W02_00

CORNER WITNESS DETAIL

SCALE 1" = 50'



- A - Mag nail set in E. side power pole, 4 inches a.g., 1.8'
- B - Capped rebar found, flush, 67.6' (67.5' per plat)
- C - S edge, rim, water meter, flush, 17.7'



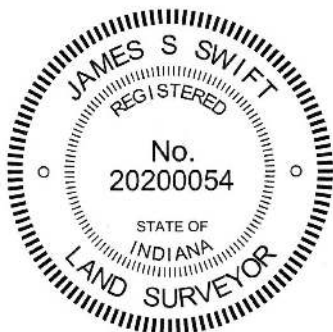
The Harrison monument was set in place of a rebar found. No specific descriptions of this corner were found in the old BCS Surveyor's Record beyond the original establishment of the corner to sections 34 and 35 in 1819 and the subsequent closing on the same corner for the establishment of the corners of sections 2 and 3 in 1829. It is noted that the federal notes for the line between sections 2 and 3 call for closing on the township line "at post." Hence, though on the township line, this is a common corner for all four adjacent sections.

The plat for Salem's Landing subdivision, adjoining the corner to the south and west, recorded in Plat Book 7, page 66 in the Office of the Boone County Recorder, calls for an iron bar found in place. The rebar found was confirmed to fit with the relative positions of other monuments found marking corners of Salem's Landing, with an uncertainty of approximately 0.1 foot in all directions. As found, the rebar bore a metal cap stamped "Anderson and Associates." Given the presence of utilities in the immediate vicinity of the corner and the evident disruption of the ground due to installation of these utilities, it is considered highly unlikely that ancient evidence of the corner remains.

The rebar is believed to mark the position long held as the corner and was accepted as representing the best available evidence of the corner. The rebar was removed and replaced with a Harrison monument in the same position on December 4, 2017.

Sugar Creek Twp

Section 34 T20N, R2W	Section 35 T20N, R2W
Section 3 T19N, R2W	Section 2 T19N, R2W



Kenneth E. Hedge
Kenneth E. Hedge, County Surveyor

James S. Swift
James S. Swift, IN LS 20200054
January 17, 2018