

SECTION CORNER RECORD

NW 500-100

BOONE COUNTY SURVEYOR'S OFFICE

State Plane grid coordinates NAD83 (CORS96):

North: 1772071.05 East: 3119444.88 (U.S. survey feet)

Type of monument: Harrison, 4" disk 'Section Corner'

Depth: six inches below adjacent gravel road surface

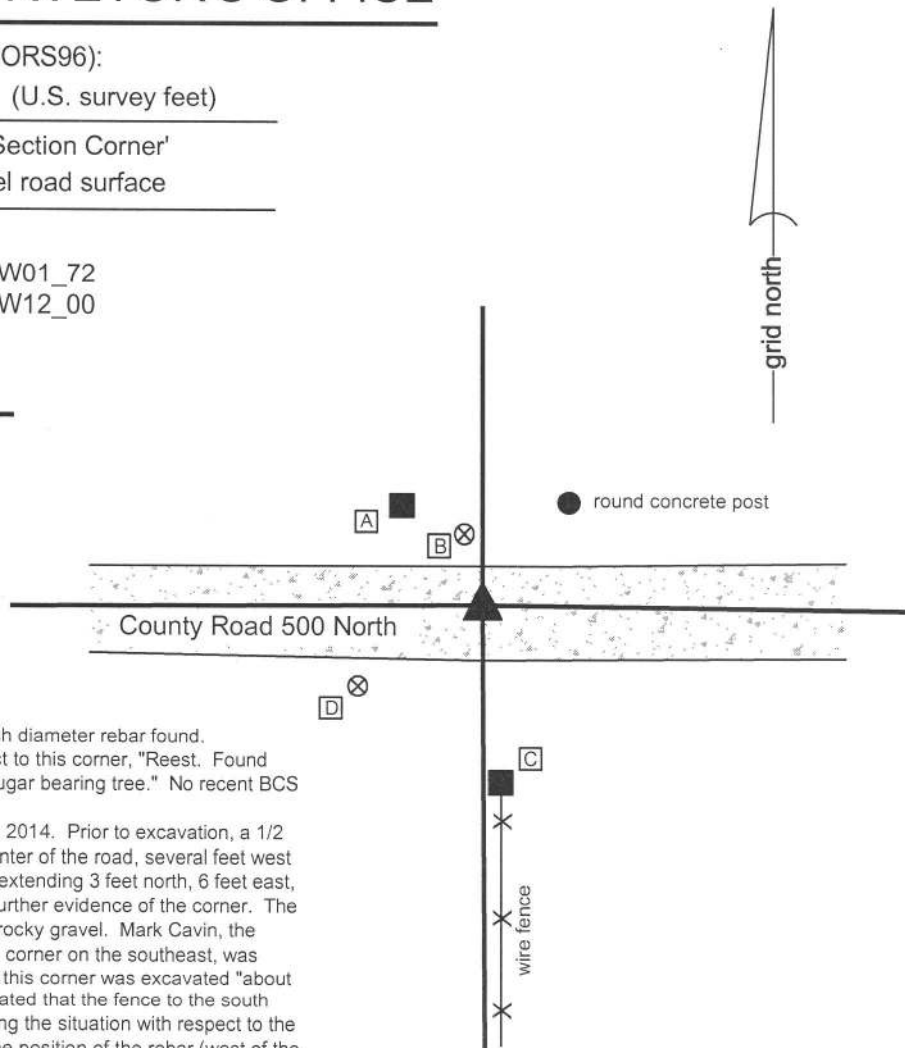
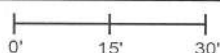
Indiana tie card references:

IN02_T19NR1W02_80 IN02_T19NR1W01_72

IN02_T19NR1W11_08 IN02_T19NR1W12_00

CORNER WITNESS DETAIL

SCALE 1" = 30'



The Harrison monument was set in place of a 1/2 inch diameter rebar found. A BCS record of March 5-7, 1863 states, with respect to this corner, "Reest. Found stone at corner and marked it. Found roots of one sugar bearing tree." No recent BCS tie cards were found referencing this corner.

Excavation was performed at this corner on June 30, 2014. Prior to excavation, a 1/2 inch diameter rebar was found in the approximate center of the road, several feet west of the old fence to the south. Excavation of an area extending 3 feet north, 6 feet east, 5 feet south and 3 feet west of the rebar yielded no further evidence of the corner. The road bed in this vicinity was 4 to 6 inches of a large, rocky gravel. Mark Cavin, the resident and owner of the property which adjoins this corner on the southeast, was present during the excavation. Mr. Cavin stated that this corner was excavated "about 30 years ago and they found something." He also stated that the fence to the south had been there as long he could remember. Analyzing the situation with respect to the type of monument found (1/2 inch diameter rebar), the position of the rebar (west of the fence) and the time frame of previous excavation per Mr. Cavin's testimony, it is reasonable to conclude that the stone may have been found at that time and replaced with the 1/2 inch rebar. It is known that it was common practice for field crews in that era to remove stones, if found, and replace them with metal monuments, but not necessarily fully document the activity. Many stones are known to have been replaced with 1/2 inch rebars. The fact that the rebar is not in line with the fence is taken as evidence in support of this. It is common for stones to be found a short distance one side or the other of a fence, but it is typical that metal monuments set at estimated positions without the benefit of older evidence, such as a stone, to be set more in line with the fence. It is further noted that the rebar also fit very well with deed distances relative to monumentation and evidence of occupation for property corners to the east. The rebar was accepted as the best available evidence of the corner. The rebar was removed and replaced with a Harrison monument in the same position.

This corner was originally established as a wood post in 1822.

- A - Mag nail set in S.E. side wood post, 2' a.g., 19.2'
- B - Boone County witness mark, flush, 11.5'
- C - Mag nail set in N. side wood post, 2' a.g., 26.2'
- D - Boone County witness mark, flush, 23.2'

Boone County witness mark is a 3/8" diameter x 2' long rebar bearing a metal cap stamped "Boone County Witness Point."



Kenneth E. Hedge
 Kenneth E. Hedge, County Surveyor

James S. Swift
 James S. Swift, IN LS 20200054
 March 27, 2015

Washington Township

Section 2 T19N, R1W	Section 1 T19N, R1W
Section 11 T19N, R1W	Section 12 T19N, R1W

SECTION CORNER RECORD

BOONE COUNTY SURVEYOR'S OFFICE

NW 500-150

State Plane grid coordinates NAD83 (CORS96):
 North: 1772063.34 East: 3116797.27 (U.S. survey feet)

Type of monument: Harrison, 4" disk 'Section Corner'
 Depth: One inch below adjacent road surface

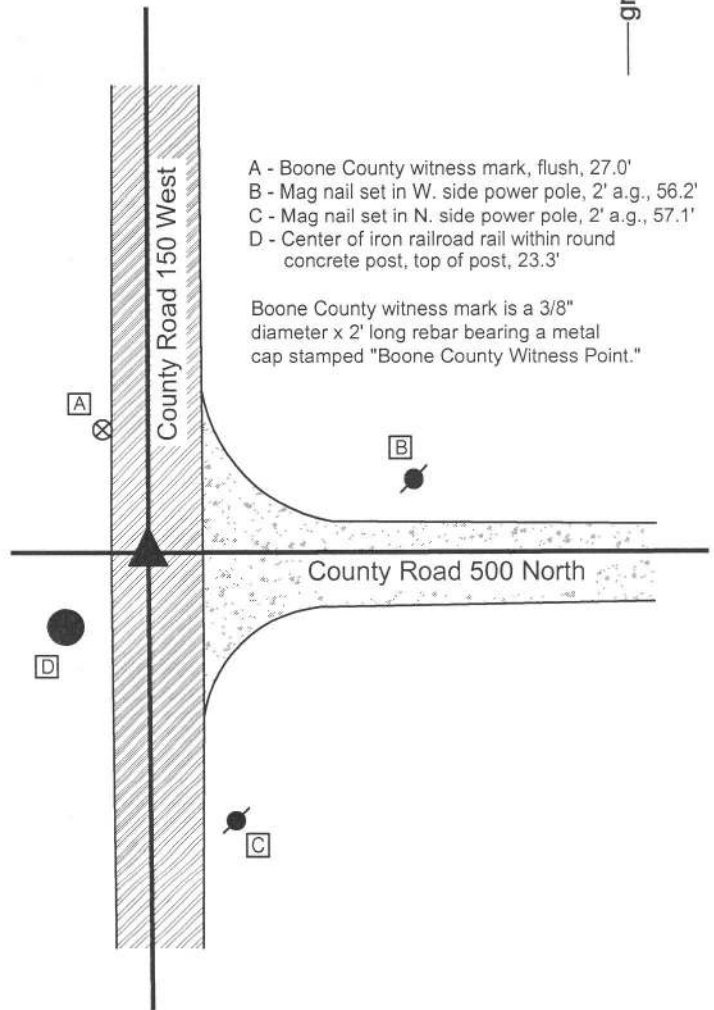
Indiana tie card references:
 IN02_T19NR1W02_72
 IN02_T19NR1W11_08



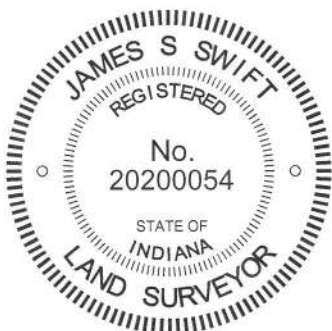
CORNER WITNESS DETAIL

SCALE 1" = 40'

The Harrison monument was set over the top of a stone found. A BCS record of March 30-31, 1866 states, with respect to this corner, "Reest'd from trees. Set Rock 16x14x9, 1 on top." No recent BCS tie cards were found referencing this corner. Excavation was performed at this corner on June 6, 2014. Prior to excavation, a Mag nail was found 2 inches below the surface, in a hole in the asphalt roadway. Excavation revealed a railroad spike found directly below the Mag nail. Further excavation revealed a stone found at 14 inches deep, north of the spike. The stone was haphazard in its orientation, being neither vertical nor aligned with cardinal directions. The stone measured 12x8x9 inches and was entirely within the fill material of the roadway. This stone was removed and the stone described in the 1866 record was found below at 2 feet deep. With 7 inches of the top exposed, the lower stone measured 9 inches E-W by 11 inches N-S. The south side of the stone was sloping and clearly becoming larger. Using a probe pushed vertically along the south edge of the stone, it was determined that the full N-S extent of the stone was 14 inches, matching two of the dimensions described in the 1866 record. The total height of the stone was not measured, but it was observed that the stone was embedded in the clay layer below the road and appeared to be vertical. The stone had a rounded top, the high point of which was coincident with the approximate center of the top. No specific marks were identified. The stone was held as marking the corner and a Harrison monument was set directly over the top, center, high point of the stone. The Mag nail and railroad spike, removed during excavation, had been 1.7 feet south of this point. This corner was originally established as a wood post in 1822.



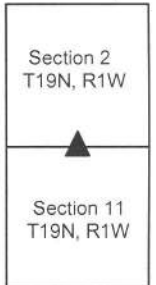
- A - Boone County witness mark, flush, 27.0'
 - B - Mag nail set in W. side power pole, 2' a.g., 56.2'
 - C - Mag nail set in N. side power pole, 2' a.g., 57.1'
 - D - Center of iron railroad rail within round concrete post, top of post, 23.3'
- Boone County witness mark is a 3/8" diameter x 2' long rebar bearing a metal cap stamped "Boone County Witness Point."



Kenneth E. Hedge
 Kenneth E. Hedge, County Surveyor

James S. Swift
 James S. Swift, IN LS 20200054
 March 27, 2015

Washington Township



PHOTOGRAPHIC DOCUMENTATION

Date of photography: June 6, 2014

The upper stone found in the fill material.



The lower stone, being the stone described in the 1866 record, exposed and washed.



View from above the stone, looking east along County Road 500 North.



View from above the stone, looking south along County Road 150 West (Witt Road.)



For details and documentation, refer to related sheet "Section Corner Record."

SECTION CORNER RECORD

NW-500-200

BOONE COUNTY SURVEYOR'S OFFICE

State Plane grid coordinates NAD83 (2011):

North: 1771950.07 East: 3114264.48 (U.S. survey feet)

Type of monument: 5/8 inch diameter rebar with cap 'Boone County Surveyor'

Depth: six inches above adjacent ground, at east edge, concrete post

Indiana tie card references:

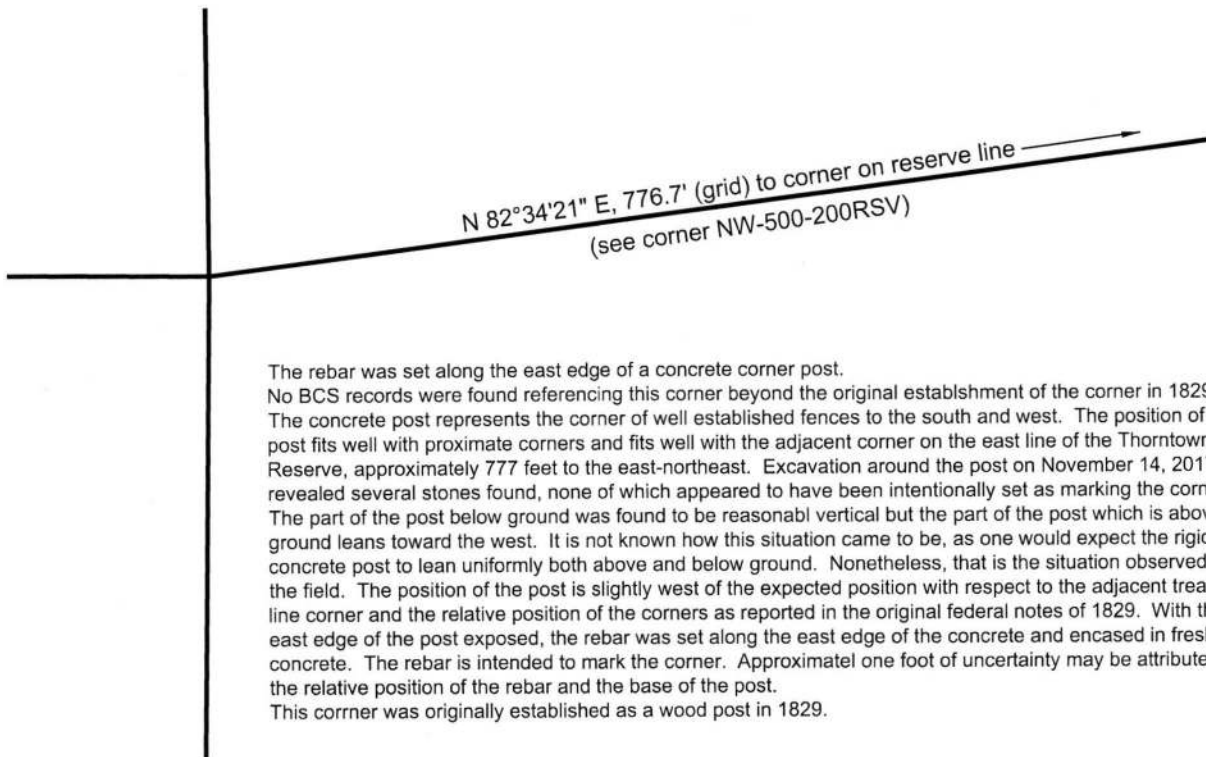
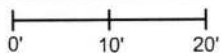
IN02_T19NR1W03_80 IN02_T19NR1W02_72

IN02_T19NR1W10_08 IN02_T19NR1W11_00

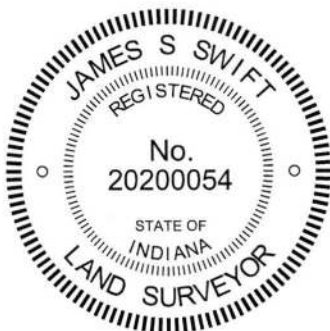


CORNER WITNESS DETAIL

SCALE 1" = 20'



The rebar was set along the east edge of a concrete corner post. No BCS records were found referencing this corner beyond the original establishment of the corner in 1829. The concrete post represents the corner of well established fences to the south and west. The position of the post fits well with proximate corners and fits well with the adjacent corner on the east line of the Thorntown Reserve, approximately 777 feet to the east-northeast. Excavation around the post on November 14, 2017 revealed several stones found, none of which appeared to have been intentionally set as marking the corner. The part of the post below ground was found to be reasonable vertical but the part of the post which is above ground leans toward the west. It is not known how this situation came to be, as one would expect the rigid concrete post to lean uniformly both above and below ground. Nonetheless, that is the situation observed in the field. The position of the post is slightly west of the expected position with respect to the adjacent treaty line corner and the relative position of the corners as reported in the original federal notes of 1829. With the east edge of the post exposed, the rebar was set along the east edge of the concrete and encased in fresh concrete. The rebar is intended to mark the corner. Approximatel one foot of uncertainty may be attributed to the relative position of the rebar and the base of the post. This corner was originally established as a wood post in 1829.



Kenneth E. Hedge
Kenneth E. Hedge, County Surveyor

James S. Swift
James S. Swift, IN LS 20200054
January 10, 2018

Washington Township

Section 3 T19N, R1W	Section 2 T19N, R1W
Section 10 T19N, R1W	Section 11 T19N, R1W

SECTION CORNER RECORD

BOONE COUNTY SURVEYOR'S OFFICE

NW 500-200RSV
 Angle Point on the
 Thorntown Reserve Line

State Plane grid coordinates NAD83 (2011):
 North: 1772050.41 East: 3115034.14 (U.S. survey feet)

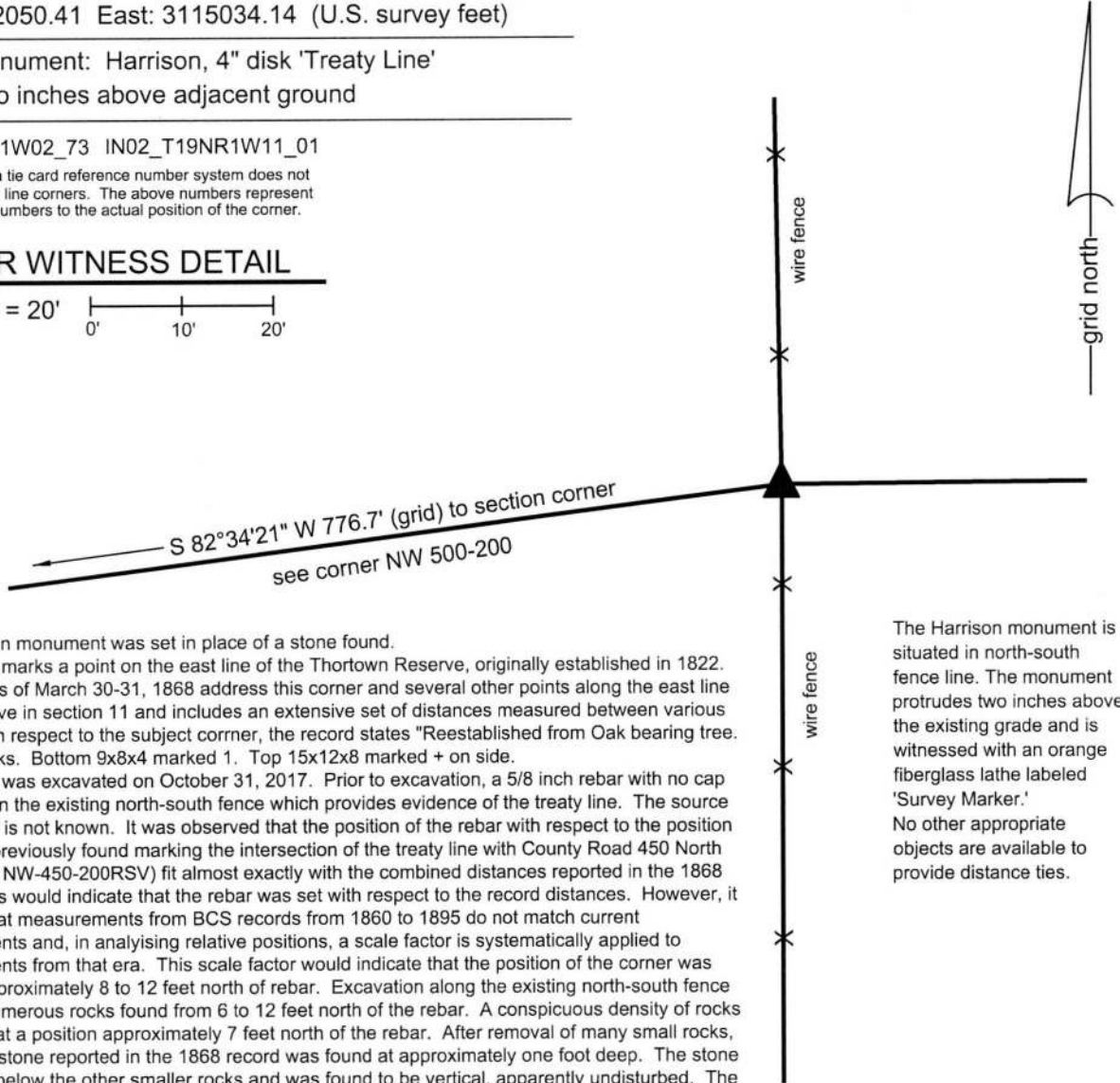
Type of monument: Harrison, 4" disk 'Treaty Line'
 Depth: Two inches above adjacent ground

IN02_T19NR1W02_73 IN02_T19NR1W11_01

Note: the Indiana tie card reference number system does not account for treaty line corners. The above numbers represent closest discrete numbers to the actual position of the corner.

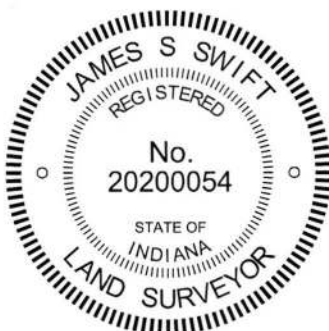
CORNER WITNESS DETAIL

SCALE 1" = 20'



The Harrison monument was set in place of a stone found. This corner marks a point on the east line of the Thorntown Reserve, originally established in 1822. BCS records of March 30-31, 1868 address this corner and several other points along the east line of the reserve in section 11 and includes an extensive set of distances measured between various points. With respect to the subject corner, the record states "Reestablished from Oak bearing tree. Set two rocks. Bottom 9x8x4 marked 1. Top 15x12x8 marked + on side. This corner was excavated on October 31, 2017. Prior to excavation, a 5/8 inch rebar with no cap was found in the existing north-south fence which provides evidence of the treaty line. The source of the rebar is not known. It was observed that the position of the rebar with respect to the position of a stone previously found marking the intersection of the treaty line with County Road 450 North (see corner NW-450-200RSV) fit almost exactly with the combined distances reported in the 1868 record. This would indicate that the rebar was set with respect to the record distances. However, it is known that measurements from BCS records from 1860 to 1895 do not match current measurements and, in analysing relative positions, a scale factor is systematically applied to measurements from that era. This scale factor would indicate that the position of the corner was likely be approximately 8 to 12 feet north of rebar. Excavation along the existing north-south fence revealed numerous rocks found from 6 to 12 feet north of the rebar. A conspicuous density of rocks was found at a position approximately 7 feet north of the rebar. After removal of many small rocks, the bottom stone reported in the 1868 record was found at approximately one foot deep. The stone was found below the other smaller rocks and was found to be vertical, apparently undisturbed. The stone measured 9 inches tall by 8 inches N-S by 4 inches E-W with a flat, vertical east face. A single mark across the top appeared to represent the "1" described in the record. The upper stone was not found and is believed to have been removed previously. The stone was held as marking the corner. The stone was removed and replaced with a Harrison monument in the same position. The rebar was left in place, 6.9 feet south and 0.5 foot east of the corner.

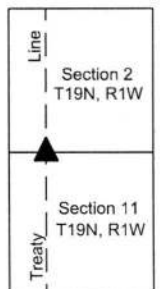
The Harrison monument is situated in north-south fence line. The monument protrudes two inches above the existing grade and is witnessed with an orange fiberglass lathe labeled 'Survey Marker.' No other appropriate objects are available to provide distance ties.



Kenneth E. Hedge
 Kenneth E. Hedge, County Surveyor

James S. Swift
 James S. Swift, IN LS 20200054
 January 10, 2018

Washington
 Township



SECTION CORNER RECORD

NW 550-200

BOONE COUNTY SURVEYOR'S OFFICE

State Plane grid coordinates NAD83 (CORS96):

North: 1774595.15 East: 3114230.82 (U.S. survey feet)

Type of monument: Harrison, 4" disk 'Section Corner'

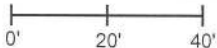
Depth: six inches below adjacent gravel road surface

Indiana tie card references:

IN02_T19NR1W03_44 IN02_T19NR1W02_36

CORNER WITNESS DETAIL

SCALE 1" = 40'



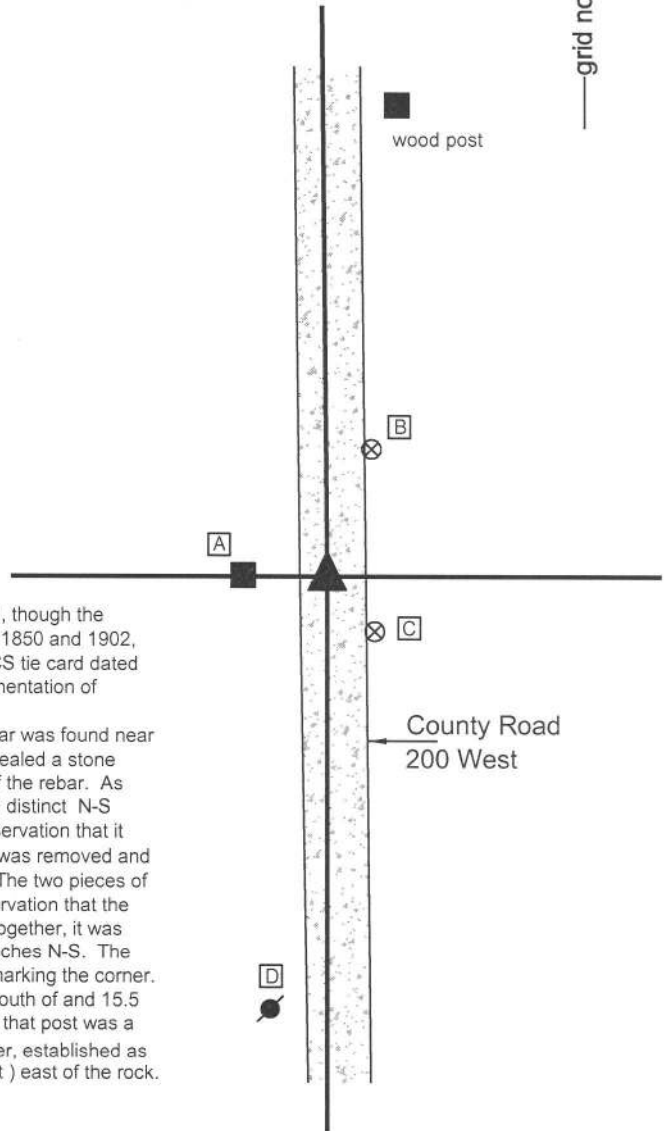
- A - Mag nail set in E. side wood post, 2' a.g., 15.2'
- B - Boone County witness mark, flush, 28.2'
- C - Boone County witness mark, flush, 15.1'
- D - Mag nail set in N. side power pole, 2' a.g., 89.5'

Boone County witness mark is a 3/8" diameter x 2' long rebar bearing a metal cap stamped "Boone County Witness Point."

The Harrison monument was set in the position of a stone found.

No specific descriptions of this corner were found in the BCS Surveyor's Record, though the corner is mentioned as the terminal point for measurements in records of 1833, 1850 and 1902, implying that at that time, some marker was present from which measure. A BCS tie card dated November 7, 2006 shows the corner as a 5/8 inch diameter rebar with no documentation of source.

This corner was excavated on June 26, 2014. Prior to excavation, a 5/8 inch rebar was found near the surface of the road. The rebar fit with the 2006 distance ties. Excavation revealed a stone found near the surface of the road approximately 1 foot south and 1 foot west of the rebar. As found the stone was 16 inches N-S by 12 inches E-W by 6 inches tall and had a distinct N-S ridge, approximately 1 foot long. Careful inspection of the stone yielded the observation that it appeared to have been previously knocked over towards the south. The stone was removed and another piece of the stone was found below, near the north edge of the stone. The two pieces of rock clearly fit together and the presence of the lower piece confirmed that observation that the main body of the stone had been displaced. With both pieces of the stone put together, it was apparent that the original stone had been 18 inches tall, 12 inches E-W and 6 inches N-S. The position of the lower, apparently undisturbed, portion of the stone was held as marking the corner. A Harrison monument was set in this position. Notably, the stone was slightly south of and 15.5 feet east of the old wood post on the west side of the road. At the S.W. base of that post was a stone which bore the characteristics of a witness rock. The position of the corner, established as documented above, is at the same N-S position as this rock and 1 rod (16.5 feet) east of the rock. This corner was originally established as a wood post in 1829.




Kenneth E. Hedge, County Surveyor


James S. Swift, IN LS 20200054
March 27, 2015

Washington Township

Section 3 T19N, R1W	Section 2 T19N, R1W
------------------------	------------------------

SECTION CORNER RECORD

NW 550-200

BOONE COUNTY SURVEYOR'S OFFICE

State Plane grid coordinates NAD83 (2011):

North: 1774595.15 East: 3114230.82 (U.S. survey feet)

Type of monument: Harrison, 4" disk 'Section Corner'

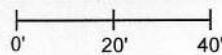
Depth: six inches below adjacent gravel road surface

Indiana tie card references:

IN02_T19NR1W03_44 IN02_T19NR1W02_36

CORNER WITNESS DETAIL

SCALE 1" = 40'



- A - Mag nail set in E. side wood post, 2' a.g., 15.2'
- B - Boone County witness mark, flush, 28.2'
- C - Boone County witness mark, flush, 15.1'
- D - Mag nail set in N. side power pole, 2' a.g., 89.5'

Boone County witness mark is a 3/8" diameter x 2' long rebar bearing a metal cap stamped "Boone County Witness Point."

The Harrison monument was set in the position of a stone found.

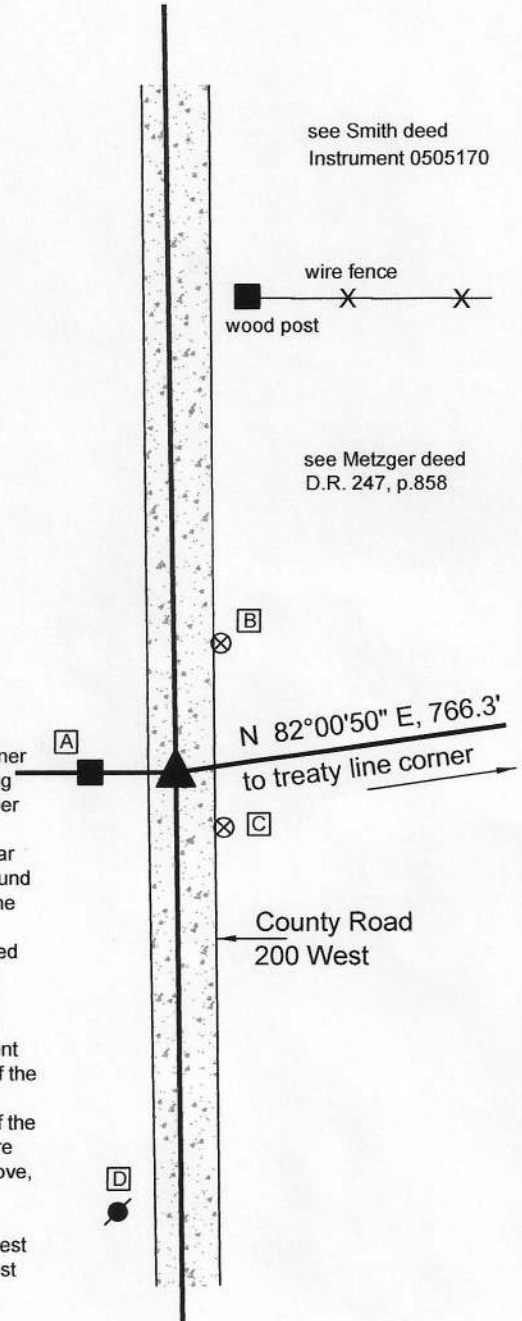
No specific descriptions of this corner were found in the BCS Surveyor's Record, though the corner is mentioned as the terminal point for measurements in records of 1833, 1850 and 1902, implying that at that time, some marker was present from which measure. A BCS tie card dated November 7, 2006 shows the corner as a 5/8 inch diameter rebar with no documentation of source.

This corner was excavated on June 26, 2014. Prior to excavation, a 5/8 inch rebar was found near the surface of the road. The rebar fit with the 2006 distance ties. Excavation revealed a stone found near the surface of the road approximately 1 foot south and 1 foot west of the rebar. As found the stone was 16 inches N-S by 12 inches E-W by 6 inches tall and had a distinct N-S ridge, approximately 1 foot long. Careful inspection of the stone yielded the observation that it appeared to have been previously knocked over towards the south. The stone was removed and another piece of the stone was found below, near the north edge of the stone. The two pieces of rock clearly fit together and the presence of the lower piece confirmed that observation that the main body of the stone had been displaced. With both pieces of the stone put together, it was apparent that the original stone had been 18 inches tall, 12 inches E-W and 6 inches N-S. The position of the lower, apparently undisturbed, portion of the stone was held as marking the corner. A Harrison monument was set in this position. Notably, the stone was slightly south of and 15.5 feet east of the old wood post on the west side of the road. At the S.W. base of that post was a stone which bore the characteristics of a witness rock. The position of the corner, established as documented above, is at the same N-S position as this rock and 1 rod (16.5 feet) east of the rock.

This corner was originally established as a wood post in 1829.

This drawing was revised June 30, 2020 to accurately reflect the angled north line of the southwest quarter of section 2 and to provide deed references which demonstrate that the existing east-west fence, not the angled part of the quarter section line, is the line between Smith and Metzger.

See also BCS corner NW 550-200RSV.

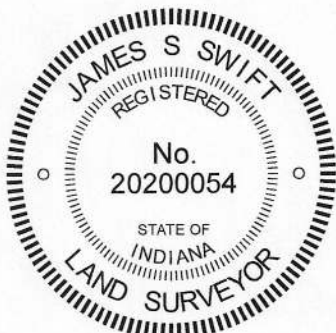


see Smith deed
Instrument 0505170

wire fence
wood post

see Metzger deed
D.R. 247, p.858

County Road
200 West



Kenneth E. Hedge

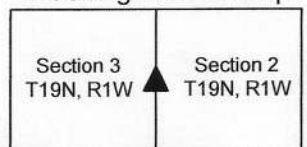
 Kenneth E. Hedge, County Surveyor

James S. Swift

 James S. Swift, IN LS 20200054

March 27, 2015 (revised June 30, 2020)

Washington Township



PHOTOGRAPHIC DOCUMENTATION

Date of photography: June 26, 2014

The combined pieces of the stone removed from the road, stood up and viewed from the side.



The stone removed from the road. The top portion of the stone was mostly horizontal. The piece at the bottom left part of the stone was found apparently undisturbed.



View from above the stone looking west. The witness stone discussed on the attached sheet is visible at the bottom left of the post.



View from the south looking across the stone, exposed as originally found, and north along County Road 200 West.



For details and documentation, refer to related sheet "Section Corner Record."

SECTION CORNER RECORD NW 550-200RSV

BOONE COUNTY SURVEYOR'S OFFICE

East line,
Thorntown Reserve

State Plane grid coordinates NAD83 (2011):

North: 1774701.62 East: 3114989.70 (U.S. survey feet)

Type of monument: Harrison, 4" disk 'Treaty Line'

Depth: Two inches above adjacent ground

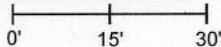
Indiana tie card references:

IN02_T19NR1W02_36

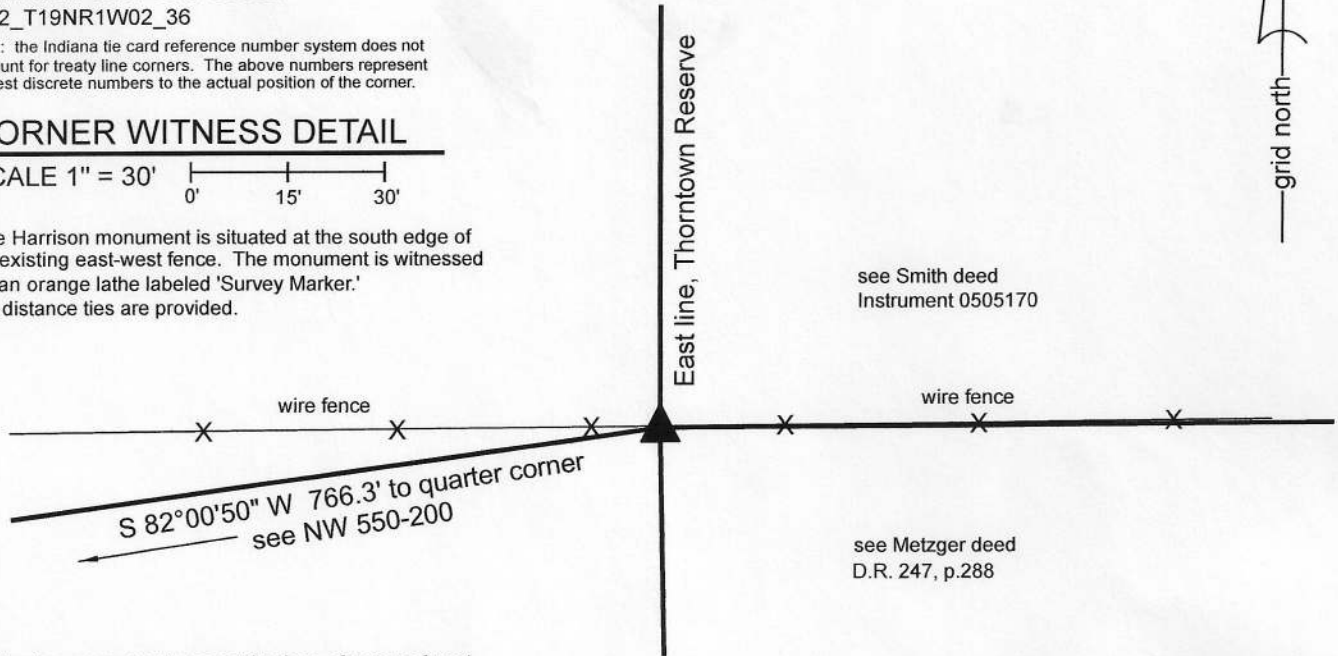
Note: the Indiana tie card reference number system does not account for treaty line corners. The above numbers represent closest discrete numbers to the actual position of the corner.

CORNER WITNESS DETAIL

SCALE 1" = 30'



The Harrison monument is situated at the south edge of an existing east-west fence. The monument is witnessed by an orange lathe labeled 'Survey Marker.'
No distance ties are provided.



The Harrison monument was set in place of a stone found.

This corner represents a corner on the east line of the Thorntown Reserve, a 10 square mile tract held out of the Treaty of St. Mary's, 1818. This is not an original corner of the PLSS, but is described clearly in the BCS Surveyor's Record. The corner is monumented and documented to reduce confusion about lines and corners, particularly with respect to the treaty line, in this vicinity.

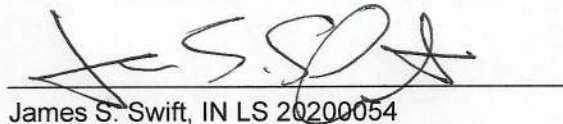
The treaty line through this section is discussed at length in an entry of March 3-7, 1863, in which the Boone County Surveyor, David M. Burns, explains that he found that the section previously had not been subdivided correctly and that the treaty line was too far east. However, given that the damage had already been done, so to speak, the previously established line was held, stating, "The interested parties all agree to this line now as a final settlement for this line as far as this section is concerned." The subject corner (denoted "u") is shown as being established during the same survey, March 3-7, 1863, with the description, "found point but drove not stake." The corner is shown as being monumented in a subsequent entry of March 15, 1875 (made by the same surveyor, Burns), stating, "Set rock 15.12.7 +."

This corner was excavated on April 14-16, 2020. Prior to excavation, substantial reconnaissance had been performed to establish the relative positions of the available evidence of the treaty line as well as evidence of the aforementioned Burns' surveys. The stone called for in the 1875 record was found slightly south of an existing east-west fence, precisely in-line with fencing found providing evidence of the treaty line from between 1/2 mile south (see BCS Corner NW 500-200RSV) and approximately 1200 feet south of the subject corner. The stone was leaning toward the south as found but appeared to be otherwise undisturbed. It measured 12 inches E-W by 7 inches N-S by 15 inches tall, as stood up. Remnants of a wood brace were found at the east edge of the stone. This was clearly the stone set by Burns in 1875 and it fits remarkably well with the available evidence of the treaty line. The stone was held as marking the treaty line corner and was replaced with a Harrison monument stamped "Treaty Line" on April 16, 2020.

It is noted that the north line of the southwest quarter of the section bends at this point, connecting the treaty corner with the west quarter corner of the section (see BCS Corner NW 550-200). The existing fence continues in an east-west orientation. This does not create uncertainties with respect to the adjoining properties, as the deeds for those properties (Metzger, D.R. 247, p.288 and Smith, Instrument 0505170) contain sufficient calls to establish the line between the properties as being along the fence and account for the offset between the east-west fence and the west quarter corner (98 feet as called in the deeds, 99 feet as measured in the field).



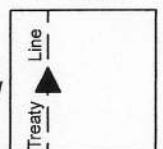

Kenneth E. Hedge, County Surveyor


James S. Swift, IN LS 20200054

June 30, 2020

Washington
Township

Section 2
T19N, R1W



SECTION CORNER RECORD

NW 600-100

BOONE COUNTY SURVEYOR'S OFFICE

State Plane grid coordinates NAD83 (2011):

Corner 1: North: 1777272.78 East: 3119542.02 (U.S. survey feet)

Corner 2: North: 1777272.76 East: 3119487.85 (U.S. survey feet)

Type of monument: INDOT Type B, plug in monument box

Depth: flush with adjacent road surface

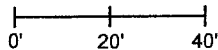
Indiana tie card references:

IN02_T20NR1W35_80 IN02_T20NR1W36_72

IN02_T19NR1W05_08 IN02_T19NR1W06_00

CORNER WITNESS DETAIL

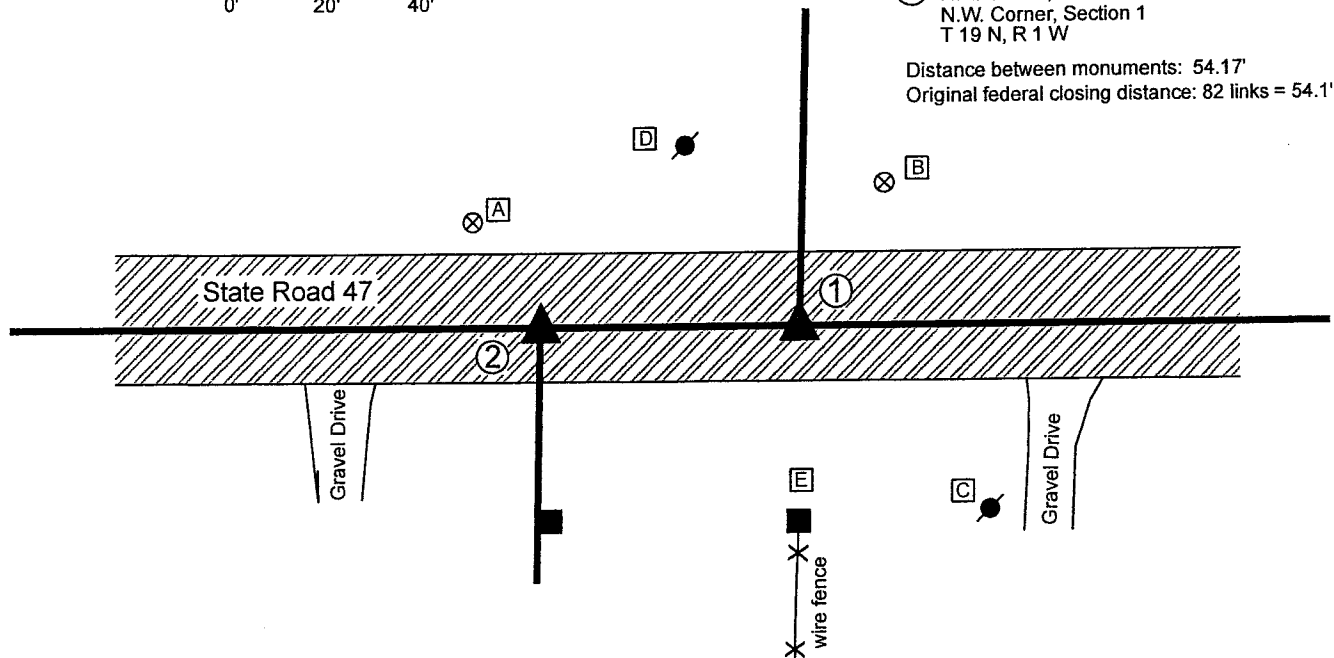
SCALE 1" = 40'



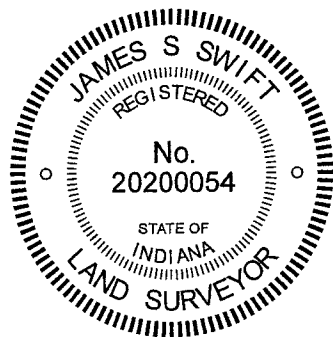
- A - Boone County witness mark, flush, 72.1' to Corner 1, 26.3' to Corner 2
- B - Boone County witness mark, flush, 34.6' to Corner 1, 77.9' to Corner 2
- C - Mag nail set in N. side power pole, 2' a.g., 55.3' to Corner 1, 101.6' to Corner 2
- D - Mag nail set in S. side power pole, 3' a.g., 44.5' to Corner 1, 48.3' to Corner 2
- E - Top, center of wood corner post 40.5' to Corner 1, 67.6' to Corner 2

- ① S.E. Corner, Section 35
S.W. Corner, Section 36
T 20 N, R 1 W
- ② N.E. Corner, Section 2
N.W. Corner, Section 1
T 19 N, R 1 W

Distance between monuments: 54.17'
Original federal closing distance: 82 links = 54.1'



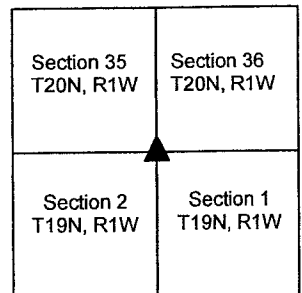
The INDOT Type B monuments were found in place. A BCS record of February 16, 1855 states, with respect to Corner 1, "Relocated. Set Stone. No Tree." Another BCS record of the same date states, with respect to Corner 2, "Stone marked S1,2." A BCS tie card dated June 22, 2005 shows both corners as P.K. Nails with washers. A Surveyor's Report for INDOT, recorded as Instrument 200700000086 in the Office of the Boone County Recorder, shows both corners as INDOT Type B Monuments and states that the monument at Corner 1 was set in place of a P.K. Nail with washer and Corner 2 was set in place of a Mag Nail, with references to INDOT plat RS-28322 (SR47). The monuments found appear to be the same monuments, in the same positions, as those shown on the 2007 INDOT report. The separation of the monuments is within 0.1 of a foot of the federal closing distance reported for Corner 2 in 1822. The positions of the corners fit reasonably well with the relative positions of proximate corners to the east and west. No excavation was performed at these corners, as they fall in a state highway. The existing monuments are held as the best available evidence of the respective corners. Corner 1 was originally set as a wood post in 1819. Corner 2 is not an original federal corner.



Kenneth E. Hedge
Kenneth E. Hedge, County Surveyor

James S. Swift
James S. Swift, IN LS 20200054
January 26, 2021

Washington Township



SECTION CORNER RECORD

NW 600-200

BOONE COUNTY SURVEYOR'S OFFICE

State Plane grid coordinates NAD83 (2011):

Corner 1: North: 1777276.10 East: 3114207.33 (U.S. survey feet)

Corner 2: North: 1777276.21 East: 3114184.82 (U.S. survey feet)

Type of monument: INDOT Type B, plug in monument box

Depth: Flush with adjacent road surface

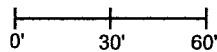
Indiana tie card references:

IN02_T20NR1W34_80 IN02_T19NR1W35_72

IN02_T19NR1W04_08 IN02_T19NR1W03_00

CORNER WITNESS DETAIL

SCALE 1" = 60'

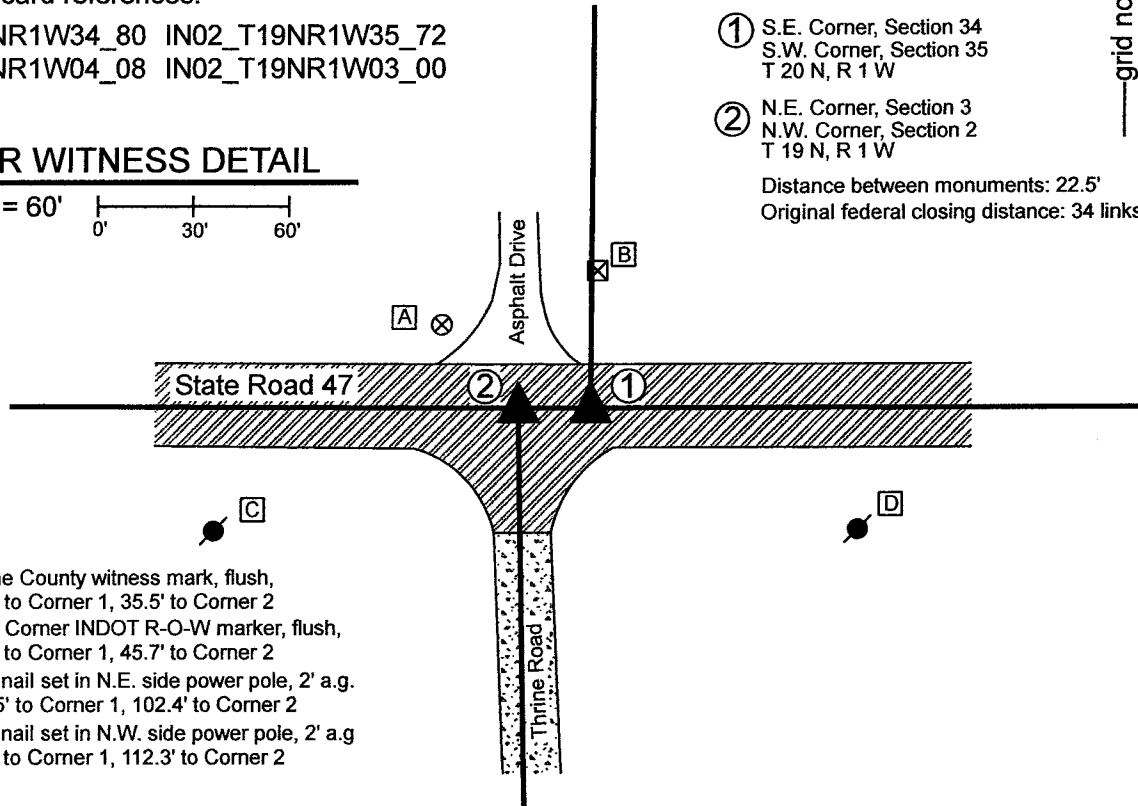


① S.E. Corner, Section 34
S.W. Corner, Section 35
T 20 N, R 1 W

② N.E. Corner, Section 3
N.W. Corner, Section 2
T 19 N, R 1 W

Distance between monuments: 22.5'

Original federal closing distance: 34 links (22.4')



- A - Boone County witness mark, flush, 53.4' to Corner 1, 35.5' to Corner 2
- B - S.W. Corner INDOT R-O-W marker, flush, 40.1' to Corner 1, 45.7' to Corner 2
- C - Mag nail set in N.E. side power pole, 2' a.g. 123.5' to Corner 1, 102.4' to Corner 2
- D - Mag nail set in N.W. side power pole, 2' a.g. 91.4' to Corner 1, 112.3' to Corner 2

The INDOT Type B monuments were found in place and held as marking the respective corners.

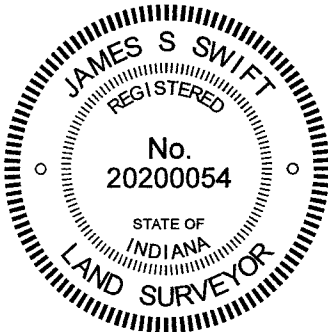
A BCS record of February 21, 1920 states, with respect to Corner 1, "Set rock, 14x8x8." No specific descriptions of Corner 2 were found in the BCS Surveyor's Record beyond the establishment of the corner as a wood post in 1829.

A BCS tie card dated June 22, 2005 shows both corners as P.K. Nails. No BCS tie card was found showing the found Type B monuments, though the respective positions of the two monuments agree substantially with the positions shown on the 2005 tie card. It is believed that the current monuments were set in the same, or nearly the same, positions as held on this 2005 tie card. A Surveyor's Report prepared for INDOT by TBird Design Services, recorded as Instrument 200700000086 in the Office of the Boone County Recorder shows both corners as INDOT Type B monuments and states that the monuments were set in place of Mag Nails after the resurfacing of S.R. 47 per INDOT plas RS-28322 (SR 47). The positions of the found monuments agree with those shown on this report. Please refer to page 30 of 33 of said Instrument 200700000086.

The position of Corner 2 agrees with local evidence in the form of being at the intersection of the east-west state road and the county road to the south. The position of Corner 1 is not supported by local evidence, but agrees with the relative position of Corner 2 with respect to the original federal closing distance of 34 links.

Corner 1 was originally established as a wood post in 1819. Corner 2 was originally established as a wood post in 1829.

Washington Township



Kenneth E. Hedge
 Kenneth E. Hedge, County Surveyor

James S. Swift
 James S. Swift, IN LS 20200054

January 12, 2021

Section 34 T20N, R1W	Section 35 T20N, R1W
Section 3 T19N, R1W	Section 2 T19N, R1W