

SECTION CORNER RECORD

NE 500-400

BOONE COUNTY SURVEYOR'S OFFICE

State Plane grid coordinates NAD83 (2011):

North: 1772240.31 East: 3145512.40 (U.S. survey feet)

Type of monument: 24" length of 5/8-inch diameter rebar with aluminum cap stamped 'Boone County Surveyor'

Depth: Fourteen inches below surrounding ground

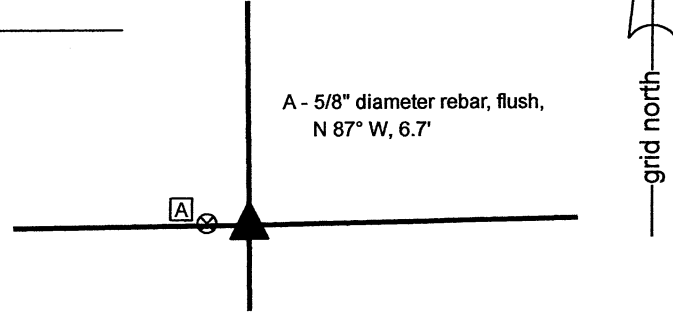
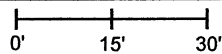
Indiana tie card references:

IN02_T19NR1E02_72 IN02_T19NR1E03_80

IN02_T19NR1E10_08 IN02_T19NR1E11_00

CORNER WITNESS DETAIL

SCALE 1" = 30'



The rebar with metal cap stamped 'Boone County Surveyor' was set at a computed position.

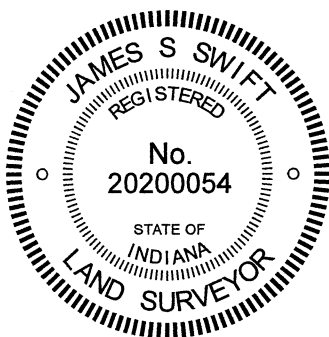
No specific descriptions of this corner were found in the BCS Surveyor's Record beyond the original establishment of the corner as a wood post in 1822.

No recent BCS tie cards were found referencing this corner, nor were any surveys recorded in the Office of the Boone County Recorder found specifically referencing the corner.

This corner has been investigated several times between 2017 and 2021. The corner falls in a tilled field. A 5/8-inch rebar was found in 2021. The rebar is flush with the ground with no cap and does not appear to be old. This rebar had not been found previously and no record of it being set was found in the county records. Evidence of the line between the southwest quarter of Section 2 and southeast quarter of Section 3 was found in the form of an old fence north of Elizaville Road, newer fencing south of the road and an iron pipe evidently marking the southeast corner Grinstead property in Section 3, Instrument 2015006355, Boone County Recorder. A monument called as being at the intersection of Elizaville Road and the east line of the southeast quarter of section 3 on a survey recorded as Instrument 2020012268 was not found. Evidence of the line between the southeast quarter of Section 3 and the northeast quarter of Section 10 was found in the form of steel t-post at an old fence intersection (wood corner post found on the ground nearby) west of Elizaville Road. Evidence of the line between the southwest quarter of Section 2 and the northwest quarter of Section 11 was found in the form of numerous wood posts and standing fence. The subject corner is also referenced in the description of the Jones property in Section 3, Instrument 2019001022. Rebars with metal caps stamped Carl Anderson ENGR were found marking or witnessing several corners of this property.

Based on analysis of the various evidence noted above, a position for the corner was computed at the intersection of the southerly prolongation of a line connecting the Harrison monument at the east quarter corner of Section 3 (see BCS Corner NE 550-400) through the iron pipe at the southeast corner of the Grinstead property and the westerly prolongation of a line connecting the Harrison monument at the south quarter corner of Section 2 (see BCS Corner NE 500-450) through wood posts found 320 feet and 565 feet, respectively, east of the computed position. This position falls 6.6 feet east and 0.5 foot south of the rebar found flush in the tilled field and falls 3.4 feet east of a position computed with respect to the found Anderson rebars and deed calls in Instrument 2019001022. The line between the southeast quarter of Section 3 and southwest quarter of Section 2, established by holding the computed position, fits remarkably well with the fencing found on each side of Elizaville Road. The line between the northeast quarter of Section 10 and the northwest quarter of Section 11 fits remarkably well with a post found on the north side of County Road 475 and the implied deed distance of 5 chains east of that line, per Instrument 200600002317. The post and fence evidence to the east and west also fit well with the computed position. A wood corner post found providing the local evidence of the northeast corner of the northwest quarter of the northwest quarter of Section 11 falls 4.8 feet south and 3.2 feet east of a computed midpoint. This variation represents the least best-fit of the evidence, but also supports the establishment of the corner as east of the found rebar and computed position with respect to the aforementioned Anderson rebars. It is noted that the deed for the property surrounding the corner, Starkey, was not found. The references to that document in the transfer books in the Boone County Auditors Office direct the researcher to the deed for a different property. Hence, the description of this property was not utilized in determining the position of the corner.

As noted above, the position for the corner was computed with respect the preponderance of physical evidence and dependent deed references. The computed position was held. A rebar with metal cap stamped 'Boone County Surveyor' was set at 14 inches deep in the tilled field on November 23, 2021. The existing rebar, flush with the field, was left in place and is noted as a reference tie.



Kenneth E. Hedge
 Kenneth E. Hedge, County Surveyor

James S. Swift
 James S. Swift, IN LS 20200054

December 1, 2021

Clinton Township

| | |
|-------------------------|-------------------------|
| Section 3 T19N, R1E | Section 2 T19N, R1E |
| Section 10 T19N, R1E | Section 11 T19N, R1E |

SECTION CORNER RECORD

BOONE COUNTY SURVEYOR'S OFFICE

NE 500-450

State Plane grid coordinates NAD83 (CORS96):
 North: 1772293.21 East: 3148098.16 (U.S. survey feet)

Type of monument: Harrison, 4" disk 'Section Corner'
 Depth: two inches above adjacent ground

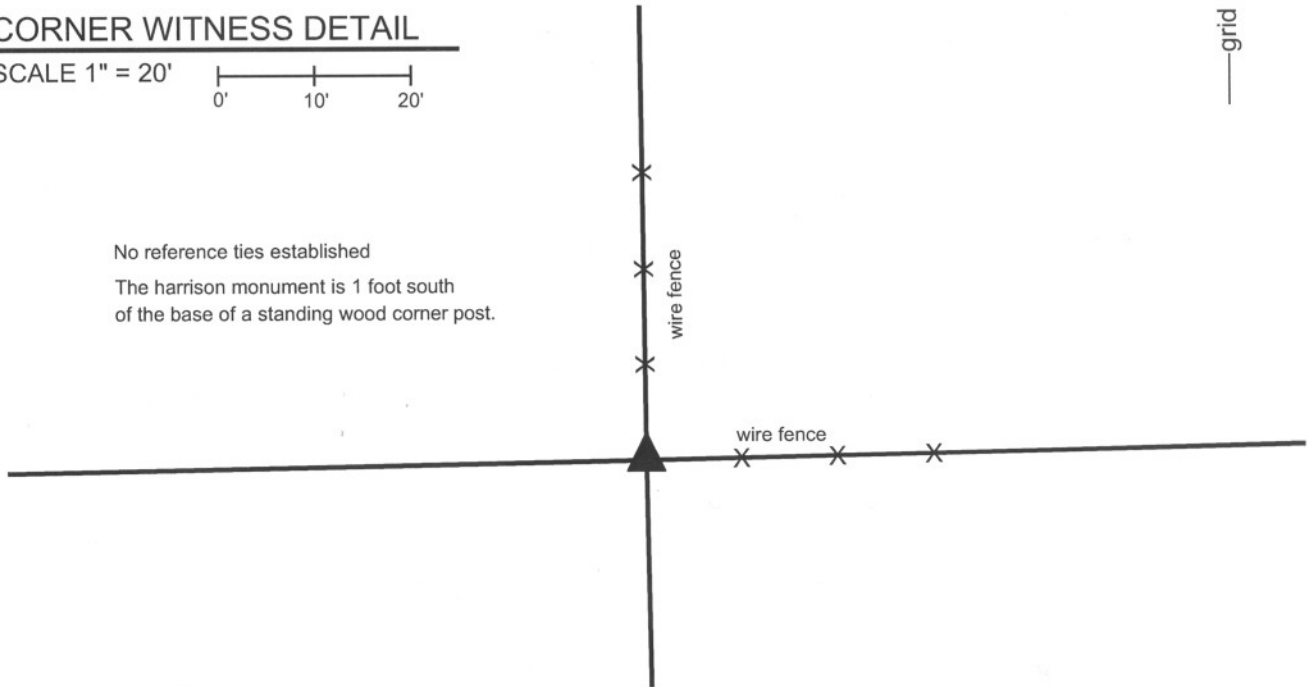
Indiana tie card references:
 IN02_T19NR1E02_76
 IN02_T19NR1E11_04



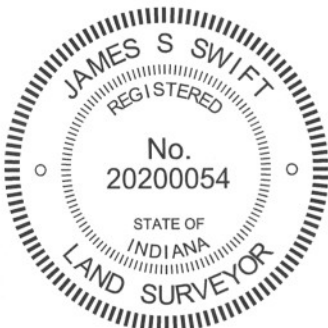
CORNER WITNESS DETAIL

SCALE 1" = 20'
 0' 10' 20'

No reference ties established
 The harrison monument is 1 foot south
 of the base of a standing wood corner post.



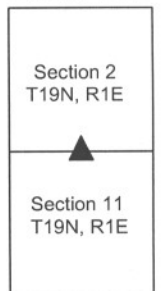
The harrison monument was set in place of a rebar found and the remnants of an old post found. A BCS record of November 14-15, 1872 states "found by intersection of lines." A BCS record of February 7, 1876 states "Reestablished at intersection of lines. Set Rock 10.16.16 in + above this another 23.18.12 +". No recent BCS tie cards were found referencing this corner. This corner was originally excavated on October 24, 2011. Prior to excavation a 5/8 inch diameter rebar was found 1 foot south of an old wood corner post with existing fence to the north and cut-off fence to the west. The rebar was in line with fence to the east which was not attached to the post. Excavation at the south edge of the post revealed that the rebar was driven into the remains of an old post with several brace rocks around it. None of the rocks appeared to be purposely set as corner stones. The stones described in the 1876 record were not found. A rock which was 2 inches larger in each dimension than the record stone, being 25" x 20" x 14" was found lying on top of the ground approximately 4 feet ENE of the rebar and remant post. The stone was not embedded in the dirt, no marks were found and no further evidence was found under the rock. The old post remnants, through which the rebar was driven, were accepted as the best available evidence of the corner. The rebar and post remnants were removed and the harrison monument was set in their place.
 This corner was originally established as a wood post in June, 1822.



Kenneth E. Hedge
 Kenneth E. Hedge, County Surveyor

James S. Swift
 James S. Swift, IN LS 20200054
 March 1, 2012

Clinton Twp



PHOTOGRAPHIC DOCUMENTATION

Date of photography: October 31 & November 1, 2011

The standing post and the base of the old post, with rebar, from above.



The base of the old post, with rebar.



The standing post and the base of the old post, with rebar, from above and east.



The harrison monument, set in place of the base of the old post and rebar.



For details and documentation, refer to related sheet "Section Corner Record."

SECTION CORNER RECORD

BOONE COUNTY SURVEYOR'S OFFICE

NE 500-500

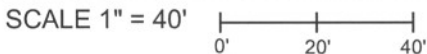
State Plane grid coordinates NAD83 (CORS96):
 North: 1772347.94 East: 3150712.09 (U.S. survey feet)

Type of monument: Harrison, 4" disk 'Section Corner'
 Depth: One inch below adjacent road surface

Indiana tie card references:
 IN02_T19NR1E02_80 IN02_T19NR1E01_72
 IN02_T19NR1E11_08 IN02_T19NR1E12_00



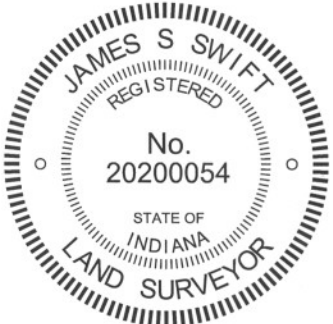
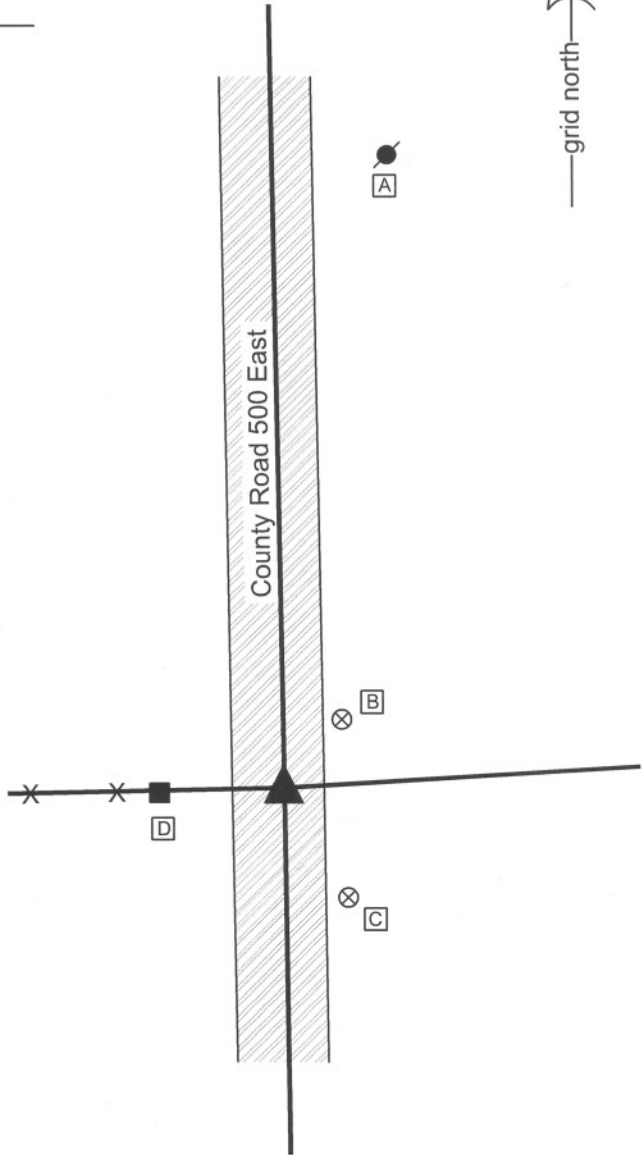
CORNER WITNESS DETAIL



- A - Mag nail set in S. side power pole, 2' a.g., 131.71'
- B - Boone County witness mark, flush, 18.57'
- C - Boone County witness mark, flush, 26.44'
- D - Mag nail set in E. side wood post, 2' a.g., 24.76'

Boone County witness mark is a 3/8" diameter x 2' long rebar bearing a metal cap stamped "Boone County Witness Point."

The harrison monument was set over a stone found.
 A BCS record of June 26-27 states "Think I found from where one tree stood but had been set out of its place by road hands about two days before. S.W. Wiley placed rock at the corner."
 A BCS tie card August 15, 1868 states "no stone." A BCS tie card dated May 30, 1991 shows the corner as a rail found. A BCS tie card dated August 3, 2005 shows the corner as a harrison monument with no documentation of source.
 This corner was excavated on July 13, 2011. Prior to excavation a harrison monument was visible at the surface. Excavation revealed a section of vertical railroad rail found at 7 inches deep, below the harrison monument. Further excavation revealed a stone found at 11 inches deep. With 8 inches of the top of the stone exposed, it measures 8 inches E-W by 11 inches N-S and is clearly larger than this at deeper points, particularly in the N-S dimension. The stone is embedded in the clay layer below the road, with the top of the stone protruding approximately 2 inches out of the clay into the bottom of the road bed. The stone was accepted as the best available evidence of the corner. The top 6 inches of the stone were encased in concrete and the harrison monument was set over the top, high point of the stone. The previously existing harrison and railroad rail, both removed during excavation, had been 0.4 feet south and 1.6 feet west of the stone. While the 1968 tie card does not specify monumentation set, it is most likely that the rail was set in association with the creation of that tie card. Clearly, the statement "no stone" was erroneous.
 This corner was originally established as a wood post in June, 1822.



Kenneth E. Hedge
 Kenneth E. Hedge, County Surveyor

James S. Swift
 James S. Swift, IN LS 20200054
 March 1, 2012

Clinton Township

| | |
|-------------------------|-------------------------|
| Section 2 T19N, R1E | Section 1 T19N, R1E |
| Section 11 T19N, R1E | Section 12 T19N, R1E |

PHOTOGRAPHIC DOCUMENTATION

Date of photography: July 13, 2011

View of the stone from above and north.



View of the stone from above and west.



View from the east, showing the top of the stone and the old post on the west side of the road.



View from the south, looking across the stone and north along County Road 500 East.



For details and documentation, refer to related sheet "Section Corner Record."

SECTION CORNER RECORD

NE 550-400

BOONE COUNTY SURVEYOR'S OFFICE

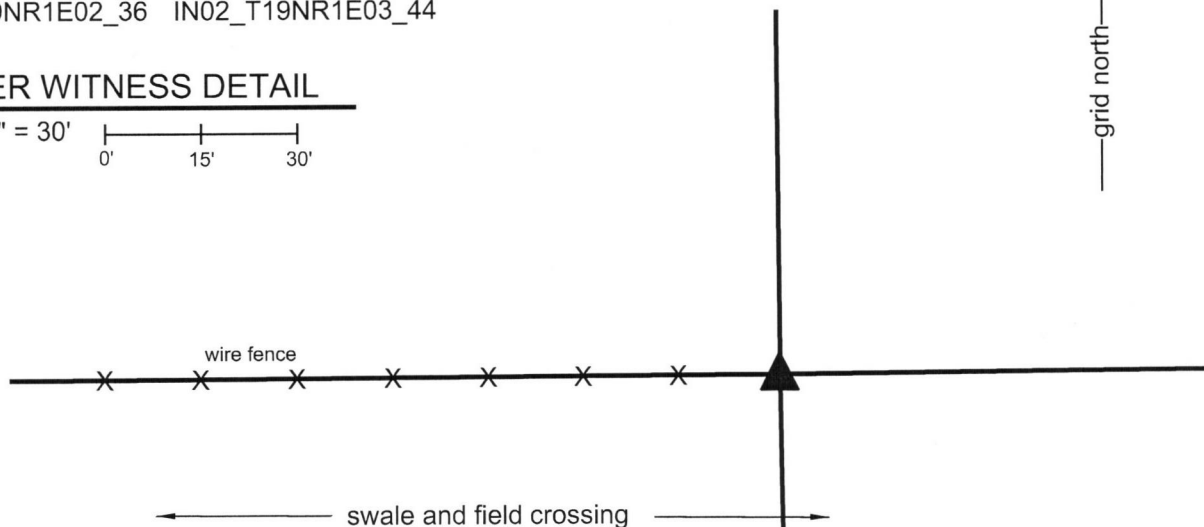
State Plane grid coordinates NAD83 (2011):
North: 1774882.78 East: 3145478.98 (U.S. survey feet)

Type of monument: Harrison, 4" disk 'Section Corner'
Depth: Three inches above ground, adjacent to post

Indiana tie card references:
IN02_T19NR1E02_36 IN02_T19NR1E03_44

CORNER WITNESS DETAIL

SCALE 1" = 30'
0' 15' 30'

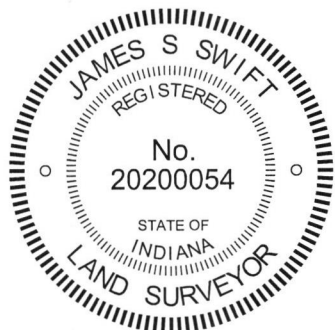


The Harrison monument was set in place of a stone found. No specific descriptions of this corner were found in the BCS Surveyor's Record beyond the original establishment of the corner as a wood post in 1822. No recent BCS tie cards were found referencing the corner, nor were descriptions of it found on surveys recorded in the Boone County Recorder's Office.

Excavation at this corner was performed on October 18, 2017. Prior to excavation, an ancient wood corner post was found with standing fence to the west and fencing cut-off to the north and south. The standing fence to the south begins approximately 60 feet south of the post, having evidently been removed near the post for purposes of installation of a swale and field crossing.

A stone was found at the south edge of the post, 6 inches below grade. No other stones were found around the post within 12 inches of the surface of the adjoining ground. The found stone was removed and measured to be 8 inches N-S by 7 inches E-W by 6 inches tall. No specific marks were observed on the stone. It is not possible to positively confirm if this stone was intentionally set as a corner marker, but it did appear in the field to be unique and purposefully set and did not appear to be acting as a brace rock. Further excavation revealed several rocks generally below the upper stone, the tops of which were 12 to 14 inches below grade. One of these rocks did appear to be acting as a brace for the post. The position of the post and stone fit well with the relative positions of proximate corners and the ancient evidence of occupation in the form of the fences and post were accepted as the best available evidence of the original location of the corner. The top stone was held as marking the corner and was replaced with a Harrison monument in the same position, adjacent to the southwest edge of the post. The lower rocks were left in place, partially embedded in concrete as part of the base of the monument.

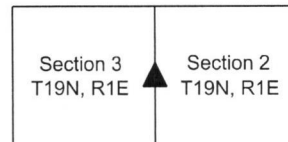
The Harrison monument is situated at the southwest edge of a standing post witnessed with an orange fiberglass lathe 'Survey Marker'. No other distance ties are provided. The standing portions of fence to the south and west are no longer stable and the associated line posts are loose and unstable, rendering them inappropriate for use as reference objects.



Kenneth E. Hedge
Kenneth E. Hedge, County Surveyor

James S. Swift
James S. Swift, IN LS 20200054
October 24, 2017

Clinton Township



SECTION CORNER RECORD

BOONE COUNTY SURVEYOR'S OFFICE

NE 550-500

State Plane grid coordinates NAD83 (CORS96):

North: 1774994.57 East: 3150663.97 (U.S. survey feet)

Type of monument: Harrison, 4" disk 'Section Corner'

Depth: One inch below adjacent road surface

Indiana tie card references:

IN02_T19NR1E02_44

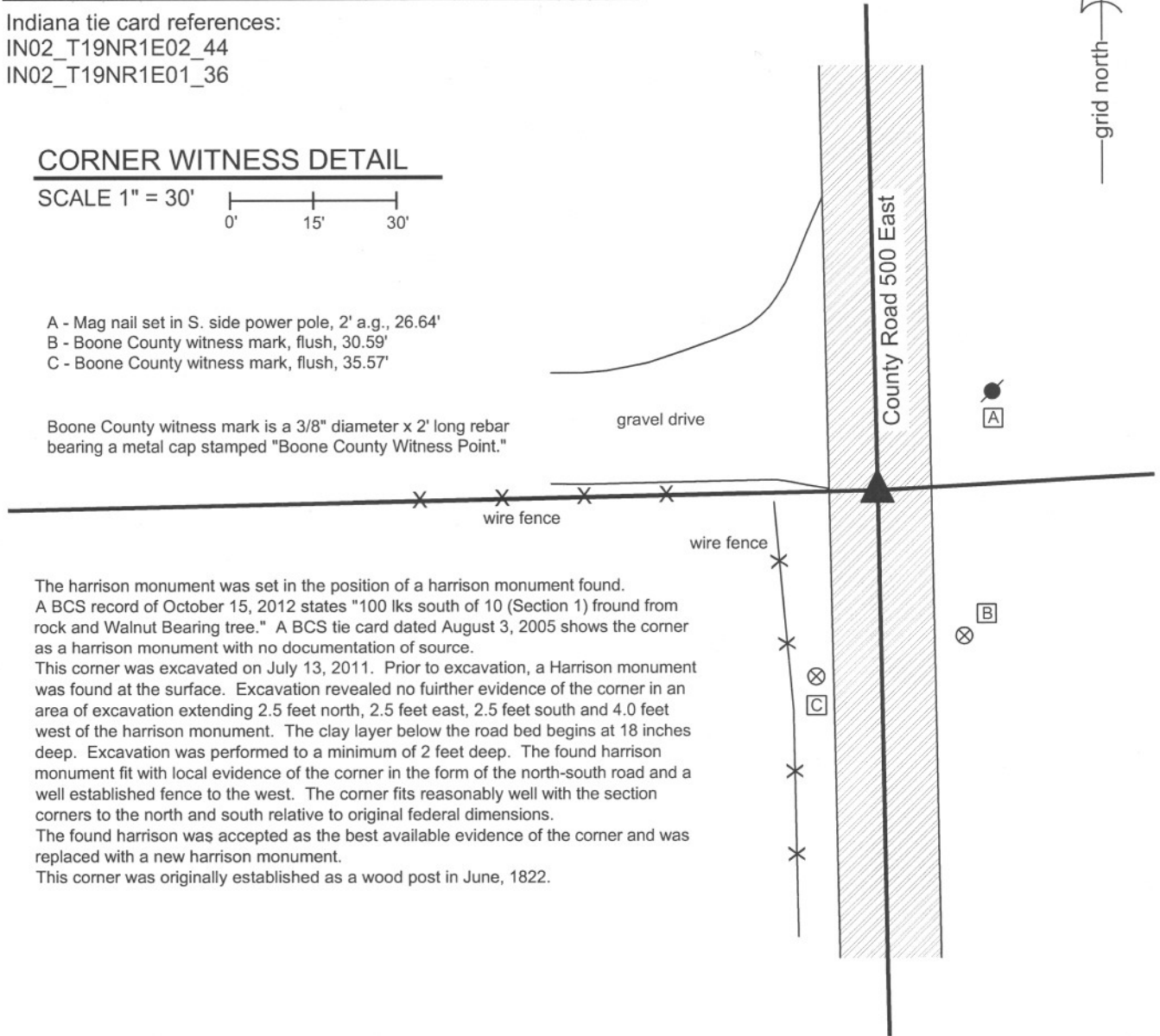
IN02_T19NR1E01_36

CORNER WITNESS DETAIL

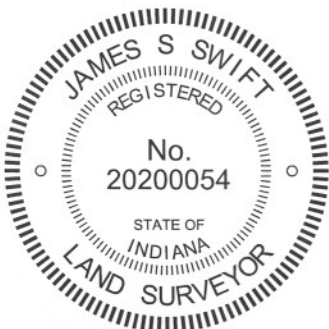
SCALE 1" = 30'

- A - Mag nail set in S. side power pole, 2' a.g., 26.64'
- B - Boone County witness mark, flush, 30.59'
- C - Boone County witness mark, flush, 35.57'

Boone County witness mark is a 3/8" diameter x 2' long rebar bearing a metal cap stamped "Boone County Witness Point."

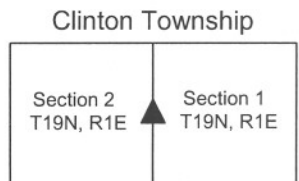


The harrison monument was set in the position of a harrison monument found. A BCS record of October 15, 2012 states "100 lks south of 10 (Section 1) found from rock and Walnut Bearing tree." A BCS tie card dated August 3, 2005 shows the corner as a harrison monument with no documentation of source. This corner was excavated on July 13, 2011. Prior to excavation, a Harrison monument was found at the surface. Excavation revealed no further evidence of the corner in an area of excavation extending 2.5 feet north, 2.5 feet east, 2.5 feet south and 4.0 feet west of the harrison monument. The clay layer below the road bed begins at 18 inches deep. Excavation was performed to a minimum of 2 feet deep. The found harrison monument fit with local evidence of the corner in the form of the north-south road and a well established fence to the west. The corner fits reasonably well with the section corners to the north and south relative to original federal dimensions. The found harrison was accepted as the best available evidence of the corner and was replaced with a new harrison monument. This corner was originally established as a wood post in June, 1822.



Kenneth E. Hedge
 Kenneth E. Hedge, County Surveyor

James S. Swift
 James S. Swift, IN LS 20200054
 March 1, 2012



SECTION CORNER RECORD

NE 600-400

BOONE COUNTY SURVEYOR'S OFFICE

State Plane grid coordinates NAD83 (2011):

Corner 1: North: 1777577.77 East: 3145401.96 (U.S. survey feet)

Corner 2: North: 1777578.71 East: 3145456.06 (U.S. survey feet)

Type of monument: INDOT type B, plug in monument box

Depth: Flush with adjacent road surface

Indiana tie card references:

IN02_T20NR1E34_80 IN02_T20NR1E35_72

IN02_T19NR1E03_08 IN02_T19NR1E02_00



CORNER WITNESS DETAIL

SCALE 1" = 50'

A - Boone County witness mark, flush,

38.5' to Corner 1, 85.7' to Corner 2

B - Mag nail set in N. side PWP, 2.8' a.g.

77.0' to Corner 1, 126.1' to Corner 2

C - Mag nail set in S. side PWP 2' a.g.

39.7' to Corner 1, 74.7' to Corner 2

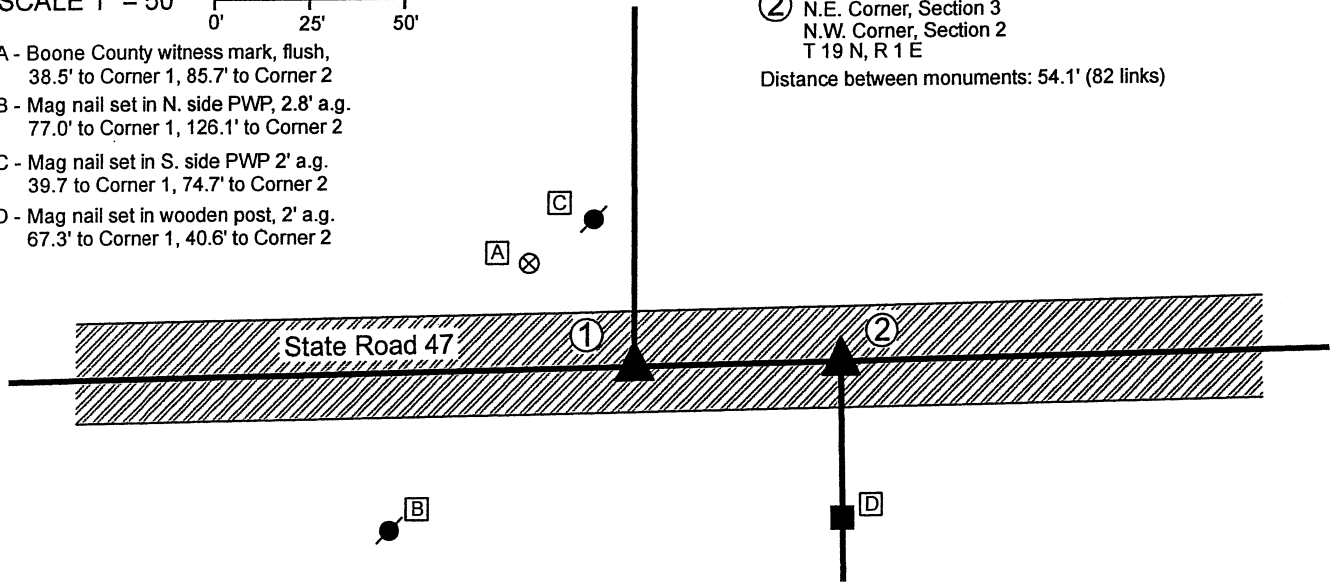
D - Mag nail set in wooden post, 2' a.g.

67.3' to Corner 1, 40.6' to Corner 2

① S.E. Corner, Section 34
S.W. Corner, Section 35
T 20 N, R 1 E

② N.E. Corner, Section 3
N.W. Corner, Section 2
T 19 N, R 1 E

Distance between monuments: 54.1' (82 links)



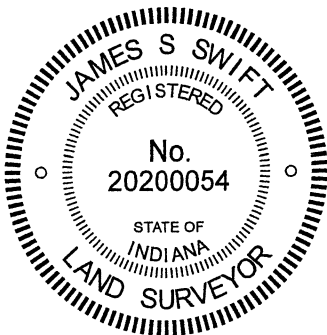
The INDOT Type B monuments were found in place and held as marking the respective corners.

A BCS record of November 6, 1871 states, with respect to Corner 1, "Reestablished from stumps of Elm and rotten roots of Hickory, Set Rock 17.12.12 +."

A BCS record of the same date states, with respect to Corner 2, "Reestablished 82 links East of corner, Sects. 35 & 36, which I found from stumps. Set a Rock 17.11.7 +."

A BCS tie card dated 2004 shows both corners as PK Nails with washers, at 54.12 feet (82 links) apart. Subsequent BCS tie cards, dated June 22, 2005 show both corners as Type "C" Monuments, in the same evident positions as shown on the 2004 tie cards. The monuments found, being INDOT Type B monuments, appear to be the same monuments in the same positions as shown on the 2005 tie cards. It is noted that these monument are located at 54.1 feet apart, matching the original federal closing distance of 82 links, which also matched the 1871 BCS records. No excavation was performed at these corners, as they fall in a state highway. The corners as held by this office in 2004-2006 are held hereon.

Corner 1 was originally established as a wood post in 1819. Corner 2 was originally established as a wood post in 1822.

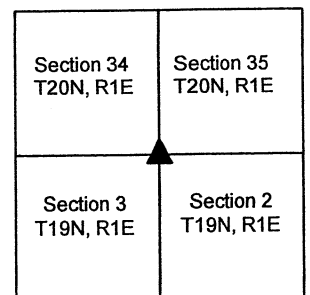


Kenneth E. Hedge, County Surveyor

James S. Swift, IN LS 20200054

February 17, 2021

Clinton Township



SECTION CORNER RECORD

NE 600-450

BOONE COUNTY SURVEYOR'S OFFICE

State Plane grid coordinates NAD83 (2011):

North: 1777624.56 East: 3148049.74 (U.S. survey feet)

North: 1777624.39 East: 3148037.28 (U.S. survey feet)

Type of monument: INDOT type B, plug in monument box

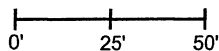
Depth: Flush with adjacent road surface

Indiana tie card references:

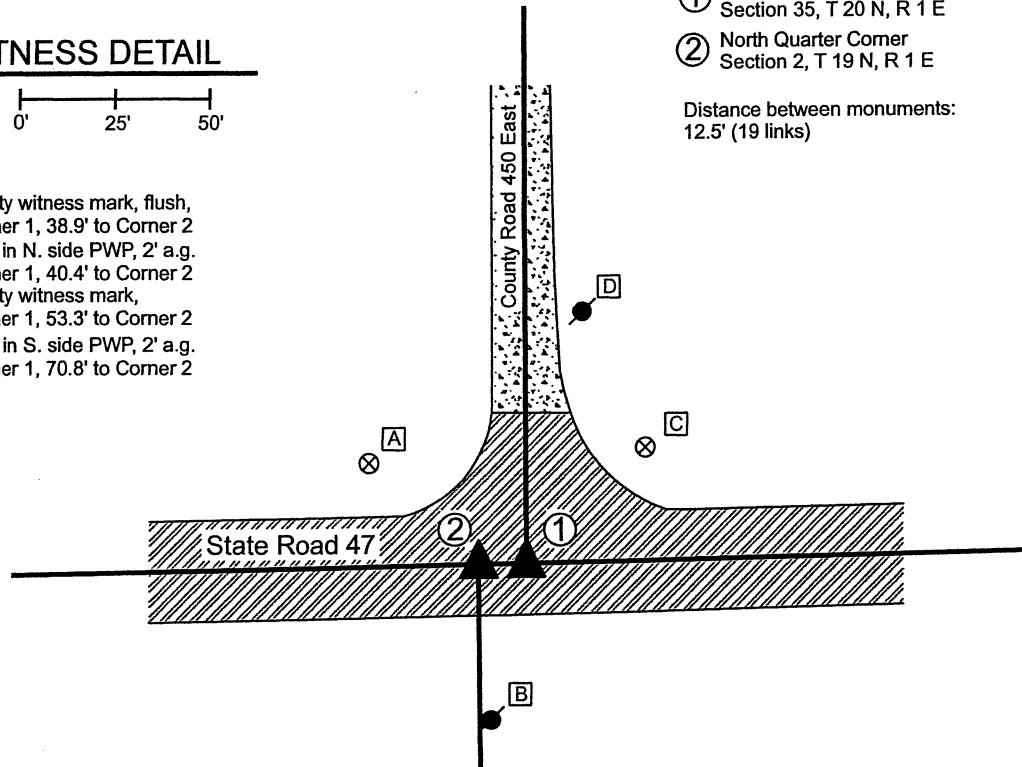
IN02_T20NR1E35_76 IN02_T19NR1E02_04

CORNER WITNESS DETAIL

SCALE 1" = 50'



- A - Boone County witness mark, flush, 48.7' to Corner 1, 38.9' to Corner 2
- B - Mag nail set in N. side PWP, 2' a.g. 41.5' to Corner 1, 40.4' to Corner 2
- C - Boone County witness mark, 43.5' to Corner 1, 53.3' to Corner 2
- D - Mag nail set in S. side PWP, 2' a.g. 66.9' to Corner 1, 70.8' to Corner 2



① South Quarter Corner
Section 35, T 20 N, R 1 E

② North Quarter Corner
Section 2, T 19 N, R 1 E

Distance between monuments:
12.5' (19 links)

The INDOT Type B monuments were found in place and held as marking the respective corners.

A BCS record of November 6, 1871 states, with respect to Corner 1, "Reestablished. Set two rocks. One 8.6.5 +. Top one 10.9.7 +." A BCS record of the

same date states, with respect to Corner 2, "Reestablished 19 links West of qtr sect corner for Sect 35. Set two rocks. One 8.7.6 +. Top one 11.9.5 +"

A BCS tie card dated 2004 shows both corners as PK Nails with washers, at 12.54 feet (19 links) apart. Subsequent BCS tie cards, dated June 22, 2005

show both corners as Type "C" Monuments, in the same evident positions as shown on the 2004 tie cards. The monuments found, being INDOT Type B

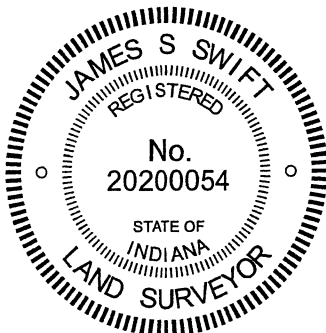
monuments, appear to be the same monuments in the same positions as shown on the 2005 tie cards. It is noted that these monument are located at

12.54 feet apart, matching the average of the original federal closing distance of at the northeast and northwest corners of Section 2, which also matches

the 1871 BCS records. No excavation was performed at these corners, as they fall in a state highway. The corners as held by this office in 2004-2006 are

held hereon.

Corner 1 was originally established as a wood post in 1819. Corner 2 is not an original federal corner.



Kenneth E. Hedge
Kenneth E. Hedge, County Surveyor

James S. Swift
James S. Swift, IN LS 20200054

February 17, 2021

Clinton
Township

Section 35
T20N, R1E

Section 2
T19N, R1E

SECTION CORNER RECORD

NE 600-500

BOONE COUNTY SURVEYOR'S OFFICE

State Plane grid coordinates NAD83 (2011):

Corner 1: North: 1777674.27 East: 3150689.51 (U.S. survey feet)

Corner 2: North: 1777672.82 East: 3150610.28 (U.S. survey feet)

Type of monument: INDOT Type B, plug in monument box

Depth: Flush with adjacent road surface

① S.E. Corner, Section 35
S.W. Corner, Section 36
T 20 N, R 1 E

② N.E. Corner, Section 2
N.W. Corner, Section 1
T 19 N, R 1 E

Distance between monuments: 79.2'
Original federal offset: 120 links (79.2')

Indiana tie card references:

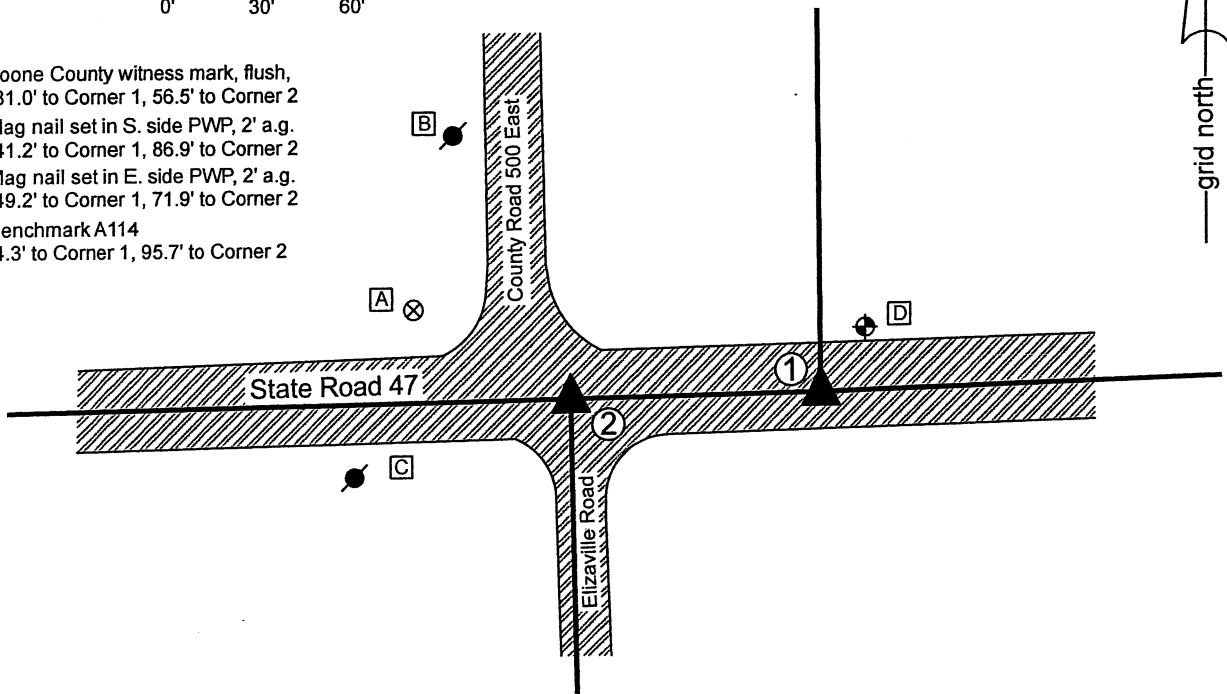
IN02_T20NR1E35_80 IN02_T20NR1E36_72

IN02_T19NR1E02_08 IN02_T19NR1E01_00

CORNER WITNESS DETAIL

SCALE 1" = 60'

- A - Boone County witness mark, flush, 131.0' to Corner 1, 56.5' to Corner 2
- B - Mag nail set in S. side PWP, 2' a.g. 141.2' to Corner 1, 86.9' to Corner 2
- C - Mag nail set in E. side PWP, 2' a.g. 149.2' to Corner 1, 71.9' to Corner 2
- D - Benchmark A114 24.3' to Corner 1, 95.7' to Corner 2

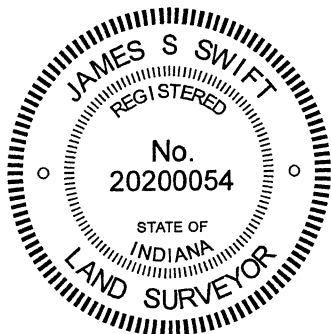


The INDOT Type B monuments were found in place and held as marking the respective corners.

A BCS record of November 6, 1871 states, with respect to Corner 1, "Found point from stump of Oak. Drove no stake." A BCS record of the same date states, with respect to Corner 2, "Reestablished 120 links West of corner, Sects. 35 & 36, set two rocks. One 10.6.6 +. Top one 16.8.8 +"

A BCS tie card dated 2004 shows both corners as PK Nails with washers, at 79.20 feet (120 links) apart. Subsequent BCS tie cards, dated June 22, 2005 show both corners as Type "C" Monuments, in the same evident positions as shown on the 2004 tie cards. The monuments found, being INDOT Type B monuments, appear to be the same monuments in the same positions as shown on the 2005 tie cards. It is noted that these monument are located at 79.2 feet apart, matching the original federal closing distance of 120 links, which also matched the 1871 BCS records. No excavation was performed at these corners, as they fall in a state highway. The corners as held by this office in 2004-2006 are held hereon.

Corner 1 was originally established as a wood post in 1819. Corner 2 was originally established as a wood post in 1822.



Kenneth E. Hedge, County Surveyor

James S. Swift, IN LS 20200054
February 17, 2021

Clinton Township

