

SECTION CORNER RECORD

BOONE COUNTY SURVEYOR'S OFFICE

NE 500-500

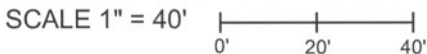
State Plane grid coordinates NAD83 (CORS96):
 North: 1772347.94 East: 3150712.09 (U.S. survey feet)

Type of monument: Harrison, 4" disk 'Section Corner'
 Depth: One inch below adjacent road surface

Indiana tie card references:
 IN02_T19NR1E02_80 IN02_T19NR1E01_72
 IN02_T19NR1E11_08 IN02_T19NR1E12_00



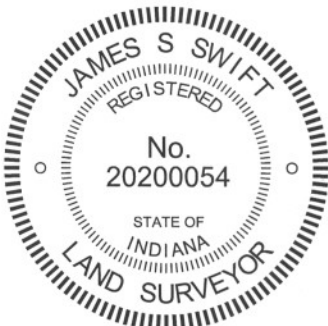
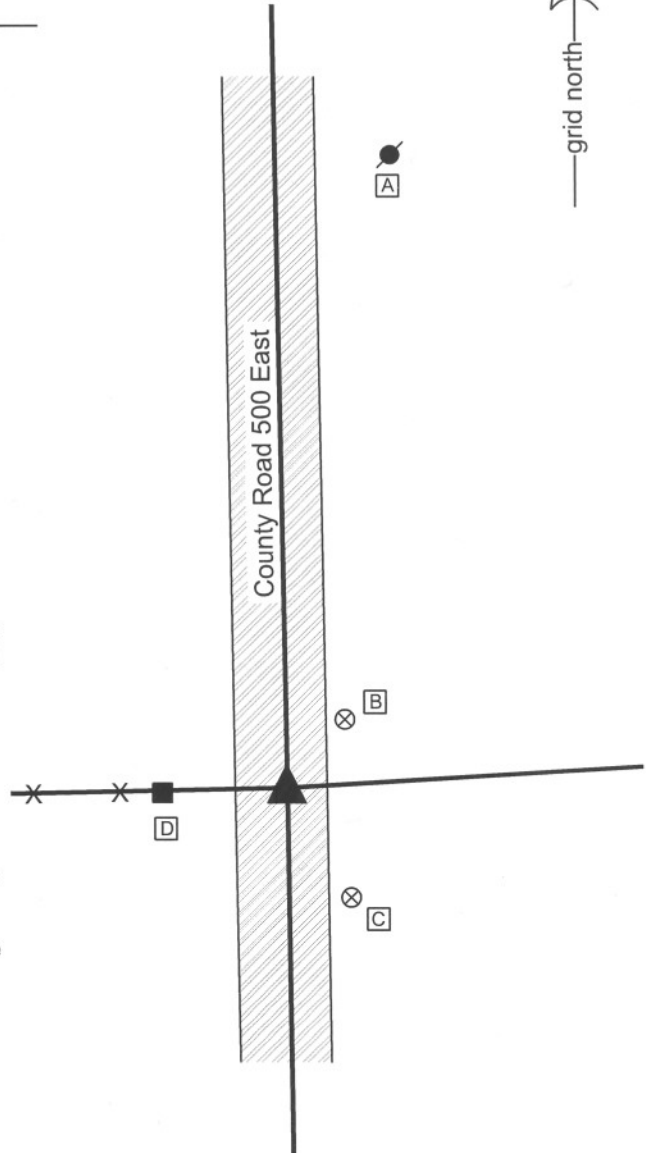
CORNER WITNESS DETAIL



- A - Mag nail set in S. side power pole, 2' a.g., 131.71'
- B - Boone County witness mark, flush, 18.57'
- C - Boone County witness mark, flush, 26.44'
- D - Mag nail set in E. side wood post, 2' a.g., 24.76'

Boone County witness mark is a 3/8" diameter x 2' long rebar bearing a metal cap stamped "Boone County Witness Point."

The harrison monument was set over a stone found.
 A BCS record of June 26-27 states "Think I found from where one tree stood but had been set out of its place by road hands about two days before. S.W. Wiley placed rock at the corner."
 A BCS tie card August 15, 1868 states "no stone." A BCS tie card dated May 30, 1991 shows the corner as a rail found. A BCS tie card dated August 3, 2005 shows the corner as a harrison monument with no documentation of source.
 This corner was excavated on July 13, 2011. Prior to excavation a harrison monument was visible at the surface. Excavation revealed a section of vertical railroad rail found at 7 inches deep, below the harrison monument. Further excavation revealed a stone found at 11 inches deep. With 8 inches of the top of the stone exposed, it measures 8 inches E-W by 11 inches N-S and is clearly larger than this at deeper points, particularly in the N-S dimension. The stone is embedded in the clay layer below the road, with the top of the stone protruding approximately 2 inches out of the clay into the bottom of the road bed. The stone was accepted as the best available evidence of the corner. The top 6 inches of the stone were encased in concrete and the harrison monument was set over the top, high point of the stone. The previously existing harrison and railroad rail, both removed during excavation, had been 0.4 feet south and 1.6 feet west of the stone. While the 1968 tie card does not specify monumentation set, it is most likely that the rail was set in association with the creation of that tie card. Clearly, the statement "no stone" was erroneous.
 This corner was originally established as a wood post in June, 1822.



Kenneth E. Hedge
 Kenneth E. Hedge, County Surveyor

James S. Swift
 James S. Swift, IN LS 20200054
 March 1, 2012

Clinton Township

Section 2 T19N, R1E	Section 1 T19N, R1E
Section 11 T19N, R1E	Section 12 T19N, R1E

PHOTOGRAPHIC DOCUMENTATION

Date of photography: July 13, 2011

View of the stone from above and north.



View of the stone from above and west.



View from the east, showing the top of the stone and the old post on the west side of the road.



View from the south, looking across the stone and north along County Road 500 East.



For details and documentation, refer to related sheet "Section Corner Record."

SECTION CORNER RECORD

NE 500-550

BOONE COUNTY SURVEYOR'S OFFICE

State Plane grid coordinates NAD83 (2011):
North: 1772491.31 East: 3153369.17 (U.S. survey feet)

Type of monument: Harrison, 4" disk 'Section Corner'
Depth: Two inches above adjacent ground

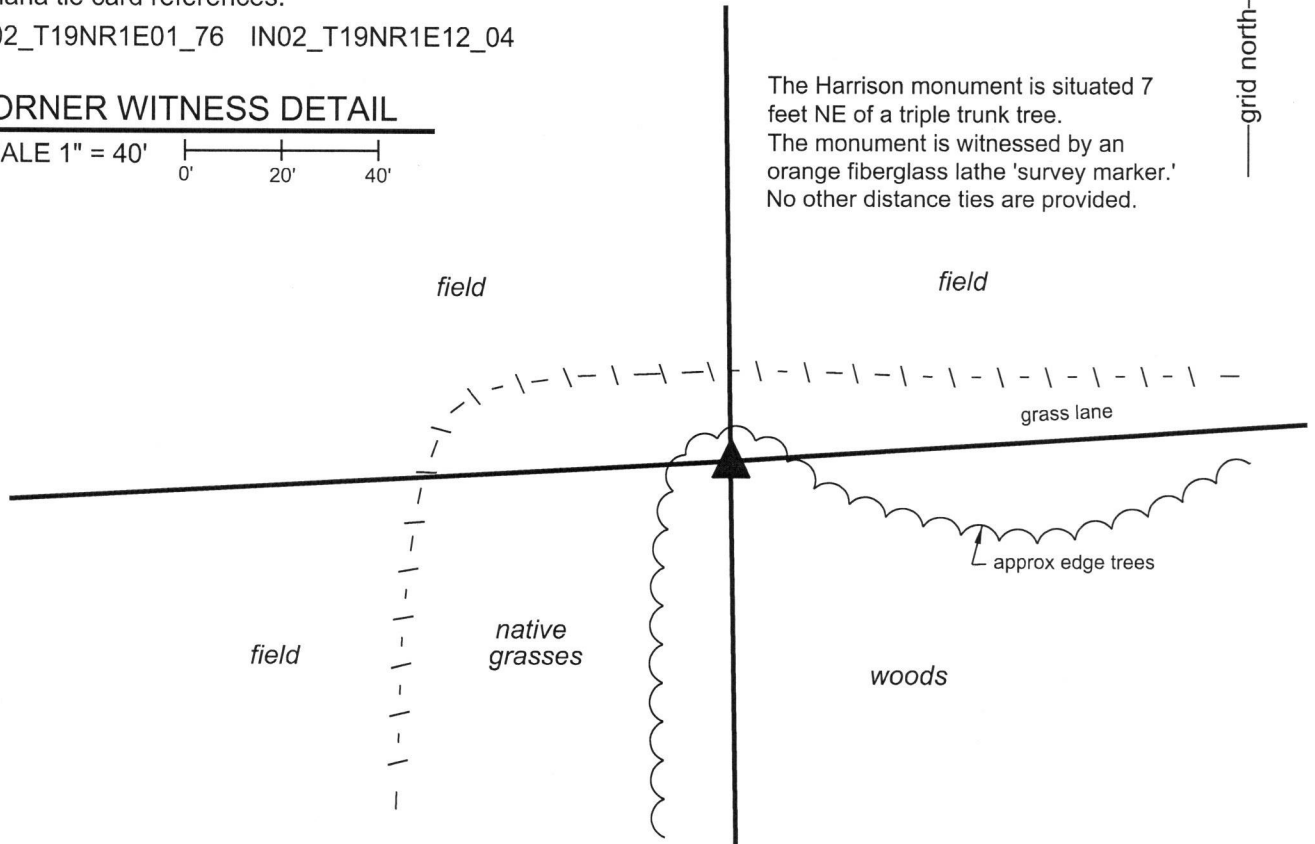
Indiana tie card references:
IN02_T19NR1E01_76 IN02_T19NR1E12_04

CORNER WITNESS DETAIL

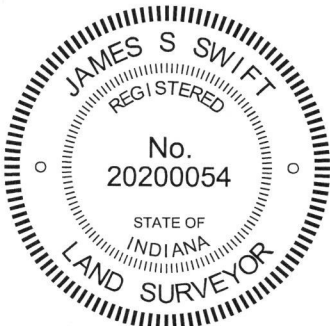
SCALE 1" = 40'
0' 20' 40'



The Harrison monument is situated 7 feet NE of a triple trunk tree.
The monument is witnessed by an orange fiberglass lathe 'survey marker.'
No other distance ties are provided.



The Harrison monument was set over a stone found.
A BCS record of September 2, 1878 states, with respect to this corner, "Reestablished from Elm (dead). Set a Rock 17.14.10+." A BCS tie card dated August 19, 2005 shows the corner as a Harrison monument with no documentation of source.
This corner was excavated on April 18, 2018. Prior to excavation, the Harrison monument called for in the 2005 record was found set directly in the dirt, apparently undisturbed. The monument was at the northerly prolongation of scraps of fence to the south and in line with evidence of old metal bracing material and apparent brace wire to the west. It appears that the monument was set in the approximate position the former corner post of fences to the south and west. Excavation in the immediate vicinity of the found Harrison revealed the stone called for in the 1878 record at 12 inches deep, southwest of the Harrison. With the top 6 inches of the stone exposed, it measured 10 inches N-S by 14 inches E-W. Probing indicated that the sides of the stone were generally vertical below that point. Probing along the north, east and west edges of the stone indicated that it is 17 inches tall, or close thereto, matching the record dimensions. A vague mark was detected at the top, high point of the stone, near the west edge of the rock. The stone was accepted as being the same monument called for in the 1878 record and was accepted as marking the corner. The Harrison monument set in 2005 was removed and a new Harrison monument was set directly over the top, high point of the stone. The top 6 inches of the stone were embedded in concrete and 1/2 inch diameter rebar were driven along the west edge of the stone to provide stability to the new monument. The new Harrison monument is 0.4 foot south and 0.7 foot east of the position of the previous Harrison, set in 2005.
This corner was originally established as a wood post in 1822.



Kenneth E. Hedge
Kenneth E. Hedge, County Surveyor

James S. Swift
James S. Swift, IN LS 20200054

April 24, 2018

Clinton Township

Section 1 T19N, R1E
▲
Section 12 T19N, R1E

SECTION CORNER RECORD

NE 500-600

BOONE COUNTY SURVEYOR'S OFFICE

State Plane grid coordinates NAD83 (NSRS 2007):

Corner 1: North: 1772662.46 East: 3156017.05 (U.S. survey feet)

Corner 2: North: 1772645.96 East: 3156017.26 (U.S. survey feet)

Corner 1:

Type of monument: Harrison, 4" disk 'Section Corner'

Depth: One inch below adjacent road surface

Corner 2:

Type of monument: Harrison, 4" disk 'Section Corner'

Depth: One inch below adjacent road surface

Indiana tie card references:

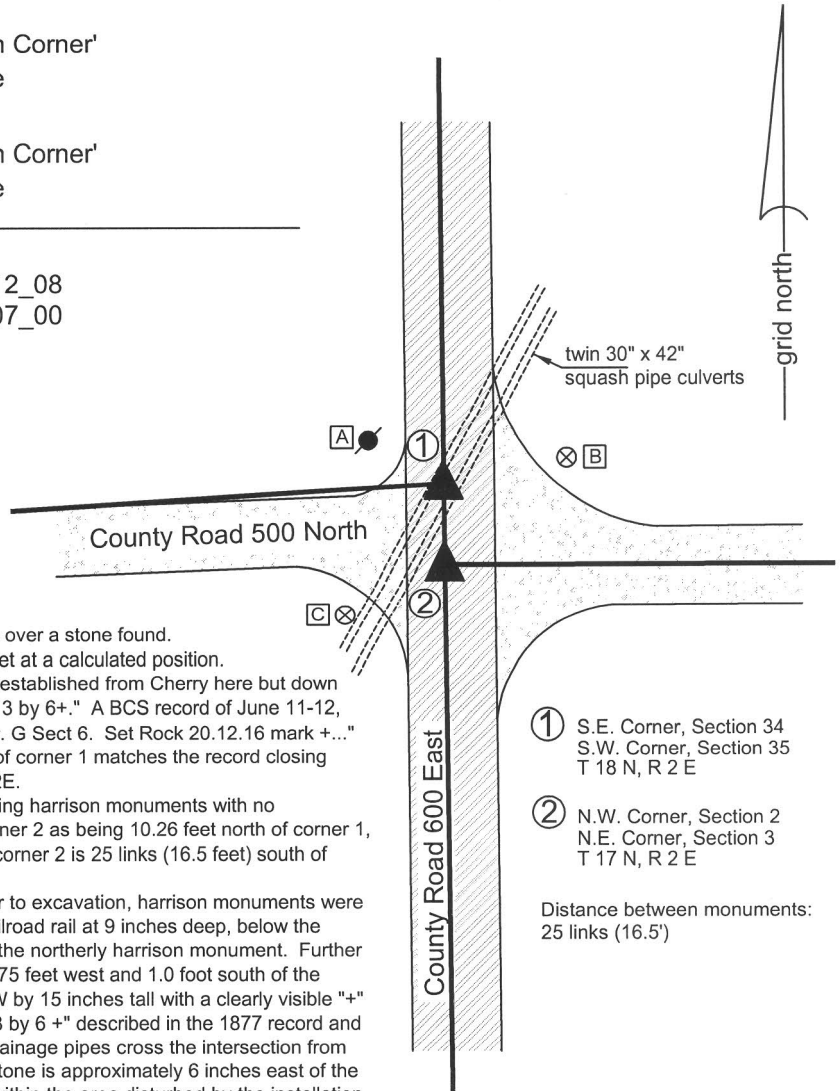
IN02_T19NR1E01_80 IN02_T19NR1E12_08

IN02_T19NR2E06_72 IN02_T19NR2E07_00

- A - Mag nail set in E. side power pole, 2' a.g.
16.52' to corner 1, 29.07' to corner 2.
- B - Boone County witness mark, flush,
26.07' to corner 1, 33.49' to corner 2.
- C - Boone County witness mark, flush,
33.06' to corner 1, 23.24' to corner 2.

CORNER WITNESS DETAIL

SCALE 1" = 40'



① S.E. Corner, Section 34
S.W. Corner, Section 35
T 18 N, R 2 E

② N.W. Corner, Section 2
N.E. Corner, Section 3
T 17 N, R 2 E

Distance between monuments:
25 links (16.5')

The harrison monument at the closing corner (corner 2) was set over a stone found.

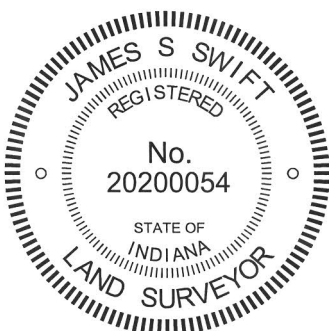
The harrison monument at the standard corner (corner 1) was set at a calculated position.

A BCS record of April 17, 1872, referring to corner 2, states "Reestablished from Cherry here but down by the roots, also found old stake at corner where set Rock 14.13 by 6+." A BCS record of June 11-12, 1877, referring to corner 1, states "Reestablished 25 lks North fr. G Sect 6. Set Rock 20.12.16 mark +..." It is noted that the referenced 25 link offset with corner 2 south of corner 1 matches the record closing distance documented in the original notes for Township 19N, R2E.

A BCS tie card dated August 3, 2005 shows both corners as being harrison monuments with no documentation of source. It is noted that the tie card shows corner 2 as being 10.26 feet north of corner 1, whereas the original notes and the 1877 record both state that corner 2 is 25 links (16.5 feet) south of corner 1.

This corner was excavated on May 28 and June 28, 2010. Prior to excavation, harrison monuments were found as shown on the 2005 tie card. Excavation revealed a railroad rail at 9 inches deep, below the southerly harrison monument. No monument was found below the northerly harrison monument. Further excavation revealed a stone found at 17 inches below grade, 2.75 feet west and 1.0 foot south of the southerly harrison. This stone is 6 inches N-S by 14 inches E-W by 15 inches tall with a clearly visible "+" etched on the top. The stone was accepted as being the "14.13 by 6 +" described in the 1877 record and was held as marking corner 2. A set of two corrugated metal drainage pipes cross the intersection from the southwest quadrant to the northeast quadrant. The found stone is approximately 6 inches east of the back-fill material associated with the pipes. Corner 1 falls well within the area disturbed by the installation of the pipes and no further evidence was found in the vicinity of corner 1. The specific position of corner 1 was established at 16.5 feet from corner 2, on the prolongation of the range line as determined by the positions of corner 2 and the standard quarter corner approximately one-half mile south.

Corner 1 was originally established as a wood post in 1819 and corner 2 was originally established as a wood post in July, 1821.



Kenneth E. Hedge
Kenneth E. Hedge, County Surveyor

James S. Swift
James S. Swift, IN LS 20200054
July 25, 2011

Clinton Twp	Marion Twp
Section 1 T19N, R1E	Section 6 T19N, R2E
Section 12 T19N, R1E	Section 7 T19N, R2E

PHOTOGRAPHIC DOCUMENTATION

Date of photography: June 28, 2010

Note: all pictures on this page show the closing corner (corner 2).

View of the stone as first exposed.



The stone washed to clearly show the etched mark on top.



View from above the stone, looking east along County Road 500 North.



View of the stone from above.



View of the stone from above and west.



For details and documentation, refer to related sheet "Section Corner Record."

SECTION CORNER RECORD

BOONE COUNTY SURVEYOR'S OFFICE

NE 550-500

State Plane grid coordinates NAD83 (CORS96):

North: 1774994.57 East: 3150663.97 (U.S. survey feet)

Type of monument: Harrison, 4" disk 'Section Corner'

Depth: One inch below adjacent road surface

Indiana tie card references:

IN02_T19NR1E02_44

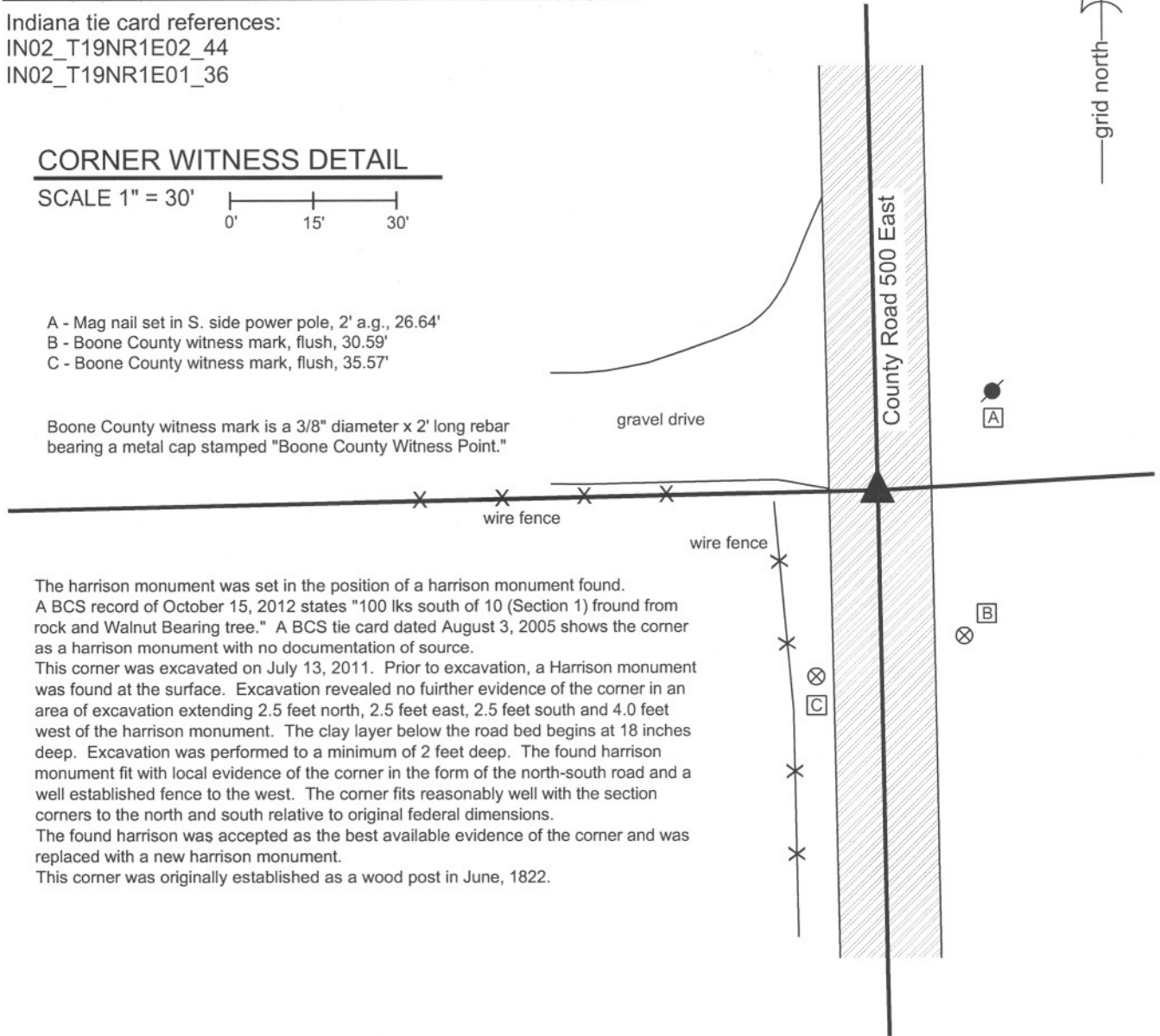
IN02_T19NR1E01_36

CORNER WITNESS DETAIL

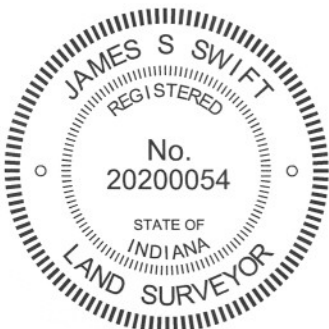
SCALE 1" = 30'

- A - Mag nail set in S. side power pole, 2' a.g., 26.64'
- B - Boone County witness mark, flush, 30.59'
- C - Boone County witness mark, flush, 35.57'

Boone County witness mark is a 3/8" diameter x 2' long rebar bearing a metal cap stamped "Boone County Witness Point."

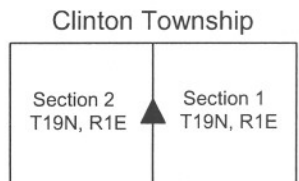


The harrison monument was set in the position of a harrison monument found. A BCS record of October 15, 2012 states "100 lks south of 10 (Section 1) found from rock and Walnut Bearing tree." A BCS tie card dated August 3, 2005 shows the corner as a harrison monument with no documentation of source. This corner was excavated on July 13, 2011. Prior to excavation, a Harrison monument was found at the surface. Excavation revealed no further evidence of the corner in an area of excavation extending 2.5 feet north, 2.5 feet east, 2.5 feet south and 4.0 feet west of the harrison monument. The clay layer below the road bed begins at 18 inches deep. Excavation was performed to a minimum of 2 feet deep. The found harrison monument fit with local evidence of the corner in the form of the north-south road and a well established fence to the west. The corner fits reasonably well with the section corners to the north and south relative to original federal dimensions. The found harrison was accepted as the best available evidence of the corner and was replaced with a new harrison monument. This corner was originally established as a wood post in June, 1822.



Kenneth E. Hedge
 Kenneth E. Hedge, County Surveyor

James S. Swift
 James S. Swift, IN LS 20200054
 March 1, 2012



SECTION CORNER RECORD

NE 550-600

BOONE COUNTY SURVEYOR'S OFFICE

State Plane grid coordinates NAD83 (NSRS 2007):

Corner 1: North: 1775289.77 East: 3155992.67 (U.S. survey feet)

Corner 2: North: 1775306.27 East: 3155992.51 (U.S. survey feet)

Type of monument: Harrison, 4" disk 'Section Corner'

Depth: One inch below adjacent road surface

Indiana tie card references:

IN02_T19NR1E01_44

IN02_T19NR2E06_36

① East quarter corner
Section 1
T 19 N, R 1 E

② West quarter corner
Section 6
T 19 N, R 2 E

CORNER WITNESS DETAIL

SCALE 1" = 30'

The harrison monument at corner 1 was set over a stone and the harrison monument at corner 2 was set in place of a stone.

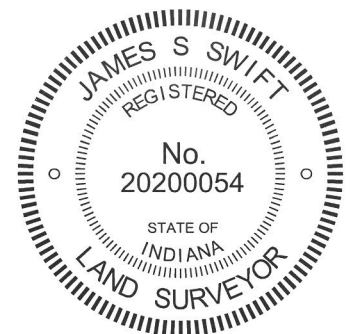
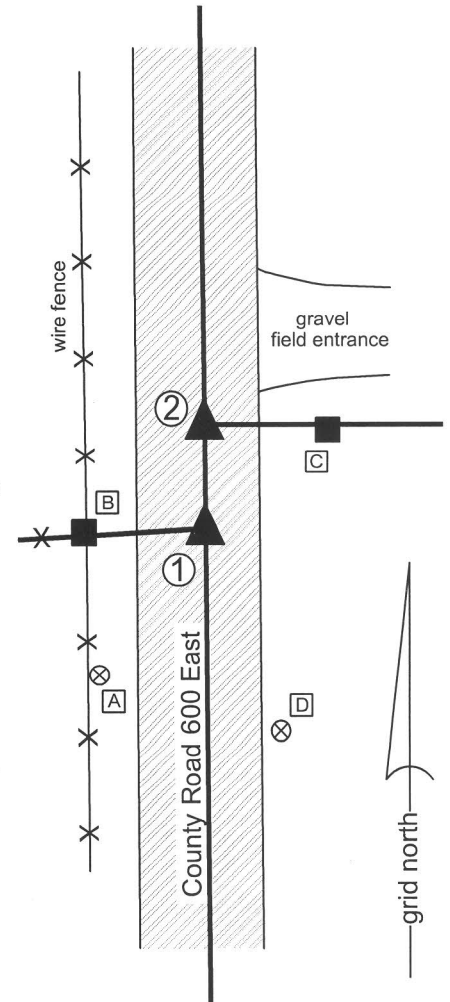
This corner is addressed in several references in the Boone County Surveyor's Record. Investigation of the record and excavation of physical evidences yields the conclusion that the monumented corners, as found, have been held as the corners since the late 1800s. The stone found at corner 1 was established in 1877 and the stone found at corner 2 was established in 1857. Current and historical patterns of occupation agree with the positions of the stones as found, with corner 2 being 25 links (16.5') north of corner 1. With respect to the original government survey, however, it would be expected that corner 1 would be 25 links north of corner 2. This fact was addressed by several surveys during the 1800s, but the stones as set in 1877 and 1857, respectively, have apparently been honored by patterns of occupation and the stones, as found, were held as marking the respective corners.

Corner 1 was established along the range line in 1819. Corner 2 was not established as part of the original federal survey, but, being the west quarter corner of section 6, should have been placed at the same closing distance and orientation as the record closing offset for the corners to the south. As part of a survey dated April 1-3, 1857, County Surveyor William Ensminger established corner 2, stating "Reestablished Set Rock 6 by 14 in." As part of a survey dated June 11-12, 1877, County Surveyor Thomas Huckstep established corner 1 stating "Reestablished 39.96 North of E and 38.44 South of C. Set Rock 15.9.6 marked +." Huckstep gives does not refer to the relative position of corner 2 in this record. As part of a survey dated November 20 and December 8, 1893, County Surveyor William Lane, with the aforementioned Huckstep as his deputy, references corner 2, stating "As established by Ensminger is 41 links too far North." The record does not show that a new monument was set. As part of a survey dated July 7, 1897, County Surveyor J. Ashley addresses the issue, stating with specific respect to corner 1 "Established 7 1/2 links North of old stone set for "D" in 1877 by Tm. Huckstep. Lap corner (H in Sec 6, 19N, R2E) was set 25 links S. of "D." Old stone, set for lap corner, by Mr. Ensminger (see Sec 6, 19N, R2E) is 42 1/2 links North of lap corner as herein established. Set oak stake at lap corner." Ashley's record does not mention setting a new monument at corner 1 ("D"). Using Ashley's numbers, it is computed that the two stones, as found by Ashley, were 25 links apart, with corner 1 south of corner 2. Ashley attempts to correct what he concluded were the erroneous positions of both corners. However, it appears that patterns of occupation were not changed and that the stones, as found by Ashley, continued to be held as the corners. Current occupation agrees with occupation visible on the 1939 aerial photo.

This corner was excavated on June 7, 2010. Prior to excavation, harrison monuments were found, both of which are shown on BCS tie cards dated October 27, 2005. This tie card shows corner 2 as being 16.44 feet north of corner 1, in general agreement with occupation. The tie card reveals no documentation about the source of the harrisons or the reason for the specific positions. Excavation of corner 1 revealed the record stone from 1877 slightly north of the harrison monument. The stone was found at 8 inches below grade, embedded in the clay layer below the road bed. The stone measures 6 inches N-S by 9 inches E-W and is 15 inches tall. Excavation of corner 2 revealed the record stone from 1857. The stone, as found was at 6 inches deep and leaning slightly to the north. The stone appears to have been hit and the top broken off. Pieces of the top were found in the vicinity. As found the stone measured 6 inches N-S by 12 inches E-W by 12 inches tall. Set back in a vertical orientation at the approximate position it may have been prior to being leaned, the top of the stone was only 2 inches below grade but was exactly 16.5 feet (25 links) north of the stone found at corner 1. Due to the shallow depth, the stone was removed.

Given the longevity of the patterns of occupation associated with the stones as set in 1857 and 1877 and the fact that the revised surveys of 1893 and 1897 appear not to have affected patterns of occupation, the stones as found were held as the corners. A harrison monument was set over the stone at corner 1 and a harrison monument was set in place of the stone at corner 2.

- A - Boone County witness mark, flush 28.26' to corner 1, 42.66' to corner 2
- B - Mag nail set in E. side post, 6 in. a.g. 18.67' to corner 1, 25.90' to corner 2
- C - Mag nail set in W. side post, 1' a.g. 24.88' to corner 1, 19.15' to corner 2
- D - Boone County witness mark, flush 33.62' to corner 1, 39.45' to corner 2



Clinton Twp Marion Twp

Section 1 T19N, R1E	Section 6 T19N, R2E
------------------------	------------------------

Kenneth E. Hedge
Kenneth E. Hedge, County Surveyor

James S. Swift
James S. Swift, IN LS 20200054

July 25, 2011, Revised March 7, 2013

PHOTOGRAPHIC DOCUMENTATION

Date of photography: June 7, 2010

View of the stone at the standard corner (corner 1) as first exposed.



View of the stone at the closing corner (corner 2) as first exposed.



View from the east, looking across the stone at corner 1 and along the fence to the west.



View from the north, looking across the stone at corner 2 and south along County Road 600 East. The stone is shown stood up in a vertical orientation in this picture. Corner 1, not yet excavated, is visible in the foreground.



For details and documentation, refer to related sheet "Section Corner Record."

SECTION CORNER RECORD

NE 600-500

BOONE COUNTY SURVEYOR'S OFFICE

State Plane grid coordinates NAD83 (2011):

Corner 1: North: 1777674.27 East: 3150689.51 (U.S. survey feet)

Corner 2: North: 1777672.82 East: 3150610.28 (U.S. survey feet)

Type of monument: INDOT Type B, plug in monument box

Depth: Flush with adjacent road surface

① S.E. Corner, Section 35
S.W. Corner, Section 36
T 20 N, R 1 E

② N.E. Corner, Section 2
N.W. Corner, Section 1
T 19 N, R 1 E

Distance between monuments: 79.2'
Original federal offset: 120 links (79.2')

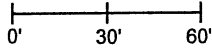
Indiana tie card references:

IN02_T20NR1E35_80 IN02_T20NR1E36_72

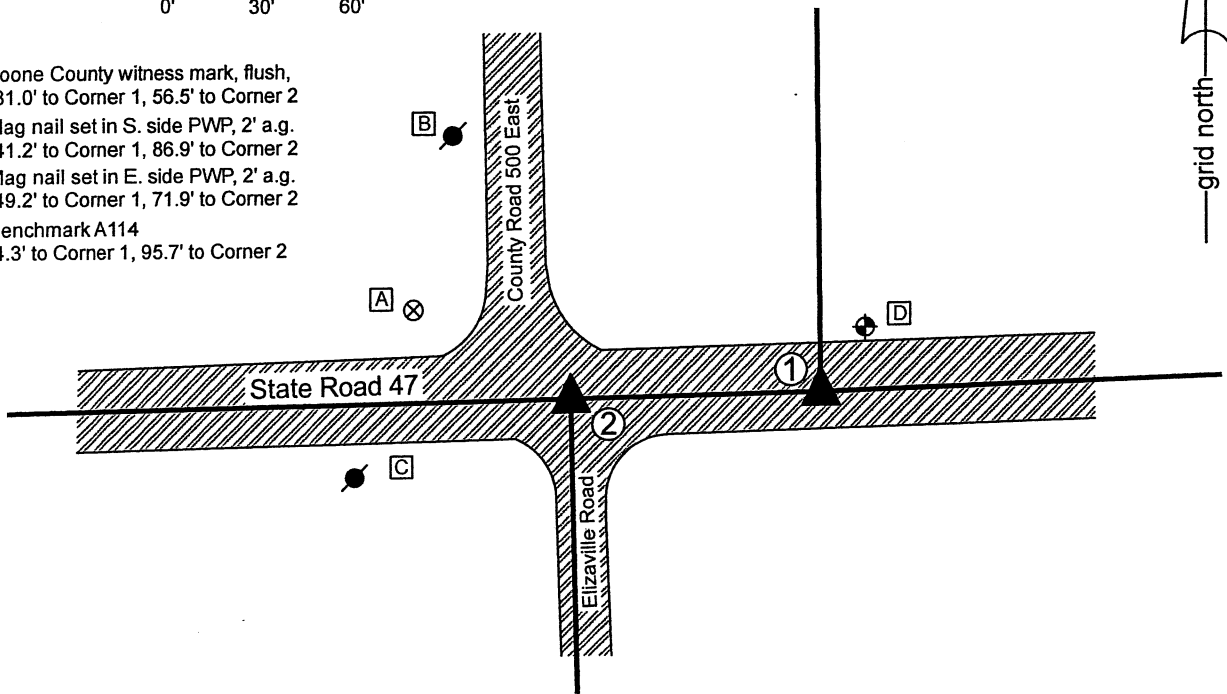
IN02_T19NR1E02_08 IN02_T19NR1E01_00

CORNER WITNESS DETAIL

SCALE 1" = 60'



- A - Boone County witness mark, flush, 131.0' to Corner 1, 56.5' to Corner 2
- B - Mag nail set in S. side PWP, 2' a.g. 141.2' to Corner 1, 86.9' to Corner 2
- C - Mag nail set in E. side PWP, 2' a.g. 149.2' to Corner 1, 71.9' to Corner 2
- D - Benchmark A114 24.3' to Corner 1, 95.7' to Corner 2

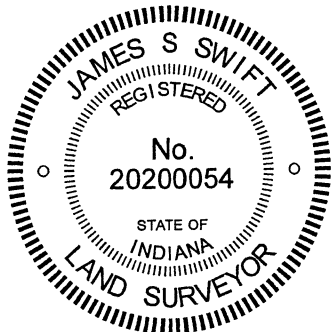


The INDOT Type B monuments were found in place and held as marking the respective corners.

A BCS record of November 6, 1871 states, with respect to Corner 1, "Found point from stump of Oak. Drove no stake." A BCS record of the same date states, with respect to Corner 2, "Reestablished 120 links West of corner, Sects. 35 & 36, set two rocks. One 10.6.6 +. Top one 16.8.8 +"

A BCS tie card dated 2004 shows both corners as PK Nails with washers, at 79.20 feet (120 links) apart. Subsequent BCS tie cards, dated June 22, 2005 show both corners as Type "C" Monuments, in the same evident positions as shown on the 2004 tie cards. The monuments found, being INDOT Type B monuments, appear to be the same monuments in the same positions as shown on the 2005 tie cards. It is noted that these monuments are located at 79.2 feet apart, matching the original federal closing distance of 120 links, which also matched the 1871 BCS records. No excavation was performed at these corners, as they fall in a state highway. The corners as held by this office in 2004-2006 are held hereon.

Corner 1 was originally established as a wood post in 1819. Corner 2 was originally established as a wood post in 1822.



Kenneth E. Hedge
Kenneth E. Hedge, County Surveyor

James S. Swift
James S. Swift, IN LS 20200054
February 17, 2021

Clinton Township

