

SECTION CORNER RECORD

NW 000-025

BOONE COUNTY SURVEYOR'S OFFICE

State Plane grid coordinates NAD83 (2011):

Corner 1: North: 1745577.64 East: 3123522.82 (U.S. survey feet)

Corner 2: North: 1745577.65 East: 3123524.14 (U.S. survey feet)

Corner 1: Harrison, 4" disk 'Section Corner', flush with road surface

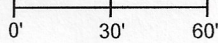
Corner 2: Harrison, 4" disk 'Section Corner', flush with road surface

Indiana tie card references:

IN02_T19NR1W36_78 IN02_T18NR1W01_06

CORNER WITNESS DETAIL

SCALE 1" = 60'



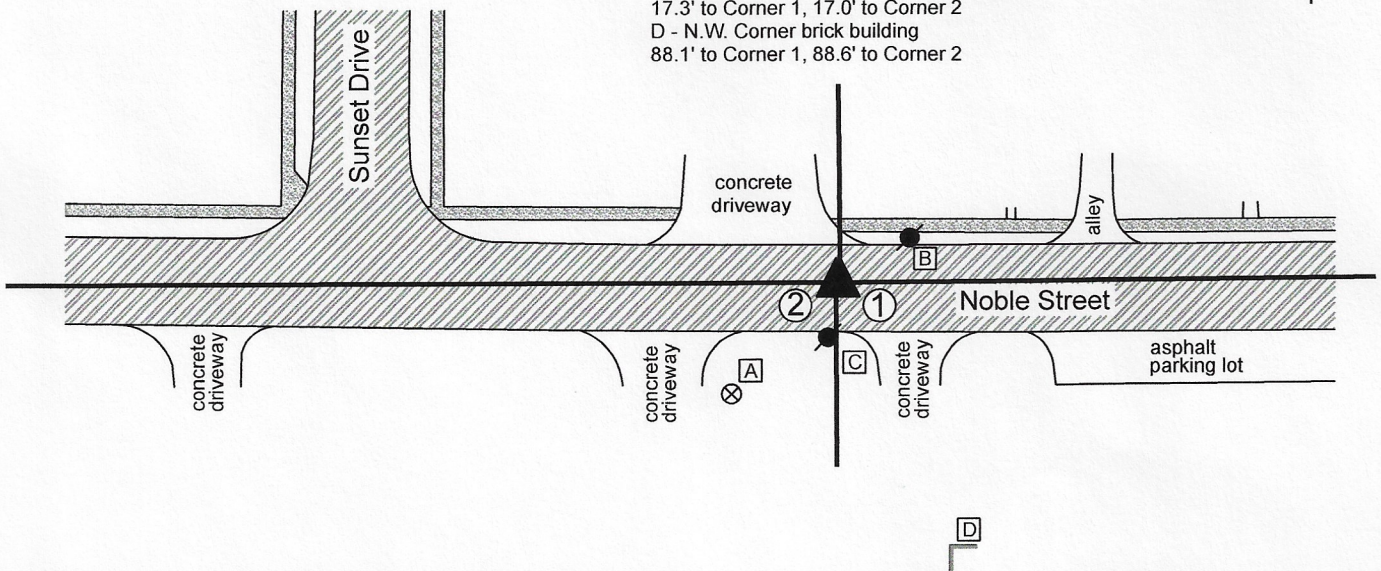
① S.W. Corner, S.E. 1/4, S.E. 1/4
Section 36
T 19 N, R 1 W

② N.W. Corner, N.E. 1/4, N.E. 1/4
Section 1
T 18 N, R 1 W

Distance between monuments:
2 links = 1.32 feet

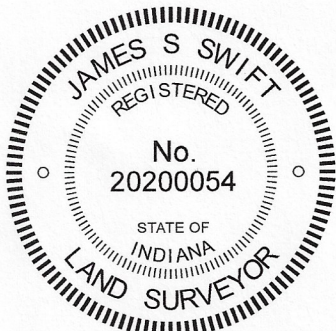


- A - Boone County witness mark, flush, 48.2' to Corner 1, 47.2' to Corner 2
- B - Mag nail set in S. side power pole, 2' a.g., 25.6' to Corner 1, 26.8' to Corner 2
- C - Mag nail set in N. side power pole, 2' a.g., 17.3' to Corner 1, 17.0' to Corner 2
- D - N.W. Corner brick building 88.1' to Corner 1, 88.6' to Corner 2



The Harrison monuments at both corners were set in place of mag nails set in the summer of 2018 by Donald R. Mosson, LS # 9600013, as referenced on a survey recorded as Instrument 2018009825, Survey Book 18, pages 67-68 in the Office of the Boone County Recorder. During his preliminary field work, Mr. Mosson discovered that holding an existing mag nail, flush with the surface of Noble Street, as the northwest corner of the northeast quarter of the northeast quarter of Section 1, T18N, R1W created significant uncertainties with respect to the lines of the parcel he was retracing in said quarter-quarter section. Mr. Mosson contacted the Boone County Surveyor's Office. He was provided the information we have (see below) in the BCS Surveyor's Record. He also obtained the plats of the Kenworthy and Sunset Park additions in section 36, T19N, R1W and proceeded with a significant effort to retrace the original positions of the two corners with respect to the information he had in both sections. Mr. Mosson was in regular dialogue with the Surveyor's Office throughout this process and it was noted that his research, field work and analysis were exhaustive and thorough. A planned effort to excavate for cornerstones was abandoned after it was observed that a sanitary sewer line in the immediate vicinity of the corners almost certainly removed any ancient evidence of the corners. Mr. Mosson established the corners at 2 links apart (1/4 of the original closing distance at the northwest corner of section 1) with respect to evidence in both sections, including monumentation, fences and curbs in section 36. His conclusions are accepted as having retraced the positions of the corners with respect to the best available evidence. Though his survey only calls out the northwest corner of the northeast quarter of the northeast quarter of section 1 (the corner upon which his survey was dependent), he also set a mag nail to mark the southwest corner of the southeast quarter of the southeast quarter of section 36. Both mag nails were removed and replaced with Harrison monuments in the same positions on July 22, 2020.

Neither corner is an original corner of the Public Land Survey System. Corner 2 is referenced in BCS records on May 21, 1866, June 5, 1902 and February 19, 1903. Corner 1 is not specifically referenced in the BCS Surveyor's Record but is shown on the aforementioned plats.



Kenneth E. Hedge
Kenneth E. Hedge, County Surveyor

James S. Swift
James S. Swift, IN LS 20200054

August 26, 2020

Center Township

Section 36
T19N, R1W

Section 1
T18N, R1W

SECTION CORNER RECORD

SW 000-025

BOONE COUNTY SURVEYOR'S OFFICE

State Plane grid coordinates NAD83 (2011):

Corner 1: North: 1745577.64 East: 3123522.82 (U.S. survey feet)

Corner 2: North: 1745577.65 East: 3123524.14 (U.S. survey feet)

Corner 1: Harrison, 4" disk 'Section Corner', flush with road surface

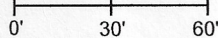
Corner 2: Harrison, 4" disk 'Section Corner', flush with road surface

Indiana tie card references:

IN02_T19NR1W36_78 IN02_T18NR1W01_06

CORNER WITNESS DETAIL

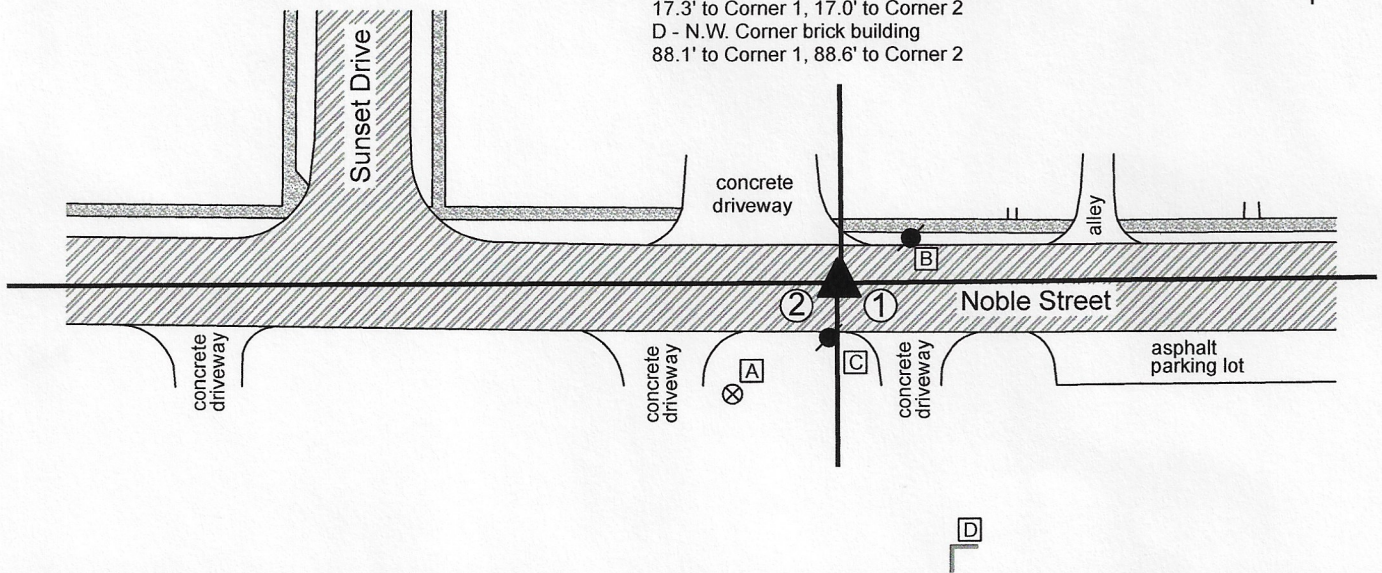
SCALE 1" = 60'



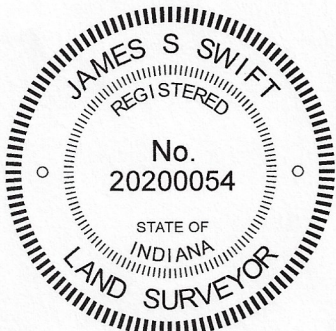
- ① S.W. Corner, S.E. 1/4, S.E. 1/4 Section 36 T 19 N, R 1 W
 - ② N.W. Corner, N.E. 1/4, N.E. 1/4 Section 1 T 18 N, R 1 W
- Distance between monuments:
2 links = 1.32 feet



- A - Boone County witness mark, flush, 48.2' to Corner 1, 47.2' to Corner 2
- B - Mag nail set in S. side power pole, 2' a.g., 25.6' to Corner 1, 26.8' to Corner 2
- C - Mag nail set in N. side power pole, 2' a.g., 17.3' to Corner 1, 17.0' to Corner 2
- D - N.W. Corner brick building 88.1' to Corner 1, 88.6' to Corner 2



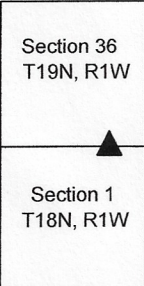
The Harrison monuments at both corners were set in place of mag nails set in the summer of 2018 by Donald R. Mosson, LS # 9600013, as referenced on a survey recorded as Instrument 2018009825, Survey Book 18, pages 67-68 in the Office of the Boone County Recorder. During his preliminary field work, Mr. Mosson discovered that holding an existing mag nail, flush with the surface of Noble Street, as the northwest corner of the northeast quarter of the northeast quarter of Section 1, T18N, R1W created significant uncertainties with respect to the lines of the parcel he was retracing in said quarter-quarter section. Mr. Mosson contacted the Boone County Surveyor's Office. He was provided the information we have (see below) in the BCS Surveyor's Record. He also obtained the plats of the Kenworthy and Sunset Park additions in section 36, T19N, R1W and proceeded with a significant effort to retrace the original positions of the two corners with respect to the information he had in both sections. Mr. Mosson was in regular dialogue with the Surveyor's Office throughout this process and it was noted that his research, field work and analysis were exhaustive and thorough. A planned effort to excavate for cornerstones was abandoned after it was observed that a sanitary sewer line in the immediate vicinity of the corners almost certainly removed any ancient evidence of the corners. Mr. Mosson established the corners at 2 links apart (1/4 of the original closing distance at the northwest corner of section 1) with respect to evidence in both sections, including monumentation, fences and curbs in section 36. His conclusions are accepted as having retraced the positions of the corners with respect to the best available evidence. Though his survey only calls out the northwest corner of the northeast quarter of the northeast quarter of section 1 (the corner upon which his survey was dependent), he also set a mag nail to mark the southwest corner of the southeast quarter of the southeast quarter of section 36. Both mag nails were removed and replaced with Harrison monuments in the same positions on July 22, 2020. Neither corner is an original corner of the Public Land Survey System. Corner 2 is referenced in BCS records on May 21, 1866, June 5, 1902 and February 19, 1903. Corner 1 is not specifically referenced in the BCS Surveyor's Record but is shown on the aforementioned plats.



Kenneth E. Hedge
 Kenneth E. Hedge, County Surveyor

James S. Swift
 James S. Swift, IN LS 20200054
 August 26, 2020

Center Township



SECTION CORNER RECORD

SW 050-000

BOONE COUNTY SURVEYOR'S OFFICE

Corner 1 only:

State Plane grid coordinates NAD83 (2011):

North: 1742935.05 East: 3124855.10 (U.S. survey feet)

Type of monument: Harrison, 4" disk 'Section Corner'

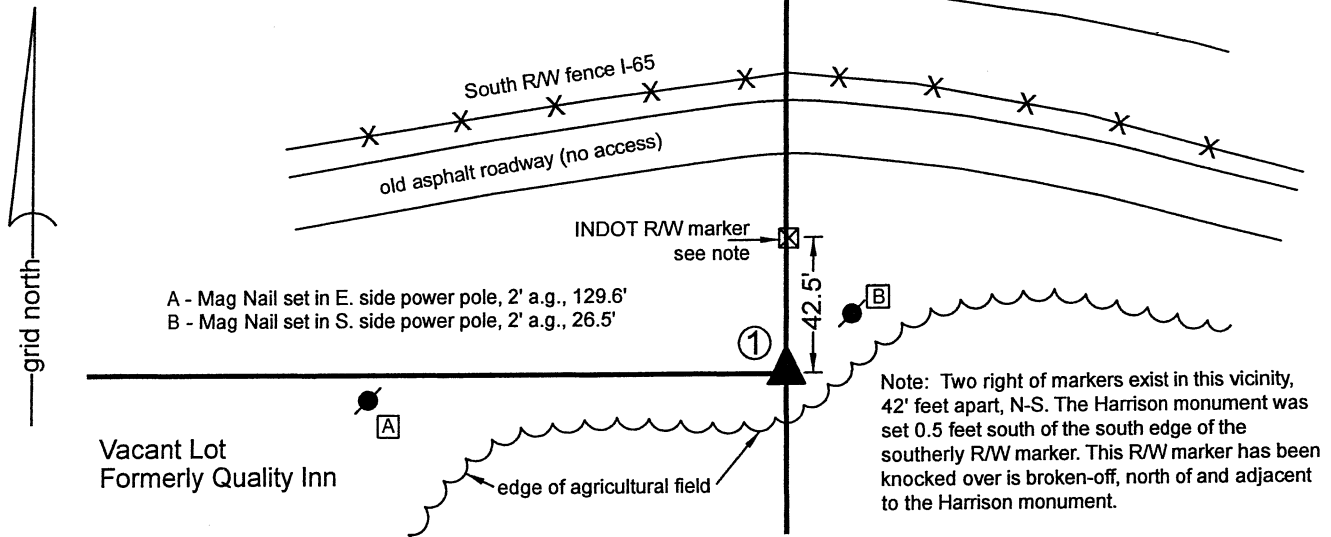
Depth: Two inches above adjacent ground

Indiana tie card references:

IN02_T18NR1W01_44 IN02_T18NR1E06_36

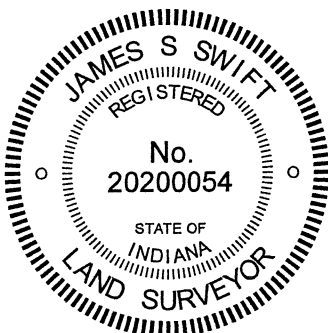
CORNER WITNESS DETAIL

SCALE 1" = 60'



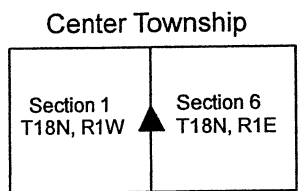
- ① East Quarter corner
Section 1
T 18 N, R 1 W
Harrison Monument set
- ② West Quarter corner
Section 6
T 18 N, R 1 E
Final position not determined.
Corner should be established on
Meridian Line 3.04 chains (200.64 feet)
northerly of Corner 1

The Harrison monument marking Corner 1 was set in place of fragments of a wood corner post found. A BCS record of uncertain date, possibly February, 1903, pertaining to Corner 1 states, "Established rock 15x15x10 +. Walnut Stake beneath. Thence North 3.04 [chains] set H Sec. 6, 18, 1E being a rock 8,11, 6 +. Two eye brick beneath." The corner referenced as H Sec. 6 is Corner 2 as shown hereon. A BCS tie card dated April 28, 1992 shows Corner 1 as "Fence post @ fence intersection and accepted." Several surveys performed by the firm Woolpert preliminary to the Lebanon Business Park show Corner 1 as a wood post found and state in the associated report that the post was found per the previous BCS tie card and that an INDOT right-of-way marker was found on the north face of the post. The 1957 plans for Interstate 65, sheet 14 of 64, current INDOT reference of R-04293, do not specifically show these corners, but do show the Meridian Line and show a fence to the west, with a jog in the right-of-way at what appears to be the position of Corner 1. This corner was originally excavated and monumented in April, 2012. No documentation was produced at that time. The findings in 2012 were as follows: The position of the corner shown on the Woolpert survey was computed with respect to other monuments shown on the survey. Two right-of-way markers were found 42 feet apart. The southerly of the two fit closely with the computed position of the corner. The wood post called in the 1992 tie card and Woolpert survey was found lying on the ground, evidently extracted from the ground. A portion of the bottom of the post appeared to be missing. Excavation at the south edge of the southerly right-of-way marker revealed a piece of wood matching the size and shape of the piece of post which appeared to be missing from the main body of the post. The position of this piece of wood was used to determine the precise position of the wood post prior to removal. The reconstructed position of the post was held as the position of the corner and a Harrison monument was set in this position of April 26, 2012. Corner 2 falls on the edge of the southbound lane of I-65. The precise position of the corner will be computed after the township corner to the north is established. The corner should be established on the Meridian Line at 3.04 chains (200.64 feet) northerly of Corner 1. This offset matches the original federal offset at the southwest corner of Section 6 and also matches the call in the aforementioned 1903 entry in the BCS Surveyor's Record. Corner 1 was established as a wood post in 1819. Corner 2 is not an original federal corner.



Kenneth E. Hedge
Kenneth E. Hedge, County Surveyor

James S. Swift
James S. Swift, IN LS 20200054
February 17, 2020



SECTION CORNER RECORD

SW 100-000

BOONE COUNTY SURVEYOR'S OFFICE

State Plane grid coordinates NAD83 (CORS96):

Corner 1: North: 1740288.14 East: 3124864.58 (U.S. survey feet)

Corner 2: North: 1740489.40 East: 3124863.85 (U.S. survey feet)

Type of monument:

Corner 1: Harrison, 4" disk 'Section Corner' (3 inches above adjacent ground)


Corner 2: 36" length, 5/8 inch rebar with metal cap stamped 'Boone County Surveyor' (flush)

Indiana tie card references:

IN02_T18NR1W01_80 IN02_T18NR1E06_72

IN02_T18NR1W12_08 IN02_T18NR1W07_00

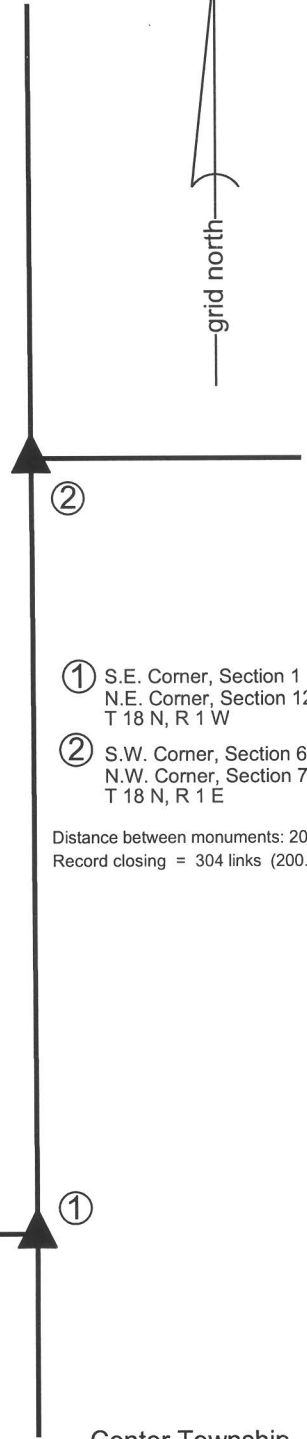
CORNER WITNESS DETAIL

SCALE 1" = 50' 

The corners fall in an area of tilled ground where no reliable witness marks are available.

The harrison monument at corner 1 was set in place of a rebar bearing a plastic cap stamped "Weihe Engr 0012." The rebar at corner 2 was set on the range line at a distance of 201.26 feet north of corner 1, which position is also at the east edge of the former position of an old wood corner post. A survey by Woolpert recorded in Survey Book 2, pages 12-13, in the Boone County Recorder's Office shows corner 2 as being monumented by a stone and shows no monument found at corner 1. The survey states that the distance between the two corners was computed based on an index factor of 1.0031 used to adjust the original closing distance of 304 links (200.64 feet). In the spring of 2012 the capped rebar was found ostensibly marking corner 1 and various evidence was found in the vicinity of corner 2, including the base of an old wood corner post and several rocks. None of the rocks were positively identifiable as a section corner stone. It was not clear which stone may have been held for the Woolpert survey and it appeared that some disturbance may have taken place since that survey was performed in 1995. It was observed that by holding the rebar as corner 1 and placing corner 2 on the range line (defined by corner 1 and the standard corner 1/2 mile north) at the indexed distance of 201.26 feet reported on the Woolpert survey, corner 2 would fall at the east edge of the found remains of the old corner post. These positions both fit well with the Woolpert survey relative to other corners shown on that survey.

In the fall of 2012 the fence line and tree line marking the lines to the north and east of corner 2 were removed by the current farmer for agricultural purposes. The various rocks and post at or near corner 2 were removed and a steel post was set in the position of the old wood corner post. After this work was completed, the two corners were monumented by Boone County Surveyor's Office. At corner 1 the rebar was removed and replaced with a harrison monument in the same position. At corner 2 a 36 inch length of 5/8 inch diameter rebar was set and capped with a metal cap stamped 'Boone County Surveyor.' This monument is 0.7 foot east of the steel post which was set in the position of the old wood corner post.



②

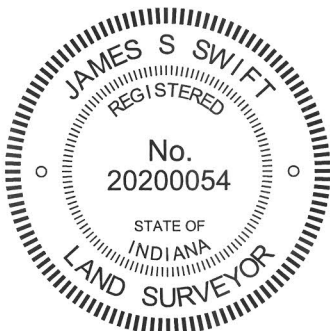
① S.E. Corner, Section 1
N.E. Corner, Section 12
T 18 N, R 1 W

② S.W. Corner, Section 6
N.W. Corner, Section 7
T 18 N, R 1 E

Distance between monuments: 201.26'
Record closing = 304 links (200.64')

①

Center Township



Kenneth E. Hedge
Kenneth E. Hedge, County Surveyor

James S. Swift
James S. Swift, IN LS 20200054
April 9, 2013

Section 1 T18N, R1W	Section 6 T18N, R1E
Section 12 T18N, R1W	Section 7 T18N, R1E

SECTION CORNER RECORD

SW 100-050

BOONE COUNTY SURVEYOR'S OFFICE

State Plane grid coordinates NAD83 (2011):

North: 1740231.36 East: 3122258.08 (U.S. survey feet)

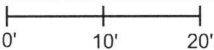
Type of monument: Harrison, 4" disk 'Section Corner'

Depth: Five inches above adjacent ground

Indiana tie card references:

IN02_T18NR1W01_76 IN02_T18NR1W12_04

CORNER WITNESS DETAIL

SCALE 1" = 20' 

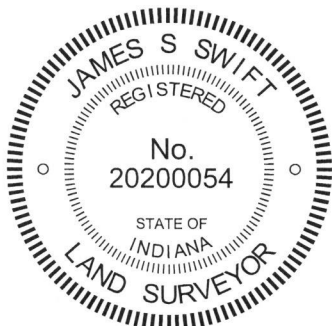
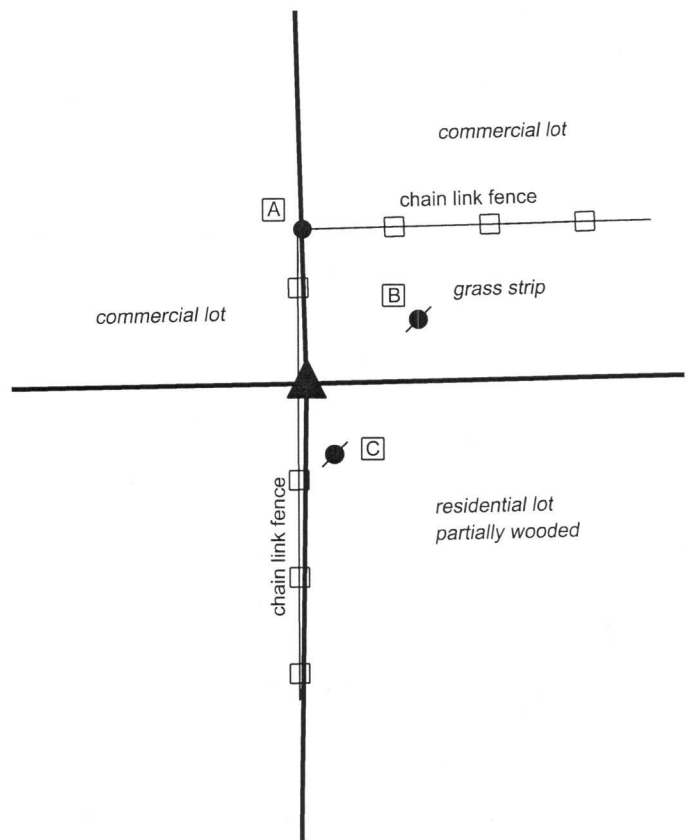
- A - South edge, chain link corner post, flush, 16.0'
- B - Mag nail set in S.W. side power pole, 1' a.g., 12.6'
- C - Mag nail set in N.W. side power pole, 2' a.g., 7.1'




The Harrison monument was set over the remains of a wood corner post.

A BCS record of August 27, 1886 states, with respect to this corner, "Reestablished from Bl Oak stump roots yet there S 35 W, 16 links dist, and in digging about 14 inches underground found point of an old stake. Set Rock 16x14x12 + top." A BCS tie card dated February 26, 1992 shows the corner as and old fence post in line with fence to the east and slightly east of a N-S chain link fence. The tie card states "no stone found." This wood post has been held as marking the corner for many surveys.

This corner was excavated on May 24, 2018. Prior to excavation, the wood post shown on the 1992 tie card was found standing, though not in good condition. The post falls slightly east of a chain link fence enclosing an industrial property to the west and is in line with a tree line to the east. The post yet had a brace post to the east and fencing cut-off toward the east. Excavation around the base of the post revealed various rubble and junk, including numerous pieces of glass, found at depths of up to 18 inches below grade, indicating substantial previous disruption of the area. The stone called for in the 1886 record was not found, nor was any other evidence of the corner beyond the post. Excavation around the base of the post revealed that it is a 6 inch by 6 inch locust post. The post was accepted as representing the best available evidence of the corner and was held as marking the corner. The top of the post was broken off from the base at approximately 6 inches below grade and the base of the post was left in place. The top portion of the remaining base of the post was encased in concrete and a Harrison monument was set over the remains of the post. This corner was originally established as a wood post in 1820.




Kenneth E. Hedge, County Surveyor


James S. Swift, IN LS 20200054
May 30, 2018

Center Township

Section 1
T18N, R1W



Section 12
T18N, R1W

SECTION CORNER RECORD

SW 100-100

BOONE COUNTY SURVEYOR'S OFFICE

State Plane grid coordinates NAD83 (NSRS 2007):

North: 1740184.01 East: 3119513.14 (U.S. survey feet)

Type of monument: Harrison, 4" disk 'Section Corner'

Depth: One inch above adjacent ground

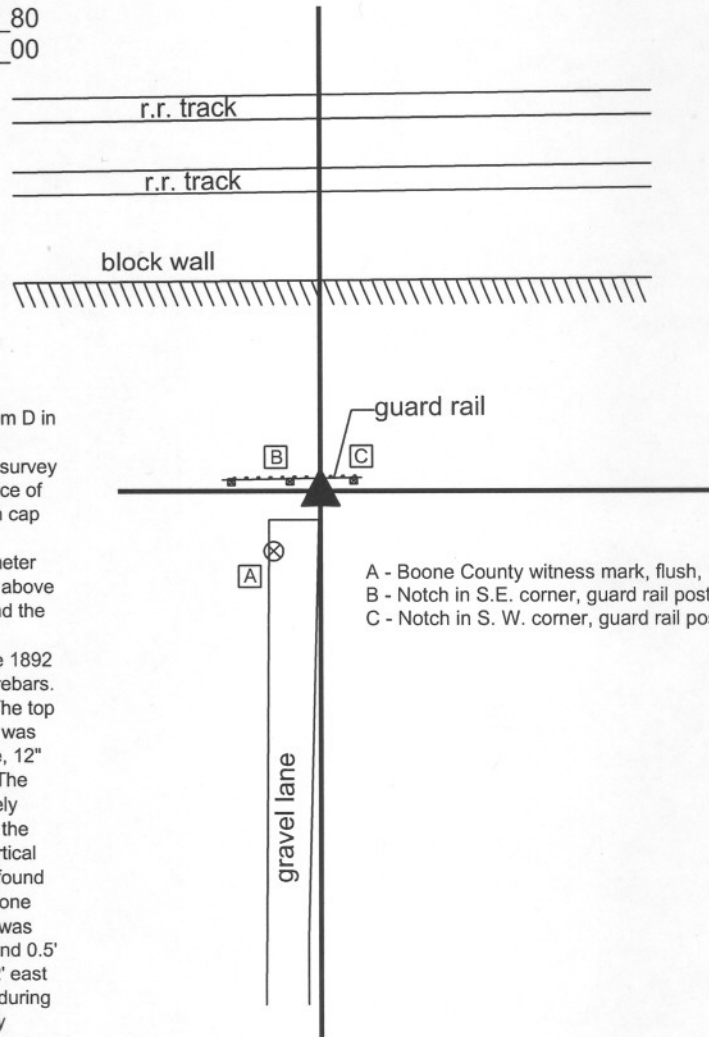
Indiana tie card references:

IN02_T18NR1W01_72 IN02_T18NR1W02_80

IN02_T18NR1W11_08 IN02_T18NR1W12_00

CORNER WITNESS DETAIL

SCALE 1" = 40'



A BCS record dated January 18, 1892 states "Reestablished by running intersecting lines at a pt 25 links East of a straight line from D in this Section to D in Section 11. Set Rock + 22.17.12 at corner."

Preliminary surveys for the Lebanon Business Park, including a survey by Woolpert, Inc. recorded in Survey Book 2, page 14 in the Office of the Boone County Recorder, show the corner as an iron pin with cap found.

Investigation and excavation of this corner yielded two 5/8" diameter rebars and the record stone found. The two rebars were visible above the surface prior to excavation. One bore the cap "Woolpert" and the other bore a cap, the markings on which were not identifiable.

Excavation on August 4, 2010 yielded the stone described in the 1892 record found adjacent to and slightly south and west of the two rebars. The stone was found at 9 inches below the top of the ground. The top of the stone appears to have been chipped off and the "+" mark was not found. The stone measures 21" tall on the vertical west side, 12" E-W at the widest point and 19 inches N-S at the widest point. The stone is approximately triangular in shape and difficult to precisely measure. Given the similarity of the measured dimensions with the record dimensions and the characteristics of the stone being vertical with a distinct high point, fitting with the characteristics of other found stones which were set by County Surveyors in the 1800s, the stone was accepted as being the record stone described in 1892 and was held as marking the corner. The Woolpert rebar was 0.2' east and 0.5' north of the top high point of the stone. The other rebar was 0.2' east and 0.2' north of the top high point. Both rebars were removed during excavation. The harrison monument was set in concrete directly above the top high point of the stone, with the top 5 inches of the stone encased in concrete.

This corner was originally established as a wood post in 1820.

- A - Boone County witness mark, flush, 15.9'
- B - Notch in S.E. corner, guard rail post, 6.3'
- C - Notch in S.W. corner, guard rail post, 6.7'



Kenneth E. Hedge
Kenneth E. Hedge, County Surveyor

James S. Swift
James S. Swift, IN LS 20200054
September 22, 2011

Center Township

Section 2 T18N, R1W	Section 1 T18N, R1W
Section 11 T18N, R1W	Section 12 T18N, R1W

PHOTOGRAPHIC DOCUMENTATION

Date of photography: August 4, 2010

The stone and two rebars. View from the east.



The stone and two rebars. View from the south.



For details and documentation, refer to related sheet "Section Corner Record."