

# SECTION CORNER RECORD

SE 500-500

## BOONE COUNTY SURVEYOR'S OFFICE

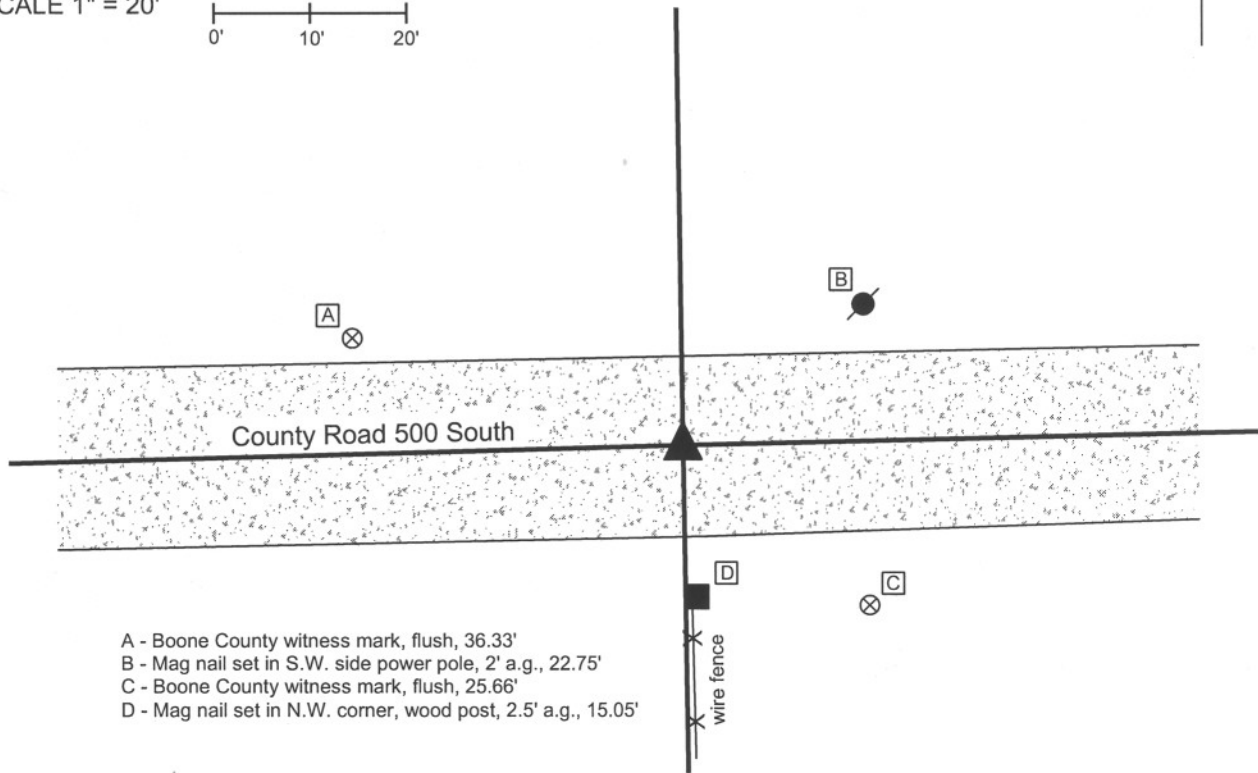
State Plane grid coordinates NAD83 (NSRS 2007):  
North: 1719749.71 East: 3151359.26 (U.S. survey feet)

Type of monument: Harrison, 4" disk 'Section Corner'  
Depth: Four inches below adjacent gravel road surface

Indiana tie card references:  
IN02\_T18NR1E25\_72      IN02\_T18NR1E26\_80  
IN02\_T18NR1E35\_08      IN02\_T18NR1E36\_00

### CORNER WITNESS DETAIL

SCALE 1" = 20'



- A - Boone County witness mark, flush, 36.33'
- B - Mag nail set in S.W. side power pole, 2' a.g., 22.75'
- C - Boone County witness mark, flush, 25.66'
- D - Mag nail set in N.W. corner, wood post, 2.5' a.g., 15.05'

The harrison monument was set in place of a railroad rail found.  
 A BCS record of 12/26/1861 states "found from stump of tree." A BCS record of 7/23/1868 states "re-established. Set a rock, 18,14,7 marked + on top." BCS tie cards dated June 10, 1991 and November 3, 2005 call for a railroad rail. No source record for the railroad rail was found.  
 Prior to excavation the railroad rail was situated 6 inches below grade in the approximate center of County Road 500 South, north and slightly west of the end post of a well established fence to the south. An area seven feet E-W by seven feet N-S, centered on the rail, was excavated into the clay (approximately 24 inches deep) on March 31, 2008. Neither the record stone nor any other monument was found. The rail was replaced with a harrison monument set in concrete.  
 This corner was originally established as a wood post in June 1820.



*Kenneth E. Hedge*  
Kenneth E. Hedge, County Surveyor

Perry Township

*James S. Swift*  
James S. Swift, IN LS 20200054

Worth Township

March 11, 2009

Section 26 T18N, R1E	Section 25 T18N, R1E
Section 35 T18N, R1E	Section 36 T18N, R1E

# SECTION CORNER RECORD

## BOONE COUNTY SURVEYOR'S OFFICE

SE 500-550

State Plane grid coordinates NAD83 (NSRS 2007):  
 North: 1719807.08 East: 3154043.38 (U.S. survey feet)

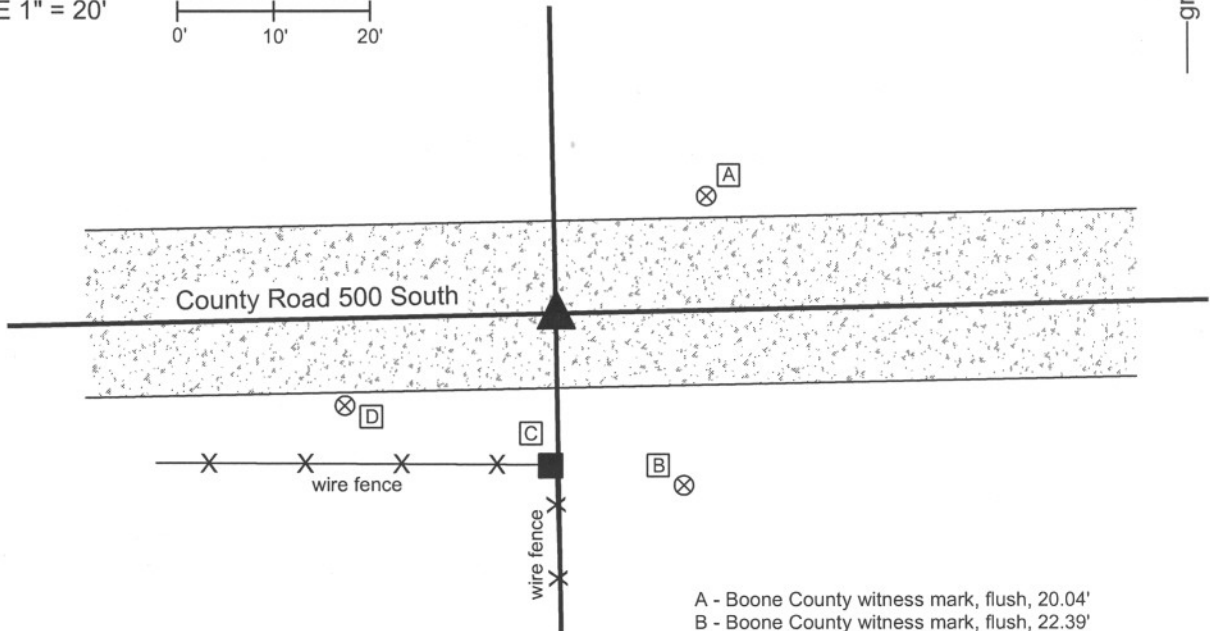
Type of monument: Harrison, 4" disk 'Section Corner'  
 Depth: Four inches below adjacent gravel road surface

Indiana tie card references:  
 IN02\_T18NR1E25\_76  
 IN02\_T18NR1E36\_04



### CORNER WITNESS DETAIL

SCALE 1" = 20'



- A - Boone County witness mark, flush, 20.04'
- B - Boone County witness mark, flush, 22.39'
- C - Mag nail set in N. side wood post, 2' a.g., 15.76'
- D - Boone County witness mark, flush, 24.08'

Boone County witness mark is a 3/8" diameter x 2' long rebar bearing a metal cap stamped "Boone County Witness Point."

The harrison monument was set in place of a railroad rail found.  
 A BCS tie card dated December 14, 2005 calls for a railroad rail. No other BCS records for this corner were found beyond the original establishment of the corner by federal surveyors. The rail was present prior to 2005 and the source of the rail is not known.  
 An area six feet E-W by six feet N-S, centered on the rail, was excavated to the clay (approximately 18 inches deep) on April 1, 2008. The rail was removed and no other monuments were found. The rail was replaced with a harrison monument set in concrete.  
 This corner was originally established as a wood post in June 1820.



*Kenneth E. Hedge*  
 Kenneth E. Hedge, County Surveyor

*James S. Swift*  
 James S. Swift, IN LS 20200054

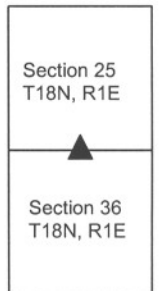
March 11, 2009

Worth Township

Section 25  
 T18N, R1E

Perry Township

Section 36  
 T18N, R1E



# SECTION CORNER RECORD

SE 500-600

## BOONE COUNTY SURVEYOR'S OFFICE

State Plane grid coordinates NAD83 (NSRS 2007):

Corner 1: North: 1719861.18 East: 3156725.03 (U.S. survey feet)

Corner 2: North: 1719937.06 East: 3156723.07 (U.S. survey feet)

### CORNER WITNESS DETAIL

SCALE 1" = 60'



Corner 1

Type of monument: Harrison, 4" disk 'Section Corner'

Depth: Three inches above adjacent ground.

Corner 2

Type of monument: 5/8 inch rebar with metal cap stamped "Boone County Surveyor"

Depth: Flush with adjacent ground.

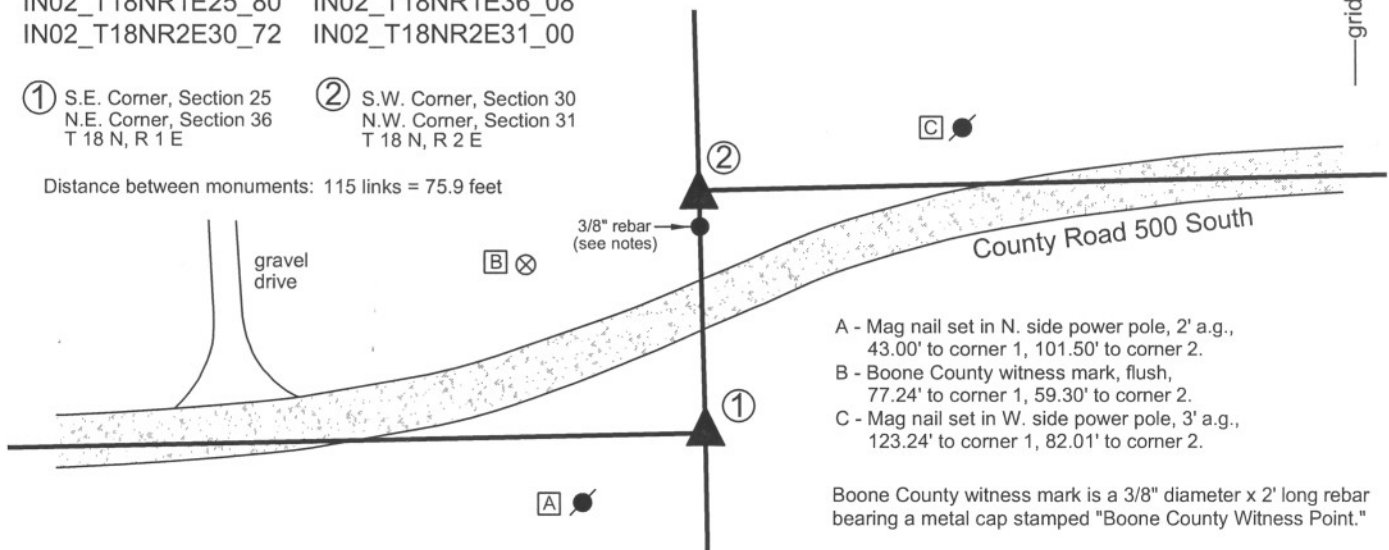
Indiana tie card references:

IN02\_T18NR1E25\_80 IN02\_T18NR1E36\_08

IN02\_T18NR2E30\_72 IN02\_T18NR2E31\_00

- ① S.E. Corner, Section 25  
N.E. Corner, Section 36  
T 18 N, R 1 E
- ② S.W. Corner, Section 30  
N.W. Corner, Section 31  
T 18 N, R 2 E

Distance between monuments: 115 links = 75.9 feet



- A - Mag nail set in N. side power pole, 2' a.g., 43.00' to corner 1, 101.50' to corner 2.
- B - Boone County witness mark, flush, 77.24' to corner 1, 59.30' to corner 2.
- C - Mag nail set in W. side power pole, 3' a.g., 123.24' to corner 1, 82.01' to corner 2.

Boone County witness mark is a 3/8" diameter x 2' long rebar bearing a metal cap stamped "Boone County Witness Point."

The harrison monument at corner 1 was set in place of a harrison monument found. The rebar at corner 2 was set on the range line at the record government closing distance from corner 1.

A BCS record dated August 30, 1869 states with respect to corner 1 "Found from stumps both trees. Drove no stake." A BCS record dated May 17, 1912 states with respect to corner 2 "Reestablished. Set rock. Good sized marked +." A BCS tie card dated November 28, 2005 shows the corner as a harrison monument with no documentation of source, though the harrison monument is in substantially the same position as a rebar shown on private surveys including a survey by American Consulting, Inc. recorded in Survey Book 8, page 15-16 in the Boone County Recorder's Office.

Corner 1 falls in an area which has clearly been disturbed and no evidence of the corner was found beyond the existing harrison monument. It is noted that the position of the harrison monument and the rebar which previously existed at the corner, fit very well with the extension of the existing roadway to the west and with the relative positions of the quarter corner 1/2 mile west and a railroad rail at the generally accepted quarter-quarter corner 1/4 mile west. The existing harrison was held as the corner and a new harrison monument was set in a more stable manner. Corner 2 falls near the toe of slope of an area of substantial fill for the adjacent roadway. A 3/8 inch rebar was found near the corner, but the small rebar fits with neither the original government closing distance, nor with the evidence of the section line in the form of the extended roadway to the east. Probing and limited excavation in the vicinity of the corner produced several small to medium sized rocks, none of which specifically appeared to be a section corner stone. No other evidence of this corner was found. Corner 2 was established on the range line at the record government closing distance of 115 links. This position fits well with the existing roadway to the east. A 5/8 inch diameter rebar, 3 feet long, was set at the corner, marked with an aluminum cap stamped 'Boone County Surveyor.' The 3/8 inch rebar is located 11.3 feet south of corner 2.

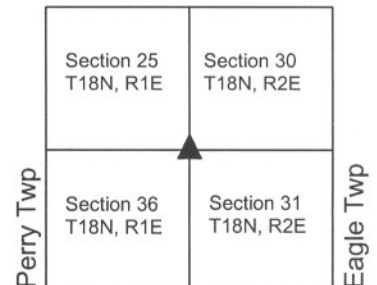
Corner 1 was originally established as a wood post in 1819 and corner 2 was originally established as a wood post in 1821.



*Kenneth E. Hedge*  
Kenneth E. Hedge, County Surveyor

*James S. Swift*  
James S. Swift, IN LS 20200054  
July 25, 2011

Worth Township



# SECTION CORNER RECORD

# SE 550-500

## BOONE COUNTY SURVEYOR'S OFFICE

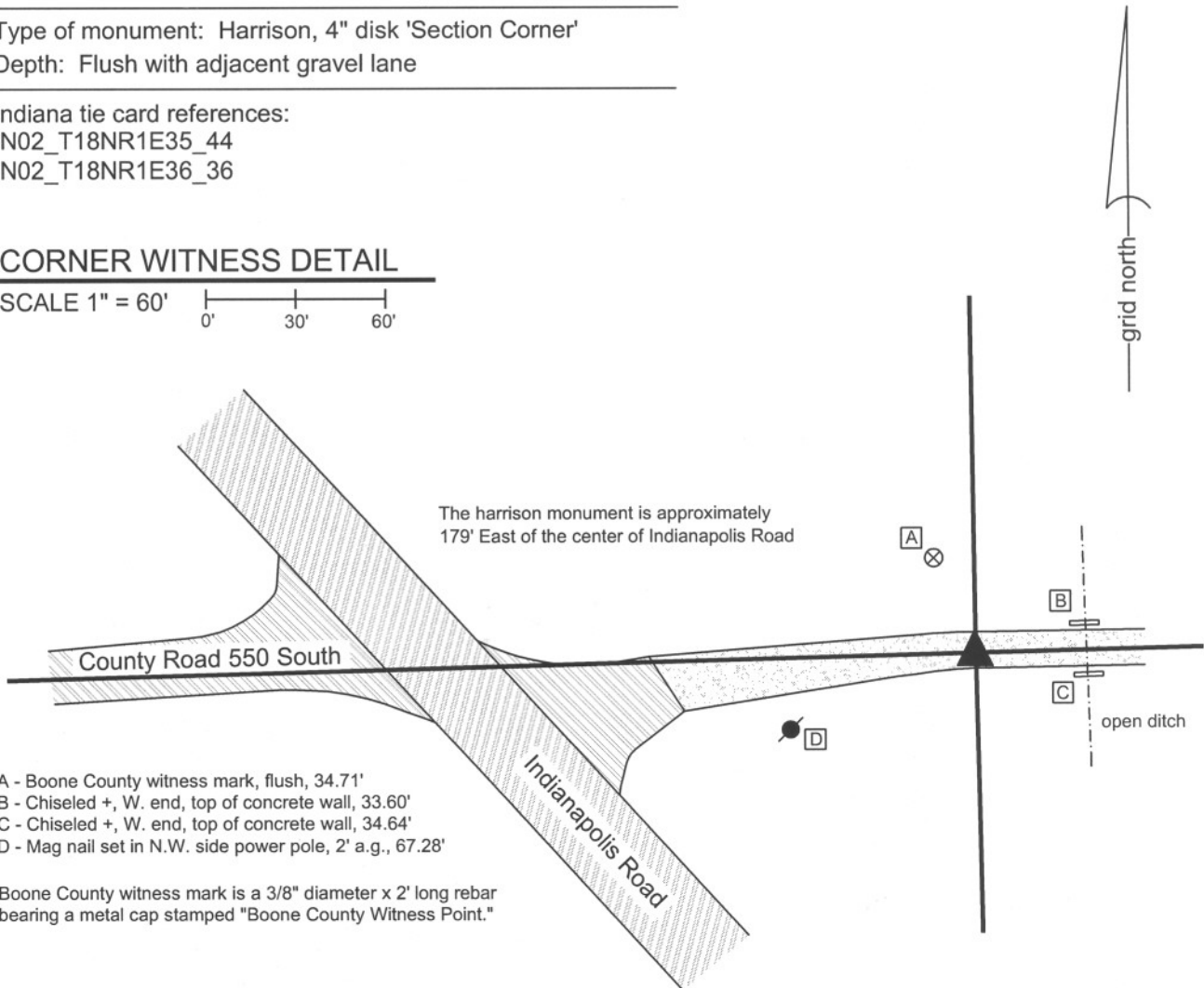
State Plane grid coordinates NAD83 (NSRS 2007):  
North: 1717097.32 East: 3151399.81 (U.S. survey feet)

Type of monument: Harrison, 4" disk 'Section Corner'  
Depth: Flush with adjacent gravel lane

Indiana tie card references:  
IN02\_T18NR1E35\_44  
IN02\_T18NR1E36\_36

### CORNER WITNESS DETAIL

SCALE 1" = 60'  
0' 30' 60'



- A - Boone County witness mark, flush, 34.71'
- B - Chiseled +, W. end, top of concrete wall, 33.60'
- C - Chiseled +, W. end, top of concrete wall, 34.64'
- D - Mag nail set in N.W. side power pole, 2' a.g., 67.28'

Boone County witness mark is a 3/8" diameter x 2' long rebar bearing a metal cap stamped "Boone County Witness Point."

The Harrison monument was set over the etched "+" on a stone found.

A BCS record of November 14-15, 1870 states "Reestablished from roots of Elm and stake set in former survey. Set two Rocks. One 11,8,6 +. Top one 16,12,9 marked +." A BCS tie card with no date, though likely from the early 1990s, shows the corner as a 5/8 inch rebar with no documentation about source. This corner was excavated on October 1, 2008. Prior to excavation, a 5/8 inch rebar was visible flush with the stone/gravel lane. This monument fit with the ties from the undated tie card. Excavation revealed the record stone 4 inches deep, several feet west of the rebar. The stone matches the record description, measuring 12 inches E-W by 9 inches N-S by 16 inches vertical with an etched "+" on top. This stone was removed and the record lower stone was found directly below it, measuring 8 inches E-W by 11 inches N-S by 6 inches thick with a clearly visible etched "+" on top. The "+" on the lower record stone was 0.6 feet S and 3.3 feet W of the 5/8 inch rebar (removed during excavation). The Harrison monument was set over the etched "+" on the lower stone. This corner was originally established as a wood post in June, 1820.

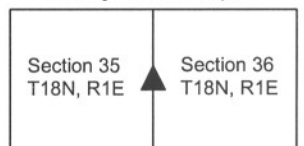


*Kenneth E. Hedge*  
 Kenneth E. Hedge, County Surveyor

*James S. Swift*  
 James S. Swift, IN LS 20200054

March 11, 2009 Revised July 14, 2010

Perry Township





PHOTOGRAPHIC DOCUMENTATION

Date of photography: October 1, 2008

Upper corner stone - view from above.



Lower corner stone - view from above.



Same picture as above with the etched "+" enhanced for ease of visual detection.



View of the record upper stone from east, looking across the stone and along the gravel lane and County Road 550 South.



View of the record upper stone and gravel lane from west, looking toward the east.



For details and documentation, refer to related sheet "Section Corner Record."

# SECTION CORNER RECORD

SE 550-600

## BOONE COUNTY SURVEYOR'S OFFICE

State Plane grid coordinates NAD83 (NSRS 2007):

North: 1717227.75 East: 3156765.01 North: 1717266.55 East: 3156763.94 (U.S. survey feet)

Type & depth of monument:

Standard corner (corner 1): Harrison, 4 inch disk "Section Corner", flush with adjacent ground

Closing corner (corner 2): Stone with divot in top, flush with adjacent ground.

Indiana tie card references:

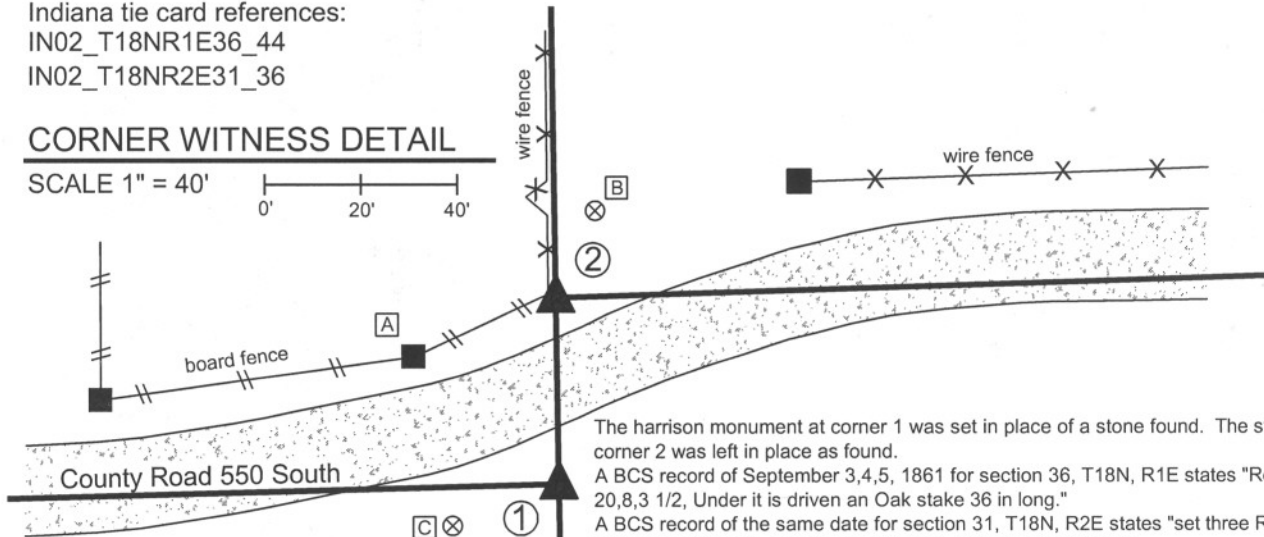
IN02\_T18NR1E36\_44

IN02\_T18NR2E31\_36

### CORNER WITNESS DETAIL

SCALE 1" = 40'

0' 20' 40'



The harrison monument at corner 1 was set in place of a stone found. The stone at corner 2 was left in place as found.  
A BCS record of September 3,4,5, 1861 for section 36, T18N, R1E states "Reestd. Rock 20,8,3 1/2, Under it is driven an Oak stake 36 in long."

A BCS record of the same date for section 31, T18N, R2E states "set three Rocks the under one 4.3 by 3, middle one 7.6 by 5. Top one 22.6 by 6."  
No BCS tie cards were found for this set of corners.

The stone at the standard corner (W 1/4 corner, 36-18-1E) was found with a distinct top, high point at the level of the roots of the grass, slightly below flush. This stone measured 8 inches E-W by 3 1/2 inches N-S by 20 inches vertical. The stone was removed and remnants of the oak stake were found beginning at approximately 27 inches deep, which is coincident with the top of the clay layer. The old stake was in fragments, though discrenable as an object, and the wood material was clearly oak. A harrison monument was set at the position of the top, high point of the stone. A railroad rail was found flush with the adjoining ground 3.2 feet west of the stone. No BCS records were found indicating the source of the rail.

The stone at the closing corner (W 1/4 corner, 31-18-2E) was visible flush with the adjoining ground. The stone has a distinct high point with a hole chiseled in the top. The top 12 inches of the stone were exposed, at which point it remained stable in the ground. The E-W dimensions approximated the record 6 inches and the N-S dimensions were slightly less, at 12 inches down from the top. Fragments of an old post were found along the north edge of the stone. A modern wood corner post was found approximately 1 foot N and 1 foot W. A rebar bearing a metal cap stamped "Amer Cons Engr Indpls" was found 2.6 feet West of the stone.

The two records do not specifically mention the distance between the stones, but analysis of the separate records yields the calculation that they were intended to be set 57.5 links apart, or 37.95 feet. It is not clear that this distance was acutally measured, or whether they were both measured in from the township corner half-mile south. The physical distance between the two stones measured 38.80 feet. The stone at the closing corner falls 0.4 of a foot west of the line connecting the standard corner stone with a harrison monument at the northeast corner, section 36, T18N, R1E.

The preliminary surveys to the Anson Development show the rail as the standard corner and note the stone to be 2.66 feet east of the range line. See Instrument 200600009174, Survey Book 8, pages 11-12, among others.

① E. 1/4 corner, Section 36, T18N, R1E

② W. 1/4 corner, Section 31, T18N, R2E

Distance between monuments = 38.81'  
Record calc. distance = 57.5 links (37.95')  
see records of September 3,4,5, 1861

- A - Mag nail set in E. side wood post, 1' a.g., 40.2' to corner 1, 31.6' to corner 2
- B - Boone County witness mark, flush, 57.46' to corner 1, 20.16' to corner 2
- C - Boone County witness mark, flush, 23.79' to corner 1, 51.92' to corner 2

Boone County witness mark is a 3/8" diameter x 2' long rebarbearing a metal cap stamped "Boone County Witness Point."



*Kenneth E. Hedge*  
Kenneth E. Hedge, County Surveyor

*James S. Swift*  
James S. Swift, IN LS 20200054  
March 11, 2009

Perry Twp Eagle Twp

Section 36 T18N, R1E	Section 31 T18N, R2E
-------------------------	-------------------------



PHOTOGRAPHIC DOCUMENTATION

Date of photography: June 21 & October 28, 2008

Top of standard corner stone as exposed at level of grass roots.



Closing corner stone from above.



Standard corner stone partially exposed, view from north.



View of standard corner stone from south looking across County Road 550 South and along the range line to the north.



Remnants of oak stake found in clay under standard corner stone (see other sheet.)



For details and documentation, refer to related sheet "Section Corner Record."

# SECTION CORNER RECORD

# SE 550-600

## BOONE COUNTY SURVEYOR'S OFFICE

State Plane grid coordinates NAD83 (2011):

Corner 1: North: 1717227.74 East: 3156765.13 (U.S. survey feet)

Corner 2: North: 1717266.54 East: 3156764.07 (U.S. survey feet)

Corner 1: 1/4-inch hole drilled in sidewalk, flush

Corner 2: Stone with divot in top, 4" below grade

Indiana tie card references:

IN02\_T18NR1E36\_44 IN02\_T18NR2E31\_36

### CORNER WITNESS DETAIL

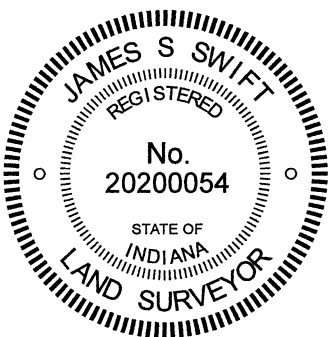
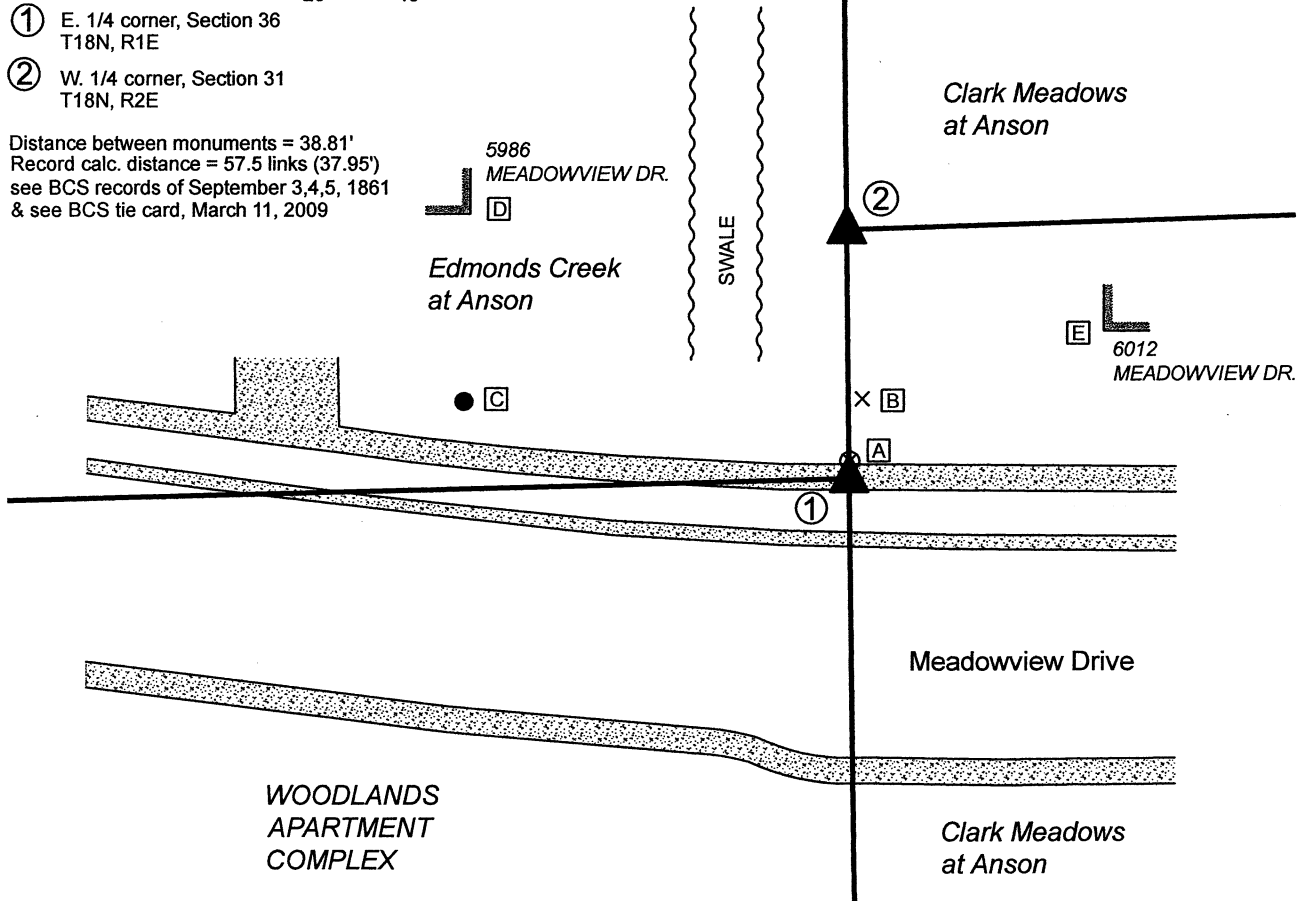
SCALE 1" = 40'

① E. 1/4 corner, Section 36  
T18N, R1E

② W. 1/4 corner, Section 31  
T18N, R2E

Distance between monuments = 38.81'  
Record calc. distance = 57.5 links (37.95')  
see BCS records of September 3,4,5, 1861  
& see BCS tie card, March 11, 2009

- A - Boone County witness mark, flush, set on line between stone and drill hole, 2.8' to Corner 1, 36.0' to Corner 2
- B - Chisel mark on N. side manhole casting 12.7' to Corner 1, 26.5' to Corner 2
- C - East edge flagpole, 2' a.g., 61.7' to Corner 1, 65.1' to Corner 2
- D - S.E. cor, brick house, 2' a.g., 72.6' to Corner 1, 58.7' to Corner 2
- E - S.W. cor, house, 7' a.g. 45.8' to Corner 1, 43.6' to Corner 2



Kenneth E. Hedge, County Surveyor

James S. Swift, IN LS 20200054

Perry Twp Eagle Twp

Section 36 T18N, R1E	Section 31 T18N, R2E
-------------------------	-------------------------

# SECTION CORNER RECORD

SE 550-600

## BOONE COUNTY SURVEYOR'S OFFICE

### WRITTEN DOCUMENTATION

The stone at Corner 2 was found undisturbed. Corner 1 was previously marked by a Harrison monument which has been removed during construction. This position was marked by a ½-inch diameter hole drilled in a concrete sidewalk. Please refer to the most recent documentation for this corner, Section Corner Record SE 550-600, dated March 11, 2009. That document explains the perpetuation of these corners as follows:

The Harrison monument at Corner 1 (replaced 2021 with a drill hole in concrete) was set in place of a stone found. The stone at Corner 2 was left in place as found.

A BCS record of September 3,4,5, 1861 for section 36, T18N, R1E states "Reestd. Rock 20,8,3 1/2, Under it is driven an Oak stake 36 in long." A BCS record of the same date for section 31, T18N, R2E states "set three Rocks the under one 4.3 by 3, middle one 7.6 by 5. Top one 22.6 by 6."

No BCS tie cards were found for this set of corners (prior to 2009).

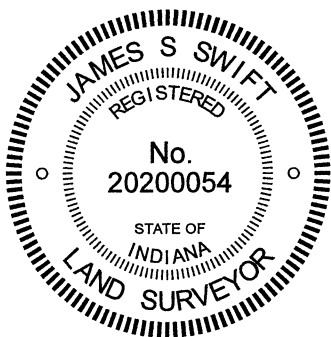
The stone at the standard corner (Corner 1, E 1/4 corner, 36-18-1E) was found with a distinct top, high point at the level of the roots of the grass, slightly below flush. This stone measured 8 inches E-W by 3 1/2 inches N-S by 20 inches vertical.

The stone was removed and remnants of the oak stake were found beginning at approximately 27 inches deep, which is coincident with the top of the clay layer. The old stake was in fragments, though discernable as an object, and the wood material was clearly oak. A Harrison monument was set at the position of the top, high point of the stone. A railroad rail was found flush with the adjoining ground 3.2 feet west of the stone. No BCS records were found indicating the source of the rail.

The stone at the closing corner (Corner 2, W 1/4 corner, 31-18-2E) was visible flush with the adjoining ground. The stone has a distinct high point with a hole chiseled in the top. The top 12 inches of the stone were exposed, at which point it remained stable in the ground. The E-W dimensions approximated the record 6 inches and the N-S dimensions were slightly less, at 12 inches down from the top. Fragments of an old post were found along the north edge of the stone. A modern wood corner post was found approximately 1 foot N and 1 foot W. A rebar bearing a metal cap stamped "Amer Cons Engr Indpls" was found 2.6 feet West of the stone.

The two records do not specifically mention the distance between the stones, but analysis of the separate records yields the calculation that they were intended to be set 57.5 links apart, or 37.95 feet. It is not clear that this distance was physically measured, or whether they were both measured independently from the township corner half-mile south. The physical distance between the two stones measured 38.81 feet. The stone at the closing corner falls 0.4 of a foot west of the line connecting the standard corner stone with a Harrison monument at the northeast corner, section 36, T18N, R1E. The preliminary surveys to the Anson Development show the rail as the standard corner and note the stone to be 2.66 feet east of the range line. See Instrument 200600009174, Survey Book 8, pages 11-12, among others. 2021 note: Surveys and plats for the adjoining subdivisions, created since 2009, hold the corners as established per the 2009 BCS Section Corner Record.

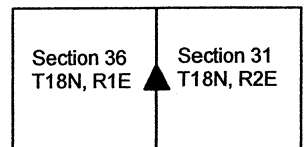
Variations between coordinates shown hereon and shown on the 2009 document represent variations in observed GPS positions with respect to the NAD83 (NSRS 2007) adjustment and the NAD83 (2011) adjustment.



*Kenneth E. Hedge*  
Kenneth E. Hedge, County Surveyor

*James S. Swift*  
James S. Swift, IN LS 20200054

Perry Twp Eagle Twp





# SECTION CORNER RECORD

## BOONE COUNTY SURVEYOR'S OFFICE

# SE 600-500

NOTE: The Harrison Monument set at Corner 1 in 2010 was moved by a landowner in 2015. At the time of publication of this document, the displaced monument remains in the ground, 12.1' E and 2.4' N of its original position. This monument should be disregarded. A 30 inch length of rebar with a metal cap stamped 'Boone County Surveyor' was set at the proper position of Corner 1 on April 19, 2016. This monument is 14 inches below the surface of the tilled field, 4.5 feet west of a 30 inch diameter hackberry tree.

State Plane grid coordinates NAD83 (NSRS 2007):

Corner 1: N: 1714436.16 E: 3151447.14 (U.S. survey feet)

Corner 2: N: 1714436.93 E: 3151473.53 (U.S. survey feet)

Corner 1: 30 inch rebar with metal cap, 14 inches deep

Corner 2: Harrison, 4" disk 'Section Corner' 3 inches above grade

Indiana tie card references:

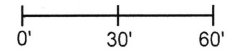
IN02\_T17NR1E01\_08 IN02\_T17NR1E02\_00

IN02\_T18NR1E35\_80 IN02\_T18NR1E36\_72

- A - Boone County witness mark, flush, 32.59' to corner 1, 34.76' to corner 2
- B - Mag nail set in W. side wood post, 2.0' a.g., 36.3' to corner 1, 10.0' to corner 2
- C - 5/8" capped rebar (Dodge), flush, 9.4' to corner 1, 17.2' to corner 2
- D - Boone County witness mark, flush, 29.2' to corner 1, 26.9' to corner 2

### CORNER WITNESS DETAIL

SCALE 1" = 60'



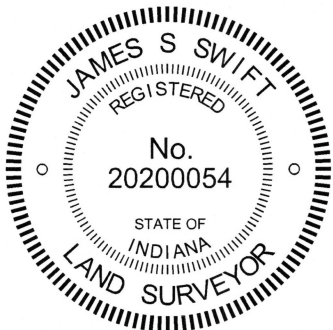
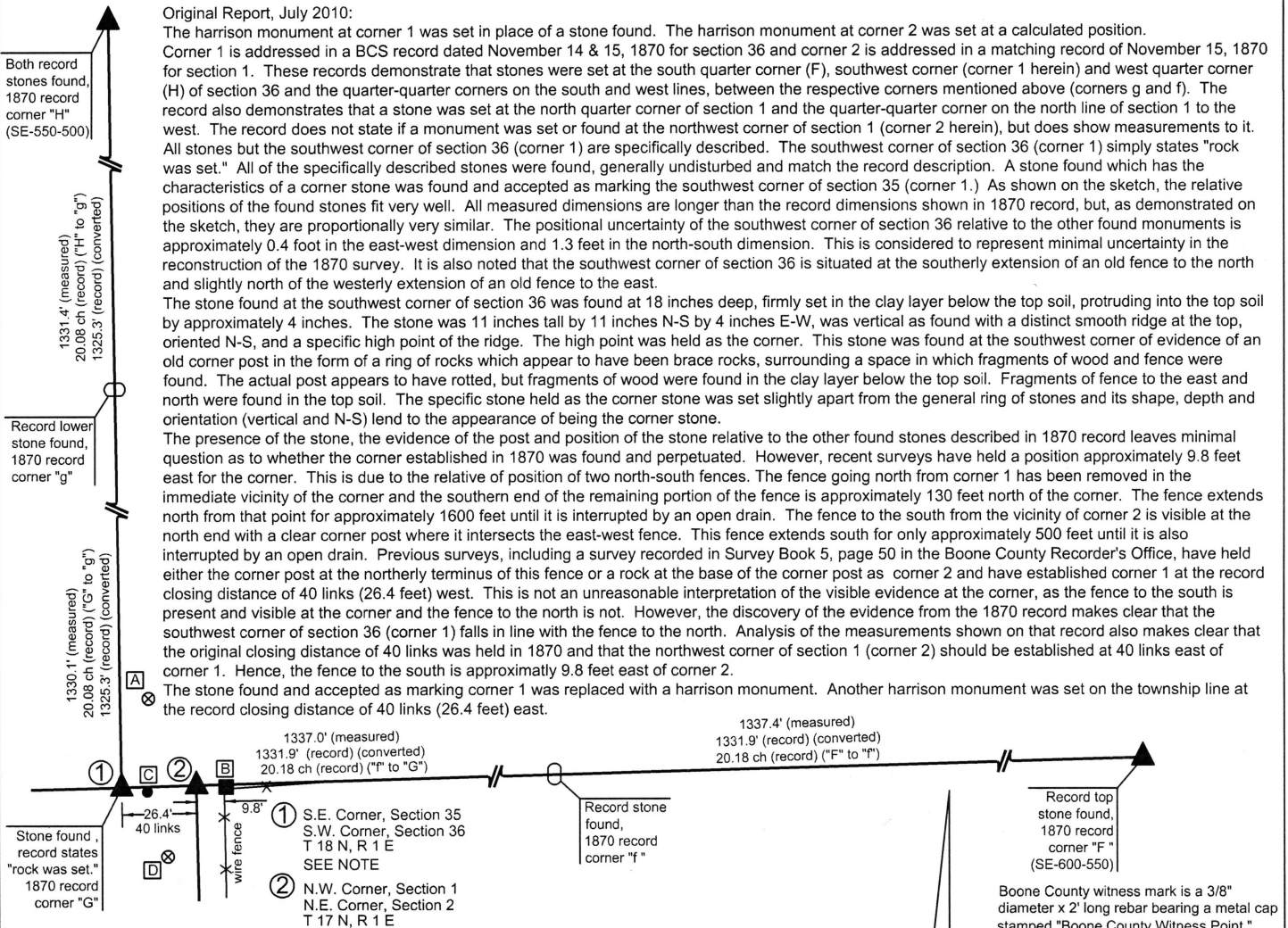
Original Report, July 2010:

The Harrison monument at corner 1 was set in place of a stone found. The Harrison monument at corner 2 was set at a calculated position. Corner 1 is addressed in a BCS record dated November 14 & 15, 1870 for section 36 and corner 2 is addressed in a matching record of November 15, 1870 for section 1. These records demonstrate that stones were set at the south quarter corner (F), southwest corner (corner 1 herein) and west quarter corner (H) of section 36 and the quarter-quarter corners on the south and west lines, between the respective corners mentioned above (corners g and f). The record also demonstrates that a stone was set at the north quarter corner of section 1 and the quarter-quarter corner on the north line of section 1 to the west. The record does not state if a monument was set or found at the northwest corner of section 1 (corner 2 herein), but does show measurements to it. All stones but the southwest corner of section 36 (corner 1) are specifically described. The southwest corner of section 36 (corner 1) simply states "rock was set." All of the specifically described stones were found, generally undisturbed and match the record description. A stone found which has the characteristics of a corner stone was found and accepted as marking the southwest corner of section 35 (corner 1.) As shown on the sketch, the relative positions of the found stones fit very well. All measured dimensions are longer than the record dimensions shown in 1870 record, but, as demonstrated on the sketch, they are proportionally very similar. The positional uncertainty of the southwest corner of section 36 relative to the other found monuments is approximately 0.4 foot in the east-west dimension and 1.3 feet in the north-south dimension. This is considered to represent minimal uncertainty in the reconstruction of the 1870 survey. It is also noted that the southwest corner of section 36 is situated at the southerly extension of an old fence to the north and slightly north of the westerly extension of an old fence to the east.

The stone found at the southwest corner of section 36 was found at 18 inches deep, firmly set in the clay layer below the top soil, protruding into the top soil by approximately 4 inches. The stone was 11 inches tall by 11 inches N-S by 4 inches E-W, was vertical as found with a distinct smooth ridge at the top, oriented N-S, and a specific high point of the ridge. The high point was held as the corner. This stone was found at the southwest corner of evidence of an old corner post in the form of a ring of rocks which appear to have been brace rocks, surrounding a space in which fragments of wood and fence were found. The actual post appears to have rotted, but fragments of wood were found in the clay layer below the top soil. Fragments of fence to the east and north were found in the top soil. The specific stone held as the corner stone was set slightly apart from the general ring of stones and its shape, depth and orientation (vertical and N-S) lend to the appearance of being the corner stone.

The presence of the stone, the evidence of the post and position of the stone relative to the other found stones described in 1870 record leaves minimal question as to whether the corner established in 1870 was found and perpetuated. However, recent surveys have held a position approximately 9.8 feet east for the corner. This is due to the relative position of two north-south fences. The fence going north from corner 1 has been removed in the immediate vicinity of the corner and the southern end of the remaining portion of the fence is approximately 130 feet north of the corner. The fence extends north from that point for approximately 1600 feet until it is interrupted by an open drain. The fence to the south from the vicinity of corner 2 is visible at the north end with a clear corner post where it intersects the east-west fence. This fence extends south for only approximately 500 feet until it is also interrupted by an open drain. Previous surveys, including a survey recorded in Survey Book 5, page 50 in the Boone County Recorder's Office, have held either the corner post at the northerly terminus of this fence or a rock at the base of the corner post as corner 2 and have established corner 1 at the record closing distance of 40 links (26.4 feet) west. This is not an unreasonable interpretation of the visible evidence at the corner, as the fence to the south is present and visible at the corner and the fence to the north is not. However, the discovery of the evidence from the 1870 record makes clear that the southwest corner of section 36 (corner 1) falls in line with the fence to the north. Analysis of the measurements shown on that record also makes clear that the original closing distance of 40 links was held in 1870 and that the northwest corner of section 1 (corner 2) should be established at 40 links east of corner 1. Hence, the fence to the south is approximately 9.8 feet east of corner 2.

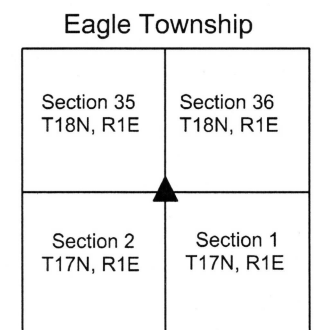
The stone found and accepted as marking corner 1 was replaced with a Harrison monument. Another Harrison monument was set on the township line at the record closing distance of 40 links (26.4 feet) east.



*Kenneth E. Hedge*  
 Kenneth E. Hedge, County Surveyor

*James S. Swift*  
 James S. Swift, IN LS 20200054  
 July 14, 2010, Revised April 27, 2017

grid north





PHOTOGRAPHIC DOCUMENTATION

Date of photography: May 22 - June 9, 2009

Corner 1: the hole where evidence of the old corner post was found, with the brace rocks which were removed from the hole.



Corner 1: the stone found and held as marking the corner. View from above with photo oriented showing the distinct N-S ridge and high point. This stone had not yet been found when the photo to the left was taken.



Corner " f " : stone found, described in the 1870 record as "set rock full of seams, white spots, etc."



Corner " g " : Stone found next to corner post. The stone matches the description in the 1870 record as being "5,4,3 1/2 +."



Corner 1: the harrison monument set. View from the north.



Corner 2: the harrison monument set and the corner post 9.8 feet east. View from the N.W.



For details and documentation, refer to related sheet "Section Corner Record."



# SECTION CORNER RECORD

# SE 600-550

## BOONE COUNTY SURVEYOR'S OFFICE

State Plane grid coordinates NAD83 (NSRS 2007):

North: 1714514.09 East: 3154120.42 (U.S. survey feet) (corner 1)

Type of monument: Harrison, 4" disk 'Section Corner' (corner 1)

Depth: 2 inches above adjacent ground in concrete pillar

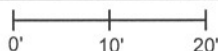
Indiana tie card references:

IN02\_T18NR1E36\_76

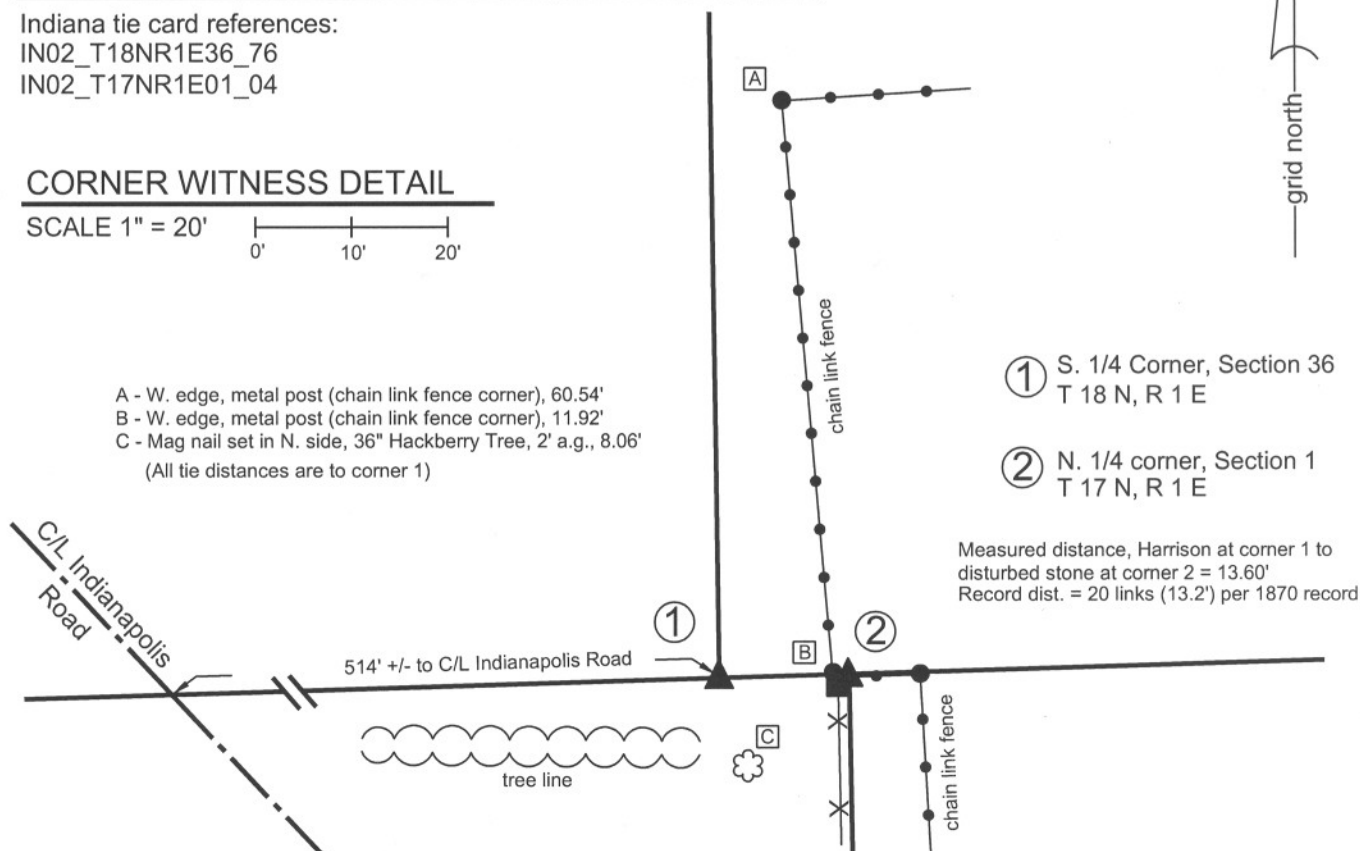
IN02\_T17NR1E01\_04

### CORNER WITNESS DETAIL

SCALE 1" = 20'



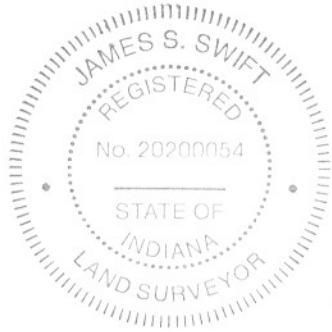
- A - W. edge, metal post (chain link fence corner), 60.54'
  - B - W. edge, metal post (chain link fence corner), 11.92'
  - C - Mag nail set in N. side, 36" Hackberry Tree, 2' a.g., 8.06'
- (All tie distances are to corner 1)



- ① S. 1/4 Corner, Section 36  
T 18 N, R 1 E
- ② N. 1/4 corner, Section 1  
T 17 N, R 1 E

Measured distance, Harrison at corner 1 to  
disturbed stone at corner 2 = 13.60'  
Record dist. = 20 links (13.2') per 1870 record.

The harrison monument was set in place of a stone found.  
BCS records of November 14-15, 1870 state "Reestablished from stumps of both trees. Set a rough Rock. 10,8,6 +. Top one 18, 14,6 +." (S1/4 corner 36-18-1E). and "Established 20 links E. of F, Sect. 36. Set Rock. 16, 11, 5 marked +." (N 1/4 corner, 1-17-1E). A BCS tie card dated December 14, 2005 calls for a stone at the N 1/4 corner, 1-17-1E and a wooden fence post at the S. 1/4 corner, 36-18-1E. This corner was excavated on September 17, 2008. The above ground portion of the post shown on the 2005 tie card was found lying on the ground and the base was found intact in the ground. The record top stone was found 1 foot deep against the south edge of the base of the post. The "+" was clearly visible on the top of the stone. The stone was vertical, with the 14 inch dimension E-W and the 6 inch dimension N-S with the flat side of the stone facing North, against the post. The record bottom stone was not found. It is plausible that both stones were removed at the time the post was set and only the top stone was replaced. The stone did not appear to be acting as a brace rock, as no fence would have been attached to the post towards the south, the depth was not sufficient to properly brace the post and no other bracing rocks were found around the post. The stone did have several characteristics of a corner stone in the form of vertical placement, orientation in cardinal directions and etched "+" on top. The harrison monument was set in place of the etched "+" on the stone. The stone to the east has been severely disturbed due to the installation of a large metal corner post for a chain link fence. This corner is not an original federal corner and the stone was left in place, disturbed.  
The south quarter corner of section 36, T 18 N, R 1 E was originally established as a wood post in 1819.

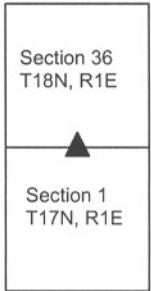


*Kenneth E. Hedge*  
Kenneth E. Hedge, County Surveyor

*James S. Swift*  
James S. Swift, IN LS 20200054

March 11, 2009

Perry Township



PHOTOGRAPHIC DOCUMENTATION

Date of photography: September 18, 2008

Corner stone, fragments of in-ground base of post and broken off bottom of above ground portion of post, lying to the east of the stone. Overhead view from south.



Corner stone, fragments of in-ground base of post and broken off bottom of above ground portion of post, lying to the east of the stone. Overhead view from north.



Close-up of the stone and fragments of in-ground portion of post at the north edge of the stone.



Same picture as to the left with the etched "+" on the top of the stone enhanced for ease of visual detection.



For details and documentation, refer to related sheet "Section Corner Record."