

SECTION CORNER RECORD

BOONE COUNTY SURVEYOR'S OFFICE

SE 400-000

State Plane grid coordinates NAD83 (2011):

Corner 1: North: 1724387.67 East: 3124968.43 (U.S. survey feet)

Corner 2: North: 1724511.75 East: 3124967.30 (U.S. survey feet)

Type of monument: Harrison, 4" disk 'Section Corner'

Depth: Flush with adjacent ground

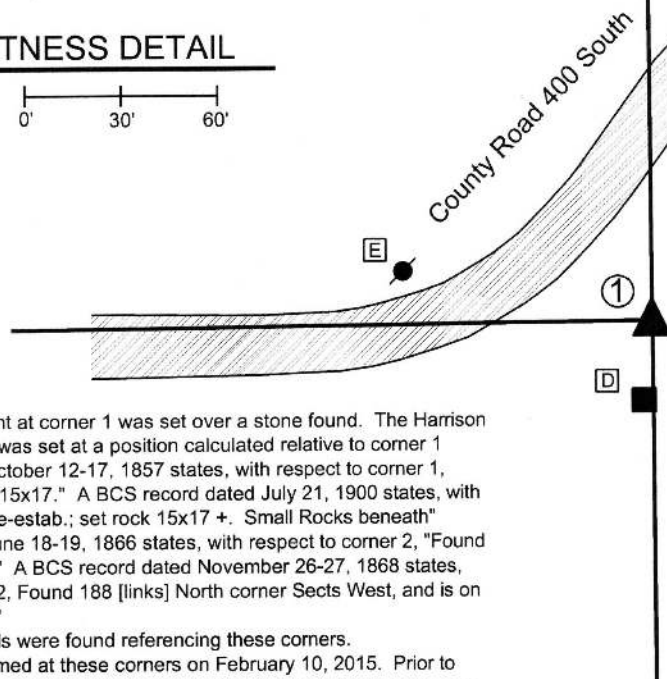
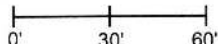
Indiana tie card references:

IN02_T18NR1W24_80 IN02_T18NR1E14_72

IN02_T18NR1W25_08 IN02_T18NR1E23_00

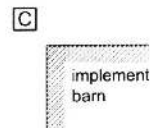
CORNER WITNESS DETAIL

SCALE 1" = 60'



- A - Mag nail set in S. side power pole, 2' a.g. 185.0' to corner 1, 65.0' to corner 2
- B - Mag nail set in S. side power pole, 2.5' a.g. 143.8' to corner 1, 51.6' to corner 2
- C - N.W. corner of foundation, metal implement bar 88.8' to corner 1, 200.2' to corner 2
- D - Mag nail set in N. side, wood post, 0.8' a.g. 22.2' to corner 1, 146.1' to corner 2
- E - Mag nail set in E. side power pole, 2' a.g. 77.2' to corner 1, 131.3' to corner 2

Branaman Barn and Implement lot



The Harrison monument at corner 1 was set over a stone found. The Harrison monument at corner 2 was set at a position calculated relative to corner 1. A BCS record dated October 12-17, 1857 states, with respect to corner 1, "Reestablished. Rock 15x17." A BCS record dated July 21, 1900 states, with respect to corner 1, "Re-estab.; set rock 15x17 +. Small Rocks beneath" A BCS record dated June 18-19, 1866 states, with respect to corner 2, "Found from Burr Oak (down)." A BCS record dated November 26-27, 1868 states, with respect to corner 2, Found 188 [links] North corner Sects West, and is on East side of a Hickory."

No recent BCS tie cards were found referencing these corners.

Excavation was performed at these corners on February 10, 2015. Prior to excavation, Harrison monuments were found ostensibly marking each corner. The two monuments were found to be located exactly 188 links (124.08 feet) apart from each other. The source of the monuments is not known, though it is likely that they were set by representatives of the former Anderson & Associates in approximately 2005. Excavation at corner 1 yielded a stone found at 8 inches deep. The stone matched the 15x17 inch dimensions called in the 1857 and 1900 record. As found, the stone was mostly vertical, though leaning slightly to the northwest. A piece of wire was found partially wrapped around the stone. The wire appeared to be serving a purpose of holding the stone in a vertical orientation, perhaps while the surrounding ground was refilled. The stone fit well with the evidence of the line to the west, in the form of the center of County Road 400 South, and was slightly east of the old end post to the south. No specific marks were found on the stone, though it is noted that the stone had a rough surface and marks are often difficult to detect on such rocks. A smaller rock (5x7x8) was found nearby, but not underneath the stone. A possible explanation for the fact that the smaller rock was not underneath the primary stone would be that at some point excavation activities in this area disturbed the ground. Perhaps the primary stone and smaller rocks were all removed and only the primary stone replaced. In the field, this possibility appeared to be supported by the curious piece of wire which appeared to have held the stone in a vertical orientation at some point. Excavation in the vicinity of corner 2 yielded no further evidence of that corner. The 188 link offset, being the original federal offset and confirmed by the BCS records, was held for the separation between the corners. Corner 2 was established on the range line, as defined by the stone at corner 1 and a wood post at or near to the the standard corner 1/2 mile north. A Harrison monument was set at this position.

Corner 1 was originally established as a wood post in 1819. Corner 2 was originally established as a wood post in 1820.

Kenneth E. Hedge
 Kenneth E. Hedge, County Surveyor

James S. Swift
 James S. Swift, IN LS 20200054
 March 28, 2016



Harrison Township

Section 24 T18N, R1W	Section 19 T18N, R1E
Section 25 T18N, R1W	Section 30 T18N, R1E

SECTION CORNER RECORD

SE 400-050

BOONE COUNTY SURVEYOR'S OFFICE

State Plane grid coordinates NAD83 (CORS96):

North: 1724530.87 East: 3127305.00 (U.S. survey feet)

Type of monument: Harrison, 4" disk 'Section Corner'

Depth: One inch below adjacent road surface

Indiana tie card references:

IN02_T18NR1E19_76

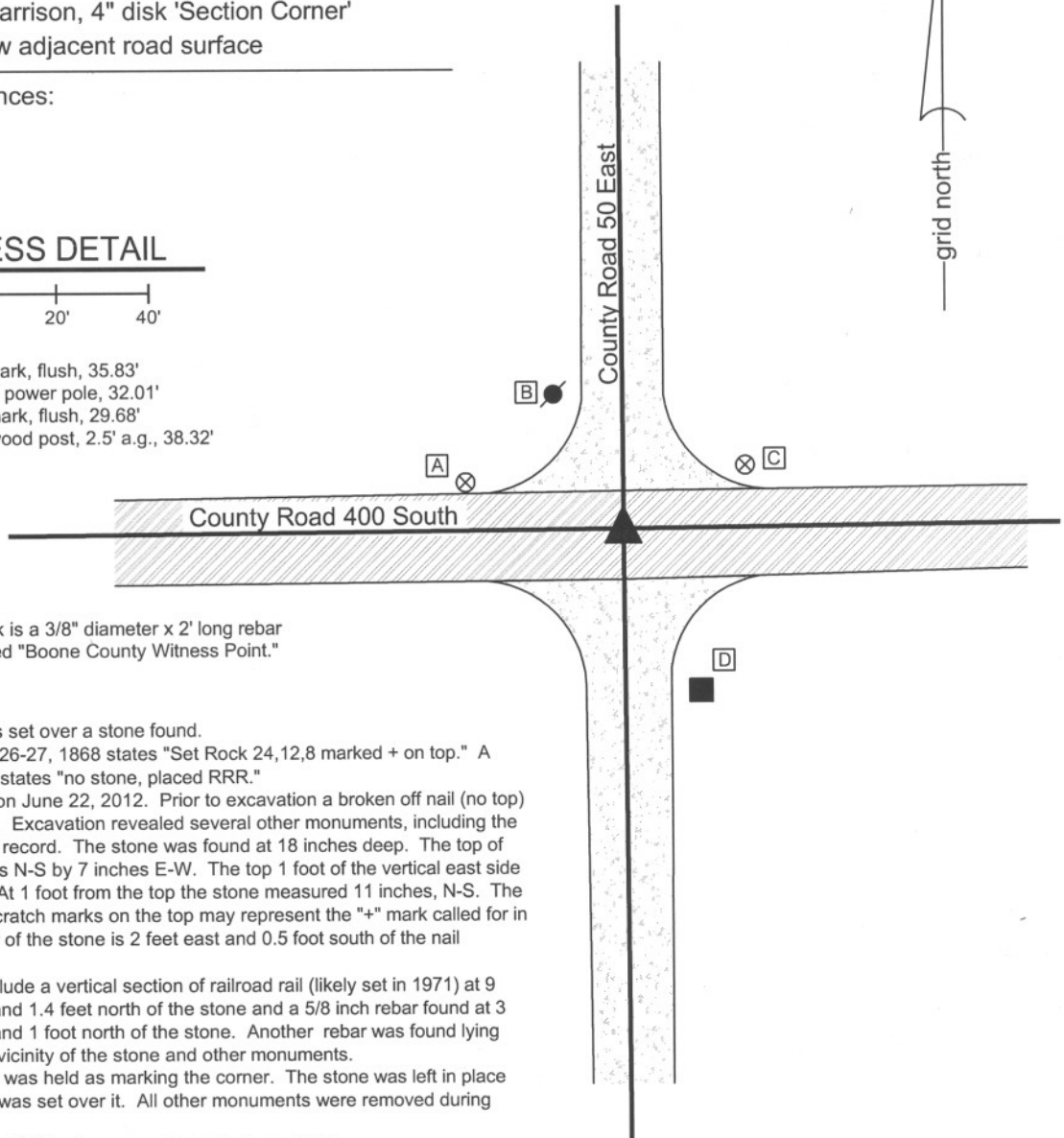
IN02_T18NR1E30_04

CORNER WITNESS DETAIL

SCALE 1" = 40'



- A - Boone County witness mark, flush, 35.83'
- B - Mag nail set in S.W. side power pole, 32.01'
- C - Boone County witness mark, flush, 29.68'
- D - Mag nail set in W. side wood post, 2.5' a.g., 38.32'



Boone County witness mark is a 3/8" diameter x 2' long rebar bearing a metal cap stamped "Boone County Witness Point."

The harrison monument was set over a stone found.

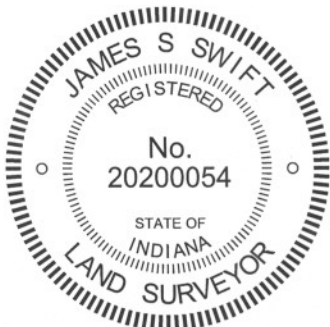
A BCS record of November 26-27, 1868 states "Set Rock 24,12,8 marked + on top." A BCS tie card June 25, 1971 states "no stone, placed RRR."

This corner was excavated on June 22, 2012. Prior to excavation a broken off nail (no top) was found at 2 inches deep. Excavation revealed several other monuments, including the stone described in the 1868 record. The stone was found at 18 inches deep. The top of the stone measured 9 inches N-S by 7 inches E-W. The top 1 foot of the vertical east side of the stone was exposed. At 1 foot from the top the stone measured 11 inches, N-S. The rock is of a soft material. Scratch marks on the top may represent the "+" mark called for in the record. The top, center of the stone is 2 feet east and 0.5 foot south of the nail originally found.

Other monuments found include a vertical section of railroad rail (likely set in 1971) at 9 inches deep, 1.8 feet west and 1.4 feet north of the stone and a 5/8 inch rebar found at 3 inches deep, 1.5 feet west and 1 foot north of the stone. Another rebar was found lying horizontal in the immediate vicinity of the stone and other monuments.

The top, center of the stone was held as marking the corner. The stone was left in place and a harrison monument was set over it. All other monuments were removed during excavation.

This corner was originally established as a wood post in June, 1820.



Kenneth E. Hedge
Kenneth E. Hedge, County Surveyor

James S. Swift
James S. Swift, IN LS 20200054
January 15, 2013

Harrison Township

Section 19
T18N, R1E

Section 30
T18N, R1E

PHOTOGRAPHIC DOCUMENTATION

Date of photography: June 22, 2013

View of the stone as first exposed.
View from above and south.



View of the stone more fully exposed.
View from the above and east.



View from the east, looking across the stone
and west along County Road 400 South.



View from the north, looking across the stone
and south along County Road 50 East.



For details and documentation, refer to related sheet "Section Corner Record."

SECTION CORNER RECORD

SE 400-100

BOONE COUNTY SURVEYOR'S OFFICE

State Plane grid coordinates NAD83 (CORS96):

North: 1724556.97 East: 3129967.83 (U.S. survey feet)

Type of monument: Harrison, 4" disk 'Section Corner'

Depth: One inch below adjacent road surface

Indiana tie card references:

IN02_T18NR1E19_80 IN02_T18NR1E20_72

IN02_T18NR1E30_00 IN02_T18NR1E29_00

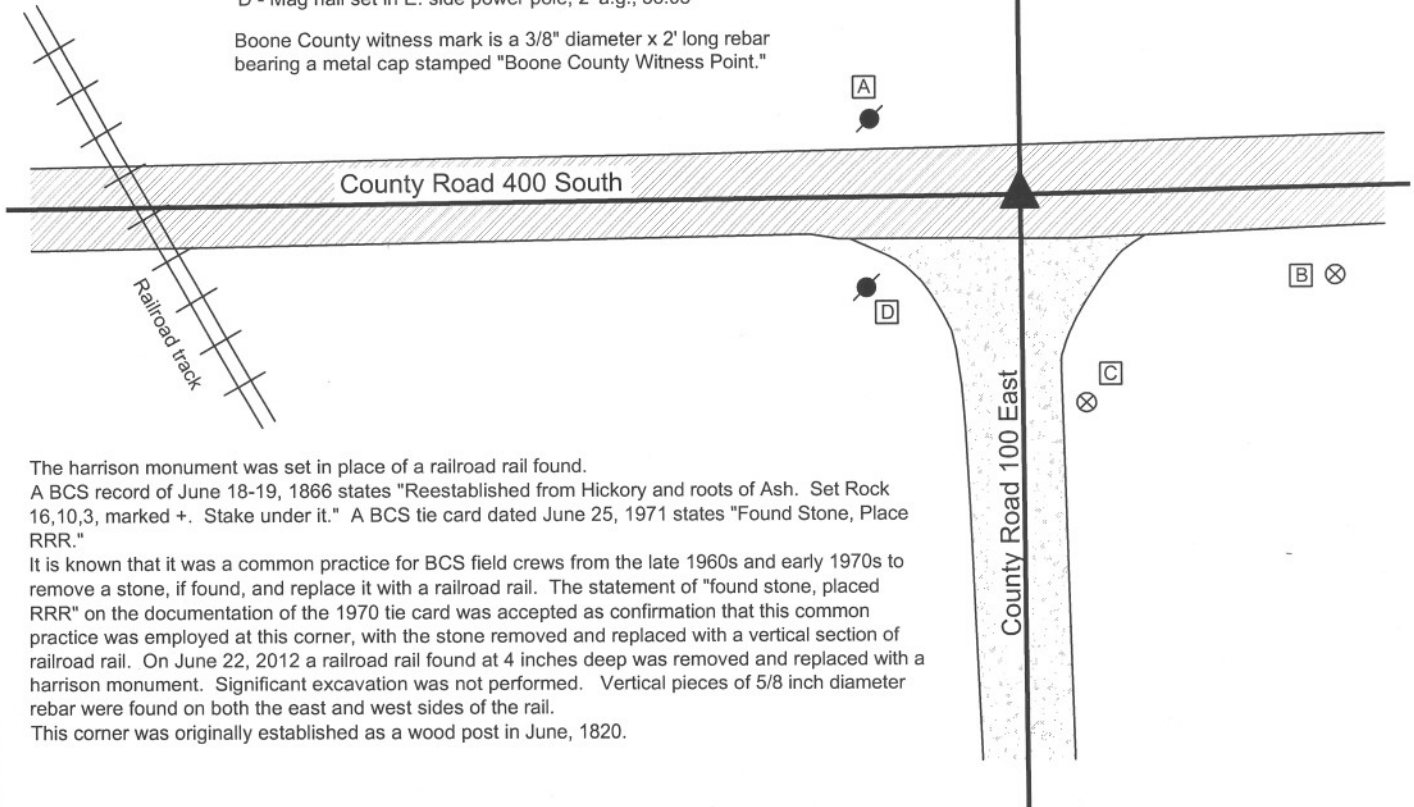
CORNER WITNESS DETAIL

SCALE 1" = 40'



- A - Mag nail set in S. side power pole, 2' a.g., 34.10'
- B - Boone County witness mark, flush, 68.01'
- C - Boone County witness mark, flush, 45.23'
- D - Mag nail set in E. side power pole, 2' a.g., 36.03'

Boone County witness mark is a 3/8" diameter x 2' long rebar bearing a metal cap stamped "Boone County Witness Point."

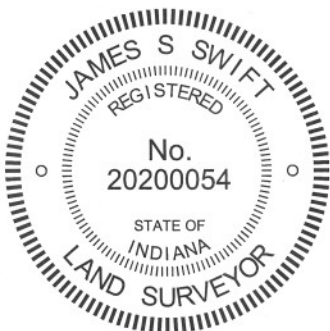


The harrison monument was set in place of a railroad rail found.

A BCS record of June 18-19, 1866 states "Reestablished from Hickory and roots of Ash. Set Rock 16,10,3, marked +. Stake under it." A BCS tie card dated June 25, 1971 states "Found Stone, Place RRR."

It is known that it was a common practice for BCS field crews from the late 1960s and early 1970s to remove a stone, if found, and replace it with a railroad rail. The statement of "found stone, placed RRR" on the documentation of the 1970 tie card was accepted as confirmation that this common practice was employed at this corner, with the stone removed and replaced with a vertical section of railroad rail. On June 22, 2012 a railroad rail found at 4 inches deep was removed and replaced with a harrison monument. Significant excavation was not performed. Vertical pieces of 5/8 inch diameter rebar were found on both the east and west sides of the rail.

This corner was originally established as a wood post in June, 1820.



Kenneth E. Hedge
 Kenneth E. Hedge, County Surveyor

James S. Swift
 James S. Swift, IN LS 20200054
 January 15, 2013

Harrison Township

Section 19 T18N, R1E	Section 20 T18N, R1E
Section 30 T18N, R1E	Section 29 T18N, R1E

SECTION CORNER RECORD

SE 450-100

BOONE COUNTY SURVEYOR'S OFFICE

State Plane grid coordinates NAD83 (NSRS 2007):

North: 1721893.32 East: 3129990.30 (U.S. survey feet)

Type of monument: Harrison, 4" disk 'Section Corner'

Depth: six inches below adjacent gravel road surface

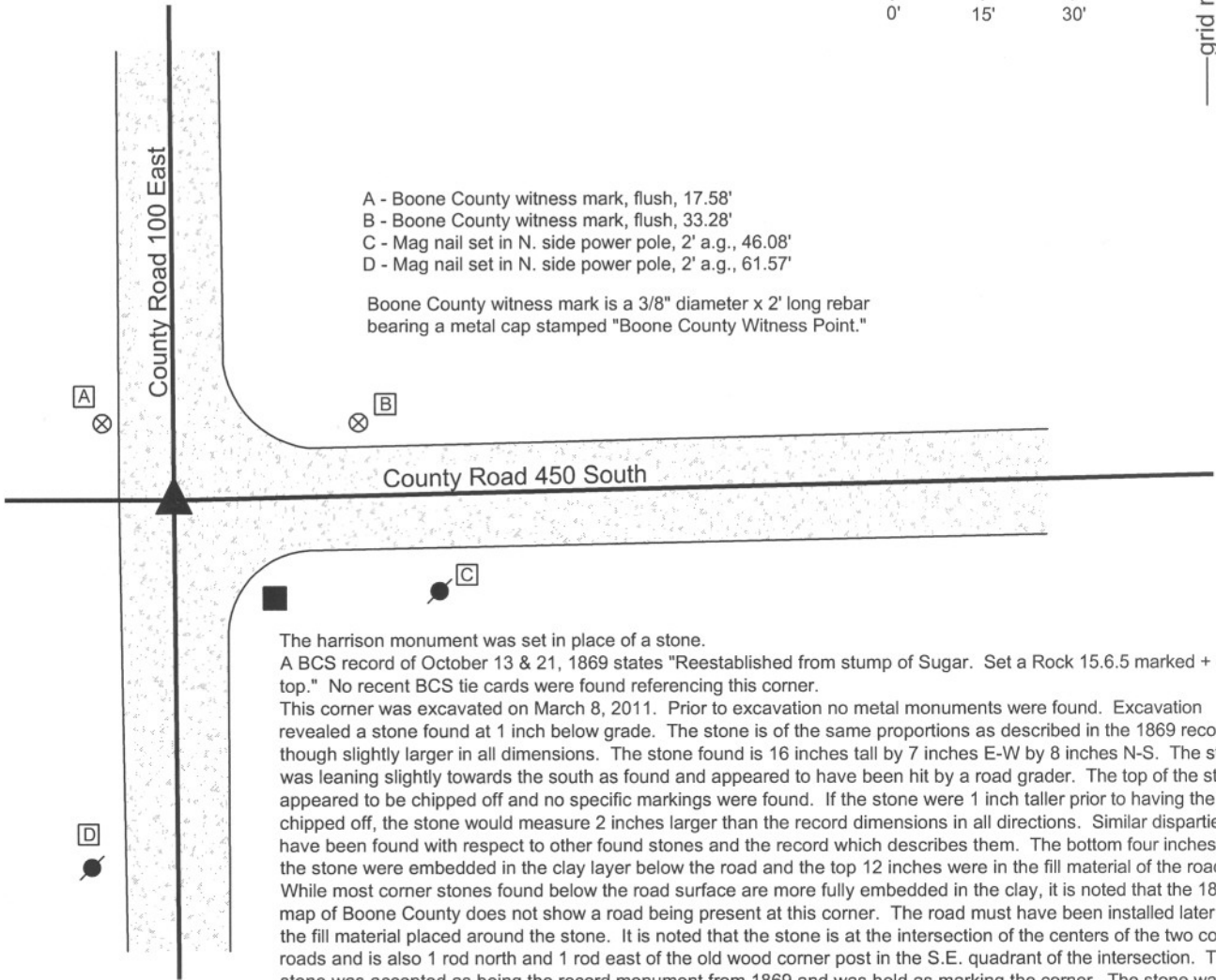
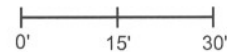
Indiana tie card references:

IN02_T18NR1E30_44

IN02_T18NR1E29_36

CORNER WITNESS DETAIL

SCALE 1" = 30'

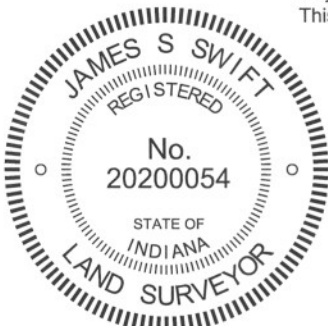


The harrison monument was set in place of a stone.

A BCS record of October 13 & 21, 1869 states "Reestablished from stump of Sugar. Set a Rock 15.6.5 marked + on top." No recent BCS tie cards were found referencing this corner.

This corner was excavated on March 8, 2011. Prior to excavation no metal monuments were found. Excavation revealed a stone found at 1 inch below grade. The stone is of the same proportions as described in the 1869 record, though slightly larger in all dimensions. The stone found is 16 inches tall by 7 inches E-W by 8 inches N-S. The stone was leaning slightly towards the south as found and appeared to have been hit by a road grader. The top of the stone appeared to be chipped off and no specific markings were found. If the stone were 1 inch taller prior to having the top chipped off, the stone would measure 2 inches larger than the record dimensions in all directions. Similar disparities have been found with respect to other found stones and the record which describes them. The bottom four inches of the stone were embedded in the clay layer below the road and the top 12 inches were in the fill material of the road. While most corner stones found below the road surface are more fully embedded in the clay, it is noted that the 1876 map of Boone County does not show a road being present at this corner. The road must have been installed later and the fill material placed around the stone. It is noted that the stone is at the intersection of the centers of the two county roads and is also 1 rod north and 1 rod east of the old wood corner post in the S.E. quadrant of the intersection. The stone was accepted as being the record monument from 1869 and was held as marking the corner. The stone was removed and a harrison monument was set in the position of the base of the stone, where it had been embedded in the clay layer below the road.

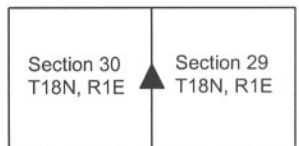
This corner was originally established as a wood post in June, 1820.



Kenneth E. Hedge
 Kenneth E. Hedge, County Surveyor

James S. Swift
 James S. Swift, IN LS 20200054
 March 1, 2012

Harrison Township Perry Township



PHOTOGRAPHIC DOCUMENTATION

Date of photography: March 8, 2011

View of the stone as first exposed.



View of the stone from the west.



View of the stone from the north.



View of the stone removed from the road bed, lying next to the hole from which it was removed.



For details and documentation, refer to related sheet "Section Corner Record."

SECTION CORNER RECORD

SE 475-000

BOONE COUNTY SURVEYOR'S OFFICE

State Plane grid coordinates NAD83 (2011):

Corner 2: North: 1720521.22 East: 3125003.92 (U.S. survey feet)

Type of monument: Harrison, 4" disk 'Section Corner'

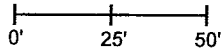
Depth: Flush with adjacent ground

Indiana tie card references:

IN02_T18NR1W25_62 IN02_T18NR1E30_54

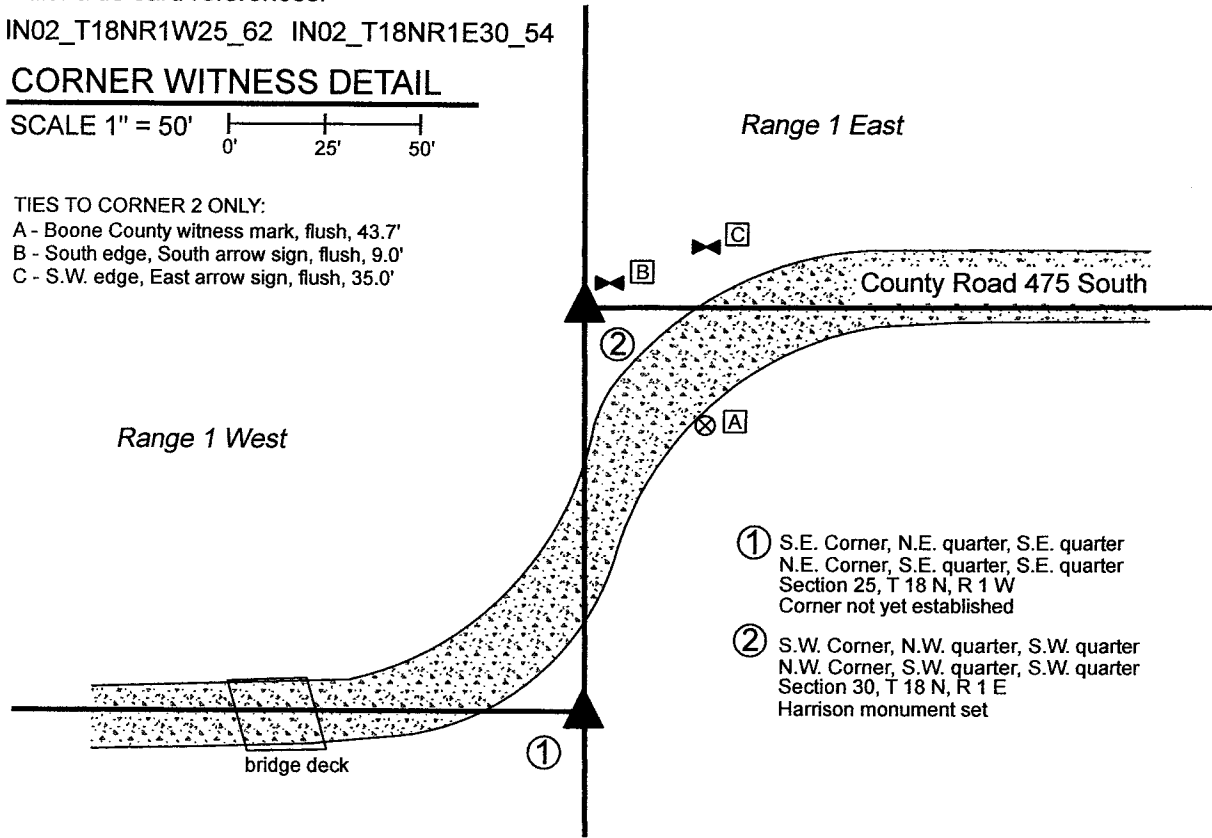
CORNER WITNESS DETAIL

SCALE 1" = 50'



TIES TO CORNER 2 ONLY:

- A - Boone County witness mark, flush, 43.7'
- B - South edge, South arrow sign, flush, 9.0'
- C - S.W. edge, East arrow sign, flush, 35.0'

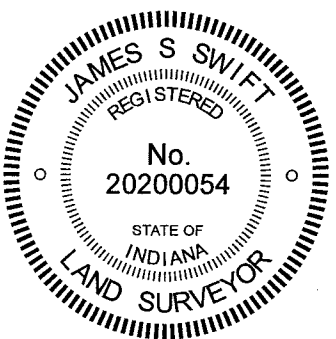


The Harrison Monument at Corner 2 was set in place of a stone found. The position of Corner 1 has not yet been precisely established as of the date of publication of this document.

A BCS record of November 27, 1858 states, with respect to Corner 1, "Rock 18.16.5 +". A BCS record of December 28-29, 1869 states, with respect to Corner 2, "Established 158-3/4 links North of the corner for Sect. 25. Set rock 9,6,4 +." A BCS tie card dated December 3, 1968 shows Corner 2 as a stone found and does not reference Corner 1.

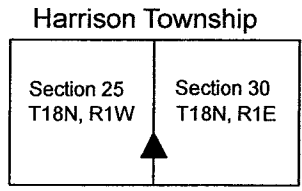
The stone shown on the 1968 tie card has been acknowledged as the corner since that time. The stone was fully exposed on October 16, 2020, and found to precisely match the dimensions stated on the 1889 record, being 9 inches tall, 6 inches N-S by 4 inches E-W with a distinct "+" mark etched in the top. The stone was removed and replaced with a Harrison monument in the same position on that date. Corner 1 has not yet been excavated and the position has not been fully established, though it is expected fall at or near 158-3/4 links (104.78 feet) south of Corner 2. It is noted that this distance is properly derived from original federal closing distances at the northwest and southwest corners of section 30.

Neither of these corners are original federal corners, but the stone (now Harrison) monument at Corner 2 represents the most reliable monument on this portion of the Second Principal Meridian. The corner is affirmed and documented at this time to provide a firm position from which to retrace the positions of adjacent corners to the north and south.



Kenneth E. Hedge
 Kenneth E. Hedge, County Surveyor

James S. Swift
 James S. Swift, IN LS 20200054
 January 6, 2020



SECTION CORNER RECORD

SE 500-050

BOONE COUNTY SURVEYOR'S OFFICE

State Plane grid coordinates NAD83 (CORS96):

North: 1719211.59 East: 3127354.40 (U.S. survey feet)

Type of monument: Harrison, 4" disk 'Section Corner'

Depth: six inches below adjacent gravel road surface

Indiana tie card references:

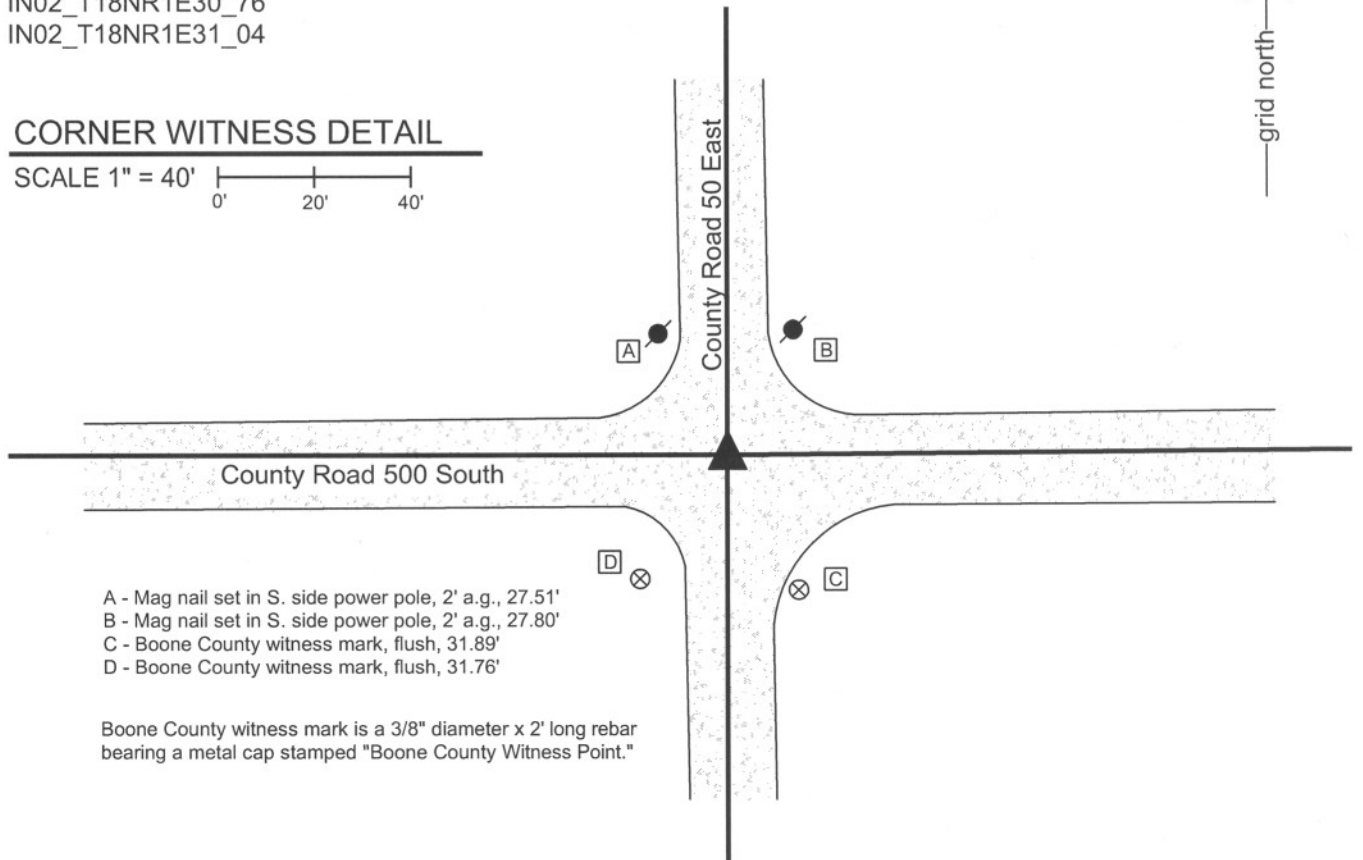
IN02_T18NR1E30_76

IN02_T18NR1E31_04



CORNER WITNESS DETAIL

SCALE 1" = 40'



- A - Mag nail set in S. side power pole, 2' a.g., 27.51'
- B - Mag nail set in S. side power pole, 2' a.g., 27.80'
- C - Boone County witness mark, flush, 31.89'
- D - Boone County witness mark, flush, 31.76'

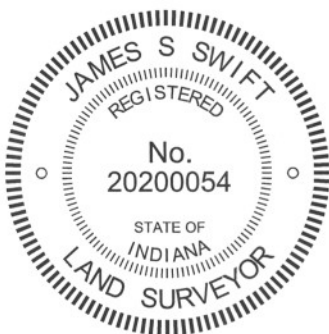
Boone County witness mark is a 3/8" diameter x 2' long rebar bearing a metal cap stamped "Boone County Witness Point."

The Harrison monument was set over a stone found.

A BCS record of December 28-29, 1869 states "Rock 16.16.9 marked +." No recent BCS tie cards were found referencing this corner.

This corner was excavated on March 7, 2011. Prior to excavation a 5/8 inch diameter rebar with a red plastic cap, the markings on which were not legible, was found at 3 inches below the surface of the road. Excavation revealed a stone found at 18 inches deep. With 12 inches of the stone exposed, it measured 17 inches N-S by 9 inches E-W with a clearly visible etched "+" mark on the west side. The stone was vertical, embedded in the clay layer below the road, protruding approximately 2 inches out of the clay into the bottom of the road bed. The full height of the stone was not measured, though with 12 inches exposed the stone remained stable in the clay. The stone was accepted as being the record stone from the 1869 record and was held as marking the corner. The stone was left in place and the top 3 inches were encased in concrete. A Harrison monument was set over the top, high point which is coincident with the approximate top, center. The rebar was removed during excavation. The rebar was 1 foot long and had been 1.4 feet south and 0.35 foot west of the point on the stone held as the corner.

This corner was originally established as a wood post in June, 1820.



Kenneth E. Hedge, County Surveyor

James S. Swift, IN LS 20200054
March 1, 2012

Harrison
Township

Section 30
T18N, R1E

Section 31
T18N, R1E

PHOTOGRAPHIC DOCUMENTATION

Date of photography: March 7, 2011

View of the stone as first exposed.
A piece of the top of the stone was broken off during excavation. That piece is visible in this photo but is missing in the photo below.



View of the stone from above and west showing the etched mark on the west side of the stone.



View from the south, looking across the stone and north along County Road 50 East.



View from the west, looking across the stone and east along County Road 500 South.



For details and documentation, refer to related sheet "Section Corner Record."

SECTION CORNER RECORD

BOONE COUNTY SURVEYOR'S OFFICE

SE 500-100

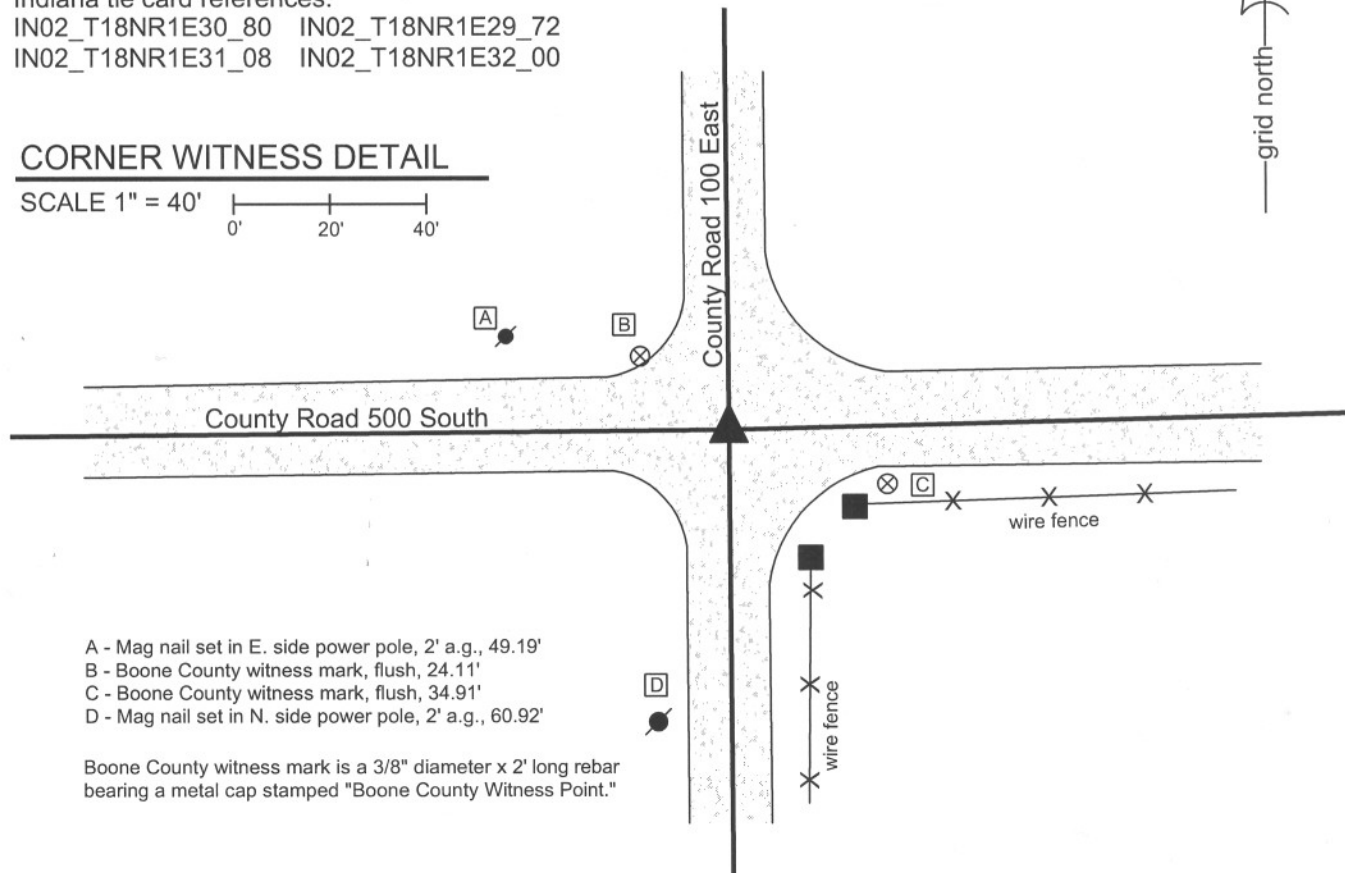
State Plane grid coordinates NAD83 (CORS96):
 North: 1719232.36 East: 3130012.93 (U.S. survey feet)

Type of monument: Harrison, 4" disk 'Section Corner'
 Depth: six inches below adjacent gravel road surface

Indiana tie card references:
 IN02_T18NR1E30_80 IN02_T18NR1E29_72
 IN02_T18NR1E31_08 IN02_T18NR1E32_00

CORNER WITNESS DETAIL

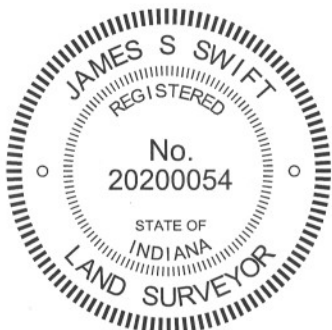
SCALE 1" = 40'



- A - Mag nail set in E. side power pole, 2' a.g., 49.19'
- B - Boone County witness mark, flush, 24.11'
- C - Boone County witness mark, flush, 34.91'
- D - Mag nail set in N. side power pole, 2' a.g., 60.92'

Boone County witness mark is a 3/8" diameter x 2' long rebar bearing a metal cap stamped "Boone County Witness Point."

The Harrison monument was set over a stone found.
 A BCS record of August 19-20, 1867 states "Set Rock 17.12.8." A BCS tie card dated May 5, 1992 shows the corner as an iron pin found.
 This corner was excavated on March 1, 2011. Prior to excavation a 1/2 inch diameter rebar was found at 2 inches deep. Excavation revealed a stone found at 15 inches deep. With the top 11 inches of the stone exposed, it measures approximately 12 inches E-W by 6 inches N-S and remains entirely stable, embedded in the clay layer below the road. The top of the stone protruded approximately 3 inches out of the clay layer in the base of the road bed. No specific marking were found, nor were any noted in the 1867 record. This stone was accepted as being the stone described in the 1867 record and was held as marking the corner. The stone was left in place. The top 10 inches of the stone were encased in concrete and a Harrison monument was set over the top, center of the stone. The rebar, removed during excavation, had been one foot north of the stone.
 This corner was originally established as a wood post in June, 1820.



Kenneth E. Hedge
 Kenneth E. Hedge, County Surveyor

James S. Swift
 James S. Swift, IN LS 20200054
 March 1, 2012

Harrison Township	Perry Township
Section 30 T18N, R1E	Section 29 T18N, R1E
Section 31 T18N, R1E	Section 32 T18N, R1E

PHOTOGRAPHIC DOCUMENTATION

Date of photography: March 7, 2011

View of the stone as first exposed.



View of the stone from above and west.



View from the west, looking across the stone and east along County Road 500 South.



View of the stone from above and north.



View of the stone from above and east.



For details and documentation, refer to related sheet "Section Corner Record."