

SECTION CORNER RECORD

SE 300-000

BOONE COUNTY SURVEYOR'S OFFICE

State Plane grid coordinates NAD83 (2011):

Corner 1: North: 1729684.83 East: 3124928.56 (U.S. survey feet)

Corner 2: North: 1729838.60 East: 3124927.45 (U.S. survey feet)

Corner 1: 5/8 inch diameter rebar, 24-inches long with aluminum cap stamped "Boone County Surveyor", 11" below grade

Corner 2: Harrison, 4" disk 'Section Corner', flush

Indiana tie card references:

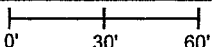
IN02_T18NR1E18_72 IN02_T18NR1W13_80

IN02_T18NR1W24_08 IN02_T18NR1E19_00

① S.E. Corner, Section 13
N.E. Corner, Section 24
T 18 N, R 1 W

② S.W. Corner, Section 18
N.W. Corner, Section 19
T 18 N, R 1 E

CORNER WITNESS DETAIL

SCALE 1" = 60' 

A - Wood post, 0.98' N.W. of Harrison at corner 2

Distance between monuments:
233 links = 158.44 feet

The Harrison monument at Corner 2 was set in place of a stone found. The rebar with cap at Corner 1 was set on the meridian line, as defined by Corner 2 and the standard corner 1/2 mile north, at a point 233 links from Corner 2. Both of these corners are addressed in BCS records of March 30, 1874. The record of that date pertaining to Corner 1 states "Reest. from trees. Rock 9.5 1/2.5 +." The record of that date pertaining to Corner 2 states, "Reestablished from roots of Beech. Set a Rock 16,13,4 to 7 marked +. Is 233 links North of corner, Sections 13 & 24." No recent BCS tie cards were found referencing these corners.

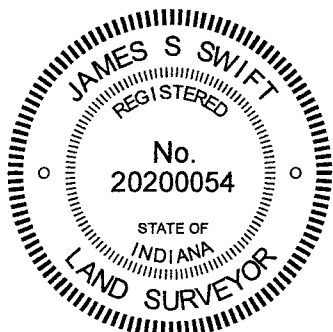
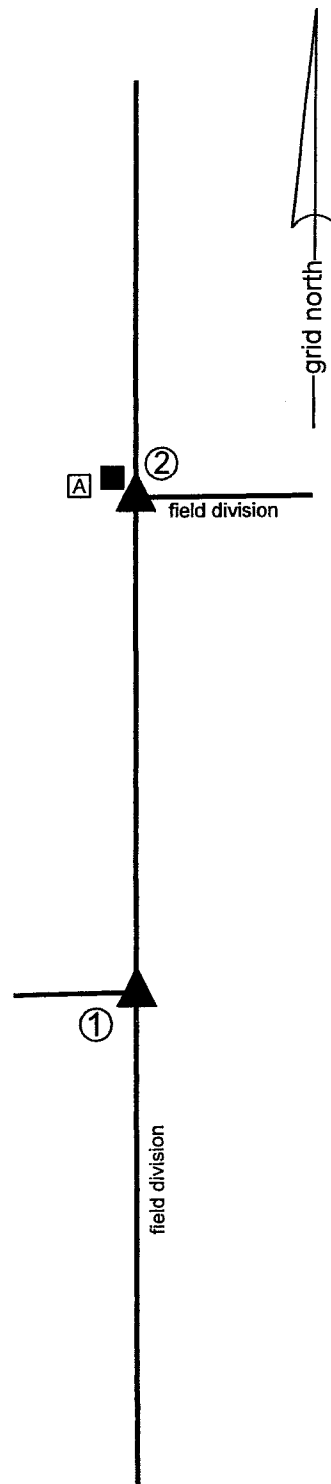
Both corners were excavated on March 10, 2021. Prior to excavation, a wood post was observed standing at the intersection of field divisions to the north, south and east. No other evidence of the corners was visible. It was observed that the position of the wood corner post was almost precisely on the westerly prolongation of a line connecting the north quarter corner and northeast corner of section 19.

Excavation in the vicinity of the wood post revealed the base of another, presumably older, wood corner post east of and adjacent to the standing post. The stone described in the 1874 record for Corner 2 was found at 8 inches deep, immediately south of and adjacent to the base of the old wood post. The stone was vertical and oriented in cardinal directions, as found, with the top of the rock being flat, horizontal and clearly oriented in the east-west dimension. The east edge of the stone was found to be approximately 5 inches wide while the west edge of the stone was 7 inches wide. The stone measured 13 inches east west by 14 inches tall, as measured vertically, and 16 inches, as measured diagonally. No marks were observed on the top of the stone. However, when the stone was removed from the ground, a distinct etched "+" mark was clearly visible on the bottom of the stone. Typically, these marks are found at the top or sides of the stones. Either the stone was installed upside-down in 1874 or the stone has been removed and replaced in that orientation. No other evidence that it may have been moved or disturbed was observed.

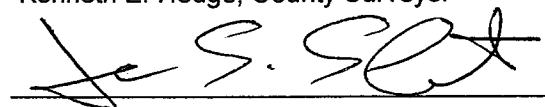
Excavation of a position 233 links (158.44 feet) south of the found stone revealed another stone and the base of an old cedar corner post. The base of the post was found at 11 inches deep, at precisely 233 links south of the stone found at Corner 2. The found stone was 1 foot further south and slightly east. This stone was found at the surface of the field. It did not match the dimensions called in the 1874 record and appeared that it could be easily moved. The stone called as marking Corner 1 in the 1874 record was not found. It is noted that it was rather small and that the base of the post was found several inches deeper in the field than was the stone at Corner 1.

It is also noted that the original federal notes state that Corner 2 was established 234 links north of Corner 1, but the 1874 record specifically stipulates a separation of 233 links, which precisely matches the evidence found. The stone at Corner 2 was removed and replaced with a Harrison monument on March 10, 2021. The precise position of Corner 1 was established on the southerly prolongation of the line connecting Corner 2 and the east quarter corner of section 13 (See BCS Corner SW 250-000) at a distance of 233 links or 158.44 feet. The position falls adjacent to and east of the base of the 8-inch diameter cedar post and in-line with the north-south field division. A 24-inch length of 5/8-inch diameter rebar with metal cap stamped 'Boone County Surveyor' was set 11 inches deep on March 12, 2021.

Corner 1 was originally established as a wood post in 1819. Corner 2 was originally established as a wood post in 1820.




Kenneth E. Hedge, County Surveyor


James S. Swift, IN LS 20200054

March 17, 2021

Center
Township

Section 13 T18N, R1W	Section 18 T18N, R1E
-------------------------	-------------------------

Harrison
Township

Section 24 T18N, R1W	Section 19 T18N, R1E
-------------------------	-------------------------

SECTION CORNER RECORD

SE 300-050

BOONE COUNTY SURVEYOR'S OFFICE

State Plane grid coordinates NAD83 (CORS96):

North: 1729853.27 East: 3127279.46 (U.S. survey feet)

Type of monument: Harrison, 4" disk 'Section Corner'

Depth: flush with the adjacent ground


Indiana tie card references:

IN02_T18NR1E18_76

IN02_T18NR1E19_04

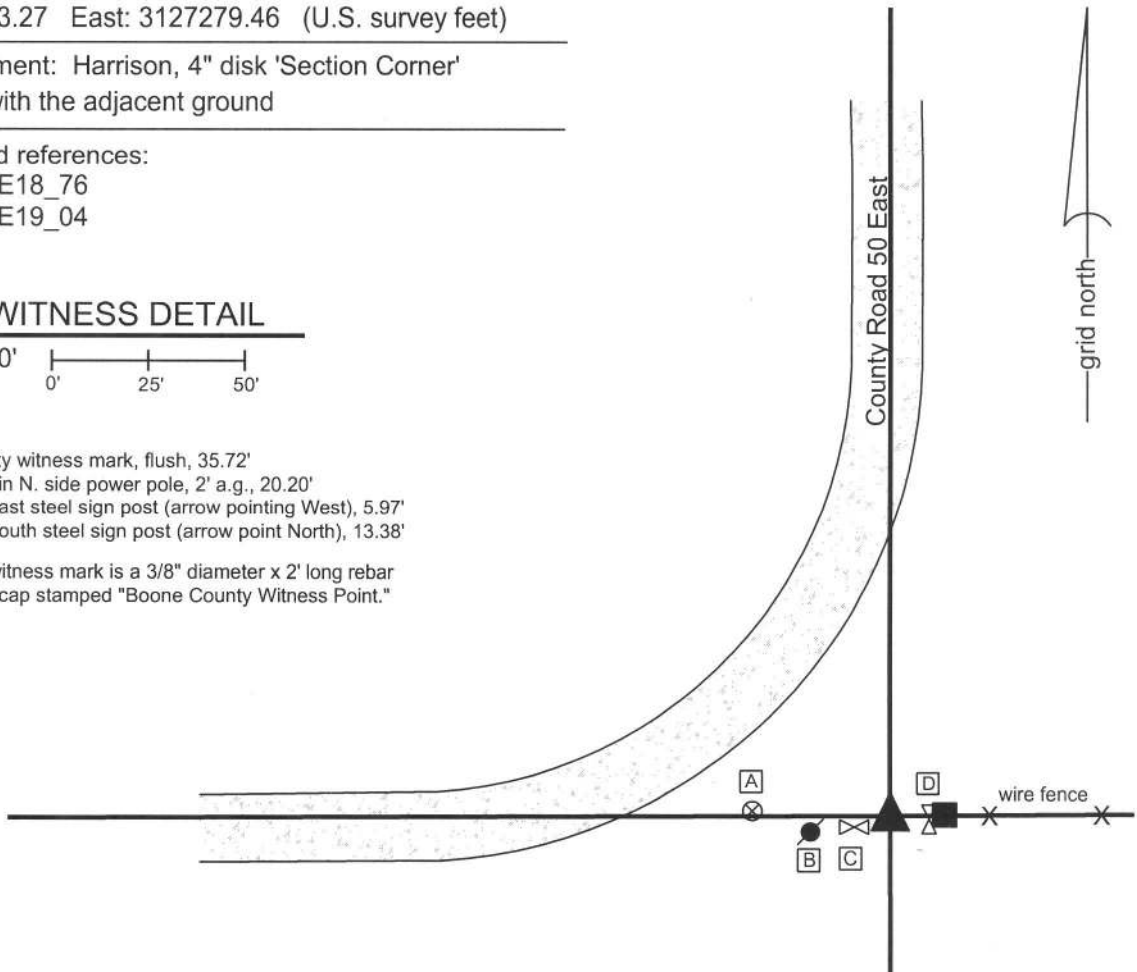
CORNER WITNESS DETAIL

SCALE 1" = 50'



- A - Boone County witness mark, flush, 35.72'
- B - Mag nail set in N. side power pole, 2' a.g., 20.20'
- C - East edge, east steel sign post (arrow pointing West), 5.97'
- D - South edge, south steel sign post (arrow point North), 13.38'

Boone County witness mark is a 3/8" diameter x 2' long rebar bearing a metal cap stamped "Boone County Witness Point."



The Harrison monument was set in a position determined by local evidence.

A BCS record of November 13, 1912 states "found rock set." No recent BCS tie cards were found referencing this corner. An undated card which has been available in this office for many years purports to reference this corner, but the geometry of the road as shown on the card does not fit with the physical conditions at the corner. Investigation of the field notes associated with this card revealed the fact that the corner to which the card was intended to reference is the NE corner of NW 1/4, of the SE 1/4 of section 19.


Excavation was performed at this corner on May 14, 2013. No monuments were found marking the corner prior to excavation, though significant local evidence of the corner was available in the form of the center of the road to the north and west and the presence of an end post at the westerly terminus of an old fence to the east. Excavation of an area 10 feet E-W by 12 N-S centered on the apparent location of the corner per the local evidence yielded no further evidence of the corner. A distinct vein of sand was found in the center of the hole between 2 and 3 feet deep.

The corner was established at 1 rod (16.5 feet) west of the adjacent wood end post, at the westerly prolongation of the fence to the east of said post, which point also falls at the southerly prolongation of the center of the county road to the north and the easterly prolongation of the center of the county road to the west. A Harrison monument was set within a vertical section of 12 inch diameter HDPE storm pipe, filled with concrete, at this point.

This corner was originally established as a wood post in 1820.




Kenneth E. Hedge, County Surveyor


James S. Swift, IN LS 20200054
February 5, 2015

Center
Township

Section 18
T18N, R1E

Harrison
Township

Section 19
T18N, R1E

SECTION CORNER RECORD

BOONE COUNTY SURVEYOR'S OFFICE

SE 300-100

State Plane grid coordinates NAD83 (CORS96):

North: 1729869.74 East: 3129924.20 (U.S. survey feet)

Type of monument: Harrison, 4" disk 'Section Corner'

Depth: six inches below adjacent gravel road surface

Indiana tie card references:

IN02_T18NR1E18_80

IN02_T18NR1E17_72

IN02_T18NR1E19_08

IN02_T18NR1E20_00

CORNER WITNESS DETAIL

SCALE 1" = 30'



A - Boone County witness mark, flush, 12.43'

B - Boone County witness mark, flush, 25.76'

C - Mag nail set in N. side power pole, 2' a.g., 64.05'

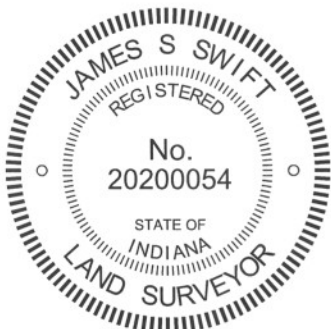
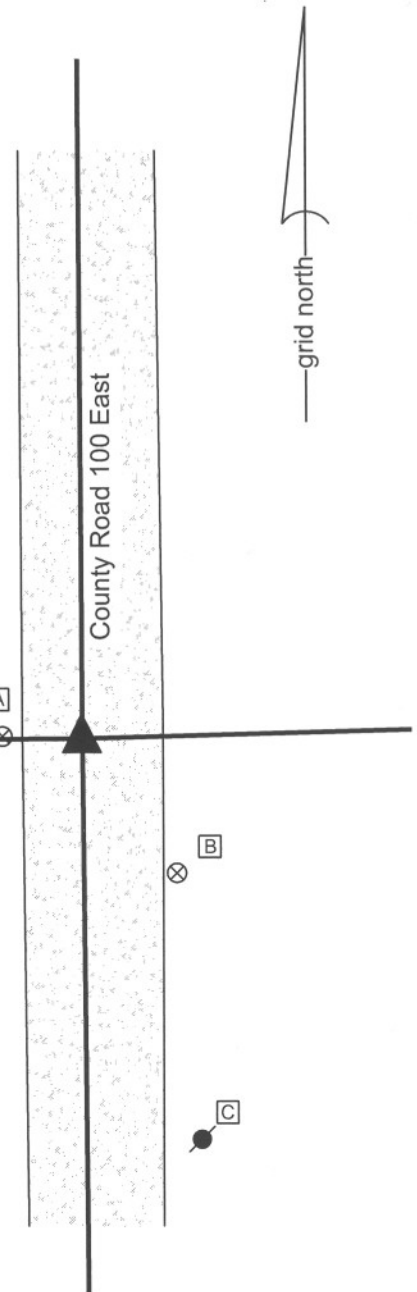
Boone County witness mark is a 3/8" diameter x 2' long rebar bearing a metal cap stamped "Boone County Witness Point."

The harrison monument was set in place of a railroad rail found.

No specific descriptions of this corner were found in the BCS Surveyor's Record. A BCS tie card dated May 1968 shows the corner and states "stone with + lying in sideditch."

This corner was excavated on February 28, 2011. Two vertical sections of railroad rail were found at 3 inches deep. One rail was 0.7 foot north and 0.7 foot west of the other rail. The one remaining distance tie reference from the 1968 tie card is a wood post on the west side of the road. The tie card shows the corner being 18 feet east of this post and 19 feet west of the post on the east side of the road. Neither rail fits with the tie to the post on the west, though the northwest of the two rails was at approximately 19 feet. The other rail was closer to 20 feet from the post. Excavation of an area 8 feet N-S by 7 feet E-W, approximately centered on the rails, yielded no further evidence. As the northwesterly of the two rails fit with one dimension shown on the tie card, albeit reversed from the orientation shown on the tie card, and was also more in line with the post, this rail was held as the corner. Both rails were removed during excavation and a harrison monument was set in the position of the northwesterly rail.

This corner was originally established as a wood post in June 1820.



Kenneth E. Hedge
 Kenneth E. Hedge, County Surveyor

James S. Swift
 James S. Swift, IN LS 20200054
 March 1, 2012

Center Twp	Section 18 T18N, R1E	Section 17 T18N, R1E
Harrison Twp	Section 19 T18N, R1E	Section 20 T18N, R1E

SECTION CORNER RECORD

SE 350-100

BOONE COUNTY SURVEYOR'S OFFICE

State Plane grid coordinates NAD83 (CORS96):

North: 1727214.59 East: 3129948.44 (U.S. survey feet)

Type of monument: Harrison, 4" disk 'Section Corner'

Depth: six inches below adjacent gravel road surface

Indiana tie card references:

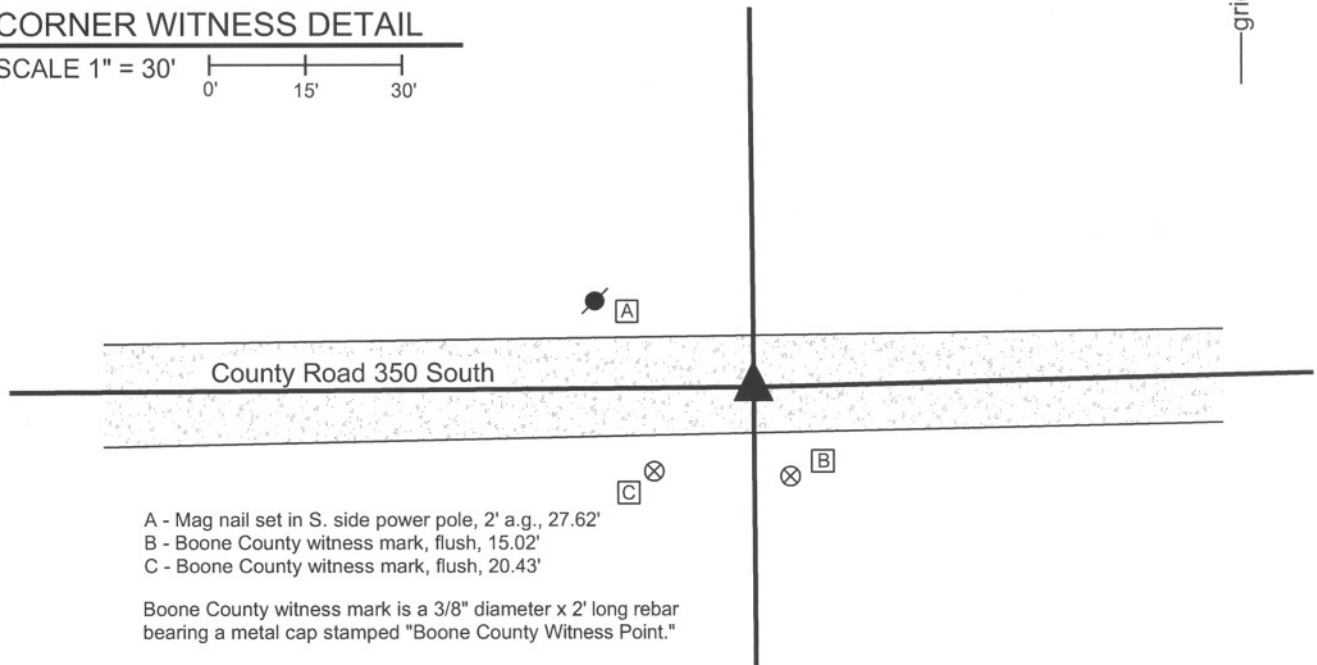
IN02_T18NR1E19_44

IN02_T18NR1E20_36



CORNER WITNESS DETAIL

SCALE 1" = 30'



- A - Mag nail set in S. side power pole, 2' a.g., 27.62'
- B - Boone County witness mark, flush, 15.02'
- C - Boone County witness mark, flush, 20.43'

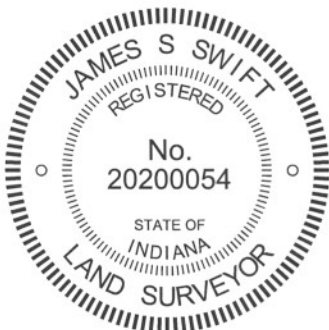
Boone County witness mark is a 3/8" diameter x 2' long rebar bearing a metal cap stamped "Boone County Witness Point."

The harrison monument was set in place of a railroad rail found.

A BCS record of June 18-19, 1866 states "Reestablished from stump of Ash and roots of Maple. Set Rock 12.9.8 marked +." A BCS tie card dated May, 1968 states "no stone."

This corner was excavated on February 28, 2011. Prior to excavation a vertical section of railroad rail was found in the center of the road at 1 inch deep. Excavation revealed another railroad rail fnd at a similar depth, 1.7 feet south of the first found rail. Excavation of an area 8' north, 5 feet south, 5 feet east and 6 feet west of the first found rail yielded no further evidence of the corner. The road bed is only approximately 10 inches deep in this area. It is noted that the road is slightly below the grade of the adjoining ground on the north side of the road, and slightly above the adjoining grade on the south side of the road. With such minimal road bed and being so close to the grade of the surrounding ground, it is reasonable to expect that the record stone may have been removed by road grading equipment in the past. The northerly of the two rails fit better with the local evidence in the form of the road, both in the immediate vicinity of the corner and as perceived along the longer lines of the road extended to the east and west. Both rails were removed during excavation and the northerly of the two rails was replaced with a harrison monument. Subsequently the harrison monument was removed by a crew of the Boone County Highway Department working on the road. A new harrison monument was set in the same position as the old harrison on June 3, 2011.

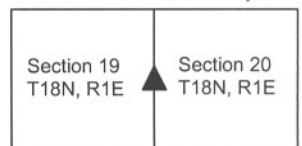
This corner was originally established as a wood post in June, 1820.



Kenneth E. Hedge
Kenneth E. Hedge, County Surveyor

James S. Swift
James S. Swift, IN LS 20200054
March 1, 2012

Harrison Township



SECTION CORNER RECORD

BOONE COUNTY SURVEYOR'S OFFICE

SE 400-000

State Plane grid coordinates NAD83 (2011):

Corner 1: North: 1724387.67 East: 3124968.43 (U.S. survey feet)

Corner 2: North: 1724511.75 East: 3124967.30 (U.S. survey feet)

Type of monument: Harrison, 4" disk 'Section Corner'

Depth: Flush with adjacent ground

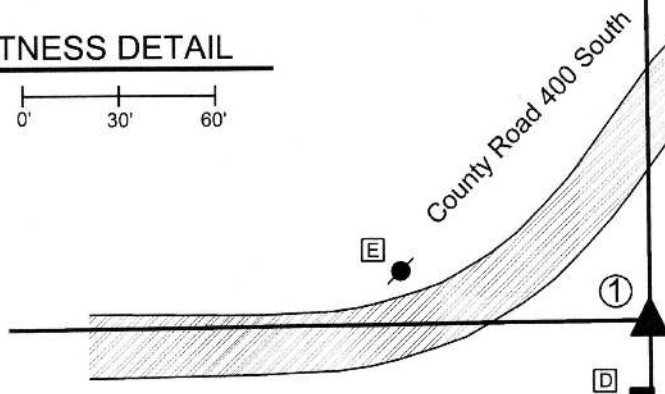
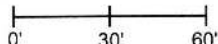
Indiana tie card references:

IN02_T18NR1W24_80 IN02_T18NR1E14_72

IN02_T18NR1W25_08 IN02_T18NR1E23_00

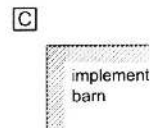
CORNER WITNESS DETAIL

SCALE 1" = 60'



- A - Mag nail set in S. side power pole, 2' a.g. 185.0' to corner 1, 65.0' to corner 2
- B - Mag nail set in S. side power pole, 2.5' a.g. 143.8' to corner 1, 51.6' to corner 2
- C - N.W. corner of foundation, metal implement bar 88.8' to corner 1, 200.2' to corner 2
- D - Mag nail set in N. side, wood post, 0.8' a.g. 22.2' to corner 1, 146.1' to corner 2
- E - Mag nail set in E. side power pole, 2' a.g. 77.2' to corner 1, 131.3' to corner 2

Branaman Barn and Implement lot



The Harrison monument at corner 1 was set over a stone found. The Harrison monument at corner 2 was set at a position calculated relative to corner 1. A BCS record dated October 12-17, 1857 states, with respect to corner 1, "Reestablished. Rock 15x17." A BCS record dated July 21, 1900 states, with respect to corner 1, "Re-estab.; set rock 15x17 +. Small Rocks beneath" A BCS record dated June 18-19, 1866 states, with respect to corner 2, "Found from Burr Oak (down)." A BCS record dated November 26-27, 1868 states, with respect to corner 2, Found 188 [links] North corner Sects West, and is on East side of a Hickory."

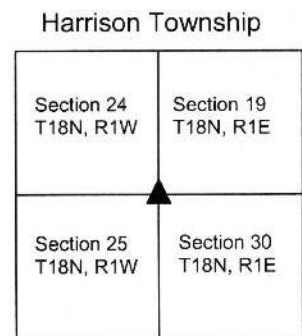
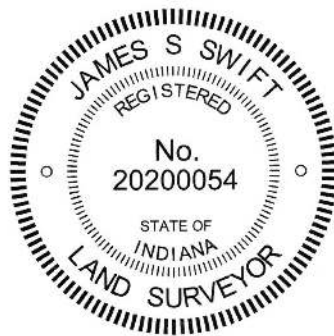
No recent BCS tie cards were found referencing these corners.

Excavation was performed at these corners on February 10, 2015. Prior to excavation, Harrison monuments were found ostensibly marking each corner. The two monuments were found to be located exactly 188 links (124.08 feet) apart from each other. The source of the monuments is not known, though it is likely that they were set by representatives of the former Anderson & Associates in approximately 2005. Excavation at corner 1 yielded a stone found at 8 inches deep. The stone matched the 15x17 inch dimensions called in the 1857 and 1900 record. As found, the stone was mostly vertical, though leaning slightly to the northwest. A piece of wire was found partially wrapped around the stone. The wire appeared to be serving a purpose of holding the stone in a vertical orientation, perhaps while the surrounding ground was refilled. The stone fit well with the evidence of the line to the west, in the form of the center of County Road 400 South, and was slightly east of the old end post to the south. No specific marks were found on the stone, though it is noted that the stone had a rough surface and marks are often difficult to detect on such rocks. A smaller rock (5x7x8) was found nearby, but not underneath the stone. A possible explanation for the fact that the smaller rock was not underneath the primary stone would be that at some point excavation activities in this area disturbed the ground. Perhaps the primary stone and smaller rocks were all removed and only the primary stone replaced. In the field, this possibility appeared to be supported by the curious piece of wire which appeared to have held the stone in a vertical orientation at some point. Excavation in the vicinity of corner 2 yielded no further evidence of that corner. The 188 link offset, being the original federal offset and confirmed by the BCS records, was held for the separation between the corners. Corner 2 was established on the range line, as defined by the stone at corner 1 and a wood post at or near to the the standard corner 1/2 mile north. A Harrison monument was set at this position.

Corner 1 was originally established as a wood post in 1819. Corner 2 was originally established as a wood post in 1820.

Kenneth E. Hedge
 Kenneth E. Hedge, County Surveyor

James S. Swift
 James S. Swift, IN LS 20200054
 March 28, 2016



SECTION CORNER RECORD

SE 400-050

BOONE COUNTY SURVEYOR'S OFFICE

State Plane grid coordinates NAD83 (CORS96):

North: 1724530.87 East: 3127305.00 (U.S. survey feet)

Type of monument: Harrison, 4" disk 'Section Corner'

Depth: One inch below adjacent road surface

Indiana tie card references:

IN02_T18NR1E19_76

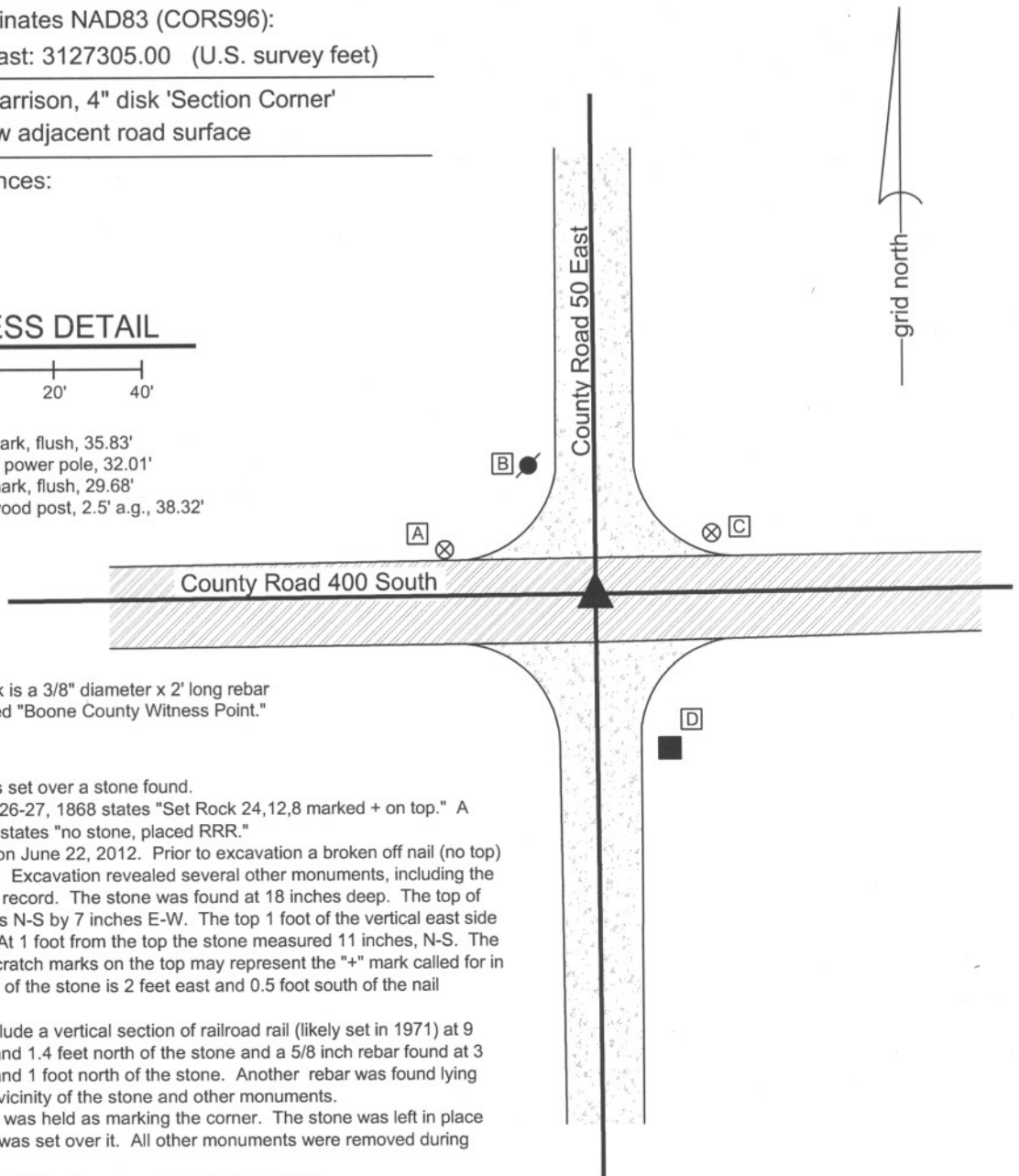
IN02_T18NR1E30_04

CORNER WITNESS DETAIL

SCALE 1" = 40'



- A - Boone County witness mark, flush, 35.83'
- B - Mag nail set in S.W. side power pole, 32.01'
- C - Boone County witness mark, flush, 29.68'
- D - Mag nail set in W. side wood post, 2.5' a.g., 38.32'



Boone County witness mark is a 3/8" diameter x 2' long rebar bearing a metal cap stamped "Boone County Witness Point."

The harrison monument was set over a stone found.

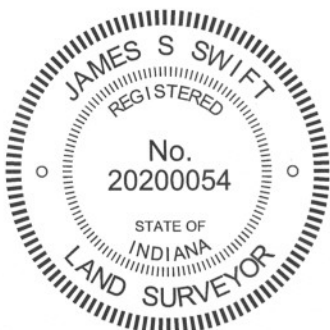
A BCS record of November 26-27, 1868 states "Set Rock 24,12,8 marked + on top." A BCS tie card June 25, 1971 states "no stone, placed RRR."

This corner was excavated on June 22, 2012. Prior to excavation a broken off nail (no top) was found at 2 inches deep. Excavation revealed several other monuments, including the stone described in the 1868 record. The stone was found at 18 inches deep. The top of the stone measured 9 inches N-S by 7 inches E-W. The top 1 foot of the vertical east side of the stone was exposed. At 1 foot from the top the stone measured 11 inches, N-S. The rock is of a soft material. Scratch marks on the top may represent the "+" mark called for in the record. The top, center of the stone is 2 feet east and 0.5 foot south of the nail originally found.

Other monuments found include a vertical section of railroad rail (likely set in 1971) at 9 inches deep, 1.8 feet west and 1.4 feet north of the stone and a 5/8 inch rebar found at 3 inches deep, 1.5 feet west and 1 foot north of the stone. Another rebar was found lying horizontal in the immediate vicinity of the stone and other monuments.

The top, center of the stone was held as marking the corner. The stone was left in place and a harrison monument was set over it. All other monuments were removed during excavation.

This corner was originally established as a wood post in June, 1820.



Kenneth E. Hedge

 Kenneth E. Hedge, County Surveyor

James S. Swift

 James S. Swift, IN LS 20200054
 January 15, 2013

Harrison Township

Section 19
T18N, R1E

Section 30
T18N, R1E

PHOTOGRAPHIC DOCUMENTATION

Date of photography: June 22, 2013

View of the stone as first exposed.
View from above and south.



View of the stone more fully exposed.
View from the above and east.



View from the east, looking across the stone
and west along County Road 400 South.



View from the north, looking across the stone
and south along County Road 50 East.



For details and documentation, refer to related sheet "Section Corner Record."

SECTION CORNER RECORD

SE 400-100

BOONE COUNTY SURVEYOR'S OFFICE

State Plane grid coordinates NAD83 (CORS96):

North: 1724556.97 East: 3129967.83 (U.S. survey feet)

Type of monument: Harrison, 4" disk 'Section Corner'

Depth: One inch below adjacent road surface

Indiana tie card references:

IN02_T18NR1E19_80 IN02_T18NR1E20_72

IN02_T18NR1E30_00 IN02_T18NR1E29_00

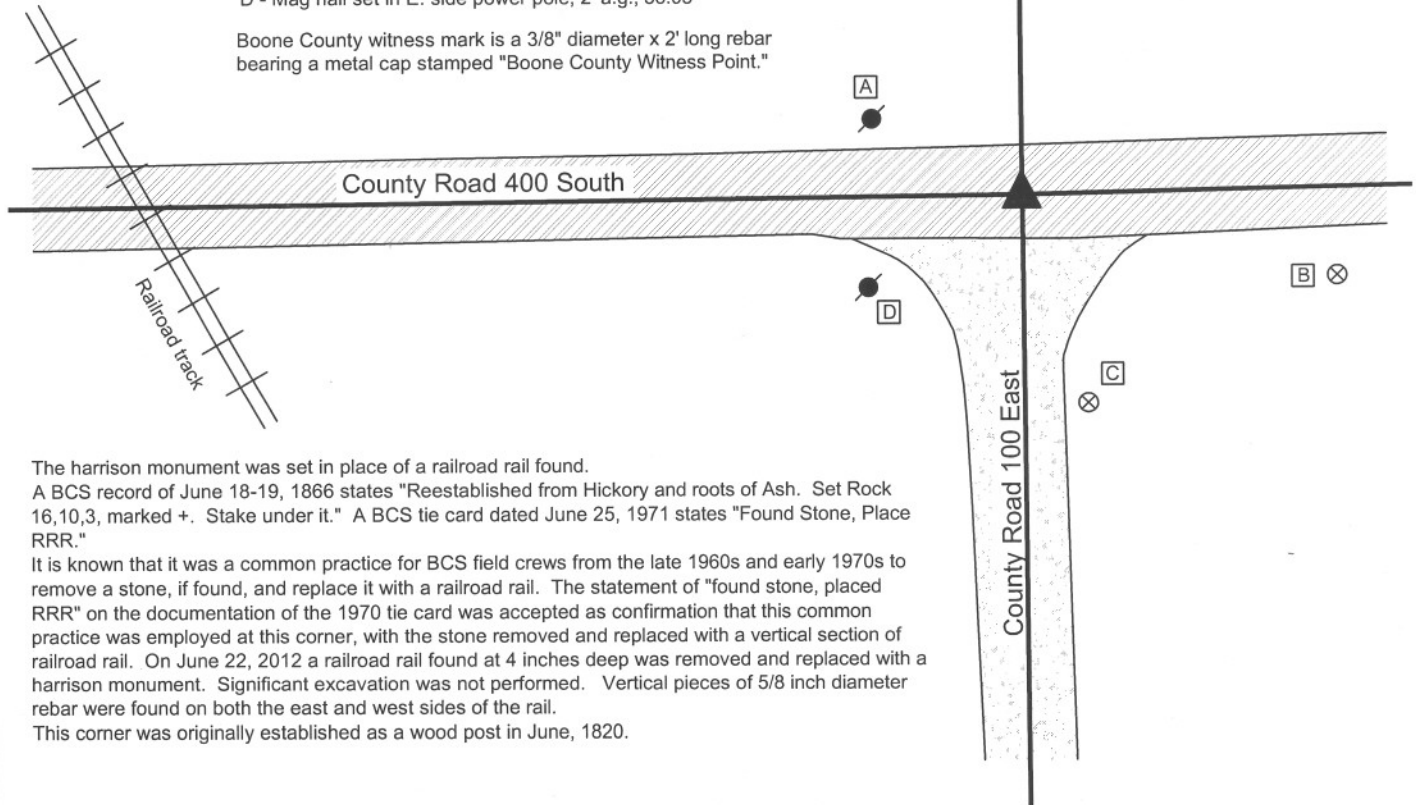
CORNER WITNESS DETAIL

SCALE 1" = 40'



- A - Mag nail set in S. side power pole, 2' a.g., 34.10'
- B - Boone County witness mark, flush, 68.01'
- C - Boone County witness mark, flush, 45.23'
- D - Mag nail set in E. side power pole, 2' a.g., 36.03'

Boone County witness mark is a 3/8" diameter x 2' long rebar bearing a metal cap stamped "Boone County Witness Point."

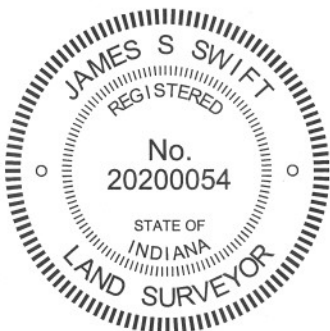


The harrison monument was set in place of a railroad rail found.

A BCS record of June 18-19, 1866 states "Reestablished from Hickory and roots of Ash. Set Rock 16,10,3, marked +. Stake under it." A BCS tie card dated June 25, 1971 states "Found Stone, Place RRR."

It is known that it was a common practice for BCS field crews from the late 1960s and early 1970s to remove a stone, if found, and replace it with a railroad rail. The statement of "found stone, placed RRR" on the documentation of the 1970 tie card was accepted as confirmation that this common practice was employed at this corner, with the stone removed and replaced with a vertical section of railroad rail. On June 22, 2012 a railroad rail found at 4 inches deep was removed and replaced with a harrison monument. Significant excavation was not performed. Vertical pieces of 5/8 inch diameter rebar were found on both the east and west sides of the rail.

This corner was originally established as a wood post in June, 1820.



Kenneth E. Hedge
Kenneth E. Hedge, County Surveyor

James S. Swift
James S. Swift, IN LS 20200054
January 15, 2013

Harrison Township

Section 19 T18N, R1E	Section 20 T18N, R1E
Section 30 T18N, R1E	Section 29 T18N, R1E