

SECTION CORNER RECORD

SE 200-000

BOONE COUNTY SURVEYOR'S OFFICE

State Plane grid coordinates NAD83 (2011):

North: 1734990.59 East: 3124895.92 (U.S. survey feet)

North: 1735188.75 East: 3129897.92 (U.S. survey feet)

Type of monument: Harrison, 4" disk 'Section Corner'

Depth: One inch below adjacent road surface

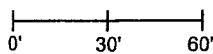
Indiana tie card references:

IN02_T18NR1W12_80 IN02_T18NR1E07_72

IN02_T18NR1W13_08 IN02_T18NR1E18_00

CORNER WITNESS DETAIL

SCALE 1" = 60'

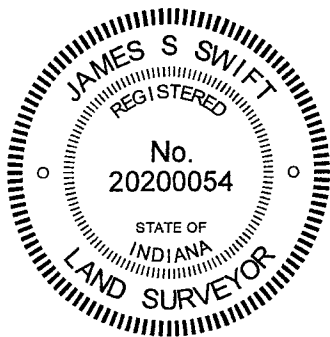
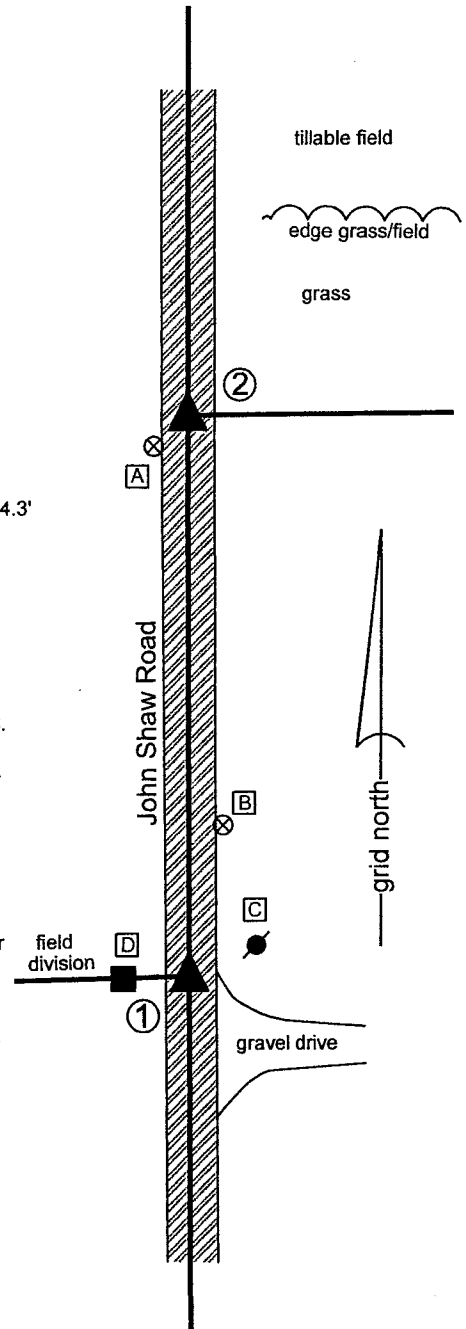


- A - Boone County witness mark, flush
165.1' to corner 1, 14.5' to corner 2
- B - Boone County witness mark, flush
48.1' to corner 1, 127.9' to corner 2
- C - Mag nail set in W. side power pole, 2' a.g.
21.3' to corner 1, 165.4' to corner 2
- D - Mag nail set in E. side wood end post, 2' a.g.
20.0' feet to corner 1, 175.7' to corner 2

- ① S.E. Corner, Section 12
N.E. Corner, Section 13
T 18 N, R 1 W
- ② S.W. Corner, Section 7
N.W. Corner, Section 18
T 18 N, R 1 E

Distance between monuments: 174.3'
Original federal closing distance:
264 links = 174.24'

The Harrison monument at Corner 1 was set in place of a vertical section of railroad rail found. The Harrison monument at Corner 2 was set adjacent to the position of a rebar found. A BCS record of May 23, 1866 states, with respect to Corner 1, "Reest. found by measure 264 links S. of cor. of Sects 7 & 18 found stumps of trees. Rock 22.12.9 + on W. side. No specific descriptions of Corner 2 were found in the BCS Surveyor's Record beyond the original establishment of the corner as a wood post in 1820, 264 links N. of the wood post set at Corner 1 in 1819. A BCS tie card dated February 26, 1992 shows Corner 1 as a railroad rail found. Excavation was performed at Corner 1 on May 6, 2013. Prior to excavation, a nail was found at 4 inches below grade in the center of the road, in-line with a wood post on the west side of the road. Excavation revealed a vertical section of railroad rail found at 7 inches deep, directly below the nail. Further excavation to 2.5 feet north, west and south and 4 feet east of the rail did not reveal more evidence of the corner. The stone called in the 1866 record was not found. A possible explanation for this may be that the stone was found and removed when the rail was set. No record was found to indicate when the rail was set, though it was most likely set in the late 1960s or early 1970s and it is known that BCS crews of that era often removed stones, if found, and replaced them with rails. Another explanation may be that, due to mixture of sand and rocky material found at the bottom of the road bed, this area appears that it was wet during the wagon road era and the stone may have been removed when the road bed was built up. The rail was accepted as the best available evidence of Corner 1 and replaced with a Harrison monument in the same position on May 7, 2013, Excavation at Corner 2 on May 7, 2013 revealed a one-foot length of 5/8 inch rebar at 6 inches deep and a fragment of wood stake found near the bottom of the road bed. The fragments of the stake were ill defined with respect to precise position. Excavation of a five-foot square area centered on the rebar did not reveal further evidence of this corner. The rebar, being at the 264 link offset distance from the rail at Corner 1, was held to define the north-south dimension of Corner 2. A mag spike was set in place of the rebar temporarily on May 7, 2013. This spike was replaced with a Harrison monument set on the range line as defined by Corner 1 and the east quarter corner of section 12 (see BCS Corner SW 150-000) on July 14, 2016. This position is 0.1 foot west of the position of the rebar originally found. Corner 1 was originally set as a wood post in 1819. Corner 2 was originally set as a wood post in 1820.



Kenneth E. Hedge
Kenneth E. Hedge, County Surveyor

James S. Swift
James S. Swift, IN LS 20200054

March 9, 2021

Center Township

Section 12 T18N, R1W	Section 7 T18N, R1E
Section 13 T18N, R1W	Section 18 T18N, R1E

SECTION CORNER RECORD

SE 200-050

BOONE COUNTY SURVEYOR'S OFFICE

State Plane grid coordinates NAD83 (2011):

North: 1735174.22 East: 3127241.77 (U.S. survey feet)

Type of monument: Harrison, 4" disk 'Section Corner'

Depth: Four inches above surrounding ground

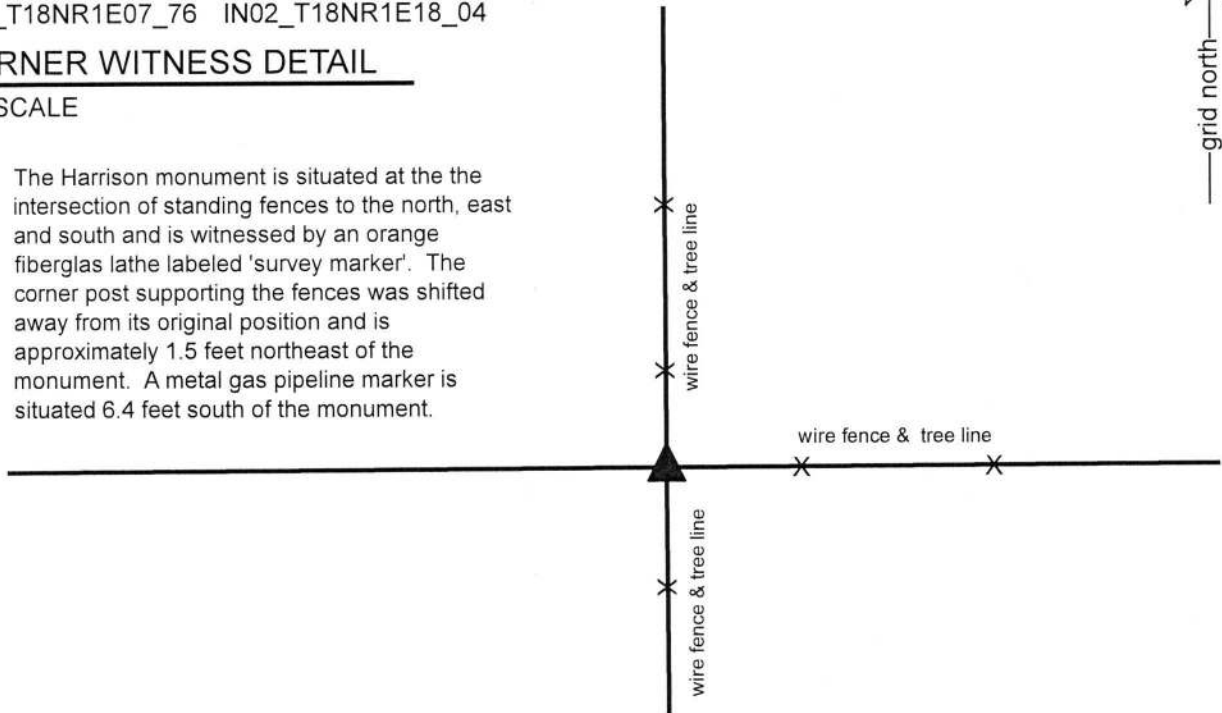
Indiana tie card references:

IN02_T18NR1E07_76 IN02_T18NR1E18_04

CORNER WITNESS DETAIL

NO SCALE

The Harrison monument is situated at the the intersection of standing fences to the north, east and south and is witnessed by an orange fiberglas lathe labeled 'survey marker'. The corner post supporting the fences was shifted away from its original position and is approximately 1.5 feet northeast of the monument. A metal gas pipeline marker is situated 6.4 feet south of the monument.

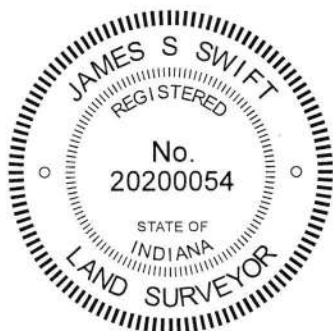


The Harrison monument was set in place of the base of a wood corner post found.


A BCS record dated November 8, 1912, states, with respect to this corner, 'Found rock at corner + root of Oak here.' No recent BCS tie cards were found referencing this corner.

Excavation was performed at this corner on September 24, 2019. Prior to excavation, an ancient wood corner post with fence to the north, south and east was found providing evidence of the corner. The post fit within 5 feet of a calculated position for the corner based the relative positions of the section corners to the east and west as computed by single proportional method with respect to the distances reported by the original federal surveyors. Numerous rocks were found in the immediate vicinity of the corner, most lying in a loose pile to the northeast of the post. Probing and manual excavation around the post revealed no stones which could be positively identified as representing purposely set corner stones. Evidence of a gas pipeline was observed immediately south of the corner. The standing fencing to the south of the post is newer than the fencing to the east and north, presumably due to the old fence being cut in association with the installation of the gas line. The old fence to the south is yet attached to the post, though cut-off a few inches from the post. It does not appear that the gas line installation disturbed the ancient corner post. The post was accepted as providing the best available evidence of the corner. The above ground portion of the post was rotted at ground level and separated from the base of the post, which remains in the ground. Several wires were cut at the bottom of the fence and the above ground portion of the post was shifted approximately 1.5 foot to the northeast, though left in a condition in which it continued to stand vertically, supporting the attached fencing. The base of the post, in-ground, was exposed to approximately two feet deep. The exposed portion of the base of the post was encased in concrete and a Harrison monument was set directly over the base of the post.

This corner was originally established as a wood post in 1820.




Kenneth E. Hedge, County Surveyor


James S. Swift, IN LS 20200054

October 15, 2019

Center
Township

Section 7
T18N, R1E

Section 18
T18N, R1E

SECTION CORNER RECORD

SE 200-100

BOONE COUNTY SURVEYOR'S OFFICE

State Plane grid coordinates NAD83 (NSRS 2007):

North: 1735188.75 East: 3129897.92 (U.S. survey feet)

Type of monument: Harrison, 4" disk 'Section Corner'

Depth: One inch below adjacent road surface

Indiana tie card references:

IN02_T18NR1E07_80 IN02_T18NR1E08_72

IN02_T18NR1E17_00 IN02_T18NR1E18_08

CORNER WITNESS DETAIL

SCALE 1" = 40'

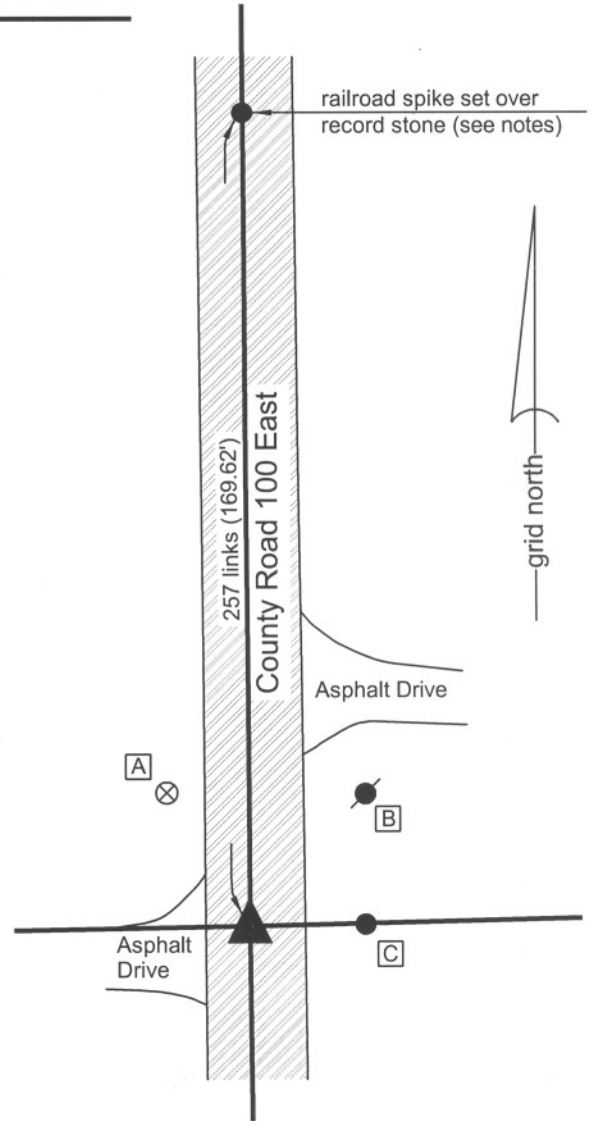


A - Boone County witness mark, flush, 32.64'

B - Mag nail set in S. side power pole, 2.0' a.g., 35.0'

C - 5/8" capped rebar found (Carter), flush, 23.96'

Boone County witness mark is a 3/8" diameter x 2' long rebar bearing a metal cap stamped "Boone County Witness Point."



The harrison monument was set in a position calculated upon the relative positions of two stones to the north.

This corner is not specifically described in the BCS "Surveyor's Record." However, sufficient information exists in the record to reconstruct the position of the corner relative to two stones found. A BCS record of February 12 mentions an intermediate corner (corner 4 of section 8) north of the subject corner. This corner is also referenced as a terminal point for measurements in a BCS record of March 13, 1871. A BCS record of June 13, 20, 21, 1881 describes the stone set at the quarter corner one-half mile to the north (corner H of section 8.) and records measurements from said corner (H) to the aforementioned intermediate corner (4) and to the subject corner (corner G of section 8.) It also records a measurement from the intermediate corner (4) to the subject corner (G). The record stone at corner H was found and a stone was found at corner 4. No stone was found at the subject corner (G). The distance between corners H and 4 match the distance recorded in 1881 of 37.80 chains to within one tenth of a foot. The position of the subject corner was established at the prolongation of the line between the stones at corners H and 4 at the record distance of 2.57 chains (169.62 feet) from corner 4. Excavation at this position revealed no further evidence. The harrison monument was set at the calculated position for the corner. This corner was originally established as a wood post in July, 1821.



Kenneth E. Hedge
 Kenneth E. Hedge, County Surveyor

James S. Swift
 James S. Swift, IN LS 20200054
 July 14, 2010

Center Township

Section 7 T18N, R1E	Section 8 T18N, R1E
Section 18 T18N, R1E	Section 17 T18N, R1E

SECTION CORNER RECORD

SE 250-000

BOONE COUNTY SURVEYOR'S OFFICE

State Plane grid coordinates NAD83 (2011):

Corner 1: North: 1732335.32 East: 3124909.32 (U.S. survey feet)

Corner 2: North: 1732499.47 East: 3124908.48 (U.S. survey feet)

Type of monument: Harrison, 4" disk 'Section Corner'

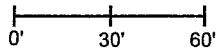
Depth: Flush with adjacent ground (1) and road (2)

Indiana tie card references:

IN02_T18NR1W13_44 IN02_T18NR1E18_36

CORNER WITNESS DETAIL

SCALE 1" = 60'



The Harrison monument at Corner 1 was set in place of a stone found and the Harrison monument at Corner 2 was set on the range line, as defined by Corner 1 and the northeast corner of Section 13, T18N, R1W (see BCS Corner SW 200-000), at the same north-south position as a stone found.

A BCS record of October 27, 1890 states, with respect to Corner 1, "Reestablished by lap and measurements. Set two rocks, one 9x7x5 +. Top one 17x10x8 +." A BCS record of June 16, 1854 shows Corner 2 as "Stone marked 1/4 S. 18." A record of May 6, 1908 references Corner 2, but this reference is believed to refer to the southwest corner of section 18, not the west quarter corner of that section.

A BCS tie card dated September 1, 1995 shows Corner 1 as a metal fence post and Corner 2 as a railroad rail.

Corner 1 was excavated on May 6, 2013. At that time, the lower of the two stones described in the 1890 record was found at two feet deep. Remnants of an old wood corner post were also found adjacent to and south of the stone. The stone was removed and a Harrison monument was set in place of the top, center of the stone as found. A 5/8-inch diameter rebar found prior to excavation had been 0.2 foot east and 0.3 foot south of the corner.

Corner 2 was excavated on May 14, 2013. Prior to excavation, a Mag nail was found at the surface of the road. Excavation revealed a vertical section of railroad rail below the nail.

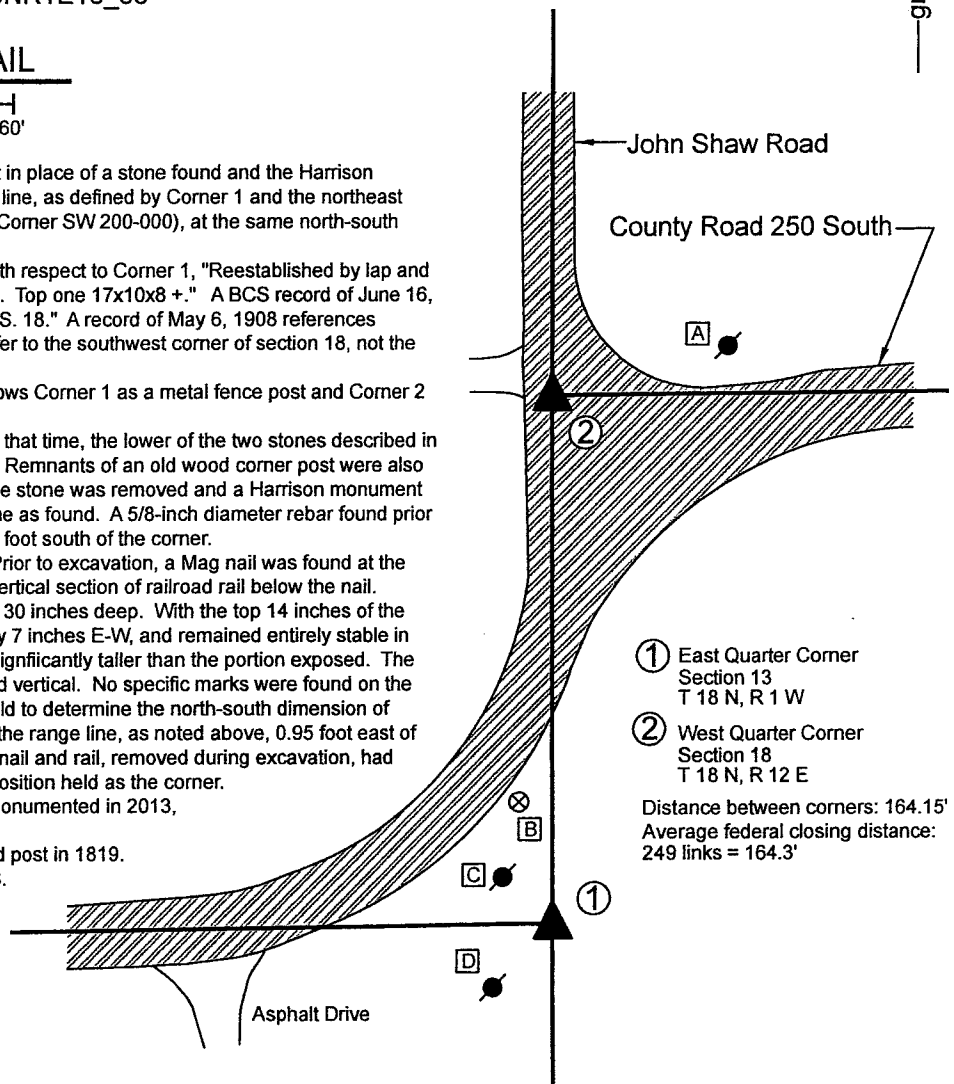
Further excavation revealed a stone found at 30 inches deep. With the top 14 inches of the stone exposed, it measured 12 inches N-S by 7 inches E-W, and remained entirely stable in the ground, clear evidence that the stone is significantly taller than the portion exposed. The east and west sides of the stone were flat and vertical. No specific marks were found on the part of the stone exposed. The stone was held to determine the north-south dimension of Corner 2. A Harrison monument was set on the range line, as noted above, 0.95 foot east of the top, center / high point of the stone. The nail and rail, removed during excavation, had been 0.6 foot south and 0.4 feet east of the position held as the corner.

Though these corners were excavated and monumented in 2013, no documentation was produced at that time.

Corner 1 was originally established as a wood post in 1819.

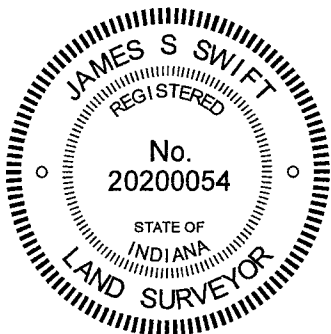
Corner 2 is not an original corner of the PLSS.

- A - Mag nail set in S. side power pole, 2' a.g. 56.8' to Corner 2
- B - Boone County Witness Mark, flush 39.2' to Corner 1, 164.2' to Corner 2
- C - Mag nail set in N. side power pole, 2' a.g. 21.2' to Corner 1
- D - Mag nail set in N. side power pole, 2' a.g. 25.2' to Corner 1



- ① East Quarter Corner Section 13 T 18 N, R 1 W
- ② West Quarter Corner Section 18 T 18 N, R 12 E

Distance between corners: 164.15'
Average federal closing distance: 249 links = 164.3'

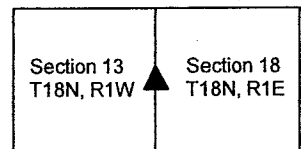


Kenneth E. Hedge
 Kenneth E. Hedge, County Surveyor

James S. Swift
 James S. Swift, IN LS 20200054

March 9, 2021

Center Township



SECTION CORNER RECORD

BOONE COUNTY SURVEYOR'S OFFICE

SE 250-100

State Plane grid coordinates NAD83 (CORS96):
 North: 1732535.10 East: 3129914.20 (U.S. survey feet)

Type of monument: Harrison, 4" disk 'Section Corner'
 Depth: One inch below adjacent road surface

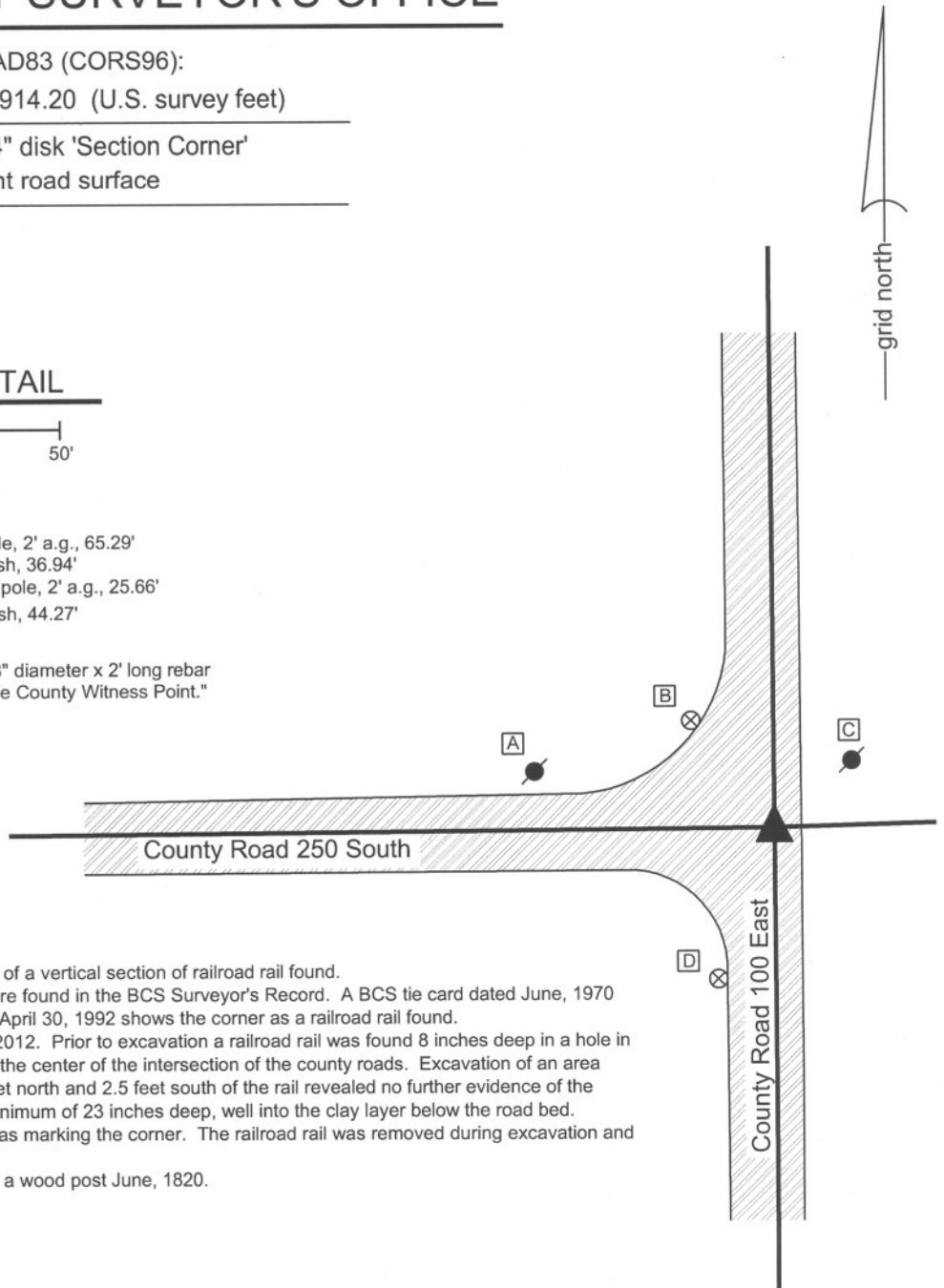
Indiana tie card references:
 IN02_T18NR1E17_36
 IN02_T18NR1E18_44

CORNER WITNESS DETAIL

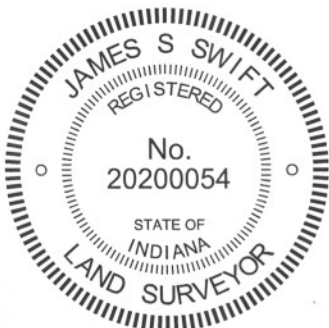


- A - Mag nail set in E. side power pole, 2' a.g., 65.29'
- B - Boone County witness mark, flush, 36.94'
- C - Mag nail set in S.W. side power pole, 2' a.g., 25.66'
- D - Boone County witness mark, flush, 44.27'

Boone County witness mark is a 3/8" diameter x 2' long rebar bearing a metal cap stamped "Boone County Witness Point."

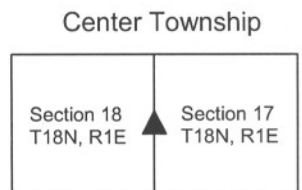


The harrison monument was set in place of a vertical section of railroad rail found. No specific descriptions of this corner were found in the BCS Surveyor's Record. A BCS tie card dated June, 1970 states "no stone." A BCS tie card dated April 30, 1992 shows the corner as a railroad rail found. This corner was excavated on June 27, 2012. Prior to excavation a railroad rail was found 8 inches deep in a hole in the asphalt, approximately 3 feet east of the center of the intersection of the county roads. Excavation of an area extending 1 foot east, 4 feet west, 2.5 feet north and 2.5 feet south of the rail revealed no further evidence of the corner. Excavation as performed to a minimum of 23 inches deep, well into the clay layer below the road bed. The position of the railroad rail was held as marking the corner. The railroad rail was removed during excavation and replaced with a harrison monument. This corner was originally established as a wood post June, 1820.



Kenneth E. Hedge
 Kenneth E. Hedge, County Surveyor

James S. Swift
 James S. Swift, IN LS 20200054
 January 15, 2013



SECTION CORNER RECORD

SE 300-000

BOONE COUNTY SURVEYOR'S OFFICE

State Plane grid coordinates NAD83 (2011):

Corner 1: North: 1729684.83 East: 3124928.56 (U.S. survey feet)

Corner 2: North: 1729838.60 East: 3124927.45 (U.S. survey feet)

Corner 1: 5/8 inch diameter rebar, 24-inches long with aluminum cap stamped "Boone County Surveyor", 11" below grade

Corner 2: Harrison, 4" disk 'Section Corner', flush

Indiana tie card references:

IN02_T18NR1E18_72 IN02_T18NR1W13_80

IN02_T18NR1W24_08 IN02_T18NR1E19_00

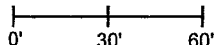
① S.E. Corner, Section 13
N.E. Corner, Section 24
T 18 N, R 1 W

② S.W. Corner, Section 18
N.W. Corner, Section 19
T 18 N, R 1 E

Distance between monuments:
233 links = 158.44 feet

CORNER WITNESS DETAIL

SCALE 1" = 60'



A - Wood post, 0.98' N.W. of Harrison at corner 2

The Harrison monument at Corner 2 was set in place of a stone found. The rebar with cap at Corner 1 was set on the meridian line, as defined by Corner 2 and the standard corner 1/2 mile north, at a point 233 links from Corner 2. Both of these corners are addressed in BCS records of March 30, 1874. The record of that date pertaining to Corner 1 states "Reest. from trees. Rock 9.5 1/2.5 +." The record of that date pertaining to Corner 2 states, "Reestablished from roots of Beech. Set a Rock 16,13,4 to 7 marked +. Is 233 links North of corner, Sections 13 & 24." No recent BCS tie cards were found referencing these corners.

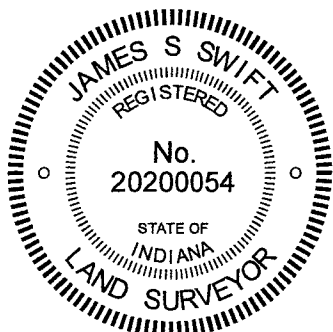
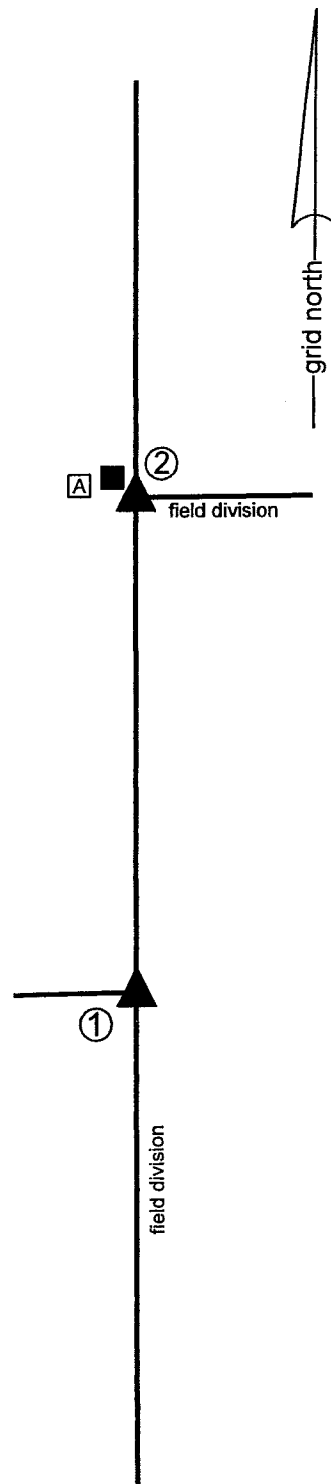
Both corners were excavated on March 10, 2021. Prior to excavation, a wood post was observed standing at the intersection of field divisions to the north, south and east. No other evidence of the corners was visible. It was observed that the position of the wood corner post was almost precisely on the westerly prolongation of a line connecting the north quarter corner and northeast corner of section 19.

Excavation in the vicinity of the wood post revealed the base of another, presumably older, wood corner post east of and adjacent to the standing post. The stone described in the 1874 record for Corner 2 was found at 8 inches deep, immediately south of and adjacent to the base of the old wood post. The stone was vertical and oriented in cardinal directions, as found, with the top of the rock being flat, horizontal and clearly oriented in the east-west dimension. The east edge of the stone was found to be approximately 5 inches wide while the west edge of the stone was 7 inches wide. The stone measured 13 inches east west by 14 inches tall, as measured vertically, and 16 inches, as measured diagonally. No marks were observed on the top of the stone. However, when the stone was removed from the ground, a distinct etched "+" mark was clearly visible on the bottom of the stone. Typically, these marks are found at the top or sides of the stones. Either the stone was installed upside-down in 1874 or the stone has been removed and replaced in that orientation. No other evidence that it may have been moved or disturbed was observed.

Excavation of a position 233 links (158.44 feet) south of the found stone revealed another stone and the base of an old cedar corner post. The base of the post was found at 11 inches deep, at precisely 233 links south of the stone found at Corner 2. The found stone was 1 foot further south and slightly east. This stone was found at the surface of the field. It did not match the dimensions called in the 1874 record and appeared that it could be easily moved. The stone called as marking Corner 1 in the 1874 record was not found. It is noted that it was rather small and that the base of the post was found several inches deeper in the field than was the stone at Corner 1.

It is also noted that the original federal notes state that Corner 2 was established 234 links north of Corner 1, but the 1874 record specifically stipulates a separation of 233 links, which precisely matches the evidence found. The stone at Corner 2 was removed and replaced with a Harrison monument on March 10, 2021. The precise position of Corner 1 was established on the southerly prolongation of the line connecting Corner 2 and the east quarter corner of section 13 (See BCS Corner SW 250-000) at a distance of 233 links or 158.44 feet. The position falls adjacent to and east of the base of the 8-inch diameter cedar post and in-line with the north-south field division. A 24-inch length of 5/8-inch diameter rebar with metal cap stamped 'Boone County Surveyor' was set 11 inches deep on March 12, 2021.

Corner 1 was originally established as a wood post in 1819. Corner 2 was originally established as a wood post in 1820.



Kenneth E. Hedge
Kenneth E. Hedge, County Surveyor

James S. Swift
James S. Swift, IN LS 20200054

March 17, 2021

Center
Township

Section 13 T18N, R1W	Section 18 T18N, R1E
-------------------------	-------------------------

Harrison
Township

Section 24 T18N, R1W	Section 19 T18N, R1E
-------------------------	-------------------------

SECTION CORNER RECORD

SE 300-050

BOONE COUNTY SURVEYOR'S OFFICE

State Plane grid coordinates NAD83 (CORS96):

North: 1729853.27 East: 3127279.46 (U.S. survey feet)

Type of monument: Harrison, 4" disk 'Section Corner'

Depth: flush with the adjacent ground


Indiana tie card references:

IN02_T18NR1E18_76

IN02_T18NR1E19_04

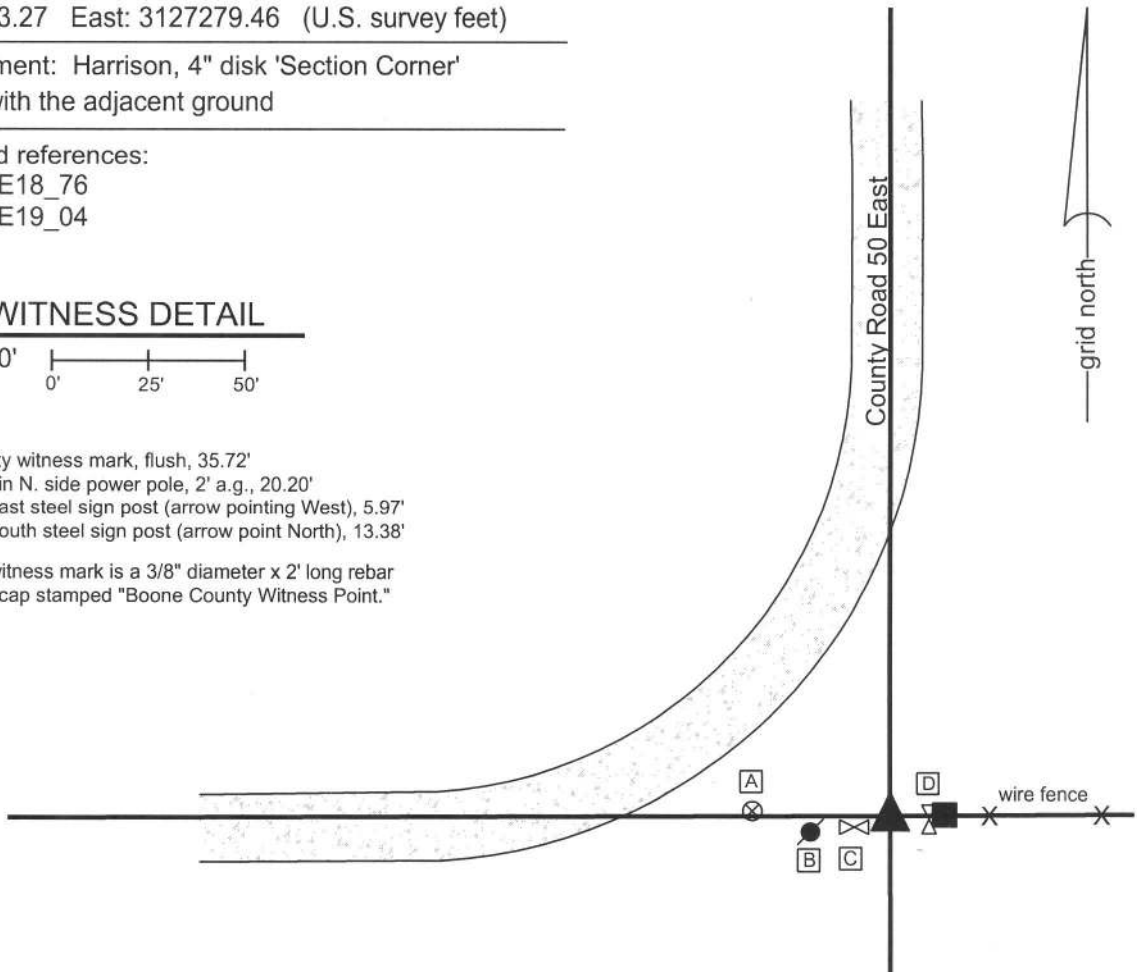
CORNER WITNESS DETAIL

SCALE 1" = 50'



- A - Boone County witness mark, flush, 35.72'
- B - Mag nail set in N. side power pole, 2' a.g., 20.20'
- C - East edge, east steel sign post (arrow pointing West), 5.97'
- D - South edge, south steel sign post (arrow point North), 13.38'

Boone County witness mark is a 3/8" diameter x 2' long rebar bearing a metal cap stamped "Boone County Witness Point."



The Harrison monument was set in a position determined by local evidence.

A BCS record of November 13, 1912 states "found rock set." No recent BCS tie cards were found referencing this corner. An undated card which has been available in this office for many years purports to reference this corner, but the geometry of the road as shown on the card does not fit with the physical conditions at the corner. Investigation of the field notes associated with this card revealed the fact that the corner to which the card was intended to reference is the NE corner of NW 1/4, of the SE 1/4 of section 19.


Excavation was performed at this corner on May 14, 2013. No monuments were found marking the corner prior to excavation, though significant local evidence of the corner was available in the form of the center of the road to the north and west and the presence of an end post at the westerly terminus of an old fence to the east. Excavation of an area 10 feet E-W by 12 N-S centered on the apparent location of the corner per the local evidence yielded no further evidence of the corner. A distinct vein of sand was found in the center of the hole between 2 and 3 feet deep.

The corner was established at 1 rod (16.5 feet) west of the adjacent wood end post, at the westerly prolongation of the fence to the east of said post, which point also falls at the southerly prolongation of the center of the county road to the north and the easterly prolongation of the center of the county road to the west. A Harrison monument was set within a vertical section of 12 inch diameter HDPE storm pipe, filled with concrete, at this point.

This corner was originally established as a wood post in 1820.




Kenneth E. Hedge, County Surveyor


James S. Swift, IN LS 20200054
February 5, 2015

Center
Township

Section 18
T18N, R1E

Harrison
Township

Section 19
T18N, R1E

SECTION CORNER RECORD

BOONE COUNTY SURVEYOR'S OFFICE

SE 300-100

State Plane grid coordinates NAD83 (CORS96):

North: 1729869.74 East: 3129924.20 (U.S. survey feet)

Type of monument: Harrison, 4" disk 'Section Corner'

Depth: six inches below adjacent gravel road surface

Indiana tie card references:

IN02_T18NR1E18_80

IN02_T18NR1E17_72

IN02_T18NR1E19_08

IN02_T18NR1E20_00

CORNER WITNESS DETAIL

SCALE 1" = 30'



A - Boone County witness mark, flush, 12.43'

B - Boone County witness mark, flush, 25.76'

C - Mag nail set in N. side power pole, 2' a.g., 64.05'

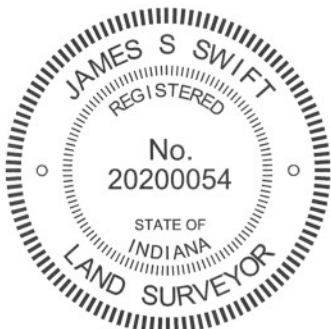
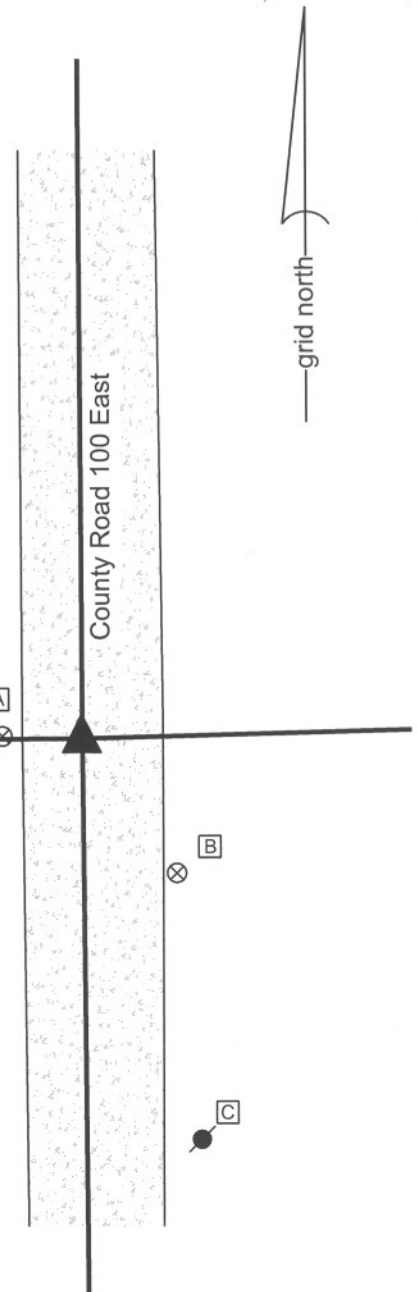
Boone County witness mark is a 3/8" diameter x 2' long rebar bearing a metal cap stamped "Boone County Witness Point."

The harrison monument was set in place of a railroad rail found.

No specific descriptions of this corner were found in the BCS Surveyor's Record. A BCS tie card dated May 1968 shows the corner and states "stone with + lying in sideditch."

This corner was excavated on February 28, 2011. Two vertical sections of railroad rail were found at 3 inches deep. One rail was 0.7 foot north and 0.7 foot west of the other rail. The one remaining distance tie reference from the 1968 tie card is a wood post on the west side of the road. The tie card shows the corner being 18 feet east of this post and 19 feet west of the post on the east side of the road. Neither rail fits with the tie to the post on the west, though the northwest of the two rails was at approximately 19 feet. The other rail was closer to 20 feet from the post. Excavation of an area 8 feet N-S by 7 feet E-W, approximately centered on the rails, yielded no further evidence. As the northwesterly of the two rails fit with one dimension shown on the tie card, albeit reversed from the orientation shown on the tie card, and was also more in line with the post, this rail was held as the corner. Both rails were removed during excavation and a harrison monument was set in the position of the northwesterly rail.

This corner was originally established as a wood post in June 1820.



Kenneth E. Hedge
 Kenneth E. Hedge, County Surveyor

James S. Swift
 James S. Swift, IN LS 20200054
 March 1, 2012

Center Twp	Section 18 T18N, R1E	Section 17 T18N, R1E
Harrison Twp	Section 19 T18N, R1E	Section 20 T18N, R1E