

SECTION CORNER RECORD

SW 800-1100

BOONE COUNTY SURVEYOR'S OFFICE

State Plane grid coordinates NAD83 (2011):

North: 1702828.09 East: 3066900.67 (U.S. survey feet)

Type of monument: One-inch diameter iron pin in concrete

Depth: Flush with adjacent road surface

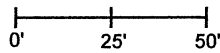
Indiana tie card references:

IN02_T17NR2W07_72 IN02_T17NR2W08_80

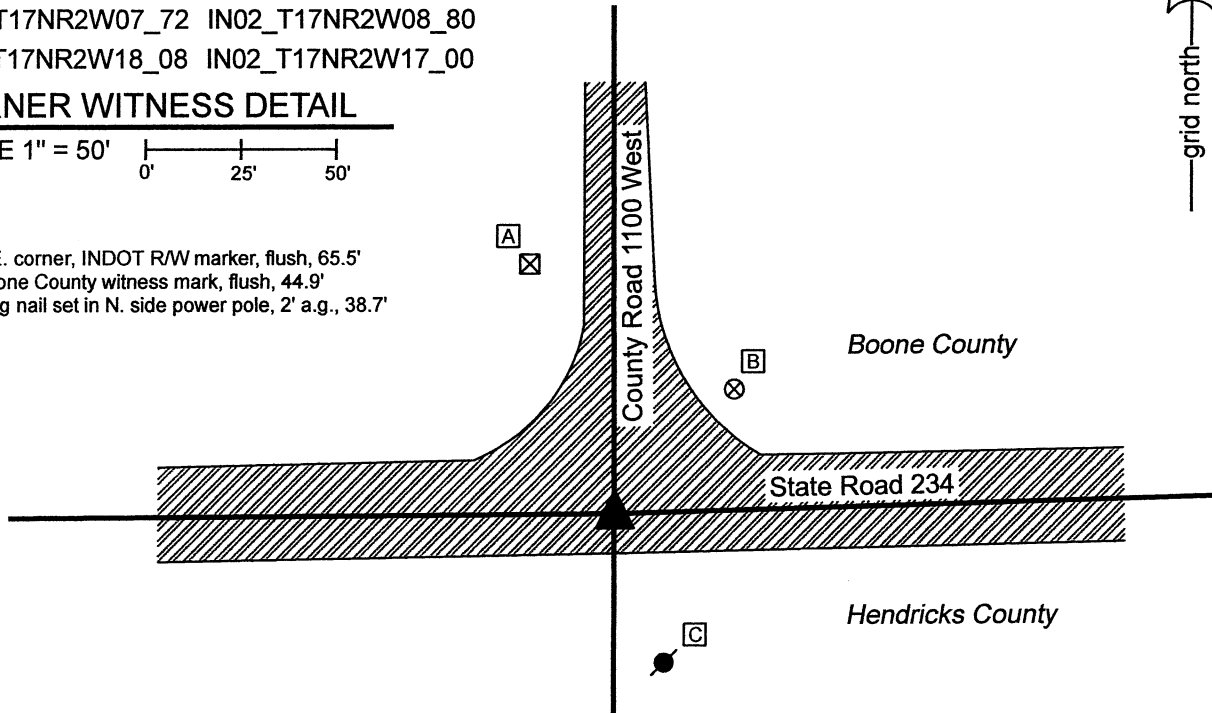
IN02_T17NR2W18_08 IN02_T17NR2W17_00

CORNER WITNESS DETAIL

SCALE 1" = 50'



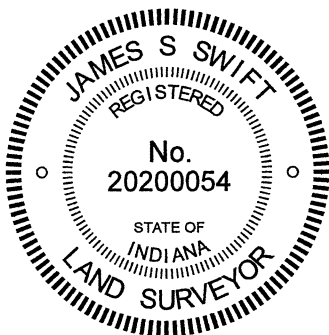
- A - S.E. corner, INDOT R/W marker, flush, 65.5'
- B - Boone County witness mark, flush, 44.9'
- C - Mag nail set in N. side power pole, 2' a.g., 38.7'



The iron pin in concrete was found and held as marking the corner.

No specific descriptions of this corner were found in the BCS Surveyor's Record beyond the original establishment of the corner as a wood post in 1820. No recent BCS tie cards were found referencing the corner.

The plans for State Road 234, being Proj. No. WPSS and MS-431, Indiana State Highway Commission, S.R. 43 - Jamestown Road (1936) show a boat spike buried 3" at P.I. Station 688+10.29. These plans do not specifically call out the P.I. as a section corner, but do show it in line with the state road centerline to the east and west and in-line with the north-south county road centerline, with the call of Section Line along the center of the north-south county road. The 1-inch diameter iron pin in concrete appears to be a typical INDOT section corner monument but no information was provided by INDOT as to when this specific monument was set. A full route survey was not performed to determine the precise station of the monument, but it is noted the distances between this monument and other similar monuments found along this stretch of road match the computed distances between stations shown on the plans within less than 0.5 foot. No excavation was performed at this corner as it falls in a state road. The iron pin in concrete was held as marking the corner.



Kenneth E. Hedge
 Kenneth E. Hedge, County Surveyor

James S. Swift
 James S. Swift, IN LS 20200054
 June 23, 2021

Jackson Township
Boone County

Eel River Township
Hendricks County

Section 7 T17N, R2W	Section 8 T17N, R2W
Section 18 T17N, R2W	Section 17 T17N, R2W

SECTION CORNER RECORD

SW 800-1150

BOONE COUNTY SURVEYOR'S OFFICE

State Plane grid coordinates NAD83 (2011):

North: 1702811.95 East: 3064253.58 (U.S. survey feet)

Type of monument: Harrison, 4" disk 'Section Corner'

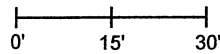
Depth: Six inches below adjacent road surface

Indiana tie card references:

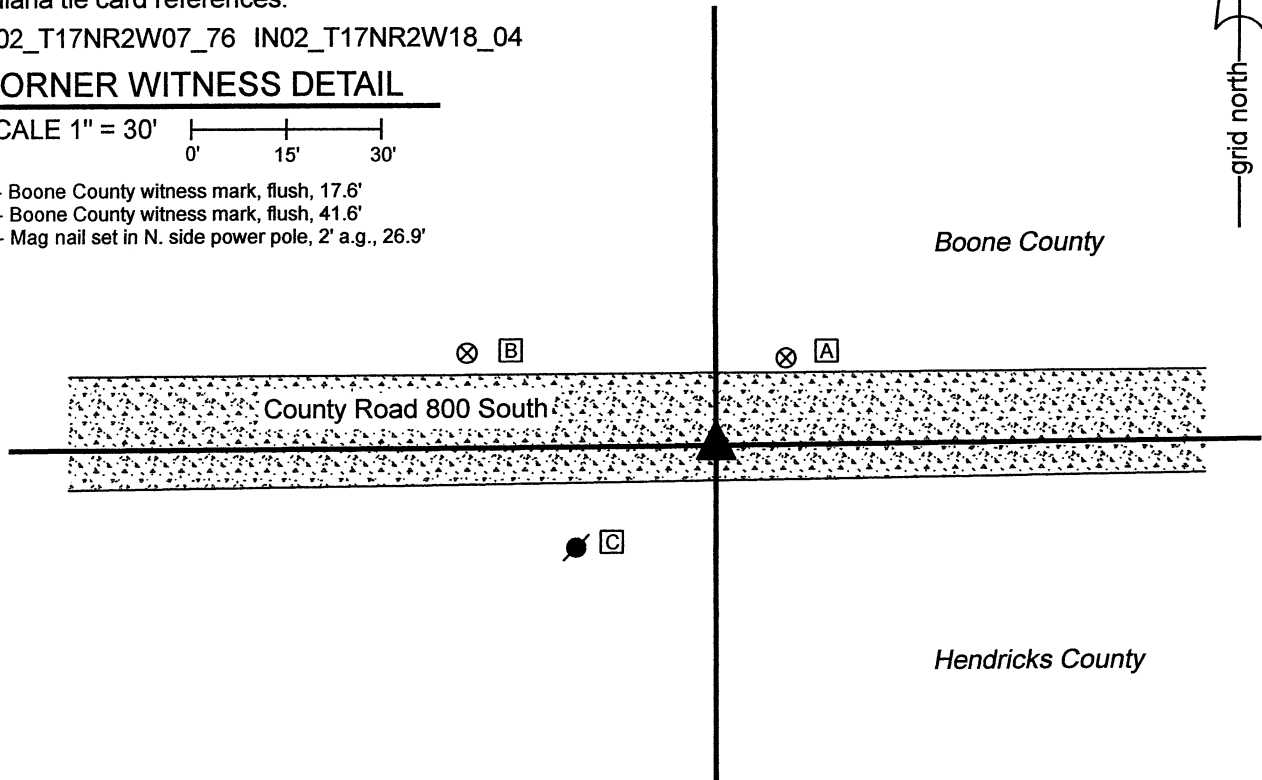
IN02_T17NR2W07_76 IN02_T17NR2W18_04

CORNER WITNESS DETAIL

SCALE 1" = 30'



- A - Boone County witness mark, flush, 17.6'
- B - Boone County witness mark, flush, 41.6'
- C - Mag nail set in N. side power pole, 2' a.g., 26.9'

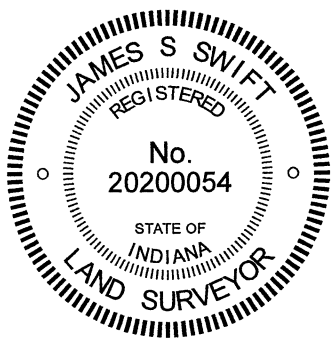


The Harrison monument was set in place of a stone found.

No specific descriptions of this corner were found in the BCS Surveyor's Record beyond the original establishment of the corner as a wood post in 1820, nor were any recent BCS tie cards found referencing this corner. Field notes provided by the Office of the Hendricks County Surveyor dated December 4, 2013 state that a Hendricks County rebar and disk were set over a stone with cut "X" found at 8 inches deep, 3 feet +/- south of the center of the county road.

This corner was excavated on March 29, 2021. The Hendricks County rebar and disk were not found but the stone with the cut "X" was found in the same position as is noted on the Hendricks County field notes. The stone was found at 3 inches deep, south of the center of the road, as noted in the field notes. The cut "X" mark was clearly visible. This mark was not an ancient chisel mark, but a more recent mark made with a power grinder, as is typically made by representatives of the Hendricks County Surveyor's Office. Evidently the older mark observed when the stone was found in 2013 was enhanced with a power grinder. The stone was too shallow to set a Harrison monument over it at an appropriate depth to avoid disruption by a road grader, hence the stone was removed. The full dimensions of the stone were 11 inches E-W by 12 inches N-S by 26 inches tall. The Hendricks County notes call it as a 9 inch by 10 inch stone, which represents the dimensions of the top of the stone, as found. The cut mark on the top, center of the stone was held as the specific position of the corner. A Harrison monument was set at 6 inches deep in the same horizontal position as the mark on the stone on March 29, 2021.

No other metal monument was found at the time of excavation, though it is noted that a railroad spike had been previously found at a position 2 feet north and 11.7 feet west of the mark on the stone.



Kenneth E. Hedge

 Kenneth E. Hedge, County Surveyor

James S. Swift

 James S. Swift, IN LS 20200054
 April 7, 2021

Jackson Township
Boone County

Section 7
T17N, R2W

Eel River Township
Hendricks County

Section 18
T17N, R2W