

# SECTION CORNER RECORD

SW 800-550

## BOONE COUNTY SURVEYOR'S OFFICE

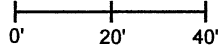
State Plane grid coordinates NAD83 (2011):  
North: 1702932.15 East: 3096145.98 (U.S. survey feet)

Type of monument: Harrison, 4" disk 'Section Corner'  
Depth: Three inches above surrounding ground

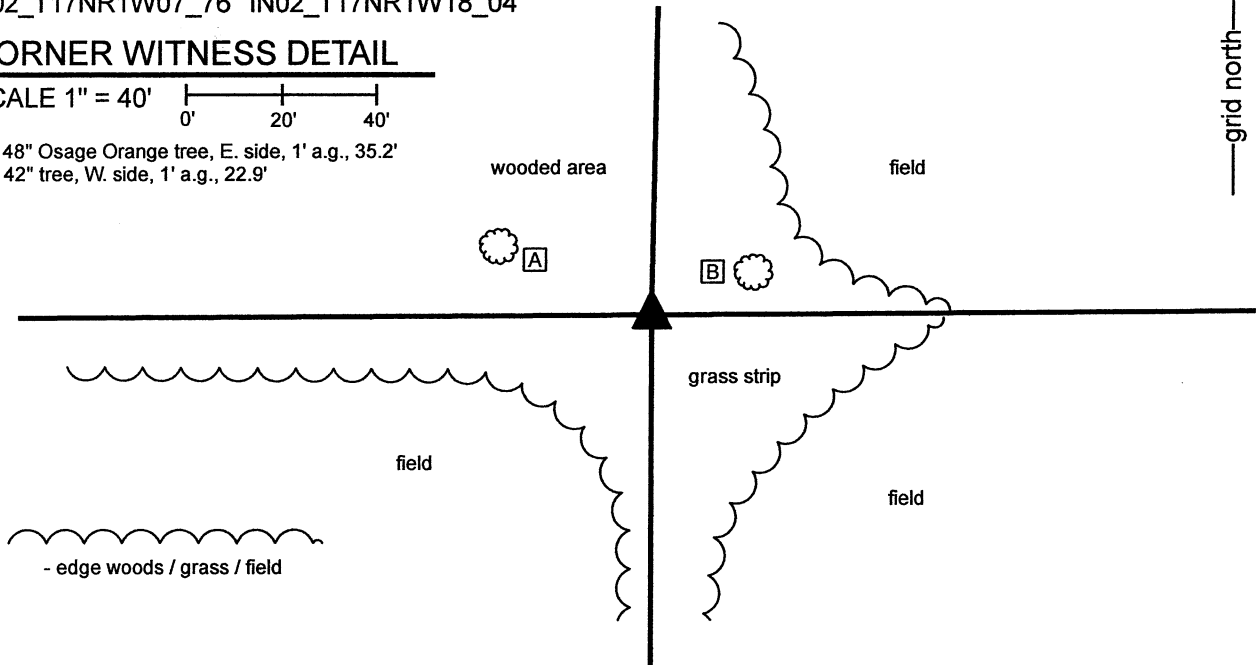
Indiana tie card references:  
IN02\_T17NR1W07\_76 IN02\_T17NR1W18\_04

### CORNER WITNESS DETAIL

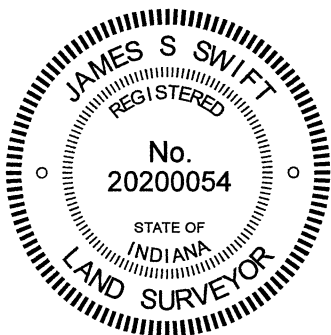
SCALE 1" = 40'



A - 48" Osage Orange tree, E. side, 1' a.g., 35.2'  
B - 42" tree, W. side, 1' a.g., 22.9'



The Harrison monument was set over a stone found. No specific descriptions of this corner were found in the BCS Surveyor's Record beyond the original establishment of the corner as a wood post in 1820. No recent BCS tie cards were found referencing the corner. Field notes provided by the Office of the Hendricks County surveyor dated July 23, 2013 state that an 8-inch by 8-inch corner post was found and that a search was made of approximately 3 feet around the post. The notes state that a 9x18x15 inch stone was found lying flat on the surface on the east side of the post. The notes are not explicit about whether the stone or post was held as marking the corner. This corner was excavated on March 9, 2021. The post and stone noted in the Hendricks County field notes were found, as specified in the notes. Excavation on that date and on March 17, 2021 revealed rocks buried on the north and west edges of the post, neither of which appeared to represent monuments purposely set to mark the corner. The stone on the east edge of the post was found to be partially embedded in the ground. This stone was removed and three additional rocks were found directly below. The upper two stones appeared to be haphazardly set, but the lowest stone, found at 14 inches deep, bore the characteristics of a corner stone, being vertical and oriented in cardinal directions. The stone was not touching the post and did not appear to be a brace rock. The stone measured 10 inches tall by 12 inches east-west by 8 inches north-south. This stone was accepted as the best available evidence of the corner. The stone was left in place and a Harrison monument was set over the top, center of the stone on March 17, 2021. The Harrison monument is 0.91 foot east of the northeast corner of the post and is surrounded by numerous other rocks found in the general vicinity of the post and set around the Harrison monument to protect it from being disturbed by agricultural machinery.



*Kenneth E. Hedge*  
Kenneth E. Hedge, County Surveyor

*James S. Swift*  
James S. Swift, IN LS 20200054  
April 7, 2021

Jackson  
Township  
Boone  
County

Section 7  
T17N, R1W

Union  
Township  
Hendricks  
County

Section 18  
T17N, R1W