

SECTION CORNER RECORD

SE 800-000

BOONE COUNTY SURVEYOR'S OFFICE

State Plane grid coordinates NAD83 (2011):

Corner 2: North: 1703279.83 East: 3125201.14 (U.S. survey feet)

Corner 1: Precise position not yet perpetuated.

Corner 2: Stone with plus etched in top, seven inches below adjacent ground

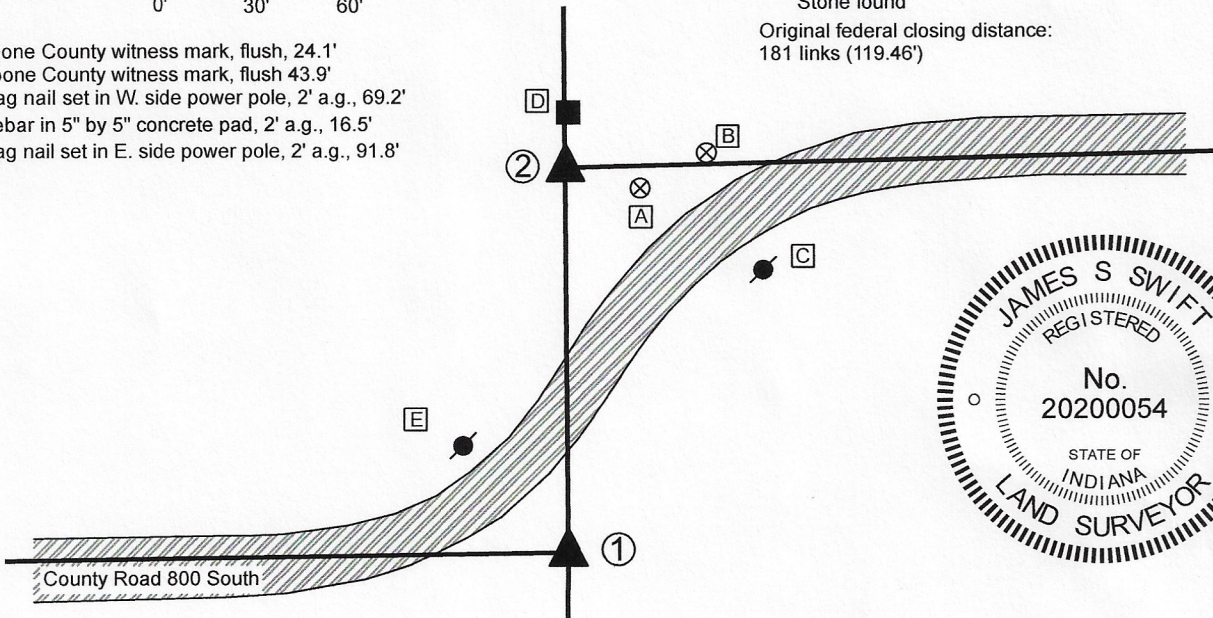
Indiana tie card references:

IN02_T17NR1W12_80 IN02_T17NR1E07_72
 IN02_T17NR1W13_08 IN02_T17NR1E18_00

CORNER WITNESS DETAIL

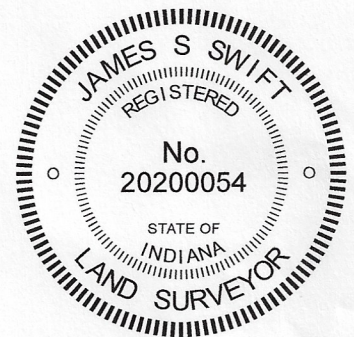
SCALE 1" = 60'

- A - Boone County witness mark, flush, 24.1'
- B - Boone County witness mark, flush 43.9'
- C - Mag nail set in W. side power pole, 2' a.g., 69.2'
- D - Rebar in 5" by 5" concrete pad, 2' a.g., 16.5'
- E - Mag nail set in E. side power pole, 2' a.g., 91.8'



- ① S.E. Corner, Section 12
 N.E. Corner, Section 13
 T 17 N, R 1 W
 Position not established
- ② S.W. Corner, Section 7
 N.W. Corner, Section 18
 T 17 N, R 1 E
 Stone found

Original federal closing distance:
 181 links (119.46')



The stone marking Corner 2 was found in place and held as marking the corner.

A BCS Record of October 17-18, 1898 states, with respect to Corner 2, "Established Corner. 6x10x12 +. Top Rock 13x14x22 +". These stones were previously found by the Hendricks County Surveyor's Office. The top stone is located at 7 inches below grade, in line with the westerly prolongation of the approximate center of County Road 800 South to the east. The top stone is oriented in cardinal directions and measures 13 inches by 14 inches. The total height was not measured. Field notes by the Hendricks County Surveyor's Office dated November 3, 2017 state that the stone is 24 inches tall and is above another stone 6 by 10 by 12 inches. An etched + mark was ground into the top of the top stone by representatives of the Hendricks County. This mark is held as the precise position Corner 2.

No specific descriptions of Corner 1 were found in the BCS Surveyor's Record beyond the original establishment of the corner as a wood post in 1819.

The original notes for the federal subdivision of T17N, R1W call for an offset of 181 links (119.46 feet) between the two corners. The Hendricks County Surveyor's Office performed an extensive search at a position centered 119.46 feet south of the stone at Corner 2 in May, 2013 but did not find further evidence of the corner. It is noted that a position at 119.46 feet south of Corner 2 on the southerly prolongation of the meridian line fits well with the approximate center of the county road as it bears west from the corner. The precise position of Corner 1 will be established after the standard corner to the north (BC Corner SW-750-000) is established and after further reconnaissance is performed with respect to the position of the quarter corner to the west (BC Corner SW-800-050).

Kenneth E. Hedge
 Kenneth E. Hedge, County Surveyor

James S. Swift
 James S. Swift, IN LS 20200054
 August 26, 2020

Harrison Township
 Boone County

Middle Township
 Hendricks County

Section 12 T17N, R1W	Section 7 T17N, R1E
Section 13 T17N, R1W	Section 18 T17N, R1E

SECTION CORNER RECORD

SE 800-000

BOONE COUNTY SURVEYOR'S OFFICE

State Plane grid coordinates NAD83 (2011):

Corner 1: North: 1703279.83 East: 3125201.14 (U.S. survey feet)

Corner 2: North: 1703160.38 East: 3125202.68 (U.S. survey feet)

Corner 1: 5/8" diameter rebar with aluminum cap stamped,
'Boone County Surveyor' 14 inches deep

Corner 2: Stone with cut X found, seven inches deep

Indiana tie card references:

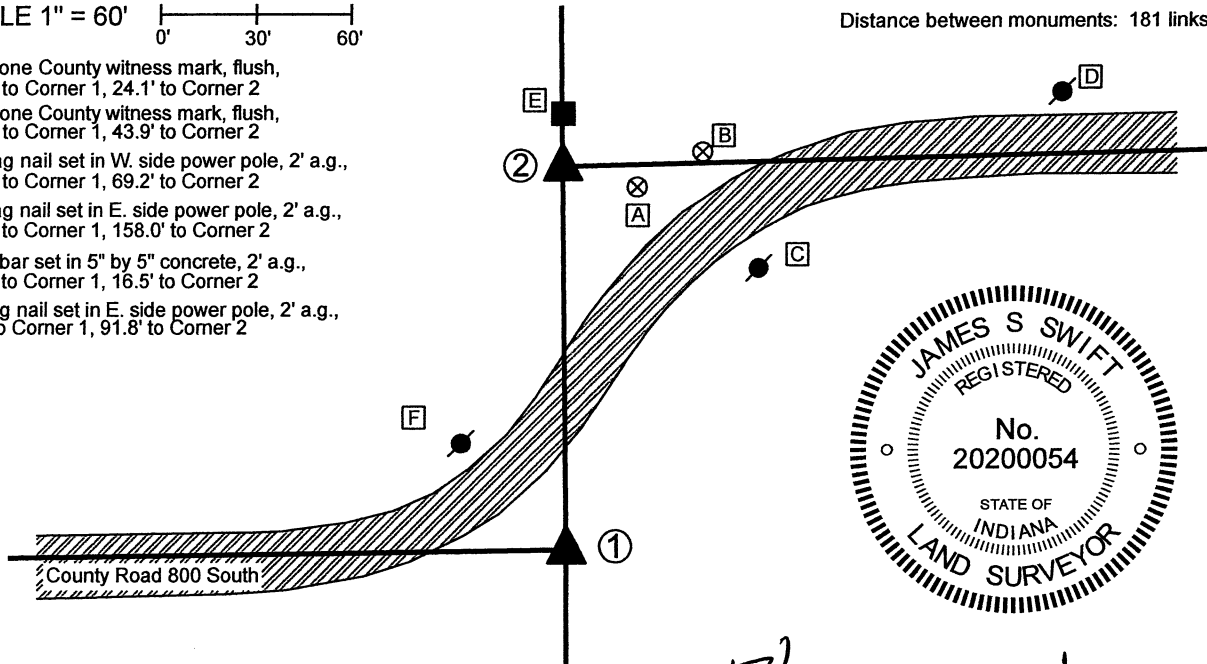
IN02_T17NR1W12_80 IN02_T17NR1E07_72

IN02_T17NR1W13_08 IN02_T17NR1E18_00

CORNER WITNESS DETAIL

SCALE 1" = 60'

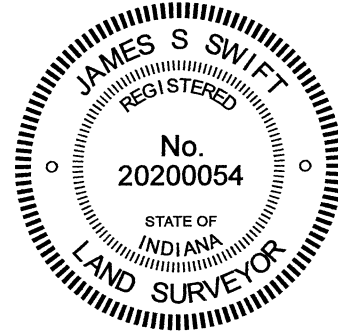
- A - Boone County witness mark, flush, 115.1' to Corner 1, 24.1' to Corner 2
- B - Boone County witness mark, flush, 130.9' to Corner 1, 43.9' to Corner 2
- C - Mag nail set in W. side power pole, 2' a.g., 106.1' to Corner 1, 69.2' to Corner 2
- D - Mag nail set in E. side power pole, 2' a.g., 210.4' to Corner 1, 158.0' to Corner 2
- E - Rebar set in 5" by 5" concrete, 2' a.g., 136.0' to Corner 1, 16.5' to Corner 2
- F - Mag nail set in E. side power pole, 2' a.g., 46.9' to Corner 1, 91.8' to Corner 2



① S.E. Corner, Section 12
N.E. Corner, Section 13
T 17 N, R 1 W
5/8" diameter rebar set

② S.W. Corner, Section 7
N.W. Corner, Section 18
T 17 N, R 1 E
Stone with cut X found

Distance between monuments: 181 links = 119.46'



Kenneth E. Hedge
Kenneth E. Hedge, County Surveyor

James S. Swift
James S. Swift, IN LS 20200054

April 21, 2021

The stone marking Corner 2 was found in place and held as marking the corner. Corner 1 was set at the federal closing distance of 181 links South. A BCS Record of October 17-18, 1898 states, with respect to Corner 2, "Established Corner. 6x10x12 +. Top Rock 13x14x22 +". These stones were previously found by the Hendricks County Surveyor's Office. The top stone is located at 7 inches below grade, in line with the westerly prolongation of the approximate center of County Road 800 South to the east. The top stone is oriented in cardinal directions and measures 13 inches by 14 inches. The total height was not measured. Field notes by the Hendricks County Surveyor's Office dated November 3, 2017 state that the stone is 24 inches tall and is above another stone 6 by 10 by 12 inches. An etched + mark was ground into the top of the top stone by representatives of Hendricks County. This mark is held as the precise position Corner 2.

No specific descriptions of Corner 1 were found in the BCS Surveyor's Record beyond the original establishment of the corner as a wood post in 1819. The original notes for the federal subdivision of T17N, R1W call for an offset of 181 links (119.46 feet) between the two corners. The Hendricks County Surveyor's Office performed an extensive search at a position centered 119.46 feet south of the stone at Corner 2 in May, 2013 but did not find further evidence of the corner. It is noted that a position at 119.46 feet south of Corner 2 on the southerly prolongation of the meridian line fits well with the approximate center of the county road as it bears west from the corner. Corner 1 was established on the southerly prolongation of the line connecting Corner 2 and the standard corner 1/2 mile north (see BC Corner SW-750-000) at 119.46 feet south of Corner 2. This position falls in an area of tilled field. A 24-inch length of 5/8-inch rebar was set at this position at 14 inches deep on March 12, 2021.

Harrison Township
Boone County

Middle Township
Hendricks County

Section 12 T17N, R1W	Section 7 T17N, R1E
Section 13 T17N, R1W	Section 18 T17N, R1E

SECTION CORNER RECORD

SE 800-100

BOONE COUNTY SURVEYOR'S OFFICE

State Plane grid coordinates NAD83 (2011):

North: 1703381.38 East: 3130420.98 (U.S. survey feet)

Type of Monument: 5/8" rebar with aluminum cap stamped 'Hendricks County Surveyor Cap'

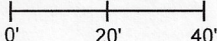
Depth: Two inches below adjacent road surface

Indiana tie card references:

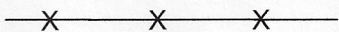
IN02_T17NR1E07_80 IN02_T17NR1E08_72

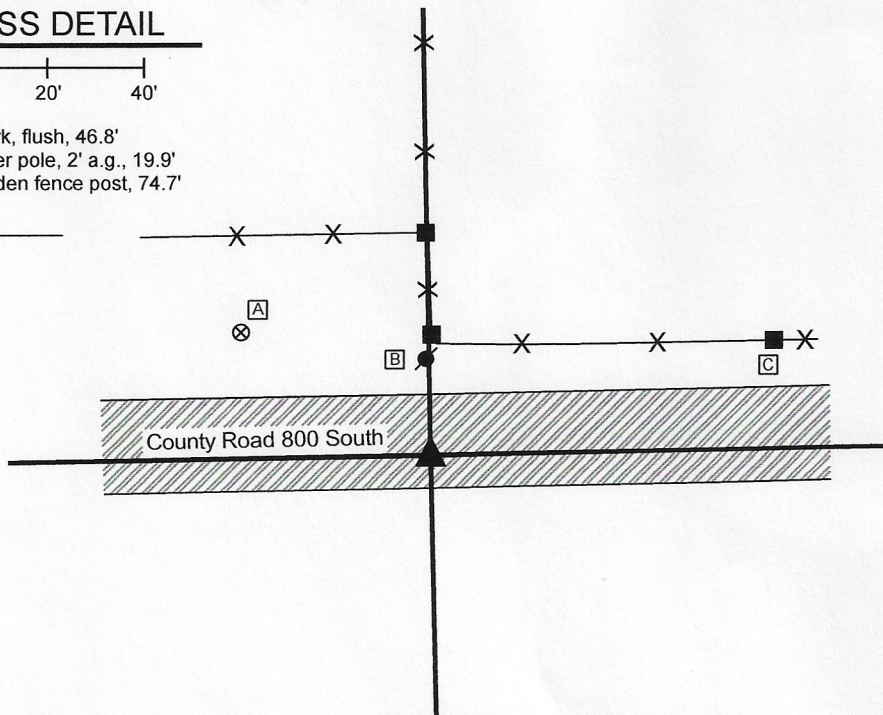
IN02_T17NR1E18_08 IN02_T17NR1E17_00

CORNER WITNESS DETAIL

SCALE 1" = 40' 

- A - Boone County witness mark, flush, 46.8'
- B - Mag nail set in S side power pole, 2' a.g., 19.9'
- C - Mag nail set in S side wooden fence post, 74.7'

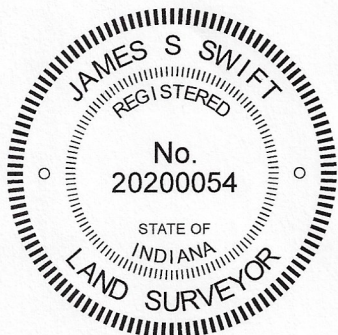
 - wire fence

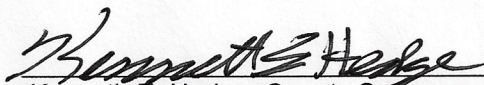


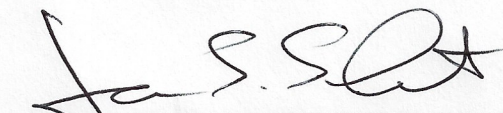
The rebar with Hendricks County Surveyor cap was found in place and accepted as marking the corner.

No specific descriptions of this corner were found the BCS Surveyor's Record beyond the original establishment of the corner as a wood post in 1820. No recent BCS tie cards were found referencing the corner.

A tie card provided by the Hendricks County Surveyor's Office dated March 24, 2008 states that a white limestone rock which measured 8 inches by 5 inches on top was found at 14 inches deep marking the corner. A 5/8 inch diameter rebar with metal cap stamped Hendricks County Surveyor was set over the stone. The tie card also states that a rebar with "Dodge" cap was found 4 feet north of the stone. The Hendricks County monument was found and held as the position of the corner. In 2010, a 5/8 inch rebar was also found at 3 feet north of the Hendricks County monument. This rebar is believed to remain present, but has been paved over. Both monuments are in-line with a fence to the north. The northerly rebar is close to the center of the east-west county road, but is not held as the corner.




Kenneth E. Hedge, County Surveyor


James S. Swift, IN LS 20200054
August 26, 2020

	Harrison Township	Perry Township
Boone County	Section 7 T17N, R1E	Section 8 T17N, R1E
Middle Township Hendricks County	Section 18 T17N, R1E	Section 17 T17N, R1E