

# SECTION CORNER RECORD

# SW 800-1000

## BOONE COUNTY SURVEYOR'S OFFICE

State Plane grid coordinates NAD83 (2011):

North: 1702968.05 East: 3072255.52 (U.S. survey feet)

Type of monument: One-inch diameter iron pin in concrete

Depth: Flush with adjacent road surface

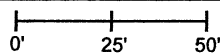
Indiana tie card references:

IN02\_T17NR2W09\_72 IN02\_T17NR2W08\_80

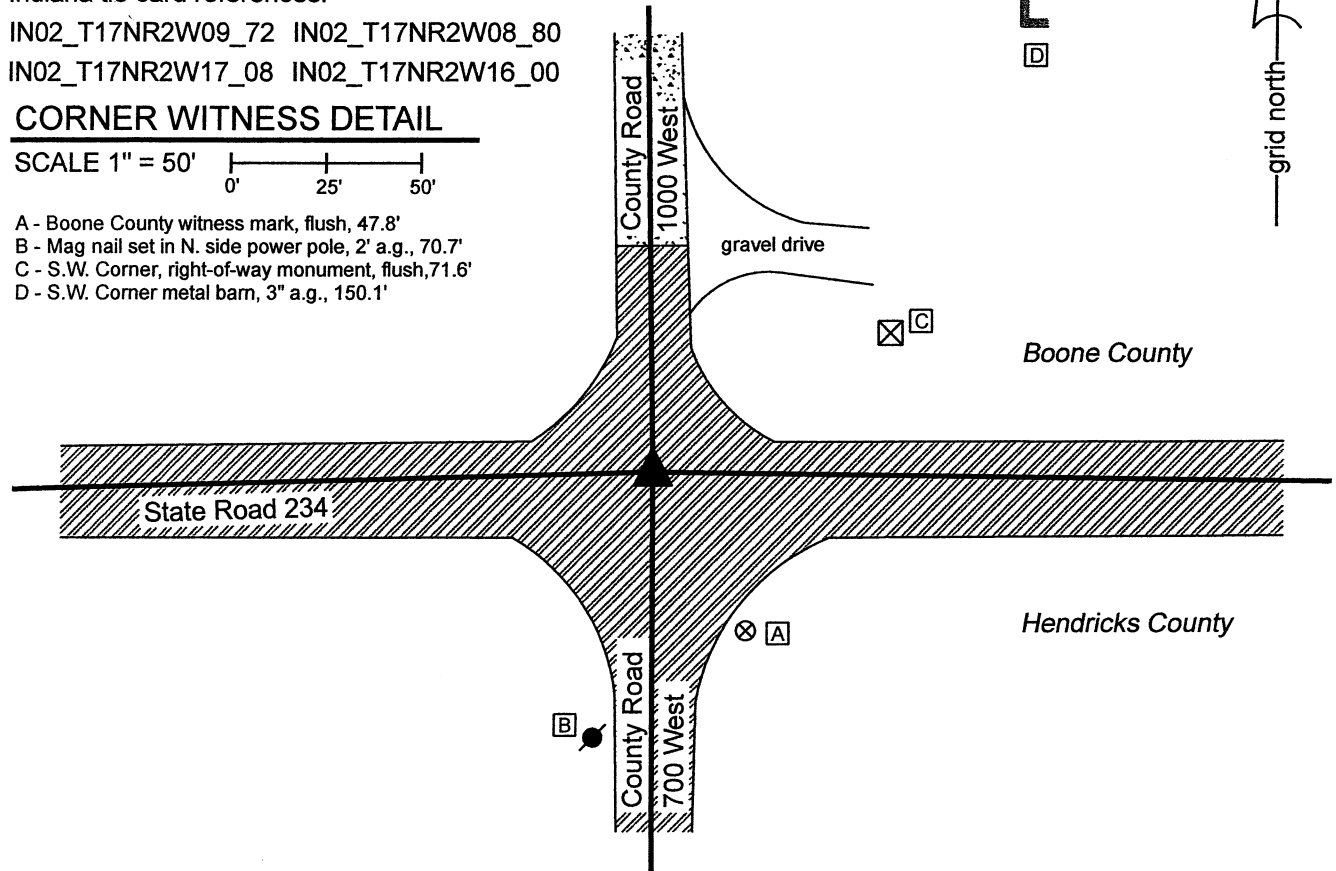
IN02\_T17NR2W17\_08 IN02\_T17NR2W16\_00

### CORNER WITNESS DETAIL

SCALE 1" = 50'



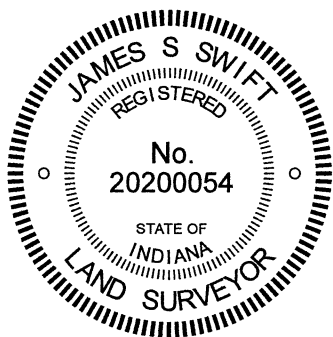
- A - Boone County witness mark, flush, 47.8'
- B - Mag nail set in N. side power pole, 2' a.g., 70.7'
- C - S.W. Corner, right-of-way monument, flush, 71.6'
- D - S.W. Corner metal bam, 3" a.g., 150.1'



The iron pin in concrete was found and held as marking the corner.

A BCS record of October 15 & 25, 1869 states, with respect to this corner, "A rock was at the Cor. Shown by a stump." No recent BCS tie cards were found referencing the corner.

The plans for State Road 234, being Proj. No. WPSS and MS-431, Indiana State Highway Commission, S.R. 43 - Jamestown Road (1936) show a stone with a hole at P.I. Station 741+67.48. These plans do not specifically call out the P.I. as a section corner, but do show at the P.I. in line with the state road centerline to the east and west and in-line with the north-south county road centerline, with the call of Section Line along the center of the north-south county road. The 1-inch diameter iron pin in concrete appears to be a typical INDOT section corner monument but no information was provided by INDOT as to when this specific monument was set. A full route survey was not performed to determine the precise station of the monument, but it is noted the distances between this monument and other similar monuments found along this stretch of road match the computed distances between stations shown on the plans within less than 0.5 foot. The relative position of this monument and a similar monument found at the southwest corner of Section 8 match the distances called out in the 1869 record within approximately 1.5 feet, as scaled by a standard scale factor of 1.00415 applied to BCS measurements from between 1860 and 1895. No excavation was performed at this corner as it falls in a state road. The iron pin in concrete was held as marking the corner.



*Kenneth E. Hedge*  
 Kenneth E. Hedge, County Surveyor

*James S. Swift*  
 James S. Swift, IN LS 2020054  
 June 23, 2021

Jackson Township  
Boone County

Eel River Township  
Hendricks County

Section 8 T17N, R2W	Section 9 T17N, R2W
Section 17 T17N, R2W	Section 16 T17N, R2W

# SECTION CORNER RECORD

SW 800-1050

## BOONE COUNTY SURVEYOR'S OFFICE

State Plane grid coordinates NAD83 (2011):

North: 1702897.30 East: 3069575.12 (U.S. survey feet)

Type of monument: One-inch diameter iron pin in concrete

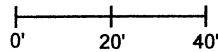
Depth: Four inches below adjacent road surface

Indiana tie card references:

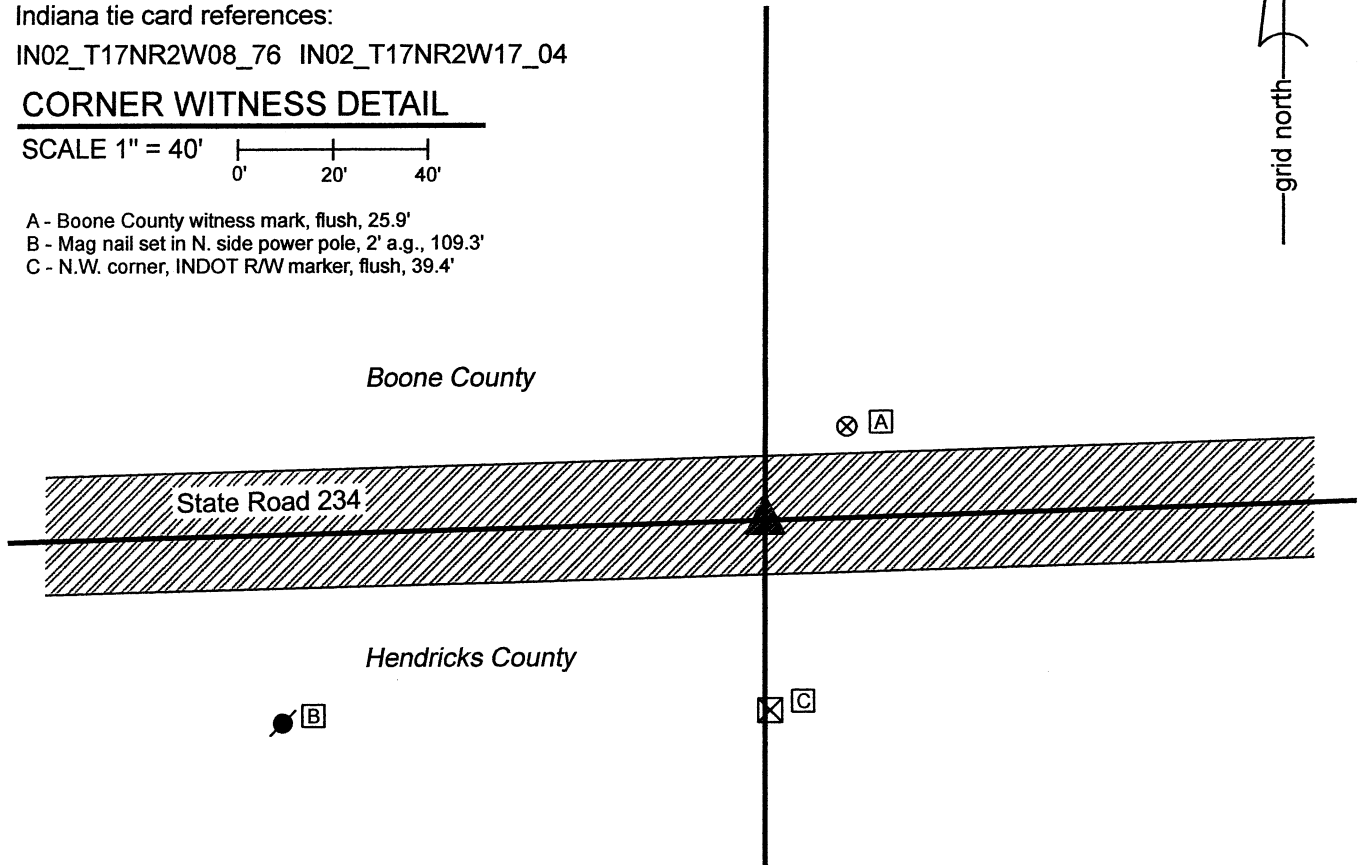
IN02\_T17NR2W08\_76 IN02\_T17NR2W17\_04

### CORNER WITNESS DETAIL

SCALE 1" = 40'



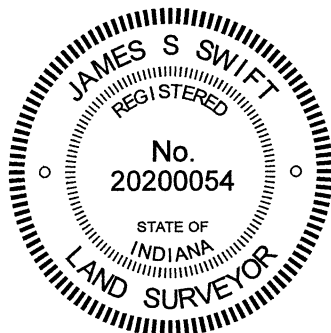
- A - Boone County witness mark, flush, 25.9'
- B - Mag nail set in N. side power pole, 2' a.g., 109.3'
- C - N.W. corner, INDOT R/W marker, flush, 39.4'



The iron pin in concrete was found and held as marking the corner.

A BCS record dated April 19, 1895 states, with respect to this corner, "Established a rock 24x8x8 not marked." No recent BCS tie cards were found referencing the corner.

The plans for State Road 234, being Proj. No. WPSS and MS-431, Indiana State Highway Commission, S.R. 43 - Jamestown Road (1936) do not specifically call out this corner. They do show north-south fences to both sides of the road with a call of P.L. along the fence to the north and a shift from 40-foot to 35-foot right-of-way on the south side. The 1-inch diameter iron pin in concrete appears to be a typical INDOT section corner monument but no information was provided by INDOT as to when this specific monument was set. A full route survey was not performed to determine the precise station of the monument, but it is noted the distances between this monument and other similar monuments found along this stretch of road match the computed distances between stations shown on the plans within less than 0.5 foot. It is also noted that the distance between this monument and a similar monument held as marking the southwest corner of Section 8 matches the distances recited in the 1895 record within 0.5 foot. No excavation was performed at this corner as it falls in a state road. The iron pin in concrete was held as marking the corner.



Kenneth E. Hedge, County Surveyor

James S. Swift, IN LS 20200054  
June 23, 2021

Jackson  
Township  
Boone  
County

Section 8  
T17N, R2W

Eel River  
Township  
Hendricks  
County

Section 17  
T17N, R2W

# SECTION CORNER RECORD

SW 800-1100

## BOONE COUNTY SURVEYOR'S OFFICE

State Plane grid coordinates NAD83 (2011):

North: 1702828.09 East: 3066900.67 (U.S. survey feet)

Type of monument: One-inch diameter iron pin in concrete

Depth: Flush with adjacent road surface

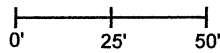
Indiana tie card references:

IN02\_T17NR2W07\_72 IN02\_T17NR2W08\_80

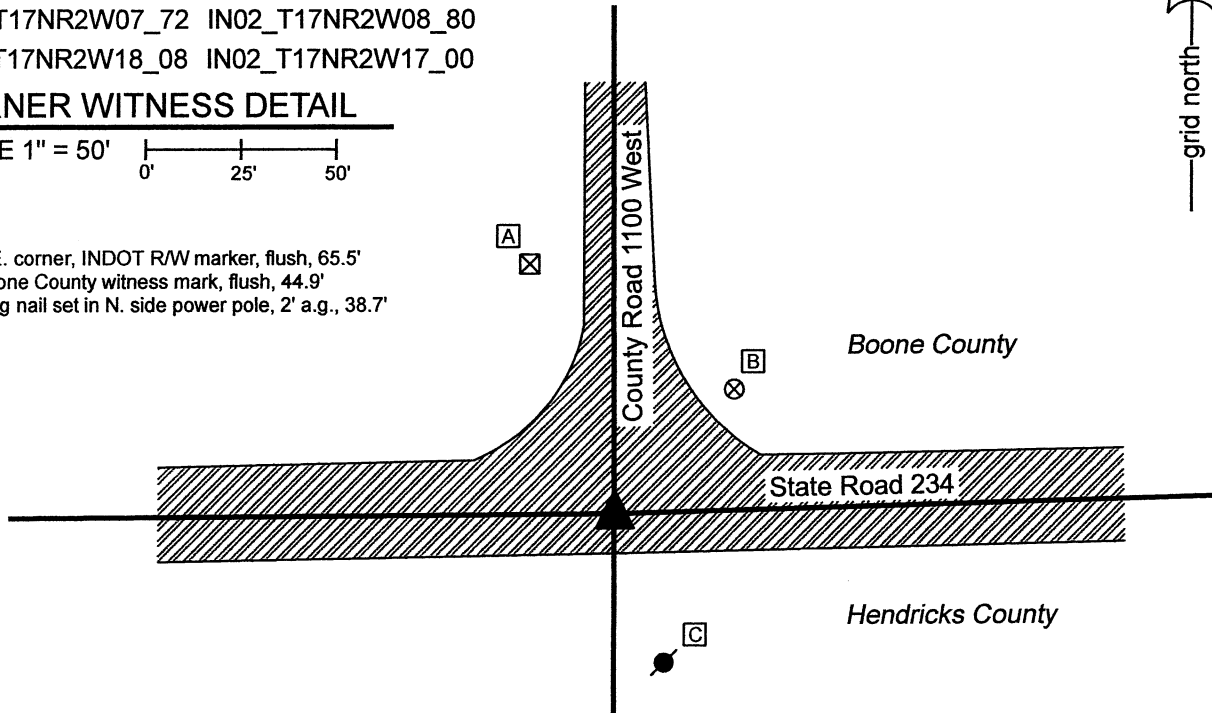
IN02\_T17NR2W18\_08 IN02\_T17NR2W17\_00

### CORNER WITNESS DETAIL

SCALE 1" = 50'



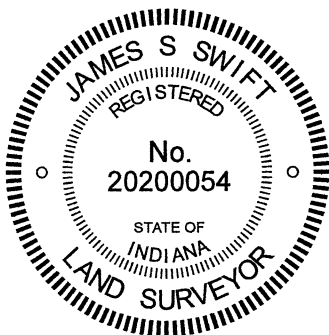
- A - S.E. corner, INDOT R/W marker, flush, 65.5'
- B - Boone County witness mark, flush, 44.9'
- C - Mag nail set in N. side power pole, 2' a.g., 38.7'



The iron pin in concrete was found and held as marking the corner.

No specific descriptions of this corner were found in the BCS Surveyor's Record beyond the original establishment of the corner as a wood post in 1820. No recent BCS tie cards were found referencing the corner.

The plans for State Road 234, being Proj. No. WPSS and MS-431, Indiana State Highway Commission, S.R. 43 - Jamestown Road (1936) show a boat spike buried 3" at P.I. Station 688+10.29. These plans do not specifically call out the P.I. as a section corner, but do show it in line with the state road centerline to the east and west and in-line with the north-south county road centerline, with the call of Section Line along the center of the north-south county road. The 1-inch diameter iron pin in concrete appears to be a typical INDOT section corner monument but no information was provided by INDOT as to when this specific monument was set. A full route survey was not performed to determine the precise station of the monument, but it is noted the distances between this monument and other similar monuments found along this stretch of road match the computed distances between stations shown on the plans within less than 0.5 foot. No excavation was performed at this corner as it falls in a state road. The iron pin in concrete was held as marking the corner.



*Kenneth E. Hedge*  
Kenneth E. Hedge, County Surveyor

*James S. Swift*  
James S. Swift, IN LS 20200054  
June 23, 2021

Jackson  
Township  
Boone  
County

Eel River  
Township  
Hendricks  
County

Section 7 T17N, R2W	Section 8 T17N, R2W
Section 18 T17N, R2W	Section 17 T17N, R2W