

# SECTION CORNER RECORD

SE 800-100

## BOONE COUNTY SURVEYOR'S OFFICE

State Plane grid coordinates NAD83 (2011):

North: 1703381.38 East: 3130420.98 (U.S. survey feet)

Type of Monument: 5/8" rebar with aluminum cap stamped 'Hendricks County Surveyor Cap'

Depth: Two inches below adjacent road surface

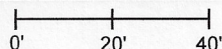
Indiana tie card references:

IN02\_T17NR1E07\_80 IN02\_T17NR1E08\_72

IN02\_T17NR1E18\_08 IN02\_T17NR1E17\_00

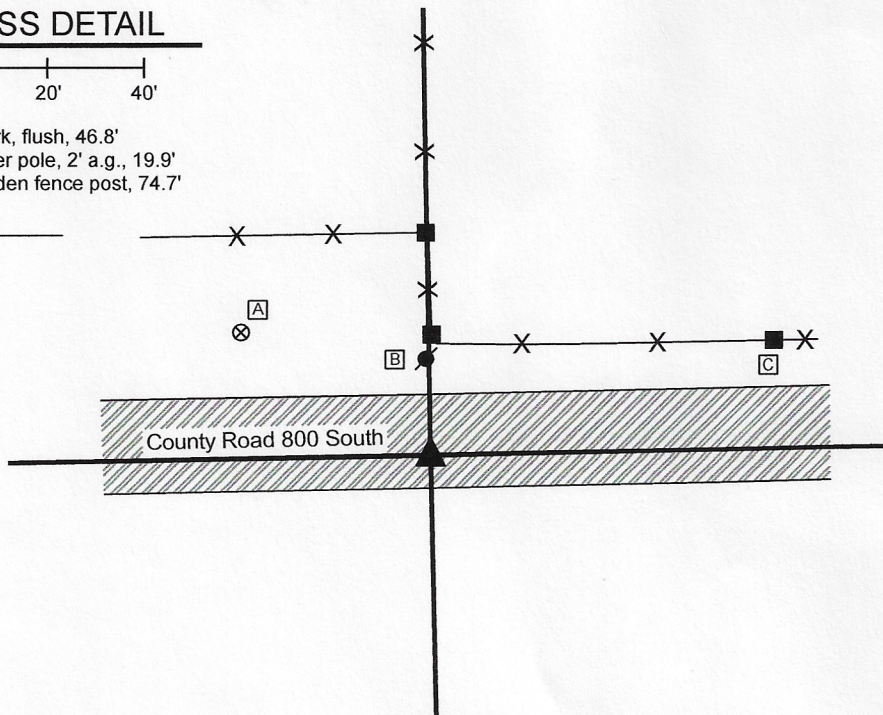
### CORNER WITNESS DETAIL

SCALE 1" = 40'



- A - Boone County witness mark, flush, 46.8'
- B - Mag nail set in S side power pole, 2' a.g., 19.9'
- C - Mag nail set in S side wooden fence post, 74.7'

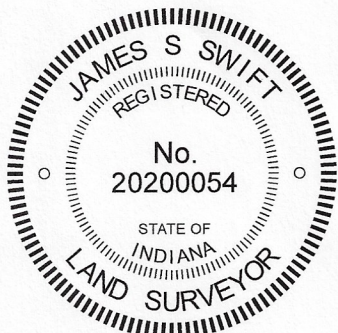
- wire fence



The rebar with Hendricks County Surveyor cap was found in place and accepted as marking the corner.

No specific descriptions of this corner were found the BCS Surveyor's Record beyond the original establishment of the corner as a wood post in 1820. No recent BCS tie cards were found referencing the corner.

A tie card provided by the Hendricks County Surveyor's Office dated March 24, 2008 states that a white limestone rock which measured 8 inches by 5 inches on top was found at 14 inches deep marking the corner. A 5/8 inch diameter rebar with metal cap stamped Hendricks County Surveyor was set over the stone. The tie card also states that a rebar with "Dodge" cap was found 4 feet north of the stone. The Hendricks County monument was found and held as the position of the corner. In 2010, a 5/8 inch rebar was also found at 3 feet north of the Hendricks County monument. This rebar is believed to remain present, but has been paved over. Both monuments are in-line with a fence to the north. The northerly rebar is close to the center of the east-west county road, but is not held as the corner.



*Kenneth E. Hedge*  
Kenneth E. Hedge, County Surveyor

*James S. Swift*  
James S. Swift, IN LS 20200054  
August 26, 2020

	Harrison Township	Perry Township
Boone County	Section 7 T17N, R1E	Section 8 T17N, R1E
Middle Township Hendricks County	Section 18 T17N, R1E	Section 17 T17N, R1E