

SECTION CORNER RECORD

SW 800-900

BOONE COUNTY SURVEYOR'S OFFICE

State Plane grid coordinates NAD83 (2011):

North: 1702885.50 East: 3077504.43 (U.S. survey feet)

Type of monument: one-inch diameter iron pin in concrete

Depth: Flush with adjacent road surface

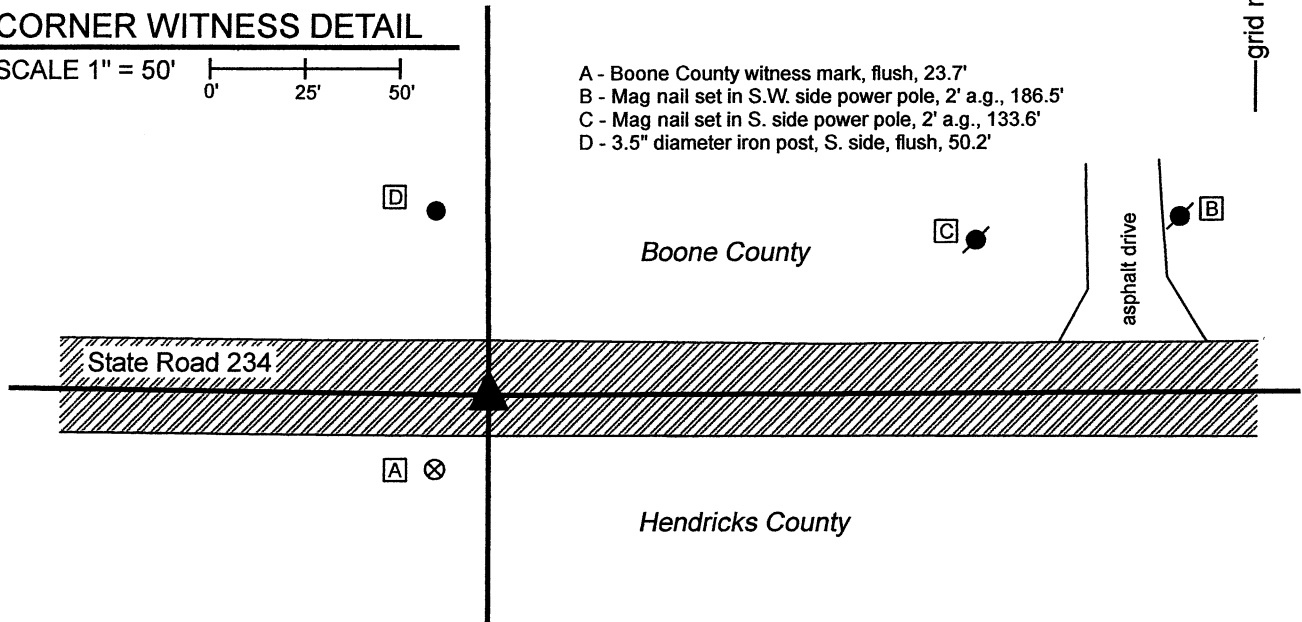
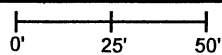
Indiana tie card references:

IN02_T17NR2W10_72 IN02_T17NR2W09_80

IN02_T17NR2W16_08 IN02_T17NR2W15_00

CORNER WITNESS DETAIL

SCALE 1" = 50'



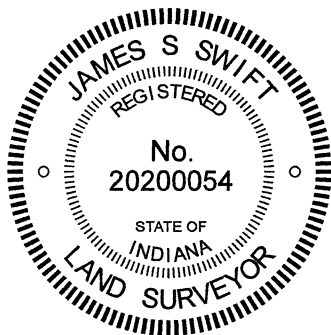
- A - Boone County witness mark, flush, 23.7'
- B - Mag nail set in S.W. side power pole, 2' a.g., 186.5'
- C - Mag nail set in S. side power pole, 2' a.g., 133.6'
- D - 3.5" diameter iron post, S. side, flush, 50.2'



The iron pin in concrete was found and held as marking the corner.

A BCS record of May 17-18, 1866 states, with respect to this corner, "Found point by measure there found roots of both trees. Also an old stake in ground at corner. Drove stake and set two rocks. Under one sandy 5.4.2-1/2. Top one 16.12.12." No recent BCS tie cards were found referencing the corner.

The plans for State Road 234, being Proj. No. WPSS and MS-431, Indiana State Highway Commission, S.R. 43 - Jamestown Road (1936) show a "hole in corner stone" at P.I. Station 794+17.23. These plans do not specifically call out the P.I. as a section corner, but do show at the P.I. in line with the state road centerline to the east and west and in-line with fences to the north and south, with the call of Section Line P.L. along the fences. The 1-inch diameter iron pin in concrete appears to be a typical INDOT section corner monument but no information was provided by INDOT as to when this specific monument was set. A full route survey was not performed to determine the precise station of the monument, but it is noted the distances between this monument and other similar monuments found along this stretch of road match the computed distances between stations shown on the plans within less than 0.5 foot. No excavation was performed at this corner as it falls in a state road. The iron pin in concrete was held as marking the corner.



Kenneth E. Hedge
Kenneth E. Hedge, County Surveyor

James S. Swift
James S. Swift, IN LS 20200054
June 23, 2021

Jackson
Township
Boone
County

Eel River
Township
Hendricks
County

Section 9 T17N, R2W	Section 10 T17N, R2W
Section 16 T17N, R2W	Section 15 T17N, R2W

SECTION CORNER RECORD

SW 800-1000

BOONE COUNTY SURVEYOR'S OFFICE

State Plane grid coordinates NAD83 (2011):

North: 1702968.05 East: 3072255.52 (U.S. survey feet)

Type of monument: One-inch diameter iron pin in concrete

Depth: Flush with adjacent road surface

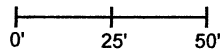
Indiana tie card references:

IN02_T17NR2W09_72 IN02_T17NR2W08_80

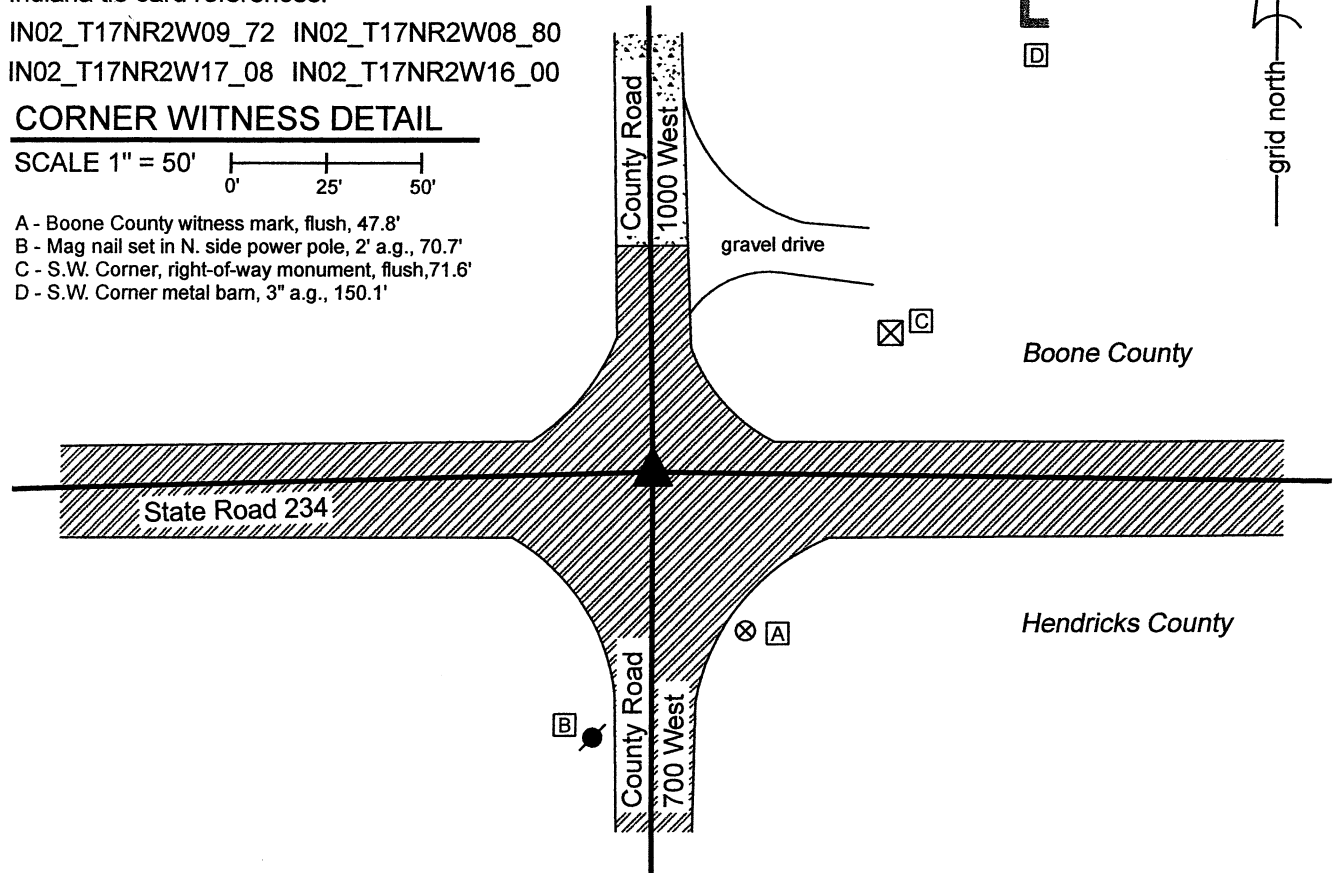
IN02_T17NR2W17_08 IN02_T17NR2W16_00

CORNER WITNESS DETAIL

SCALE 1" = 50'



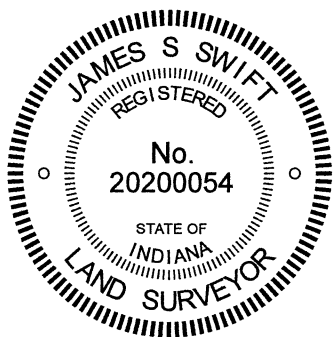
- A - Boone County witness mark, flush, 47.8'
- B - Mag nail set in N. side power pole, 2' a.g., 70.7'
- C - S.W. Corner, right-of-way monument, flush, 71.6'
- D - S.W. Corner metal bam, 3" a.g., 150.1'



The iron pin in concrete was found and held as marking the corner.

A BCS record of October 15 & 25, 1869 states, with respect to this corner, "A rock was at the Cor. Shown by a stump." No recent BCS tie cards were found referencing the corner.

The plans for State Road 234, being Proj. No. WPSS and MS-431, Indiana State Highway Commission, S.R. 43 - Jamestown Road (1936) show a stone with a hole at P.I. Station 741+67.48. These plans do not specifically call out the P.I. as a section corner, but do show at the P.I. in line with the state road centerline to the east and west and in-line with the north-south county road centerline, with the call of Section Line along the center of the north-south county road. The 1-inch diameter iron pin in concrete appears to be a typical INDOT section corner monument but no information was provided by INDOT as to when this specific monument was set. A full route survey was not performed to determine the precise station of the monument, but it is noted the distances between this monument and other similar monuments found along this stretch of road match the computed distances between stations shown on the plans within less than 0.5 foot. The relative position of this monument and a similar monument found at the southwest corner of Section 8 match the distances called out in the 1869 record within approximately 1.5 feet, as scaled by a standard scale factor of 1.00415 applied to BCS measurements from between 1860 and 1895. No excavation was performed at this corner as it falls in a state road. The iron pin in concrete was held as marking the corner.



Kenneth E. Hedge
 Kenneth E. Hedge, County Surveyor

James S. Swift
 James S. Swift, IN LS 20200054
 June 23, 2021

Jackson Township
Boone County

Eel River Township
Hendricks County

Section 8 T17N, R2W	Section 9 T17N, R2W
Section 17 T17N, R2W	Section 16 T17N, R2W