

# SECTION CORNER RECORD

# SW 800-800

## BOONE COUNTY SURVEYOR'S OFFICE

State Plane grid coordinates NAD83 (2011):

Section Corner: North: 1702852.11 East: 3082809.81 (U.S. survey feet)

N.E. Corner of pillar: North: 1702852.40 East: 3082810.11 (U.S. survey feet)

Type of monument: top, center of 8" diameter concrete monument

Two inches above ground, located below N.E. corner of brick pillar

Indiana tie card references:

IN02\_T17NR2W11\_72 IN02\_T17NR2W10\_80

IN02\_T17NR2W15\_08 IN02\_T17NR2W14\_00

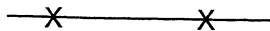
### CORNER WITNESS DETAIL

SCALE 1" = 40'

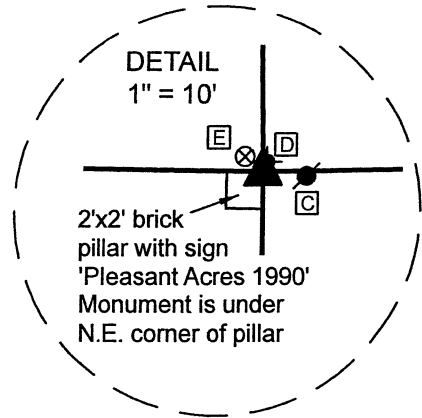
0' 20' 40'



- vinyl slat fence

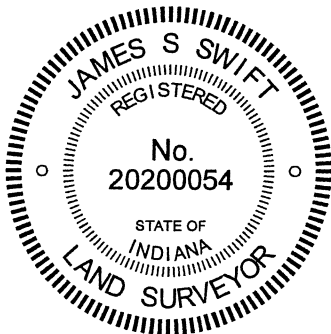
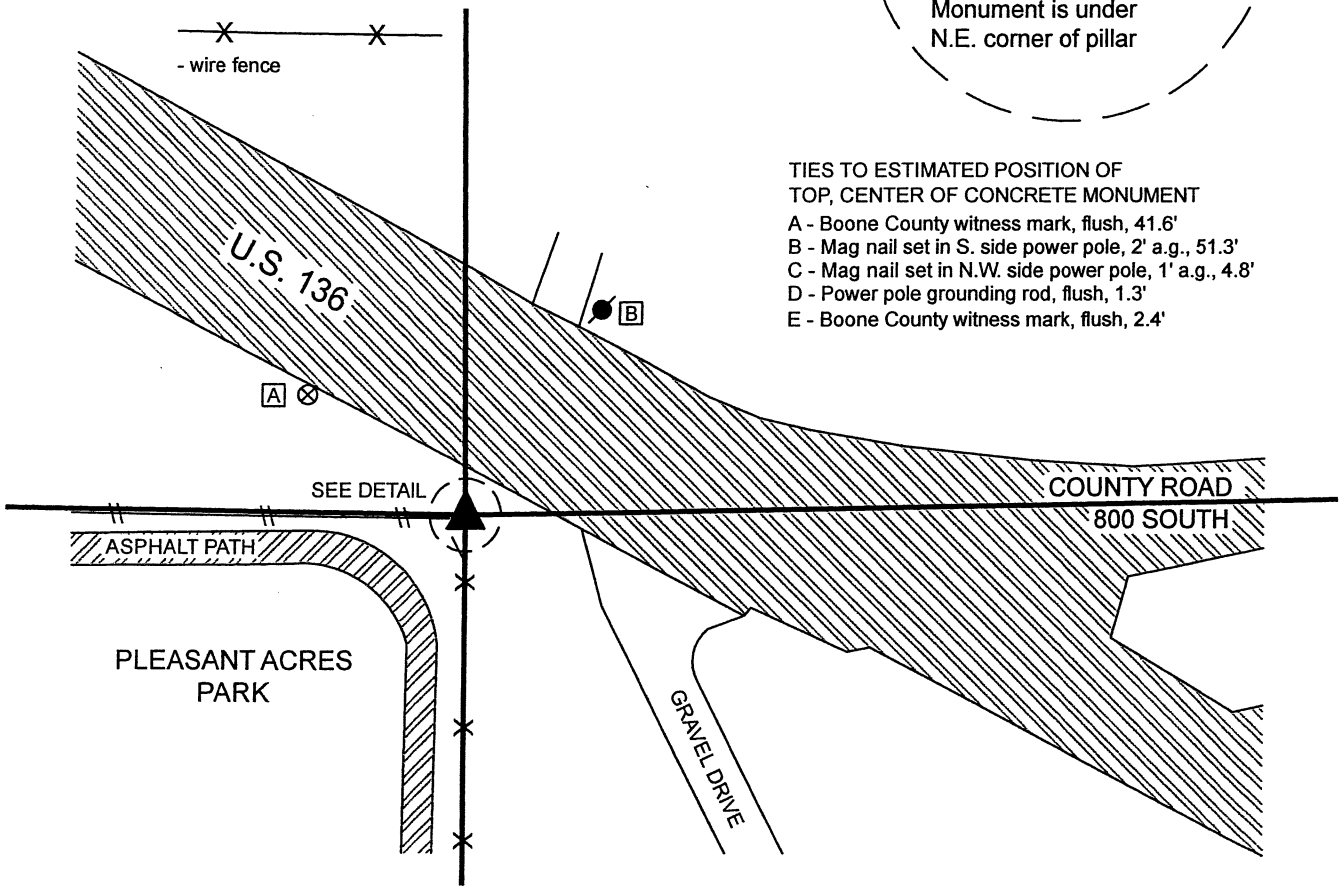


- wire fence



TIES TO ESTIMATED POSITION OF TOP, CENTER OF CONCRETE MONUMENT

- A - Boone County witness mark, flush, 41.6'
- B - Mag nail set in S. side power pole, 2' a.g., 51.3'
- C - Mag nail set in N.W. side power pole, 1' a.g., 4.8'
- D - Power pole grounding rod, flush, 1.3'
- E - Boone County witness mark, flush, 2.4'



*Kenneth E. Hedge*  
Kenneth E. Hedge, County Surveyor

*James S. Swift*  
James S. Swift, IN LS 20200054

January 27, 2021 PAGE 1 OF 2

Jackson Township  
Boone County

Eel River Township  
Hendricks County

Section 10 T17N, R2W	Section 11 T17N, R2W
Section 15 T17N, R2W	Section 14 T17N, R2W

BOONE COUNTY SURVEYOR'S OFFICE

The concrete monument marking the corner is situated under the northeast corner of a 2-foot by 2-foot brick pillar with a placard on the north side stating "Pleasant Acres 1990."

No specific descriptions of this corner were found in the BCS Surveyor's Record beyond the original establishment of the corner as a wood post in 1820.

A Location Control Route Survey by William A. Schmidt, IN LS No. 87001, recorded as Instrument 9800010682 in the Office of the Hendricks County Surveyor states, with respect to this corner, "Found 203 diameter concrete monument with hole in center protruding 50 on an east west fence line at the apparent NW corner of Section 14-T17N-R2W. No information on corner available from Hendricks County Surveyor's Office. The corner uncertainty is estimated to be +/- 1 meter." It is noted that all dimensions on this survey are in metric units. The reference to the number 203 represents a reference to millimeters, which equates to 8 inches. The number 50 is also stated in millimeters, which equates to 2 inches.

The plat of the minor subdivision, Hillview Estates #2, certified by Jerry L. Carter, IN LS No. S0350, recorded as Instrument 200130408 in the Office of the Hendricks County Surveyor shows the corner as "Conc. Monument (Fnd)"

An ALTA/ACSM Land Title Survey by Joshua David Werner, IN LS No. 21200020, recorded as Instrument 2019000353 in the Office of the Boone County Recorder, shows the corner as a 5/8" rebar with cap stamped "Schneider Firm "0001" Set. The Surveyor's Report for this survey states, "A rebar was set at the apparent Southeast Corner of said Southeast Quarter, and the uncertainty in its location is unknown. A drill hole was found in a concrete post monumenting the corner during prior field work by The Schneider Corporation." The report references the two documents noted above as recorded in the Hendricks County Recorder's Office.

This corner was investigated over the course of several years. Extensive surveying was performed along the section line to the west, locating numerous rebars and posts.

On first sight, it may be observed that the base of the 2-foot by 2-foot brick pillar at the northeast corner of the Pleasant Acre Park, Jamestown, Indiana, is uniform, except for the northeast corner of the pillar. Under this corner of the pillar, the north and east edges of a cylindrical piece of concrete are visible. The top of this piece of concrete is not visible, as it is situated under the brick pillar. The concrete object protrudes approximately 2 inches out of the ground. Upon preliminary investigation, no other monument was found in the immediate vicinity of the corner. Investigation of the area indicates that the numerous rebars found along the line to the west generally fit with a line which terminates at this concrete object. This observation is complicated by the fact that two different monuments have been held to mark the south quarter corner of Section 11, being the same as the north quarter corner of Section 15 (see BCS Corner SW 800-850). But even taking this complication into consideration, the concrete object under the brick pillar fits reasonably well with found monumentation to the west and also fits with fence evidence to the south and west.

The Location Control Route Survey referenced above shows a diagram for the corner which demonstrates the relative position of the corner with respect to three distance ties. Two of the ties appear to be no longer present, but one of the ties remains, being a nail in a bottle cap in the north edge of the power pole adjacent to the corner and slightly east of the brick pillar. This tie shows a distance of 1.567 meters, which fits precisely with the estimated position of the top of the concrete object below the corner of the brick pillar. It is also noted that, based on the visible north and east edges, the concrete object is 8 inches in diameter, matching the call in the Route Survey. As noted above, it protrudes 2 inches out of the ground, also matching the call in the Route Survey.

Prior to 2018, the only monument which appeared to be marking the corner was the partially visible concrete monument. No documentation had been produced at that time, as the position of the corner remained uncertain and sufficient proof had not yet been produced to reliably call the monument the corner. However, in November, 2018, a rebar bearing a plastic cap stamped "Schneider Firm 0001" was set near the southwest corner of the pillar. The aforementioned ALTA/ACSM Land Title Survey states that the rebar was set in place of a concrete monument previously found. Upon contact, Josh Werner carefully studied the data sets from which the concrete monument was stated to have been previously found. His review of the data led him to the conclusion that, although a previous crew had stated the monument to be found, in fact that crew had computed the position of the monument with respect to remote data shown on the Schmidt Route Survey, and labelled it incorrectly in the data set as having been found whereas it was actually computed. Mr. Werner concluded that minimal confidence should be attached in the position of the rebar marking the corner.

Further investigation into the origin of the brick pillar yielded no certain date of its construction. It would be logical to conclude that the pillar was built after the date of the two surveys which held the monument located under the pillar, but this cannot be stated with certainty.

Given the references to the monument on the aforementioned documents, the harmony of the position of the monument with the evidence of other survey monuments and evidence of fences to the south and west, and given that the monument appears to be of the same dimensions and height as that called in the Schmidt Route Survey and also appears to fit precisely with the one remaining distance tie shown on that survey, the existing monument is held as marking the corner.

The monument remains inaccessible, below the base of the brick pillar. The coordinates shown hereon represent the position of the northeast corner of the brick pillar as located in the field and the position of the center of the monument, as estimated with respect to the dimensions of the monument. The rebar with Schneider cap remains near the southwest corner of the pillar, 2.4 feet south and 1.8 feet west of the computed position of the center of the monument.

# SECTION CORNER RECORD

SW 800-900

## BOONE COUNTY SURVEYOR'S OFFICE

State Plane grid coordinates NAD83 (2011):

North: 1702885.50 East: 3077504.43 (U.S. survey feet)

Type of monument: one-inch diameter iron pin in concrete

Depth: Flush with adjacent road surface

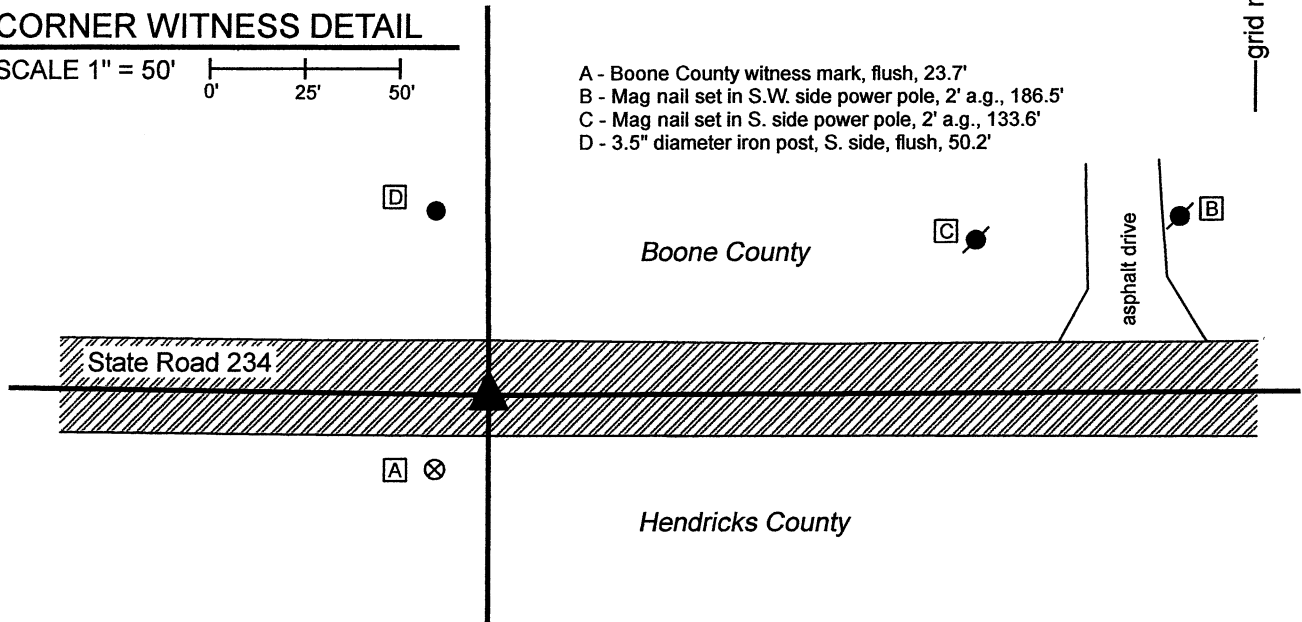
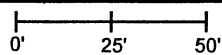
Indiana tie card references:

IN02\_T17NR2W10\_72 IN02\_T17NR2W09\_80

IN02\_T17NR2W16\_08 IN02\_T17NR2W15\_00

### CORNER WITNESS DETAIL

SCALE 1" = 50'



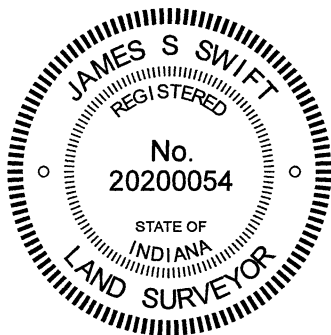
- A - Boone County witness mark, flush, 23.7'
- B - Mag nail set in S.W. side power pole, 2' a.g., 186.5'
- C - Mag nail set in S. side power pole, 2' a.g., 133.6'
- D - 3.5" diameter iron post, S. side, flush, 50.2'



The iron pin in concrete was found and held as marking the corner.

A BCS record of May 17-18, 1866 states, with respect to this corner, "Found point by measure there found roots of both trees. Also an old stake in ground at corner. Drove stake and set two rocks. Under one sandy 5.4.2-1/2. Top one 16.12.12." No recent BCS tie cards were found referencing the corner.

The plans for State Road 234, being Proj. No. WPSS and MS-431, Indiana State Highway Commission, S.R. 43 - Jamestown Road (1936) show a "hole in corner stone" at P.I. Station 794+17.23. These plans do not specifically call out the P.I. as a section corner, but do show at the P.I. in line with the state road centerline to the east and west and in-line with fences to the north and south, with the call of Section Line P.L. along the fences. The 1-inch diameter iron pin in concrete appears to be a typical INDOT section corner monument but no information was provided by INDOT as to when this specific monument was set. A full route survey was not performed to determine the precise station of the monument, but it is noted the distances between this monument and other similar monuments found along this stretch of road match the computed distances between stations shown on the plans within less than 0.5 foot. No excavation was performed at this corner as it falls in a state road. The iron pin in concrete was held as marking the corner.



*Kenneth E. Hedge*  
Kenneth E. Hedge, County Surveyor

*James S. Swift*  
James S. Swift, IN LS 20200054  
June 23, 2021

Jackson  
Township  
Boone  
County

Eel River  
Township  
Hendricks  
County

Section 9 T17N, R2W	Section 10 T17N, R2W
Section 16 T17N, R2W	Section 15 T17N, R2W