

SECTION CORNER RECORD

SW 800-100

BOONE COUNTY SURVEYOR'S OFFICE

State Plane grid coordinates NAD83 (2011):

North: 1703085.33 East: 3119962.56 (U.S. survey feet)

Type of monument: Harrison, 4" disk 'Section Corner'

Depth: Flush with surrounding ground

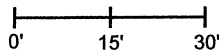
Indiana tie card references:

IN02_T17NR1W12_72 IN02_T17NR1W11_80

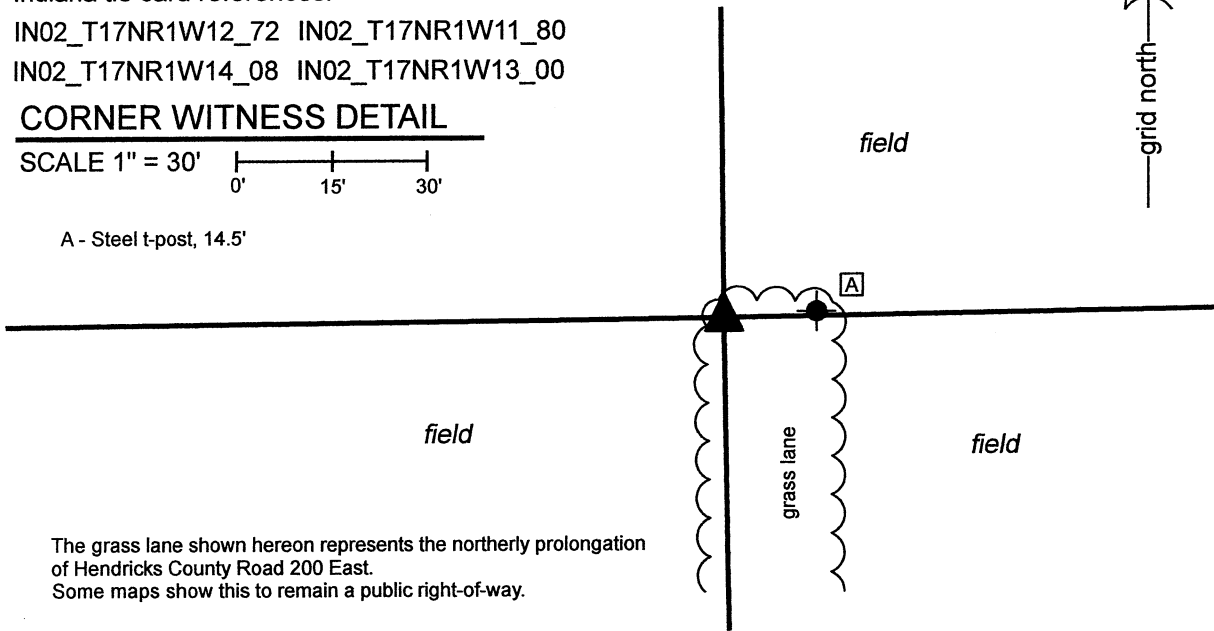
IN02_T17NR1W14_08 IN02_T17NR1W13_00

CORNER WITNESS DETAIL

SCALE 1" = 30'



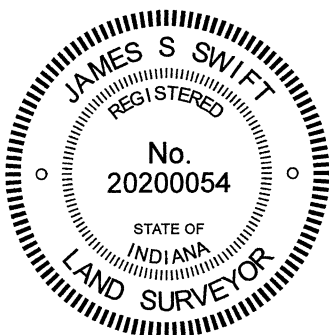
A - Steel t-post, 14.5'



The grass lane shown hereon represents the northerly prolongation of Hendricks County Road 200 East. Some maps show this to remain a public right-of-way.

The Harrison monument was set in place of a 1/2-inch diameter rebar found and accepted as the best available evidence of the corner. No specific descriptions of this corner were found in the BCS Surveyor's Record beyond the original establishment of the corner as a wood post in 1821. No recent BCS tie cards were found referencing the corner. Field notes provided by the Hendricks County Surveyor's Office indicate that substantial excavation was performed in the vicinity of this corner in May, 2013, but no stone was found. The field notes indicate that the excavation area may have been slightly south of the rebar which is known to have been existing at the time. No mention of the rebar is made in the field notes. The 1/2-inch diameter rebar was found by this office in the Spring of 2011. Revisited in Winter, 2021, the rebar was found in the same position, evidently undisturbed. The position of the rebar was tested with respect to the available evidence of adjacent corners. It is observed that, although the rebar was on the west edge of an existing grass lane, it is at the northerly extension of the approximate center of the asphalt roadway which terminates at a point 812 feet south of the corner. The rebar was also observed to be at almost precisely the double-distance prolongation of a line connecting a rebar found with Hendricks County cap at the east quarter corner of Section 14 and the approximate center of the road at a point in-line with an existing ancient fence to the East 1/4 mile south of the subject corner. Furthermore, the position of the rebar lined up remarkably well with the available evidence of the south line of Section 12, being an ancient wood post found 1/4 mile east of the subject corner, a stone at the 1/16 corner which coincides with the intersection of Boone County Roads 800 South and 25 West, and with the position of the southeast corner of Section 12, as established with respect to the position of a stone found at the southwest corner of Section 7, T17N, R1E. Hence, the position of the rebar was found to fit well with the available evidence of adjacent corners to the south and to the east. Extensive probing and manual excavation in February and March, 2021 did not reveal further evidence of the corner. The rebar was held as marking the corner and was replaced with a Harrison monument on March 9, 2021. While removing the rebar from the ground, the patterns of rust and deterioration observed indicate that it had been present and undisturbed in the same position for a very long time.

A survey recorded as Instrument 200800008588 in the Office of the Boone County Recorder shows the corner as a 1-inch iron pin found. No monument of this dimension and character was found in the vicinity of the corner.



Kenneth E. Hedge
 Kenneth E. Hedge, County Surveyor

James S. Swift
 James S. Swift, IN LS 20200054
 March 30, 2021

Harrison Township
Boone County

Middle Township
Hendricks County

Section 11 T17N, R1W	Section 12 T17N, R1W
Section 14 T17N, R1W	Section 13 T17N, R1W

SECTION CORNER RECORD

SW 800-150

BOONE COUNTY SURVEYOR'S OFFICE

State Plane grid coordinates NAD83 (2011):

North: 1703056.02 East: 3117314.56 (U.S. survey feet)

Type of monument: 5/8 inch diameter rebar with metal cap stamped "Hendricks County Surveyor"

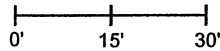
Depth: 1 inch below adjacent pavement

Indiana tie card references:

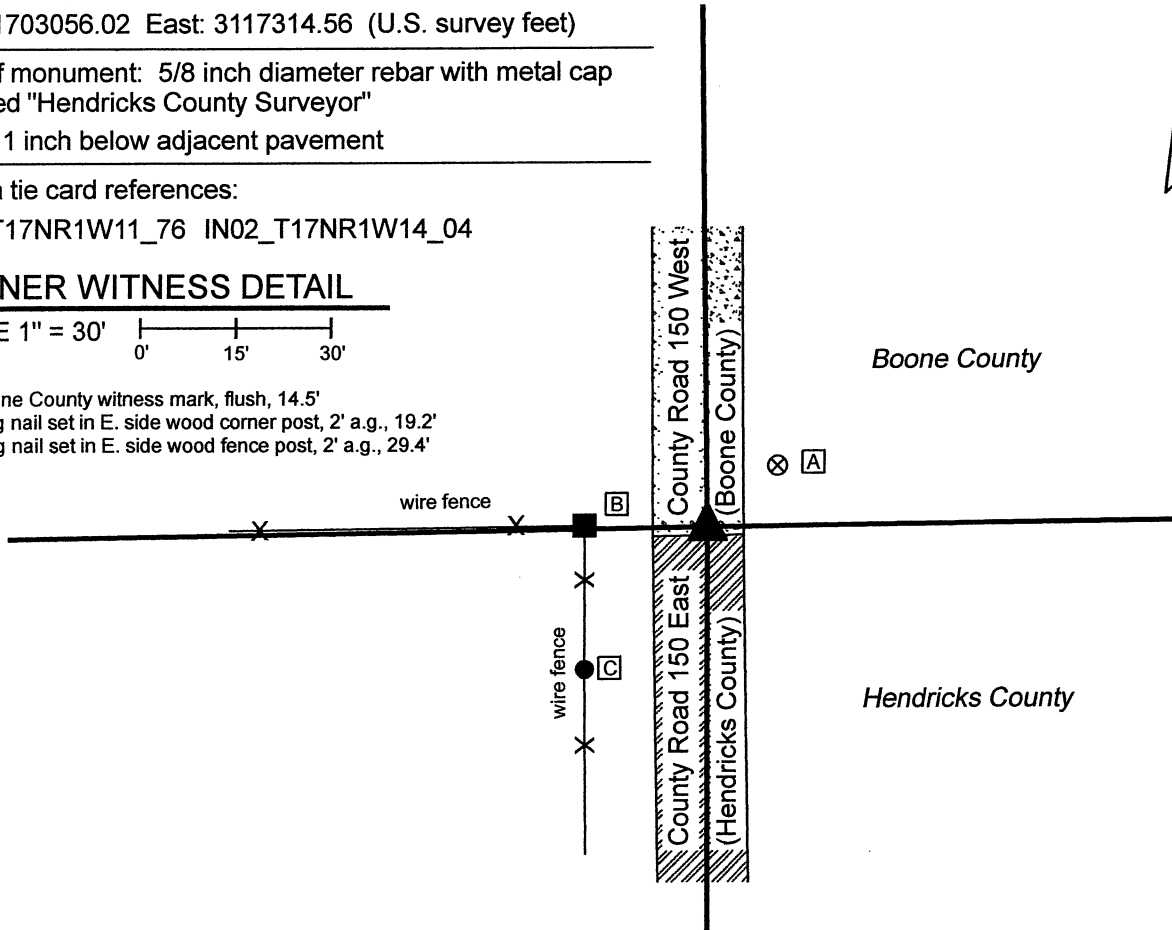
IN02_T17NR1W11_76 IN02_T17NR1W14_04

CORNER WITNESS DETAIL

SCALE 1" = 30'



- A - Boone County witness mark, flush, 14.5'
- B - Mag nail set in E. side wood corner post, 2' a.g., 19.2'
- C - Mag nail set in E. side wood fence post, 2' a.g., 29.4'



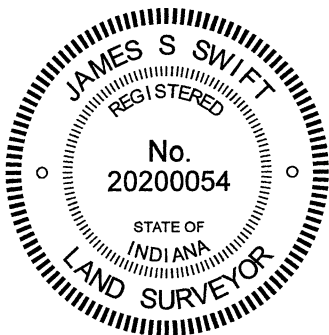
The rebar with Hendricks County Surveyor cap was found in place and held as marking the corner.

This monument is shown on field notes dated May 14, 2013 and provided by the Office of the Hendricks County Surveyor. The notes show the rebar as being set over a stone of dimensions 5 by 10 by 25 inches found at 8 1/2 inches deep.

A BCS tie card dated April 25, 1883 states, with respect to this corner, "Reest. from O.B.T. Stone 22.12.5 +." No recent BCS tie cards were found referencing this corner. The stone was not excavated and exposed. The monumentation and report of the Hendricks County Surveyor is accepted.

Given the uncertainties in measuring the size of irregular objects, the dimensions for the stone as reported by the Hendricks County Surveyor are sufficiently similar to the dimensions recited in the 1883 BCS record as to consider that this is most likely the same monument as was set by the Boone County Surveyor in 1883. In 2011, prior to excavation by Hendricks County, a railroad spike was found 1.1 feet north and 0.8 feet west of the position of the corner as currently monumented.

This corner was originally established as a wood post in 1820.



Kenneth E. Hedge
Kenneth E. Hedge, County Surveyor

James S. Swift
James S. Swift, IN LS 20200054
March 30, 2021

Harrison Township
Boone County

Section 11
T17N, R1W

Middle Township
Hendricks County

Section 14
T17N, R1W