

SECTION CORNER RECORD

SE 800-400

BOONE COUNTY SURVEYOR'S OFFICE

State Plane grid coordinates NAD83 (2011):

Witness Rebar: North: 1703675.49 East: 3146380.85 (U.S. survey feet)

Section Corner: North: 1703665.99 East: 3146380.98 (U.S. survey feet)

Type of monument: 5/8" diameter rebar with cap stamped

'Boone County Surveyor', set as witness, on line, 9.5' north of corner

Depth: Three inches above surrounding ground

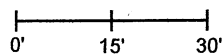
Indiana tie card references:

IN02_T17NR1E11_72 IN02_T17NR1E10_80

IN02_T17NR1E15_08 IN02_T17NR1E14_00

CORNER WITNESS DETAIL

SCALE 1" = 30'

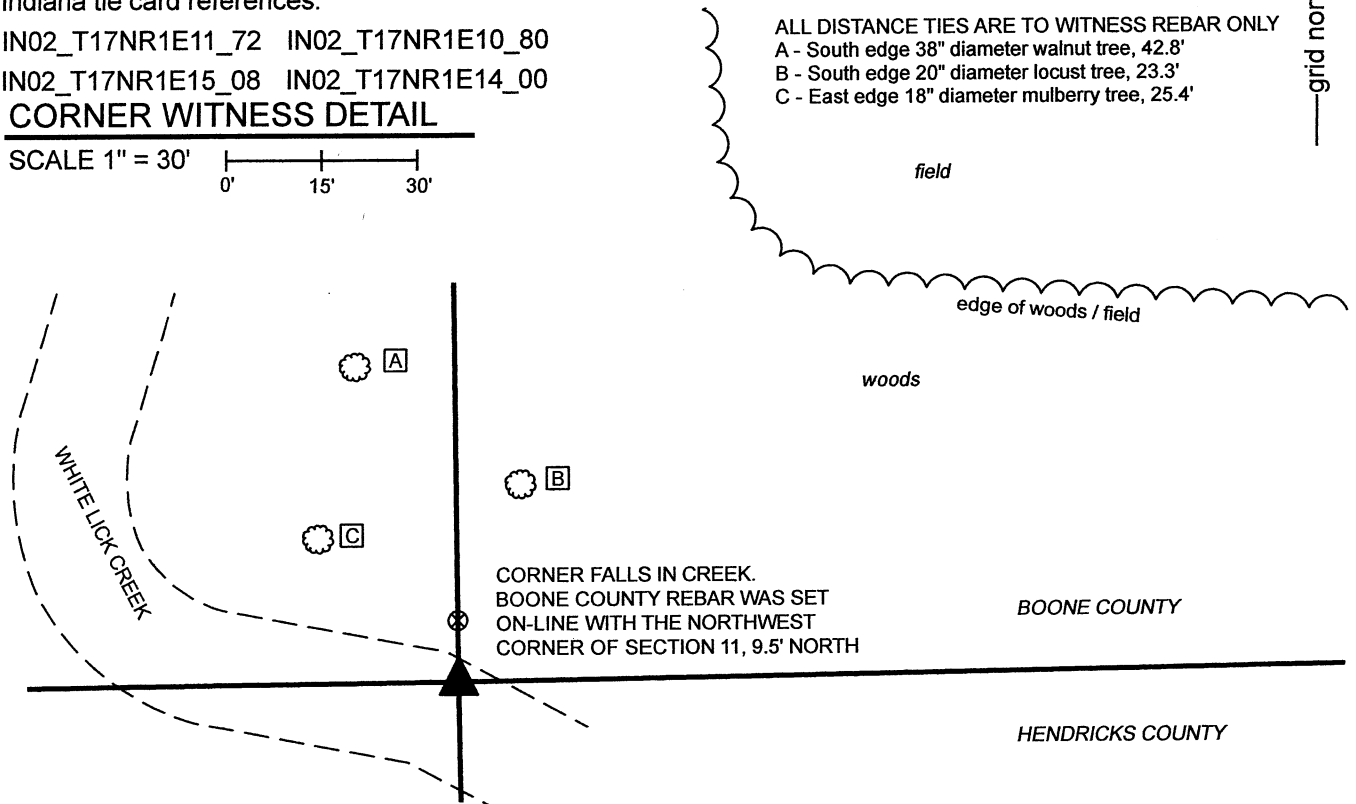


ALL DISTANCE TIES ARE TO WITNESS REBAR ONLY

A - South edge 38" diameter walnut tree, 42.8'

B - South edge 20" diameter locust tree, 23.3'

C - East edge 18" diameter mulberry tree, 25.4'



CORNER FALLS IN CREEK.
 BOONE COUNTY REBAR WAS SET
 ON-LINE WITH THE NORTHWEST
 CORNER OF SECTION 11, 9.5' NORTH

BOONE COUNTY

HENDRICKS COUNTY

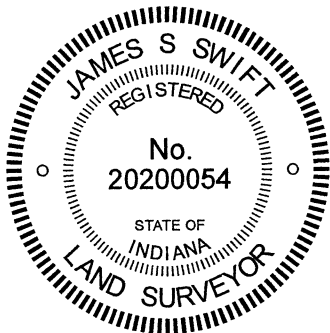
The witness rebar was set 9.5 feet north of a computed position of the corner.

No specific descriptions of this corner were found in the BCS Surveyor's Record beyond the original establishment of the corner as a wood post in 1820. Hendricks County records call for a stone of dimensions 8x10x12 inches marking the corner. Reconnaissance and excavation by the Hendricks County Surveyor's Office in December, 2017 did not yield reliable evidence of the corner.

This corner is shown as being a wood post on a survey by Jerry L. Carter, LS S0350, dated March 19, 2002 and recorded as Instrument 0208419 in the Office of the Boone County Recorder. This position was computed with respect to other monuments shown on the Carter survey and recovered in the field. The computed position of the post falls within the banks of White Lick Creek as it currently exists and the post was not found. The computed position for the post agrees precisely with a rebar found marking the southeast corner of the southwest quarter of Section 11, said rebar being at the midpoint of the line connecting the subject corner and south quarter corner of Section 11 (see BCS Corner SE 800-450), and said rebar being 2.4 feet east of a wood corner post marking historical occupation at said quarter-quarter corner.

Fragments of north-south fence were found in the vicinity of the section line north of the creek. These fence fragments generally agree with the position of the line as computed with respect to the Carter survey but no standing fence or strong evidence of an old fence on the ground was found and it appears that the fencing has been mostly removed from the area.

As the corner falls in the creek, a 36-inch length of 5/8-inch diameter rebar was set on the section line as a witness, 9.5 feet north of the corner.



Kenneth E. Hedge
 Kenneth E. Hedge, County Surveyor

James S. Swift
 James S. Swift, IN LS 20200054
 November 23, 2021

Perry
 Township
 Boone
 County

Brown
 Township
 Hendricks
 County

Section 10 T17N, R1E	Section 11 T17N, R1E
Section 15 T17N, R1E	Section 14 T17N, R1E