

SECTION CORNER RECORD

SW 700-100

BOONE COUNTY SURVEYOR'S OFFICE

State Plane grid coordinates NAD83 (2011):

North: 1708374.10 East: 3119891.04 (U.S. survey feet)

Type of monument: Harrison, 4" disk 'Section Corner'

Depth: Six inches below adjacent road surface

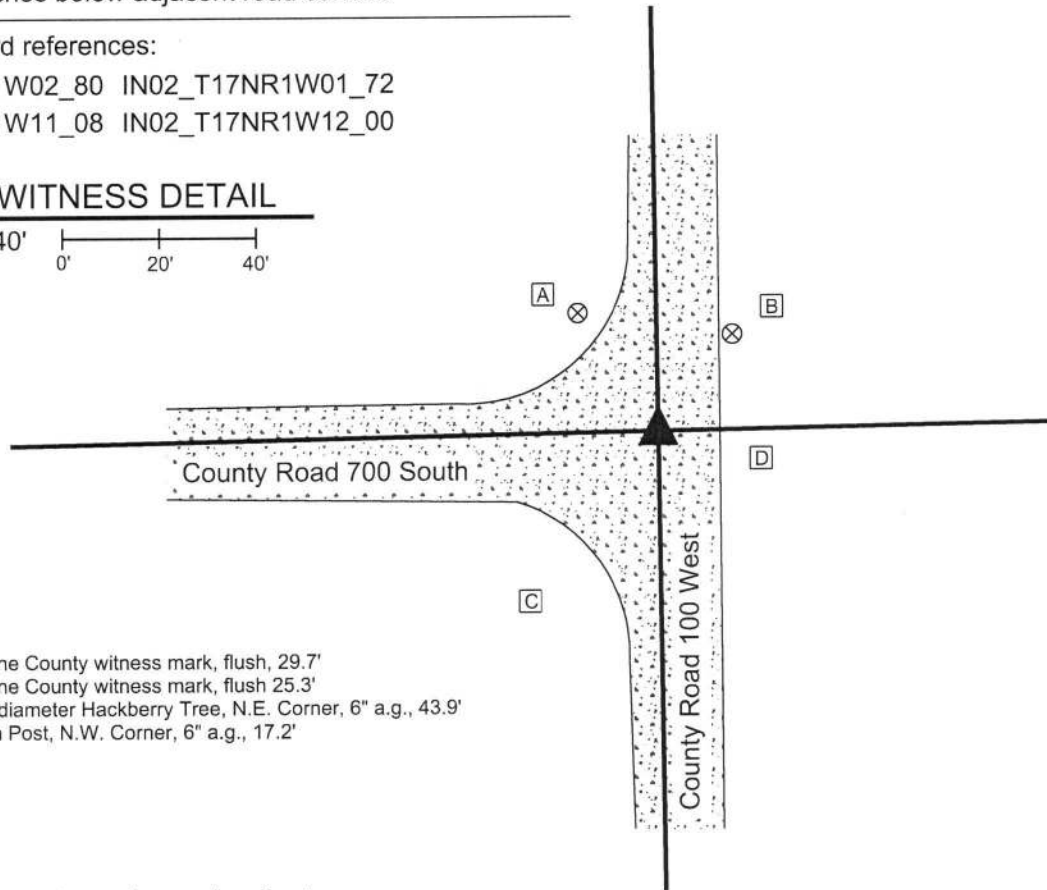
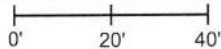
Indiana tie card references:

IN02_T17NR1W02_80 IN02_T17NR1W01_72

IN02_T17NR1W11_08 IN02_T17NR1W12_00

CORNER WITNESS DETAIL

SCALE 1" = 40'



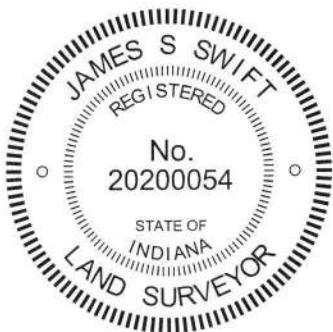
- A - Boone County witness mark, flush, 29.7'
- B - Boone County witness mark, flush 25.3'
- C - 24" diameter Hackberry Tree, N.E. Corner, 6" a.g., 43.9'
- D - Sign Post, N.W. Corner, 6" a.g., 17.2'

The Harrison monument was set over a stone found.

A BCS record of April 23-24, 1881 states, with respect to this corner, "Reestablished from O.B. Tree. Stone as place +." This is interpreted to mean that the position of the corner was found from an original bearing tree and that a stone was placed, or found in place, with an etched + mark. No recent BCS tie cards were found referencing this corner.

Excavation was performed at this corner on April 4, 2019. Prior to excavation, a section of 5/8 inch diameter rebar was found in the approximate center of the intersection. The origin of the rebar is not known. As found, the rebar was bent substantially toward the north at approximately 2 inches below grade. Excavation revealed a stone found at 14 inches deep, west and slightly north of the rebar. The top 8 inches of the stone were exposed, at which point the stone measured 9 inches N-S by 9 inches E-W. The stone has a distinct, flat top which is 7 inches N-S by 5 inches E-W. A vague mark was visible on the top of the stone, though it was evident that a road grader has scraped the top of the stone repeatedly, making the mark shallow and hard to confirm as having been purposely etched into the stone. Excavation along the east edge of the stone indicated that it is 12 inches tall. The stone is embedded in the clay layer below the road, protruding approximately 2 inches into the road bed. The stone was accepted as marking the corner and was left in place. A Harrison monument was set directly over the center of the top of the stone. The rebar, removed during excavation, had been 2.9 feet east and 1.1 foot south of the top, center of the stone.

This corner was originally established as a wood post in 1820.



Kenneth E. Hedge
 Kenneth E. Hedge, County Surveyor

James S. Swift
 James S. Swift, IN LS 20200054
 April 30, 2019

Harrison Township

Section 2 T17N, R1W	Section 1 T17N, R1W
Section 11 T17N, R1W	Section 12 T17N, R1W

SECTION CORNER RECORD

SW 700-200

BOONE COUNTY SURVEYOR'S OFFICE

State Plane grid coordinates NAD83 (2011):

North: 1708320.48 East: 3114596.24 (U.S. survey feet)

Type of monument: Harrison, 4" disk 'Section Corner'

Depth: One inch above adjacent ground.

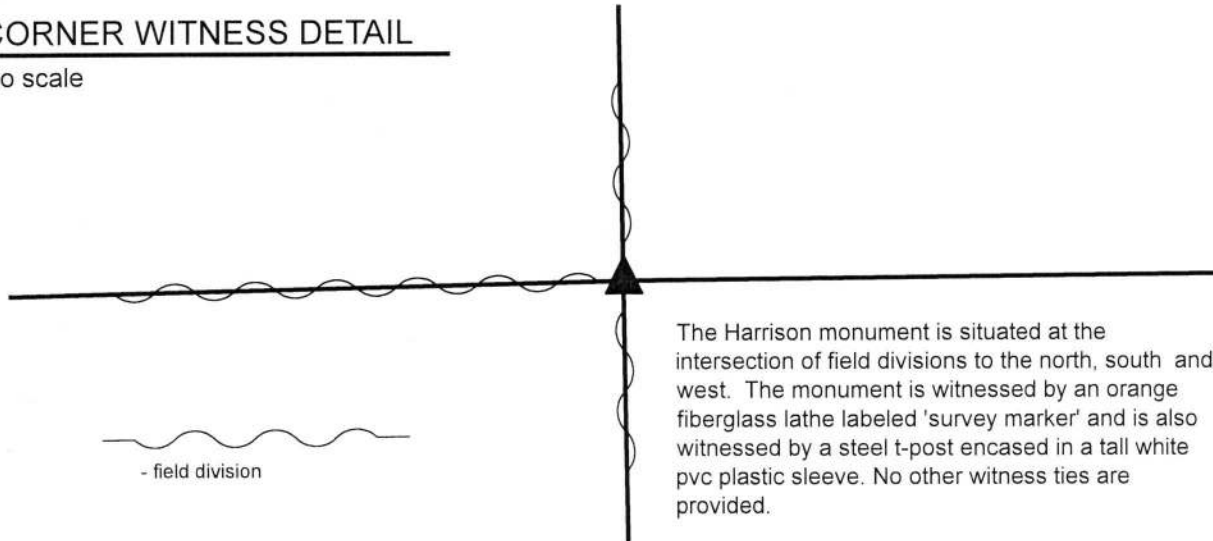
Indiana tie card references:

IN02_T17NR1W03_80 IN02_T17NR1W02_72

IN02_T17NR1W10_08 IN02_T17NR1W11_00

CORNER WITNESS DETAIL

No scale



The Harrison monument is situated at the intersection of field divisions to the north, south and west. The monument is witnessed by an orange fiberglass lathe labeled 'survey marker' and is also witnessed by a steel t-post encased in a tall white pvc plastic sleeve. No other witness ties are provided.

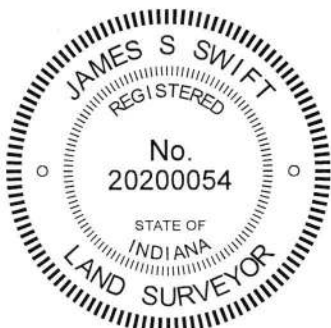
The Harrison monument was set over a stone found.

A BCS record dated April 22-24, 1883 states, with respect to this corner, "Reest. stone from O.B. tree. Stone as place +."

No recent BCS tie cards were found referencing this corner.

Excavation was performed at this corner on September 27, 2019. Prior to excavation, a steel t-post within a tall white PVC plastic sleeve was observed at the intersection of field divisions to the north, south and west. Excavation revealed that the t-post was driven into the base of an old wood corner post, broken off at ground level. The base of the post was observed to be cedar, 8 inch by 8 inch square. Excavation around the post revealed numerous small rocks and one large rock. The large rock is approximately 1 foot north of the base of the post. The top of this stone was found at 10 inches below grade. The stone was observed to be 21 inches E-W by 11 inches N-S with the top 14 inches exposed. The south side of the stone is flat and vertical and clearly the stone is much larger than the just the exposed 14 inches. A vague etched "+" mark was observed on the top of the stone at the high point, near the south edge of the stone. The stone was clearly not bracing the post and was held as marking the corner. The mark on the stone was held as the specific position of the corner. The top of the stone and the south edge of the stone were encased in concrete and a Harrison monument was set over the etched mark on the stone, anchored primarily to the vertical south edge of the stone. No rebars or other artificial evidence were found in the vicinity of the post.

This corner was originally established as a wood post in 1820.




Kenneth E. Hedge, County Surveyor


James S. Swift, IN LS 20200054
October 15, 2019

Harrison Township

Section 3 T17N, R1W	Section 2 T17N, R1W
Section 10 T17N, R1W	Section 11 T17N, R1W

SECTION CORNER RECORD

SW 750-100

BOONE COUNTY SURVEYOR'S OFFICE

State Plane grid coordinates NAD83 (2011):

North: 1705739.77 East: 3119927.37 (U.S. survey feet)

Type of monument: Harrison, 4" disk 'Section Corner'

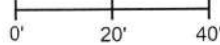
Depth: Six inches below adjacent road surface

Indiana tie card references:

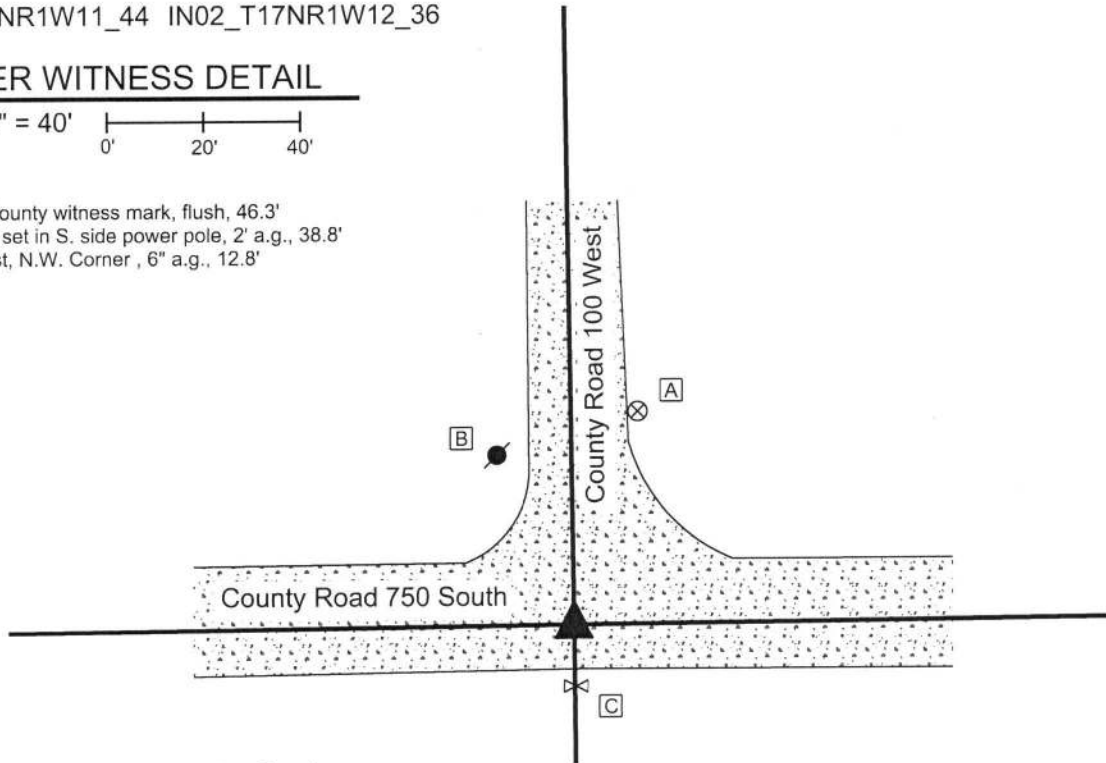
IN02_T17NR1W11_44 IN02_T17NR1W12_36

CORNER WITNESS DETAIL

SCALE 1" = 40'



- A - Boone County witness mark, flush, 46.3'
- B - Mag nail set in S. side power pole, 2' a.g., 38.8'
- C - Sign Post, N.W. Corner, 6" a.g., 12.8'

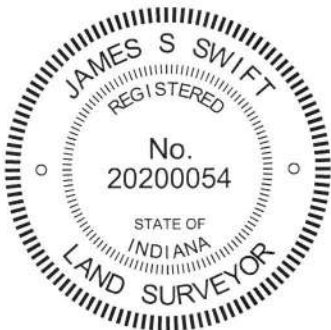


The Harrison monument was over a stone found.

No specific descriptions of this corner were found in the BCS Surveyor's Record beyond the original establishment of the corner as a wood post in 1820. The corner is shown as the terminal point for measurements in entries of 1839 and 1883. Notably, the entry of April 23-24, 1883 provides a measured distance between this corner and the corner 1/2 mile north (see BCS Corner SW 700-100). No recent BCS tie cards were found referencing this corner. Excavation was performed at this corner on April 5, 2019. Prior to excavation, a section of 1/2 inch diameter rebar, the origin of which is not known, was found at 9 inches deep in the approximate center of the intersection. Excavation revealed a stone found at 10 inches deep. The top 7 inches of the stone were exposed, at which point it was measured to be 12 inches N-S by 3 inches E-W. It was evident that the top of the stone had been broken off, in part during the process of excavation. The stone was embedded in the clay layer below the road, protruding approximately 2 inches into the road bed. The stone was vertical and oriented directly north-south. The east edge of the stone was excavated to the point where 16 inches was exposed, at which point the stone remained entirely stable in the ground. Hence, it is evident that the stone is yet substantially taller. At 9 inches below the top, the stone appeared to be wider to 15 inches N-S. No specific marks were found on the stone, though, as noted, the top of the stone had clearly been broken off. The distance between the stone and another stone found at the aforementioned corner 1/2 mile north fit very well with the distance recorded in the 1883 entry of the BCS Surveyor's Record, after applying a scale factor of 1.00415, which is commonly applied to measurements noted in BCS entries between 1860 and 1895.

The stone was accepted as marking the corner and was left in place. The top 5 inches of the stone were encased in concrete and a Harrison monument was set directly over the center of the top of the stone.

The rebar, removed during excavation, had been 1.0 foot east and 2.0 feet north of the top, center of the stone.



Kenneth E. Hedge
Kenneth E. Hedge, County Surveyor

James S. Swift
James S. Swift, IN LS 20200054
April 30, 2019

Harrison Township

Section 11 T17N, R1W	Section 12 T17N, R1W
-------------------------	-------------------------

SECTION CORNER RECORD

BOONE COUNTY SURVEYOR'S OFFICE

SW 750-200

State Plane grid coordinates NAD83 (2011):
 North: 1705676.41 East: 3114637.95 (U.S. survey feet)

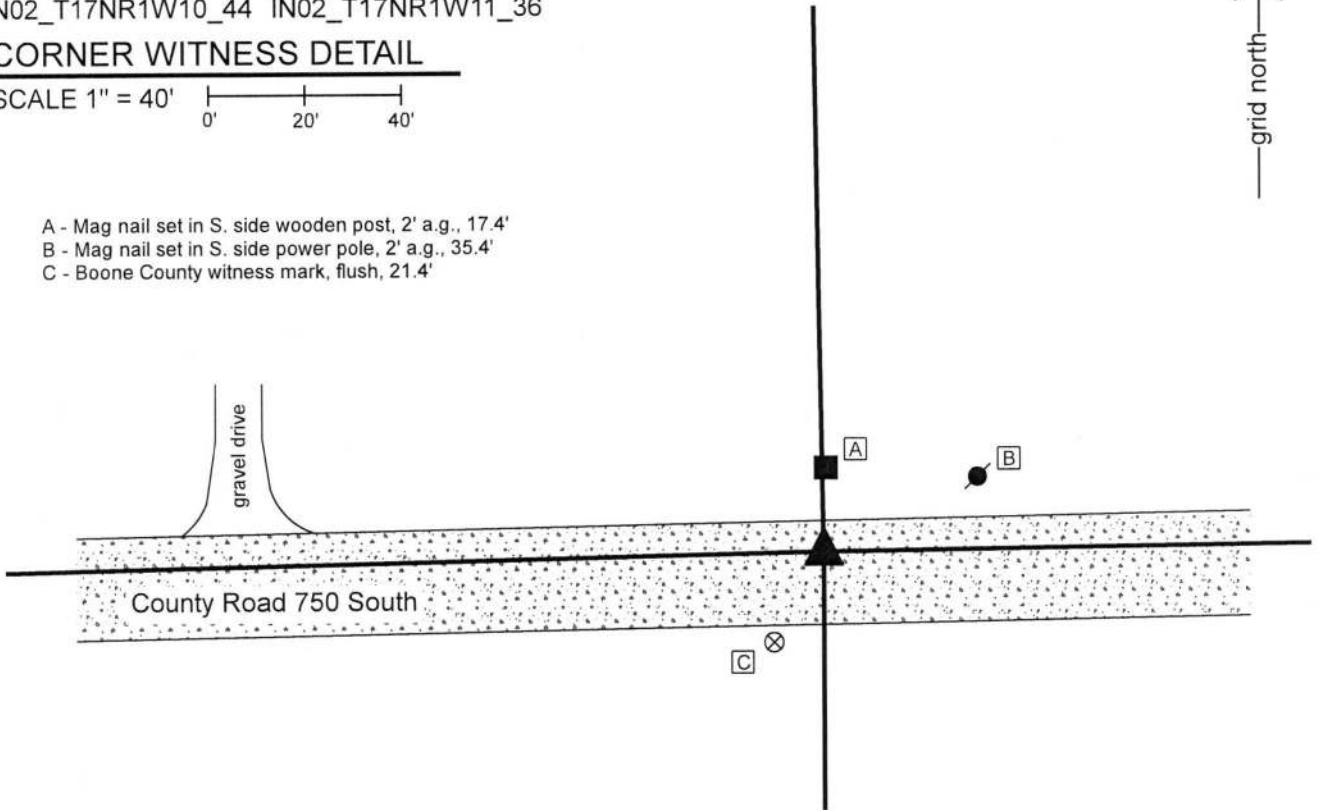
Type of monument: Harrison, 4" disk 'Section Corner'
 Depth: Six inches below adjacent road surface

Indiana tie card references:
 IN02_T17NR1W10_44 IN02_T17NR1W11_36

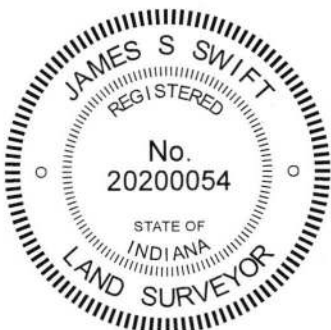
CORNER WITNESS DETAIL

SCALE 1" = 40'

- A - Mag nail set in S. side wooden post, 2' a.g., 17.4'
- B - Mag nail set in S. side power pole, 2' a.g., 35.4'
- C - Boone County witness mark, flush, 21.4'



The Harrison monument was set in place of a stone found.
 A BCS record of February 23-25, 1858 states, with respect to this corner, "reest. from old wit trees. Rock 12,14." No recent BCS tie cards were found referencing this corner.
 Excavation was performed at this corner on November 20, 2019. Prior to excavation, a vertical section of 1/2 inch diameter rebar was found at 6 inches deep in the east-west roadway, approximately in-line with an old post on the north side of the road. Excavation revealed the stone described in the 1858 record found at 10 inches deep, west of the rebar. The stone was found to be 14 inches E-W by 12 inches N-S by 10 inches tall. The top of the stone was flat and horizontal with no evident marks and no specific high point. It was distinctly oriented in cardinal directions and embedded in the clay layer at the bottom of the road bed. The top, center point of the stone was held as the specific location of the corner. The stone was removed and replaced with a Harrison monument. The rebar, removed during excavation, had been 1.0 foot east and 0.6 foot south of the point held as the corner and monumented with the Harrison.
 This corner was originally established as a wood post in 1820.



Kenneth E. Hedge
 Kenneth E. Hedge, County Surveyor

James S. Swift
 James S. Swift, IN LS 20200054
 December 11, 2019

Harrison Township

Section 10 T17N, R1W	Section 11 T17N, R1W
-------------------------	-------------------------

SECTION CORNER RECORD

SW 800-100

BOONE COUNTY SURVEYOR'S OFFICE

State Plane grid coordinates NAD83 (2011):

North: 1703085.33 East: 3119962.56 (U.S. survey feet)

Type of monument: Harrison, 4" disk 'Section Corner'

Depth: Flush with surrounding ground

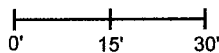
Indiana tie card references:

IN02_T17NR1W12_72 IN02_T17NR1W11_80

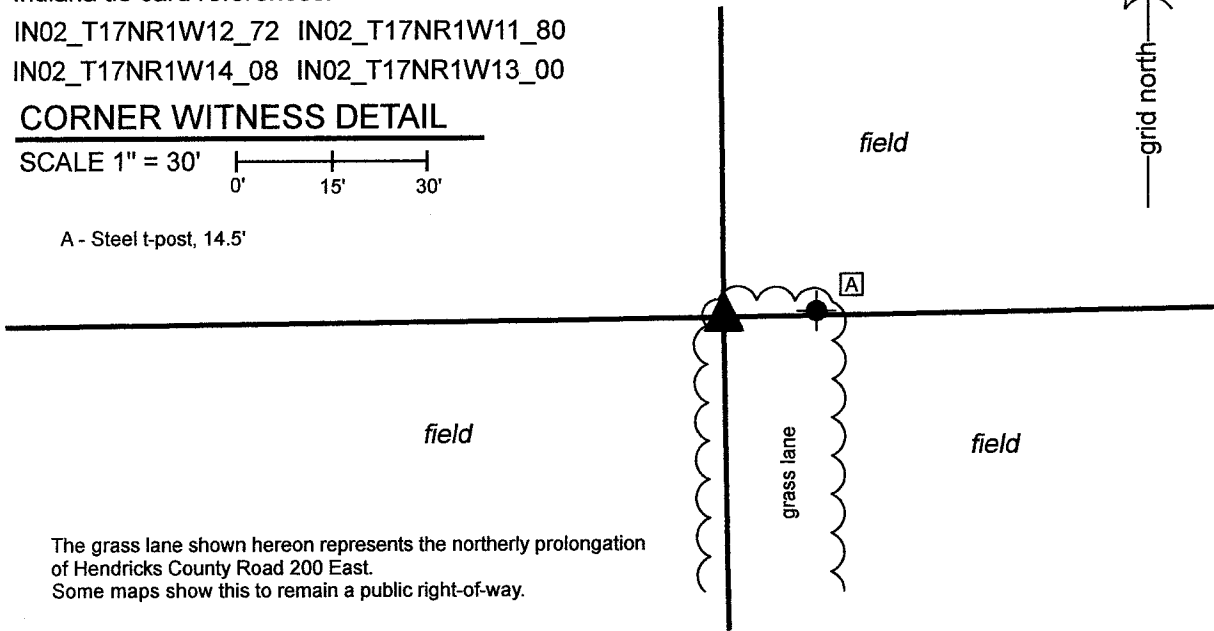
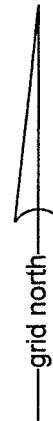
IN02_T17NR1W14_08 IN02_T17NR1W13_00

CORNER WITNESS DETAIL

SCALE 1" = 30'



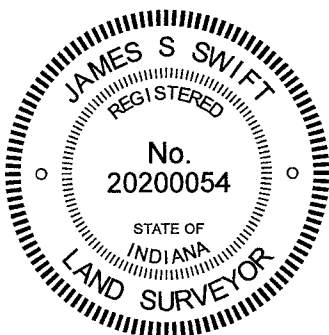
A - Steel t-post, 14.5'



The grass lane shown hereon represents the northerly prolongation of Hendricks County Road 200 East. Some maps show this to remain a public right-of-way.

The Harrison monument was set in place of a 1/2-inch diameter rebar found and accepted as the best available evidence of the corner. No specific descriptions of this corner were found in the BCS Surveyor's Record beyond the original establishment of the corner as a wood post in 1821. No recent BCS tie cards were found referencing the corner. Field notes provided by the Hendricks County Surveyor's Office indicate that substantial excavation was performed in the vicinity of this corner in May, 2013, but no stone was found. The field notes indicate that the excavation area may have been slightly south of the rebar which is known to have been existing at the time. No mention of the rebar is made in the field notes. The 1/2-inch diameter rebar was found by this office in the Spring of 2011. Revisited in Winter, 2021, the rebar was found in the same position, evidently undisturbed. The position of the rebar was tested with respect to the available evidence of adjacent corners. It is observed that, although the rebar was on the west edge of an existing grass lane, it is at the northerly extension of the approximate center of the asphalt roadway which terminates at a point 812 feet south of the corner. The rebar was also observed to be at almost precisely the double-distance prolongation of a line connecting a rebar found with Hendricks County cap at the east quarter corner of Section 14 and the approximate center of the road at a point in-line with an existing ancient fence to the East 1/4 mile south of the subject corner. Furthermore, the position of the rebar lined up remarkably well with the available evidence of the south line of Section 12, being an ancient wood post found 1/4 mile east of the subject corner, a stone at the 1/16 corner which coincides with the intersection of Boone County Roads 800 South and 25 West, and with the position of the southeast corner of Section 12, as established with respect to the position of a stone found at the southwest corner of Section 7, T17N, R1E. Hence, the position of the rebar was found to fit well with the available evidence of adjacent corners to the south and to the east. Extensive probing and manual excavation in February and March, 2021 did not reveal further evidence of the corner. The rebar was held as marking the corner and was replaced with a Harrison monument on March 9, 2021. While removing the rebar from the ground, the patterns of rust and deterioration observed indicate that it had been present and undisturbed in the same position for a very long time.

A survey recorded as Instrument 200800008588 in the Office of the Boone County Recorder shows the corner as a 1-inch iron pin found. No monument of this dimension and character was found in the vicinity of the corner.



Kenneth E. Hedge
 Kenneth E. Hedge, County Surveyor

James S. Swift
 James S. Swift, IN LS 20200054
 March 30, 2021

Harrison Township
Boone County

Middle Township
Hendricks County

Section 11 T17N, R1W	Section 12 T17N, R1W
Section 14 T17N, R1W	Section 13 T17N, R1W

SECTION CORNER RECORD

SW 800-150

BOONE COUNTY SURVEYOR'S OFFICE

State Plane grid coordinates NAD83 (2011):

North: 1703056.02 East: 3117314.56 (U.S. survey feet)

Type of monument: 5/8 inch diameter rebar with metal cap stamped "Hendricks County Surveyor"

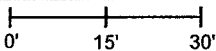
Depth: 1 inch below adjacent pavement

Indiana tie card references:

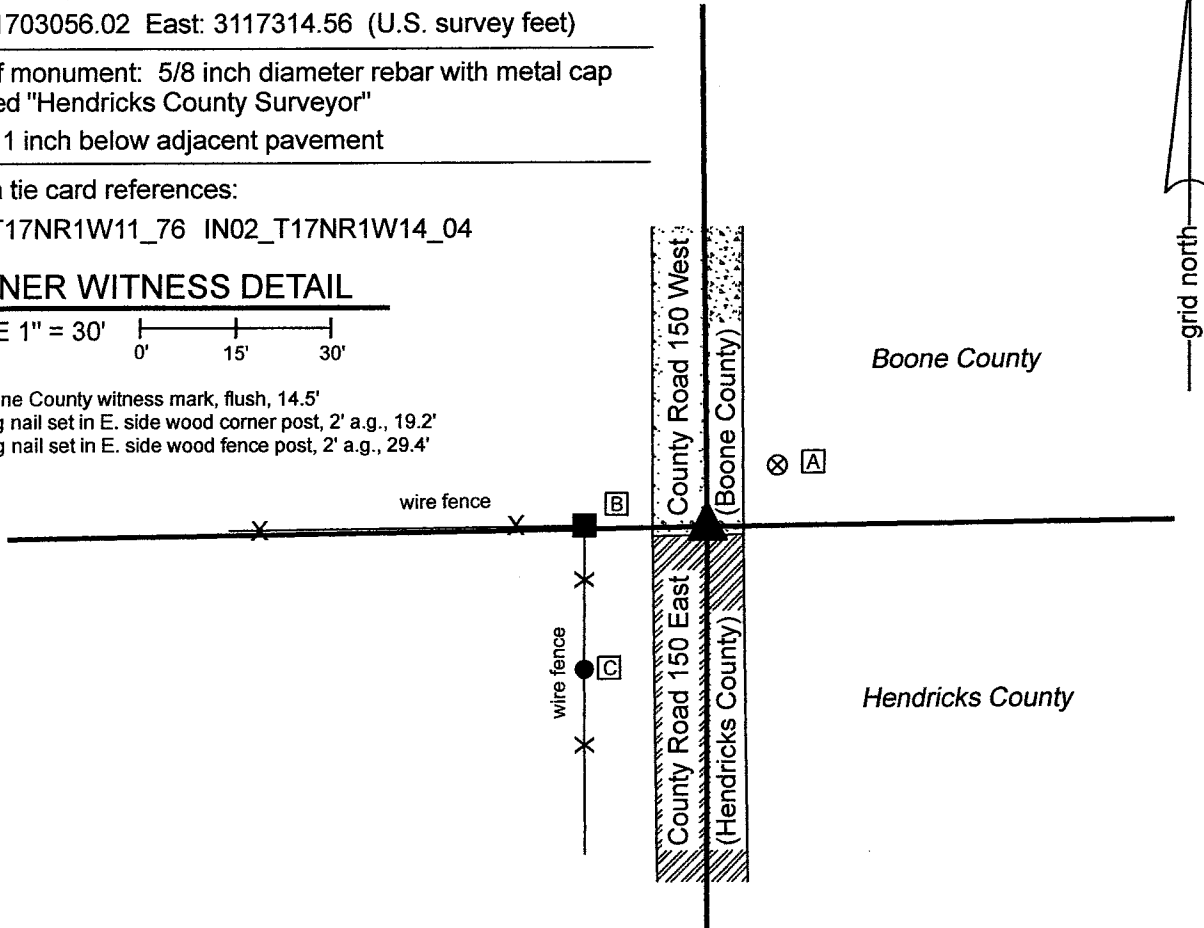
IN02_T17NR1W11_76 IN02_T17NR1W14_04

CORNER WITNESS DETAIL

SCALE 1" = 30'



- A - Boone County witness mark, flush, 14.5'
- B - Mag nail set in E. side wood corner post, 2' a.g., 19.2'
- C - Mag nail set in E. side wood fence post, 2' a.g., 29.4'



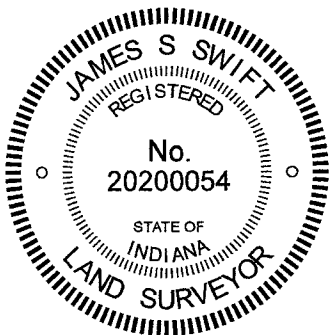
The rebar with Hendricks County Surveyor cap was found in place and held as marking the corner.

This monument is shown on field notes dated May 14, 2013 and provided by the Office of the Hendricks County Surveyor. The notes show the rebar as being set over a stone of dimensions 5 by 10 by 25 inches found at 8 1/2 inches deep.


A BCS tie card dated April 25, 1883 states, with respect to this corner, "Reest. from O.B.T. Stone 22.12.5 +." No recent BCS tie cards were found referencing this corner. The stone was not excavated and exposed. The monumentation and report of the Hendricks County Surveyor is accepted.

Given the uncertainties in measuring the size of irregular objects, the dimensions for the stone as reported by the Hendricks County Surveyor are sufficiently similar to the dimensions recited in the 1883 BCS record as to consider that this is most likely the same monument as was set by the Boone County Surveyor in 1883. In 2011, prior to excavation by Hendricks County, a railroad spike was found 1.1 feet north and 0.8 feet west of the position of the corner as currently monumented.

This corner was originally established as a wood post in 1820.




Kenneth E. Hedge, County Surveyor


James S. Swift, IN LS 20200054
March 30, 2021

Harrison
Township
Boone
County

Section 11
T17N, R1W

Middle
Township
Hendricks
County

Section 14
T17N, R1W